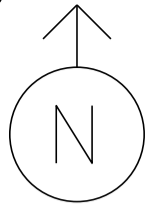
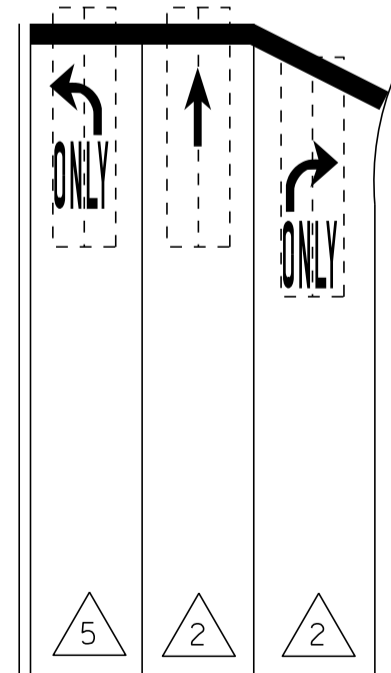
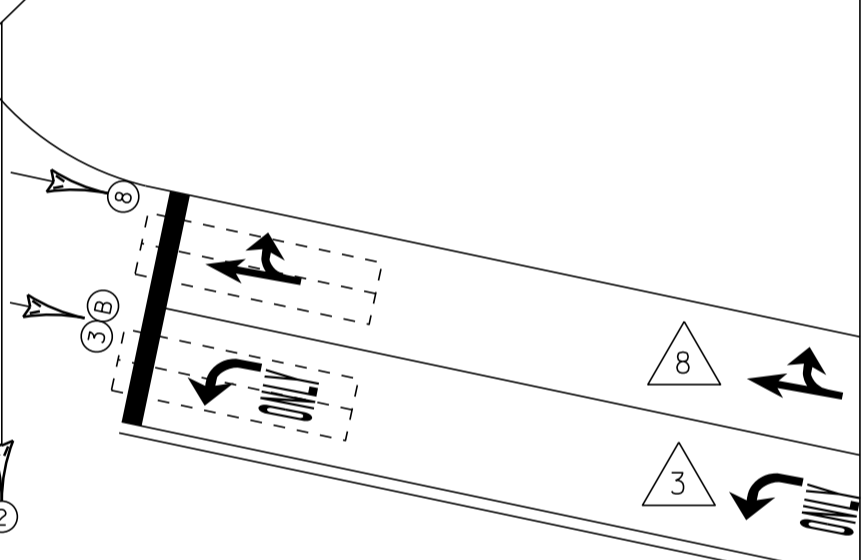
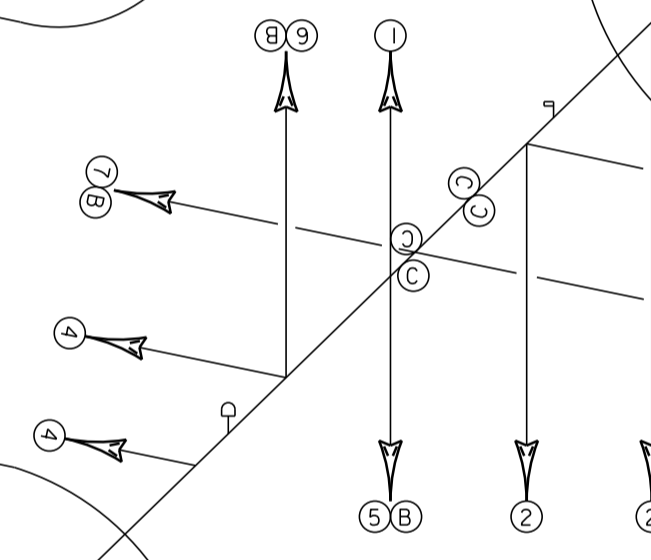
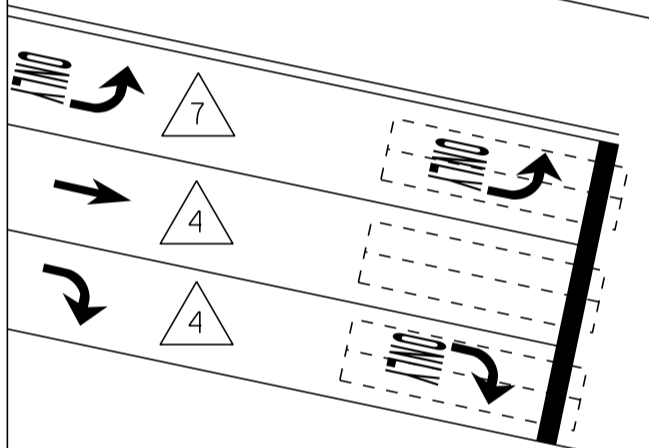
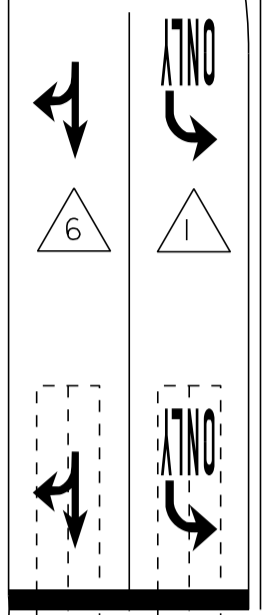


MS # 536

US 7 NORTH
US 2 WEST



VT 127 SOUTH



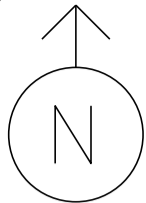
SEVERANCE RD

- ☐ PREEMPTION DETECTOR
- ☐ PREEMPTION STROBE
- ☒ CONTROL BOX
- LOOP DETECTION
- STANCHION
- ⓑ =
- ⓒ =

US 7 SOUTH
US 2 EAST

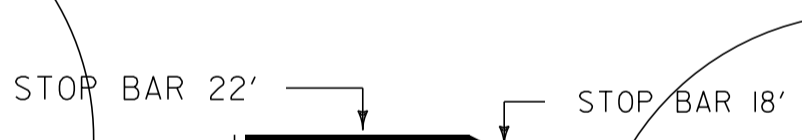
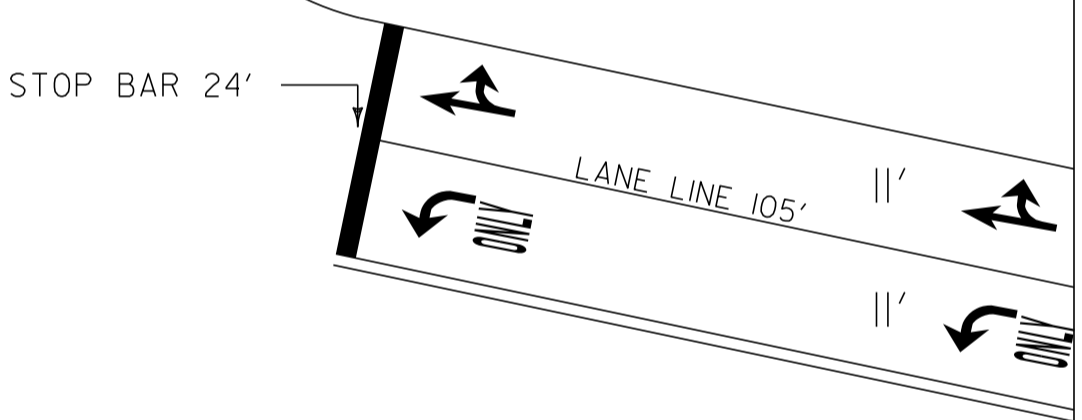
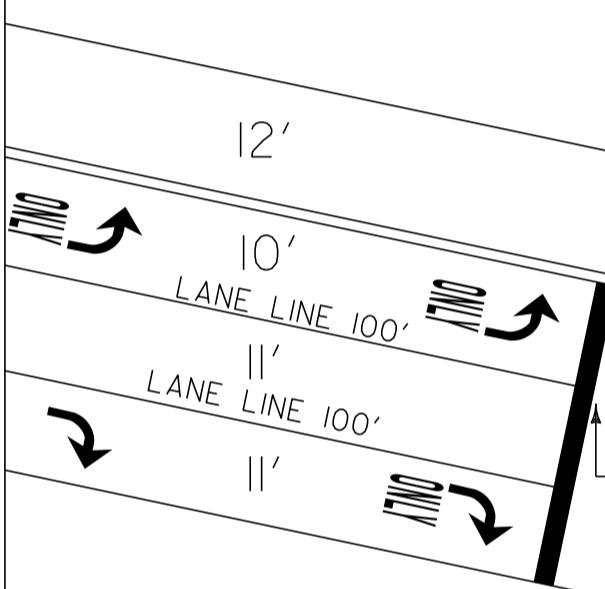
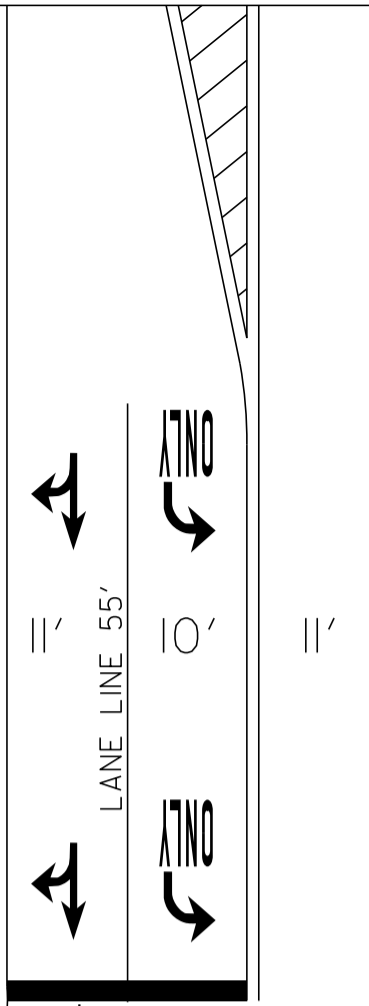
NOT TO SCALE

MS # 536



US 7 NORTH
US 2 WEST

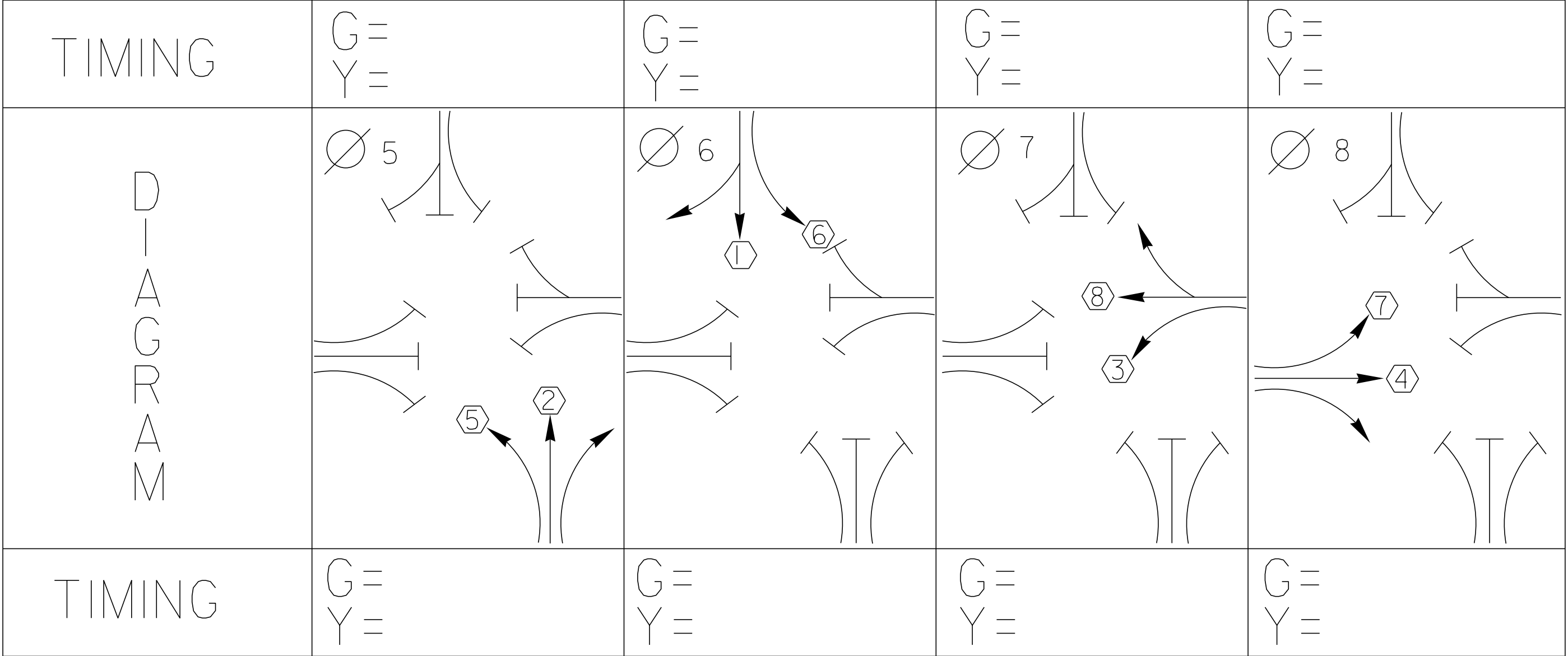
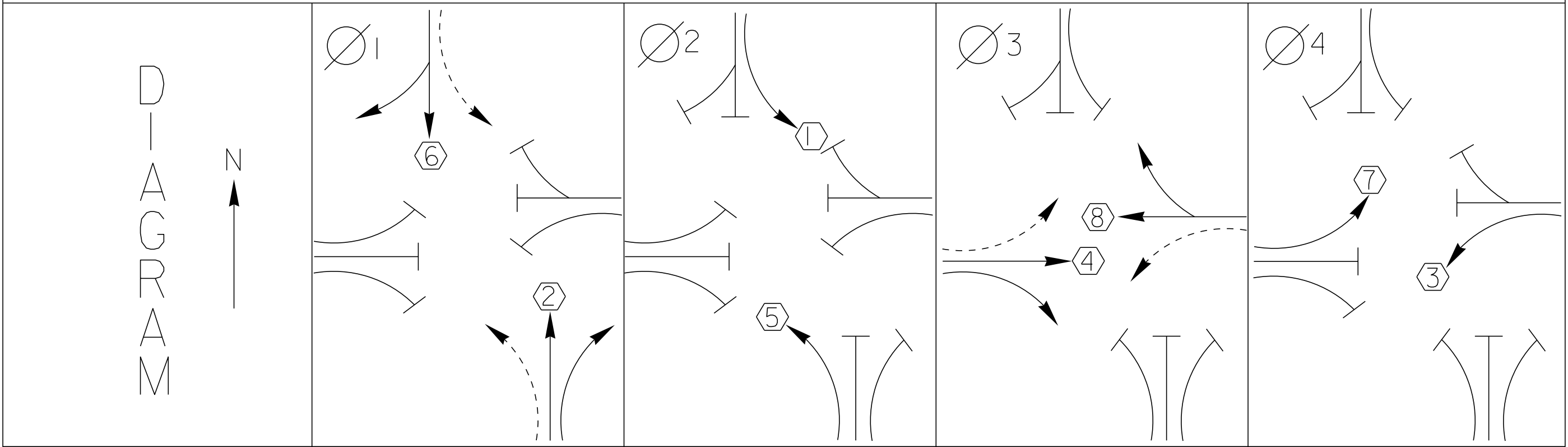
VT 127 SOUTH



SEVERANCE RD

US 7 SOUTH
US 2 EAST

NOT TO SCALE





1070
14 05
12.00

DANGER

115 VOLTS A.C.

WARNING

DO NOT OPERATE
CABINET WITHOUT
CONFLICT MONITOR UNIT

The control panel features several switches and a terminal block. On the left, there are two columns of switches: 'CONTROLLED' (ON/OFF), 'MAIN' (ON/OFF), 'FLASH', and 'STOP TIME' (ON/OFF). To the right is a 'VIB TEST' terminal block with 16 terminals labeled 01 through 16. A black cable is connected to the terminal block.

A clear plastic bag is attached to the interior of the cabinet door. It contains several sheets of white paper and a pair of yellow gloves.

A white plastic lattice filter is mounted at the bottom of the cabinet door, likely for ventilation.

CONNECT
EARTH GROUND

Orange warning label with illegible text.



REFERENCE UNIT
POWER ON
THREAT
VOLTAGE

Reference unit with multiple channels and status LEDs. The unit is blue and white, with several channels visible. Each channel has a small display and a red LED indicator. The unit is labeled "ECONOLITE" at the bottom.

CABINET POWER SUPPLY
12V DC

Cabinet power supply unit with status LEDs. The unit is blue and has a digital display showing "0.00". It is labeled "ECONOLITE" at the bottom.

ECONOLITE
CONTROL PRODUCTS, INC.

Main Econolite control unit with a screen and keypad. The screen displays a colorful image. The keypad has buttons for "F1" through "F10", "ENTER", and "0". The unit is labeled "ECONOLITE" and "CONTROL PRODUCTS, INC." at the top. Below the keypad, there are four ports labeled "A", "B", "C", and "D".

ECONOLITE
880-10

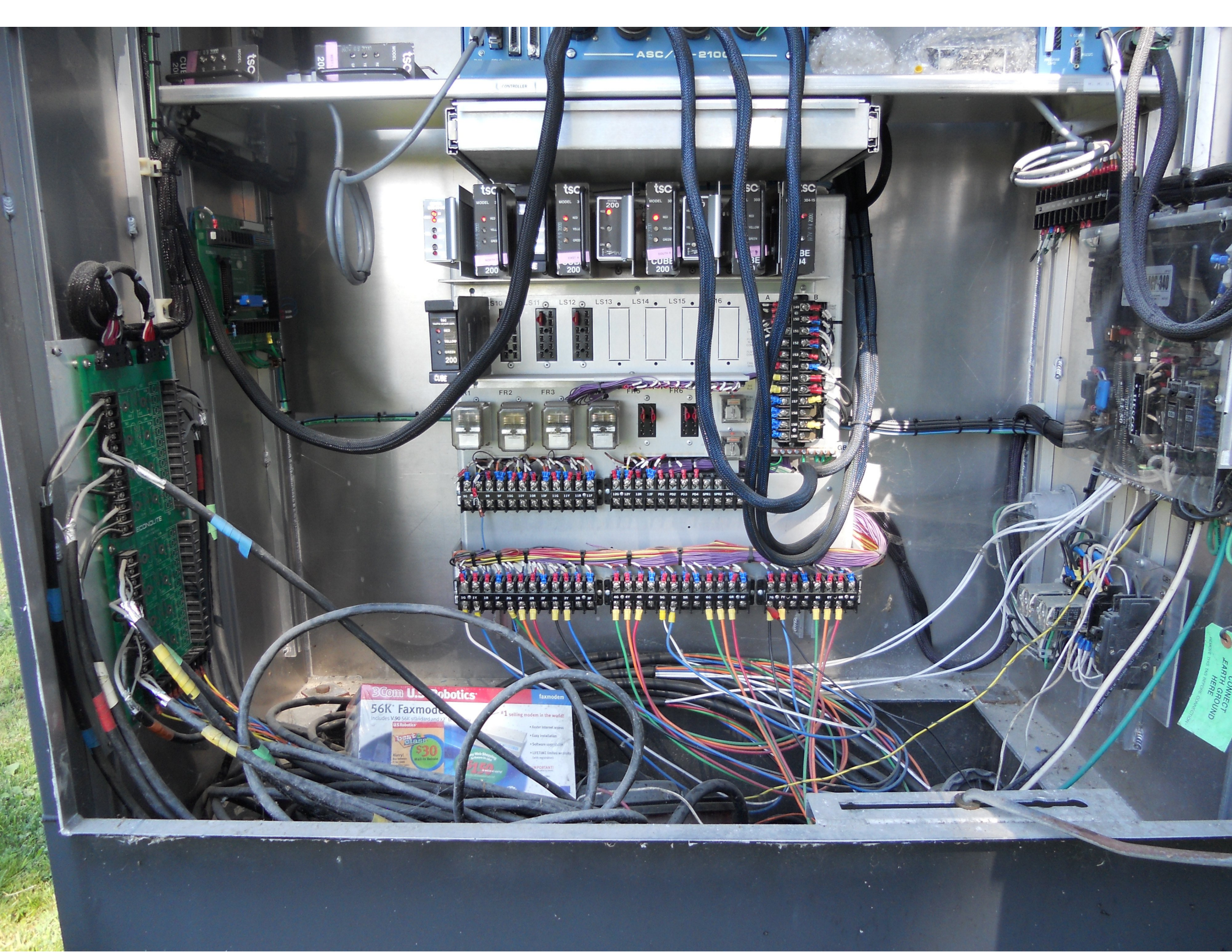
Econolite 880-10 unit with a vertical display. The unit is blue and has a vertical display showing a colorful image. It is labeled "ECONOLITE" and "880-10" at the top.

tsc
MODEL 200

TSC Model 200 units. Two units are visible, both labeled "tsc" and "MODEL 200". They are black and have several buttons and a small display.

CUBE 200

Cube 200 units in a rack. Several units are visible, all labeled "CUBE 200". They are black and have a digital display and several buttons.



tsc
MODEL 200
CUE

ASC / -2100

tsc
MODEL 200
tsc
MODEL 200
tsc
MODEL 200
tsc
MODEL 200
tsc
MODEL 200
tsc
MODEL 200

LS10 LS11 LS12 LS13 LS14 LS15 LS16

FR2 FR3 FR4 FR5

FR2 FR3 FR4 FR5

3Com U.S. Robotics
56K Faxmodem
Includes V.29 fax and V.22bis
US Robotics
#1 selling modem in the world!
• Faster Internet access
• Easy installation
• Software support
• LIFETIME Online fax support
Hurry!
Special Price
\$30
\$49.95
Important!

DO NOT
CONNECT
HERE
GROUND
CONNECTION

BUS INTERFACE UNIT

POWER ON
TRANSMIT
VALID DATA

PORT

ECONOLITE

MODEL C
ECONOLITE
VEHICLE DETECTOR

MODEL C
ECONOLITE
VEHICLE DETECTOR

MODEL C
ECONOLITE
VEHICLE DETECTOR

MODEL C
ECONOLITE
VEHICLE DETECTOR

MODEL C
ECONOLITE
VEHICLE DETECTOR

ON
RESET

E
T
E
T
E
T
E
T
E
T

RANGE
ARM

B. I. U.
DETECTOR
1

L1
L2
L3
L4

L5
L6

L11
L12

L9
L10

L15
L16

L13
L14

NOT
USED

NOT
USED

NOT
USED

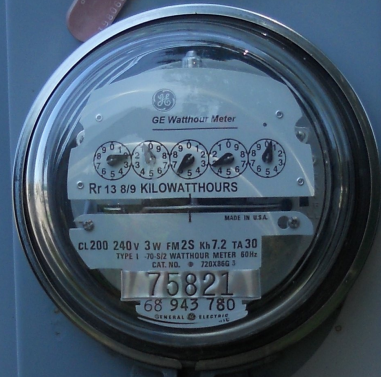
P3

MADE IN MEXICO

80 75

Unit





TMM2212R

MANE BUS PATRÓN / CAPACIDAD DE LA BARRA PRINCIPAL
200 AMPS MAX.
TODOS VAMOS. 1PHASE-3WIRELOS

PRESENCIA VISIBLE DE UNO PUNTO O INDICADOR BREAKER SE TRATA
DE UN INTERRUPTOR. SI NO SE VE UNO DE LOS INDICADORES DE
LA MANIVELA DEL INTERRUPTOR EN LA POSICIÓN ABierto, INDICA QUE EL
INTERRUPTOR ESTÁ CERRADO. PARA REAFIRMAR EL SERVICIO DE
LA MANIVELA AL EXTREMOS DE LA BARRA (C) 2008

REVISAR LA TABLA DE DATOS DE LA BARRA (C) 2008



Hazard of Electrical Shock or Burn
Turn OFF power disconnecting this
equipment before working inside.



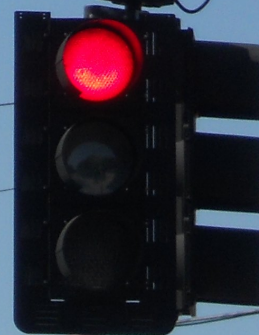
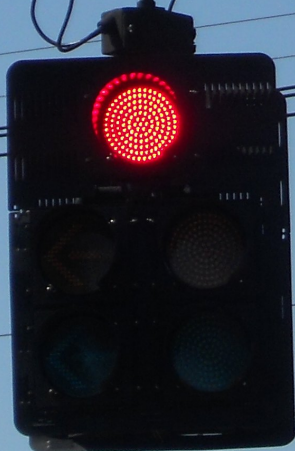
2031
CHAMPLAIN
CHIROPRACTIC
& ACUPUNCTURE
SERVICES P.C.
Dr. Paul F. Hayes
802-876-2191

BLAKEY ST

ONLY



LEFT TURN
YIELD
ON GREEN



BLAKELY RD





ONLY ONLY

ONLY ONLY





LEFT TURN
YIELD
ON GREEN

LEFT TURN
YIELD
ON GREEN

HEAD ON
COLLISION
POINT
AHEAD





ROOSEVELT HWY

LEGAL LOAD
LIMIT
24,000
POUNDS





ONLY ONLY ONLY





SEVERANCE

ANTIQUARIAN SHOW



LEFT TURN
YIELD
ON GREEN




LEFT TURN
YIELD
ON GREEN




NORTH WEST
7 2

SEVERANCE RD





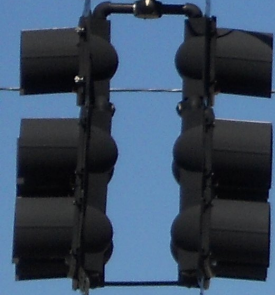
ONLY





LEFT TURN
YIELD
ON GREEN

LEFT TURN
YIELD
ON GREEN









14 MV 307
49-151304

NIC Program Steps

Step	Program	Step Begins	Pattern	Override
------	---------	-------------	---------	----------

TOD Program Steps

Step 1 Program 1 Step Begins 0600

Flash. Dimming Enable.
Red Rest Alt Veh Extension
Spare 5. Det Log Enable.
Spare 3. Spare 4
Type 0 Dly Enable. . . Spare 2
Det Diag Plan. . . . 0

	Phase Number											
	1	2	3	4	5	6	7	8	9	10	11	12
Max 2 Enable	X	X	X	.	X	X	X
Max 3 Enable
Veh Recall
Veh Max Recall
Ped Recall
Cond Service Inhibit.
Phase Omit
Special Function

Alt Sequence A B C D E F

Step 2 Program 1 Step Begins 0900

Flash. Dimming Enable.
Red Rest Alt Veh Extension
Spare 5. Det Log Enable.
Spare 3. Spare 4
Type 0 Dly Enable. . . Spare 2
Det Diag Plan. . . . 0

	Phase Number											
	1	2	3	4	5	6	7	8	9	10	11	12
Max 2 Enable
Max 3 Enable
Veh Recall
Veh Max Recall
Ped Recall
Cond Service Inhibit.
Phase Omit
Special Function

Alt Sequence A B C D E F

TOD Program Steps

Step 3 Program 1 Step Begins 1530

Flash. Dimming Enable.
Red Rest Alt Veh Extension
Spare 5. Det Log Enable.
Spare 3. Spare 4
Type 0 Dly Enable. . . Spare 2
Det Diag Plan. . . . 0

Table with 12 columns (Phase Number 1-12) and rows for Max 2 Enable, Max 3 Enable, Veh Recall, Veh Max Recall, Ped Recall, Cond Service Inhibit, Phase Omit, and Special Function.

Alt Sequence A B C D E F

Step 4 Program 1 Step Begins 1800

Flash. Dimming Enable.
Red Rest Alt Veh Extension
Spare 5. Det Log Enable.
Spare 3. Spare 4
Type 0 Dly Enable. . . Spare 2
Det Diag Plan. . . . 0

Table with 12 columns (Phase Number 1-12) and rows for Max 2 Enable, Max 3 Enable, Veh Recall, Veh Max Recall, Ped Recall, Cond Service Inhibit, Phase Omit, and Special Function.

Alt Sequence A B C D E F