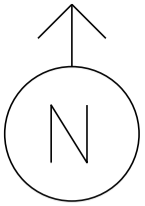


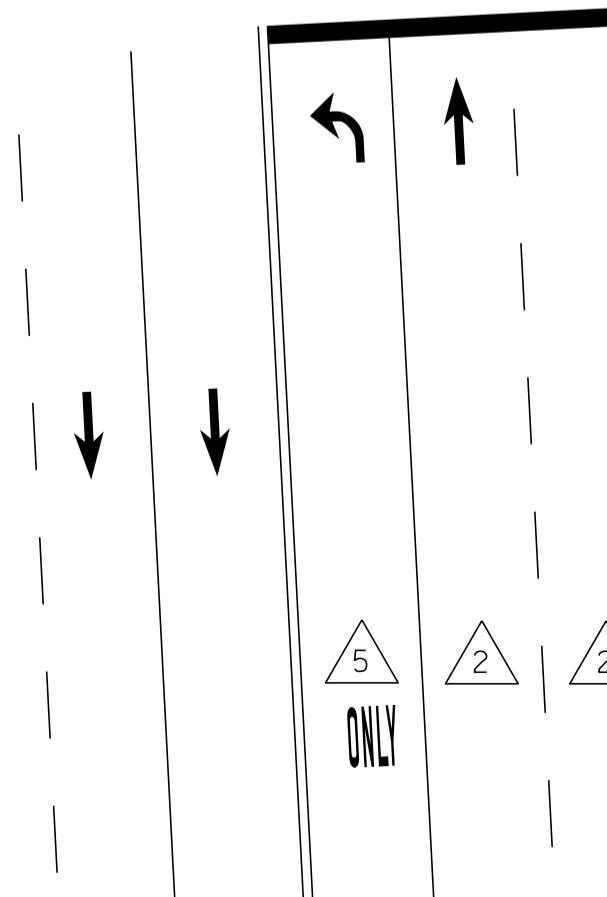
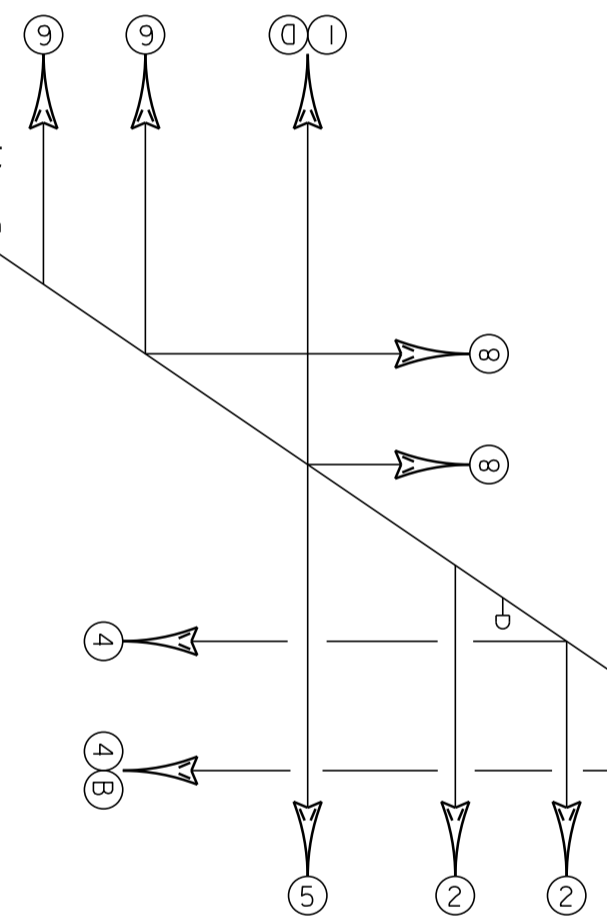
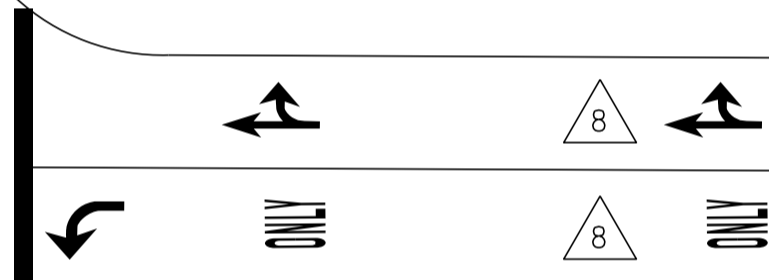
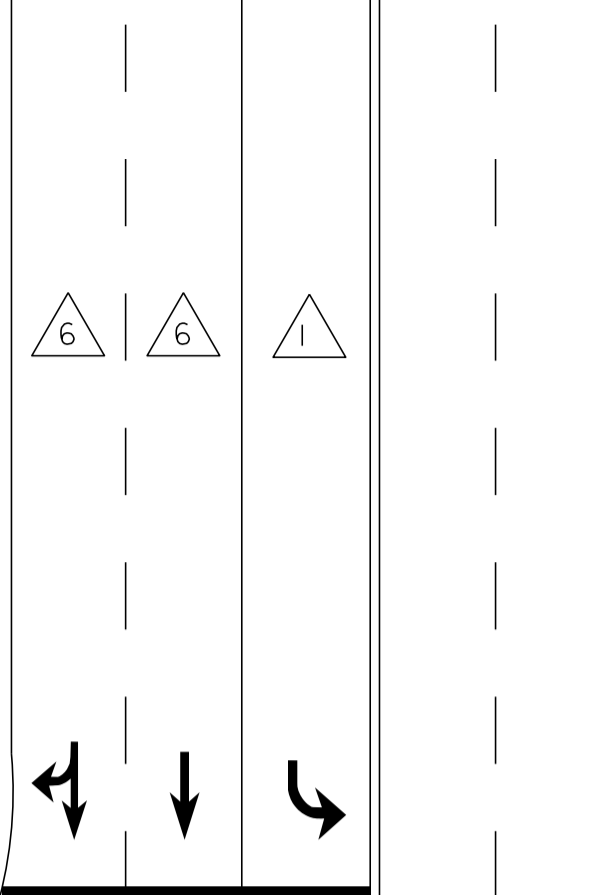
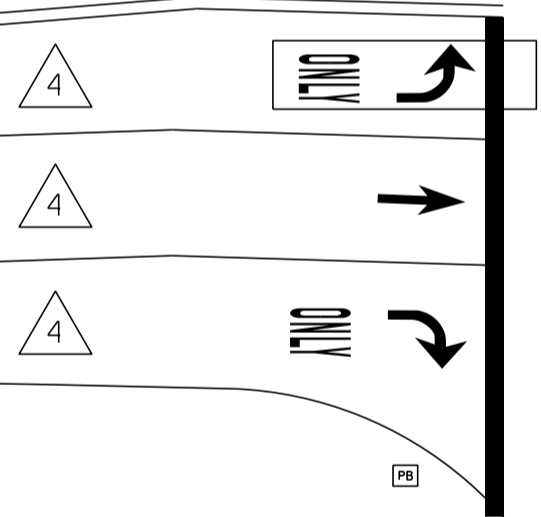
MS # 534



US 7 NORTH

- ☐ PREEMPTION DETECTOR
- ☐ PREEMPTION STROBE
- ☐ VIDEO CAMERA
- ☐ CONTROL BOX
- ☐ VIDEO DETECTION
- ☐ PB PULL BOX
- ☐ LUMINAIRE
- ☐ ROADWAY SIGN
- Ⓚ =
- Ⓛ =
- Ⓧ =

MTN VIEW RD

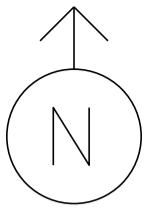


US 7 SOUTH

LOWER MTN VIEW RD (COSTCO)

NOT TO SCALE

MS # 534



US 7 NORTH

MTN VIEW RD

13' | 12' | 12' | 12' | 12'

LANE LINE 220'



STOP BAR 39'

13'

STOP BAR 26'

12' | 12' | LANE LINE 120'

12'

ONLY



LANE LINE 110'



12'

STOP BAR 52'

LANE LINE 80'

12'

ONLY



12'



ONLY

ONLY



12'

STOP BAR 33'

LOWER MTN VIEW RD (COSTCO)

LANE LINE 255'



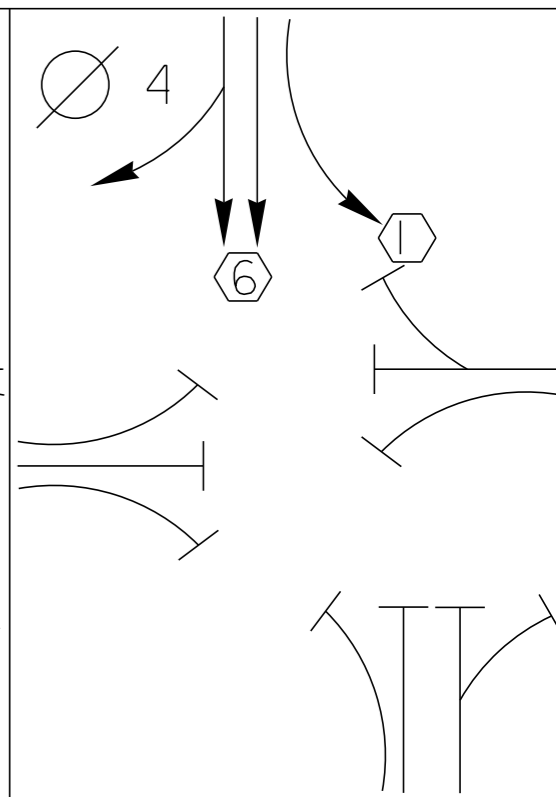
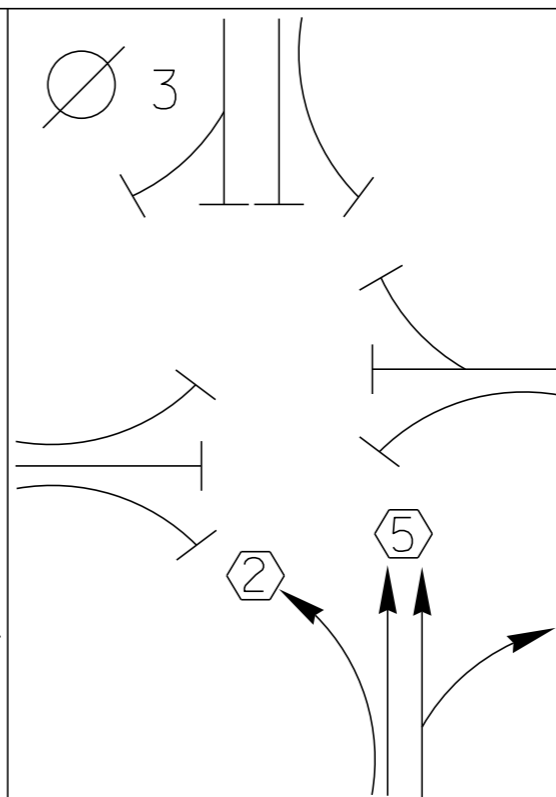
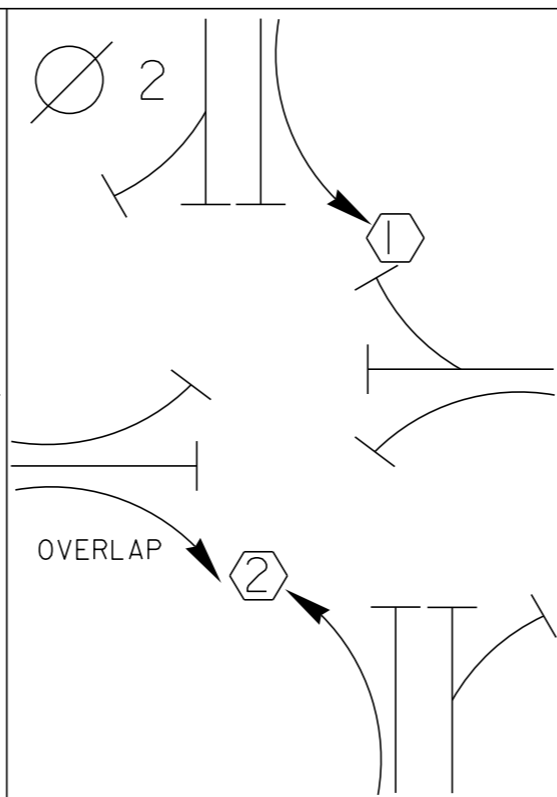
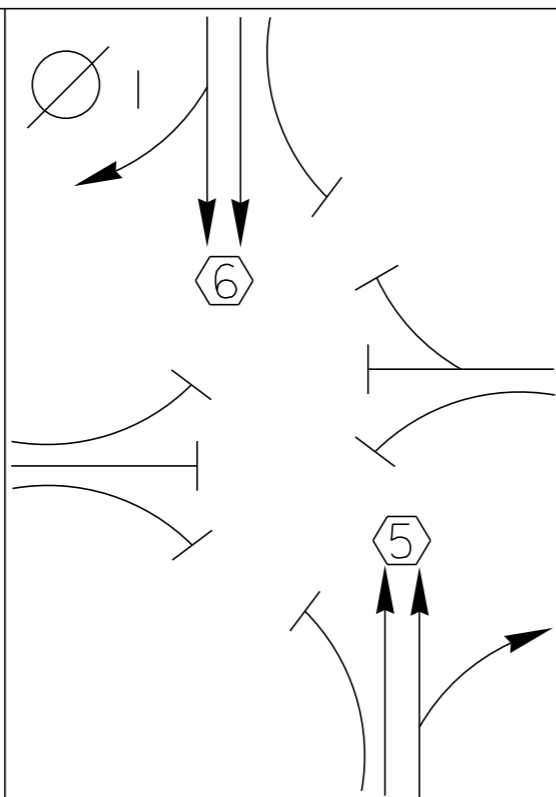
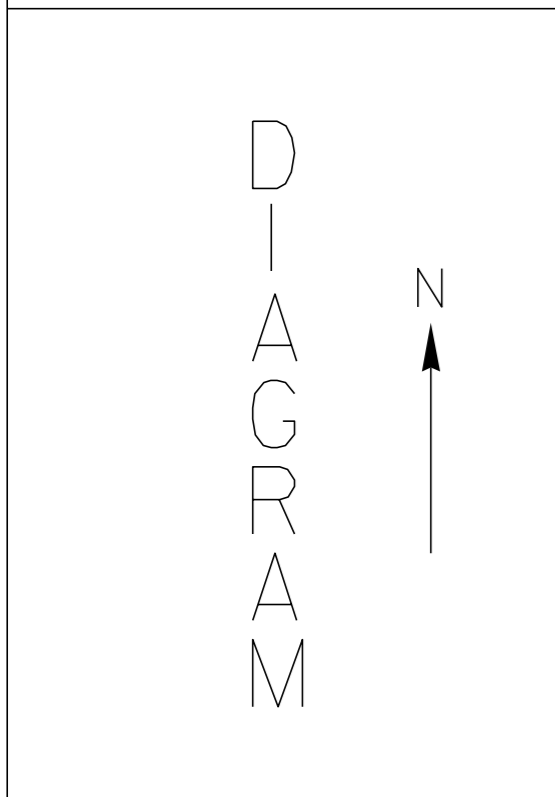
12' | 12' | 12'

11' | 11' | 11'

ONLY

US 7 SOUTH

NOT TO SCALE



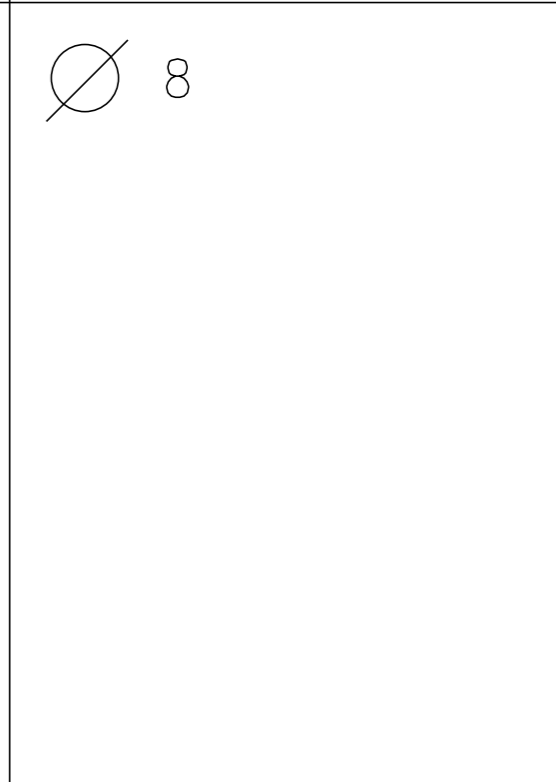
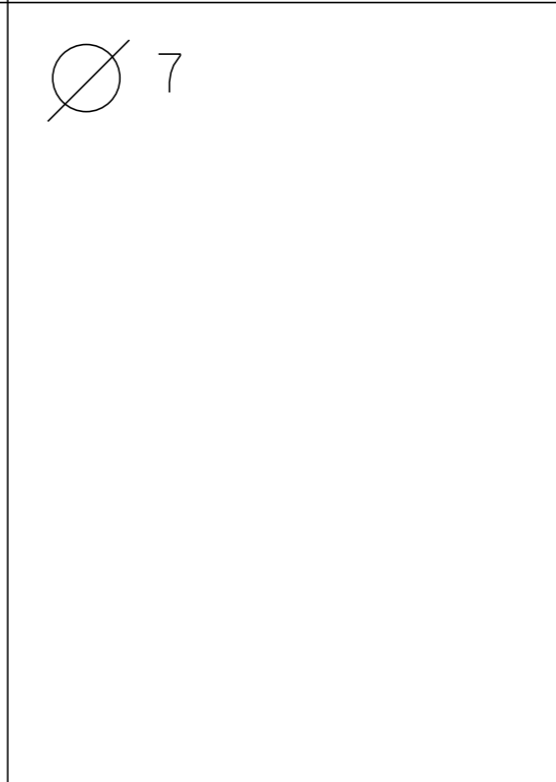
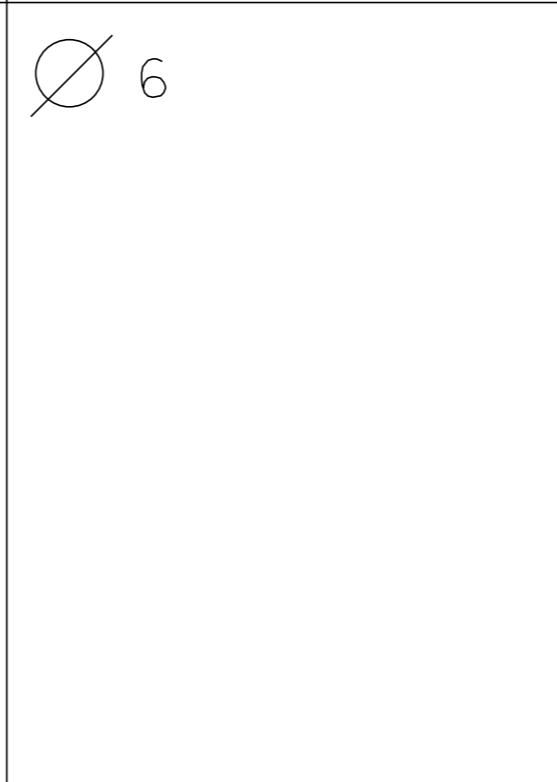
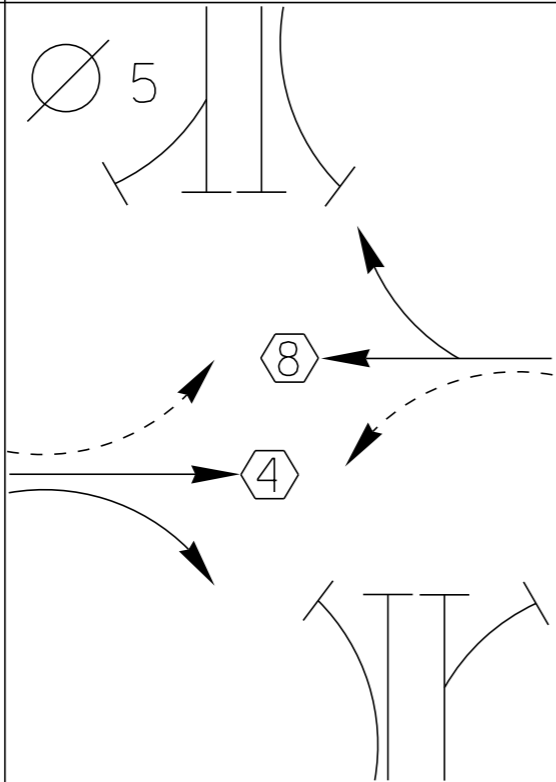
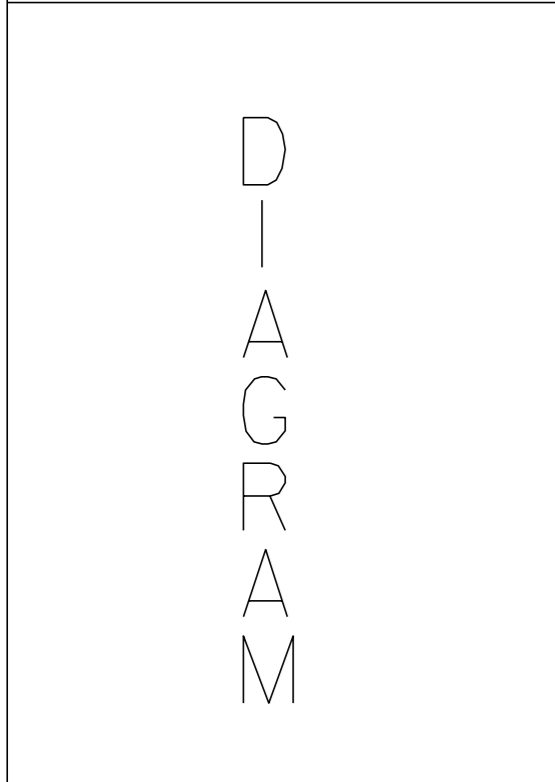
TIMING

G =  
Y =

G =  
Y =

G =  
Y =

G =  
Y =



TIMING

G =  
Y =

G =  
Y =

G =  
Y =

G =  
Y =

PROTECTED  
TURNS

PERMITTED  
TURNS  
PEDESTRIAN

CYCLE LENGTH, C = \_\_\_\_\_ S



PROPERTY OF:  
VT. AGENCY OF TRANS.  
MAINTENANCE DIV.

IN EMERGENCY CALL:  
DIST. TRANS. OFFICE  
655-1580 COLCHESTER

NIGHTS & WEEKENDS: 878-7111

**WARNING**

DO NOT OPERATE  
CABINET WITHOUT  
CONFLICT MONITOR UNIT

**DANGER**

115 VOLTS A.C.

CONTROL SWITCHES:

- STOP (OFF)
- FLASH (AUTO)
- STOP TYPING (ON)

TEST SWITCHES:

VSH TEST SW'S			
01/A	02/B	03/C	04/D
05	06	07	08
FCD TEST SW'S			
01/A	02/B	03/C	04/D
05	06	07	08

TURN ON  
LCA  
10/27/93  
1:00 PM ±



2/26/96 - Chg. load switch  
#2  
4

ON ON  
LKA

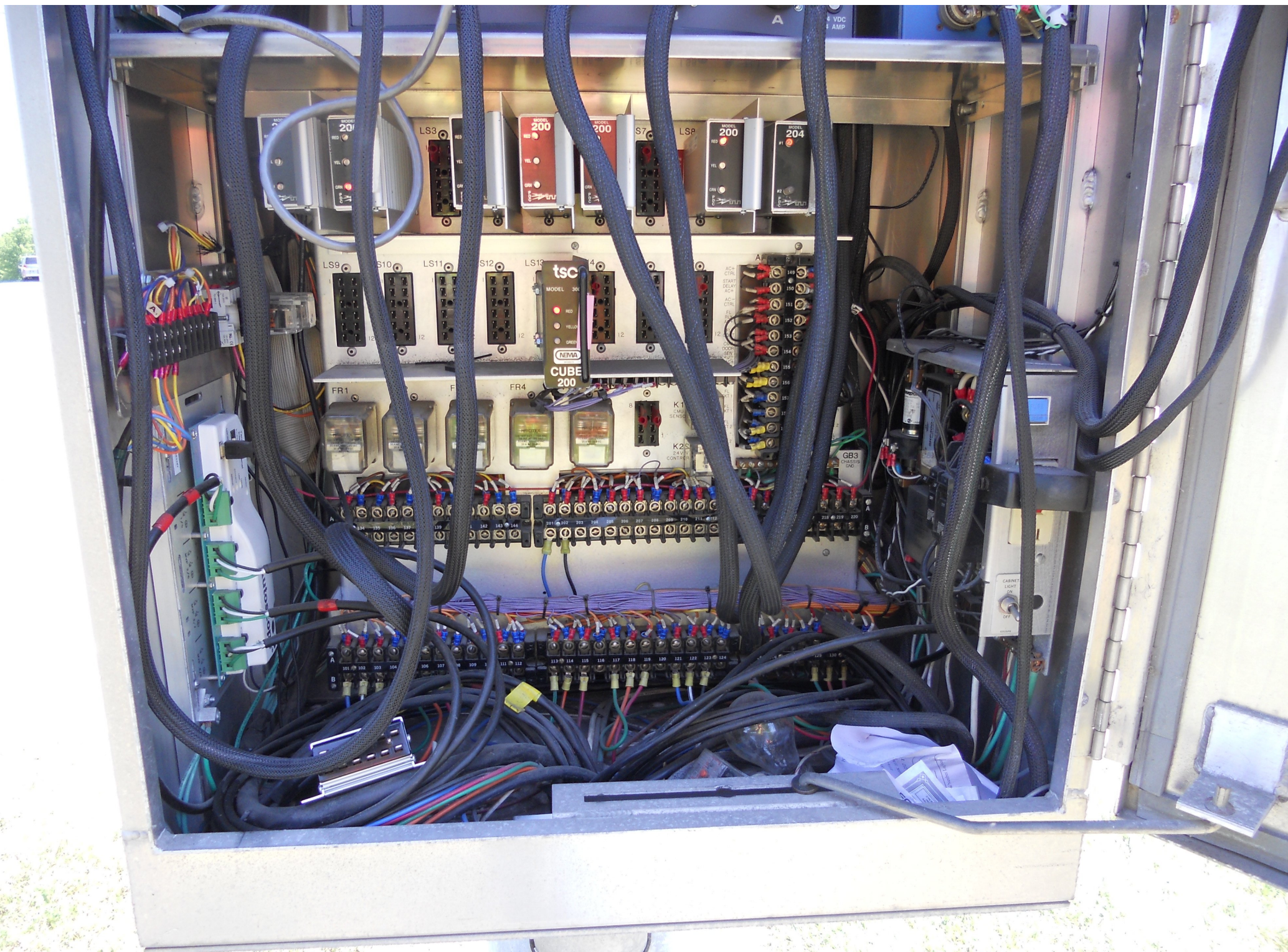
TURN ON  
LCA

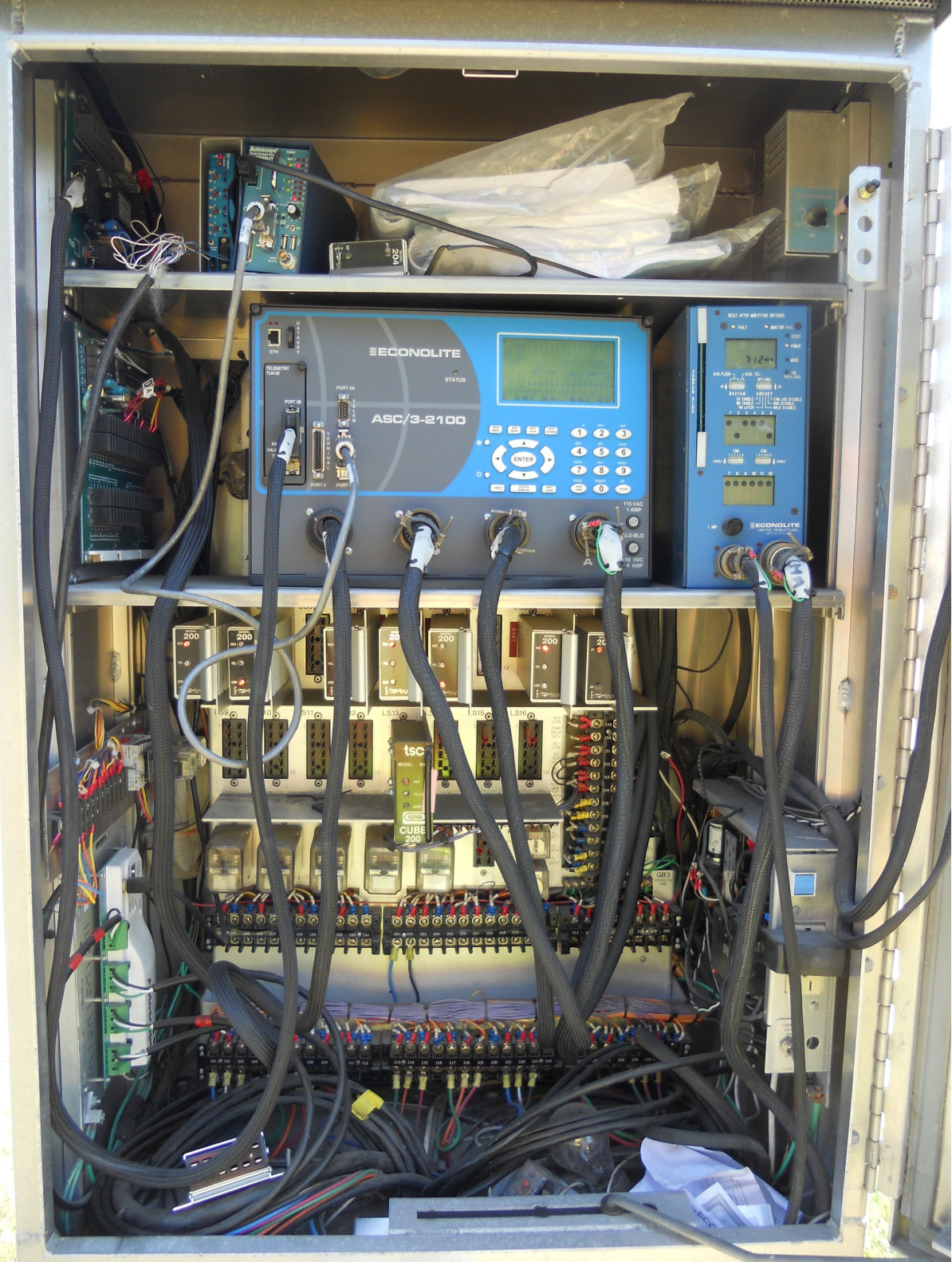
10/27/93

1:00 PM ~~+~~











ST. 6  
35 4

SI

**ABB**

KILOWATTHOURS 2A

PHASE-TO-NEUTRAL WATT-HOUR METER  
TYPE DSS & 5570C-003D  
FORM 2S 200 CL 240 V 31.5 AMP HT TA 30 Pa 7.2  
MADE U.S.A.

G.M.P.  
128 745  
83 850 290





ONLY | ↑ | ONLY



ONLY

ONLY





ONLY



ONLY





LEGAL LOAD  
LIMIT  
24,000  
POUNDS

SPEED  
LIMIT  
25

ROOSEVELT HWY

MOUNTAIN VIEW DR













48 LN 30  
KS 136A

LOWER MOUNTAIN VIEW DR

NO  
TURN  
ON  
RED

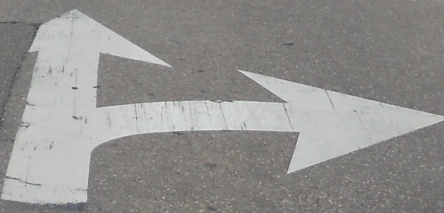
Fe SPEED  
LIMIT 40 ht x





NO  
TURN  
ON  
RED

ONLY



ONLY

ONLY

ONLY





ONLY











14 IN 32  
43 KS 13GA

Date: 08/09/2012

Timing Data:

Phase	1	2	3	4	5	6	7	8	9
Phases in use	x	x		x	x	x		x	
Min Green	5	5	0	5	5	5	0	5	
Walk	0	0	0	0	0	0	0	0	
Ped Clr	0	0	0	0	0	0	0	0	
Veh Ext	1.5	0	0	1.5	1.5	0	0	1.5	
MAX 1	8	34	0	8	5	37	0	8	
MAX 2	5	43	0	6	5	45	0	6	
MAX 3	8	44	0	8	5	45	0	6	
Yellow	4	4	3	4	4	4	3	4	
All Red	2	2	0	2	2	2	0	2	
Recall to Max									

Coordination Patterns: ACS3/Naztec Coord. Phases 2 & 6

Pattern 1									
Cycle Length	68	Offset	41	COS	111				
Splits	Ph 1	14	Ph 2	40	Ph 3	0	Ph 4	14	
	Ph 5	12	Ph 6	42	Ph 7	0	Ph 8	14	
	Ph 9	0	Ph 10	0	Ph 11	0	Ph 12	0	
Pattern 2(21)									
Cycle Length	72	Offset	35	COS	211				
Splits	Ph 1	12	Ph 2	48	Ph 3	0	Ph 4	12	
	Ph 5	12	Ph 6	12	Ph 7	48	Ph 8	12	
	Ph 9	0	Ph 10	0	Ph 11	0	Ph 12	0	
Pattern 3									
Cycle Length	74	Offset	32	COS	311				
Splits	Ph 1	12	Ph 2	50	Ph 3	0	Ph 4	12	
	Ph 5	11	Ph 6	51	Ph 7	0	Ph 8	12	
	Ph 9	0	Ph 10	0	Ph 11	0	Ph 12	0	

Day Plan [1]

Event	Action Plan	Step Begins
1	1	0600
2	2	1100
3	3	1400
4	1	1900
5	55	2200

Day Plan [2]

Event	Action Plan	Step Begins
1	1	0600
2	2	1000
3	1	1800
4	55	2200

Day Plan [3]

Event	Action Plan	Step Begins
1	1	0500
2	2	1000
3	3	1300
4	1	1800
5	55	2100

Day Plan [4]

Event	Action Plan	Step Begins
1	1	0500
2	2	0900
3	1	1700
4	55	2100

**Day Plan [5]**

<i>Event</i>	<i>Action Plan</i>	<i>Step Begins</i>
1	1	0700
2	2	1200
3	3	1500
4	1	2000
5	55	2300

**Day Plan [6]**

<i>Event</i>	<i>Action Plan</i>	<i>Step Begins</i>
1	1	0700
2	2	1100
3	1	1900
4	55	2300

**Action Plan**

<i>Action Plan</i>	<i>Pattern</i>
1	1
2	2
3	3
4 to 53	0
54	254-FREE
55	255-FLASH