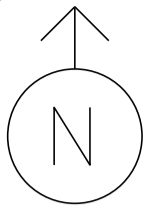


MS # 533



US 7 NORTH

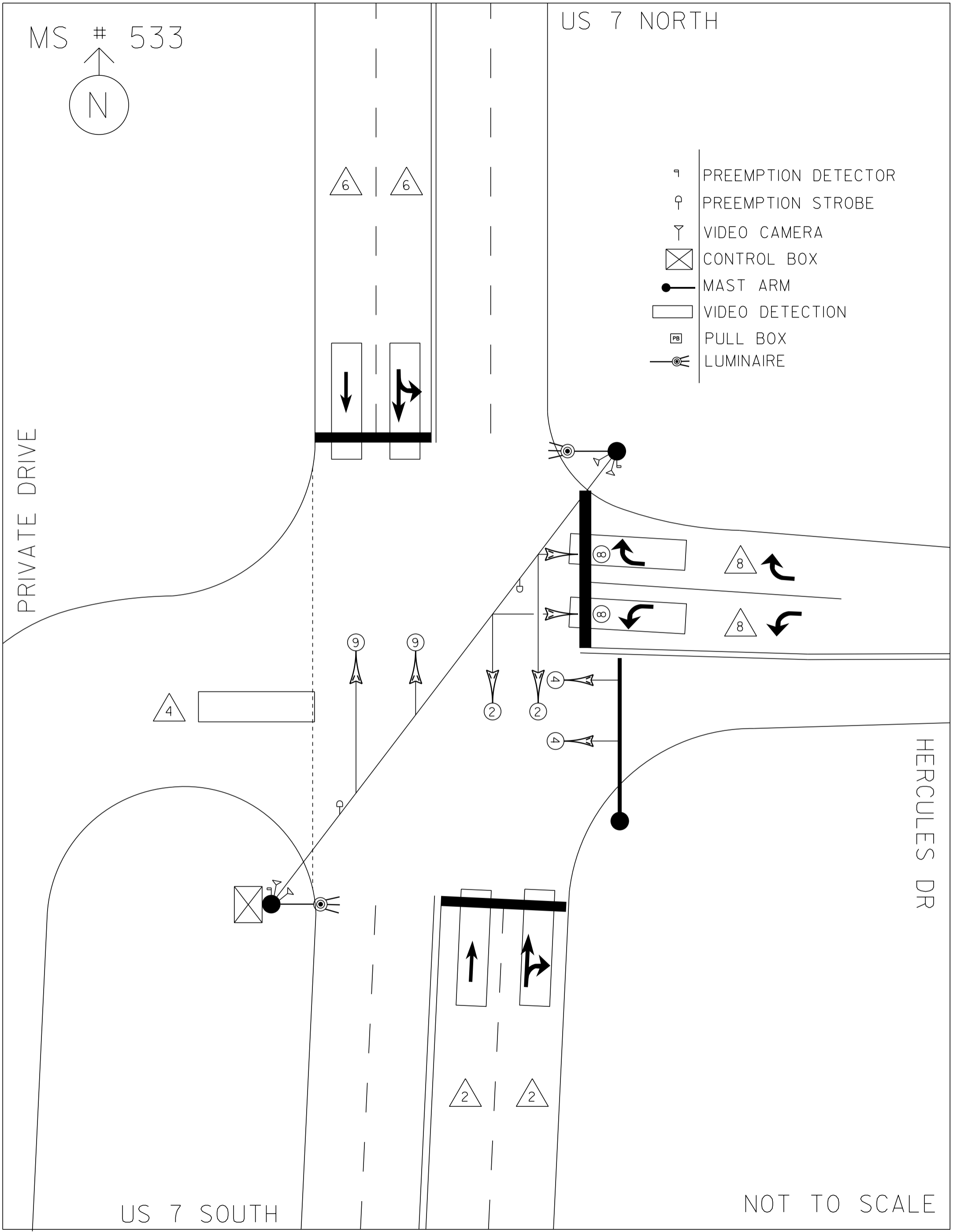
- ☐ PREEMPTION DETECTOR
- ♀ PREEMPTION STROBE
- ∩ VIDEO CAMERA
- ☒ CONTROL BOX
- MAST ARM
- ▭ VIDEO DETECTION
- ☐ PB PULL BOX
- ☉ LUMINAIRE

PRIVATE DRIVE

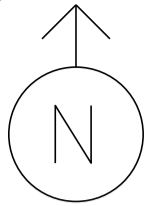
US 7 SOUTH

HERCULES DR

NOT TO SCALE



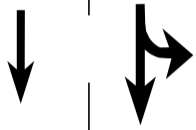
MS # 533



US 7 NORTH

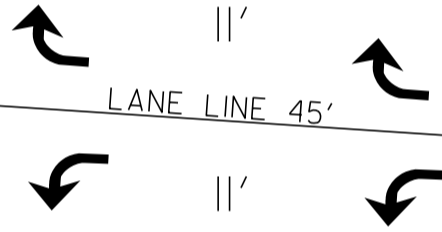
PRIVATE DRIVE

11' | 12' | 12' | 12'



STOP BAR 23'

STOP BAR 42'



LANE LINE 45'

16'

14'

HERCULES DR

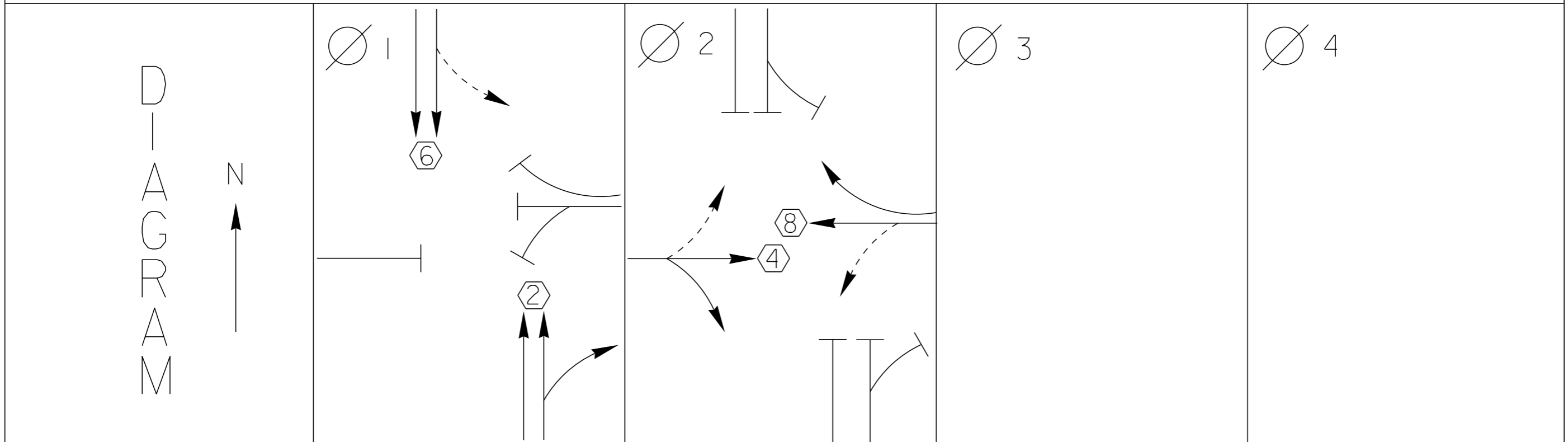
STOP BAR 23'



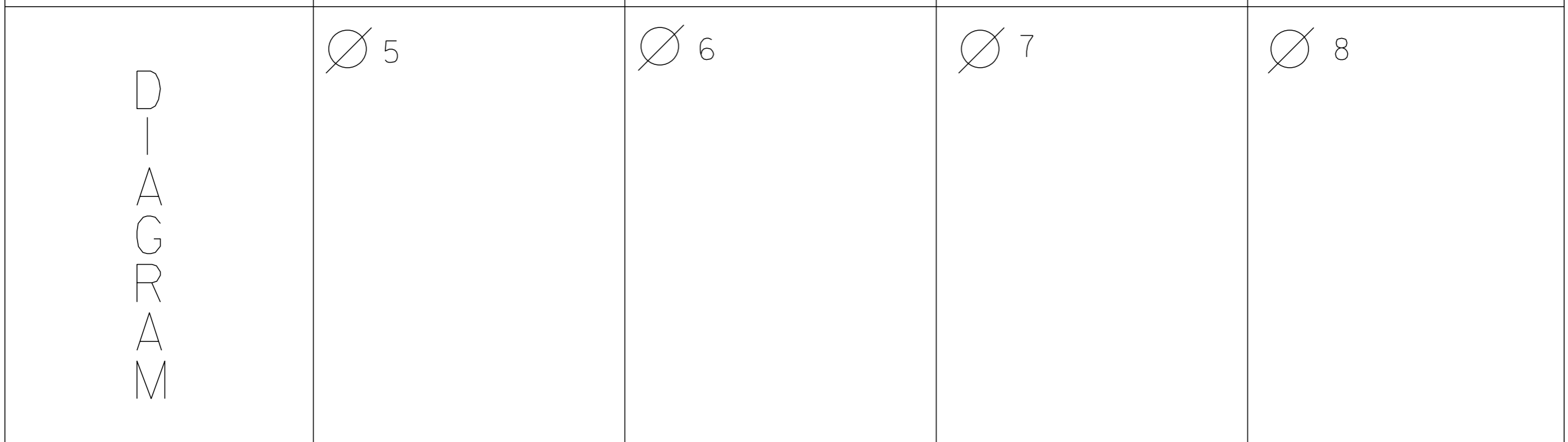
12' | 12' | 12' | 11'

US 7 SOUTH

NOT TO SCALE



T I M I N G	G = Y =	G = Y =	G = Y =	G = Y =
----------------------------	------------	------------	------------	------------



T I M I N G	G = Y =	G = Y =	G = Y =	G = Y =
----------------------------	------------	------------	------------	------------

	PROTECTED TURNS		PERMITTED TURNS PEDESTRIAN	CYCLE LENGTH, C = _____ S
--	--------------------	--	--------------------------------------	---------------------------



PROPERTY OF
VT. AGENCY OF TRANS.
MAINTENANCE DIV.
IN EMERGENCY CALL
VLT TRANS. OFFICE
800-890-0000
DAYS & EVENINGS 800-890-0000



WARNING

DO NOT OPERATE
CABINET WITHOUT
CONFLICT MONITOR UNIT

DANGER

115 VOLTS A.C.

VEH TEST SW'S

01/A	02/B	03/C	04/D
05	06	07	08
09/A	10/B	11/C	12/D
02	04	06	08

VEH TEST SW'S

Blue control panel with a small screen and a numeric keypad (0-9).

Large white ventilation grille with a diamond-shaped mesh pattern.

EBERLE DESIGN INC. PHOENIX AZ 85028-9837
CONFLICT MONITOR

MODEL 200
RED
YEL
GRN

MODEL 200
RED
YEL
GRN

MODEL 200
RED
YEL
GRN

MODEL 200
RED
YEL
GRN

MODEL 200
RED
YEL
GRN

LS9

LS11

LS12

LS13

LS14

LS15

FR1

FR2

FR3

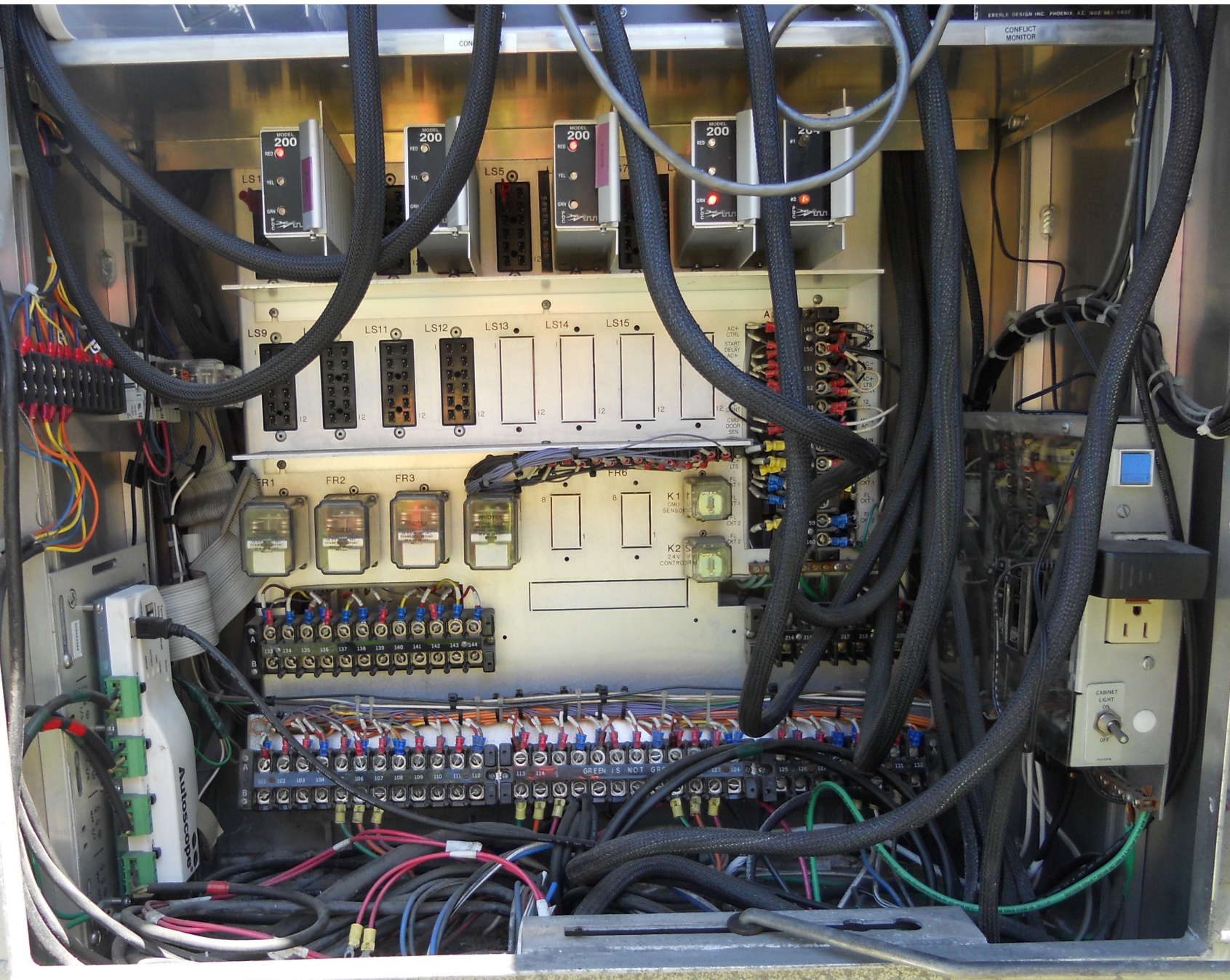
FR6

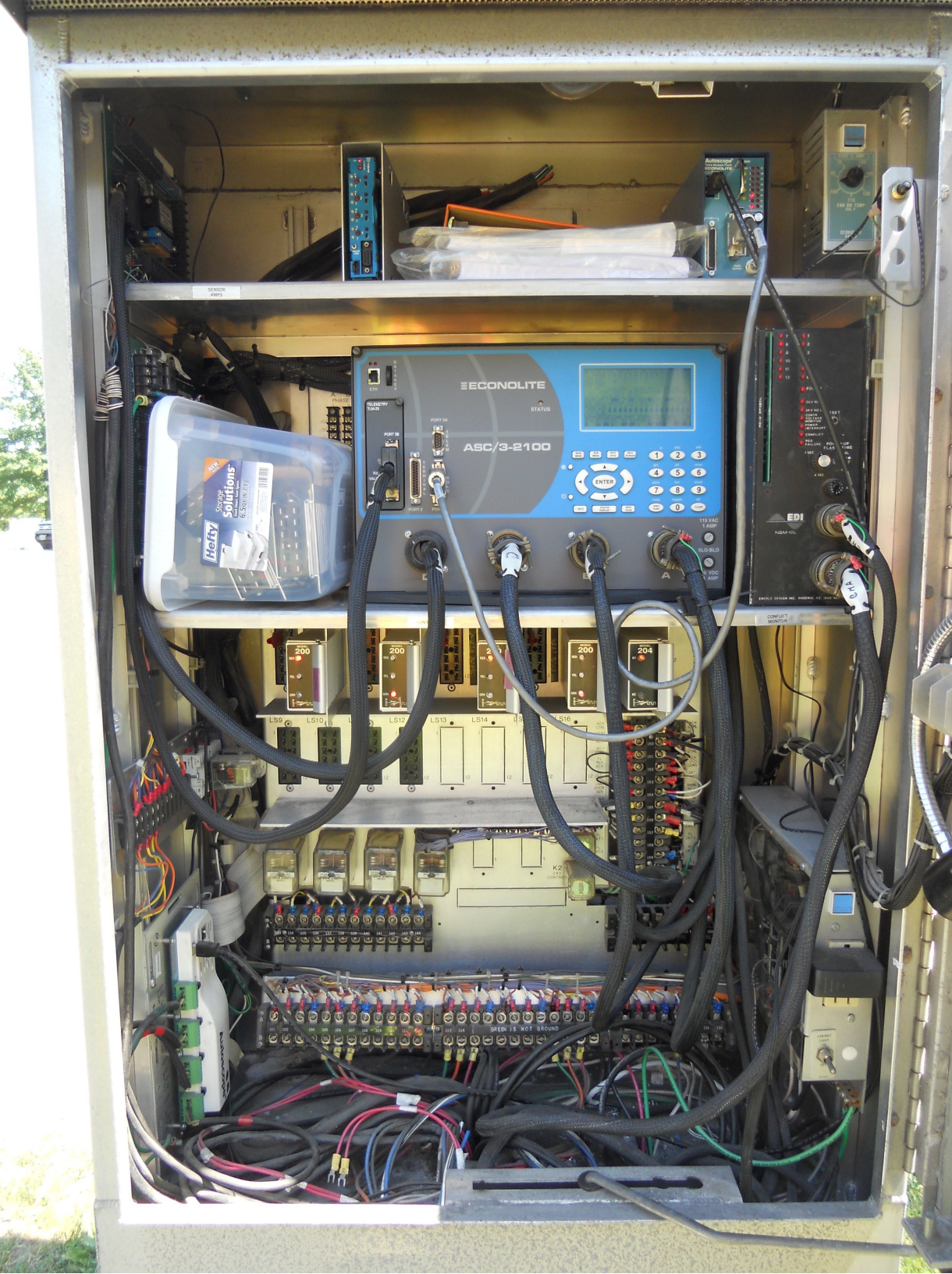
K1

K2

GREEN IS NOT GRN

CABINET LIGHT
ON
OFF



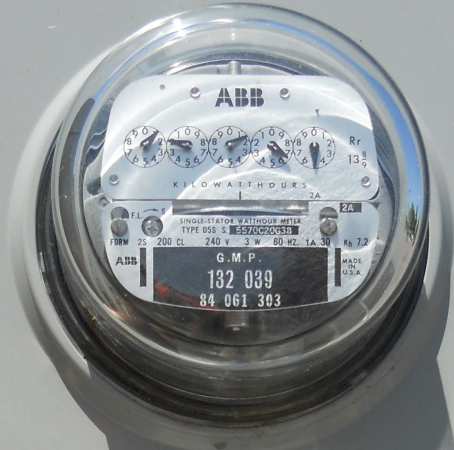


PROPERTY OF:
VT. AGENCY OF TRANS.
MAINTENANCE DIV.

IN EMERGENCY CALL:
DIST. TRANS. OFFICE
655-1580 COLCHESTER

NIGHTS & WEEKENDS: 878-7111

⚠ DANGER / PELIGRO
HAZARD OF ELECTRICAL SHOCK OR BURN
SERVICE BY UTILITY AUTHORIZED PERSONNEL ONLY
DO NOT PAINT OVER OR REMOVE THIS LABEL
PELIGRO DE DESCARGA ELÉCTRICA O QUEMADURA
SERVICIO PERSONAL AUTORIZADO DE LA COMPAÑÍA
ELÉCTRICA PUEDE MANTENERSE
NO PINTAR ENCIMA NI REMOVER ESTA ETIQUETA.



SERVICE DISCONNECT



⚠ DANGER / PELIGRO
HAZARD OF ELECTRICAL SHOCK OR BURN
SERVICE BY UTILITY AUTHORIZED PERSONNEL ONLY
DO NOT PAINT OVER OR REMOVE THIS LABEL
PELIGRO DE DESCARGA ELÉCTRICA O QUEMADURA
SERVICIO PERSONAL AUTORIZADO DE LA COMPAÑÍA
ELÉCTRICA PUEDE MANTENERSE
NO PINTAR ENCIMA NI REMOVER ESTA ETIQUETA.











ROOSEVELT HWY

HERCULES DR

00°70
04 05
00°62

LEFT
LANE
END







ROOSEVELT HWY
HERCULES DR



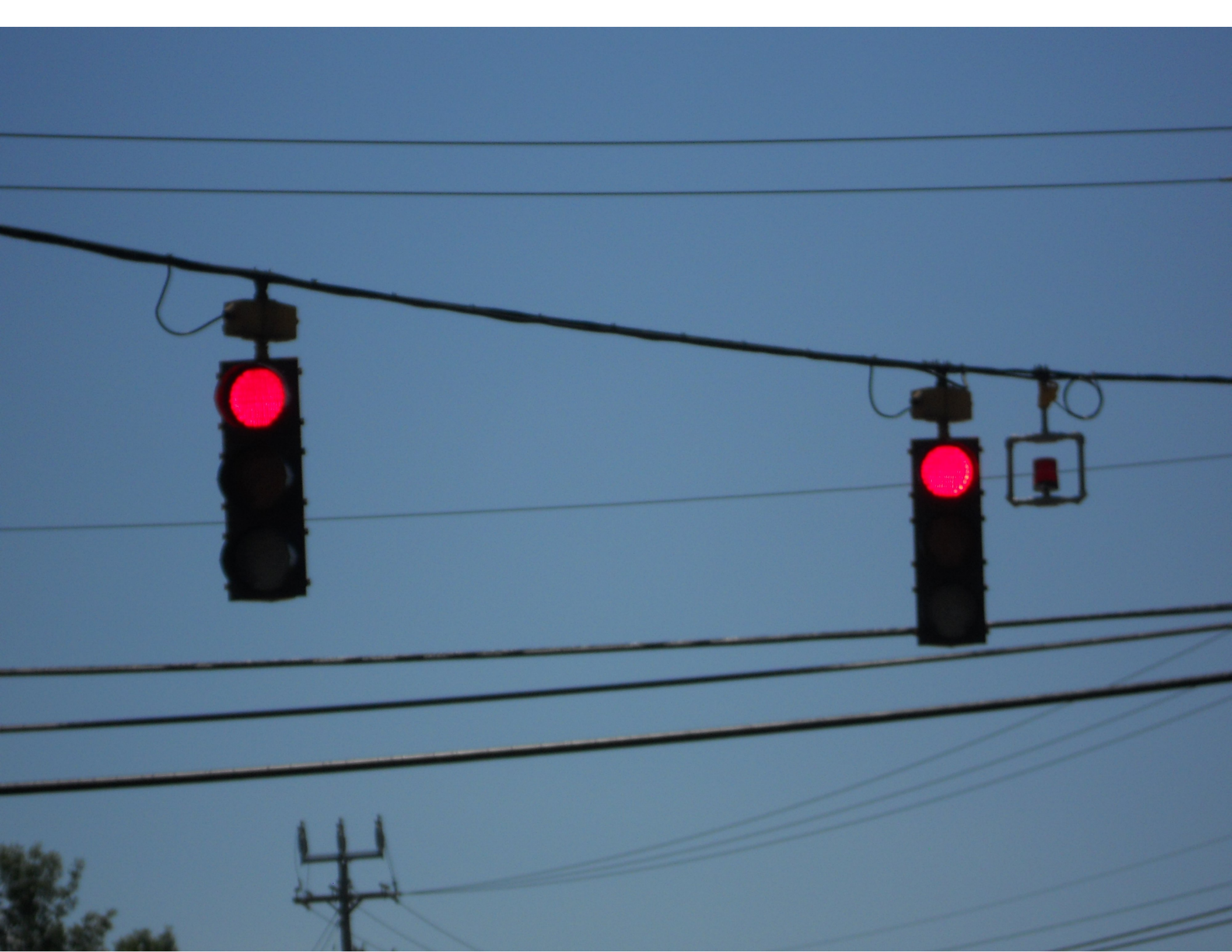




12.75
48KS10GA



















SENSOR
AMPS



ECONOLITE

STATUS

ASC/3-2100

ETH

TELEMETRY TLM-25

PORT 3A

PORT 3B

RX VALVE

PORT 2

PORT 1

ENTER

1 2 3

4 5 6

7 8 9

0

115 VAC
1 AMP

7

8

9

10

11

12

WER

4V NO 1

RESET

CONTR

VOLTAGE

MONITOR

POWER

INTERUPT

CONFLICT

RED

FAILURE

POWER-UP

FLASH TIME

7 SEC

10 KC

4 SEC

OFF

1 AMP

EDI

NE

2PL

CONFLICT

MONITOR

204





12751 132
48KS106A

Date: 08/09/2012

Timing Data:

Phase	1	2	3	4	5	6	7	8	9
Phases in use		x		x		x		x	
Min Green	0	8	0	8	0	30	0	8	0
Walk	0	0	0	0	0	0	0	0	0
Ped Clr	0	0	0	0	0	0	0	0	0
Veh Ext	0	2	0	2	0	2	0	2	0
MAX 1	0	40	0	20	0	40	0	20	0
MAX 2	0	40	0	8	0	40	0	8	0
MAX 3	0	58	0	20	0	58	0	20	0
Yellow	3	4	3	4	3	4	3	4	0
All Red	0	2	0	2	0	2	0	2	0
Recall to Max	0	0	0	0	0	0	0	0	0

Coordination Patterns: ACS3/Naztec Coord. Phases 2 & 6

Pattern 1								
Cycle Length	60	Offset	0	COS	111			
Splits	Ph 1	0	Ph 2	63	Ph 3	0	Ph 4	37
	Ph 5	0	Ph 6	63	Ph 7	0	Ph 8	37
	Ph 9	0	Ph 10	0	Ph 11	0	Ph 12	0
Pattern 2(21)								
Cycle Length	82	Offset	52	COS	211			
Splits	Ph 1	0	Ph 2	75	Ph 3	0	Ph 4	25
	Ph 5	0	Ph 6	75	Ph 7	0	Ph 8	25
	Ph 9	0	Ph 10	0	Ph 11	0	Ph 12	0
Pattern 3(41)								
Cycle Length	92	Offset	35	COS	311			
Splits	Ph 1	0	Ph 2	78	Ph 3	0	Ph 4	22
	Ph 5	0	Ph 6	78	Ph 7	0	Ph 8	22
	Ph 9	0	Ph 10	0	Ph 11	0	Ph 12	0

Day Plan [1]

Event	Action Plan	Step Begins
1	2	0700
2	1	0900
3	3	1500
4	5	2200
5	1	0600

Action Plan

Action Plan	Pattern
1	1
2	21
3	41
4	254-FREE
5	255-FLASH