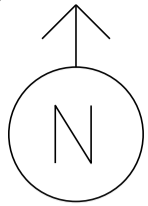


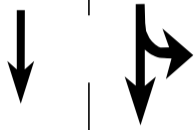
MS # 533



US 7 NORTH

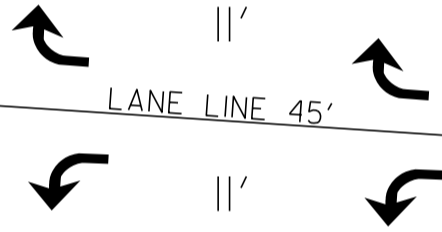
PRIVATE DRIVE

11' | 12' | 12' | 12'



STOP BAR 23'

STOP BAR 42'



LANE LINE 45'

16'

14'

HERCULES DR

STOP BAR 23'



12' | 12' | 12' | 11'

US 7 SOUTH

NOT TO SCALE