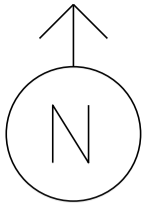



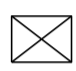
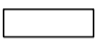
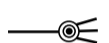


MS # 532



US 7 NORTH

-  PREEMPTION DETECTOR
-  PREEMPTION STROBE
-  VIDEO CAMERA
-  CONTROL BOX
-  VIDEO DETECTION
-  LUMINAIRE

RATHE RD

ONLY

4

4

4

4

9

9

8

8

8

8

2

2

CHAMPLAIN DR.

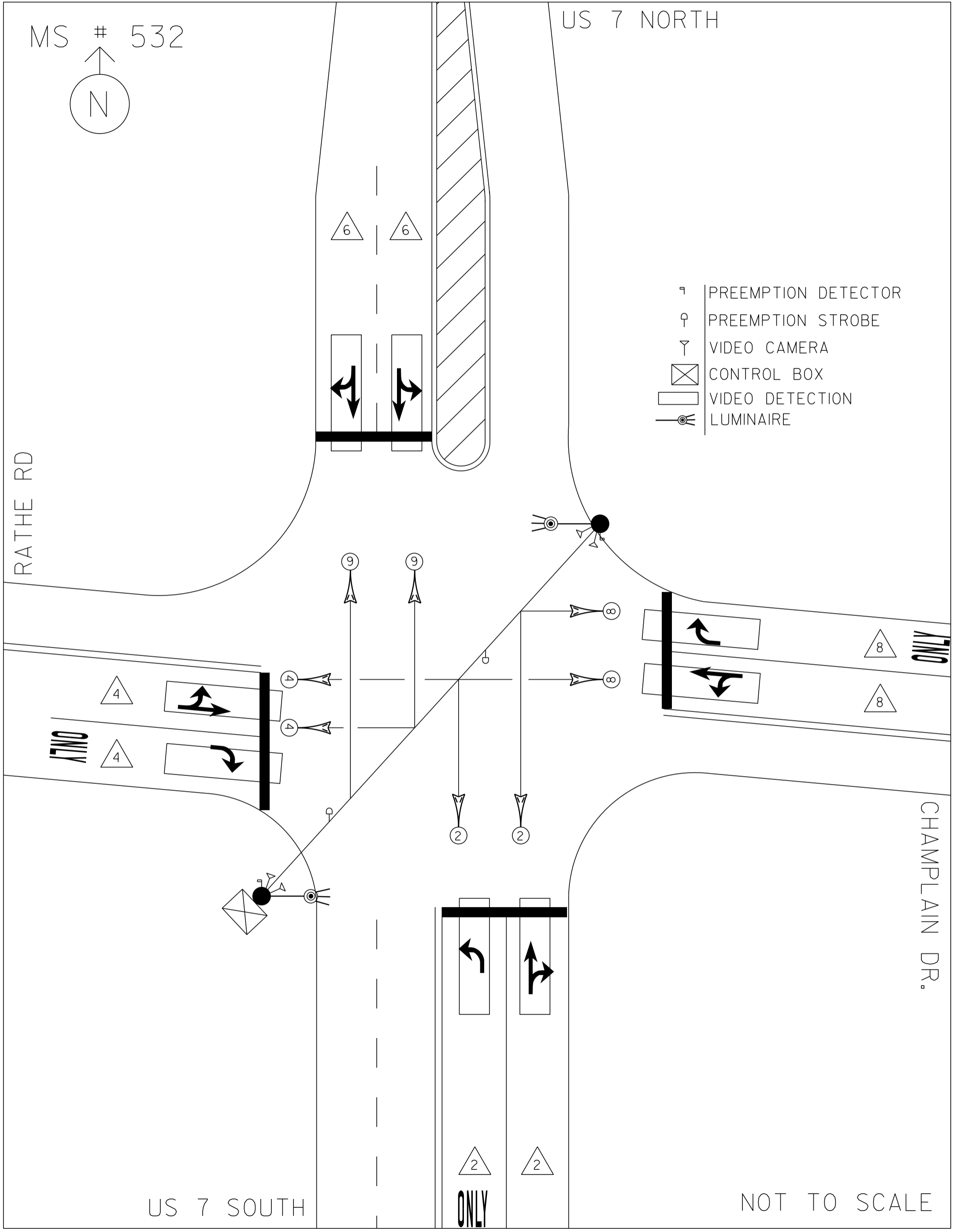
2

2

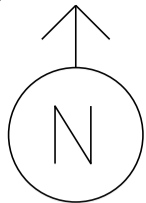
ONLY

US 7 SOUTH

NOT TO SCALE



MS # 532



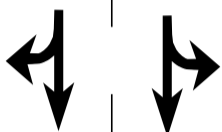
US 7 NORTH

RATHE RD

12'

11'

14'



STOP BAR 23'

12'

STOP BAR 27'

LANE LINE 55'

10'

ONLY

12'

LANE LINE 40'

STOP BAR 31'

11'

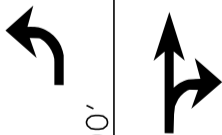
10'

ONLY

12'

CHAMPLAIN DR.

STOP BAR 25'



LANE LINE 300'

12'

12'


12'

12'

US 7 SOUTH

ONLY

NOT TO SCALE

<p style="writing-mode: vertical-rl; transform: rotate(180deg);">D I A G R A M</p> 				
<p>TIMING</p>	<p>G = Y =</p>	<p>G = Y =</p>	<p>G = Y =</p>	<p>G = Y =</p>
<p style="writing-mode: vertical-rl; transform: rotate(180deg);">D I A G R A M</p>				
<p>TIMING</p>	<p>G = Y =</p>	<p>G = Y =</p>	<p>G = Y =</p>	<p>G = Y =</p>



CYCLE LENGTH, C= _____ S



Small white rectangular label at the top of the cabinet with illegible text.

SMALLER WHITE LABEL WITH ILLEGIBLE TEXT.

Handle on the left side of the cabinet.

Two sets of horizontal vents on the front of the cabinet.

STREET SIGN: ST. JAMES ST.



WARNING

DO NOT OPERATE
CABINET WITHOUT
CONFLICT MONITOR UNIT

DANGER

115 VOLTS A.C.

SENSOR
AMPS



ECONOLITE

ASC/3-2100

TELEMETRY TLM-25

PORT 3A

PORT 3B

PORT 2

115-VAC 1 AMP

SLO-BLO

VDC 119

STATUS

ENTER

1 2 3

4 5 6

7 8 9

0

HELP

STATUS

HELP

FLASH

DUAL SEL.

OPTION

8421AB

AB000F

DI ENABLE

NO ENABLE

NO LATCH

CM LOG DISABLE

CM DISABLE

MLK DISABLE

1 2 3 4 5 6

7 8 9 10 11 12

SSM 123456

SSM 789012

ENABLE

ENABLE

1 AMP

ECONOLITE

CONTROL PRODUCTS INC.

MADE IN U.S.A.

SET AFTER MODIFYING SWITCHES

FAULT

MONITOR FAIL

RESET

POWER

MODE

PREV FAIL

115-VAC 1 AMP

ECONOLITE

CONTROL PRODUCTS INC.

MADE IN U.S.A.

CONTROLLER



CHB

CHB

CONTROLLER



LS3



LS5



LS7



LS9



LS9

LS10

LS11

LS12

LS13

LS14

LS15

LS16

FR1

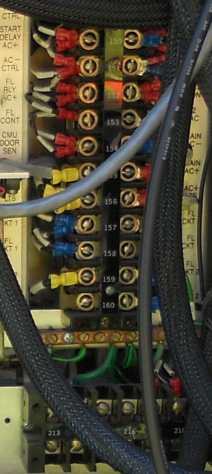
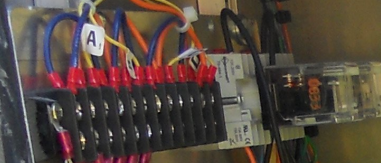
FR2

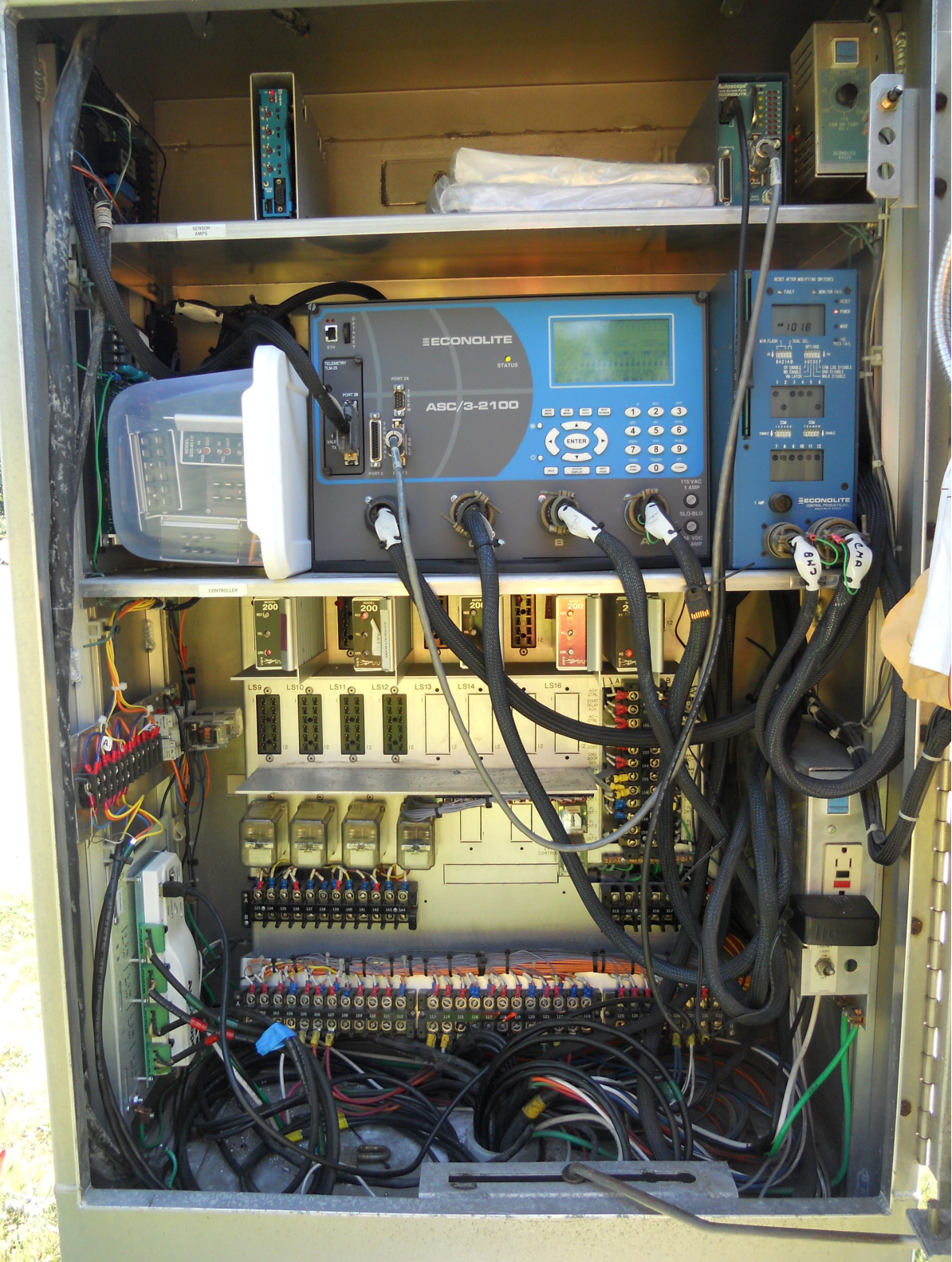
FR3

FR4

K1

K2





PROPERTY OF:
VT. AGENCY OF TRANS.
MAINTENANCE DIV.

IN EMERGENCY CALL:
DIST. TRANS. OFFICE
888-1580 COLCHESTER

NIGHTS & WEEKENDS 878-7111

⚠ DANGER / PELIGRO
HAZARD OF ELECTRICAL SHOCK OR BURN
SERVICED BY UTILITY AUTHORIZED PERSONNEL ONLY
DO NOT PULL COVER OR REMOVE THIS LABEL
PELIGRO DE DESCARGA ELÉCTRICA O QUEMADURA
SERVICIAR POR PERSONAL AUTORIZADO DE LA COMPAÑÍA
ELECTRICA NO PULLE LA CUBIERTA
NO PUEDE ENCENDIRSE NI PARARSE SÍ TIENE ETIQUETA



MILBANK
TYPE 31 E ENCLOSURE



⚠ DANGER / PELIGRO
HAZARD OF ELECTRICAL SHOCK OR BURN
SERVICED BY UTILITY AUTHORIZED PERSONNEL ONLY
DO NOT PULL COVER OR REMOVE THIS LABEL
PELIGRO DE DESCARGA ELÉCTRICA O QUEMADURA
SERVICIAR POR PERSONAL AUTORIZADO DE LA COMPAÑÍA
ELECTRICA NO PULLE LA CUBIERTA
NO PUEDE ENCENDIRSE NI PARARSE SÍ TIENE ETIQUETA



ONLY





ONLY



WALSH
Lighting
& Center





CHAMPLAIN DR

SPEED
LIMIT
50



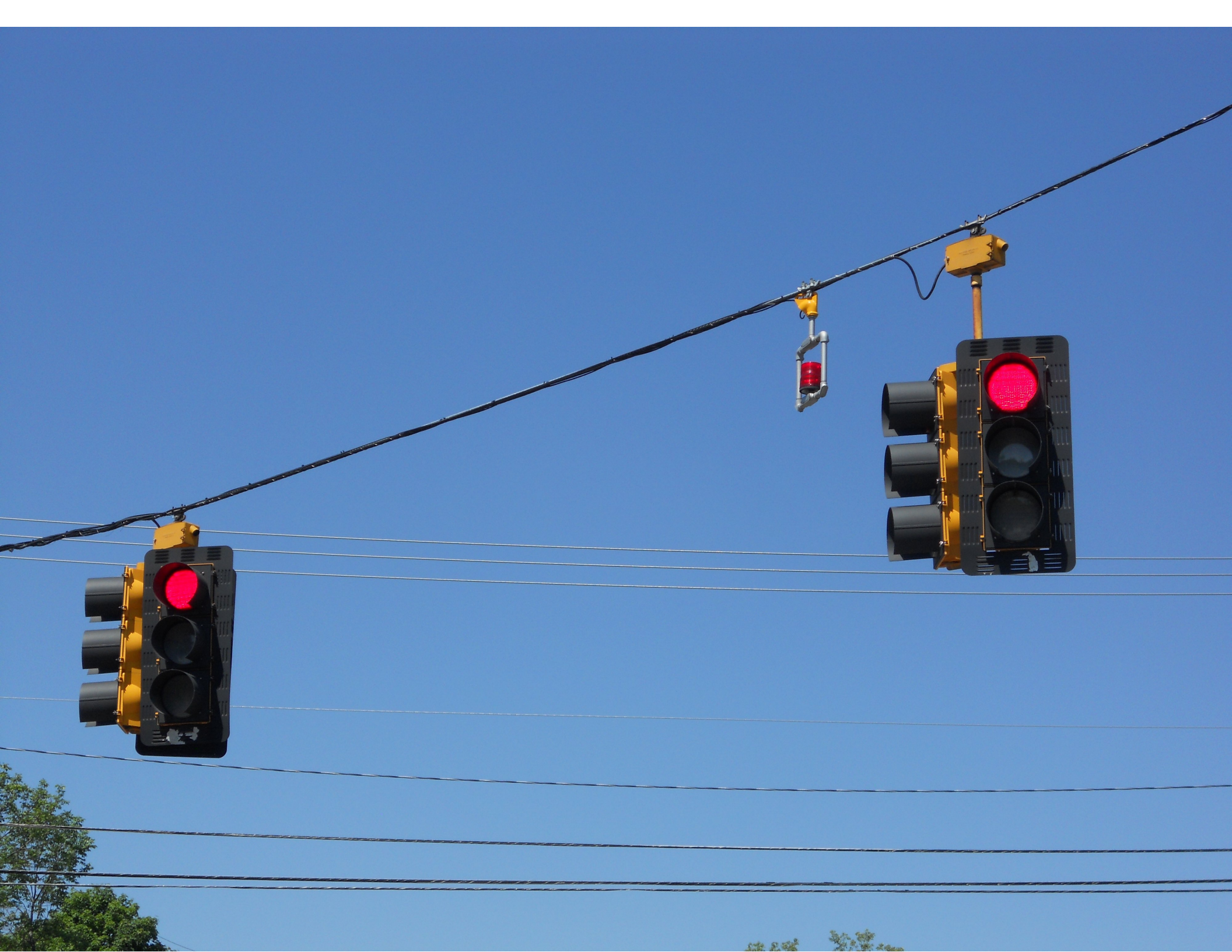
ONLY



CHAMPLAIN

BANK

← 50'







141N 34
48KS 136A

#1 - 200W - H.P.S. - III



ROOSEVELT PLAZA











RATHE RD





14.11.34
48 KS 136A

#2 - 200W - H.P.S. - III



Date: 08/09/2012

Timing Data:

Phase	1	2	3	4	5	6	7	8	9
Phases in use		x		x		x		x	
Min Green	0	39	0	8	0	39	0	8	0
Walk	0	0	0	0	0	0	0	0	0
Ped Clr	0	0	0	0	0	0	0	0	0
Veh Ext	0	2	0	2	0	2	0	2	0
MAX 1	0	40	0	8	0	40	0	8	0
MAX 2	0	56	0	14	0	56	0	14	0
MAX 3	0	62	0	18	0	62	0	18	0
Yellow	3	4	3	4	3	4	3	4	0
All Red	0	2	0	2	0	2	0	2	0
Recall to Max	0	0	0	0	0	0	0	0	0

Coordination Patterns: ACS3/Naztec Coord. Phases 2 & 6

Pattern 1								
Cycle Length	60	Offset	67	COS	111			
Splits	Ph 1	0	Ph 2	76	Ph 3	0	Ph 4	24
	Ph 5	0	Ph 6	76	Ph 7	0	Ph 8	24
	Ph 9	0	Ph 10	0	Ph 11	0	Ph 12	0
Pattern 2(21)								
Cycle Length	82	Offset	78	COS	211			
Splits	Ph 1	0	Ph 2	75	Ph 3	0	Ph 4	25
	Ph 5	0	Ph 6	75	Ph 7	0	Ph 8	25
	Ph 9	0	Ph 10	0	Ph 11	0	Ph 12	0
Pattern 3(41)								
Cycle Length	92	Offset	4	COS	311			
Splits	Ph 1	0	Ph 2	73	Ph 3	0	Ph 4	27
	Ph 5	0	Ph 6	73	Ph 7	0	Ph 8	27
	Ph 9	0	Ph 10	0	Ph 11	0	Ph 12	0

Day Plan [1]

Event	Action Plan	Step Begins
1	1	0600
2	2	0700
3	1	0900
4	3	1500
5	1	1800
6	5	2200

Action Plan

Action Plan	Pattern
1	1
2	21
3	41
4	254-FREE
5	255-FLASH