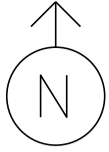


MS # 530



US 7 NORTH

- PREEMPTION DETECTOR
- PREEMPTION STROBE
- VIDEO CAMERA
- CONTROL BOX
- VIDEO DETECTION
- PULL BOX
- LUMINAIRE
- ROADWAY SIGN

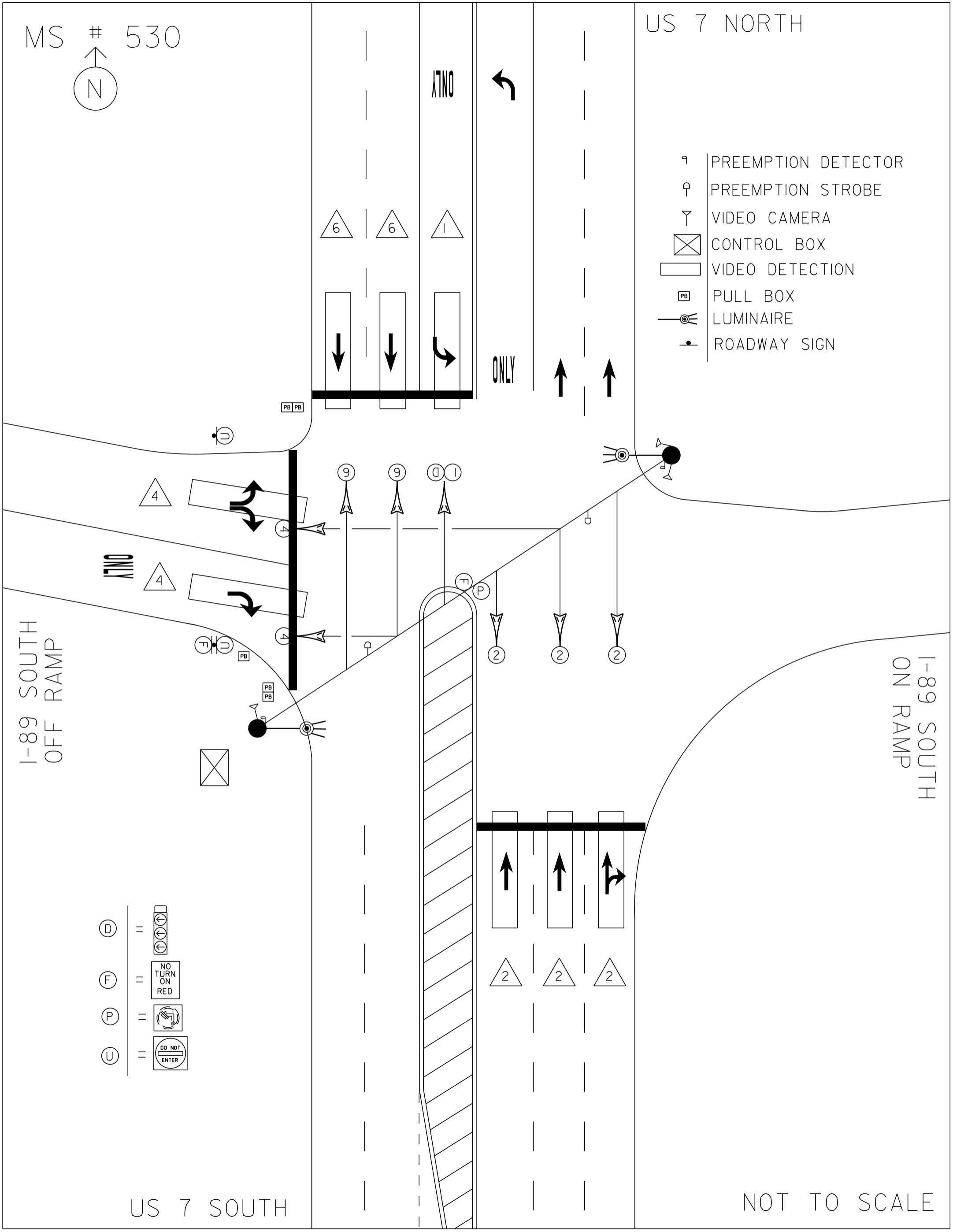
I-89 SOUTH OFF RAMP

I-89 SOUTH ON RAMP

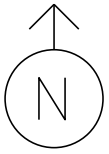
- =
- =
- =
- =

US 7 SOUTH

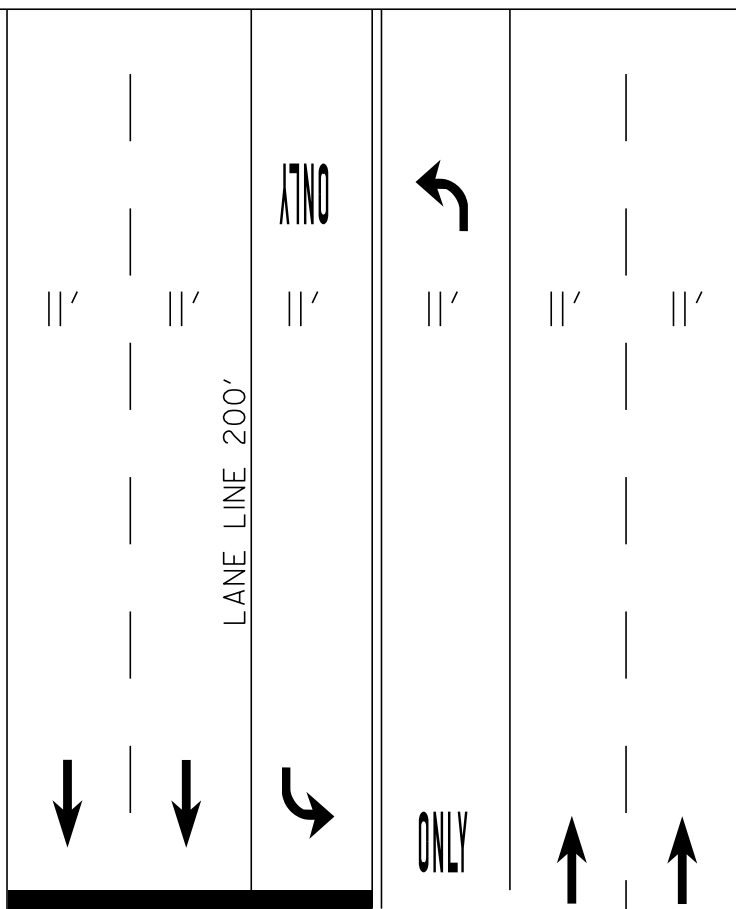
NOT TO SCALE



MS # 530



US 7 NORTH



14'

LANE LINE 160'

12'

ONLY

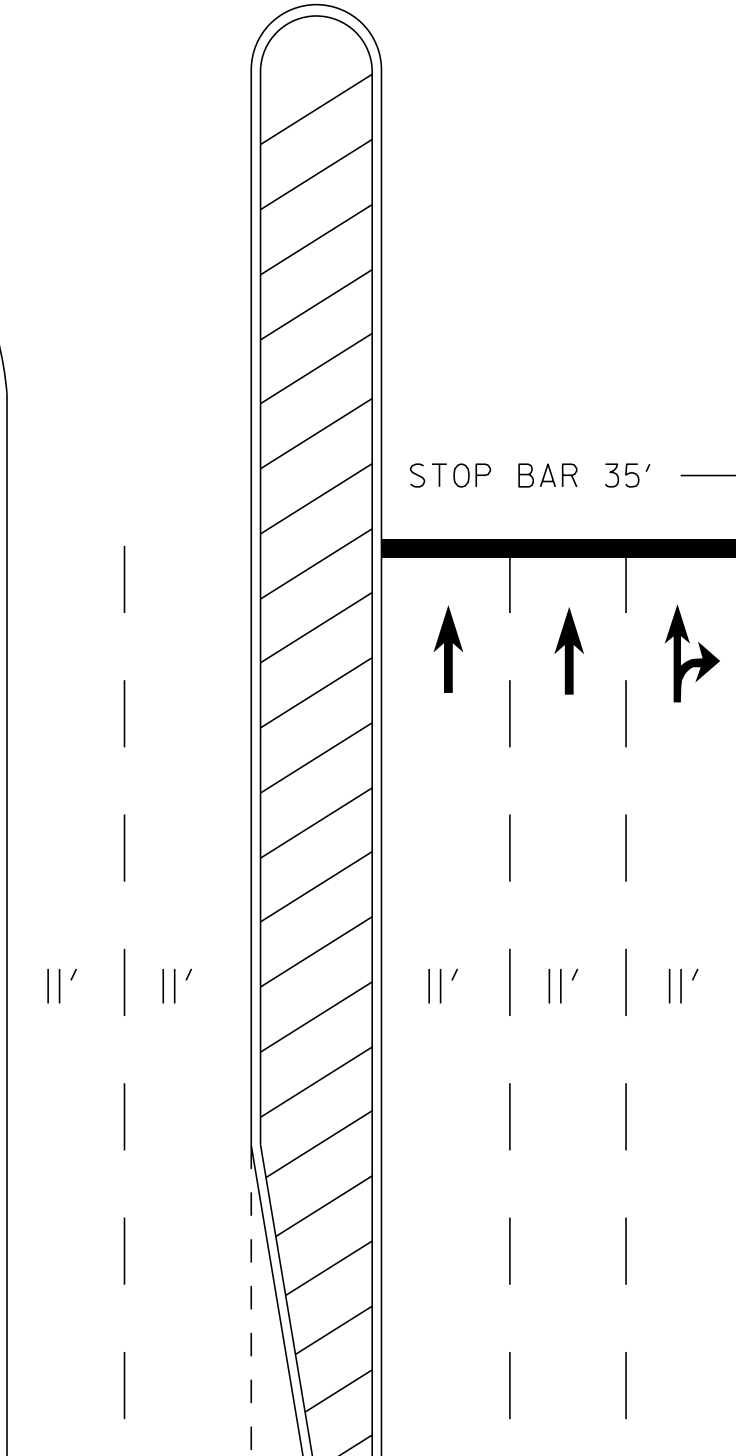
STOP BAR 52'

18'

I-89 SOUTH OFF RAMP

I-89 SOUTH ON RAMP

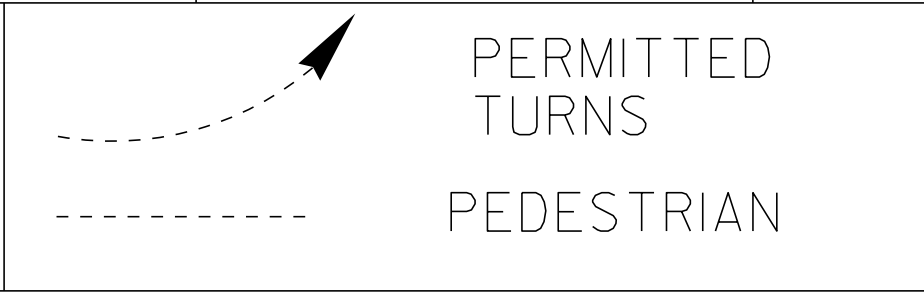
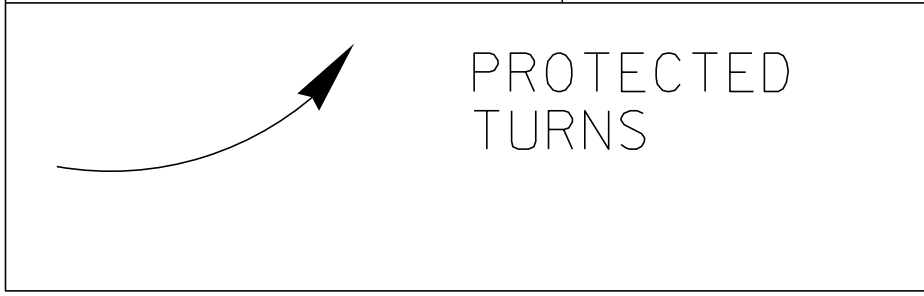
STOP BAR 35'



US 7 SOUTH

NOT TO SCALE

<p style="text-align: center;">D I A G R A M</p> <p style="text-align: center;">N ↑</p>				
<p style="text-align: center;">T I M I N G</p>	<p>G = Y =</p>	<p>G = Y =</p>	<p>G = Y =</p>	<p>G = Y =</p>
<p style="text-align: center;">D I A G R A M</p>				
<p style="text-align: center;">T I M I N G</p>	<p>G = Y =</p>	<p>G = Y =</p>	<p>G = Y =</p>	<p>G = Y =</p>



CYCLE LENGTH, C= _____ S



PROPERTY OF
VT. AGENCY OF TRANS.
MAINTENANCE DIV.
IN EMERGENCY CALL
DCT TRANS OFFICE
800-556-2262 EXT. 200
MON-FRI 8:00-5:00



PROPERTY OF:
VT. AGENCY OF TRANS.
MAINTENANCE DIV.

IN EMERGENCY CALL:
DIST. TRANS. OFFICE
655-1580 COLCHESTER

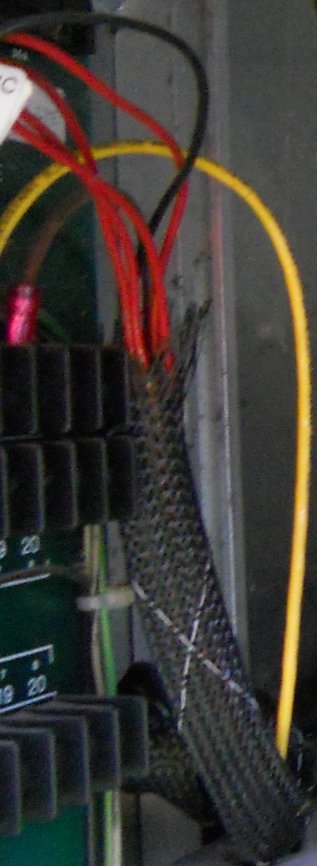
NIGHTS & WEEKENDS: 878-7111

WARNING
DO NOT OPERATE
CABINET WITHOUT
CONFLICT MONITOR UNIT

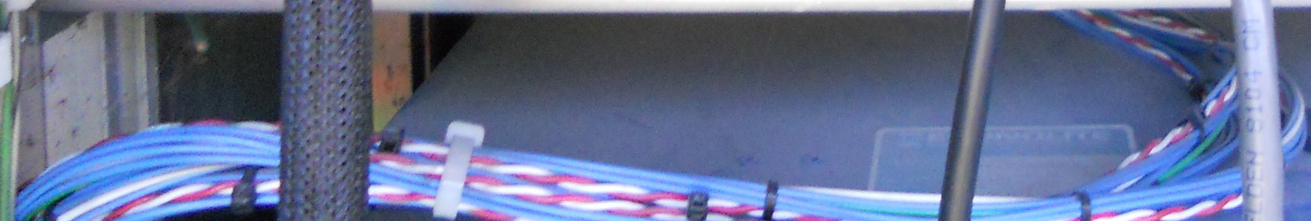
DANGER
115 VOLTS A.C.

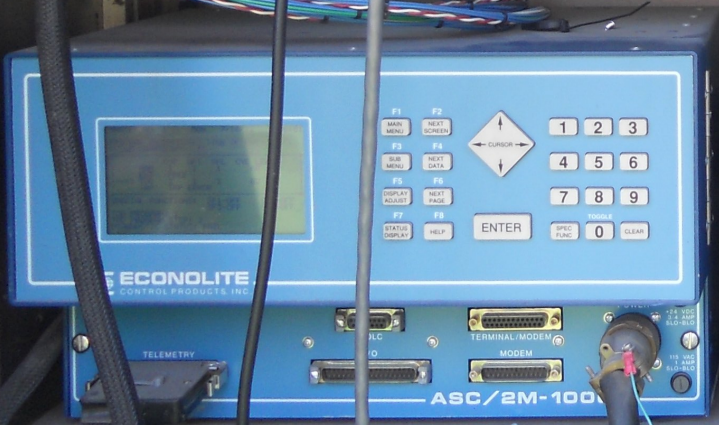
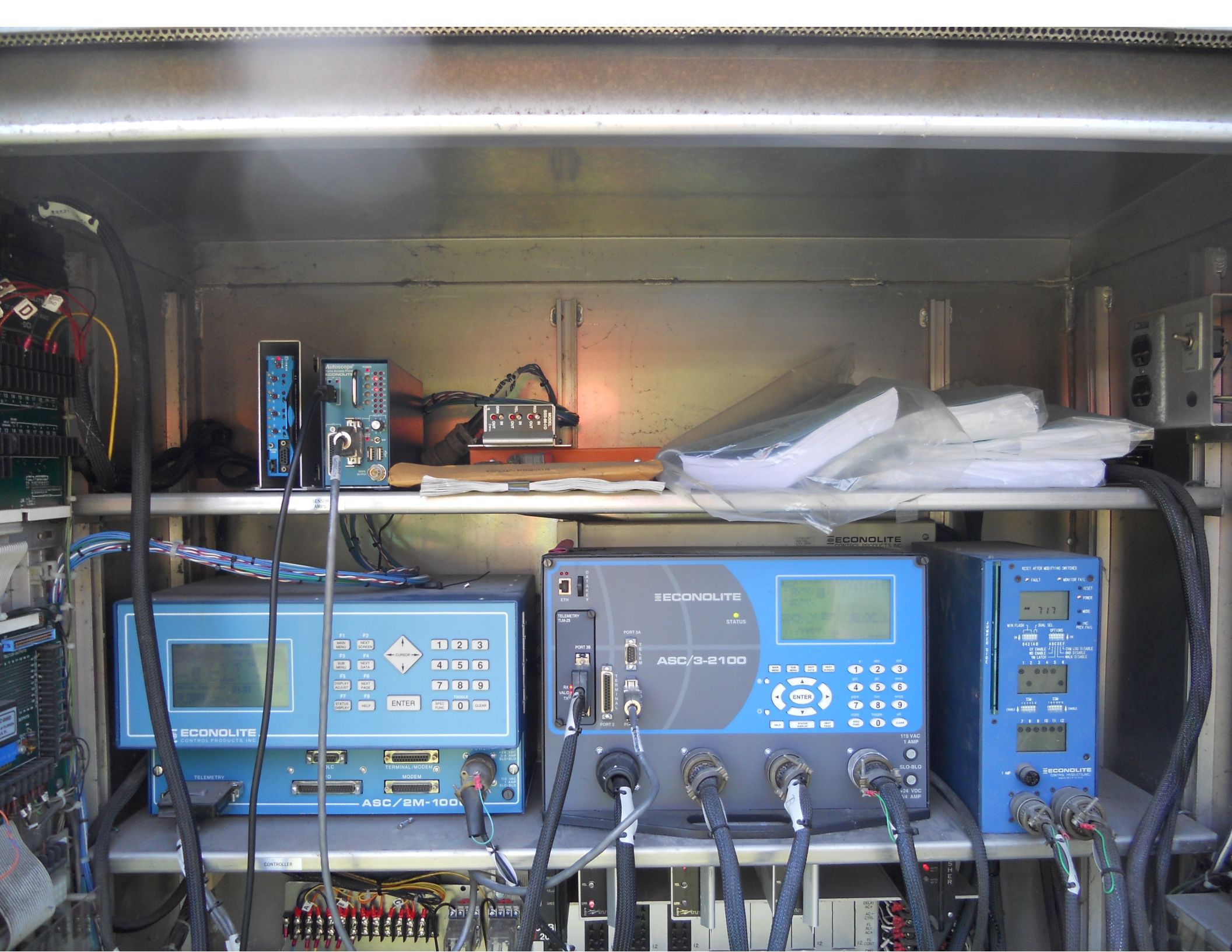


22.31



SENSOR AMPS





CONTROLLER

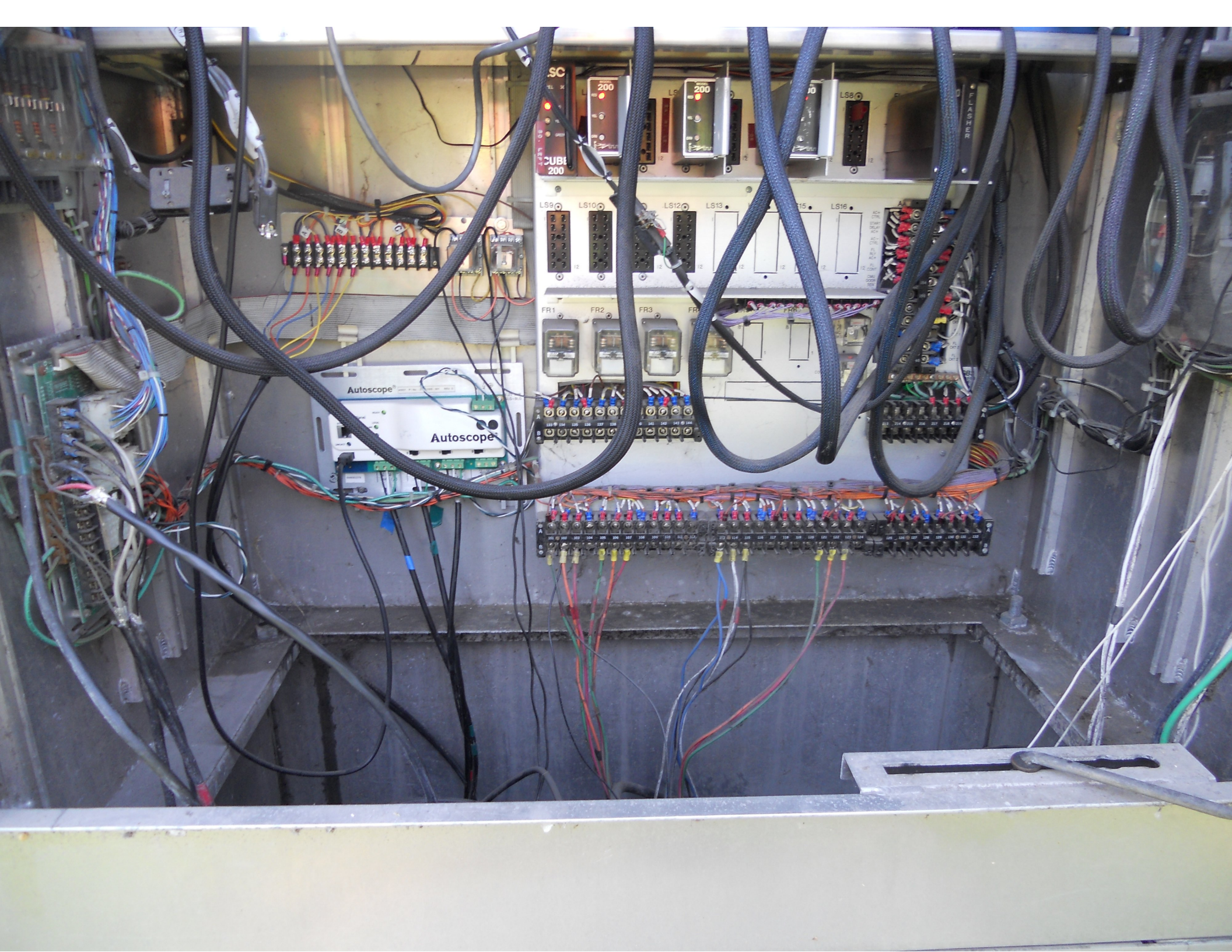
ECONOLITE
CONTROL PRODUCTS INC.

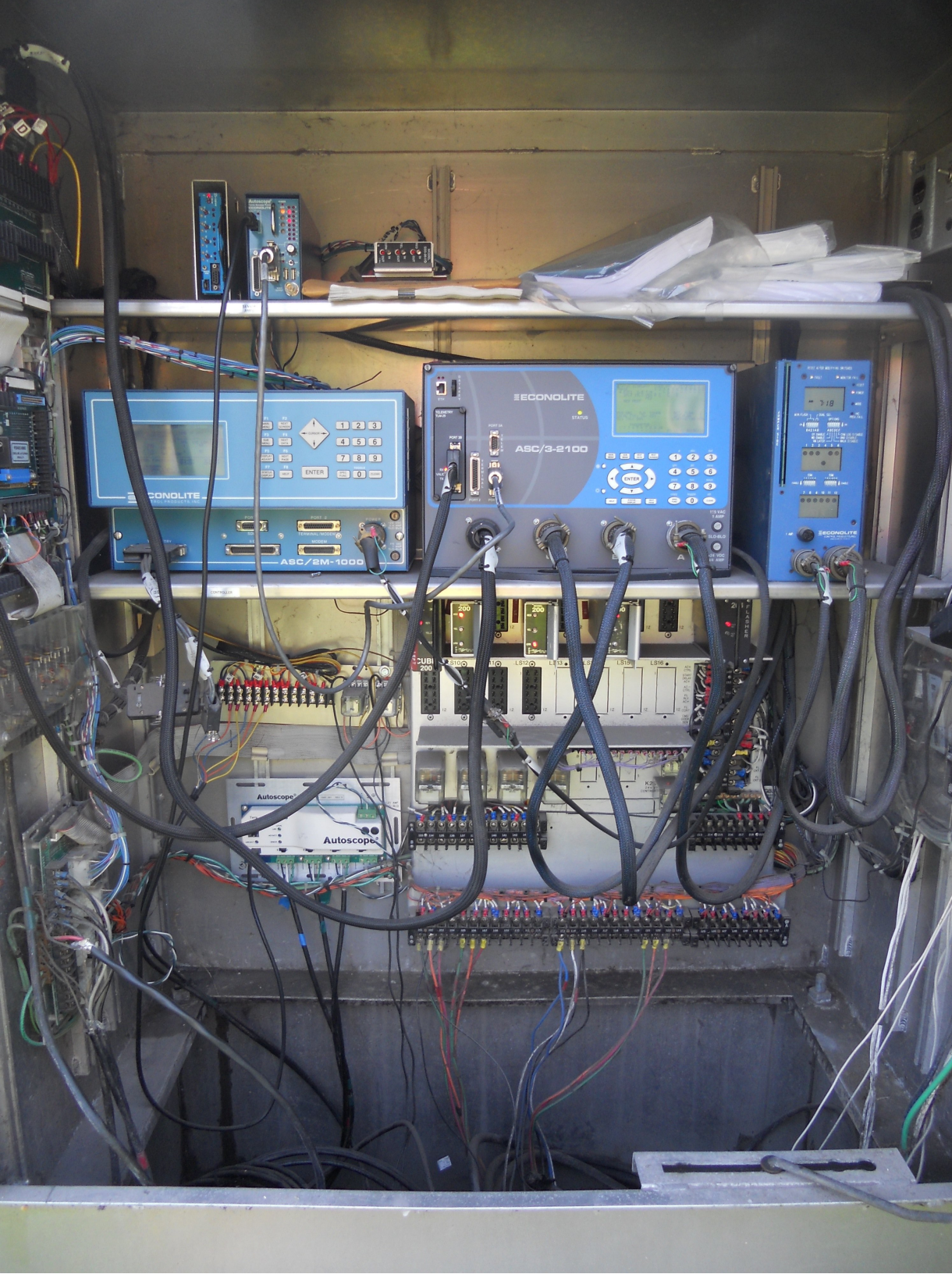
ASC/3-2100

ECONOLITE
CONTROL PRODUCTS INC.

ASC/2M-100

ECONOLITE
CONTROL PRODUCTS INC.







COLCHESTER
HALLETTS BAY
BURLINGTON
NORTH
89
SOUTH
89

Colchester

NO LEFT TURN

NO RIGHT TURN



49 NORTH
←

West NORTH
2 Colchester
↓

Worker in high-visibility vest and orange cap, holding a clipboard and standing on the right shoulder.







#7-200W-H.P.S.-III

121N32
40K6136A







NO
TURN
ON RED



NORTH

SOUTH



WEST

EAST



WINOOSKI 1 →

TO

VERMONT
15

→



ONLY

ONLY





NO
TURN
ON RED



NO
TURN
ON
RE

← ONE



13 IN 32
48 KSI 136A

#6-200W-H.P.S.-III



↑ COLCHESTER 4

↑ MALLETT'S BAY 4

BURLINGTON 4 →

NORTH

SOUTH

INTERSTATE
89

INTERSTATE
89

↑

→

89 NORTH
←

West
89 NORTH
Colchester
↓



Date: 08/09/2012

Timing Data:

Phase	1	2	3	4	5	6	7	8	9
Phases in use	x	x		x		x			
Min Green	12	10	0	5	0	10	0	0	0
Walk	0	0	0	0	0	0	0	0	0
Ped Clr	0	0	0	0	0	0	0	0	0
Veh Ext	2	2	0	2	0	2	0	2	0
MAX 1	16	18	0	10	0	18	0	0	0
MAX 2	29	11	0	24	0	11	0	0	0
MAX 3	36	30	0	8	0	36	0	0	0
Yellow	4	4	3	4	3	4	3	4	0
All Red	2	2	0	2	0	2	0	2	0
Recall to Max	0	0	0	0	0	0	0	0	0

Coordination Patterns: ACS3/Naztec Coord. Phases 2 & 6

Pattern 1									
Cycle Length	60	Offset	57	COS	111				
Splits	Ph 1	35	Ph 2	40	Ph 3	0	Ph 4	25	
	Ph 5	0	Ph 6	40	Ph 7	0	Ph 8	0	
	Ph 9	0	Ph 10	0	Ph 11	0	Ph 12	0	
Pattern 2(21)									
Cycle Length	82	Offset	5	COS	211				
Splits	Ph 1	47	Ph 2	20	Ph 3	0	Ph 4	33	
	Ph 5	0	Ph 6	67	Ph 7	0	Ph 8	0	
	Ph 9	0	Ph 10	0	Ph 11	0	Ph 12	0	
Pattern 3(41)									
Cycle Length	92	Offset	88	COS	311				
Splits	Ph 1	38	Ph 2	44	Ph 3	0	Ph 4	18	
	Ph 5	0	Ph 6	82	Ph 7	0	Ph 8	0	
	Ph 9	0	Ph 10	0	Ph 11	0	Ph 12	0	

Day Plan [1]

Event	Action Plan	Step Begins
1	1	0600
2	2	0700
3	1	0900
4	3	1500
5	1	1800
6	5	2200

Action Plan

Action Plan	Pattern
1	1
2	21
3	41
4	254-FREE
5	255-FLASH