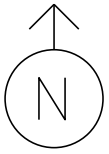
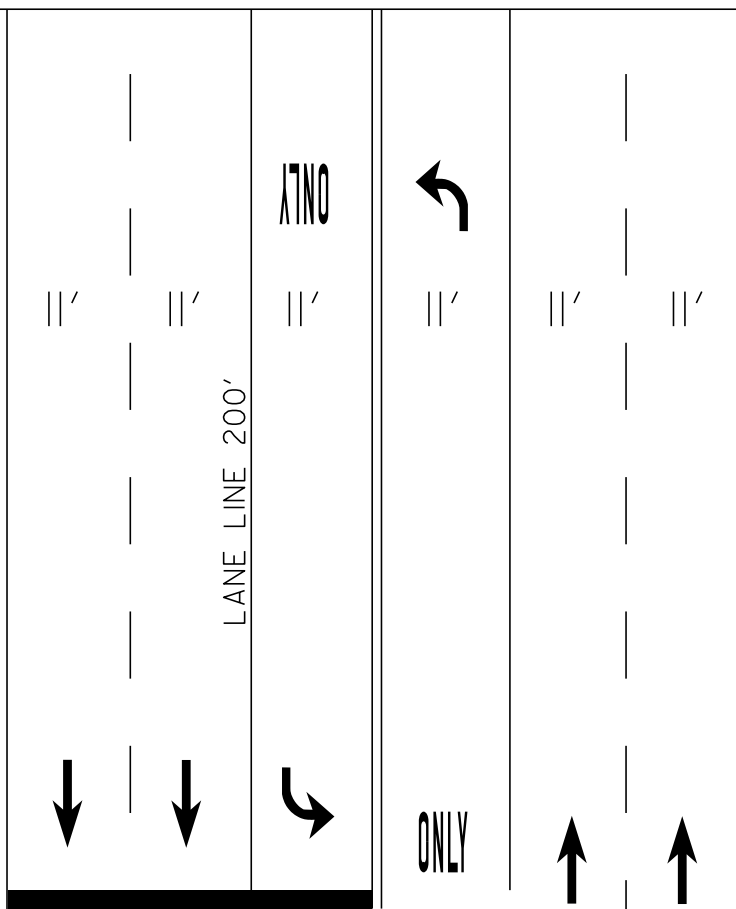


MS # 530



US 7 NORTH



STOP BAR 32'

14'

LANE LINE 160'

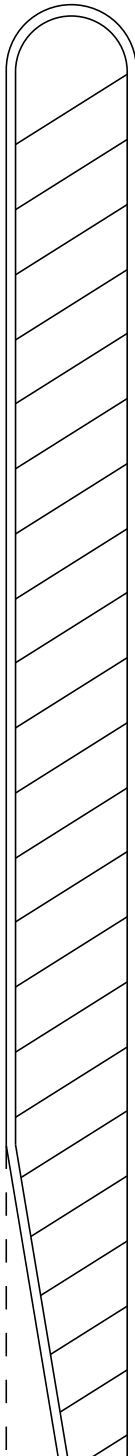
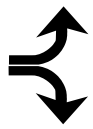
12'

ONLY

STOP BAR 52'

18'

I-89 SOUTH
OFF RAMP



STOP BAR 35'

I-89 SOUTH
ON RAMP

11' | 11'

11' | 11' | 11'

US 7 SOUTH

NOT TO SCALE