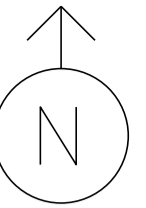


MS # 529

US 7 NORTH



WHITCOMB STREET

HIGHPOINT CENTER







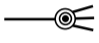
ONLY

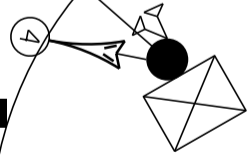
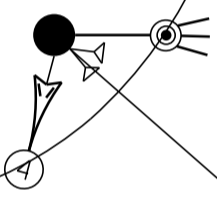
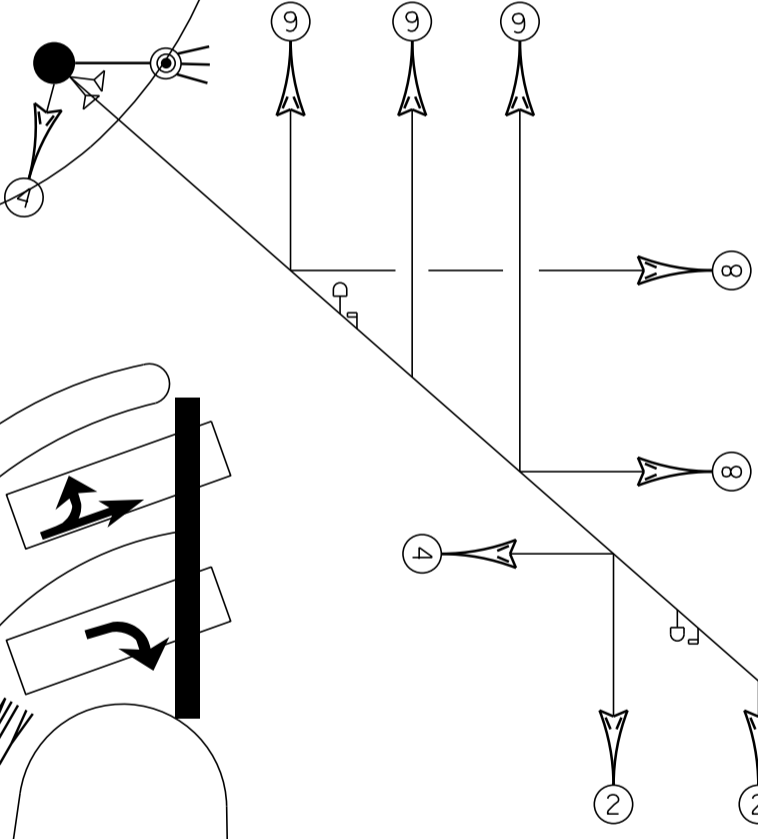
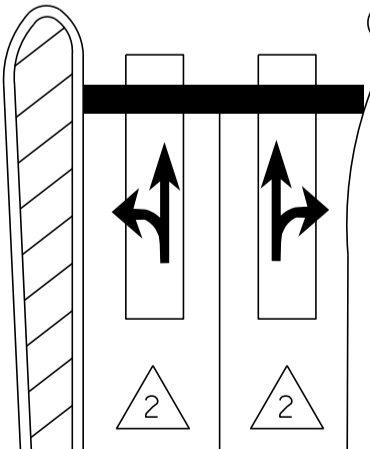
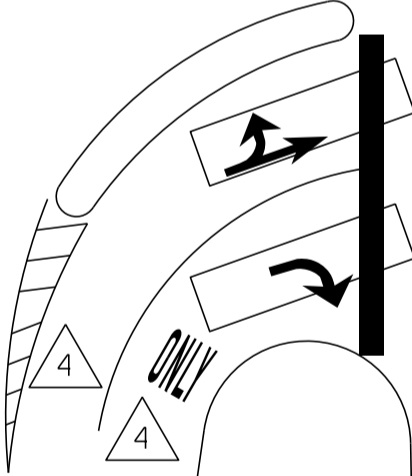
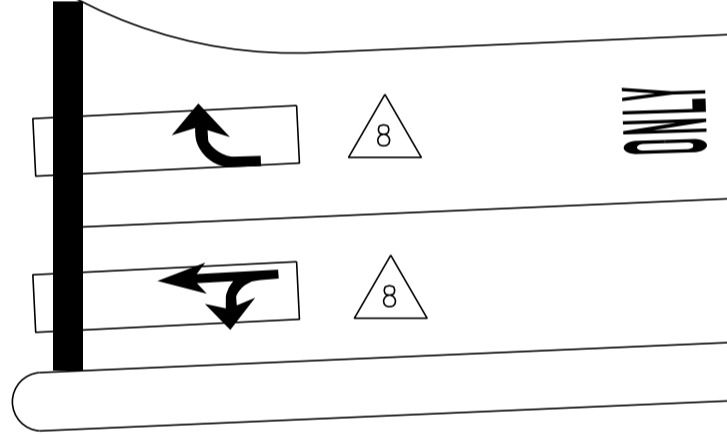
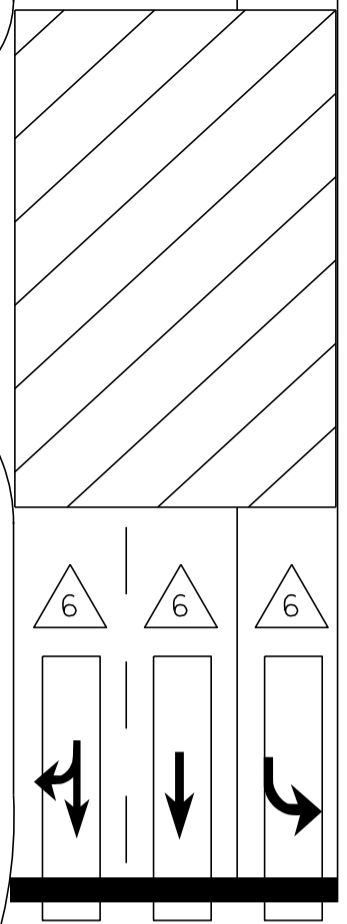
ONLY

SOUTH PARK DRIVE

US 7 SOUTH

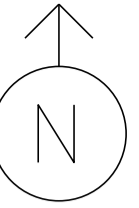
NOT TO SCALE

-  PREEMPTION DETECTOR
-  PREEMPTION STROBE
-  VIDEO CAMERA
-  CONTROL BOX
-  VIDEO DETECTION
-  PULL BOX
-  LUMINAIRE

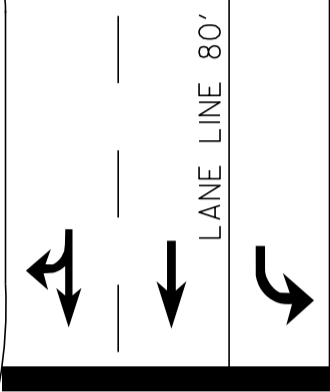
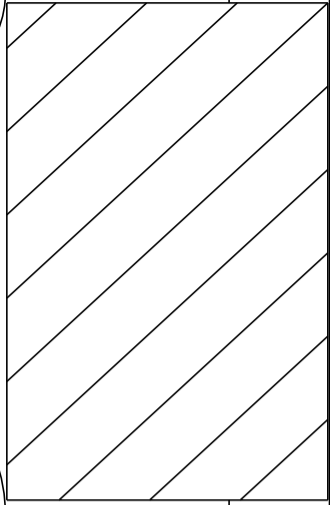


MS # 529

US 7 NORTH



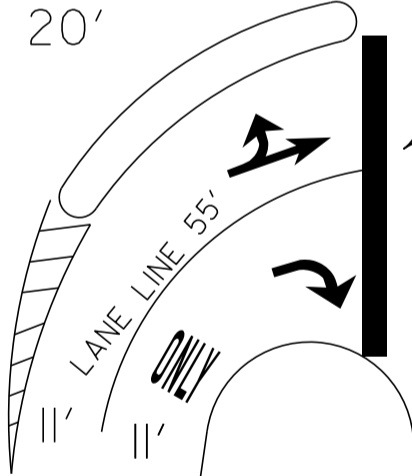
WHITCOMB STREET



STOP BAR 36'

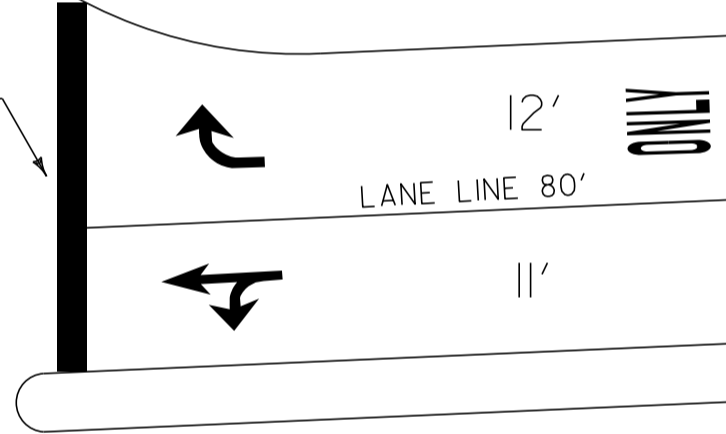
HIGHPOINT CENTER

20'



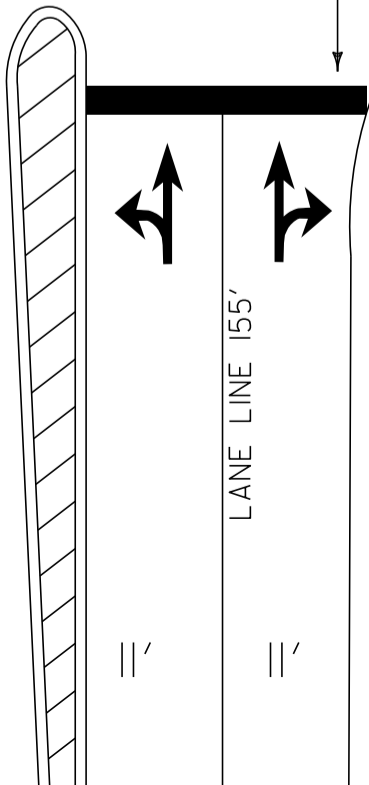
STOP BAR 31'

STOP BAR 33'



18'

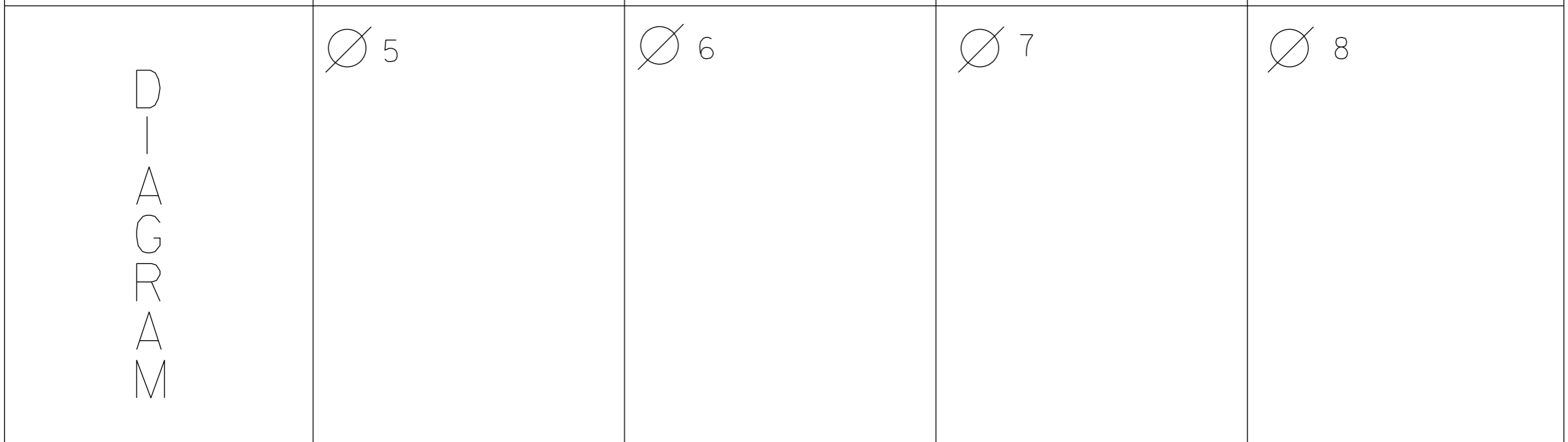
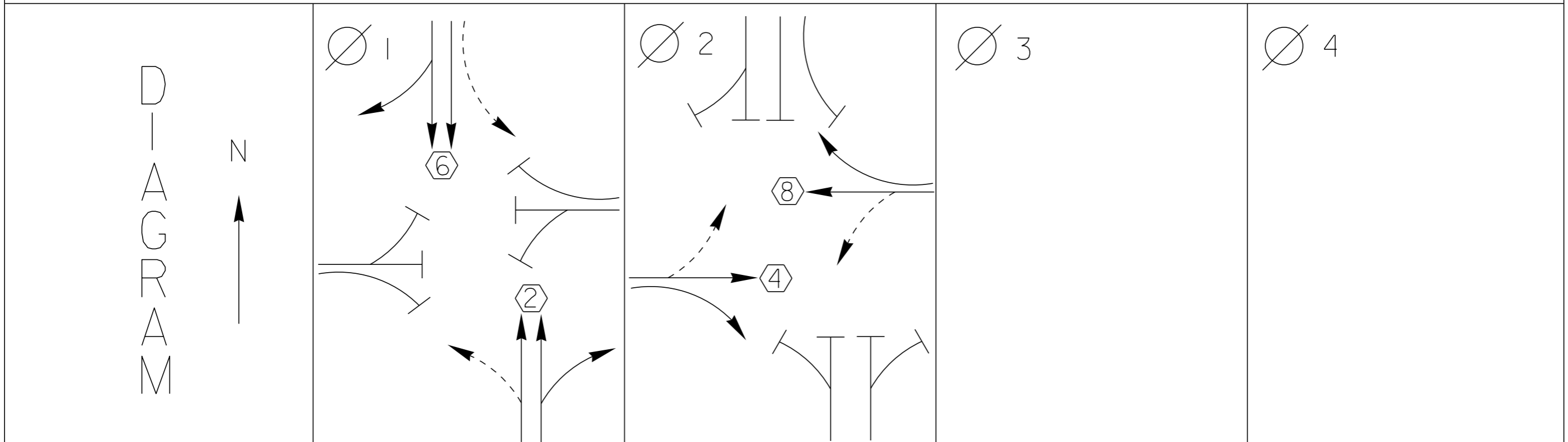
STOP BAR 25'



SOUTH PARK DRIVE

US 7 SOUTH

NOT TO SCALE





PROPERTY OF
AGENCY OF TRANS
MAINTENANCE BY
IN THE FIELD
BY THE USER
SERIAL NUMBER
DATE & LOCATION MARK



WARNING

DO NOT OPERATE
CABINET WITHOUT
CONFLICT MONITOR UNIT

DANGER

115 VOLTS A.C.

CONNECT
EARTH GROUND
HERE
REMOVE THIS TAG BEFORE CONNECTION



ECONOLITE

STATUS

ASC/3-2100

115 VAC
1 AMP

SLO-BLO

24 VDC
3/4 AMP

ETHERNET

PORT 3A

PORT 3B

PORT 2

PORT 1

TELEMETRY TLM-25

ETH

DATA TAKEY

ENTER

1 2 3

4 5 6

7 8 9

0 CLEAR

HELP STATUS DISPLAY NEXT PAGE

MAIN MENU SUB MENU NEXT DATA NEXT SCREEN

glt jst mwr

brnck top wdrk

snpp toggle alt

SPC FUNC

INC. MCM DC

RED SO

CONTROLLER

RESET AFTER MODIFYING SWITCHES

FAULT MONITOR FAIL

RESET POWER

MODE INC. PREV. FAIL

MIN. FLASH

DUAL SEL.

OPTIONS

8 4 2 1 A B

A B C D E F

CM LOG DISABLE

WALK DISABLE

1 2 3 4 5 6

JUMPER SIDE

SSM

7 8 9 10 11 12

ENABLE

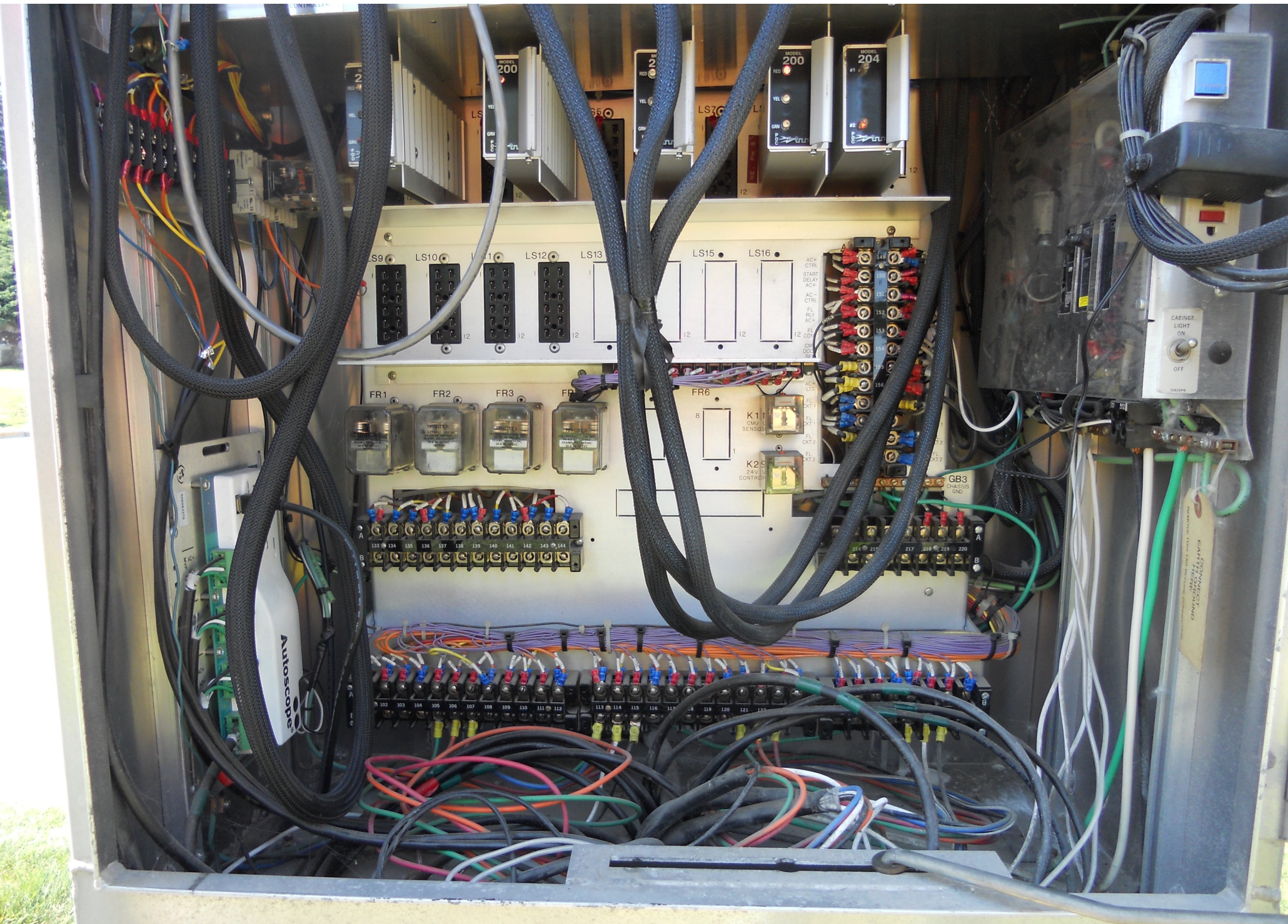
ECONOLITE

CONTROL PRODUCTS, INC.

MADE IN U.S.A.

1 AMP

MONITOR



MODEL 200

MODEL 200

MODEL 204

LS9

LS10

LS11

LS12

LS13

LS15

LS16

FR1

FR2

FR3

FR4

FR6

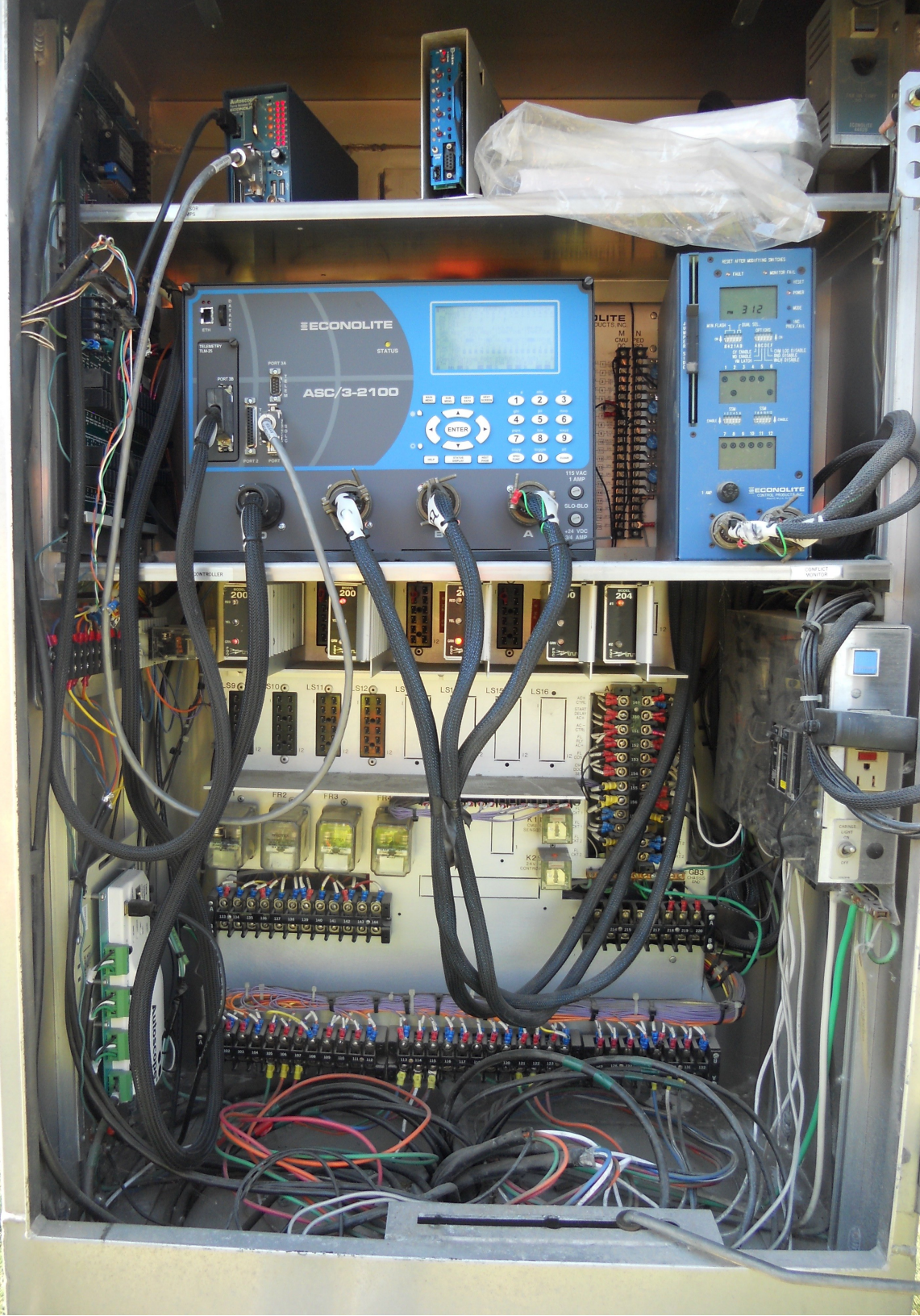
AC-CTRL
START
DELAY
AC-
AC-
CTRL
FL REL
AC-
EL COP
DO

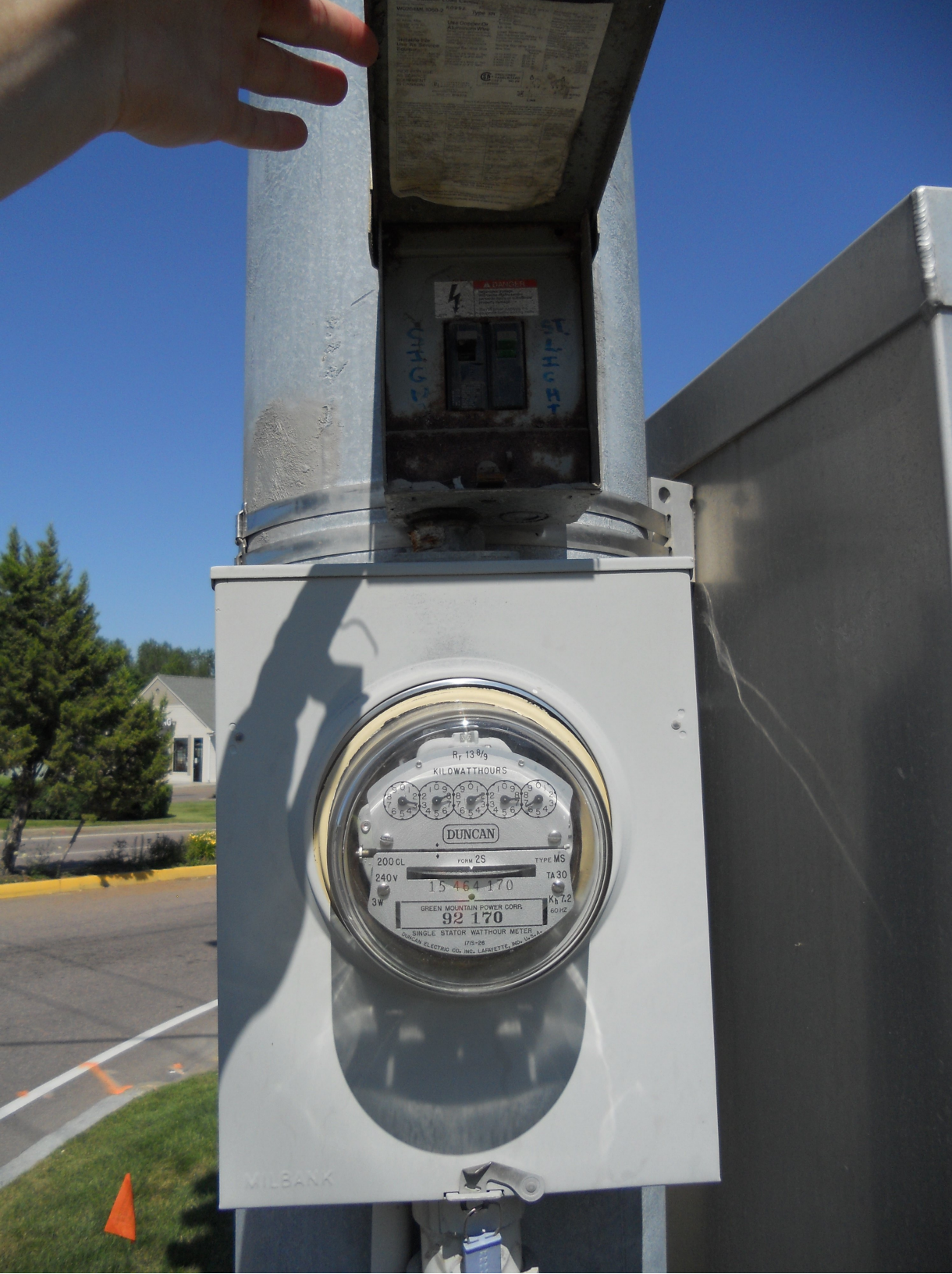
K11
CML
SENSQ
K2S
24V
CONTROL

GB3
CHASSIS

Autoscope

COMMUNICATIONS
EQUIPMENT





SALES
DATE
METER NO.
METER TYPE
METER CLASS
METER RATING
METER LOCATION
METER STATUS
METER COMMENTS

WARNING
ELECTRIC SHOCK
Hazardous Voltage

WHTCH
WHTCH

R_r 130/g
KILOWATTHOURS

9	0	0	0	0	0
8	9	8	7	6	5
7	6	5	4	3	2
6	5	4	3	2	1

DUNCAN

200 GL FCW 2S TYPE MS
240 V TA 30
3 W K_t 7.2 60 HZ

GREEN MOUNTAIN POWER CORR.
92 170

SINGLE STATOR WATTHOUR METER
DUNCAN ELECTRIC CO. INC. LANSETTE, MD. U.S.A.
075-88

MILBANK



**COLCHESTER
BUSINESS PARK**

HOTEL & RESTAURANT
QUALITY INN
VTR

Blue Line Diner

Colchester
Dental Group
& Aesthetic Center

Vermont In
Automatic Undergarment
(802) 892-XXXX





WICKLIFF CT
↑





COLCHESTER BUSINESS PARK

INCUBATOR CENTER
ATTN: ONLY

Wt
Commercial
Real Estate
SERVICES





COLCHESTER
BUSINESS PARK

beyo

HIGHPOINT
CENTER

WEST VIRGINIA
EAR 787

CIVIC

LX



HIGHPOINT
CENTER
ATIRCKS DINER

ONE WAY
MERGE
LEFT

↑
↗
ONLY





#2 - 250W - HPS

14 IN 34
48 K S 136 A

HIGHPOINT CTR PVT

106
HIGHPOINT
CENTER
A.M. Peisch & Company, LLP
CERTIFIED PUBLIC ACCOUNTANTS
The UNIVERSITY of VERMONT



106
HIGHPOINT
CENTER

HIGHPOINT

BURGER KING

ONLY



89 NORTH
WEST NORTH
2 7
Colchester

COLCHESTER 4
MALLETS BAY 4
BURLINGTON 4
NORTH SOUTH
89 89

Shell
Regular 357
Plus 371
V-Power
Diesel

Vt
COMMERCIAL
Concerning
This Property
864-2000
WWW.VTCOMMERCIAL.COM
COMMERCIAL



DOLLARS DEALS
DISCOUNT WORLD

FREE
GOLF
WITH \$15
PURCHASE

COMMUNITY
CENTER
RECREATION CENTER





HIGHPOINT DR

THE HIGHPOINT CENTER

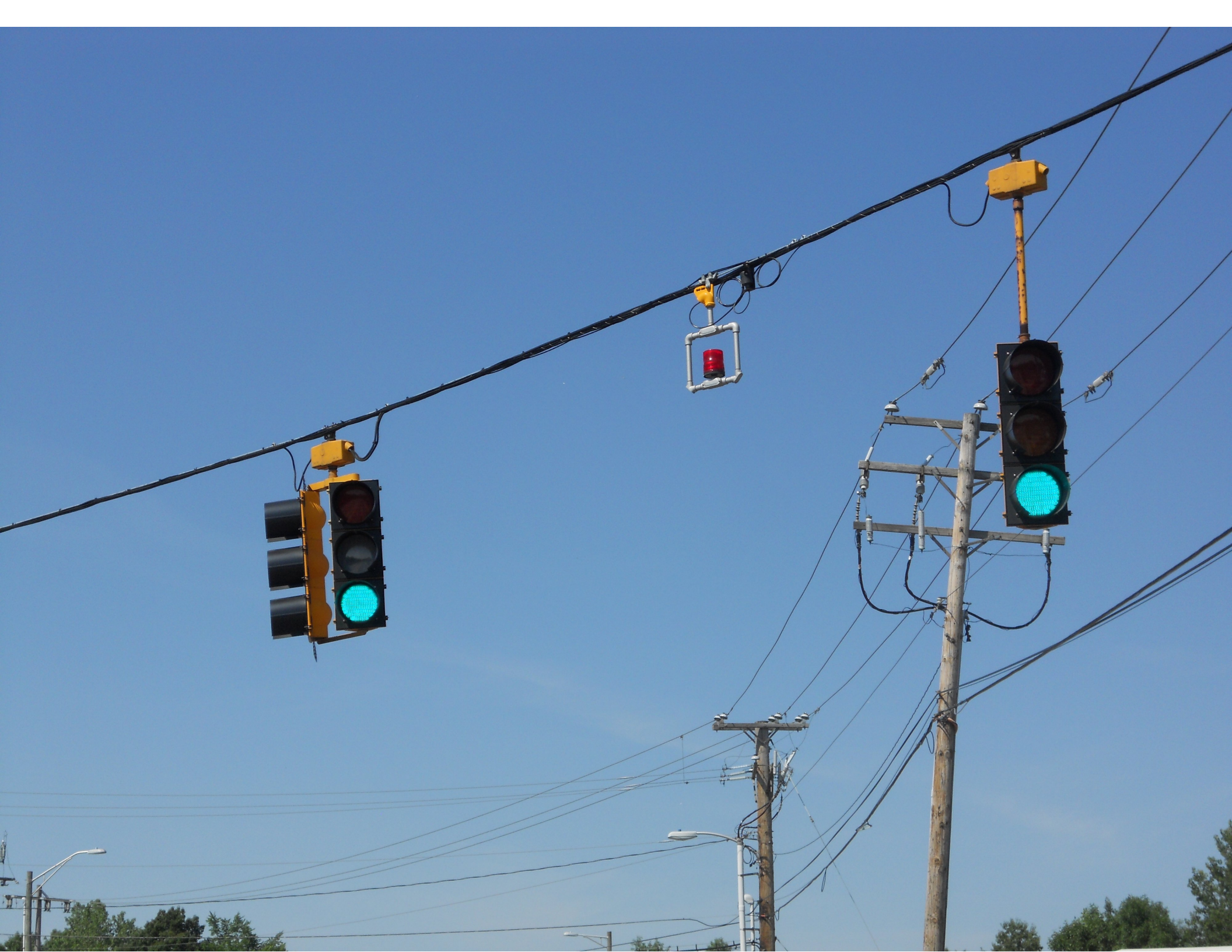
5 miles

30
SPEED LIMIT

BUERGER KING
BROOKLYN NY

COLCHESTER BUSINESS PARK

SO. PARK DR



ROOSEVELT HWY
SO. PARK DR

NORTH
89
BLOCK DRIVES

BURGER KING
DRIVE THRU







250W

14 IN 34
48KS13GA

PROPERTY OF:

VT. AGENCY OF TRANS.
MAINTENANCE DIV.

IN EMERGENCY CALL:

DIST. TRANS. OFFICE

655-1580 COLCHESTER

NIGHTS & WEEKENDS: 878-7111

Date: 08/09/2012

Timing Data:

Phase	1	2	3	4	5	6	7	8	9
Phases in use		x		x		x		x	
Min Green	0	39	0	8	0	39	0	8	0
Walk	0	0	0	0	0	0	0	0	0
Ped Clr	0	0	0	0	0	0	0	0	0
Veh Ext	0	2	0	2	0	2	0	2	0
MAX 1	0	39	0	10	0	39	0	10	0
MAX 2	0	53	0	17	0	53	0	17	0
MAX 3	0	68	0	12	0	68	0	12	0
Yellow	3	4	3	4	3	4	3	4	0
All Red	0	2	0	2	0	2	0	2	0
Recall to Max	0	0	0	0	0	0	0	0	0

Coordination Patterns: ACS3/Naztec Coord. Phases 2 & 6

Pattern 1								
Cycle Length	60	Offset	35	COS	111			
Splits	Ph 1	0	Ph 2	75	Ph 3	0	Ph 4	25
	Ph 5	0	Ph 6	75	Ph 7	0	Ph 8	25
	Ph 9	0	Ph 10	0	Ph 11	0	Ph 12	0
Pattern 2(21)								
Cycle Length	82	Offset	77	COS	211			
Splits	Ph 1	47	Ph 2	71	Ph 3	0	Ph 4	29
	Ph 5	0	Ph 6	71	Ph 7	0	Ph 8	29
	Ph 9	0	Ph 10	0	Ph 11	0	Ph 12	0
Pattern 3(41)								
Cycle Length	92	Offset	31	COS	311			
Splits	Ph 1	38	Ph 2	80	Ph 3	0	Ph 4	20
	Ph 5	0	Ph 6	80	Ph 7	0	Ph 8	20
	Ph 9	0	Ph 10	0	Ph 11	0	Ph 12	0

Day Plan [1]

Event	Action Plan	Step Begins
1	1	0600
2	2	0700
3	1	0900
4	3	1500
5	1	1800
6	5	2200

Action Plan

Action Plan	Pattern
1	1
2	21
3	41
4	254-FREE
5	255-FLASH