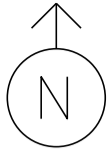


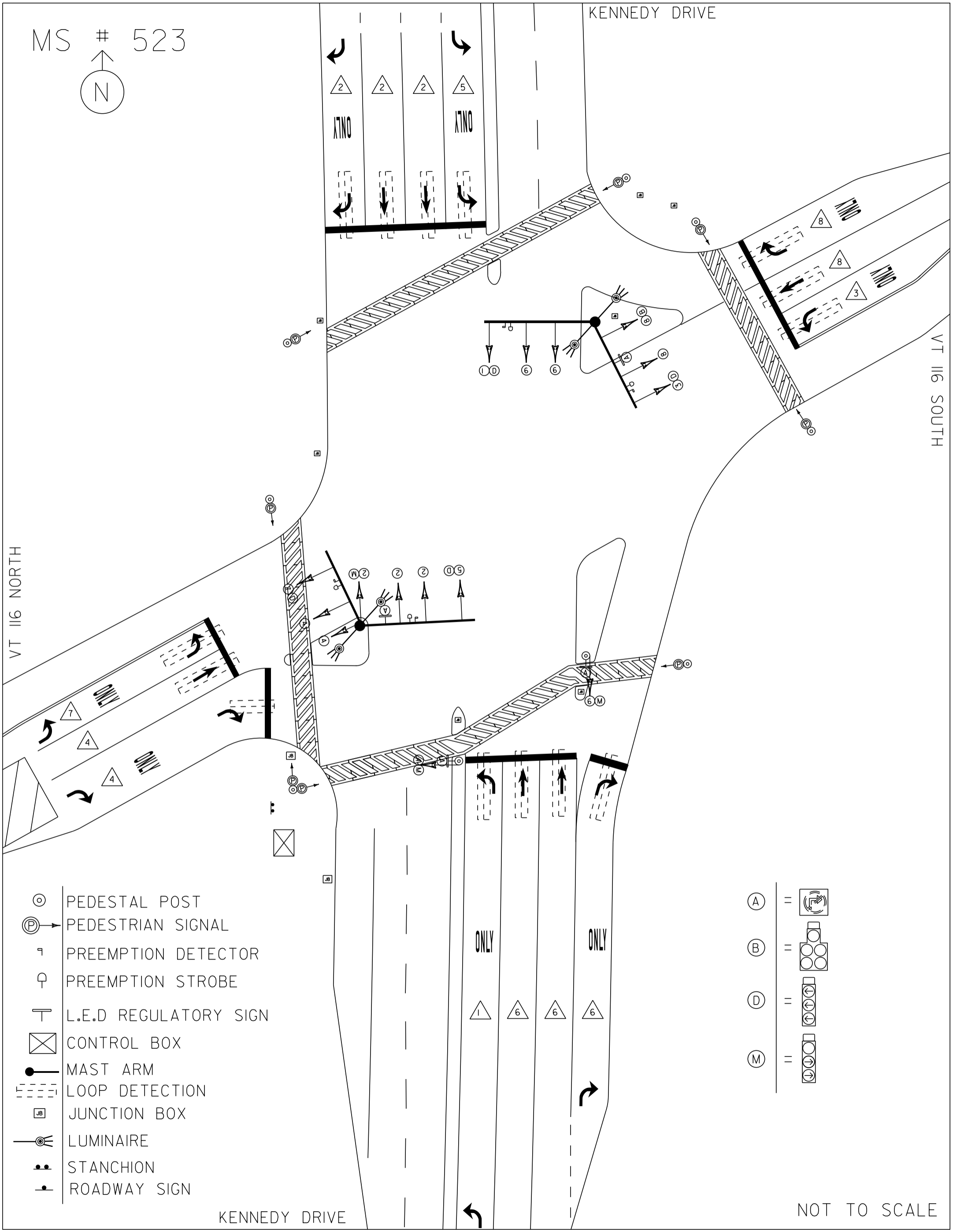
MS # 523



KENNEDY DRIVE

VT 116 SOUTH

VT 116 NORTH



- ⊙ PEDESTAL POST
- Ⓟ PEDESTRIAN SIGNAL
- Ⓡ PREEMPTION DETECTOR
- Ⓢ PREEMPTION STROBE
- Ⓣ L.E.D REGULATORY SIGN
- Ⓧ CONTROL BOX
- MAST ARM
- ⋯ LOOP DETECTION
- Ⓤ JUNCTION BOX
- Ⓛ LUMINAIRE
- Ⓜ STANCHION
- Ⓨ ROADWAY SIGN

- (A) =
- (B) =
- (D) =
- (M) =

KENNEDY DRIVE

NOT TO SCALE