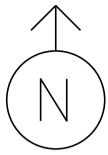


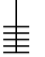
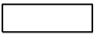
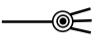







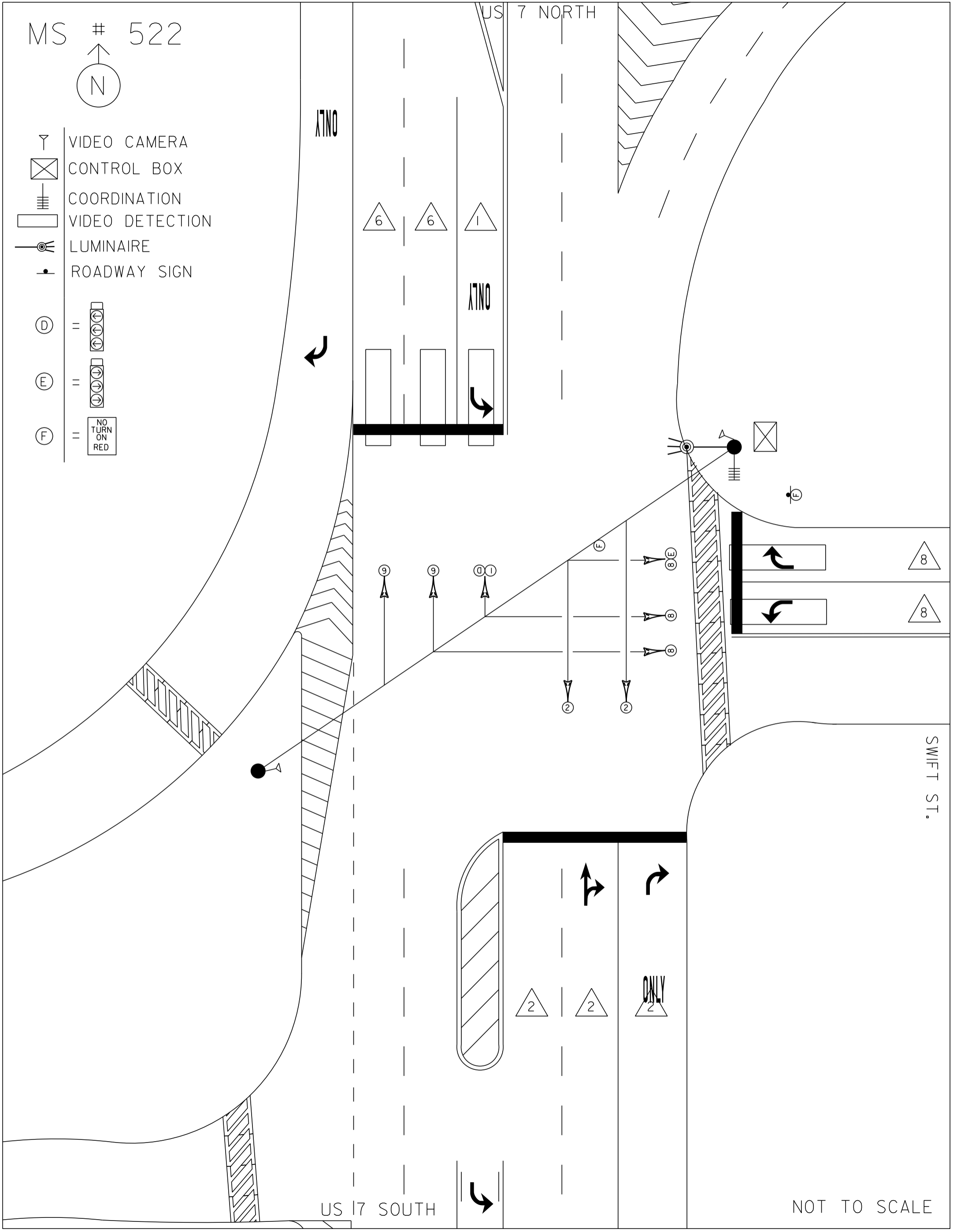


MS # 522

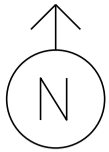


-  VIDEO CAMERA
 -  CONTROL BOX
 -  COORDINATION
 -  VIDEO DETECTION
 -  LUMINAIRE
 -  ROADWAY SIGN
-
-  = 
 -  = 
 -  = 



NOT TO SCALE

MS # 522



US 7 NORTH

ONLY

12'

12'

11'

11'

11'

12'

12'

LANE LINE 175'

ONLY



STOP BAR 35'

STOP BAR 34'

11'

LANE LINE 45'



11'

CROSSWALK 25'

CROSSWALK 86'

16'

SWIFT ST.

STOP BAR 34'

12'

12'

12'

11'

11'

ONLY

11'


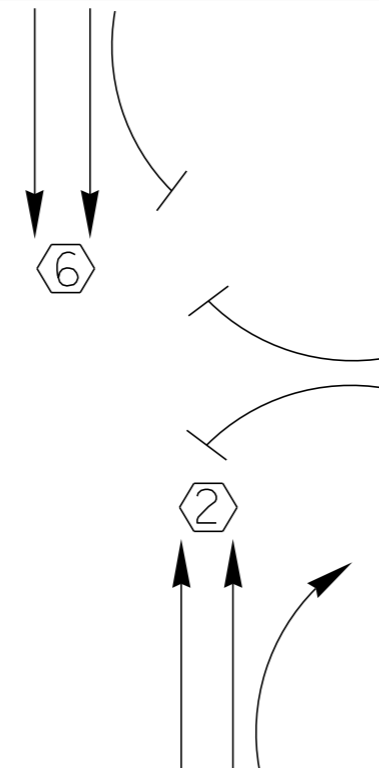
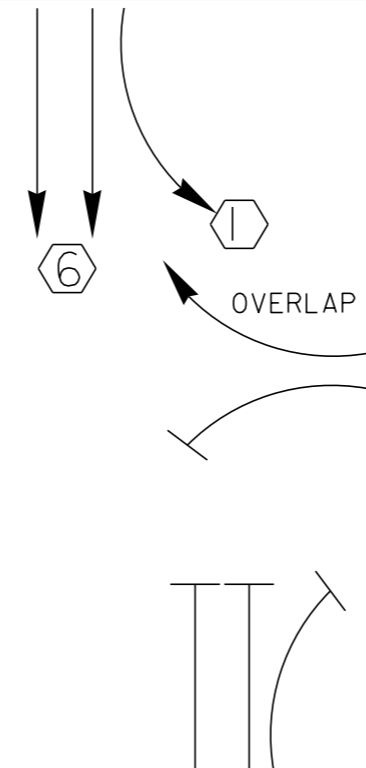
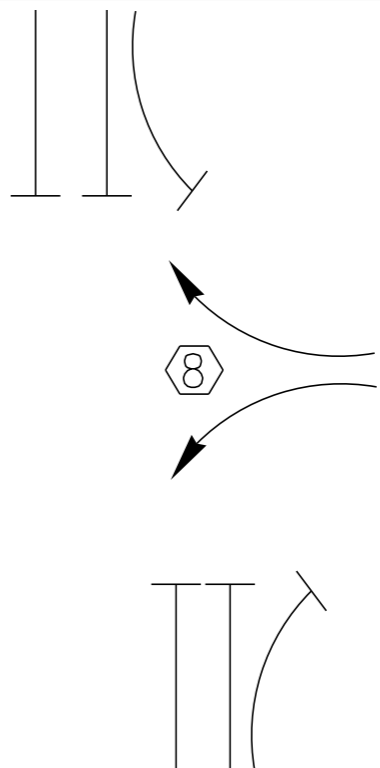
LANE LINE 160'

CROSSWALK 25'

US 17 SOUTH



NOT TO SCALE

<p style="writing-mode: vertical-rl; transform: rotate(180deg);">D I A G R A M</p> 	<p>Ø 1</p> 	<p>Ø 2</p> 	<p>Ø 3</p> 	<p>Ø 4</p>
<p>TIMING</p>	<p>G = Y =</p>	<p>G = Y =</p>	<p>G = Y =</p>	<p>G = Y =</p>
<p style="writing-mode: vertical-rl; transform: rotate(180deg);">D I A G R A M</p>	<p>Ø 5</p>	<p>Ø 6</p>	<p>Ø 7</p>	<p>Ø 8</p>
<p>TIMING</p>	<p>G = Y =</p>	<p>G = Y =</p>	<p>G = Y =</p>	<p>G = Y =</p>



CYCLE LENGTH, C= _____ S



PROPERTY OF
VI AGENCY DE THANG
MAINTAINED BY
BACH HUYEN OAN
2011-2012
MOBILE & WIRELESS RIN 710

PROPERTY OF:
VT. AGENCY OF TRANS.
MAINTENANCE DIV.

IN EMERGENCY CALL:
DIST. TRANS. OFFICE
655-1580

NIGHTS & WEEKENDS: 878-7111

WARNING
IT IS UNSAFE TO OPERATE
THE INTERSECTION SIGNALS WITH
THE CONFLICT MONITOR DISCONNECTED

TRACONEX

VEHICLES

PEDES

PREEMPT

CONTROLLER
On
Off

Auto

Sp
Off

Auto

STO. TIMING

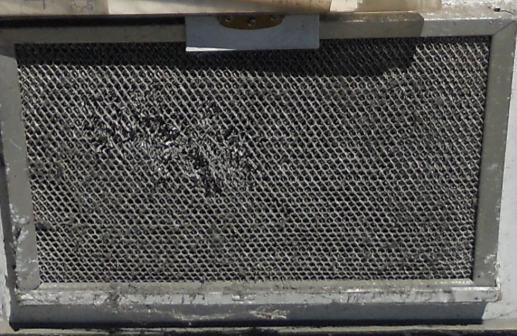
Auto
Off
Man

TRACONEX

CITY OF BURLINGTON

5224

NO.	DATE	TIME	OPERATOR	REMARKS
1	1981			
2				
3				
4				
5				
6				
7				
8				
9				
10				
11				
12				
13				
14				
15				
16				
17				
18				
19				
20				
21				
22				
23				
24				
25				
26				
27				
28				
29				
30				
31				
32				
33				
34				
35				
36				
37				
38				
39				
40				
41				
42				
43				
44				
45				
46				
47				
48				
49				
50				



SERIES 2
LEFT TURN OFF TO SW1
DELAY SELECT
FUSE
1/4 ASS

115V 1A
24V 1A
POWER ON
TRACONEX
RING 1
RING 2
300 TOD CRD PAGE
PHASE INT DATA ENTER
0 1 2 3
4 5 6 7
8 9 A B
C D E F
CONTRAST
1913

235 T

DETECTORS
DR1 B1
DR2 B8 N-1
DR3 B8 N-2
DR4 B8 N-3 DELAY

7 1
8 2
9 3
10 4
11 5
12 6
POWER
24V NO-1
RESET
24V NO-2
CONTRACT
POWER INTERRUPT
7 SEC
POWER-UP
FLASH TIME
ON
EDI
NSM-50L
SERIAL DESIGN

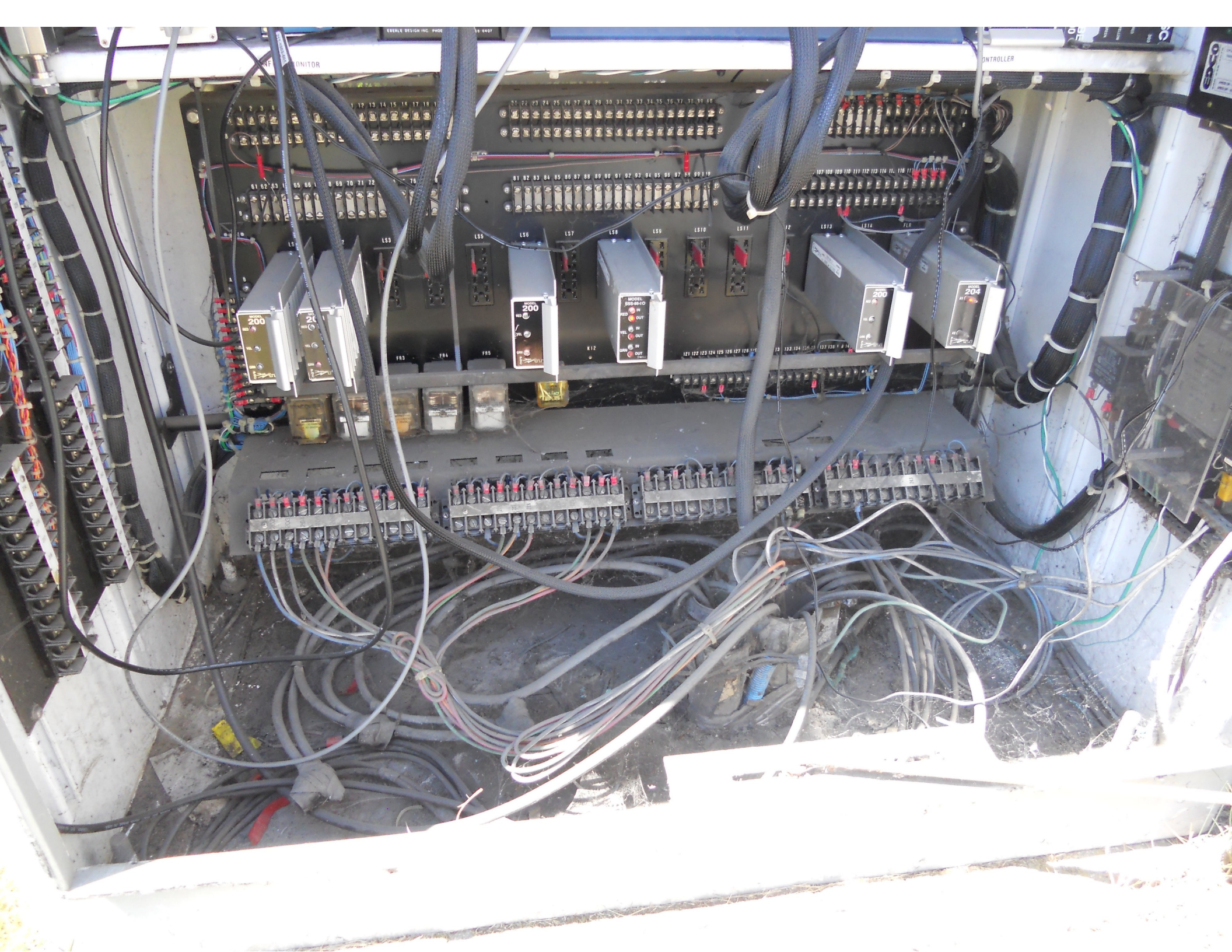
ECONOLITE
CONTROL PRODUCTS, INC.
SC/25-21
PORT 3 PORT 1 PORT 2
SDC TERM
ENTER
1 2 3
4 5 6
7 8 9
0 CLEAR

encom MODEL 5200

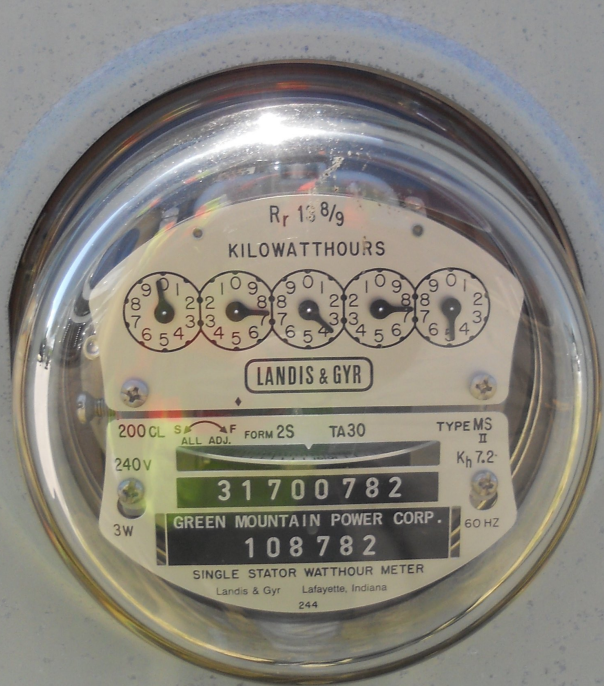
MONITOR

200
200
tsc
CONTROLLER

LS7 LS8 LS9 LS10







R_r 13 8/9

KILOWATTHOURS



LANDIS & GYR

200 CL. S.A. ALL ADJ. FORM 2S TA30 TYPE MS II

240V

K_h 7.2

31700782

GREEN MOUNTAIN POWER CORP.

3W

60 HZ

108782

SINGLE STATOR WATTHOUR METER

Landis & Gyr Lafayette, Indiana

244



SOUTH
7
↓

SOUTH
7
↓

TO
189 89
↗

ONLY
↑





SOUTH
7
SOUTH
7
TO
189 89

ONLY
ONLY

25

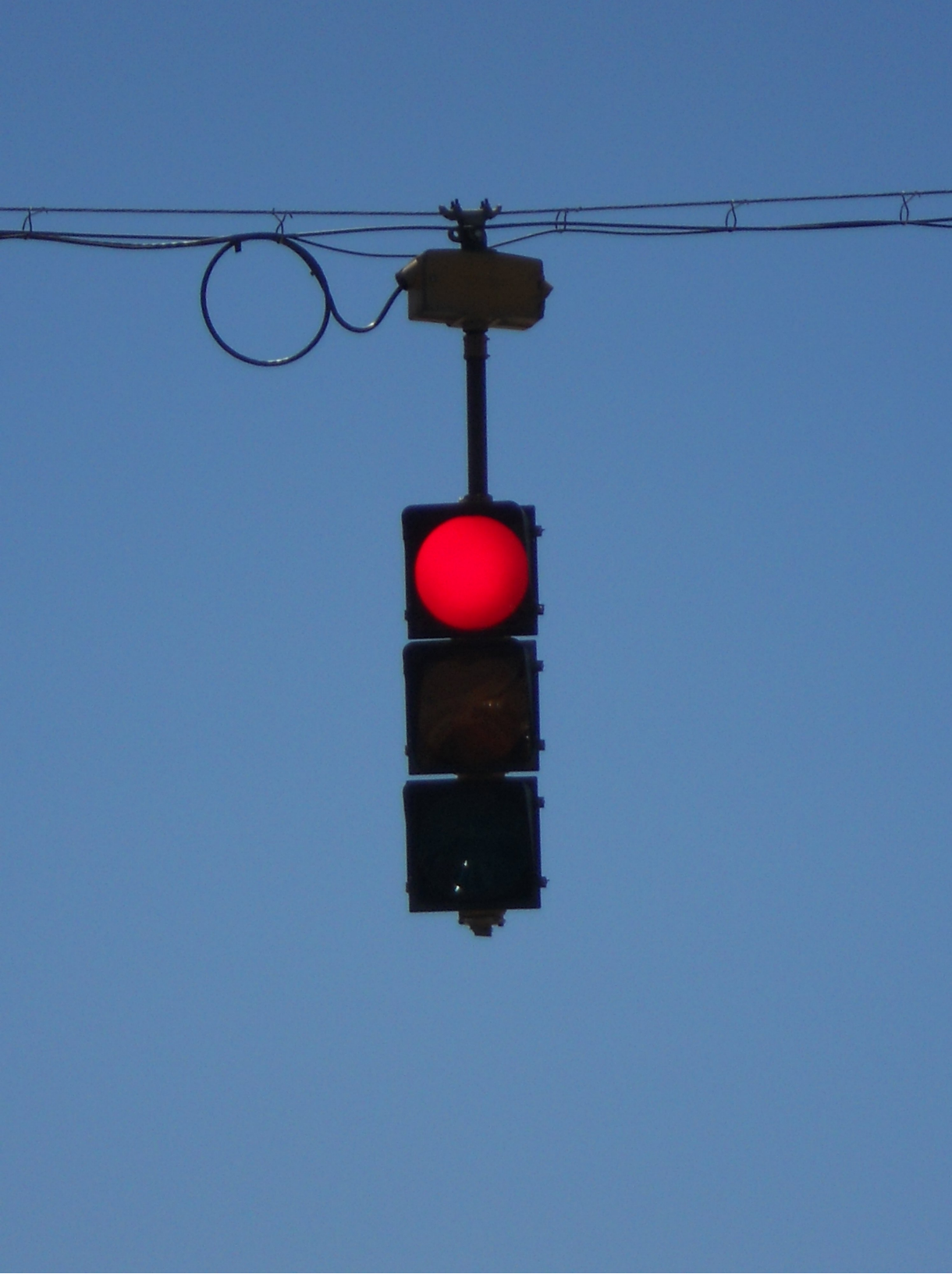
Denny's



















1EH6 829

Vermont
EKC 757

Denny's

NORTH
TRUCK ROUTE
7 NORTH
VIA I-189

TACOMA

TOYOTA

COROLLA



NORTH
7
↓

NORTH
7
↓

INTERSTATE 189 TO INTERSTATE 89
↗ ↗

Airpo

TRUCK ROUTE
7 NORTH
VIA I-189

NORTH
7
↓

NORTH
7
↓



East





Airpor

INTERSTATE 189 TO INTERSTATE 89



TRUCK ROUTE
7 NORTH
VIA I-189





NO
TURN
ON
RED



CHUCK'S





NO
TURN
ON
RED

SWIFT ST

NO
TURN
ON
RED



NO
TURN
ON RED



SWIFT ST

NORTH
7
↓

NORTH
7
↓

Airport
189 TO 89
↗ ↗

TRUCK
7
VIA

Denny's
Diner

HOME

Signature

189

189









POLE #7-9
200W - H.P.S.



Coordination Patterns

```

-----
Pattern 1
Cycle Length . . . 98   COS . . . . . 111
Offset . . . . . 13
Vehicle Permissive . . [1]   0   [2]   0
Vehicle Perm 2 Displacement 0   Phase Reservice. . . NO
Splits:   Phase 1- 23 2- 54 3- 0 4- 0
           Phase 5- 0 6- 77 7- 0 8- 21
           Phase 9- 0 10- 0 11- 0 12- 0   Split Sum: 0
Split Extension/Ring [1]   0   [2]   0
Split Demand Pattern [1]   0   [2]   0
XRT Pattern. . . 0
  Phase Number: 1 2 3 4 5 6 7 8 9 10 11 12
Coord Phases . . . X . . . X . . . . .
Veh Recall . . . . . . . . . . . . . .
Veh Max Recall . . . . . . . . . . . . .
Ped Recall . . . . . . . . . . . . . .
Veh Omit . . . . . . . . . . . . . .
Alt Sequence . . A: . B: . C: . D: . E: . F: .
-----
    
```

```

-----
Pattern 2
Cycle Length . . . 96   COS . . . . . 211
Offset . . . . . 7
Vehicle Permissive . . [1]   0   [2]   0
Vehicle Perm 2 Displacement 0   Phase Reservice. . . NO
Splits:   Phase 1- 20 2- 54 3- 0 4- 0
           Phase 5- 0 6- 74 7- 0 8- 22
           Phase 9- 0 10- 0 11- 0 12- 0   Split Sum: 0
Split Extension/Ring [1]   0   [2]   0
Split Demand Pattern [1]   0   [2]   0
XRT Pattern. . . 0
  Phase Number: 1 2 3 4 5 6 7 8 9 10 11 12
Coord Phases . . . X . . . X . . . . .
Veh Recall . . . . . . . . . . . . . .
Veh Max Recall . . . . . . . . . . . . .
Ped Recall . . . . . . . . . . . . . .
Veh Omit . . . . . . . . . . . . . .
Alt Sequence . . A: . B: . C: . D: . E: . F: .
-----
    
```

```

-----
Pattern 3
Cycle Length . . . 106  COS . . . . . 311
Offset . . . . . 97
Vehicle Permissive . . [1]   0   [2]   0
Vehicle Perm 2 Displacement 0   Phase Reservice. . . NO
Splits:   Phase 1- 19 2- 69 3- 0 4- 0
           Phase 5- 0 6- 88 7- 0 8- 18
           Phase 9- 0 10- 0 11- 0 12- 0   Split Sum: 0
Split Extension/Ring [1]   0   [2]   0
Split Demand Pattern [1]   0   [2]   0
XRT Pattern. . . 0
  Phase Number: 1 2 3 4 5 6 7 8 9 10 11 12
Coord Phases . . . X . . . X . . . . .
Veh Recall . . . . . . . . . . . . . .
Veh Max Recall . . . . . . . . . . . . .
Ped Recall . . . . . . . . . . . . . .
Veh Omit . . . . . . . . . . . . . .
Alt Sequence . . A: . B: . C: . D: . E: . F: .
-----
    
```


NIC Program Steps

Step	Program	Step Begins	Pattern	Override
1	1	0600	1	NO
2	1	0930	2	NO
3	1	1430	3	NO
4	1	1900	2	NO
5	1	0000	0	NO
6	2	0600	2	NO
7	2	0000	0	NO

TOD Program Steps

Step 1 Program 1 Step Begins 0600

Flash. Dimming Enable.
 Red Rest Alt Veh Extension
 Spare 5. Det Log Enable.
 Spare 3. Spare 4
 Type 0 Dly Enable. . . Spare 2
 Det Diag Plan. . . . 0

	Phase Number											
	1	2	3	4	5	6	7	8	9	10	11	12
Max 2 Enable
Max 3 Enable
Veh Recall
Veh Max Recall
Ped Recall
Cond Service Inhibit.
Phase Omit
Special Function

	A	B	C	D	E	F
Alt Sequence

Step 2 Program 1 Step Begins 0930

Flash. Dimming Enable.
 Red Rest Alt Veh Extension
 Spare 5. Det Log Enable.
 Spare 3. Spare 4
 Type 0 Dly Enable. . . Spare 2
 Det Diag Plan. . . . 0

	Phase Number											
	1	2	3	4	5	6	7	8	9	10	11	12
Max 2 Enable	X	X	X	X	X	X	X	X
Max 3 Enable
Veh Recall
Veh Max Recall
Ped Recall
Cond Service Inhibit.
Phase Omit
Special Function

	A	B	C	D	E	F
Alt Sequence

TOD Program Steps

 Step 3 Program 1 Step Begins 1430

Flash. Dimming Enable.
 Red Rest Alt Veh Extension
 Spare 5. Det Log Enable.
 Spare 3. Spare 4
 Type 0 Dly Enable. . . Spare 2
 Det Diag Plan. . . . 0

	Phase Number											
	1	2	3	4	5	6	7	8	9	10	11	12
Max 2 Enable
Max 3 Enable	X	X	X	X	X	X	X	X
Veh Recall
Veh Max Recall
Ped Recall
Cond Service Inhibit.
Phase Omit
Special Function

Alt Sequence A B C D E F

Step 4 Program 1 Step Begins 1900

Flash. Dimming Enable.
 Red Rest Alt Veh Extension
 Spare 5. Det Log Enable.
 Spare 3. Spare 4
 Type 0 Dly Enable. . . Spare 2
 Det Diag Plan. . . . 0

	Phase Number											
	1	2	3	4	5	6	7	8	9	10	11	12
Max 2 Enable	X	X	X	X	X	X	X	X
Max 3 Enable
Veh Recall
Veh Max Recall
Ped Recall
Cond Service Inhibit.
Phase Omit
Special Function

Alt Sequence A B C D E F

TOD Program Steps

 Step 5 Program 1 Step Begins 0000

Flash. Dimming Enable.
 Red Rest Alt Veh Extension
 Spare 5. Det Log Enable.
 Spare 3. Spare 4
 Type 0 Dly Enable. . . Spare 2
 Det Diag Plan. . . . 0

	Phase Number											
	1	2	3	4	5	6	7	8	9	10	11	12
Max 2 Enable
Max 3 Enable
Veh Recall
Veh Max Recall
Ped Recall
Cond Service Inhibit.
Phase Omit
Special Function

Alt Sequence A B C D E F

Step 6 Program 2 Step Begins 0600

Flash. Dimming Enable.
 Red Rest Alt Veh Extension
 Spare 5. Det Log Enable.
 Spare 3. Spare 4
 Type 0 Dly Enable. . . Spare 2
 Det Diag Plan. . . . 0

	Phase Number											
	1	2	3	4	5	6	7	8	9	10	11	12
Max 2 Enable	X	X	X	X	X	X	X	X
Max 3 Enable
Veh Recall
Veh Max Recall
Ped Recall
Cond Service Inhibit.
Phase Omit
Special Function

Alt Sequence A B C D E F

TOD Program Steps

Step 7 Program 2 Step Begins 0000

Flash. Dimming Enable.
 Red Rest Alt Veh Extension
 Spare 5. Det Log Enable.
 Spare 3. Spare 4
 Type 0 Dly Enable. . . Spare 2
 Det Diag Plan. . . . 0

	Phase Number											
	1	2	3	4	5	6	7	8	9	10	11	12
Max 2 Enable
Max 3 Enable
Veh Recall
Veh Max Recall
Ped Recall
Cond Service Inhibit.
Phase Omit
Special Function

	A	B	C	D	E	F
Alt Sequence
