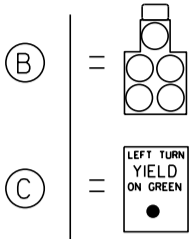
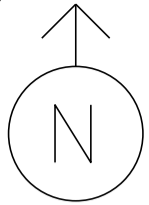


MS # 518

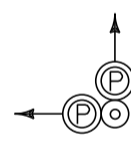
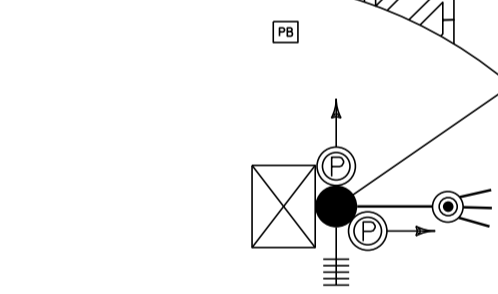
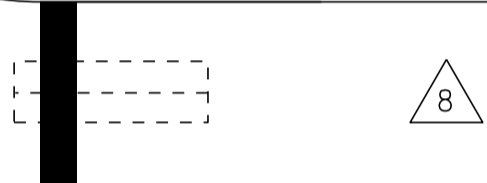
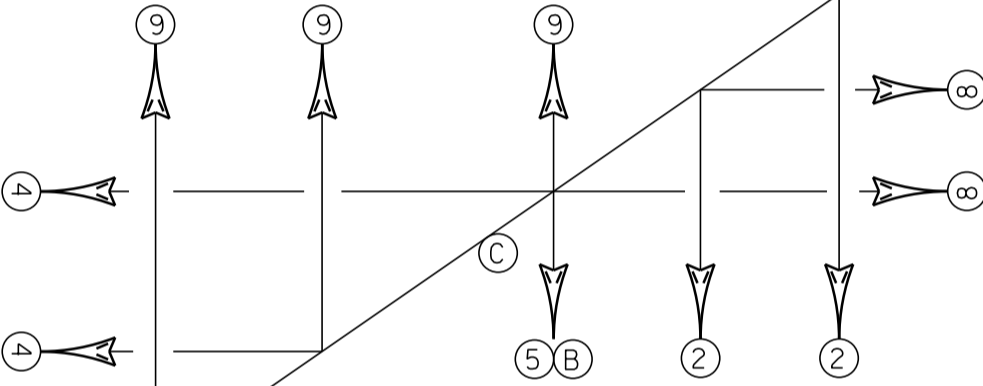
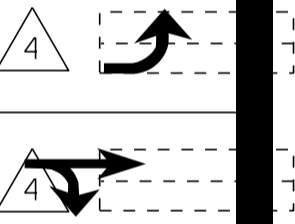
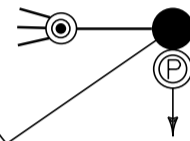
US 7 NORTH



ONLY

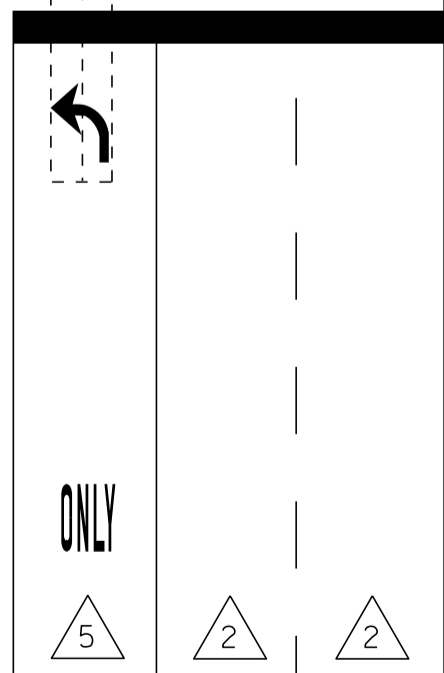


FAYETTE DR



MCINTOSH AVE

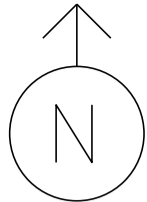
- PEDESTAL POST
- PEDESTRIAN SIGNAL
- CONTROL BOX
- COORDINATION
- LOOP DETECTION
- PULL BOX
- LUMINAIRE



US 7 SOUTH

NOT TO SCALE

MS # 518



US 7 NORTH

FAYETTE DR

12' 11' 11' 11' 11' 11'

ONLY ONLY

LANE LINE 170' LANE LINE 95'



STOP BAR 56'

17'

STOP BAR 16'

16'



LANE LINE 75'

CROSSWALK 80'

CROSSWALK 35'

13'



STOP BAR 23'

CROSSWALK 78'

MCINTOSH AVE

STOP BAR 33'



ONLY

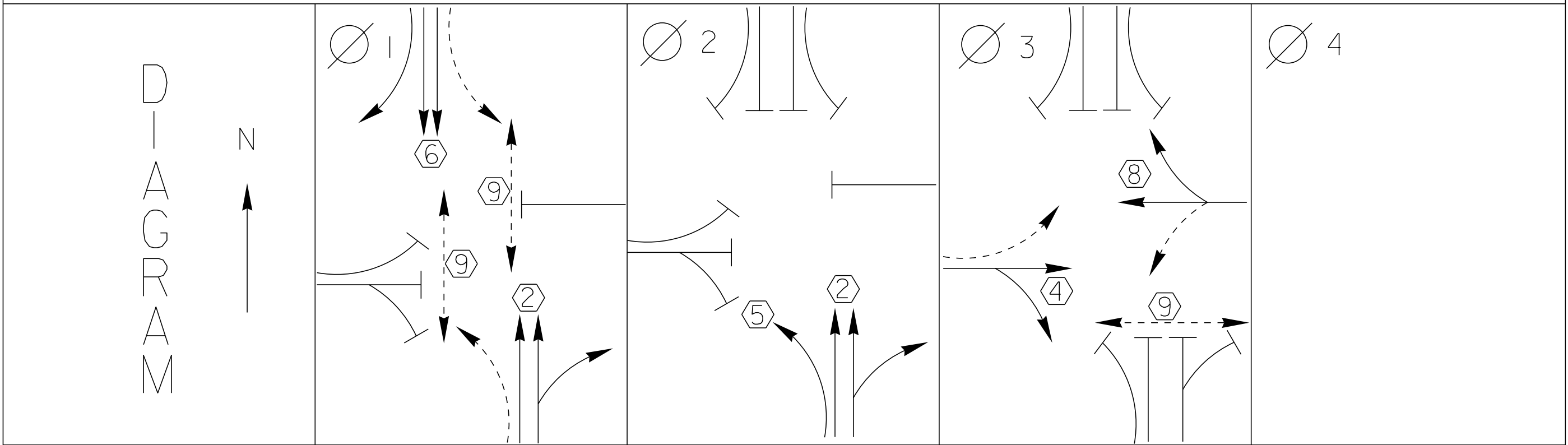
LANE LINE 140'

11' 11' 11' 11' 11'

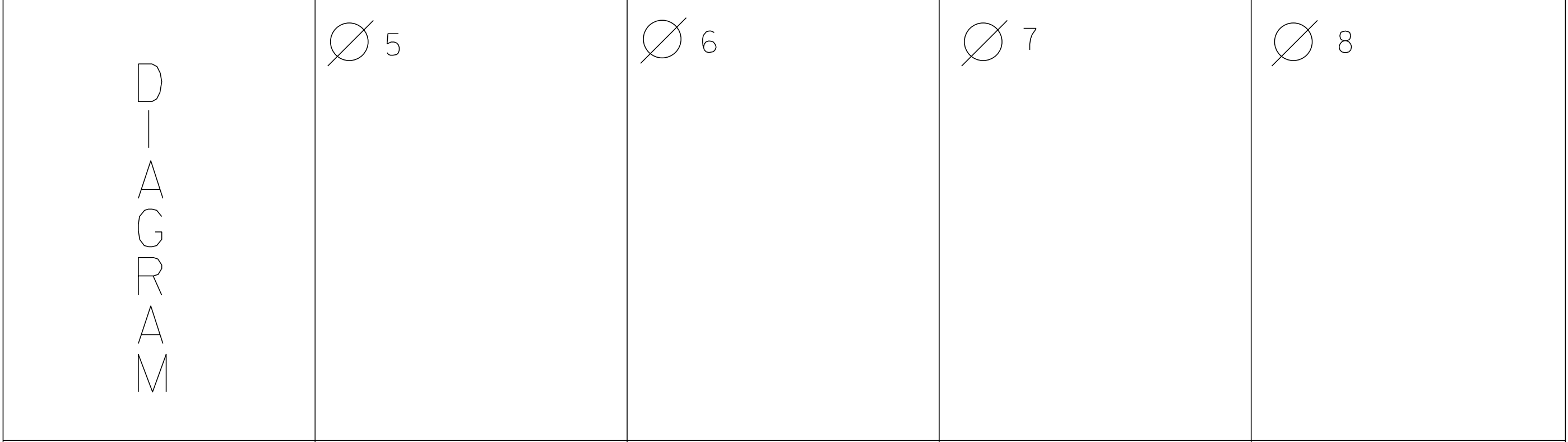


US 7 SOUTH

NOT TO SCALE



TIMING	$G =$ $Y =$	$G =$ $Y =$	$G =$ $Y =$	$G =$ $Y =$
--------	----------------	----------------	----------------	----------------



TIMING	$G =$ $Y =$	$G =$ $Y =$	$G =$ $Y =$	$G =$ $Y =$
--------	----------------	----------------	----------------	----------------

 PROTECTED TURNS	 PERMITTED TURNS PEDESTRIAN	CYCLE LENGTH, C= _____ S
------------------------	--------------------------------------	--------------------------

PROPERTY OF  
VT. AGENCY OF TRANS.  
MAINTENANCE DIV.  
• IN EMERGENCY CALL:  
DIST. TRANS. OFFICE  
655-1680 COLCHESTER  
NIGHTS & WEEKENDS: 878-7111



PROPERTY OF:  
VT. AGENCY OF TRANS.  
MAINTENANCE DIV.

IN EMERGENCY CALL:  
DIST. TRANS. OFFICE  
655-1580 COLCHESTER  
NIGHTS & WEEKENDS: 878-7111

**WARNING**

DO NOT OPERATE  
CABINET WITHOUT  
CONFLICT MONITOR UNIT

**DANGER**

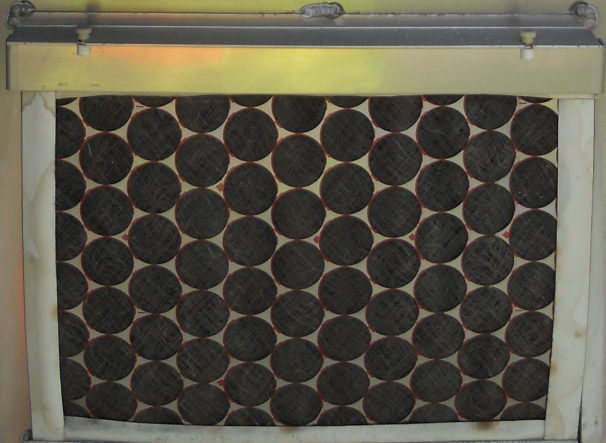
115 VOLTS A.C.

**WARNING**

DO NOT OPERATE  
CABINET WITHOUT  
CONFLICT MONITOR UNIT

**DANGER**

115 VOLTS A.C.





SERIES 2  
EAST  
ON/OFF MODE  
STOP  
LAMP  
PAUSE  
1-4 ADD

SERIES 2  
EAST MIGHT  
ON/OFF MODE  
STOP  
LAMP  
PAUSE  
1-4 ADD

SERIES 2  
EAST RIGHT  
ON/OFF MODE  
STOP  
LAMP  
PAUSE  
1-4 ADD

TELEMETRY TLM-9  
PORT 3B  
RX  
VALID  
TX

Model 5200  
Wireless Modem  
EITCO

WEST  
MODEL 200  
RED  
TEL  
GEN  
1-4 ADD

WEST  
LAMP  
PAUSE  
1-4 ADD

RECONOLITE  
DATA  
ETH

ECONOLITE

STATUS

ASC/3-2100

Navigation and function buttons:

- MAIN MENU
- SUB MENU
- NEXT DATA
- NEXT SCREEN
- ENTER
- HELP
- STATUS DISPLAY
- NEXT PAGE

Keypad:

1	2	3
4	5	6
7	8	9
0	CLEAR	

Character mappings: abc, def, ghi, jkl, mno, pqrs, tuv, wxyz, copy, toggle, alt

115 VAC  
1 AMP

SLO-BLO

DC

RESET AFTER MODIFYING SWITCHES

FAULT MONITOR FAIL

RESET POWER MODE

INC PREV FAIL

842 TAB

GT ENBLE NO ENBLE VM LATCH

ABODEF

1 2 3 4 5 6

SSM 1 2 3 4 5 6

ENBLE

SSM 7 8 9 10 11 12

ENBLE

7 8 9 10 11 12

ECONOLITE  
CONTROL PRODUCTS, INC.  
MANUFACTURED 1992

1 AMP

McIntosh Ave  
Controller Data

MODEL 200

MODEL 200

200

MODEL 204

RED

RED

RED

YEL

YEL

YEL

GRN

GRN

GRN

RED

YEL

GRN



SERIES 2  
WEST  
OPER. MODE  
LONG PAUSE  
SYSTEM

SERIES 2  
WEST  
OPER. MODE  
LONG PAUSE  
SYSTEM

SERIES 2  
WEST  
OPER. MODE  
LONG PAUSE  
SYSTEM

TELEMETRY TLM 9  
PORT 3B

WEST  
OPER. MODE  
LONG PAUSE  
SYSTEM

ECONOLITE  
CONTROL PRODUCTS  
70.5  
115 VAC  
1 AMP

A PHASE  
PORT 1  
PORT 2  
PORT 3

SERIAL NO.  
742469

Controller Data A

ECONOLITE

STATUS

ASC/3-2100

PORT 3A

TERMINAL

PORT 2

PORT 1

D

1 2 3  
4 5 6  
7 8 9  
0  
ENTER

115 VAC  
1 AMP

RESET AFTER MODIFYING SWITCHES

FAULT MONITOR FAIL

70.5

IN FLOW - FLOW SEL. OFF LOG. IN FLOW

ON PROBLEM MONITOR IN FLOW

4 4 3 1 A B A B C C E E F

CV ENABLE J CV LOG DISABLE

WD ENABLE WND PICKABLE

VA LANDS VAIK DISABLE

1 2 3 4 5 6

SW 1 2 3 4 5 6

ENABLE

7 8 9 10 11 12

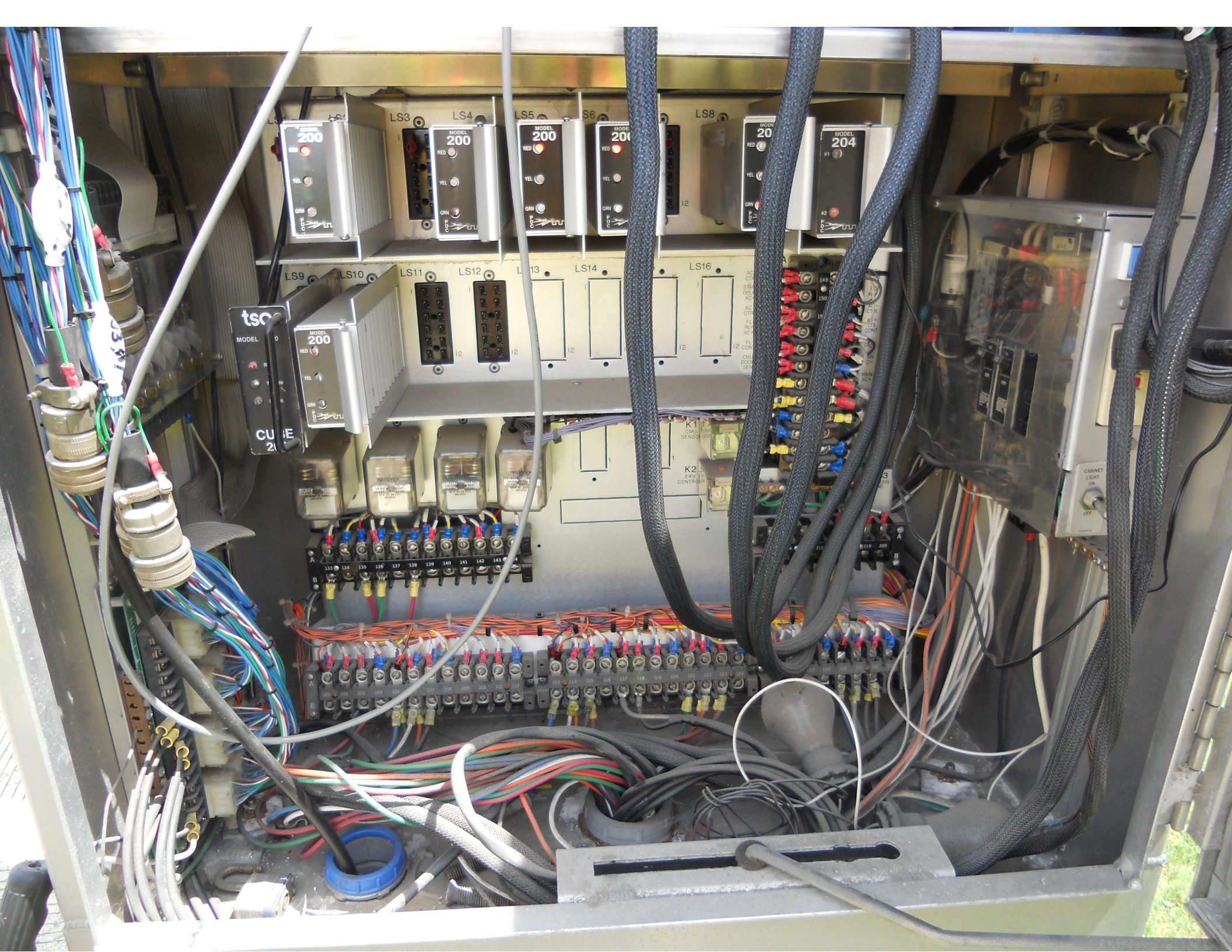
ECONOLITE

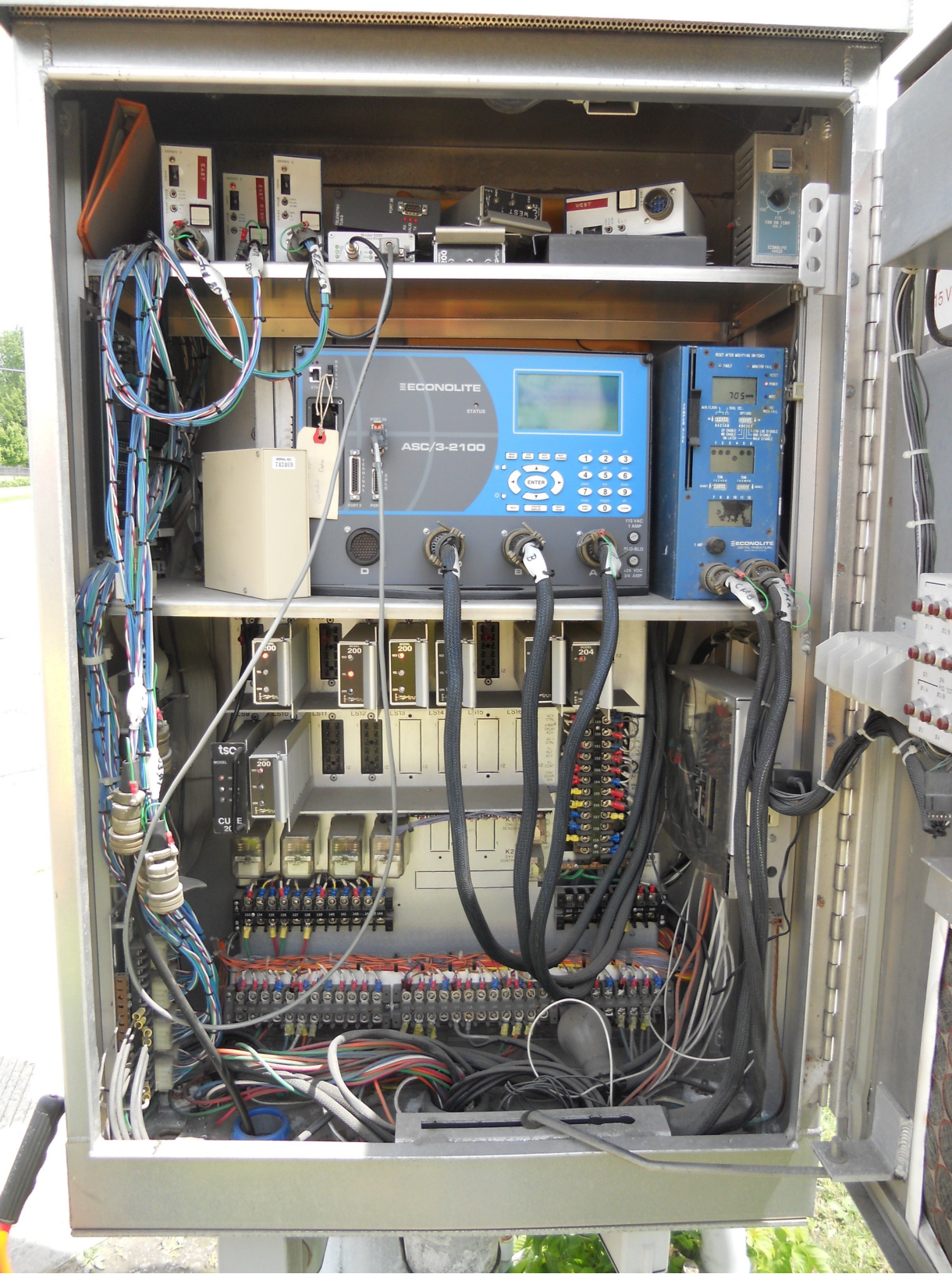
CONTROL PRODUCTS

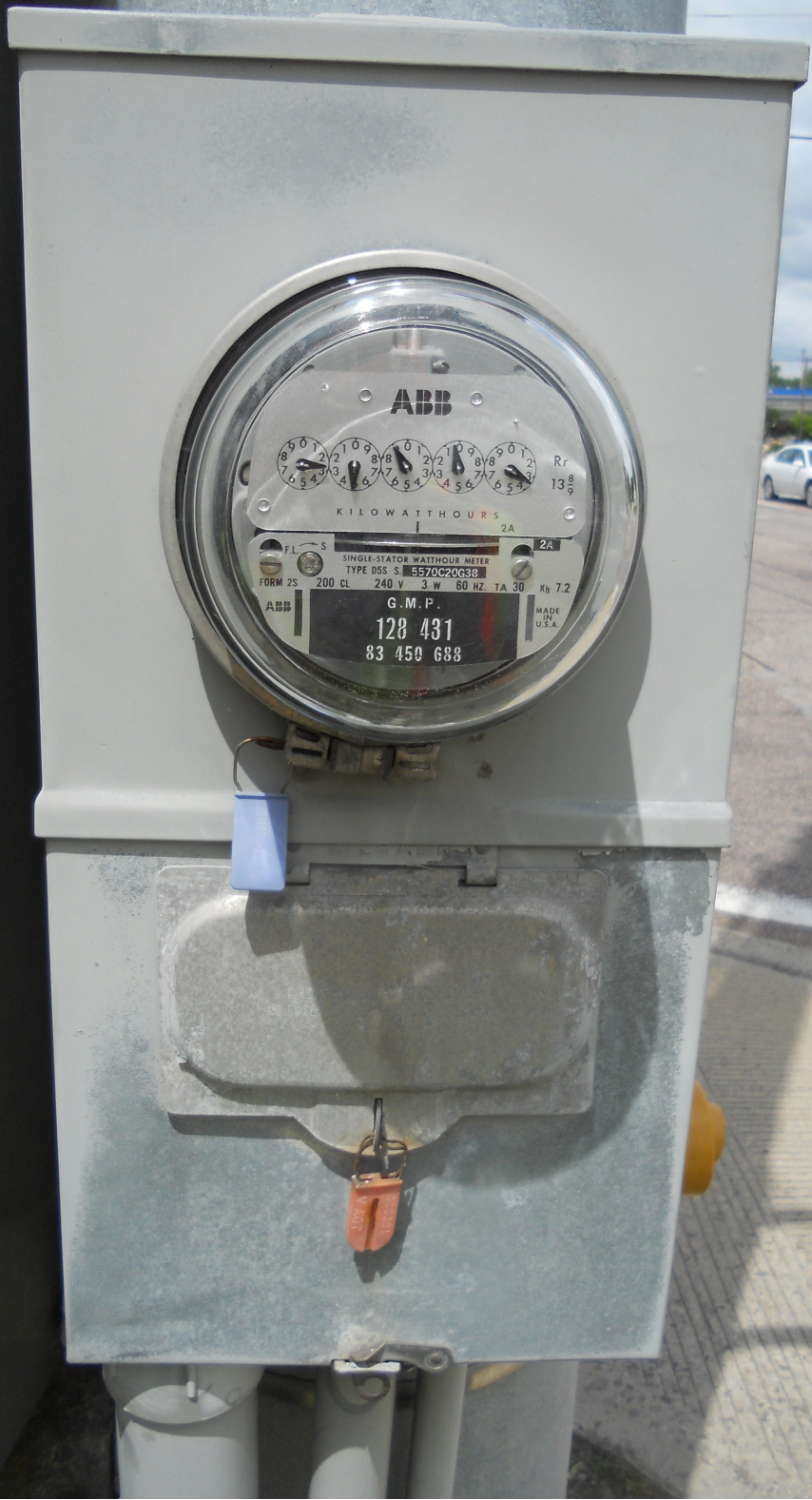
1 AMP

CMS

MODEL 200







**ABB**



KILOWATTHOURS

2A  
SINGLE-STATOR WATT-HOUR METER  
TYPE DES. S. 570C20630

FORM 2S 200 CL 240 V 3 W 60 HZ TA 30 Kh 7.2  
G.M.P.  
128 431  
83 450 688  
MADE IN U.S.A.



RESTAURANT  
CATERING  
EVENTS





LEFT TURN  
YIELD  
ON GREEN







DON  
WALK

WAL

PUSH  
BUTTON  
FOR  
WALK  
→  
SIGNAL

PUSH  
BUTTON  
FOR  
WALK  
←  
SIGNAL

SPIDER  
TED - WA  
KATY PE  
MAGIC  
VAMPIRE  
MADAG  
BRAVE-S









Willey

SBC



















McINTOSH AV

SHELBURNE RD

SB NORTHFIELD SAVINGS BANK

NORTHFIELD SAVINGS BANK





rise  
rentals.com

ONLY ↑ ↑ ONLY



McDonald's





Ho-Hum  
MOTEL

Benjamin  
Moore





FAYETTE DR



FAYETTE DR

DON  
WALK

WALK









PALACE 9

SPIDERMAN  
TED - MADEA  
KATY PERRY  
MIKE  
RE HUNTER  
GASCAR 3  
SAFETY

PUSH  
BUTTON  
FOR  
WALK  
←  
SIGNAL

PUSH  
BUTTON  
FOR  
WALK  
←  
SIGNAL





A close-up photograph of a metal base plate, likely made of cast iron or steel, which is bolted to a concrete foundation. Two large hexagonal bolts are visible, one on the left and one on the right, both showing signs of rust and wear. The base plate is stamped with the identification number "12-75-32" on the top line and "48KS 10GA" on the bottom line. The concrete foundation below shows some surface cracking and discoloration.

12-75-32  
48KS 10GA

Date: 08/09/2012

Timing Data:

Phase	1	2	3	4	5	6	7	8	9
Phases in use		x		x		x		x	
Min Green	0	25	0	5	5	25	0	5	0
Walk	0	5	0	5	0	5	0	5	0
Ped Clr	0	20	0	21	0	20	0	21	0
Veh Ext	1.5	1.5	0	1.5	1.5	1.5	0	1.5	0
MAX 1	0	64	0	22	6	52	0	18	0
MAX 2	0	63	0	21	9	48	0	16	0
MAX 3	0	71	0	24	10	54	0	19	0
Yellow	0	4	0	4	4	4	0	4	3
All Red	2	2	0	2	2	2	0	2	0
Recall to Max	0	0	0	0	0	0	0	0	0

Coordination Patterns: ACS3/Naztec

Pattern 1									
Cycle Length	98	Offset	88	COS	0				
Splits	Ph 1	0	Ph 2	71	Ph 3	0	Ph 4	29	
	Ph 5	12	Ph 6	59	Ph 7	0	Ph 8	29	
	Ph 9	0	Ph 10	0	Ph 11	0	Ph 12	0	
Pattern 2(21)									
Cycle Length	96	Offset	24	COS	0				
Splits	Ph 1	0	Ph 2	72	Ph 3	0	Ph 4	28	
	Ph 5	16	Ph 6	56	Ph 7	0	Ph 8	28	
	Ph 9	0	Ph 10	0	Ph 11	0	Ph 12	0	
Pattern 3									
Cycle Length	106	Offset	78	COS	0				
Splits	Ph 1	0	Ph 2	72	Ph 3	0	Ph 4	28	
	Ph 5	15	Ph 6	57	Ph 7	0	Ph 8	28	
	Ph 9	0	Ph 10	0	Ph 11	0	Ph 12	0	
Pattern 4									
Cycle Length	90	Offset	0	COS	0				
Splits	Ph 1	0	Ph 2	74	Ph 3	0	Ph 4	26	
	Ph 5	23	Ph 6	51	Ph 7	0	Ph 8	26	
	Ph 9	0	Ph 10	0	Ph 11	0	Ph 12	0	

Action Plan

Action Plan	Pattern
1	1
2	2
3	3
4	2
5	FREE

Day Plan [1]

Event	Action Plan	Step Begins
1	1	0600
2	2	0930
3	3	1430
4	2	1900
5	4	0000