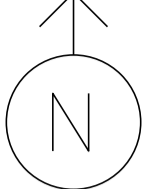


MS # 516



US-7 NORTH

BARLETT'S BAY ROAD

2 2 5

ONLY

STOP BUS

JB



T

S

1 D

6

6

P

PB PB

P

8

8

4

4



T

P

PB PB

2

2

5 D

1

4

4

P

PB PB

8

8



4

4

GREEN MNT. DR.

- ⊙ PEDESTAL POST
- Ⓟ PEDESTRIAN SIGNAL
- ⌚ PREEMPTION DETECTOR
- ⚡ PREEMPTION STROBE
- T L.E.D REGULATORY SIGN
- ⊠ CONTROL BOX
- MAST ARM
- - - LOOP DETECTION
- JB JUNCTION BOX
- PB PULL BOX
- ☉ LUMINAIRE
- ⋮ STANCHION
- ⌚ ROADWAY SIGN

- (A) =
- (D) =
- (S) =
- (T) =

US-7 SOUTH

ONLY

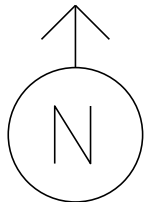
1

6

6

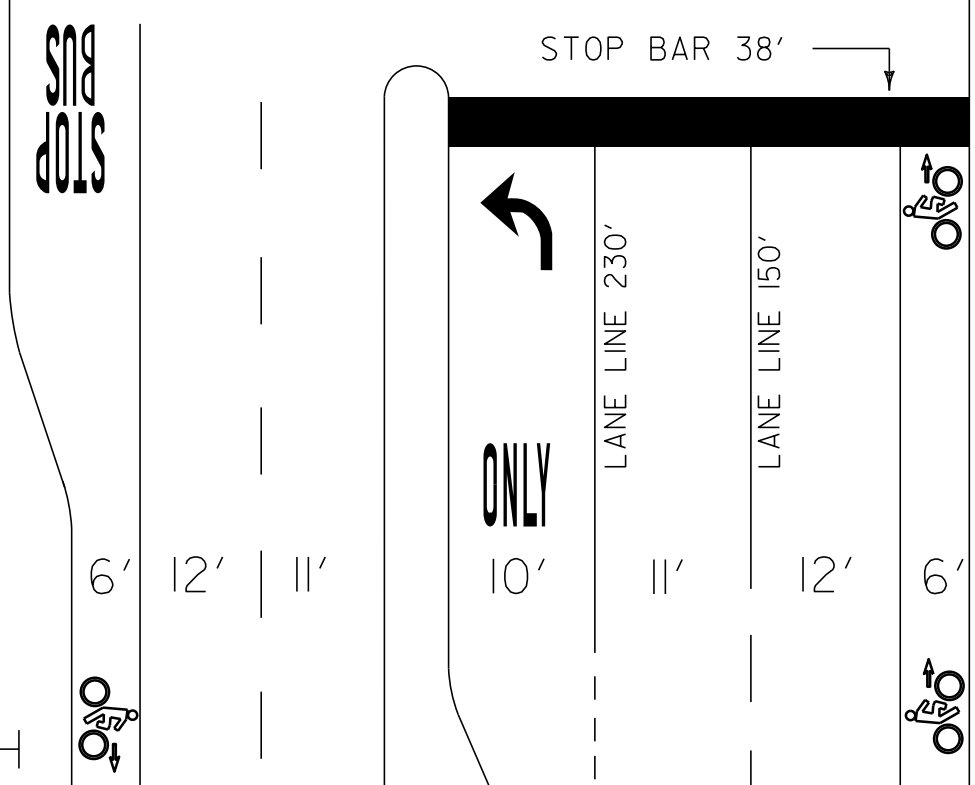
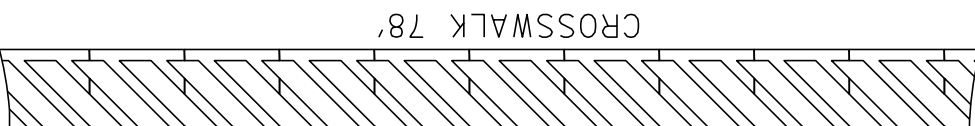
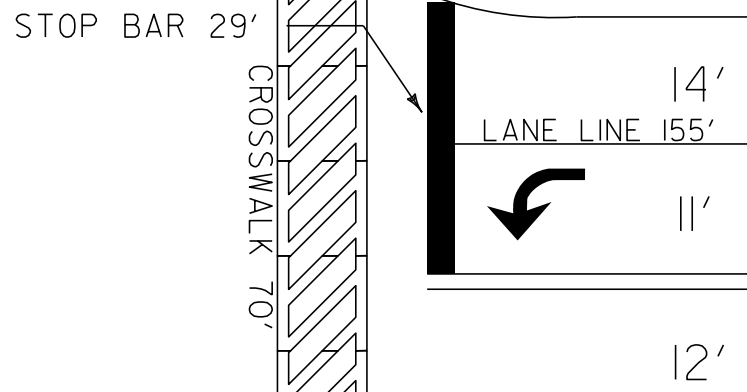
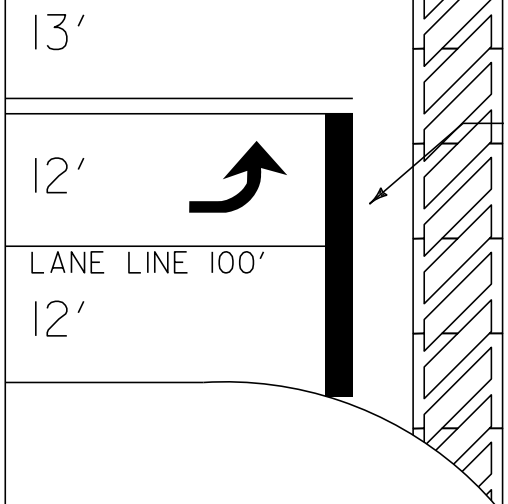
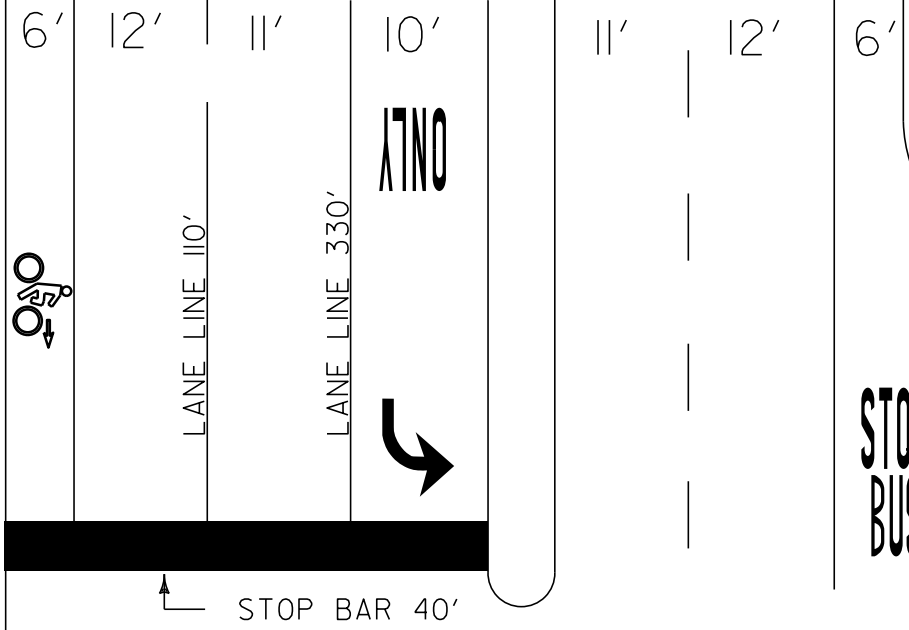
NOT TO SCALE

MS # 516



US-7 NORTH

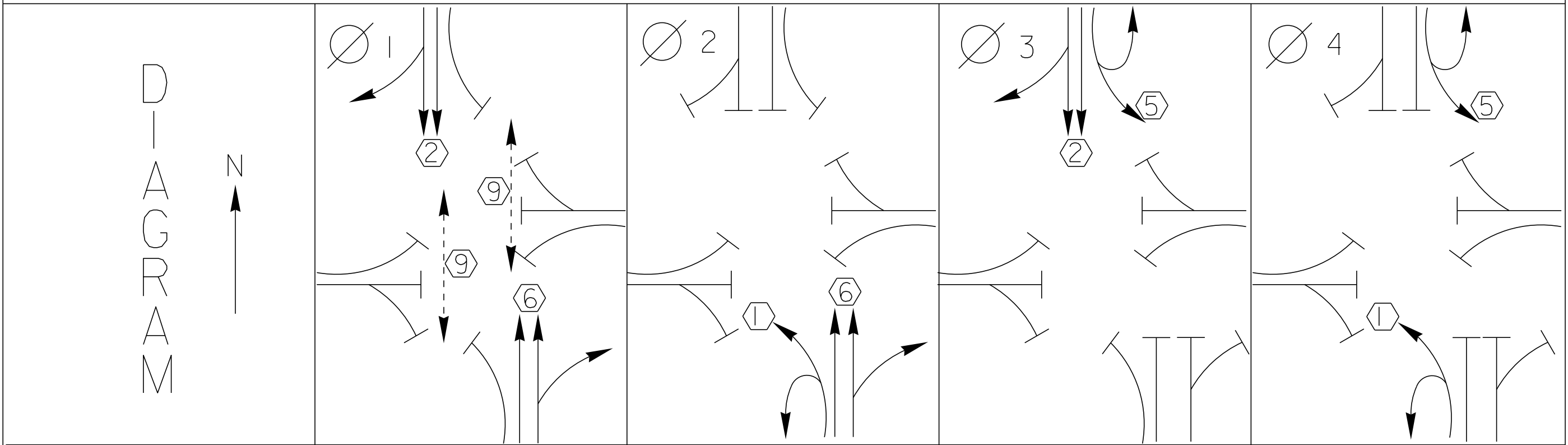
BARLETT'S BAY ROAD



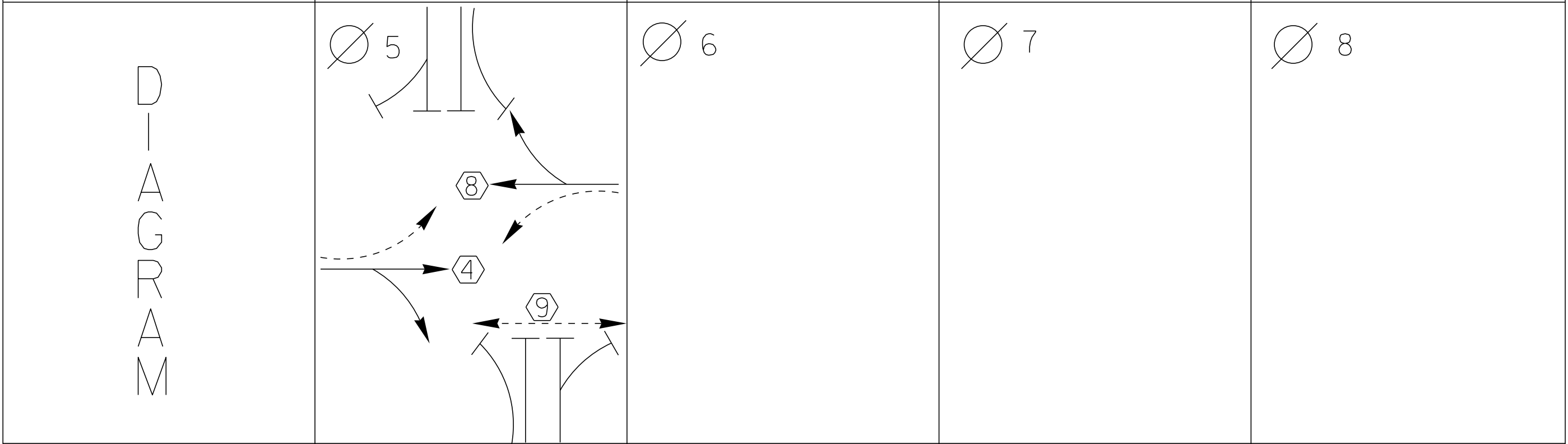
US-7 SOUTH

GREEN MNT. DR.

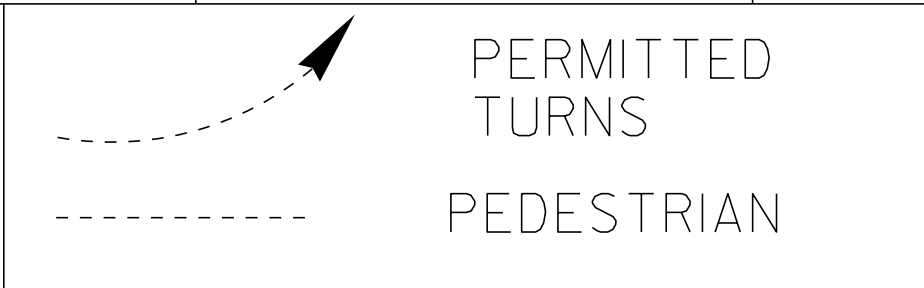
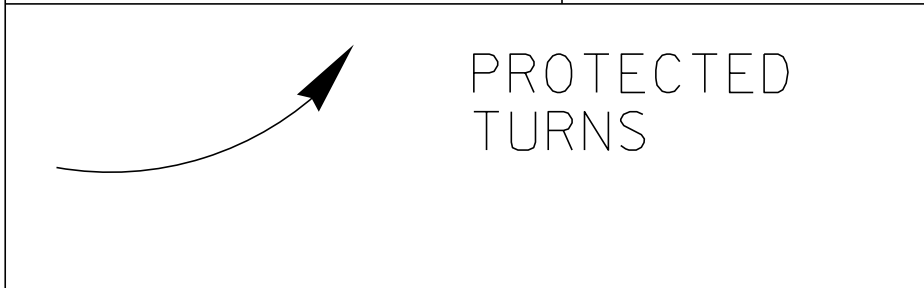
NOT TO SCALE



TIMING	G = Y =	G = Y =	G = Y =	G = Y =
--------	------------	------------	------------	------------



TIMING	G = Y =	G = Y =	G = Y =	G = Y =
--------	------------	------------	------------	------------



CYCLE LENGTH, C = _____ S



PROPERTY OF
VT. AGENCY OF TRANSPORTATION
MAINTENANCE DIV.
95 RIMMINGTON RD.
WINDY HOLLOW, VT 05648
802-248-3333
WWW.VT.GOV

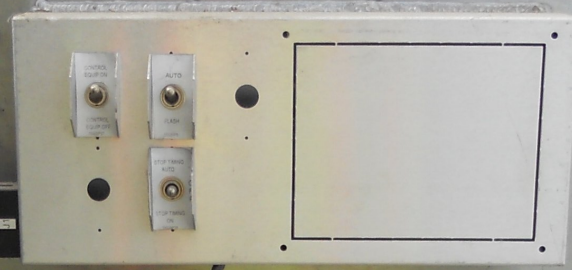
PROPERTY OF :
VT. AGENCY OF TRANS.
MAINTENANCE DIV.

IN EMERGENCY CALL :
DIST. TRANS. OFFICE
655-1580 COLCHESTER
NIGHTS & WEEKENDS : 878-7111
INTERSECTION NO. MS-516

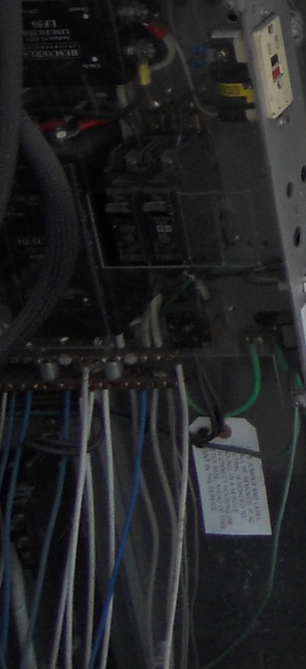
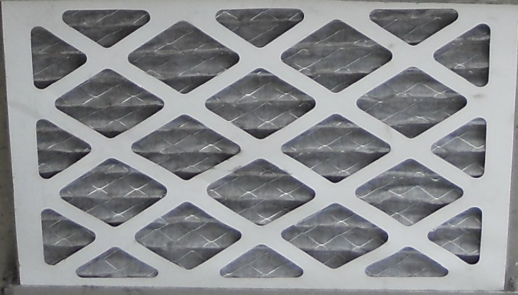
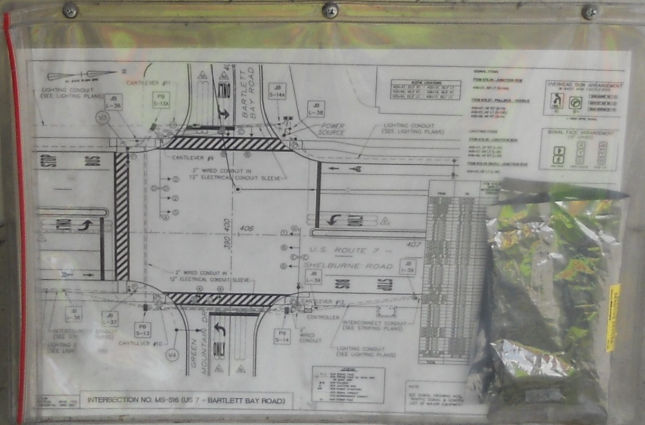
DANGER
115 VOLTS A.C.

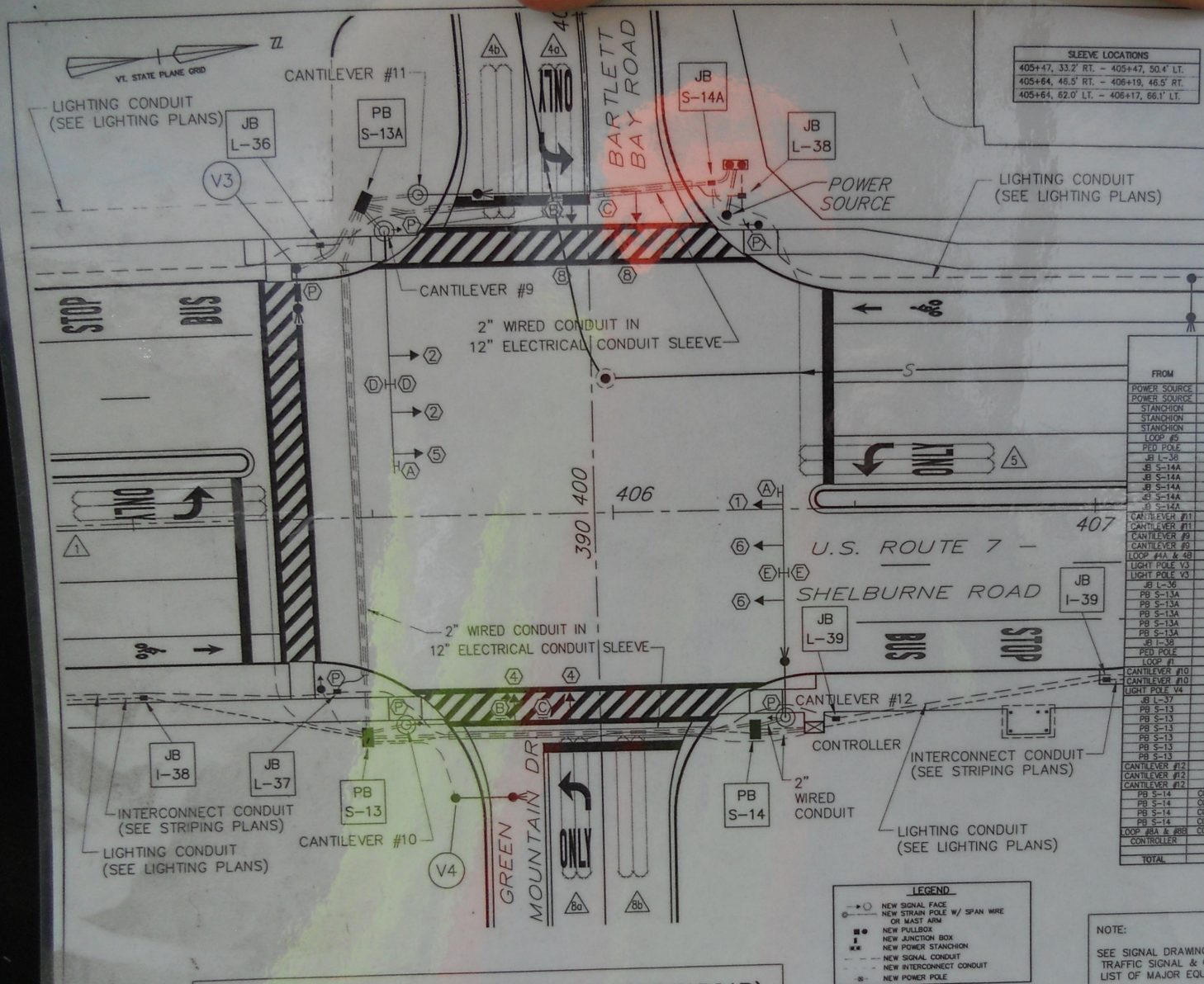
TURN ON
10-10-05

WARNING
DO NOT OPERATE
CABINET WITHOUT
CMU / MMU



SECOND-LITE





SLEEVE LOCATIONS

405+47, 33.2' RT.	- 405+47, 50.4' LT.
405+64, 46.5' RT.	- 406+19, 46.5' RT.
405+64, 62.0' LT.	- 406+17, 66.1' LT.

SIGNAL ITEMS

ITEM 678.26 - JUNCTION BOX
406+21, 66' LT (S-14A)

ITEM 678.27 - PULLBOX - DOUBLE
405+47, 46' RT (S-13)
405+51, 64' LT (S-13B)
406+28, 46' RT (S-14)

OVERHEAD SIGN ARRANGEMENT
● MAST ARM CANTILEVERS

IN-BLANK (R) (C)
IN-BLANK (M) (C)
GREEN (M) (C) (S)
● FIBER OPTIC SIGNAL

LIGHTING ITEMS

ITEM 678.26 - JUNCTION BOX
405+41, 37' RT (L-37)
406+27, 64' LT (L-38)
406+40, 45' RT (L-39)

ITEM 678.28 (MOD.) - JUNCTION BOX
405+42, 55' LT (L-38)

SIGNAL FACE ARRANGEMENT (12" LENSES)

PED FACE FACE 2,4,6,8 FACE 1,5

FROM	TO	ITEM 678.20 (MOD.) INTERCONNECT CONDUIT	ITEM 678.21 ELECTRICAL CONDUIT	ITEM 678.23 WIRED CONDUIT	ITEM 678.30 ELECTRICAL CONDUIT SLEEVE	DESCRIPTION		
				2"	2 1/2"	8"	12"	
POWER SOURCE	STANCHION					45		SIGNAL / VAOT LIGHTING - POW
POWER SOURCE	STANCHION					45		SOUTH BURLINGTON LIGHTING
STANCHION	JB S-14A			10				SIGNAL - POWER
STANCHION	JB S-14A			10				VAOT LIGHTING - POWER
STANCHION	JB L-36			10				SOUTH BURLINGTON LIGHTING
LOOP #5	JB S-14A			33				LOOP #5
PEO POLE	JB S-14A			26				SIGNAL
JB L-36	JB L-36			88				SOUTH BURLINGTON LIGHTING
JB S-14A	PB S-13A			70				LOOP #5
JB S-14A	PB S-13A			70				SIGNAL - POWER
JB S-14A	PB S-13A			70				SIGNAL - SPARE
JB S-14A	PB S-13A			70				VAOT LIGHTING
CANTILEVER #11	PB S-13A			70			53	SIGNAL
CANTILEVER #11	PB S-13A			17				SIGNAL
CANTILEVER #9	PB S-13A			17				VAOT LIGHTING
CANTILEVER #9	PB S-13A			27				PRE-EMPTION
CANTILEVER #9	PB S-13A			27				SIGNAL
LOOP #A & B	PB S-13A			30				LOOP #A & B
LIGHT POLE V3	PB S-13A			29				SIGNAL
LIGHT POLE V3	PB S-13A			29				VAOT LIGHTING
JB L-36	JB L-37			98				SOUTH BURLINGTON LIGHTING
PB S-13A	PB S-13			112				LOOP #A, B & C / PRE-EMPT
PB S-13A	PB S-13			112				SIGNAL - POWER
PB S-13A	PB S-13			100			84	SPARE
PB S-13A	PB S-13			112				VAOT LIGHTING
PB S-13A	PB S-13			112				INTERCONNECT
JB L-36	PB S-13			48				SIGNAL
PEO POLE	PB S-13			23				LOOP #5
LOOP #7	PB S-13			31				SIGNAL
CANTILEVER #10	PB S-13			14				SPARE
CANTILEVER #10	PB S-13			14				SIGNAL
LIGHT POLE V4	PB S-13			22				VAOT LIGHTING
JB L-37	JB L-38			99				SOUTH BURLINGTON LIGHTING
PB S-13	PB S-14			82				INTERCONNECT
PB S-13	PB S-14			82				LOOP #1, 4A, 4B & 5 / PRE-EMPT
PB S-13	PB S-14			82				SIGNAL - POWER
PB S-13	PB S-14			82			56	SPARE
PB S-13	PB S-14			82				SIGNAL
PB S-13	PB S-14			82				VAOT LIGHTING
PB S-13	PB S-14			82				PRE-EMPTION
CANTILEVER #12	PB S-14			13				VAOT LIGHTING
CANTILEVER #12	PB S-14			13				SIGNAL
PB S-14	CONTROLLER			18				INTERCONNECT
PB S-14	CONTROLLER			18				LOOPS 7 / PRE-EMPTION
PB S-14	CONTROLLER			18				SIGNAL - POWER
PB S-14	CONTROLLER			18				SIGNAL
PB S-14	CONTROLLER			31				LOOP #A & B
LOOP #A & B	CONTROLLER			68				INTERCONNECT
CONTROLLER	JB I-39							
TOTAL		216	266	1520	90		193	

LEGEND

- NEW SIGNAL FACE
- NEW STRAIN POLE W/ SPAN WIRE OR MAST ARM
- NEW PULLBOX
- NEW JUNCTION BOX
- NEW POWER STANCHION
- NEW SIGNAL CONDUIT
- NEW INTERCONNECT CONDUIT
- NEW POWER POLE

NOTE:
SEE SIGNAL DRAWING NOS. 1 & 2 FOR TRAFFIC SIGNAL & GENERAL NOTES AND LIST OF MAJOR EQUIPMENT.

4/20/04
SCALE IN FEET
0 10 20

SHELburne - SOUTH BURLINGTON
SURVEYED BY V.S.C. INC. DATE _____
DRAWN BY E.A.A. INC. DATE _____
TRACED BY E.A.A. INC. DATE _____
REVISED SIGNAL DESIGN
PROJECT NH-ECC-019-4(28)
SIGNAL DRAWING NO. 5
SHEET NO. 130A OF 283

DATUM
VERTICAL NGVD 1929
HORIZONTAL NAD 1927

INTERSECTION NO. MS-516 (US 7 - BARTLETT BAY ROAD)



B. I. U
DETECTOR
#1

CS 4R
CS 4S

PREDPTOR
EVP#3
EVP#4

PREDPTOR
EVP#5
EVP#6

NO T
USED

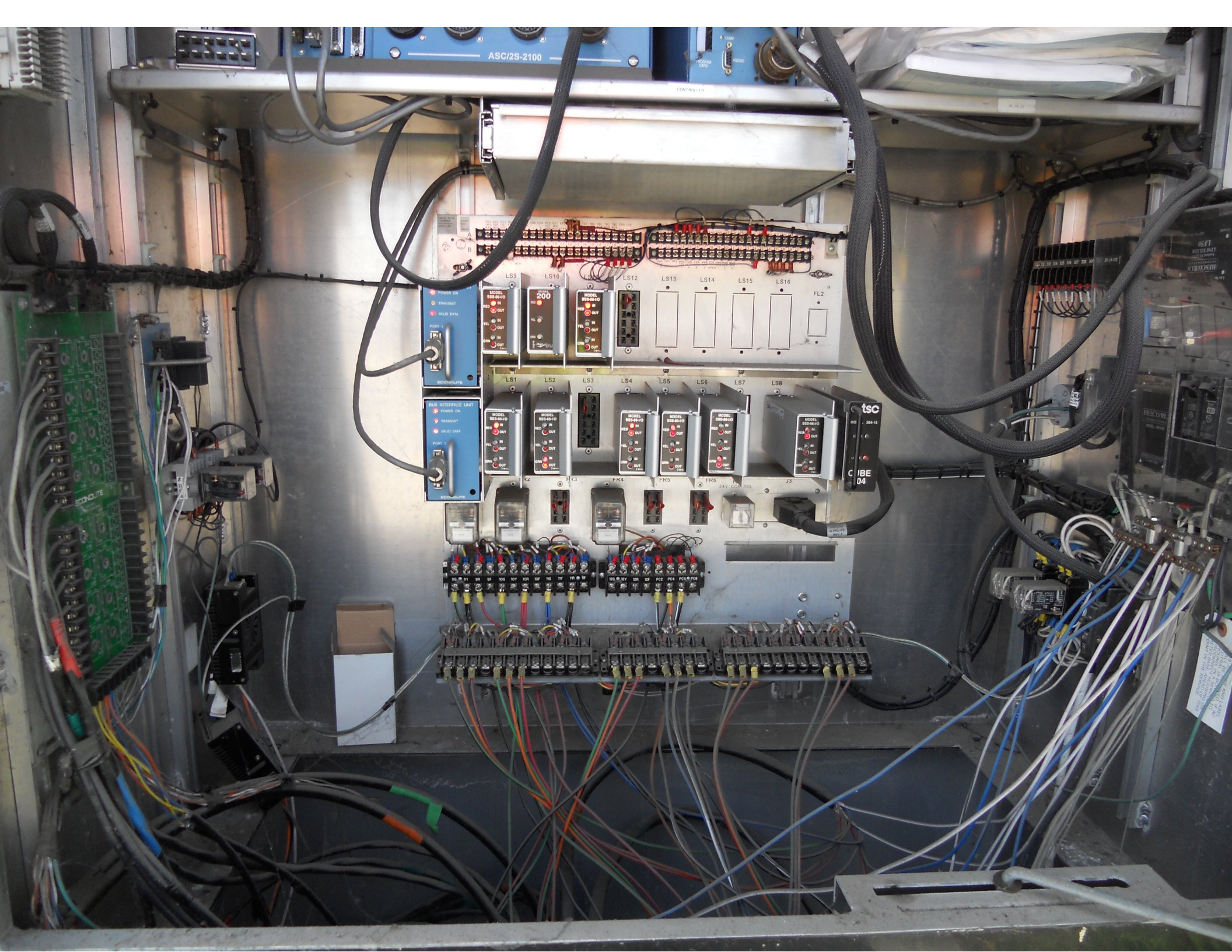


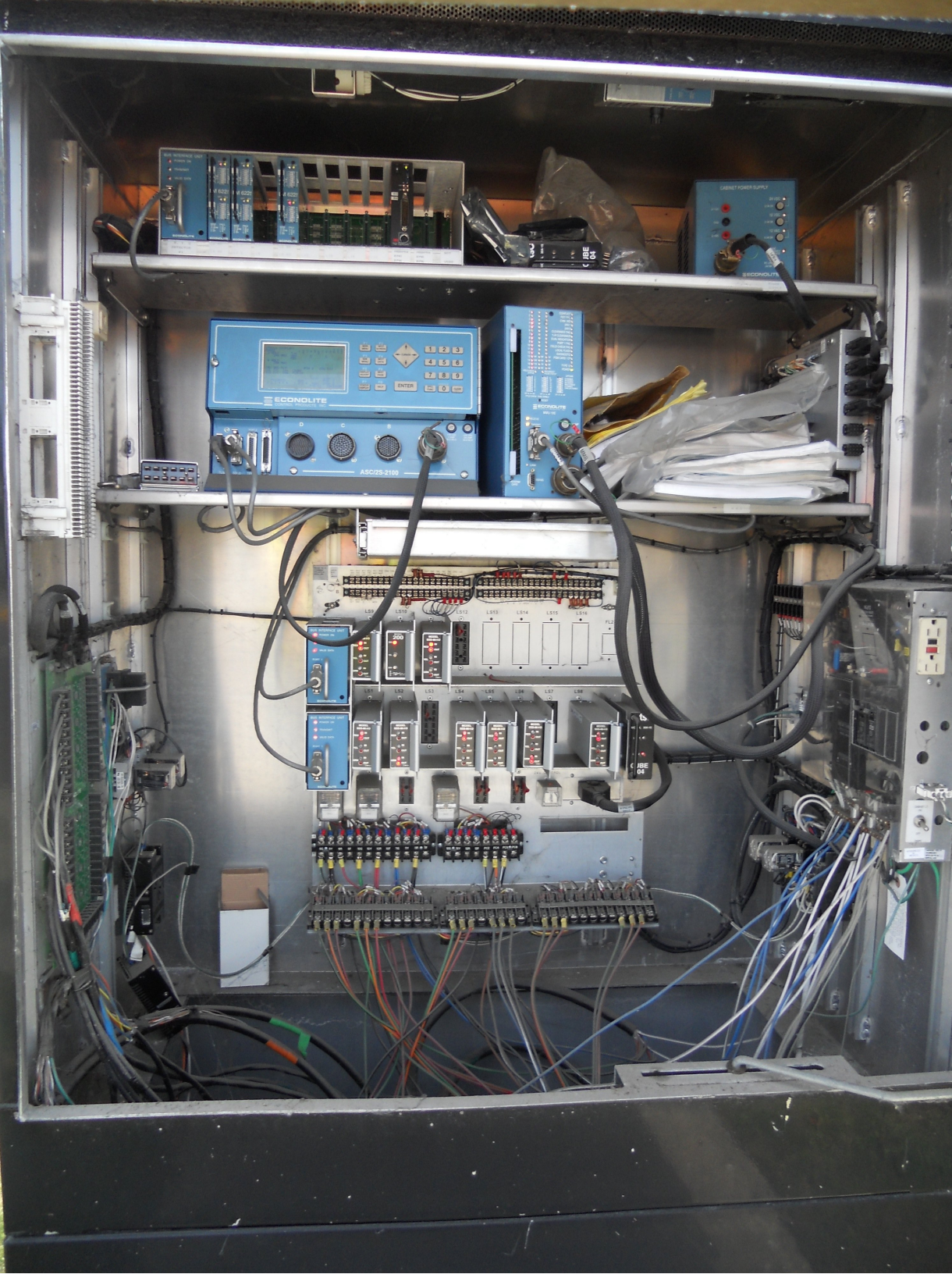
STATUS DISPLAY
2 3 4 5 6 7 8 9 0 1 1
1 2 3 4 5 6 7 8 9 0 1 2
PTN 2 COS 211
PRIORITY 1 2 3 4 5
NIC: STEF

F1
MAIN
MENU
F2
NEXT
SCREEN
F3
SUB
MENU
F4
NEXT
DATA
F5
DISPLAY
ADJUST
F6
NEXT



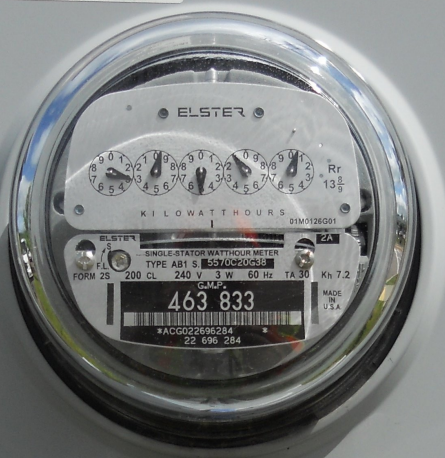
1 2 3
4 5 6





jiffy lube

⚠ DANGER / PELIGRO
HAZARD OF ELECTRICAL SHOCK OR BURN
SERVICE BY QUALITY AUTHORIZED PERSONNEL ONLY
DO NOT PAINT OVER OR REMOVE THIS LABEL
PELIGRO DE DESCARGA ELÉCTRICA O QUEMADURA
SERVICIO POR PERSONAL AUTORIZADO DE CALIDAD
NO PINTAR ENCIMA NI REMOVER ESTA ETIQUETA



CIRCUIT BREAKERS UNDER FLAP
NO FUSES IN BOX
DO NOT BREAK SEAL

⚠ DANGER / PELIGRO
HAZARD OF ELECTRICAL SHOCK OR BURN
SERVICE BY QUALITY AUTHORIZED PERSONNEL ONLY
DO NOT PAINT OVER OR REMOVE THIS LABEL
PELIGRO DE DESCARGA ELÉCTRICA O QUEMADURA
SERVICIO POR PERSONAL AUTORIZADO DE CALIDAD
NO PINTAR ENCIMA NI REMOVER ESTA ETIQUETA





Self-Drive Thru





SHELBURNE RD



SHELBURNE RD



Direct Body

MAGIC HAT

SPEED LIMIT 25

enter

LEGAL LOAD LIMIT 24000 POUNDS

#C11 - 150 - H.P.S. - III

PLATE WITH UNREADABLE ENGRAVED INFORMATION















BARTLETT BAY RD

WHELBURG ST

GREEN MOUNTAIN

LEFT TURN
OR
U
TURN

Jiffy Lube

Ford

Worker in yellow vest



GREEN MT DR



TOWN & COUNTRY

DOW











GREEN MT DR

ONLY



NO PARKING

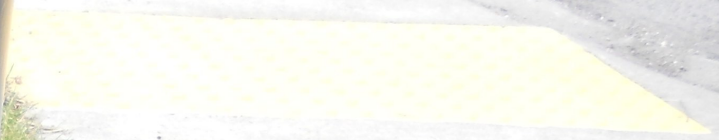
STOP
BUS

AUTO PART
SIMPSON
CABINETS

SALES CENTER

#C12 - 150 - H.P.S. - III

[Empty metal label]





TOYOTA

HENRI

enter





HERITAGE

ONE WAY

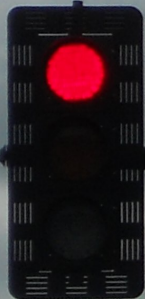


TOYOTA

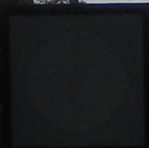
HERITAGE

8BMA 887

SOUTH BURNING WOOD



SHELBURNE RD



WALDMART



LEGAL LOAD
LIMIT
24000









BUICK

GMC

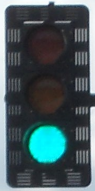
Cadillac

SHEARER



CHEVROLET
SHEARER

PLEASE
PUSH
FOR
CROSSWALK



SHELBURNE RD



LEGAL LOAD
LIMIT
24000
POUNDS

87

UMC
76A 12 20 ARN
76A 9 36 55K5T
0422004





GREEN MEADOWS

ONLY

Jiffy Lube

Walmart

DR

LEFT TURN
OR
U
TURN

Jeep

RIGHT ONLY

BARTLETT BAY

SPRINGFIELD

BUICK
CIVIC
Cadillac
SHEARER





BARTLETT BAY RD





BARTLETT BAY RD





Coordinator Manual Command and Options

Manual Enable Pattern 1
Split Units Seconds OffsetUnits Seconds
Interconnect Format . STD Interconnect Source . TLM
Transition. SMOOTH Dwell Period. 0
Resync Count. 0

Actuated Coord Phase X Actuated Walk Rest
Inhibit Max Timing X Max 2 Select
Floating Force Off Multisync.

		Phase												
Split Demand: Call	Time Cyc	Count	1	2	3	4	5	6	7	8	9	10	11	12
Demand 1	0	0
Demand 2	0	0

		Phase											
Auto Permissive Min Green .		1	2	3	4	5	6	7	8	9	10	11	12
		0	0	0	0	0	0	0	0	0	0	0	0

Free Alternate Sequence	A	B	C	D	E	F

NIC Program Steps

Step	Program	Step Begins	Pattern	Override
1	1	0600	1	NO
2	1	0800	2	NO
3	1	1600	3	NO
4	1	1800	2	NO
5	2	0600	2	NO
6	2	1130	3	NO
7	2	1600	2	NO

TOD Program Steps

Step 1 Program 1 Step Begins 0600

Flash. Dimming Enable.
 Red Rest Alt Veh Extension
 Spare 5. Det Log Enable.
 Spare 3. Spare 4
 Type 0 Dly Enable. . . Spare 2
 Det Diag Plan. . . . 0

	Phase Number											
	1	2	3	4	5	6	7	8	9	10	11	12
Max 2 Enable
Max 3 Enable
Veh Recall
Veh Max Recall
Ped Recall
Cond Service Inhibit.
Phase Omit
Special Function

	A	B	C	D	E	F
Alt Sequence

Step 2 Program 1 Step Begins 0800

Flash. Dimming Enable.
 Red Rest Alt Veh Extension
 Spare 5. Det Log Enable.
 Spare 3. Spare 4
 Type 0 Dly Enable. . . Spare 2
 Det Diag Plan. . . . 0

	Phase Number											
	1	2	3	4	5	6	7	8	9	10	11	12
Max 2 Enable	X	X	.	X	X	X	.	X
Max 3 Enable
Veh Recall
Veh Max Recall
Ped Recall
Cond Service Inhibit.
Phase Omit
Special Function

	A	B	C	D	E	F
Alt Sequence

TOD Program Steps

Step 3 Program 1 Step Begins 1600

Flash. Dimming Enable.
 Red Rest Alt Veh Extension
 Spare 5. Det Log Enable.
 Spare 3. Spare 4
 Type 0 Dly Enable. . . Spare 2
 Det Diag Plan. . . . 0

	Phase Number											
	1	2	3	4	5	6	7	8	9	10	11	12
Max 2 Enable
Max 3 Enable	X	X	.	X	X	X	.	X
Veh Recall
Veh Max Recall
Ped Recall
Cond Service Inhibit.
Phase Omit
Special Function

Alt Sequence A B C D E F

Step 4 Program 1 Step Begins 1800

Flash. Dimming Enable.
 Red Rest Alt Veh Extension
 Spare 5. Det Log Enable.
 Spare 3. Spare 4
 Type 0 Dly Enable. . . Spare 2
 Det Diag Plan. . . . 0

	Phase Number											
	1	2	3	4	5	6	7	8	9	10	11	12
Max 2 Enable	X	X	.	X	X	X	.	X
Max 3 Enable
Veh Recall
Veh Max Recall
Ped Recall
Cond Service Inhibit.
Phase Omit
Special Function

Alt Sequence A B C D E F

TOD Program Steps

Step 5 Program 2 Step Begins 0600

Flash. Dimming Enable.
 Red Rest Alt Veh Extension
 Spare 5. Det Log Enable.
 Spare 3. Spare 4
 Type 0 Dly Enable. . . Spare 2
 Det Diag Plan. . . . 0

	Phase Number											
	1	2	3	4	5	6	7	8	9	10	11	12
Max 2 Enable	X	X	.	X	X	X	.	X
Max 3 Enable
Veh Recall
Veh Max Recall
Ped Recall
Cond Service Inhibit.
Phase Omit
Special Function

Alt Sequence A B C D E F

Step 6 Program 2 Step Begins 1130

Flash. Dimming Enable.
 Red Rest Alt Veh Extension
 Spare 5. Det Log Enable.
 Spare 3. Spare 4
 Type 0 Dly Enable. . . Spare 2
 Det Diag Plan. . . . 0

	Phase Number											
	1	2	3	4	5	6	7	8	9	10	11	12
Max 2 Enable
Max 3 Enable	X	X	.	X	X	X	.	X
Veh Recall
Veh Max Recall
Ped Recall
Cond Service Inhibit.
Phase Omit
Special Function

Alt Sequence A B C D E F

TOD Program Steps

Step 7 Program 2 Step Begins 1600

Flash. Dimming Enable.
 Red Rest Alt Veh Extension
 Spare 5. Det Log Enable.
 Spare 3. Spare 4
 Type 0 Dly Enable. . . Spare 2
 Det Diag Plan. . . . 0

	Phase Number											
	1	2	3	4	5	6	7	8	9	10	11	12
Max 2 Enable	X	X	.	X	X	X	.	X
Max 3 Enable
Veh Recall
Veh Max Recall
Ped Recall
Cond Service Inhibit.
Phase Omit
Special Function

Alt Sequence A B C D E F

Step 9 Program 1 Step Begins 0000

Flash. Dimming Enable.
 Red Rest Alt Veh Extension
 Spare 5. Det Log Enable.
 Spare 3. Spare 4
 Type 0 Dly Enable. . . Spare 2
 Det Diag Plan. . . . 0

	Phase Number											
	1	2	3	4	5	6	7	8	9	10	11	12
Max 2 Enable
Max 3 Enable
Veh Recall
Veh Max Recall
Ped Recall
Cond Service Inhibit.
Phase Omit
Special Function

Alt Sequence A B C D E F

TOD Program Steps

Step 10 Program 2 Step Begins 0000

Flash.	Dimming Enable.
Red Rest	Alt Veh Extension
Spare 5.	Det Log Enable.
Spare 3.	Spare 4
Type 0 Dly Enable.	Spare 2
Det Diag Plan.	0	

	Phase Number											
	1	2	3	4	5	6	7	8	9	10	11	12
Max 2 Enable
Max 3 Enable
Veh Recall
Veh Max Recall
Ped Recall
Cond Service Inhibit.
Phase Omit
Special Function

	A	B	C	D	E	F
Alt Sequence
