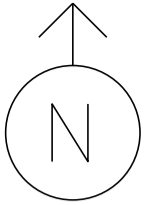
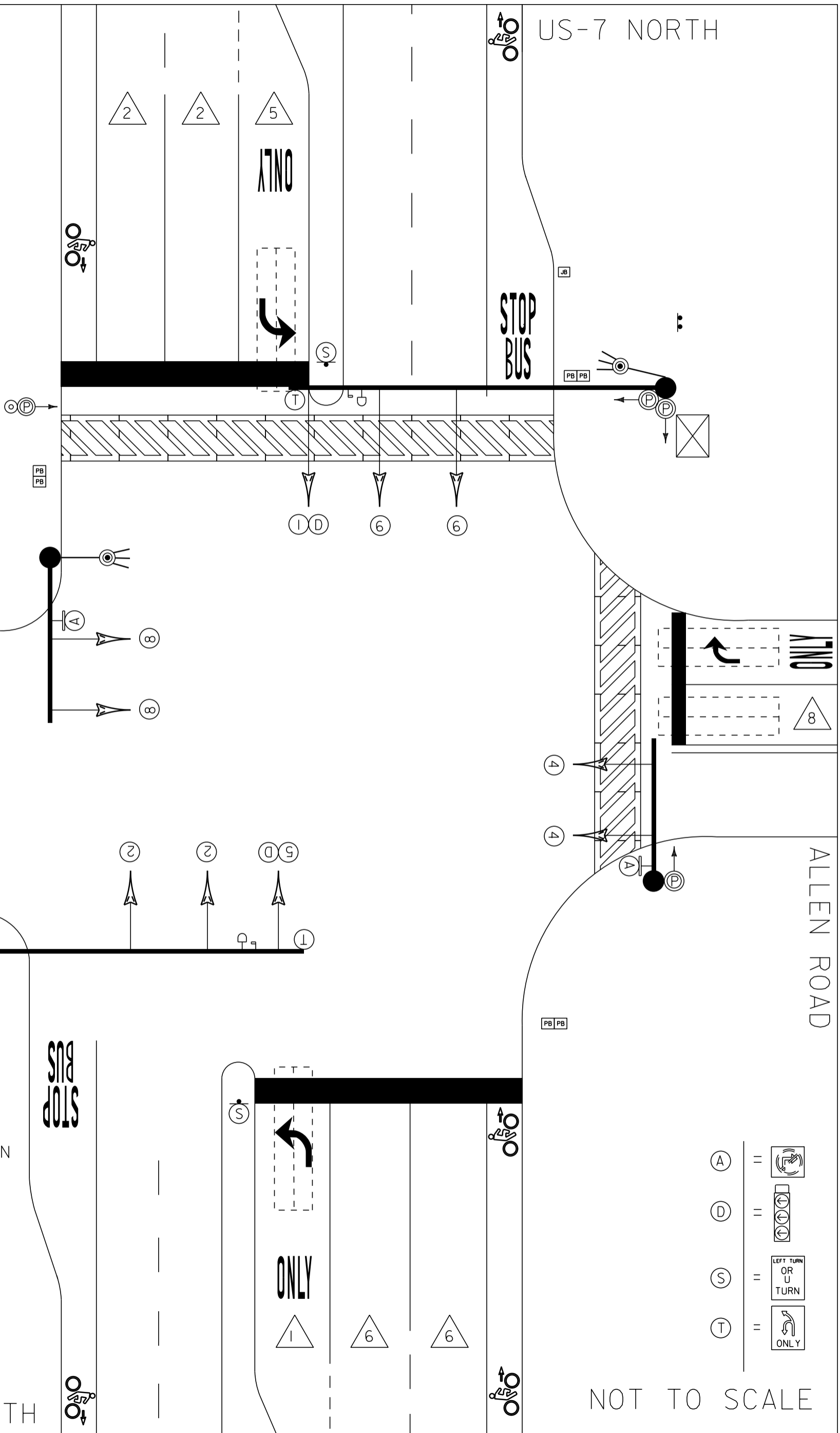


MS # 514



US-7 NORTH

MITSUBISHI DEALERSHIP



- ⊙ PEDESTAL POST
- Ⓟ PEDESTRIAN SIGNAL
- ⌞ PREEMPTION DETECTOR
- ⌚ PREEMPTION STROBE
- ⌞ L.E.D REGULATORY SIGN
- ⊠ CONTROL BOX
- MAST ARM
- LOOP DETECTION
- Ⓜ JUNCTION BOX
- Ⓟ PULL BOX
- ⌞ LUMINAIRE
- ⌚ STANCHION
- ⌞ ROADWAY SIGN

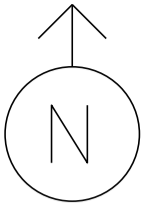
- (A) =
- (D) =
- (S) =
- (T) =

US-7 SOUTH

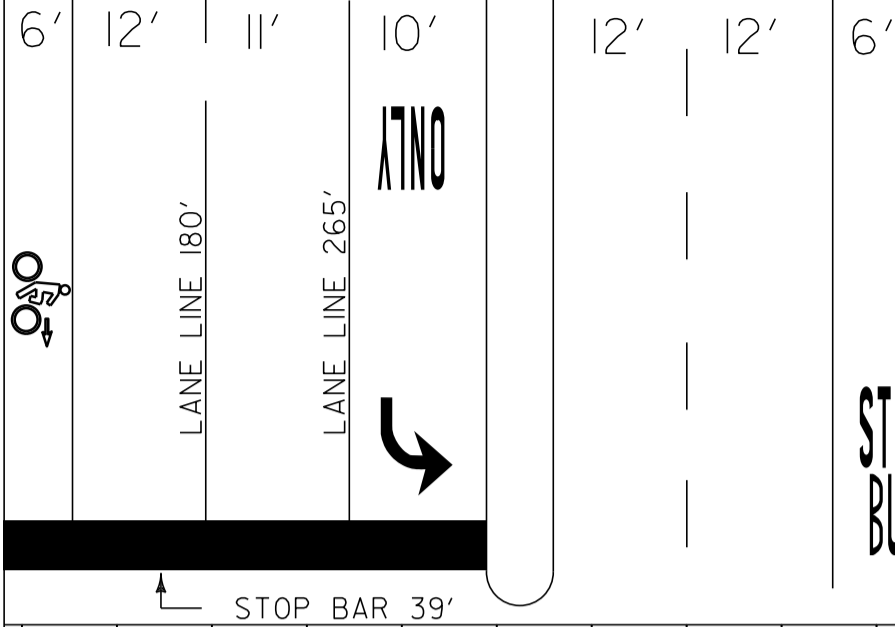
NOT TO SCALE

ALLEN ROAD

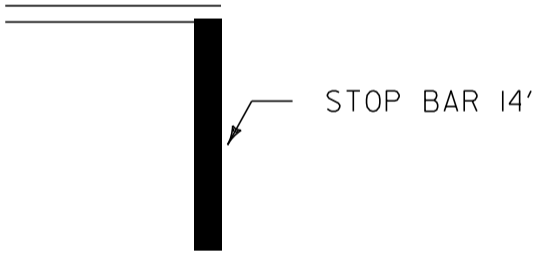
MS # 514



US-7 NORTH

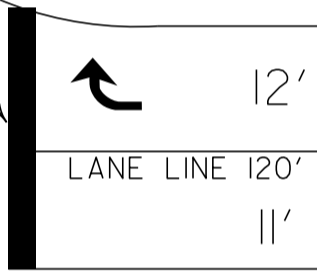


MIT SUBISHI DEALERSHIP



STOP BAR 29'

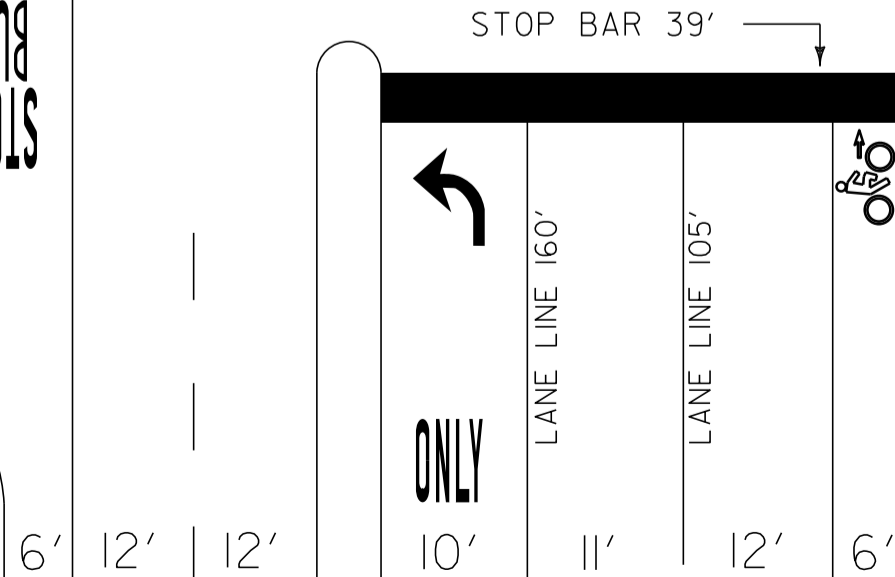
CROSSWALK 65'



ALLEN ROAD

STOP BAR 39'

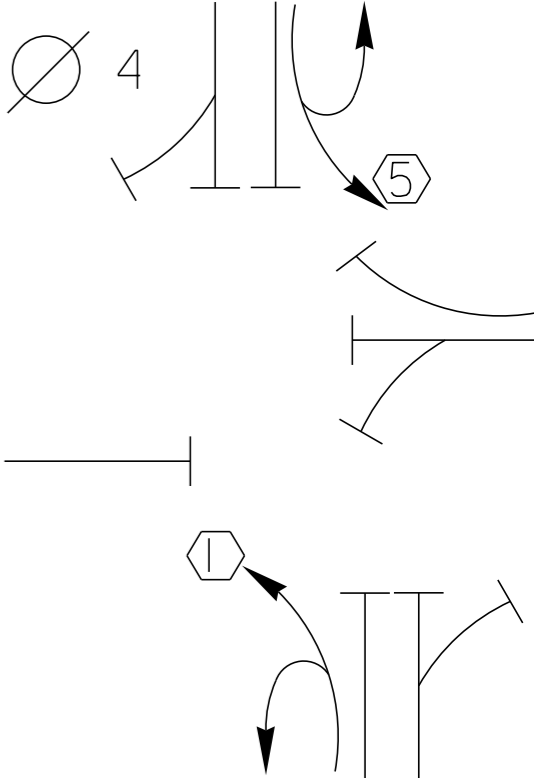
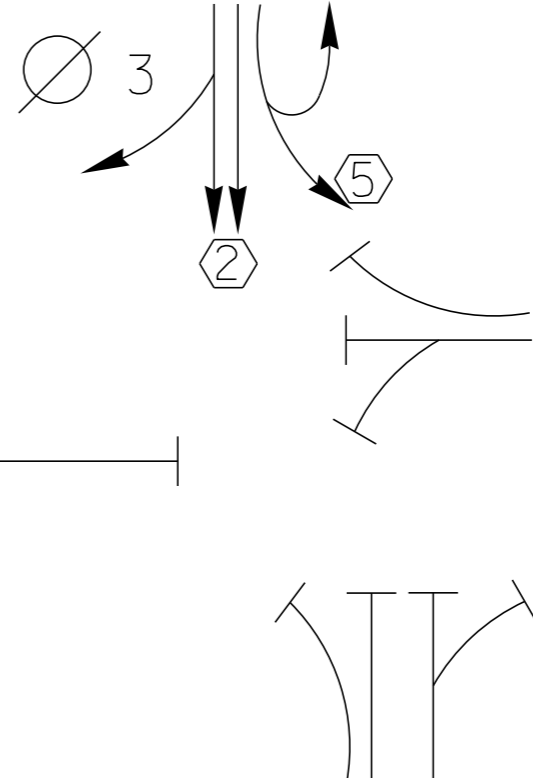
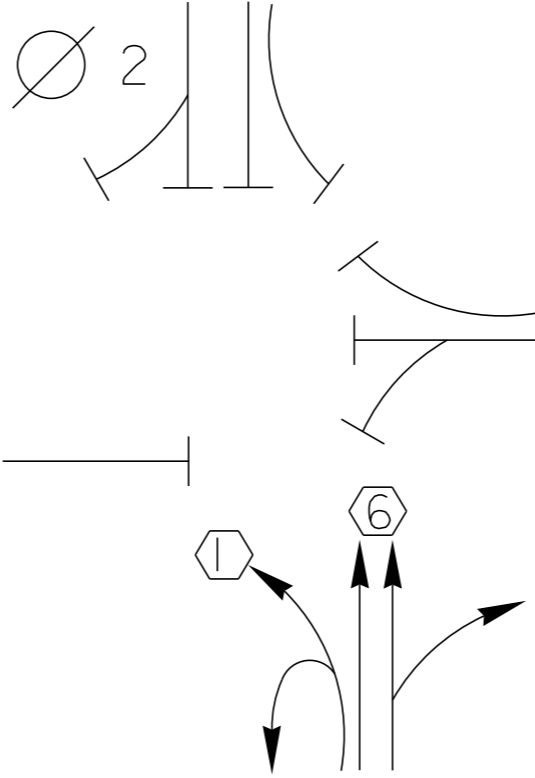
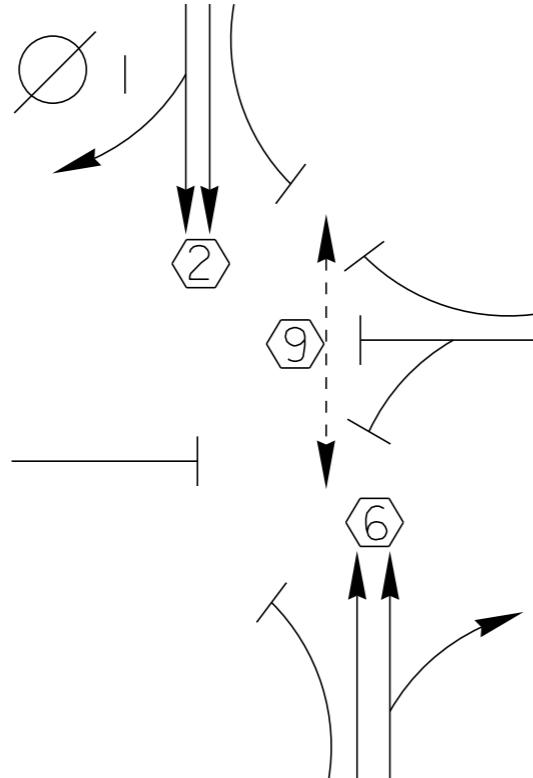
STOP BUS



US-7 SOUTH

NOT TO SCALE

D I A G R A M



TIMING

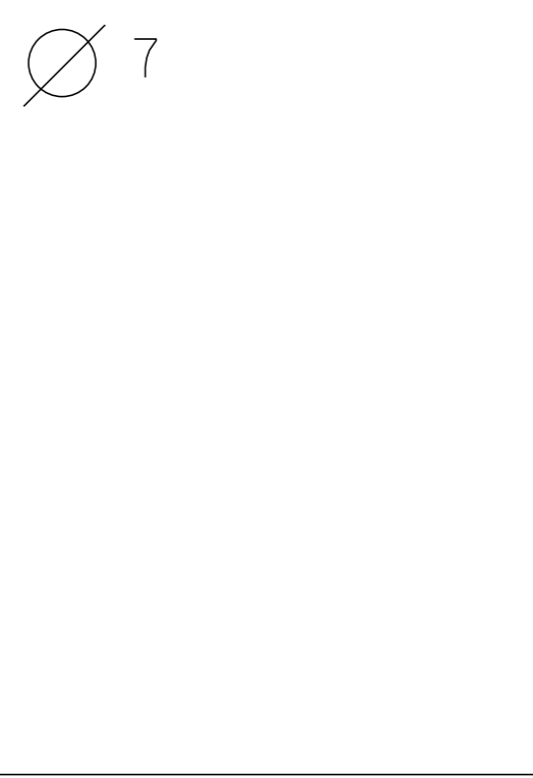
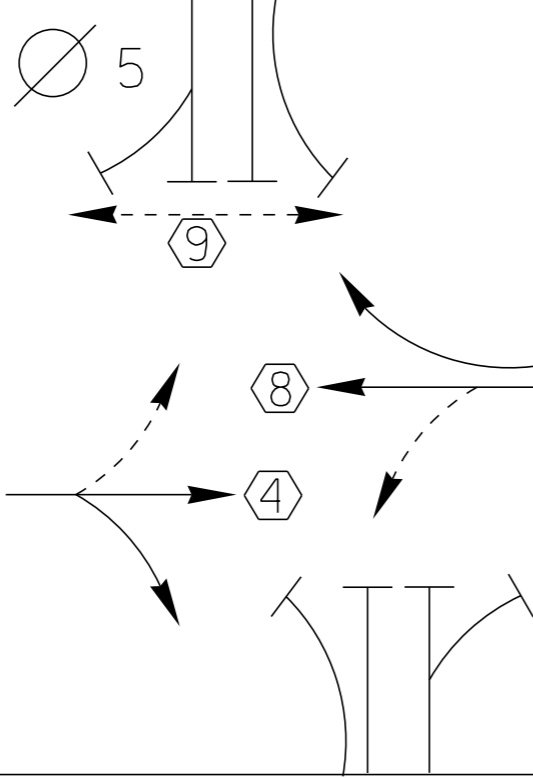
G =
Y =

G =
Y =

G =
Y =

G =
Y =

D I A G R A M



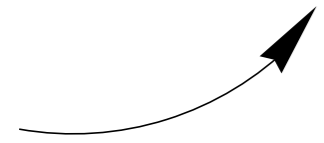
TIMING

G =
Y =

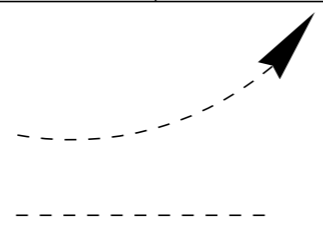
G =
Y =

G =
Y =

G =
Y =



PROTECTED
TURNS



PERMITTED
TURNS
PEDESTRIAN

CYCLE LENGTH, C = _____ S



**PROPERTY OF :
VT. AGENCY OF TRANS.
MAINTENANCE DIV.**

**IN EMERGENCY CALL :
DIST. TRANS. OFFICE
655-1580 COLCHESTER
NIGHTS & WEEKENDS : 878-7111
INTERSECTION NO. MS-514**

DANGER
115 VOLTS A.C.

WARNING
DO NOT OPERATE
CABINET WITHOUT
CMU / MMU

TURN ON
10-14-05

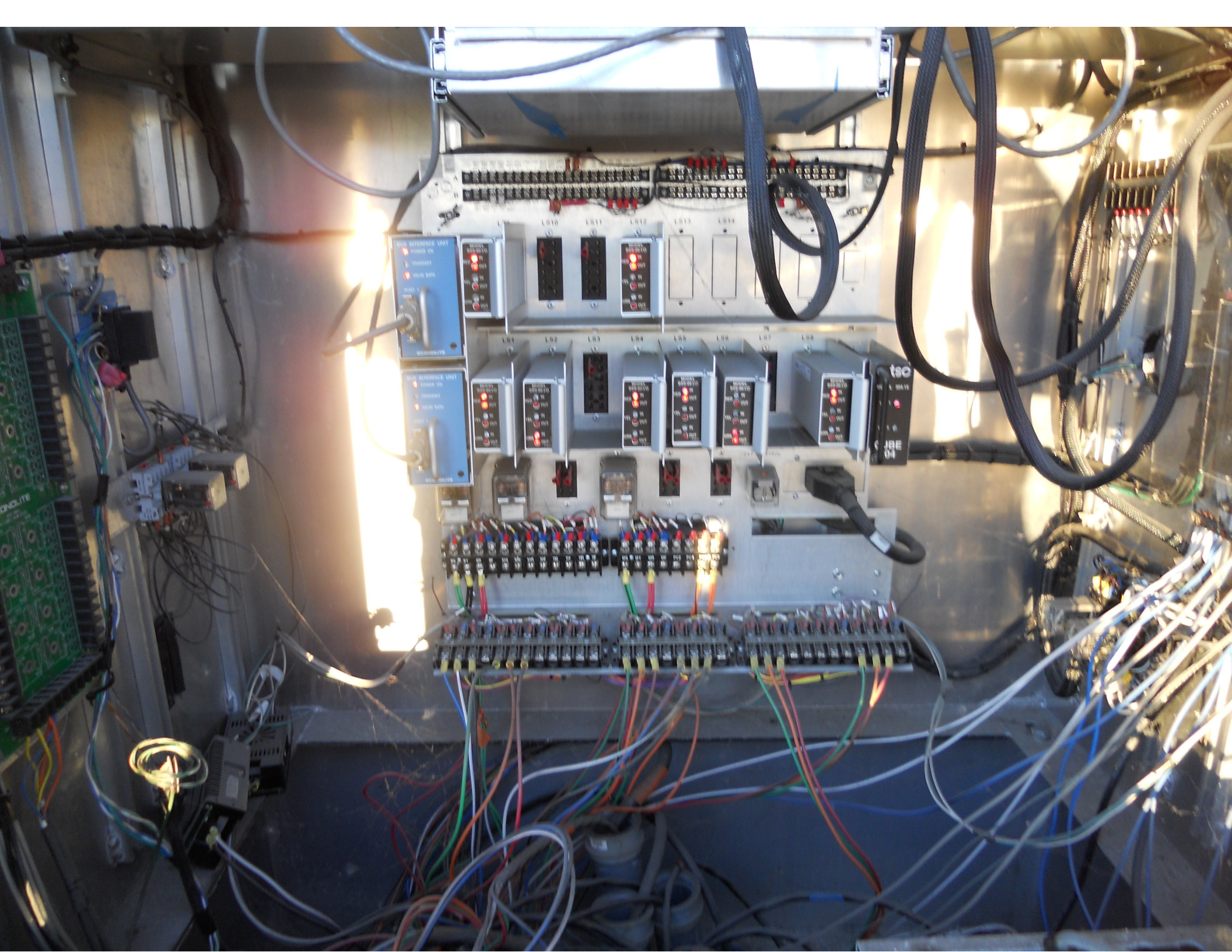
Control panel with three toggle switches and a rectangular display window.

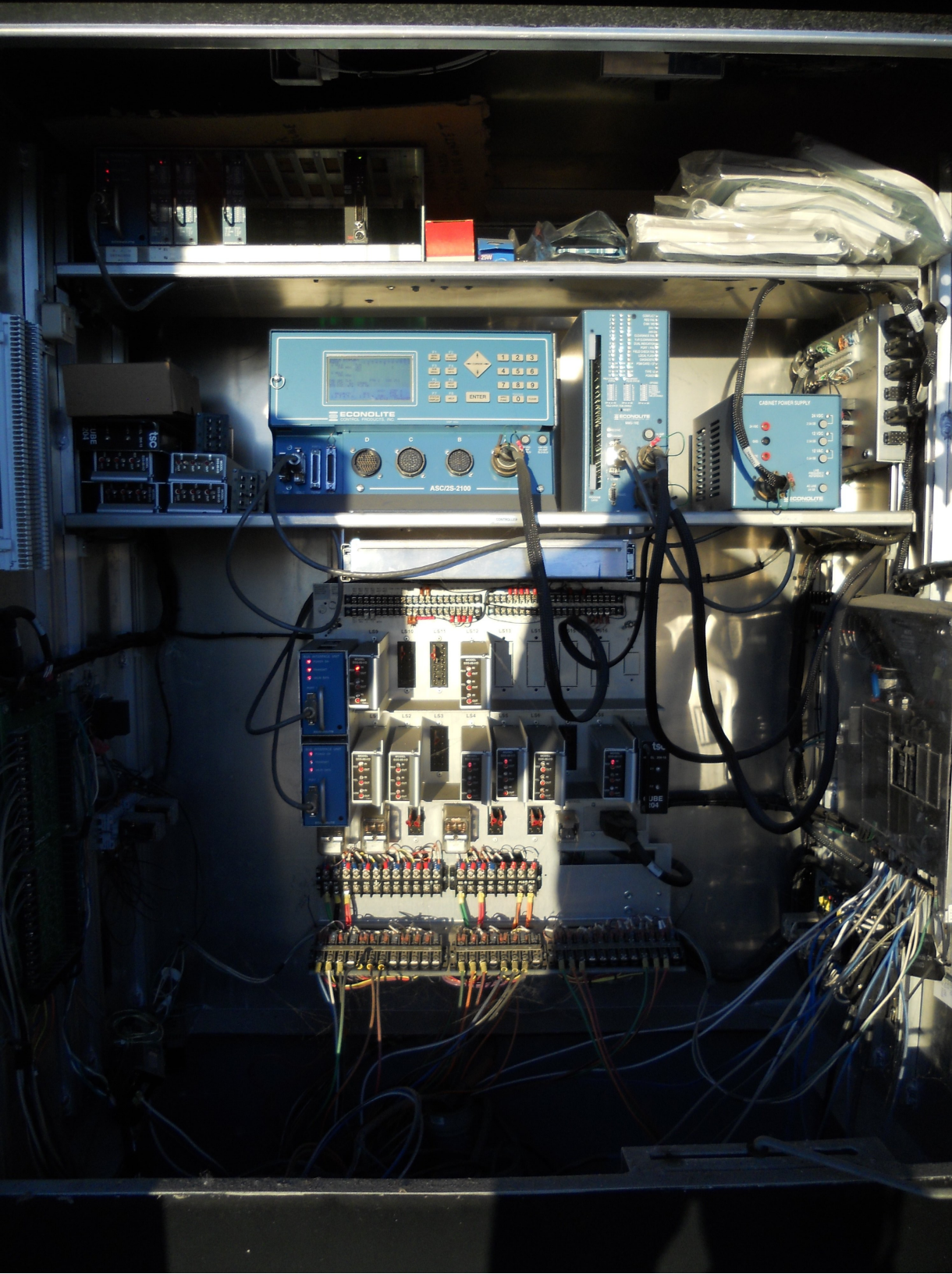
Clear plastic bag containing:
- Installation Instructions
- Opticom™
- Primary Control System
- Model 133 Power Switch
- Model 134 Control Panel
- Model 135 Accessory Power



REGONOLITE

Internal wiring and components of the cabinet, including a terminal block with various colored wires (blue, green, red) and a power supply unit.





BUS INTERFACE UNIT

- POWER ON
- TRANSMIT
- VALID DATA

PORT 1

ECONOLITE

LM 622t

ECONOLITE

LM 622t

ECONOLITE

LM 22t

ECONOLITE

3M 752 Opticom

Ch 4
Ch 8

FREQPTOR
EVPK
EVPK

FREQPTOR
EVPK
EVPK

NOT
USED

B. I. U
DETECTOR
#1

L3 = 8A
L4 = 8B

L1 1
L2 5

L7
L8

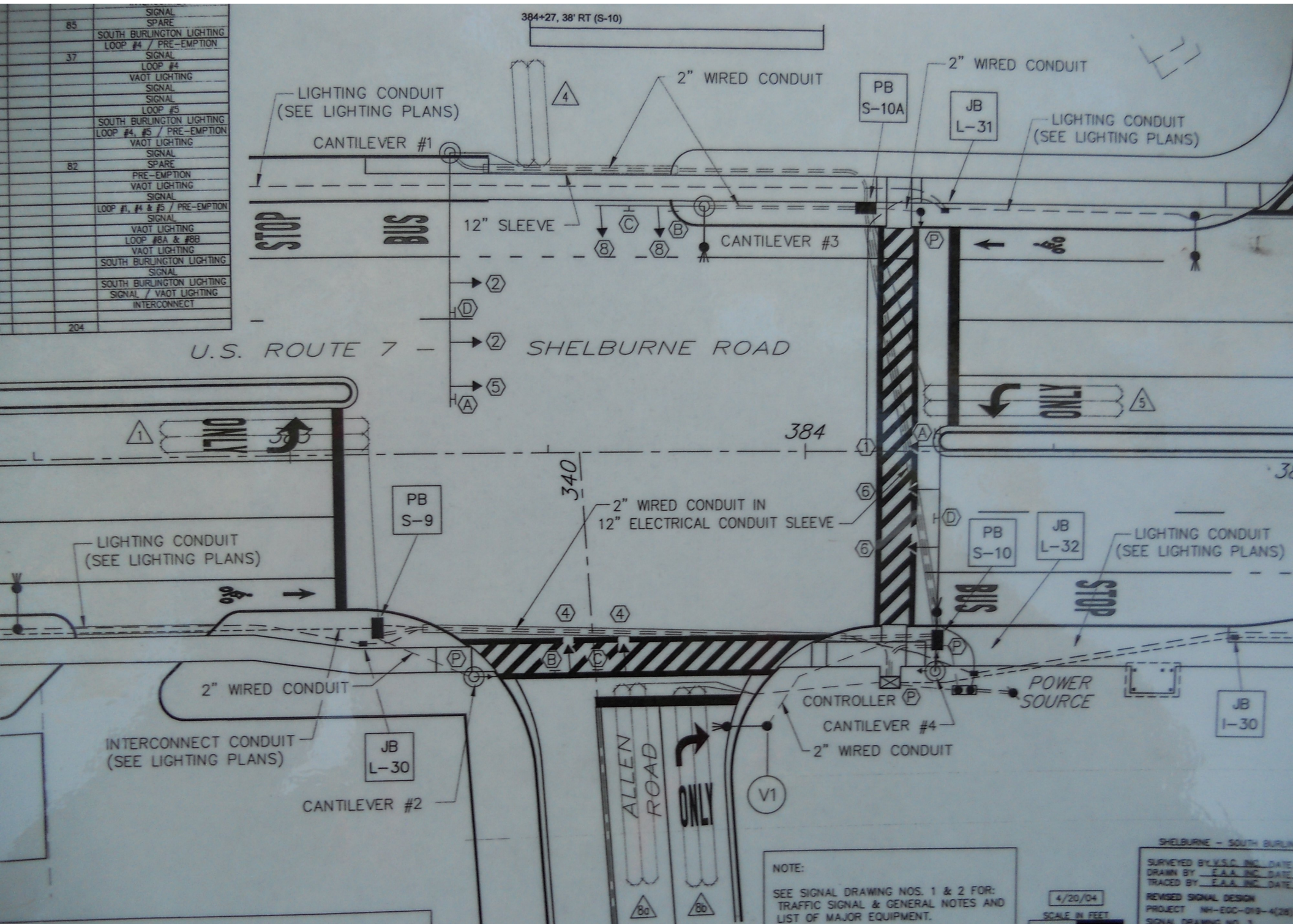
L5 = 4
L6 = 11

ECONOLITE
CONTROL PRODUCTS, INC.

F1 MAIN MENU
F2 NEXT SCREEN
F3 SUB MENU
F4 NEXT DATA
F5 DISPLAY ADJUST
F6 NET P1

CURSOR

85	SIGNAL SPARE
	SOUTH BURLINGTON LIGHTING LOOP #4 / PRE-EMPTION
37	SIGNAL LOOP #4 VAOT LIGHTING
	SIGNAL LOOP #5
	SOUTH BURLINGTON LIGHTING LOOP #4, #5 / PRE-EMPTION
	VAOT LIGHTING
82	SIGNAL SPARE
	PRE-EMPTION
	VAOT LIGHTING
	SIGNAL LOOP #1, #4 & #5 / PRE-EMPTION
	SIGNAL LOOP #8A & #8B
	VAOT LIGHTING
	SOUTH BURLINGTON LIGHTING SIGNAL
	SOUTH BURLINGTON LIGHTING SIGNAL / VAOT LIGHTING INTERCONNECT
204	



NO. MS-515 (US 7 - ALLEN ROAD)

SHELBURNE - SOUTH BURLINGTON
 SURVEYED BY V.S.C. INC. DATE
 DRAWN BY F.A.A. INC. DATE
 TRACED BY F.A.A. INC. DATE
 REVISED SIGNAL DESIGN
 PROJECT NH-EDC-018-4(28)
 SIGNAL DRAWING NO. 3
 SHEET NO. 128A OF 283

HAZARD OF ELECTRICAL SHOCK
OR BURN IF COVER REMOVED
SERVICE BY UTILITY
AUTHORIZED PERSONNEL ONLY
DO NOT PAINT OVER OR REMOVE THIS LABEL
PHOTO: 10/11

75
YEARS
Milbank Mfg. Co.

ELSTER

KILOWATT HOURS 01M0126G01

ELSTER
SINGLE-STATOR WATT-HOUR METER
TYPE AB1 S B53V0220850

FORM 2S 200 CL 240 V 3 W 60 Hz TA 30 Kh 7.2

G.M.P.
463 812

MADE IN U.S.A.
ACG022696263
22 696 263

COMMERCIAL

CIRCUIT BREAKER COVER FLAP
DO NOT OPEN
DO NOT OPEN

COMMERCIAL
Master

HAZARD OF ELECTRICAL SHOCK
OR BURN IF COVER REMOVED
SERVICE BY UTILITY
AUTHORIZED PERSONNEL ONLY
DO NOT PAINT OVER OR REMOVE THIS LABEL
PHOTO: 10/11



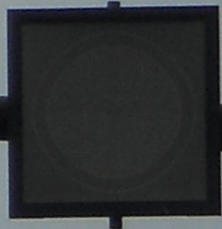
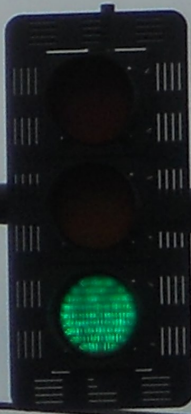
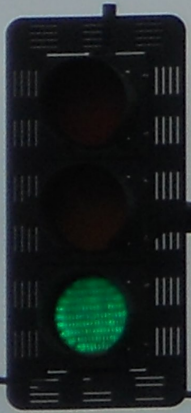


LANE





SHELBURNE RD



Stral Steel

MITSUBISHI



#C3 - 150 - H.P.S. - III



#C3 - 150 - H.P.S. - III

UMC.
7GA 11 33 ARM
7GA 7 21 55KSI
04/2004













LEFT TURN
OR
U
TURN

ONLY

ALLEN RD

1820

LEAPS
BOUNDS

ONLY



ALLEN RD



SPEED LIMIT
40

NO
LEFT
TURN
ONLY

NO
PARKING
BUS LANE



ONLY

ALLEN RD

ONLY

NO PARKING
IN
BUS LANE

40

120

#C4 - 150 - H.P.S. - III

150
150 150 150
150 150 150
150 150 150



#C4 - 150 - H.P.S. - III

U.M.C.

7GA 14 33 61

7GA 10 49 55K

04/2004

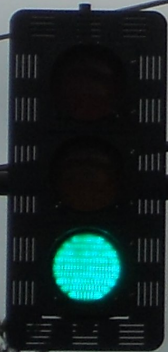


SHELBURNE RD

CAUTION
ROAD WORK
AHEAD

CAUTION
ROAD WORK
AHEAD

SHELBURNE RD



SHELBURNE RD



SPEED 35
AHEAD STOP AHEAD

LEGAL LOAD
LIMIT
24000
POUNDS

SPEED
LIMIT
35





100
100 11 20 KPM
100 0 31 55851
01/2001

UMC
7GA 11 30 ARM
7GA 8 31 55KSI
04/2004



Champ
Car Wash





ONLY

ONE WAY

LEAF'S BOUNDS

Mobil





LEFT TURN
OR
U
TURN

BUSINESS RD

ONLY

ALLEN RD

Mobil





ALLEN RD



NORTH STAR
MOTEL

TRUCK
U-TURN
2 1/2 MILES

SPEED
LIMIT
40











SHELBY

ALLEN RD



NO PARKING
IN THIS ZONE

Shell

40





Coordination Patterns

```

-----
Pattern 1
Cycle Length . . . 70  COS . . . . . 111
Offset . . . . . 23
Vehicle Permissive . . [1] 0 [2] 0
Vehicle Perm 2 Displacement 0 Phase Reservice. . NO
Splits: Phase 1- 14 2- 36 3- 0 4- 20
          Phase 5- 14 6- 36 7- 0 8- 20
          Phase 9- 0 10- 0 11- 0 12- 0 Split Sum: 0
Split Extension/Ring [1] 0 [2] 0
Split Demand Pattern [1] 0 [2] 0
XRT Pattern. . . 0
Phase Number: 1 2 3 4 5 6 7 8 9 10 11 12
Coord Phases . . . X . . . X . . . . .
Veh Recall . . . . . . . . . . .
Veh Max Recall . . X . . . X . . . . .
Ped Recall . . . . . . . . . . .
Veh Omit . . . . . . . . . . .
Alt Sequence . . A: . B: . C: . D: . E: . F: .
-----
    
```

```

-----
Pattern 2
Cycle Length . . . 70  COS . . . . . 211
Offset . . . . . 41
Vehicle Permissive . . [1] 0 [2] 0
Vehicle Perm 2 Displacement 0 Phase Reservice. . NO
Splits: Phase 1- 14 2- 36 3- 0 4- 20
          Phase 5- 14 6- 36 7- 0 8- 20
          Phase 9- 0 10- 0 11- 0 12- 0 Split Sum: 0
Split Extension/Ring [1] 0 [2] 0
Split Demand Pattern [1] 0 [2] 0
XRT Pattern. . . 0
Phase Number: 1 2 3 4 5 6 7 8 9 10 11 12
Coord Phases . . . X . . . X . . . . .
Veh Recall . . . . . . . . . . .
Veh Max Recall . . X . . . X . . . . .
Ped Recall . . . . . . . . . . .
Veh Omit . . . . . . . . . . .
Alt Sequence . . A: . B: . C: . D: . E: . F: .
-----
    
```

```

-----
Pattern 3
Cycle Length . . . 80  COS . . . . . 311
Offset . . . . . 47
Vehicle Permissive . . [1] 0 [2] 0
Vehicle Perm 2 Displacement 0 Phase Reservice. . NO
Splits: Phase 1- 15 2- 44 3- 0 4- 21
          Phase 5- 15 6- 44 7- 0 8- 21
          Phase 9- 0 10- 0 11- 0 12- 0 Split Sum: 0
Split Extension/Ring [1] 0 [2] 0
Split Demand Pattern [1] 0 [2] 0
XRT Pattern. . . 0
Phase Number: 1 2 3 4 5 6 7 8 9 10 11 12
Coord Phases . . . X . . . X . . . . .
Veh Recall . . . . . . . . . . .
Veh Max Recall . . X . . . X . . . . .
Ped Recall . . . . . . . . . . .
Veh Omit . . . . . . . . . . .
Alt Sequence . . A: . B: . C: . D: . E: . F: .
-----
    
```


NIC Program Steps

Step	Program	Step Begins	Pattern	Override
1	1	0600	1	NO
2	1	0800	2	NO
3	1	1600	3	NO
4	1	1800	2	NO
5	2	0600	2	NO
6	2	1130	3	NO
7	2	1600	2	NO

TOD Program Steps

Step 1 Program 1 Step Begins 0600

Flash. Dimming Enable.
 Red Rest Alt Veh Extension
 Spare 5. Det Log Enable.
 Spare 3. Spare 4
 Type 0 Dly Enable. . . Spare 2
 Det Diag Plan. . . . 0

	Phase Number											
	1	2	3	4	5	6	7	8	9	10	11	12
Max 2 Enable
Max 3 Enable
Veh Recall
Veh Max Recall
Ped Recall
Cond Service Inhibit.
Phase Omit
Special Function

	A	B	C	D	E	F
Alt Sequence

Step 2 Program 1 Step Begins 0800

Flash. Dimming Enable.
 Red Rest Alt Veh Extension
 Spare 5. Det Log Enable.
 Spare 3. Spare 4
 Type 0 Dly Enable. . . Spare 2
 Det Diag Plan. . . . 0

	Phase Number											
	1	2	3	4	5	6	7	8	9	10	11	12
Max 2 Enable	X	X	.	X	X	X	.	X
Max 3 Enable
Veh Recall
Veh Max Recall
Ped Recall
Cond Service Inhibit.
Phase Omit
Special Function

	A	B	C	D	E	F
Alt Sequence

TOD Program Steps

 Step 3 Program 1 Step Begins 1600

Flash. Dimming Enable.
 Red Rest Alt Veh Extension
 Spare 5. Det Log Enable.
 Spare 3. Spare 4
 Type 0 Dly Enable. . . Spare 2
 Det Diag Plan. . . . 0

	Phase Number											
	1	2	3	4	5	6	7	8	9	10	11	12
Max 2 Enable
Max 3 Enable	X	X	.	X	X	X	.	X
Veh Recall
Veh Max Recall
Ped Recall
Cond Service Inhibit.
Phase Omit
Special Function

Alt Sequence A B C D E F

Step 4 Program 1 Step Begins 1800

Flash. Dimming Enable.
 Red Rest Alt Veh Extension
 Spare 5. Det Log Enable.
 Spare 3. Spare 4
 Type 0 Dly Enable. . . Spare 2
 Det Diag Plan. . . . 0

	Phase Number											
	1	2	3	4	5	6	7	8	9	10	11	12
Max 2 Enable	X	X	.	X	X	X	.	X
Max 3 Enable
Veh Recall
Veh Max Recall
Ped Recall
Cond Service Inhibit.
Phase Omit
Special Function

Alt Sequence A B C D E F

TOD Program Steps

Step 5 Program 2 Step Begins 0600

Flash. Dimming Enable.
Red Rest Alt Veh Extension
Spare 5. Det Log Enable.
Spare 3. Spare 4
Type 0 Dly Enable. . . Spare 2
Det Diag Plan. . . . 0

Table with 12 columns for Phase Number (1-12) and rows for Max 2 Enable, Max 3 Enable, Veh Recall, Veh Max Recall, Ped Recall, Cond Service Inhibit, Phase Omit, and Special Function.

Alt Sequence A B C D E F

Step 6 Program 2 Step Begins 1130

Flash. Dimming Enable.
Red Rest Alt Veh Extension
Spare 5. Det Log Enable.
Spare 3. Spare 4
Type 0 Dly Enable. . . Spare 2
Det Diag Plan. . . . 0

Table with 12 columns for Phase Number (1-12) and rows for Max 2 Enable, Max 3 Enable, Veh Recall, Veh Max Recall, Ped Recall, Cond Service Inhibit, Phase Omit, and Special Function.

Alt Sequence A B C D E F

TOD Program Steps

Step 7 Program 2 Step Begins 1600

Flash. Dimming Enable.
 Red Rest Alt Veh Extension
 Spare 5. Det Log Enable.
 Spare 3. Spare 4
 Type 0 Dly Enable. . . Spare 2
 Det Diag Plan. . . . 0

	Phase Number											
	1	2	3	4	5	6	7	8	9	10	11	12
Max 2 Enable	X	X	.	X	X	X	.	X
Max 3 Enable
Veh Recall
Veh Max Recall
Ped Recall
Cond Service Inhibit.
Phase Omit
Special Function

Alt Sequence A B C D E F

Step 9 Program 1 Step Begins 0000

Flash. Dimming Enable.
 Red Rest Alt Veh Extension
 Spare 5. Det Log Enable.
 Spare 3. Spare 4
 Type 0 Dly Enable. . . Spare 2
 Det Diag Plan. . . . 0

	Phase Number											
	1	2	3	4	5	6	7	8	9	10	11	12
Max 2 Enable
Max 3 Enable
Veh Recall
Veh Max Recall
Ped Recall
Cond Service Inhibit.
Phase Omit
Special Function

Alt Sequence A B C D E F

TOD Program Steps

Step 10 Program 2 Step Begins 0000

Flash.	Dimming Enable.
Red Rest	Alt Veh Extension
Spare 5.	Det Log Enable.
Spare 3.	Spare 4
Type 0 Dly Enable.	Spare 2
Det Diag Plan. 0	

Phase Number

	1	2	3	4	5	6	7	8	9	10	11	12
Max 2 Enable
Max 3 Enable
Veh Recall
Veh Max Recall
Ped Recall
Cond Service Inhibit.
Phase Omit
Special Function

A B C D E F

Alt Sequence
