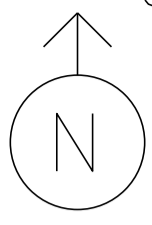


MS # 513



US-7 NORTH

CHAMPLAIN LANES

STOP BUS

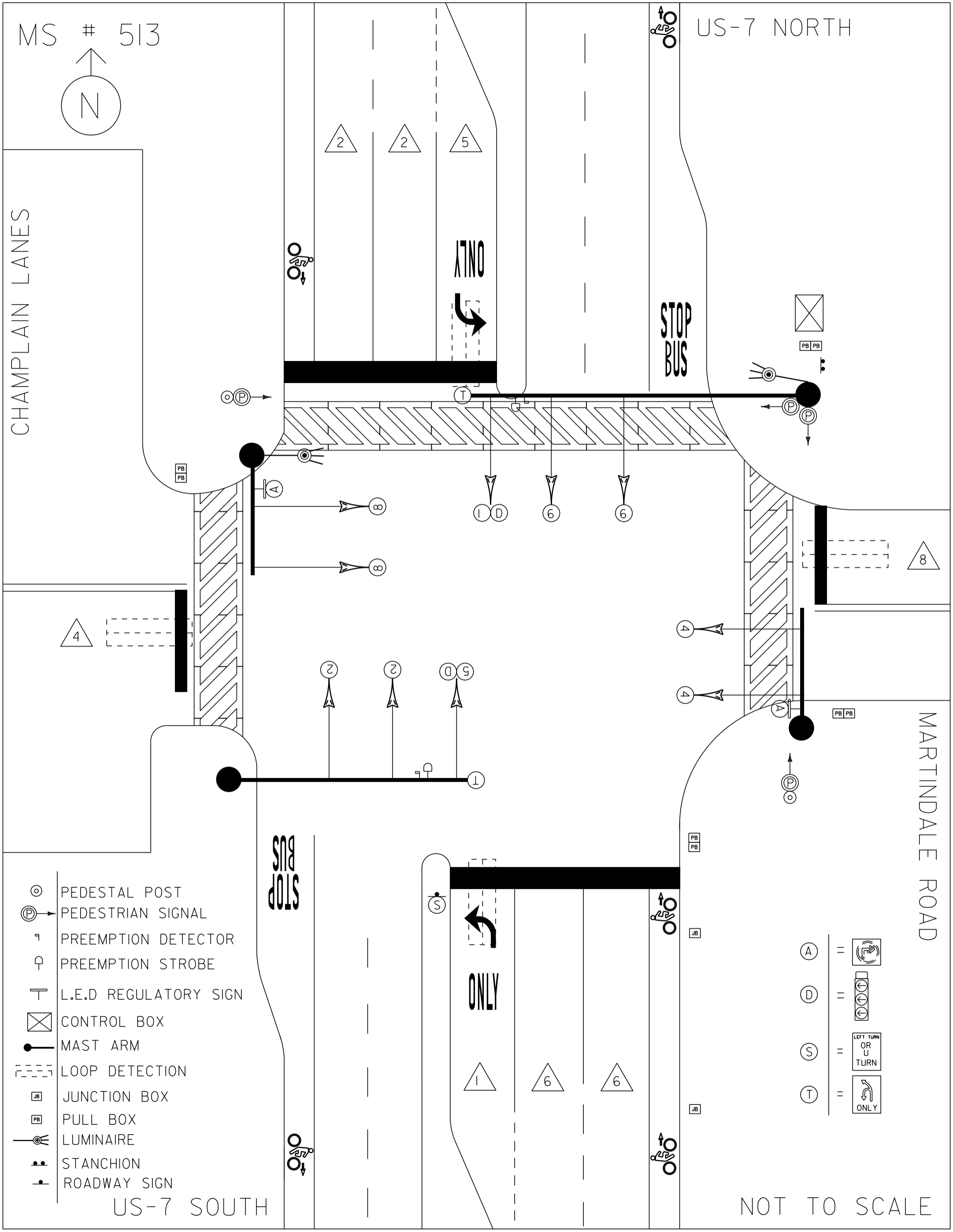
MARTINDALE ROAD

US-7 SOUTH

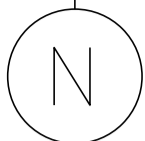
NOT TO SCALE

- ⊙ PEDESTAL POST
- Ⓟ PEDESTRIAN SIGNAL
- ⌚ PREEMPTION DETECTOR
- ⚡ PREEMPTION STROBE
- ⌚ L.E.D REGULATORY SIGN
- ☒ CONTROL BOX
- MAST ARM
- ⋯ LOOP DETECTION
- Ⓜ JUNCTION BOX
- Ⓟ PULL BOX
- ⌚ LUMINAIRE
- ⌚ STANCHION
- ⌚ ROADWAY SIGN

- (A) =
- (D) =
- (S) =
- (T) =



MS # 513



US-7 NORTH

CHAMPLAIN LANES



12'

11'

10'

12'

12'

LANE LINE 150'

LANE LINE 215'

ONLY



STOP
BUS

STOP BAR 39'

CROSSWALK 78'

STOP BAR 15'

12'

12'

15'

CROSSWALK 35'

STOP BAR 15'

CROSSWALK 58'

MARTINDALE ROAD

STOP BAR 39'

STOP
BUS



12'

12'

10'

11'

12'

6'

LANE LINE 155'

LANE LINE 105'

ONLY



US-7 SOUTH

NOT TO SCALE



PROPERTY OF :
VT. AGENCY OF TRANS.
MAINTENANCE DIV.
IN EMERGENCY CALL :
DIST. TRANS. OFFICE
655 - 1580 COLCHESTER
NIGHTS & WEEKENDS : 878-7111
INTERSECTION NO. MS-513

DANGER
115 VOLTS A.C.

WARNING
DO NOT OPERATE
CABINET WITHOUT
CMU / MMU

344107

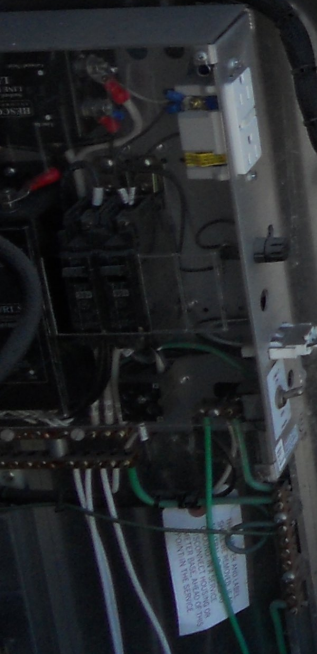
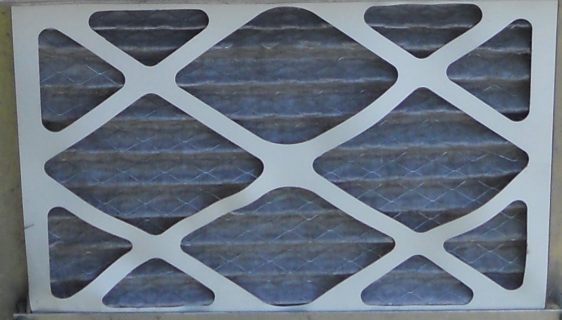


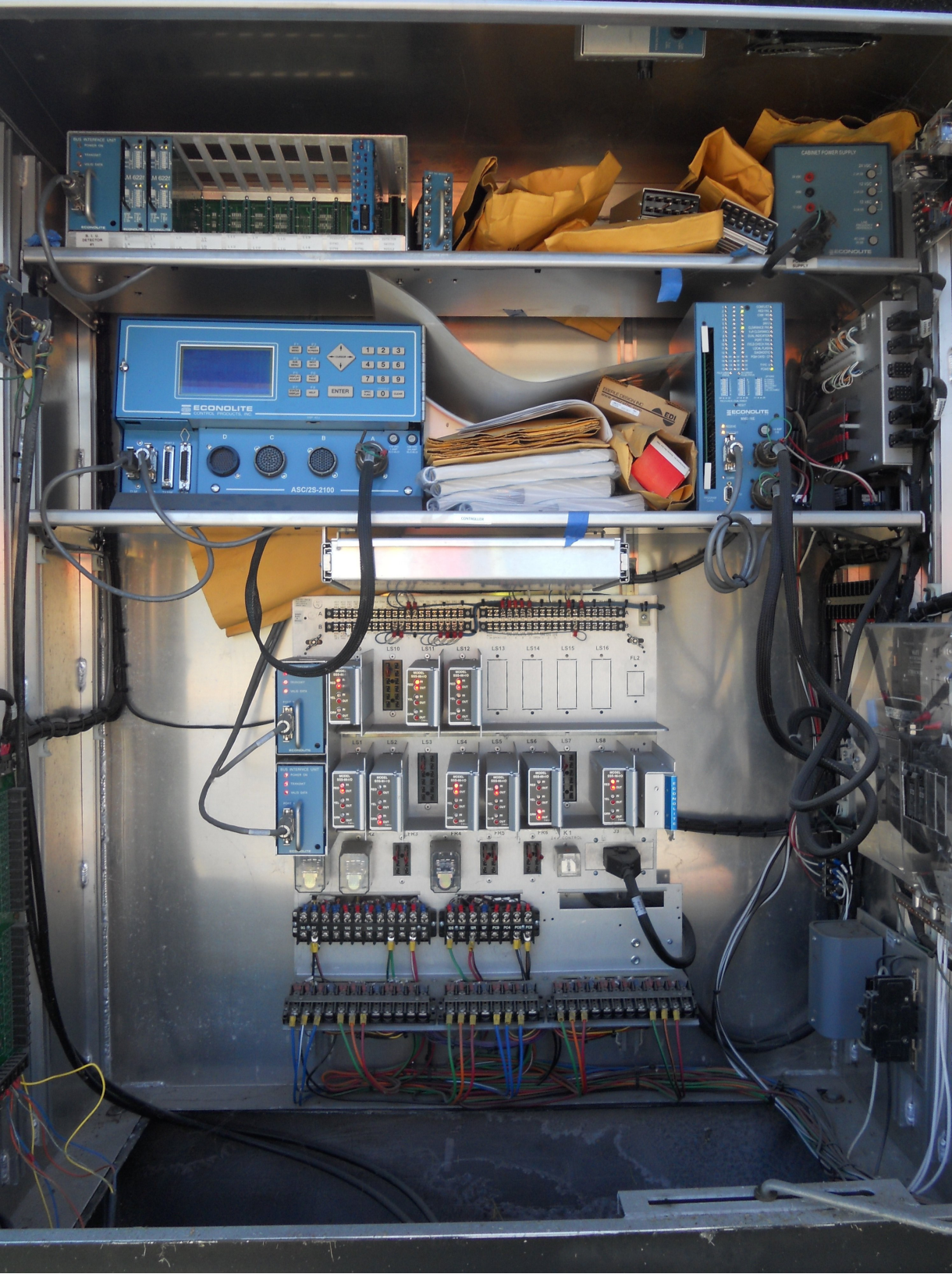
CONTROL EQUIP. ON
CONTROL EQUIP. OFF

AUTO
FLASH

STOP TURNING AUTO
STOP TURNING ON HIGH

ECONOLITE







ELESTER
KILOWATT HOURS
01M0126001
SINGLE-STATOR WATT-HOUR METER
TYPE AB1R S 7C320LCSAA
FORM 2S 200 CL 240 V 3 W 60 Hz TA 30 Kh 7.2
266 601
MADE IN U.S.A.
ACC026430461
26 430 461



DO NOT BREAK SEAL
NO FUSES INSIDE





SHELBURNE RD















250 / 320
/ SI / 5 GA
/ 280 / 7 GA





FRESH FISH MARKET
LOBSTERS
CLAMS
FISH
LUMBER
BIG BROS
FISH MARKET



LEFT TURN
OR
U
TURN

ALL-BOAT
EXCHANGE

ONLY



MARTINDALE RD





MARTINDALE RD

ONLY

d Air Express
OF NEW ENGLAND

↑

NO PARKING

BUS

Worker in high-visibility vest



15.00" / 32.0"
65KSI / .219"
3.0" / 49.0" / .25" / T





PIZZA

SHELBOURNE RD

PIZZA

SHELBURNE RD



LEGAL LOAD
LIMIT



SHELBURNE RD



LEGAL LOAD
LIMIT
24,000
POUNDS

SPEED LIMIT
25





12.50" / 20.0"
35KSI / 5.6
10.0" / 39.0" / 3.0"



ONLY

SMALL BOAT EXCHANGE



ONLY

TRAFFIC LIGHT SIGNALS

A...
AM - 4 PM



MARTINDALE RD

CHAMPLAIN LANES
FAMILY FUN CENTER
Bowling Game Room Pizza
Bar & Grille

STOP

Yield

Person in high-visibility vest



MARTINDALE RD



NO











MARTINDALE RD





15.00" / 20.0"
65 KSI / .219"
13.10" / 49.0" / 25" / 7 GA

Coordination Patterns

```

-----
Pattern 1
Cycle Length . . . 70  COS . . . . . 111
Offset . . . . . 56
Vehicle Permissive . . [1] 0 [2] 0
Vehicle Perm 2 Displacement 0 Phase Reservice. . NO
Splits: Phase 1- 14 2- 34 3- 0 4- 22
          Phase 5- 14 6- 34 7- 0 8- 22
          Phase 9- 0 10- 0 11- 0 12- 0 Split Sum: 0
Split Extension/Ring [1] 0 [2] 0
Split Demand Pattern [1] 0 [2] 0
XRT Pattern. . . 0
  Phase Number: 1 2 3 4 5 6 7 8 9 10 11 12
Coord Phases . . . X . . . X . . . . .
Veh Recall . . . . . . . . . . .
Veh Max Recall . . X . . . X . . . . .
Ped Recall . . . . . . . . . . .
Veh Omit . . . . . . . . . . .
Alt Sequence . . A: . B: . C: . D: . E: . F: .
-----
    
```

```

-----
Pattern 2
Cycle Length . . . 70  COS . . . . . 211
Offset . . . . . 7
Vehicle Permissive . . [1] 0 [2] 0
Vehicle Perm 2 Displacement 0 Phase Reservice. . NO
Splits: Phase 1- 14 2- 34 3- 0 4- 22
          Phase 5- 14 6- 34 7- 0 8- 22
          Phase 9- 0 10- 0 11- 0 12- 0 Split Sum: 0
Split Extension/Ring [1] 0 [2] 0
Split Demand Pattern [1] 0 [2] 0
XRT Pattern. . . 0
  Phase Number: 1 2 3 4 5 6 7 8 9 10 11 12
Coord Phases . . . X . . . X . . . . .
Veh Recall . . . . . . . . . . .
Veh Max Recall . . X . . . X . . . . .
Ped Recall . . . . . . . . . . .
Veh Omit . . . . . . . . . . .
Alt Sequence . . A: . B: . C: . D: . E: . F: .
-----
    
```

```

-----
Pattern 3
Cycle Length . . . 80  COS . . . . . 311
Offset . . . . . 12
Vehicle Permissive . . [1] 0 [2] 0
Vehicle Perm 2 Displacement 0 Phase Reservice. . NO
Splits: Phase 1- 14 2- 44 3- 0 4- 22
          Phase 5- 14 6- 44 7- 0 8- 22
          Phase 9- 0 10- 0 11- 0 12- 0 Split Sum: 0
Split Extension/Ring [1] 0 [2] 0
Split Demand Pattern [1] 0 [2] 0
XRT Pattern. . . 0
  Phase Number: 1 2 3 4 5 6 7 8 9 10 11 12
Coord Phases . . . X . . . X . . . . .
Veh Recall . . . . . . . . . . .
Veh Max Recall . . X . . . X . . . . .
Ped Recall . . . . . . . . . . .
Veh Omit . . . . . . . . . . .
Alt Sequence . . A: . B: . C: . D: . E: . F: .
-----
    
```


NIC Program Steps

Step	Program	Step Begins	Pattern	Override
1	1	0600	1	NO
2	1	0800	2	NO
3	1	1600	3	NO
4	1	1800	2	NO
5	2	0600	2	NO
6	2	1130	3	NO
7	2	1600	2	NO

TOD Program Steps

Step 1 Program 1 Step Begins 0600

Flash. Dimming Enable.
Red Rest Alt Veh Extension
Spare 5. Det Log Enable.
Spare 3. Spare 4
Type 0 Dly Enable. . . Spare 2
Det Diag Plan. . . . 0

	Phase Number											
	1	2	3	4	5	6	7	8	9	10	11	12
Max 2 Enable
Max 3 Enable
Veh Recall
Veh Max Recall
Ped Recall
Cond Service Inhibit.
Phase Omit
Special Function

Alt Sequence A B C D E F

Step 2 Program 1 Step Begins 0800

Flash. Dimming Enable.
Red Rest Alt Veh Extension
Spare 5. Det Log Enable.
Spare 3. Spare 4
Type 0 Dly Enable. . . Spare 2
Det Diag Plan. . . . 0

	Phase Number											
	1	2	3	4	5	6	7	8	9	10	11	12
Max 2 Enable	X	X	.	X	X	X	.	X
Max 3 Enable
Veh Recall
Veh Max Recall
Ped Recall
Cond Service Inhibit.
Phase Omit
Special Function

Alt Sequence A B C D E F

TOD Program Steps

 Step 3 Program 1 Step Begins 1600

Flash. Dimming Enable.
 Red Rest Alt Veh Extension
 Spare 5. Det Log Enable.
 Spare 3. Spare 4
 Type 0 Dly Enable. . . Spare 2
 Det Diag Plan. . . . 0

	Phase Number											
	1	2	3	4	5	6	7	8	9	10	11	12
Max 2 Enable
Max 3 Enable	X	X	.	X	X	X	.	X
Veh Recall
Veh Max Recall
Ped Recall
Cond Service Inhibit.
Phase Omit
Special Function

Alt Sequence A B C D E F

Step 4 Program 1 Step Begins 1800

Flash. Dimming Enable.
 Red Rest Alt Veh Extension
 Spare 5. Det Log Enable.
 Spare 3. Spare 4
 Type 0 Dly Enable. . . Spare 2
 Det Diag Plan. . . . 0

	Phase Number											
	1	2	3	4	5	6	7	8	9	10	11	12
Max 2 Enable	X	X	.	X	X	X	.	X
Max 3 Enable
Veh Recall
Veh Max Recall
Ped Recall
Cond Service Inhibit.
Phase Omit
Special Function

Alt Sequence A B C D E F

TOD Program Steps

Step 5 Program 2 Step Begins 0600

Flash. Dimming Enable.
Red Rest Alt Veh Extension
Spare 5. Det Log Enable.
Spare 3. Spare 4
Type 0 Dly Enable. . . Spare 2
Det Diag Plan. . . . 0

Table with 12 columns (Phase Number 1-12) and rows for Max 2 Enable, Max 3 Enable, Veh Recall, Veh Max Recall, Ped Recall, Cond Service Inhibit, Phase Omit, and Special Function.

Alt Sequence A B C D E F

Step 6 Program 2 Step Begins 1130

Flash. Dimming Enable.
Red Rest Alt Veh Extension
Spare 5. Det Log Enable.
Spare 3. Spare 4
Type 0 Dly Enable. . . Spare 2
Det Diag Plan. . . . 0

Table with 12 columns (Phase Number 1-12) and rows for Max 2 Enable, Max 3 Enable, Veh Recall, Veh Max Recall, Ped Recall, Cond Service Inhibit, Phase Omit, and Special Function.

Alt Sequence A B C D E F

TOD Program Steps

Step 7 Program 2 Step Begins 1600

Flash. Dimming Enable.
 Red Rest Alt Veh Extension
 Spare 5. Det Log Enable.
 Spare 3. Spare 4
 Type 0 Dly Enable. . . Spare 2
 Det Diag Plan. . . . 0

	Phase Number											
	1	2	3	4	5	6	7	8	9	10	11	12
Max 2 Enable	X	X	.	X	X	X	.	X
Max 3 Enable
Veh Recall
Veh Max Recall
Ped Recall
Cond Service Inhibit.
Phase Omit
Special Function

Alt Sequence A B C D E F

Step 9 Program 1 Step Begins 0000

Flash. Dimming Enable.
 Red Rest Alt Veh Extension
 Spare 5. Det Log Enable.
 Spare 3. Spare 4
 Type 0 Dly Enable. . . Spare 2
 Det Diag Plan. . . . 0

	Phase Number											
	1	2	3	4	5	6	7	8	9	10	11	12
Max 2 Enable
Max 3 Enable
Veh Recall
Veh Max Recall
Ped Recall
Cond Service Inhibit.
Phase Omit
Special Function

Alt Sequence A B C D E F

TOD Program Steps

Step 10 Program 2 Step Begins 0000

Flash. Dimming Enable.
 Red Rest Alt Veh Extension
 Spare 5. Det Log Enable.
 Spare 3. Spare 4
 Type 0 Dly Enable. . . Spare 2
 Det Diag Plan. . . . 0

	Phase Number											
	1	2	3	4	5	6	7	8	9	10	11	12
Max 2 Enable
Max 3 Enable
Veh Recall
Veh Max Recall
Ped Recall
Cond Service Inhibit.
Phase Omit
Special Function

Alt Sequence A B C D E F
