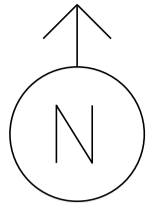


MS # 512



US-7 NORTH

LAKEVIEW DRIVE

STOP BUS

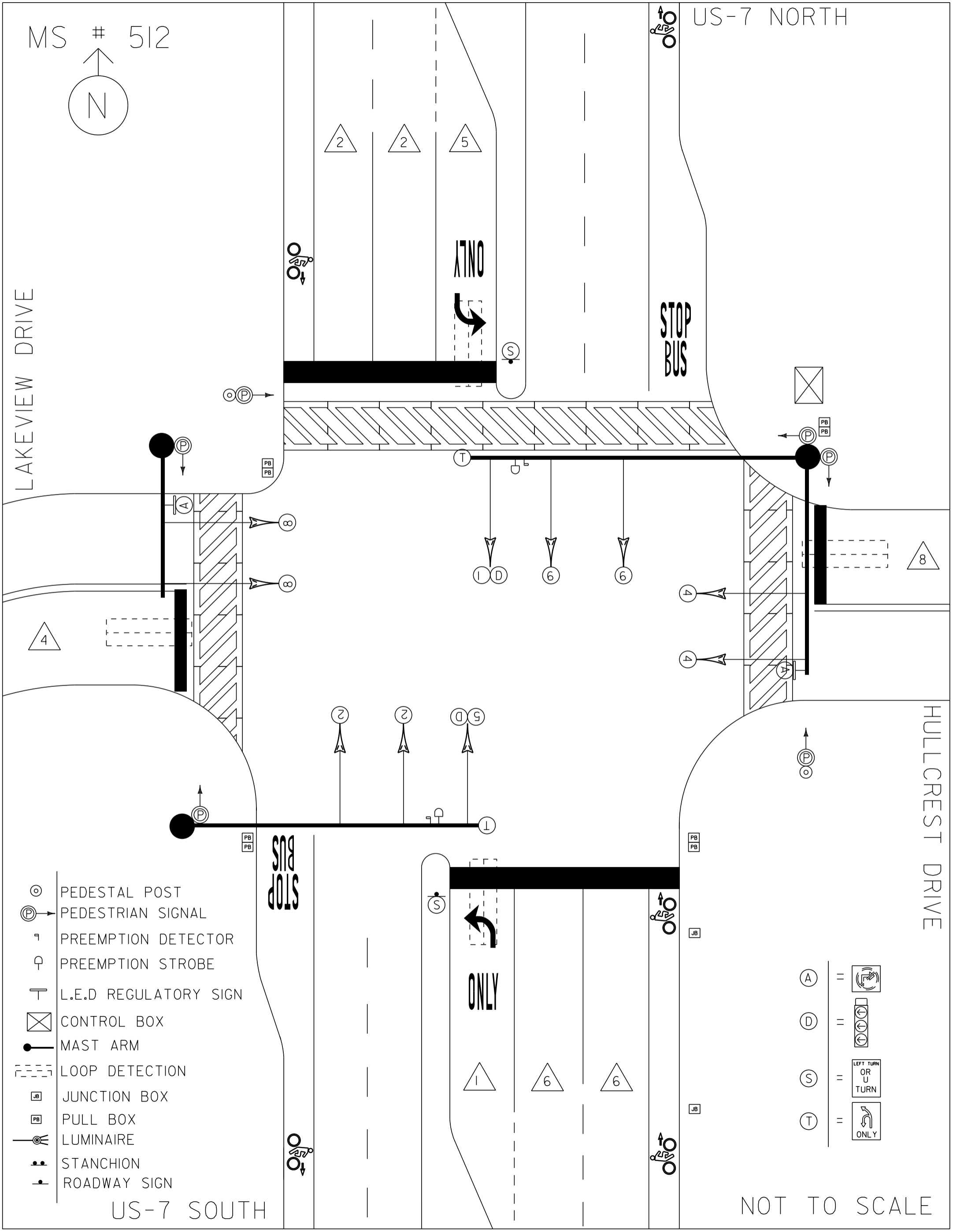
HULLCREST DRIVE

- ⊙ PEDESTAL POST
- Ⓟ PEDESTRIAN SIGNAL
- ⌚ PREEMPTION DETECTOR
- ⚡ PREEMPTION STROBE
- ⊣ L.E.D REGULATORY SIGN
- ⊠ CONTROL BOX
- MAST ARM
- - - LOOP DETECTION
- ⊠ JUNCTION BOX
- Ⓜ PULL BOX
- ⦿ LUMINAIRE
- ⋮ STANCHION
- ⌣ ROADWAY SIGN

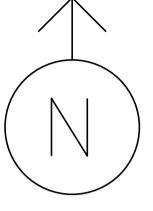
- Ⓐ =
- Ⓓ =
- Ⓢ =
- Ⓙ =

US-7 SOUTH

NOT TO SCALE

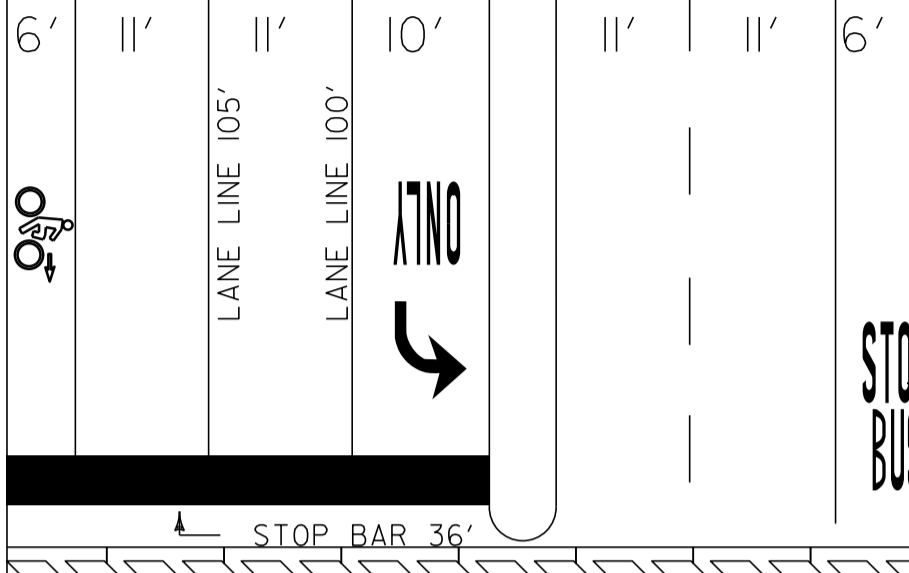


MS # 512



US-7 NORTH

LAKEVIEW DRIVE



STOP BAR 36'

CROSSWALK 80'

12'

12'

CROSSWALK 70'

STOP BAR 23'

STOP BAR 18'

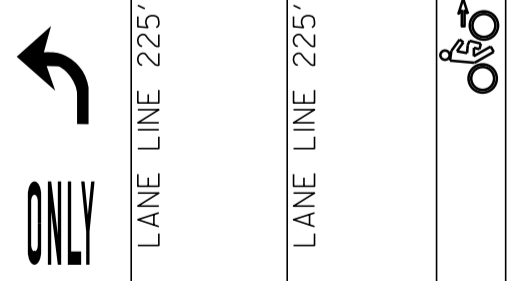
CROSSWALK 59'

14'

13'

STOP BUS

STOP BAR 39'

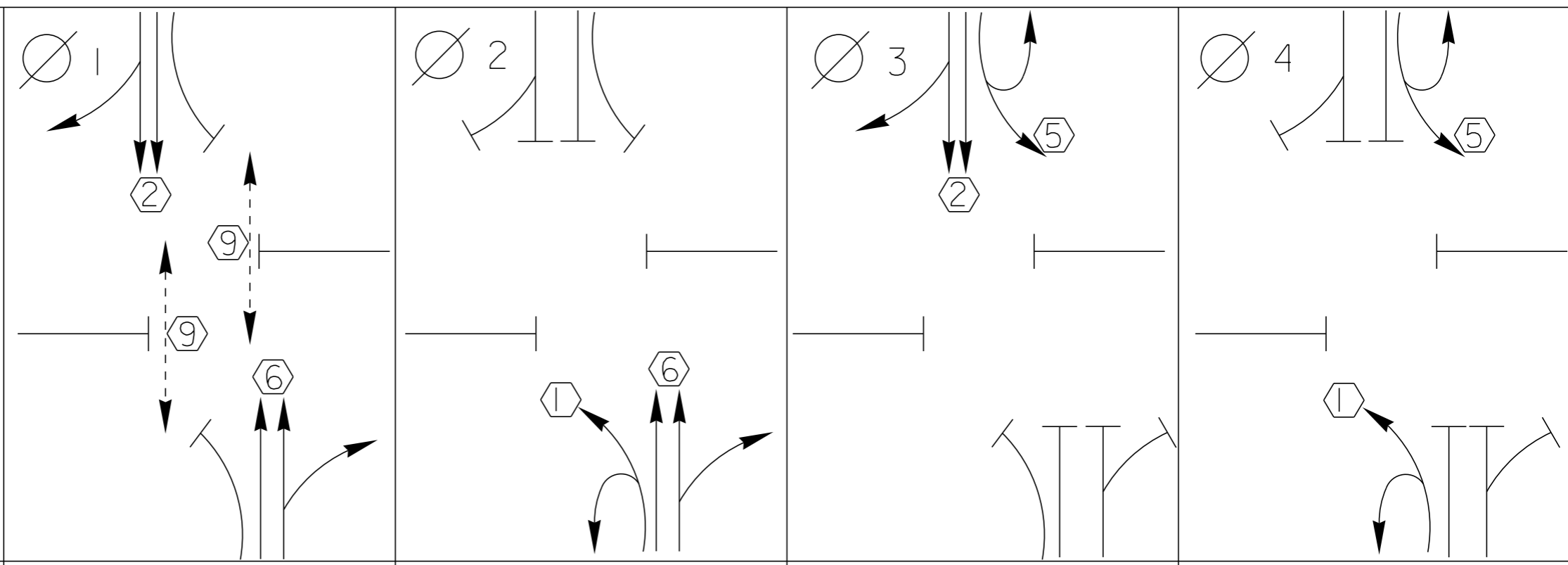


HULLCREST DRIVE

US-7 SOUTH

NOT TO SCALE

D I A G R A M



TIMING

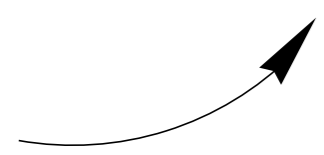
G =
Y =

D I A G R A M

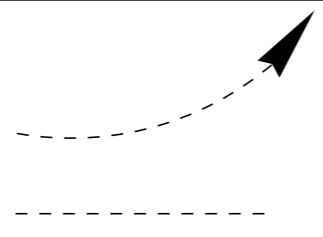


TIMING

G =
Y =



PROTECTED
TURNS



PERMITTED
TURNS
PEDESTRIAN

CYCLE LENGTH, C= _____ S



PROPERTY OF :
VT. AGENCY OF TRANS.
MAINTENANCE DIV.
IN EMERGENCY CALL :
DIST. TRANS. OFFICE
655 - 1580 COLCHESTER
NIGHTS & WEEKENDS : 878-7111
INTERSECTION NO. MS-512

DANGER

115 VOLTS A.C.

WARNING

DO NOT OPERATE
CABINET WITHOUT
CMU / MMU

CONTROL EQUIP ON

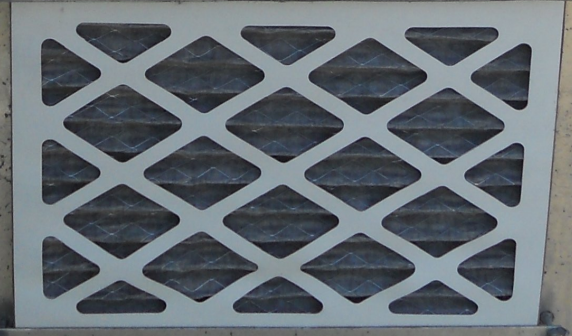
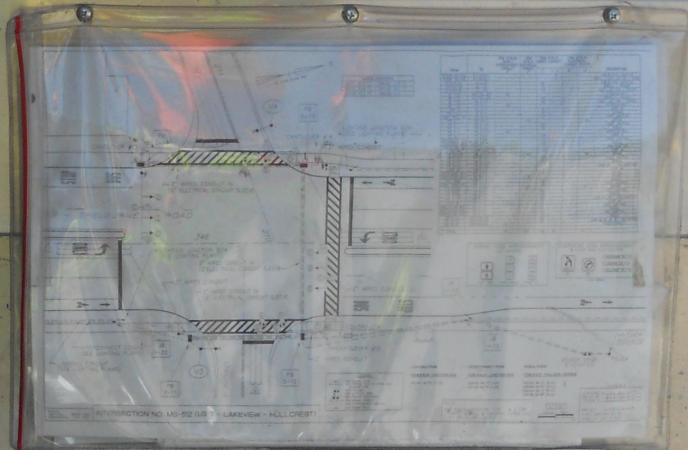
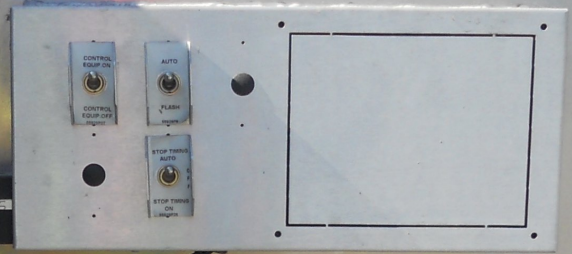
CONTROL EQUIP OFF

AUTO

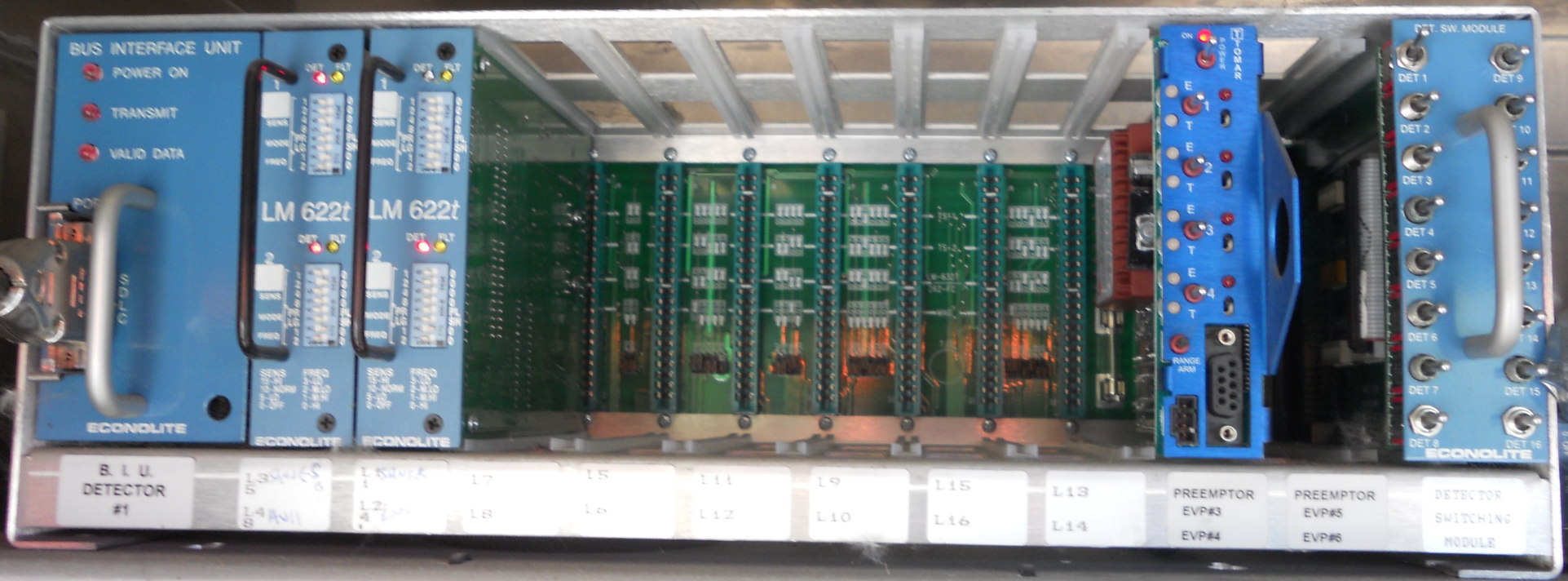
FLASH

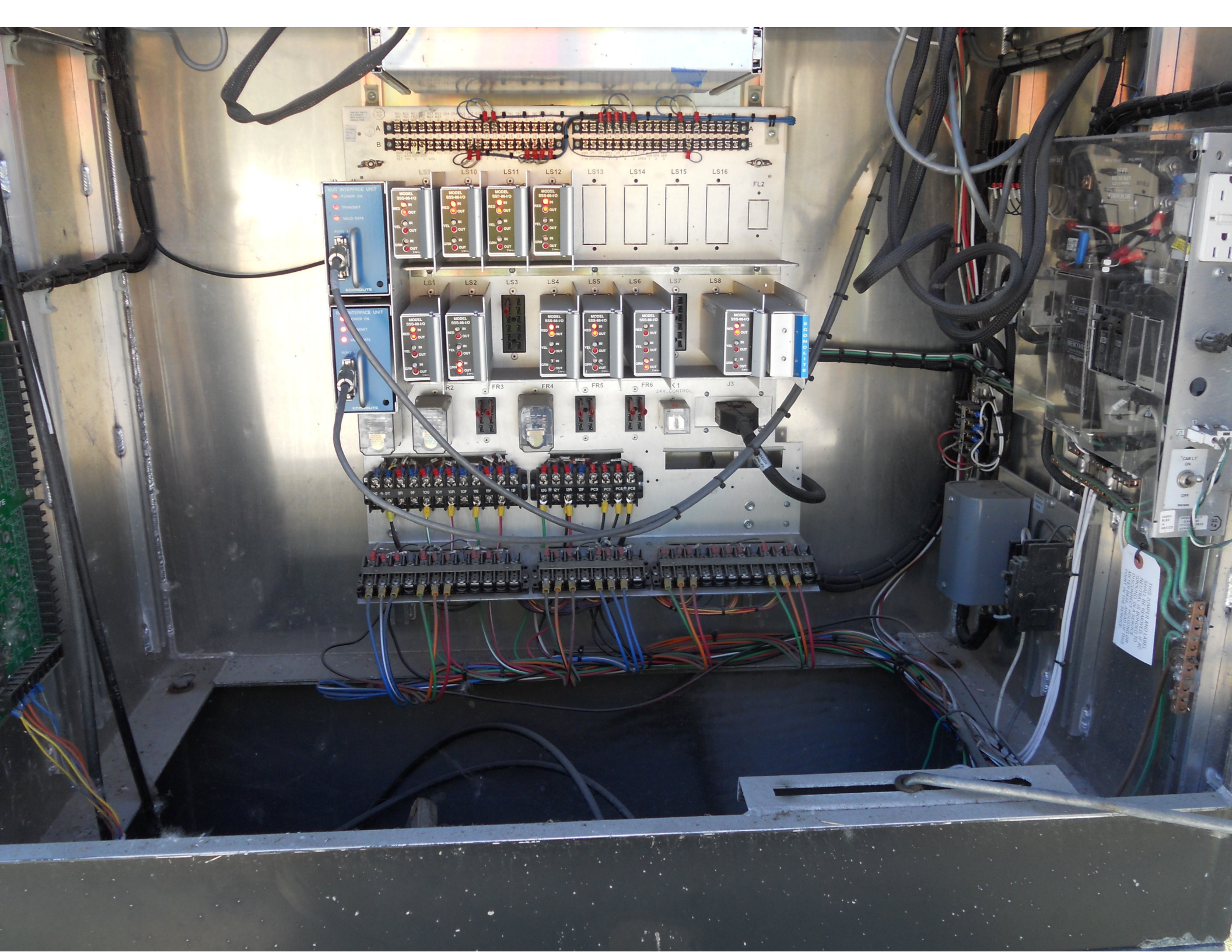
STOP TRAFFIC AUTO

STOP TRAFFIC OFF



DO NOT OPERATE THIS EQUIPMENT WITHOUT THE PROPER TRAINING AND CERTIFICATION. ALL WORK MUST BE DONE IN ACCORDANCE WITH THE MANUFACTURER'S INSTRUCTIONS.





A
B

LS1 LS10 LS11 LS12 LS13 LS14 LS15 LS16 FL2

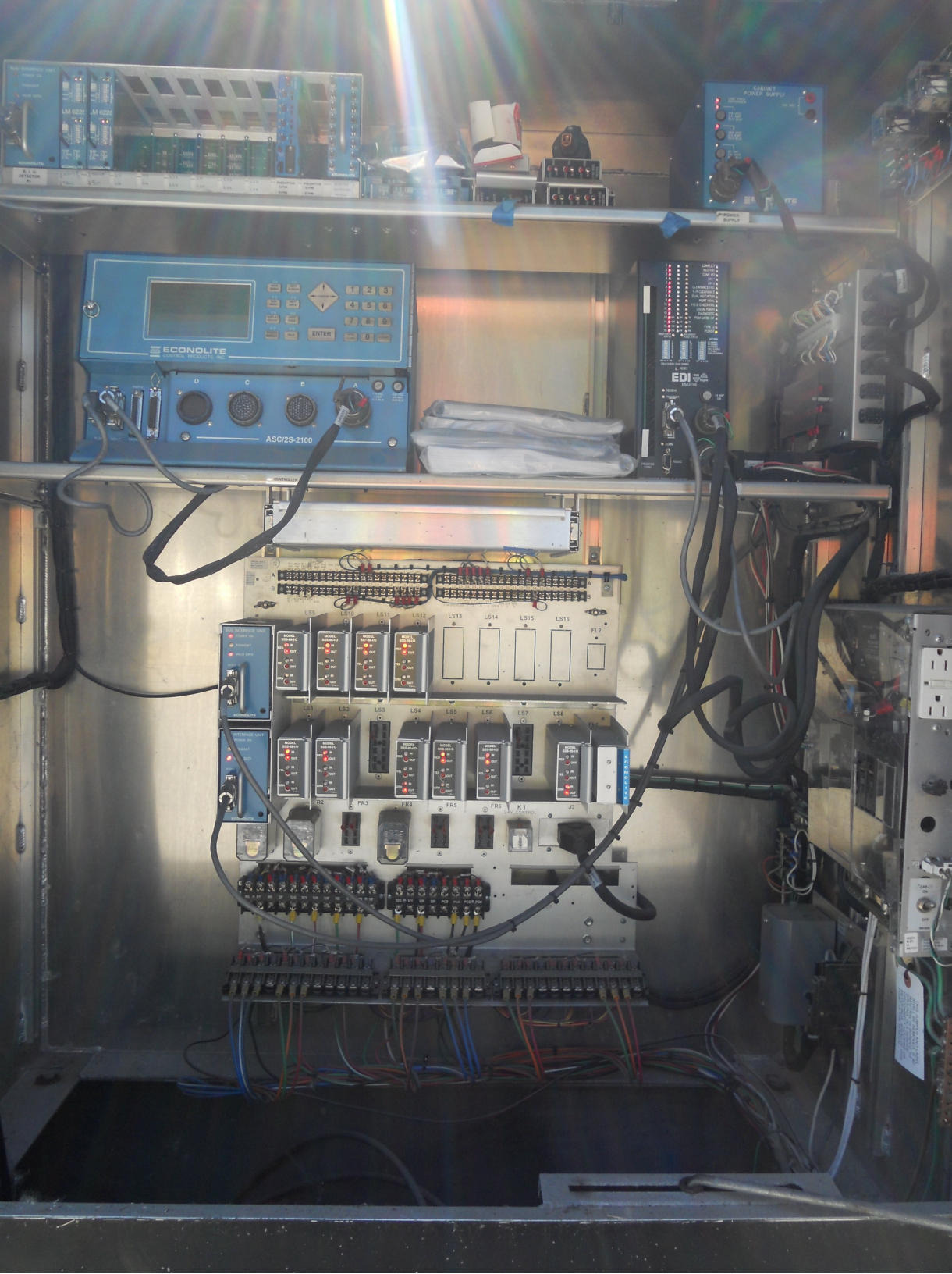
LS1 LS2 LS3 LS4 LS5 LS6 LS7 LS8

R2 FR3 FR4 FR5 FR6 K1 J3

BY BR BF BOC BOY BOF BSG BTF
C1 C2 C3 C4 C5 C6 C7 C8 C9 C10 C11 C12 C13 C14 C15 C16 C17 C18 C19 C20 C21 C22 C23 C24 C25 C26 C27 C28 C29 C30 C31 C32 C33 C34 C35 C36 C37 C38 C39 C40 C41 C42 C43 C44 C45 C46 C47 C48 C49 C50 C51 C52 C53 C54 C55 C56 C57 C58 C59 C60 C61 C62 C63 C64 C65 C66 C67 C68 C69 C70 C71 C72 C73 C74 C75 C76 C77 C78 C79 C80 C81 C82 C83 C84 C85 C86 C87 C88 C89 C90 C91 C92 C93 C94 C95 C96 C97 C98 C99 C100

1 2 3 4 5 6 7 8 9 10 11 12 13 14 15 16 17 18 19 20 21 22 23 24 25 26 27 28 29 30 31 32 33 34 35 36 37 38 39 40 41 42 43 44 45 46 47 48 49 50 51 52 53 54 55 56 57 58 59 60 61 62 63 64 65 66 67 68 69 70 71 72 73 74 75 76 77 78 79 80 81 82 83 84 85 86 87 88 89 90 91 92 93 94 95 96 97 98 99 100

Handwritten label with illegible text.







LIGHTING HOUSE

SHELburne Rd



THE LIGHTING HOUSE

SHELBURNE RD

HULLCREE

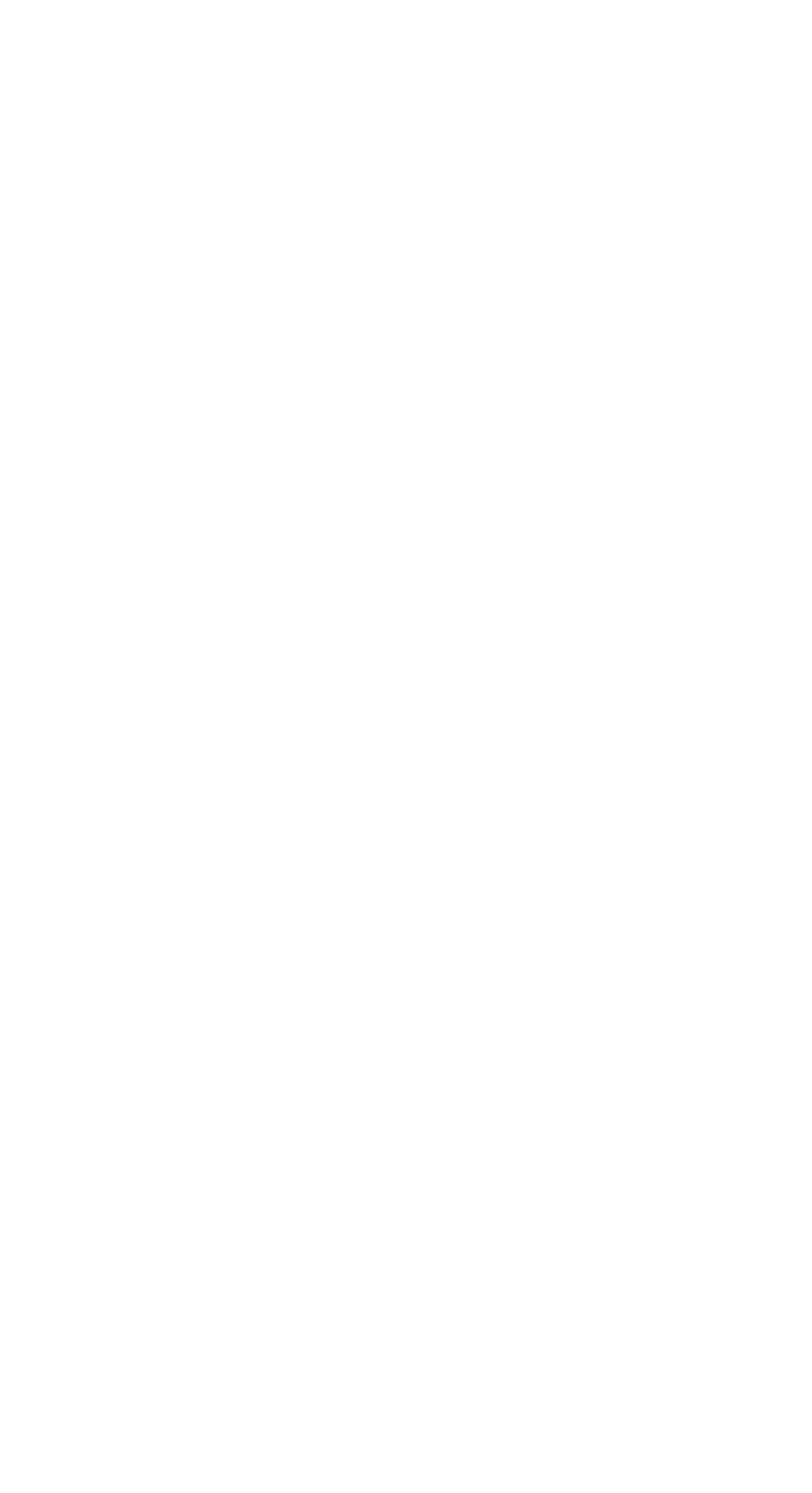
SHELBURNE RD













SHELBURNE RD



NO
OUTLET

25



87



12.50" / 20.0"
55KSI / 5 GA
300" / 28.0" / 7.0"





ONLY

LAKEVIEW DR

LEFT TURN
OR
U
TURN

HULLCREST DR



400





HULLCREST RD



TRUCK
U-TURN
1/4 MILES
AHEAD

NO
PARKING
IN
BUS LANE



HULLCREST RD

SHELBU...



RIGHT TURN ONLY

NO PARKING

WALKWAY



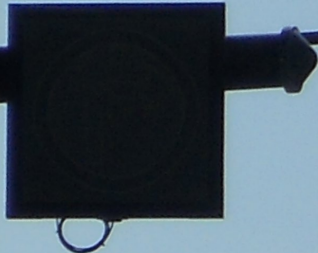
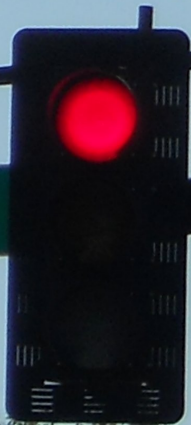
11/10/10
11/10/10
11/10/10
11/10/10

16.00" / 32.0"
65 KSI / .25"
13.10" / 49.0" / .25" / 7 GA
12.00" / 36.0" / 7 GA





SHELBURNE RD



ONLY

ULLCREST RD

SHELBURNE RD

SHELBURNE EYEWORKS

FLATBREAD FACTORY

BREUGGER'S BAGELS













MULLETT ST

MULLETT ST

ONLY





HULLCREST RD

LAKEVIEW DR

LEFT TURN
OR
U
TURN

THE SPORTING
HOUSE
PORCH STUDIO

BIKE



LAKEVIEW DR













LAKEVIEW DR



HOME

NO PARKING IN BUS LANE

ONE WAY

THE LIGHTING HOUSE PORCH & PATIO

OPEN

STOP BUS

THE LIGHTING HOUSE





15.00" / 32.0"
65KSI / 219"
13.10" / 49.0" / 25"

Coordination Patterns

```

-----
Pattern 1
Cycle Length . . . 70  COS . . . . . 111
Offset . . . . . 25
Vehicle Permissive . . [1] 0 [2] 0
Vehicle Perm 2 Displacement 0 Phase Reservice. . NO
Splits: Phase 1- 14 2- 34 3- 0 4- 22
          Phase 5- 14 6- 34 7- 0 8- 22
          Phase 9- 0 10- 0 11- 0 12- 0 Split Sum: 0
Split Extension/Ring [1] 0 [2] 0
Split Demand Pattern [1] 0 [2] 0
XRT Pattern. . . 0
  Phase Number: 1 2 3 4 5 6 7 8 9 10 11 12
Coord Phases . . . X . . . X . . . . .
Veh Recall . . . . . . . . . . .
Veh Max Recall . . X . . X . . . . .
Ped Recall . . . . . . . . . . .
Veh Omit . . . . . . . . . . .
Alt Sequence . . A: . B: . C: . D: . E: . F: .
-----
    
```

```

-----
Pattern 2
Cycle Length . . . 70  COS . . . . . 211
Offset . . . . . 43
Vehicle Permissive . . [1] 0 [2] 0
Vehicle Perm 2 Displacement 0 Phase Reservice. . NO
Splits: Phase 1- 14 2- 34 3- 0 4- 22
          Phase 5- 14 6- 34 7- 0 8- 22
          Phase 9- 0 10- 0 11- 0 12- 0 Split Sum: 0
Split Extension/Ring [1] 0 [2] 0
Split Demand Pattern [1] 0 [2] 0
XRT Pattern. . . 0
  Phase Number: 1 2 3 4 5 6 7 8 9 10 11 12
Coord Phases . . . X . . . X . . . . .
Veh Recall . . . . . . . . . . .
Veh Max Recall . . X . . X . . . . .
Ped Recall . . . . . . . . . . .
Veh Omit . . . . . . . . . . .
Alt Sequence . . A: . B: . C: . D: . E: . F: .
-----
    
```

```

-----
Pattern 3
Cycle Length . . . 80  COS . . . . . 311
Offset . . . . . 64
Vehicle Permissive . . [1] 0 [2] 0
Vehicle Perm 2 Displacement 0 Phase Reservice. . NO
Splits: Phase 1- 17 2- 41 3- 0 4- 22
          Phase 5- 17 6- 41 7- 0 8- 22
          Phase 9- 0 10- 0 11- 0 12- 0 Split Sum: 0
Split Extension/Ring [1] 0 [2] 0
Split Demand Pattern [1] 0 [2] 0
XRT Pattern. . . 0
  Phase Number: 1 2 3 4 5 6 7 8 9 10 11 12
Coord Phases . . . X . . . X . . . . .
Veh Recall . . . . . . . . . . .
Veh Max Recall . . X . . X . . . . .
Ped Recall . . . . . . . . . . .
Veh Omit . . . . . . . . . . .
Alt Sequence . . A: . B: . C: . D: . E: . F: .
-----
    
```


NIC Program Steps

Step	Program	Step Begins	Pattern	Override
1	1	0600	1	NO
2	1	0800	2	NO
3	1	1600	3	NO
4	1	1800	2	NO
5	2	0600	2	NO
6	2	1130	3	NO
7	2	1600	2	NO

TOD Program Steps

Step 1 Program 1 Step Begins 0600

Flash. Dimming Enable.
 Red Rest Alt Veh Extension
 Spare 5. Det Log Enable.
 Spare 3. Spare 4
 Type 0 Dly Enable. . . Spare 2
 Det Diag Plan. . . . 0

	Phase Number											
	1	2	3	4	5	6	7	8	9	10	11	12
Max 2 Enable
Max 3 Enable
Veh Recall
Veh Max Recall
Ped Recall
Cond Service Inhibit.
Phase Omit
Special Function

Alt Sequence A B C D E F

Step 2 Program 1 Step Begins 0800

Flash. Dimming Enable.
 Red Rest Alt Veh Extension
 Spare 5. Det Log Enable.
 Spare 3. Spare 4
 Type 0 Dly Enable. . . Spare 2
 Det Diag Plan. . . . 0

	Phase Number											
	1	2	3	4	5	6	7	8	9	10	11	12
Max 2 Enable	X	X	.	X	X	X	.	X
Max 3 Enable
Veh Recall
Veh Max Recall
Ped Recall
Cond Service Inhibit.
Phase Omit
Special Function

Alt Sequence A B C D E F

TOD Program Steps

 Step 3 Program 1 Step Begins 1600

Flash. Dimming Enable.
 Red Rest Alt Veh Extension
 Spare 5. Det Log Enable.
 Spare 3. Spare 4
 Type 0 Dly Enable. . . Spare 2
 Det Diag Plan. . . . 0

	Phase Number											
	1	2	3	4	5	6	7	8	9	10	11	12
Max 2 Enable
Max 3 Enable	X	X	.	X	X	X	.	X
Veh Recall
Veh Max Recall
Ped Recall
Cond Service Inhibit.
Phase Omit
Special Function

Alt Sequence A B C D E F

Step 4 Program 1 Step Begins 1800

Flash. Dimming Enable.
 Red Rest Alt Veh Extension
 Spare 5. Det Log Enable.
 Spare 3. Spare 4
 Type 0 Dly Enable. . . Spare 2
 Det Diag Plan. . . . 0

	Phase Number											
	1	2	3	4	5	6	7	8	9	10	11	12
Max 2 Enable	X	X	.	X	X	X	.	X
Max 3 Enable
Veh Recall
Veh Max Recall
Ped Recall
Cond Service Inhibit.
Phase Omit
Special Function

Alt Sequence A B C D E F

TOD Program Steps

 Step 5 Program 2 Step Begins 0600

Flash. Dimming Enable.
 Red Rest Alt Veh Extension
 Spare 5. Det Log Enable.
 Spare 3. Spare 4
 Type 0 Dly Enable. . . Spare 2
 Det Diag Plan. . . . 0

	Phase Number											
	1	2	3	4	5	6	7	8	9	10	11	12
Max 2 Enable	X	X	.	X	X	X	.	X
Max 3 Enable
Veh Recall
Veh Max Recall
Ped Recall
Cond Service Inhibit.
Phase Omit
Special Function

Alt Sequence A B C D E F

Step 6 Program 2 Step Begins 1130

Flash. Dimming Enable.
 Red Rest Alt Veh Extension
 Spare 5. Det Log Enable.
 Spare 3. Spare 4
 Type 0 Dly Enable. . . Spare 2
 Det Diag Plan. . . . 0

	Phase Number											
	1	2	3	4	5	6	7	8	9	10	11	12
Max 2 Enable
Max 3 Enable	X	X	.	X	X	X	.	X
Veh Recall
Veh Max Recall
Ped Recall
Cond Service Inhibit.
Phase Omit
Special Function

Alt Sequence A B C D E F

TOD Program Steps

 Step 7 Program 2 Step Begins 1600

Flash. Dimming Enable.
 Red Rest Alt Veh Extension
 Spare 5. Det Log Enable.
 Spare 3. Spare 4
 Type 0 Dly Enable. . . Spare 2
 Det Diag Plan. . . . 0

	Phase Number											
	1	2	3	4	5	6	7	8	9	10	11	12
Max 2 Enable	X	X	.	X	X	X	.	X
Max 3 Enable
Veh Recall
Veh Max Recall
Ped Recall
Cond Service Inhibit.
Phase Omit
Special Function

Alt Sequence A B C D E F

Step 9 Program 1 Step Begins 0000

Flash. Dimming Enable.
 Red Rest Alt Veh Extension
 Spare 5. Det Log Enable.
 Spare 3. Spare 4
 Type 0 Dly Enable. . . Spare 2
 Det Diag Plan. . . . 0

	Phase Number											
	1	2	3	4	5	6	7	8	9	10	11	12
Max 2 Enable
Max 3 Enable
Veh Recall
Veh Max Recall
Ped Recall
Cond Service Inhibit.
Phase Omit
Special Function

Alt Sequence A B C D E F

TOD Program Steps

Step 10 Program 2 Step Begins 0000

Flash.	Dimming Enable.
Red Rest	Alt Veh Extension
Spare 5.	Det Log Enable.
Spare 3.	Spare 4
Type 0 Dly Enable.	Spare 2
Det Diag Plan. 0	

	Phase Number											
	1	2	3	4	5	6	7	8	9	10	11	12
Max 2 Enable
Max 3 Enable
Veh Recall
Veh Max Recall
Ped Recall
Cond Service Inhibit.
Phase Omit
Special Function

	A	B	C	D	E	F
Alt Sequence
