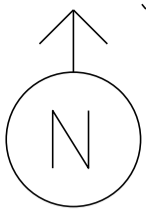


MS # 508

US-7 NORTH



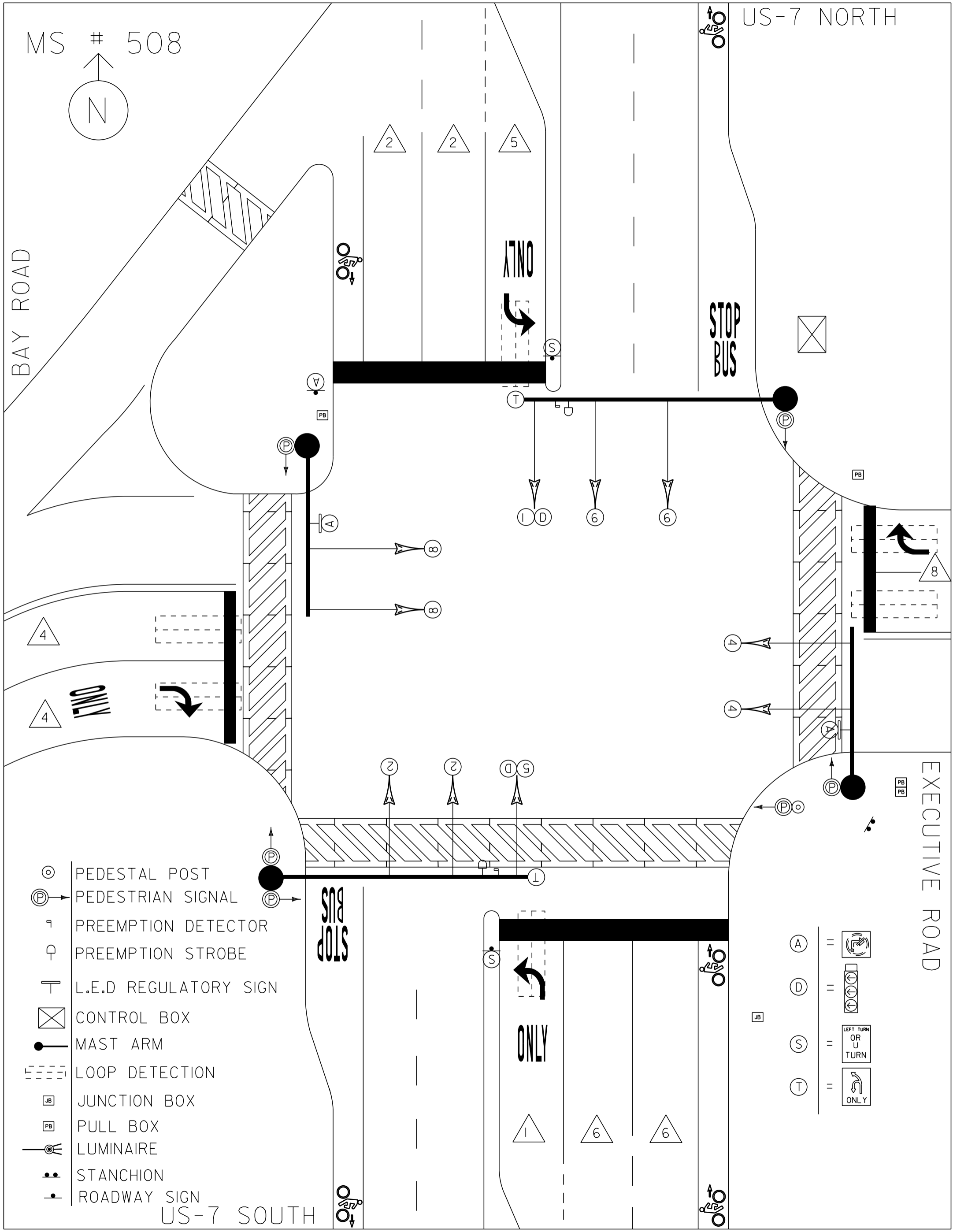
BAY ROAD

EXECUTIVE ROAD

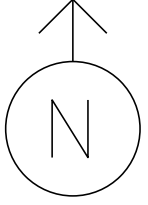
US-7 SOUTH

- ⊙ PEDESTAL POST
- Ⓟ PEDESTRIAN SIGNAL
- ∩ PREEMPTION DETECTOR
- ♀ PREEMPTION STROBE
- ⊥ L.E.D REGULATORY SIGN
- ⊠ CONTROL BOX
- MAST ARM
- - - LOOP DETECTION
- Ⓜ JUNCTION BOX
- Ⓟ PULL BOX
- ⦿ LUMINAIRE
- ⦿ STANCHION
- ⦿ ROADWAY SIGN

- Ⓜ =
- Ⓟ =
- Ⓢ =
- Ⓣ =



MS # 508

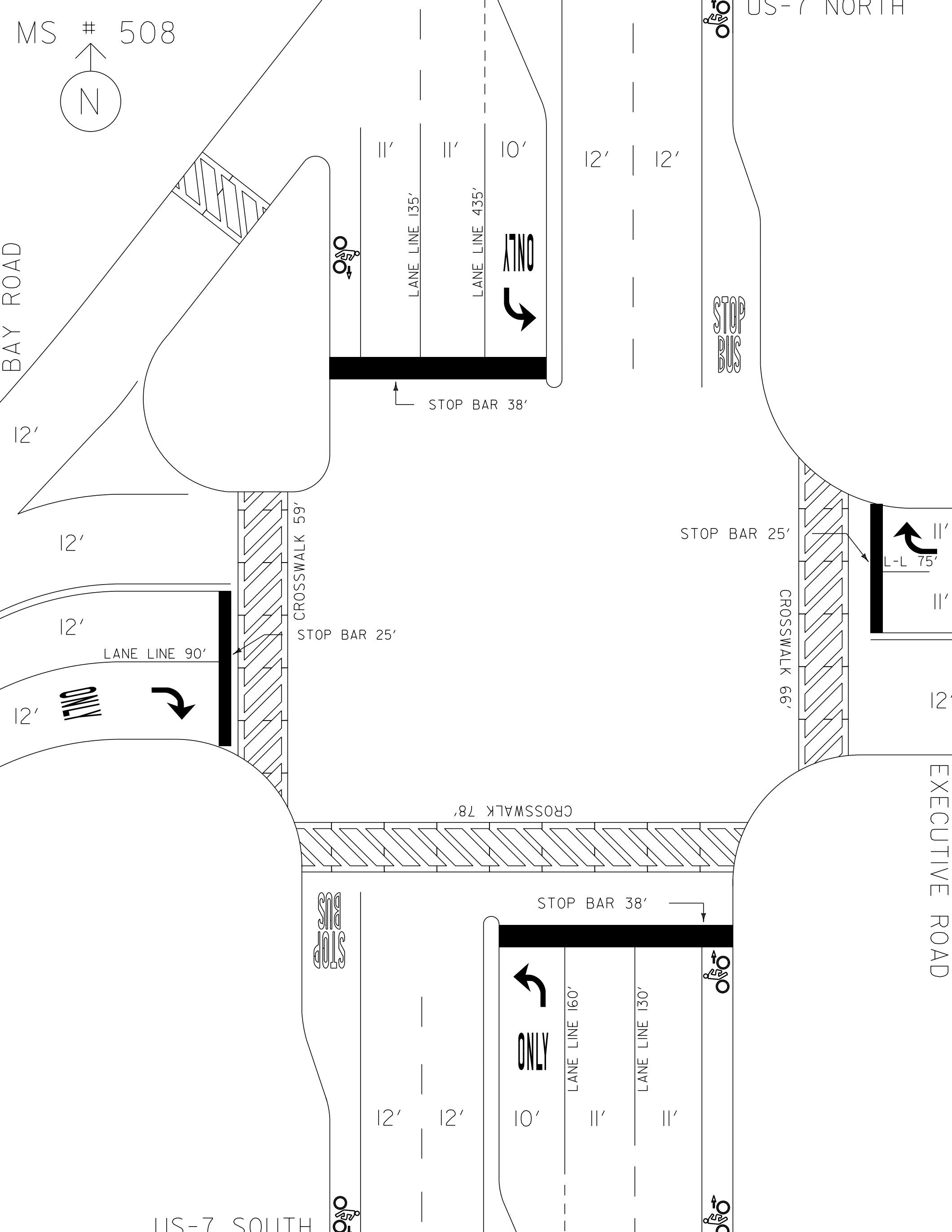


US-7 NORTH

BAY ROAD

EXECUTIVE ROAD

US-7 SOUTH



12'

12'

12'

12'

LANE LINE 90'

CROSSWALK 59'

STOP BAR 25'

CROSSWALK 78'

STOP BAR 38'

STOP BAR 25'

CROSSWALK 66'

L-L 75'

12'

12'

12'

10'

12'

12'

LANE LINE 160'

LANE LINE 130'

12'

12'

10'

12'

12'

LANE LINE 135'

LANE LINE 435'

ONLY

STOP BAR 38'

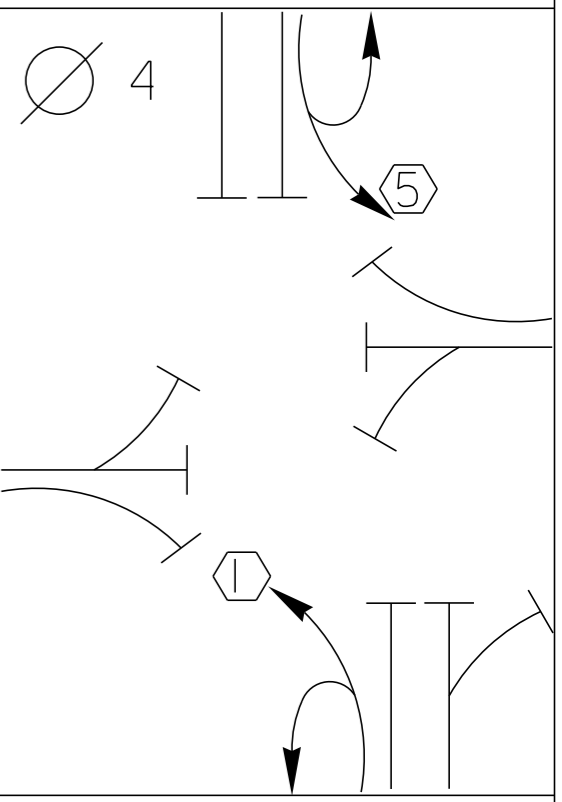
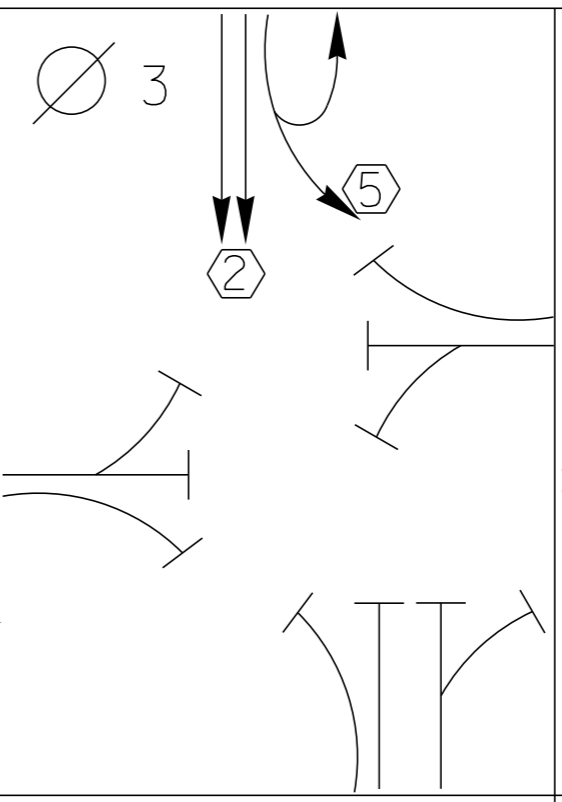
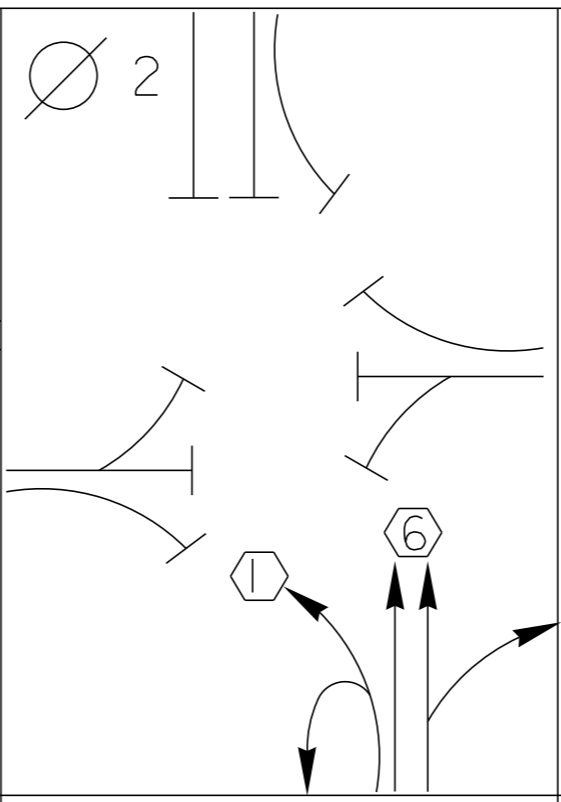
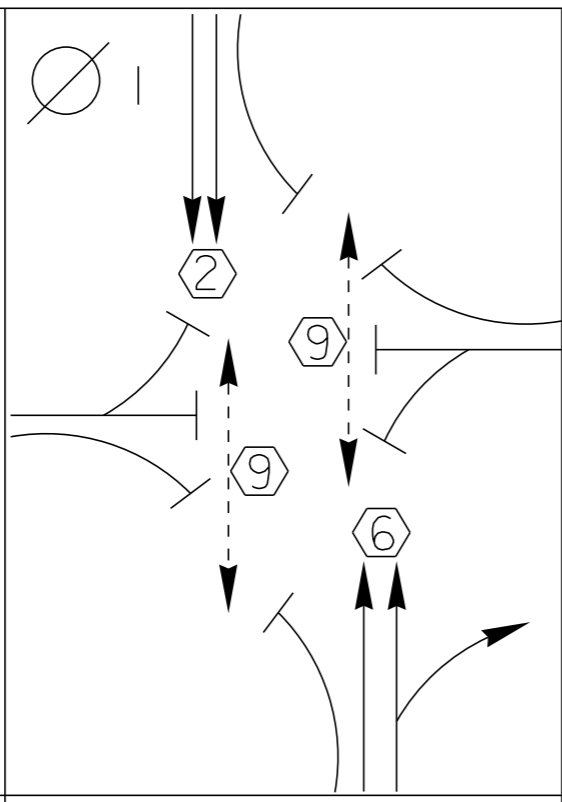
STOP BUS

STOP BUS

STOP BUS



D-I-A-G-R-A-M



TIMING

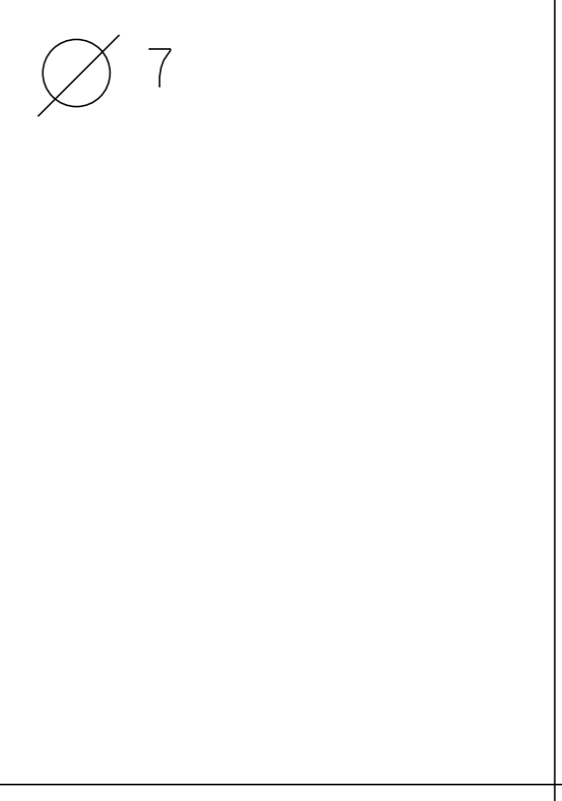
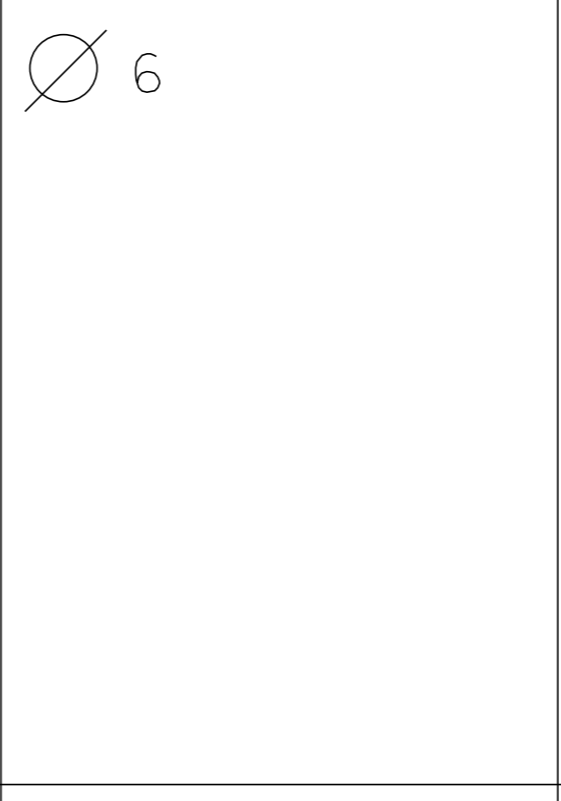
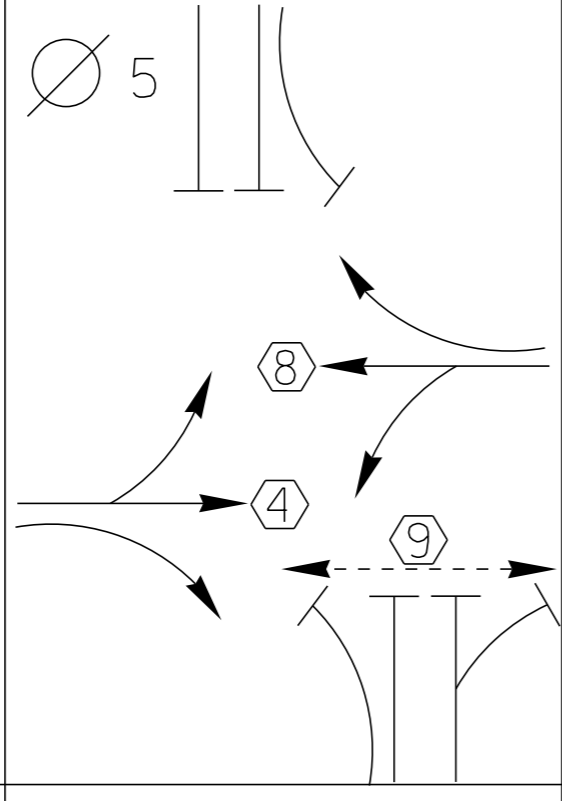
G =  
Y =

G =  
Y =

G =  
Y =

G =  
Y =

D-I-A-G-R-A-M



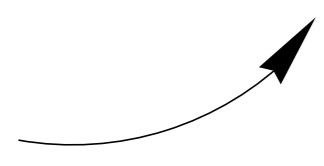
TIMING

G =  
Y =

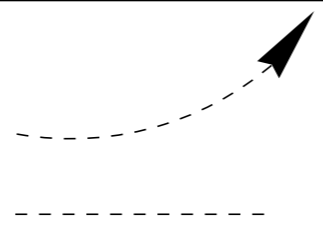
G =  
Y =

G =  
Y =

G =  
Y =



PROTECTED  
TURNS



PERMITTED  
TURNS  
PEDESTRIAN

CYCLE LENGTH, C= \_\_\_\_\_ S



PROPERTY OF :  
VT. AGENCY OF TRANS.  
MAINTENANCE DIV.  
IN EMERGENCY CALL :  
DIST. TRANS. OFFICE  
655 - 1580 COLCHESTER  
NIGHTS & WEEKENDS : 878-7111  
INTERSECTION NO. MS-508



**DANGER**

115 VOLTS A.C.

**WARNING**

DO NOT OPERATE  
CABINET WITHOUT  
CMU / MMU

544101

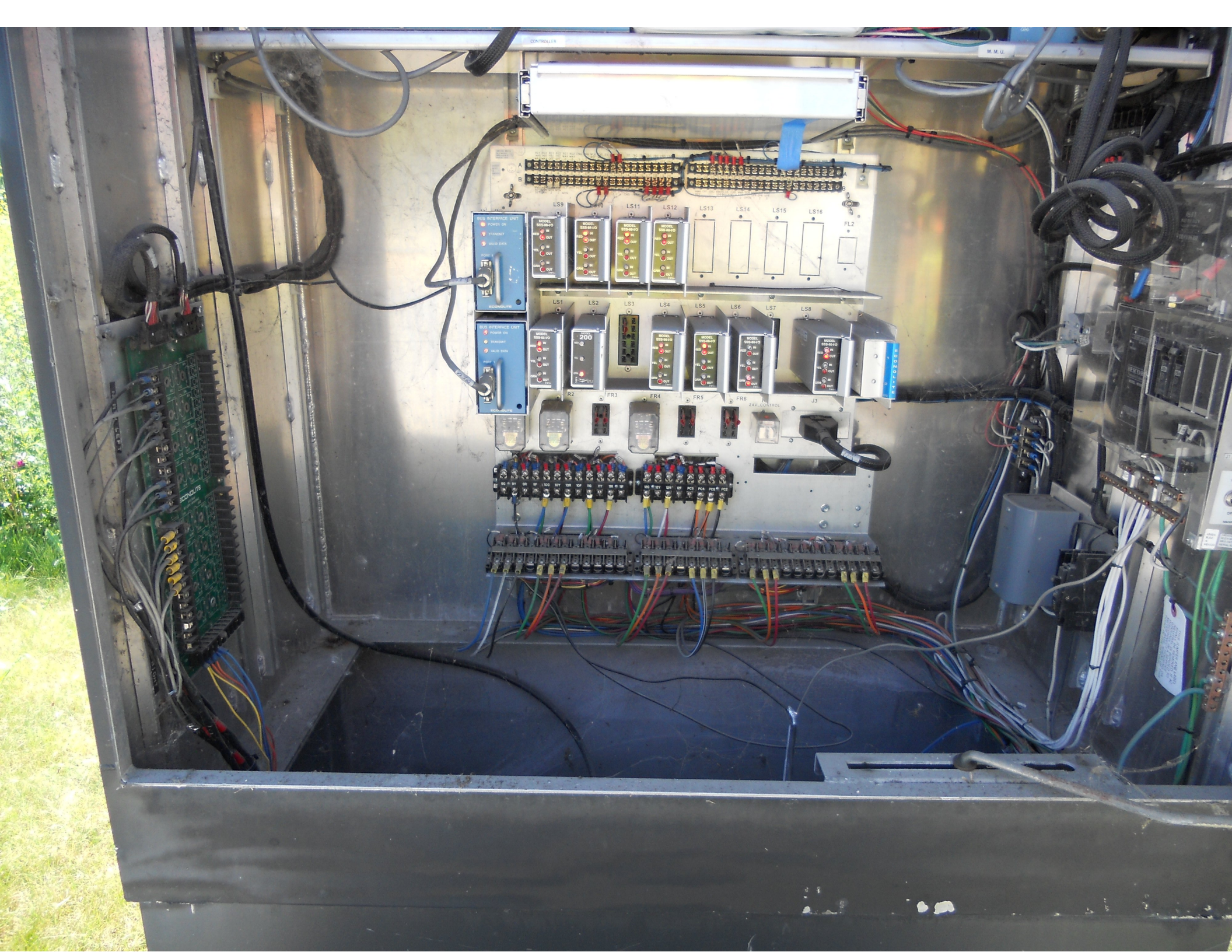
A white control panel with four buttons and a central rectangular display area. The buttons are labeled: CONTROL BS ON, CONTROL BS OFF, AUTO, FLASH, STOP TMR AUTO, and STOP TMR ON. A black cylindrical component is connected to the panel via a flexible metal conduit.

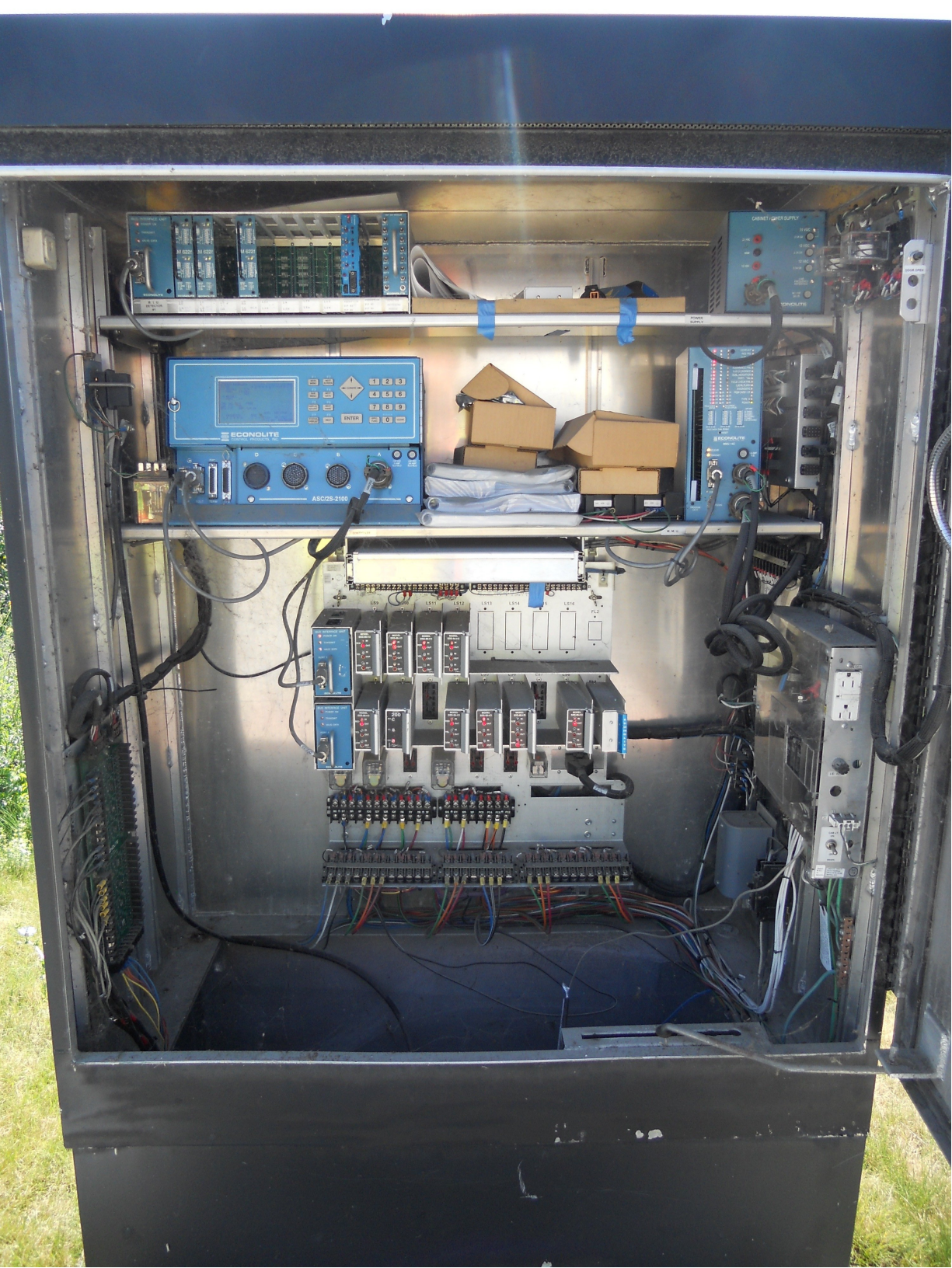
SECONDLITE

A clear plastic bag containing several sheets of technical drawings and forms. The documents include a schematic diagram with various components and labels, and a form with fields for 'Date', 'Time', 'Name', 'Address', 'City', 'State', 'Zip', 'Phone', and 'Fax'. The form also has a section for 'Notes'.









**BUS INTERFACE UNIT**

POWER ON  
TRANSMIT  
VALID DATA

PORT

**M 622t** **M 622t** **M 622t**

DET FLT  
SENS FREQ  
1: 1-NORM 2-WLD 3-OFF 0-M  
2: 1-NORM 2-WLD 3-OFF 0-M

DET SW MODULE

DET 1 T 10  
DET 2 T 11  
DET 3 T 12  
DET 4 T 13  
DET 5 T 14  
DET 6 T 15  
DET 7 T 16  
DET 8 T 17  
DET 9 T 18

B. I. U. DETECTOR #1

L3 4B L4 5  
L1 1 L2 4A L7 8B  
L5 8A L6 8B L11 12 L9 10 L15 16 L13 14

PREEMPTION EVP H3 EVP H4  
PREEMPTION EVP H5 EVP H6  
DETECTOR SWITCHING MODULE

**ECONOLITE CONTROL PRODUCTS, INC.**

DSP ADU

115 VAC 1 AMP SLO-BLO +24 VDC 3/4 AMP SLO-BLO

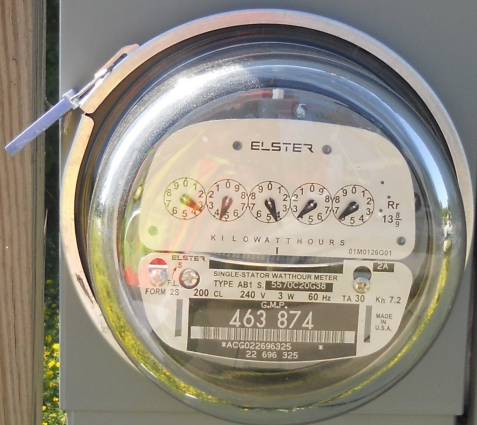
STATUS DISPLAY: 1234567890  
 RECALL MSG 9 T4 M4 PED  
 RECALL PRI 11  
 NO SRC TLM FREE  
 NO CVC 9s  
 NO CVC 19s TLM OK  
 PRIORITY 123456 125

F1 MAIN MENU F2 NEXT SCREEN  
 F3 SUB MENU F4 NEXT DATA  
 F5 DISPLAY ADJUST F6 NEXT PAGE  
 F7 STATUS DISPLAY F8 HELP

↑  
← CURSOR →  
↓

1 2 3  
4 5 6  
7 8 9  
ENTER  
TOGGLE SPEC FUNC 0 CLEAR

D C B A



ELSTER

K I L O W A T T H O U R S

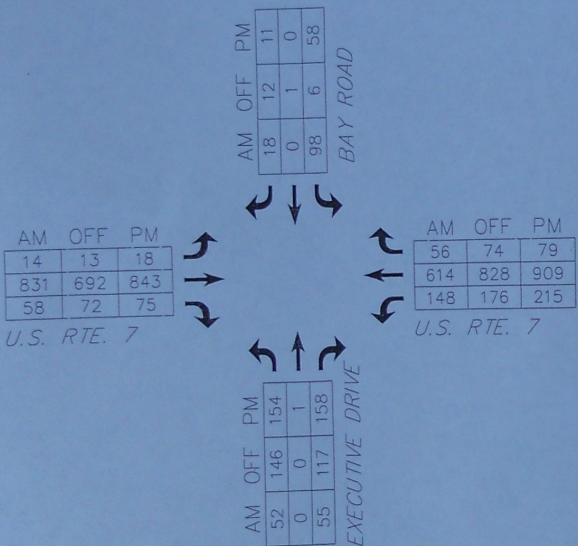
ELSTER  
SINGLE-PHASE WATT-HOUR METER  
TYPE AB1 S 5570020533  
FORM 25 200 CL 240 V 3 W 60 Hz TA 30 Kx 7.2  
463 874  
MADE  
U.S.A.  
MAG 022696325  
22 696 325



VEHICLE LOOP DETECTORS							TEST RESULTS			
LOOP NO.	SIZE	TYPE	NO. TURNS	CALL #	WIDE	AMP	RESISTANCE (Ω)	RESISTANCE (Ω) @ 77 F	(PHAS 7)	LEAKAGE TO GROUND
△	6'x40'	QUAD	2	# 1			387	0.85		
△	6'x40'	QUAD	2	# 2			392	0.91		
△	6'x30'	QUAD	2	# 3			278	0.58		
△	6'x30'	QUAD	2	# 4			372	0.53		
△	6'x30'	QUAD	2	# 5			337	0.90		
△	6'x30'	QUAD	2	# 4			325	0.88		

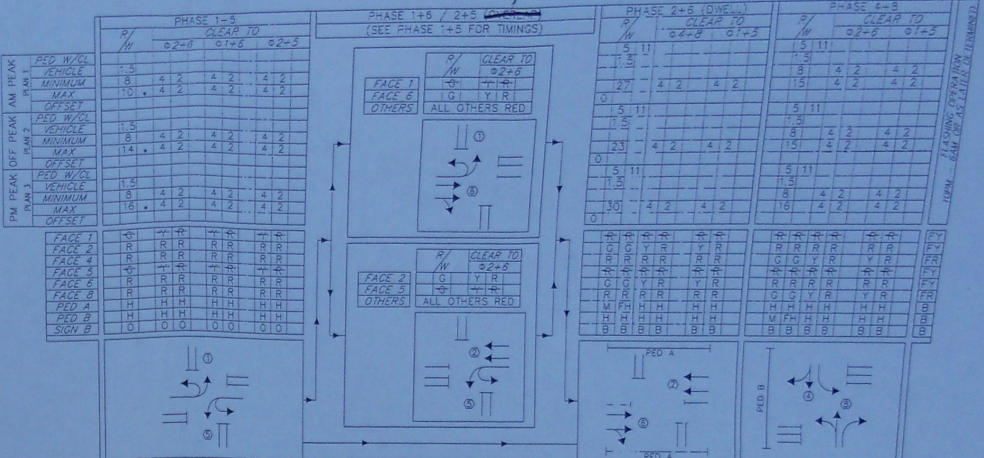
ALL CALCULATED VALUES ARE AT THE CONTROLLER MEASURED VALUES MUST BE FILLED IN PRIOR TO TEST PERIOD

### 1998 AVERAGE WEEKDAY TRAFFIC



### TIMING & PHASING

PER BRIAN FLEAGLE 6-29-05



M = SOLID MAN, FH = FLASHING HAND, H = SOLID HAND, B = BLANK, O = "NO TURN ON RED" ON PEDESTRIAN INDICATORS WILL OPERATE UPON ACTUATION ONLY AND WILL BE "H" ALL OTHER TIMES  
FACE NUMBERS ARE BASED ON NEMA PHASES  
(2,4,8 & 6 FOR THRU/RIGHTS AND 1,3,5 & 7 FOR THEIR ASSOCIATED PROTECTED LEFTS)  
+ = TOTAL FOR PHASE (1+5) AND OVERLAP  
SEE SIGNAL DRAWING NO. 2 FOR FIRE PRE-EMPTION

	PROGRAM PERIODS OF OPERATION												
	12 AM	1	2	3	4	5	6	7	8	9	10	11	12 AM
SUNDAY	F												F
MONDAY	F		1	2									F
TUESDAY	F		1										F
WEDNESDAY	F		1										F
THURSDAY	F		1										F
FRIDAY	F		1										F
SATURDAY	F		1	2	3								F

PLAN 1 - AM PEAK (70 SEC CYCLE) 6:00 AM - 8:00 AM MON. THRU FRI.  
PLAN 2 - OFF PEAK (70 SEC CYCLE) 8:00 AM - 4:00 PM MON. THRU FRI.  
6:00 PM - 12:00 AM MON. THRU FRI.  
6:00 AM - 11:30 AM SAT. & SUN.  
4:00 PM - 12:00 AM SAT. & SUN.  
PLAN 3 - PM PEAK (80 SEC CYCLE) 4:00 PM - 6:00 PM MON. THRU FRI.  
11:30 AM - 4:00 PM SAT. & SUN.  
11:30 AM - 4:00 PM SAT. & SUN.  
FLASHING OPERATION 12:00 AM - 6:00 AM SUN. THRU SAT.

DATUM  
VERTICAL NVD 1929  
HORIZONTAL NAD 1927

### INTERSECTION NO. MS-508 (US 7 - BAY ROAD)

NOTE:  
SEE SIGNAL DRAWING NOS. 1 & 2 FOR:  
TRAFFIC SIGNAL & GENERAL NOTES AND  
LIST OF MAJOR EQUIPMENT.

SURVEYED BY  
DRAWN BY  
TRACED BY  
PROJECT NO.  
SIGNAL DRAWING NO.  
SHEET NO.



ONLY

11-0

BAY RD



ONLY

EXECUTIVE

11-0

WALK

WALK

WALK



ONLY

BAY RD

SHEL



BAY RD



40

NEWPORT

Red Apple  
MOTEL

NO  
PARKING  
IN  
BUS LANE



EXECUTIVE DR

EXECUTIVE DR

11-0

BAY RD

LEFT TURN  
ON  
RED

STOP







BAY RD



STOP  
BUS







15.00" / 20.0"  
65KSI / 219"  
10" / 49.0" / .26" / 70%



SIGNAL

AHEAD









EXECUTIVE RD

SHELBURNE RD

25



SHELBURNE RD



LEGAL LOAD  
LIMIT









UTIVE DR

SHELBURNE RD



SPEED LIMIT 25













EXECUTIVE DR



SPEED  
LIMIT  
40

RIGHT  
LANE  
ONLY

ONLY

EXECUTIVE DR

↑

◆

NO  
PARKING

STOP  
BUS





1580 5210  
65/43 273  
/26 1975

1580

1580













SHELBURNE RD

EXIT

ONLY





SHELBURNE RD



SHELBURNE RD



A black traffic light pole with a street sign that reads "SHELBURNE RD". The sign is green with white text. There are two traffic light heads on the pole, one on each side of the sign. A square sign with a circular symbol is also attached to the pole.



















Coordination Patterns

```

-----
Pattern 1
Cycle Length . . . 70  COS . . . . . 111
Offset . . . . . 50
Vehicle Permissive . . [1] 0 [2] 0
Vehicle Perm 2 Displacement 0 Phase Reservice. . NO
Splits: Phase 1- 16 2- 32 3- 0 4- 22
          Phase 5- 16 6- 32 7- 0 8- 22
          Phase 9- 0 10- 0 11- 0 12- 0 Split Sum: 0
Split Extension/Ring [1] 0 [2] 0
Split Demand Pattern [1] 0 [2] 0
XRT Pattern. . . 0
Phase Number: 1 2 3 4 5 6 7 8 9 10 11 12
Coord Phases . . . X . . . X . . . . .
Veh Recall . . . . . . . . . . .
Veh Max Recall . . X . . X . . . . .
Ped Recall . . . . . . . . . . .
Veh Omit . . . . . . . . . . .
Alt Sequence . . A: . B: . C: . D: . E: . F: .
-----
    
```

```

-----
Pattern 2
Cycle Length . . . 70  COS . . . . . 211
Offset . . . . . 5
Vehicle Permissive . . [1] 0 [2] 0
Vehicle Perm 2 Displacement 0 Phase Reservice. . NO
Splits: Phase 1- 20 2- 28 3- 0 4- 22
          Phase 5- 20 6- 28 7- 0 8- 22
          Phase 9- 0 10- 0 11- 0 12- 0 Split Sum: 0
Split Extension/Ring [1] 0 [2] 0
Split Demand Pattern [1] 0 [2] 0
XRT Pattern. . . 0
Phase Number: 1 2 3 4 5 6 7 8 9 10 11 12
Coord Phases . . . X . . . X . . . . .
Veh Recall . . . . . . . . . . .
Veh Max Recall . . X . . X . . . . .
Ped Recall . . . . . . . . . . .
Veh Omit . . . . . . . . . . .
Alt Sequence . . A: . B: . C: . D: . E: . F: .
-----
    
```

```

-----
Pattern 3
Cycle Length . . . 80  COS . . . . . 311
Offset . . . . . 30
Vehicle Permissive . . [1] 0 [2] 0
Vehicle Perm 2 Displacement 0 Phase Reservice. . NO
Splits: Phase 1- 22 2- 36 3- 0 4- 22
          Phase 5- 22 6- 36 7- 0 8- 22
          Phase 9- 0 10- 0 11- 0 12- 0 Split Sum: 0
Split Extension/Ring [1] 0 [2] 0
Split Demand Pattern [1] 0 [2] 0
XRT Pattern. . . 0
Phase Number: 1 2 3 4 5 6 7 8 9 10 11 12
Coord Phases . . . X . . . X . . . . .
Veh Recall . . . . . . . . . . .
Veh Max Recall . . X . . X . . . . .
Ped Recall . . . . . . . . . . .
Veh Omit . . . . . . . . . . .
Alt Sequence . . A: . B: . C: . D: . E: . F: .
-----
    
```



NIC Program Steps

---

Step	Program	Step Begins	Pattern	Override
1	1	0600	1	NO
2	1	0800	2	NO
3	1	1600	3	NO
4	1	1800	2	NO
5	2	0600	2	NO
6	2	1130	3	NO
7	2	1600	2	NO

TOD Program Steps

-----  
 Step 1            Program 1            Step Begins    0600

Flash. . . . . Dimming Enable. . . . .  
 Red Rest . . . . . Alt Veh Extension . . . . .  
 Spare 5. . . . . Det Log Enable. . . . .  
 Spare 3. . . . . Spare 4 . . . . .  
 Type 0 Dly Enable. . . Spare 2 . . . . .  
 Det Diag Plan. . . . 0

	Phase Number											
	1	2	3	4	5	6	7	8	9	10	11	12
Max 2 Enable . . . . .	.	.	.	.	.	.	.	.	.	.	.	.
Max 3 Enable . . . . .	.	.	.	.	.	.	.	.	.	.	.	.
Veh Recall . . . . .	.	.	.	.	.	.	.	.	.	.	.	.
Veh Max Recall . . . . .	.	.	.	.	.	.	.	.	.	.	.	.
Ped Recall . . . . .	.	.	.	.	.	.	.	.	.	.	.	.
Cond Service Inhibit. . . . .	.	.	.	.	.	.	.	.	.	.	.	.
Phase Omit . . . . .	.	.	.	.	.	.	.	.	.	.	.	.
Special Function . . . . .	.	.	.	.	.	.	.	.	.	.	.	.

Alt Sequence . . . . . A B C D E F  
 -----

Step 2            Program 1            Step Begins    0800

Flash. . . . . Dimming Enable. . . . .  
 Red Rest . . . . . Alt Veh Extension . . . . .  
 Spare 5. . . . . Det Log Enable. . . . .  
 Spare 3. . . . . Spare 4 . . . . .  
 Type 0 Dly Enable. . . Spare 2 . . . . .  
 Det Diag Plan. . . . 0

	Phase Number											
	1	2	3	4	5	6	7	8	9	10	11	12
Max 2 Enable . . . . .	X	X	.	X	X	X	.	X	.	.	.	.
Max 3 Enable . . . . .	.	.	.	.	.	.	.	.	.	.	.	.
Veh Recall . . . . .	.	.	.	.	.	.	.	.	.	.	.	.
Veh Max Recall . . . . .	.	.	.	.	.	.	.	.	.	.	.	.
Ped Recall . . . . .	.	.	.	.	.	.	.	.	.	.	.	.
Cond Service Inhibit. . . . .	.	.	.	.	.	.	.	.	.	.	.	.
Phase Omit . . . . .	.	.	.	.	.	.	.	.	.	.	.	.
Special Function . . . . .	.	.	.	.	.	.	.	.	.	.	.	.

Alt Sequence . . . . . A B C D E F  
 -----

TOD Program Steps

-----  
 Step 3            Program 1            Step Begins    1600

Flash. . . . . Dimming Enable. . . . .  
 Red Rest . . . . . Alt Veh Extension . . . . .  
 Spare 5. . . . . Det Log Enable. . . . .  
 Spare 3. . . . . Spare 4 . . . . .  
 Type 0 Dly Enable. . . Spare 2 . . . . .  
 Det Diag Plan. . . . 0

	Phase Number											
	1	2	3	4	5	6	7	8	9	10	11	12
Max 2 Enable . . . . .	.	.	.	.	.	.	.	.	.	.	.	.
Max 3 Enable . . . . .	X	X	.	X	X	X	.	X	.	.	.	.
Veh Recall . . . . .	.	.	.	.	.	.	.	.	.	.	.	.
Veh Max Recall . . . . .	.	.	.	.	.	.	.	.	.	.	.	.
Ped Recall . . . . .	.	.	.	.	.	.	.	.	.	.	.	.
Cond Service Inhibit. . . . .	.	.	.	.	.	.	.	.	.	.	.	.
Phase Omit . . . . .	.	.	.	.	.	.	.	.	.	.	.	.
Special Function . . . . .	.	.	.	.	.	.	.	.	.	.	.	.

Alt Sequence . . . . . A B C D E F  
 -----

Step 4            Program 1            Step Begins    1800

Flash. . . . . Dimming Enable. . . . .  
 Red Rest . . . . . Alt Veh Extension . . . . .  
 Spare 5. . . . . Det Log Enable. . . . .  
 Spare 3. . . . . Spare 4 . . . . .  
 Type 0 Dly Enable. . . Spare 2 . . . . .  
 Det Diag Plan. . . . 0

	Phase Number											
	1	2	3	4	5	6	7	8	9	10	11	12
Max 2 Enable . . . . .	X	X	.	X	X	X	.	X	.	.	.	.
Max 3 Enable . . . . .	.	.	.	.	.	.	.	.	.	.	.	.
Veh Recall . . . . .	.	.	.	.	.	.	.	.	.	.	.	.
Veh Max Recall . . . . .	.	.	.	.	.	.	.	.	.	.	.	.
Ped Recall . . . . .	.	.	.	.	.	.	.	.	.	.	.	.
Cond Service Inhibit. . . . .	.	.	.	.	.	.	.	.	.	.	.	.
Phase Omit . . . . .	.	.	.	.	.	.	.	.	.	.	.	.
Special Function . . . . .	.	.	.	.	.	.	.	.	.	.	.	.

Alt Sequence . . . . . A B C D E F  
 -----

TOD Program Steps

-----  
 Step 5            Program 2            Step Begins    0600

Flash. . . . . Dimming Enable. . . . .  
 Red Rest . . . . . Alt Veh Extension . . . . .  
 Spare 5. . . . . Det Log Enable. . . . .  
 Spare 3. . . . . Spare 4 . . . . .  
 Type 0 Dly Enable. . . Spare 2 . . . . .  
 Det Diag Plan. . . . 0

Phase Number

	1	2	3	4	5	6	7	8	9	10	11	12
Max 2 Enable . . . . .	X	X	.	X	X	X	.	X	.	.	.	.
Max 3 Enable . . . . .	.	.	.	.	.	.	.	.	.	.	.	.
Veh Recall . . . . .	.	.	.	.	.	.	.	.	.	.	.	.
Veh Max Recall . . . . .	.	.	.	.	.	.	.	.	.	.	.	.
Ped Recall . . . . .	.	.	.	.	.	.	.	.	.	.	.	.
Cond Service Inhibit. . . . .	.	.	.	.	.	.	.	.	.	.	.	.
Phase Omit . . . . .	.	.	.	.	.	.	.	.	.	.	.	.
Special Function . . . . .	.	.	.	.	.	.	.	.	.	.	.	.

A    B    C    D    E    F

Alt Sequence . . . . .  
 -----

Step 6            Program 2            Step Begins    1130

Flash. . . . . Dimming Enable. . . . .  
 Red Rest . . . . . Alt Veh Extension . . . . .  
 Spare 5. . . . . Det Log Enable. . . . .  
 Spare 3. . . . . Spare 4 . . . . .  
 Type 0 Dly Enable. . . Spare 2 . . . . .  
 Det Diag Plan. . . . 0

Phase Number

	1	2	3	4	5	6	7	8	9	10	11	12
Max 2 Enable . . . . .	.	.	.	.	.	.	.	.	.	.	.	.
Max 3 Enable . . . . .	X	X	.	X	X	X	.	X	.	.	.	.
Veh Recall . . . . .	.	.	.	.	.	.	.	.	.	.	.	.
Veh Max Recall . . . . .	.	.	.	.	.	.	.	.	.	.	.	.
Ped Recall . . . . .	.	.	.	.	.	.	.	.	.	.	.	.
Cond Service Inhibit. . . . .	.	.	.	.	.	.	.	.	.	.	.	.
Phase Omit . . . . .	.	.	.	.	.	.	.	.	.	.	.	.
Special Function . . . . .	.	.	.	.	.	.	.	.	.	.	.	.

A    B    C    D    E    F

Alt Sequence . . . . .  
 -----

TOD Program Steps

-----  
 Step 7            Program 2            Step Begins    1800

Flash. . . . . Dimming Enable. . . . .  
 Red Rest . . . . . Alt Veh Extension . . . . .  
 Spare 5. . . . . Det Log Enable. . . . .  
 Spare 3. . . . . Spare 4 . . . . .  
 Type 0 Dly Enable. . . Spare 2 . . . . .  
 Det Diag Plan. . . . 0

	Phase Number											
	1	2	3	4	5	6	7	8	9	10	11	12
Max 2 Enable . . . . .	X	X	.	X	X	X	.	X	.	.	.	.
Max 3 Enable . . . . .	.	.	.	.	.	.	.	.	.	.	.	.
Veh Recall . . . . .	.	.	.	.	.	.	.	.	.	.	.	.
Veh Max Recall . . . . .	.	.	.	.	.	.	.	.	.	.	.	.
Ped Recall . . . . .	.	.	.	.	.	.	.	.	.	.	.	.
Cond Service Inhibit. . . . .	.	.	.	.	.	.	.	.	.	.	.	.
Phase Omit . . . . .	.	.	.	.	.	.	.	.	.	.	.	.
Special Function . . . . .	.	.	.	.	.	.	.	.	.	.	.	.

Alt Sequence . . . . . A B C D E F  
 -----

Step 9            Program 1            Step Begins    0000

Flash. . . . . Dimming Enable. . . . .  
 Red Rest . . . . . Alt Veh Extension . . . . .  
 Spare 5. . . . . Det Log Enable. . . . .  
 Spare 3. . . . . Spare 4 . . . . .  
 Type 0 Dly Enable. . . Spare 2 . . . . .  
 Det Diag Plan. . . . 0

	Phase Number											
	1	2	3	4	5	6	7	8	9	10	11	12
Max 2 Enable . . . . .	.	.	.	.	.	.	.	.	.	.	.	.
Max 3 Enable . . . . .	.	.	.	.	.	.	.	.	.	.	.	.
Veh Recall . . . . .	.	.	.	.	.	.	.	.	.	.	.	.
Veh Max Recall . . . . .	.	.	.	.	.	.	.	.	.	.	.	.
Ped Recall . . . . .	.	.	.	.	.	.	.	.	.	.	.	.
Cond Service Inhibit. . . . .	.	.	.	.	.	.	.	.	.	.	.	.
Phase Omit . . . . .	.	.	.	.	.	.	.	.	.	.	.	.
Special Function . . . . .	.	.	.	.	.	.	.	.	.	.	.	.

Alt Sequence . . . . . A B C D E F  
 -----

TOD Program Steps

-----

Step 10            Program 2            Step Begins    0000

Flash. . . . .	X	Dimming Enable. . . . .	
Red Rest . . . . .	.	Alt Veh Extension . . . . .	
Spare 5. . . . .	.	Det Log Enable. . . . .	
Spare 3. . . . .	.	Spare 4 . . . . .	
Type 0 Dly Enable. . . . .	.	Spare 2 . . . . .	
Det Diag Plan. . . . .	0		

	Phase Number											
	1	2	3	4	5	6	7	8	9	10	11	12
Max 2 Enable . . . . .	.	.	.	.	.	.	.	.	.	.	.	.
Max 3 Enable . . . . .	.	.	.	.	.	.	.	.	.	.	.	.
Veh Recall . . . . .	.	.	.	.	.	.	.	.	.	.	.	.
Veh Max Recall . . . . .	.	.	.	.	.	.	.	.	.	.	.	.
Ped Recall . . . . .	.	.	.	.	.	.	.	.	.	.	.	.
Cond Service Inhibit. . . . .	.	.	.	.	.	.	.	.	.	.	.	.
Phase Omit . . . . .	.	.	.	.	.	.	.	.	.	.	.	.
Special Function . . . . .	.	.	.	.	.	.	.	.	.	.	.	.

	A	B	C	D	E	F
Alt Sequence . . . . .	.	.	.	.	.	.

-----