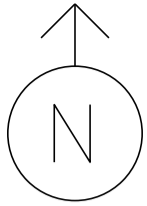


MS # 506



US-7 NORTH

HARBOR ROAD

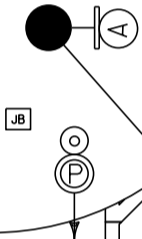
- ⊙ PEDESTAL POST
- Ⓟ PEDESTRIAN SIGNAL
- ⊥ L.E.D REGULATORY SIGN
- ⊠ CONTROL BOX
- ⋯ LOOP DETECTION
- Ⓜ JUNCTION BOX
- Ⓐ =
- Ⓑ =
- Ⓒ =
- Ⓓ =



ONLY



STOP



9

1 B

8

8

C

C

4 R

4

4

4

8

8



JB



5 B

2



ONLY

5

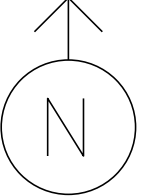
2

FALLS ROAD

US-7 SOUTH

NOT TO SCALE

MS # 506



US-7 NORTH

HARBOR ROAD

11'

10'

11'

LANE LINE 90'

ONLY



STOP BAR 22'

STOP

15'

17'

CROSSWALK 47'

STOP BAR 23'

CROSSWALK 50'

LANE LINE 65'

12'

11'

STOP BAR 17'

CROSSWALK 40'

15'

STOP BAR 22'



ONLY

LANE LINE 90'

FALLS ROAD

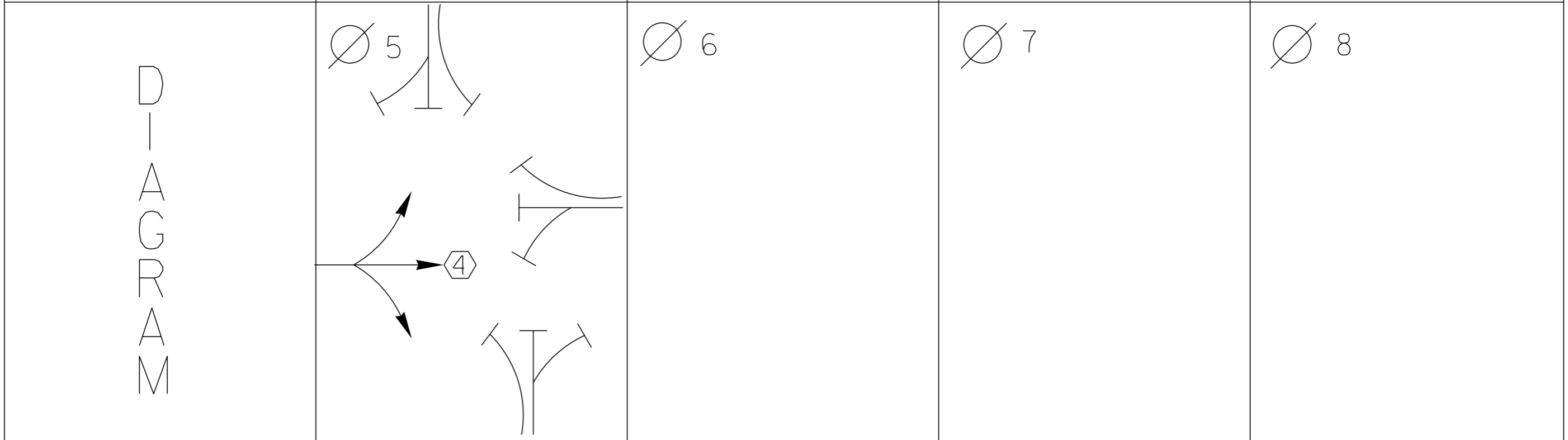
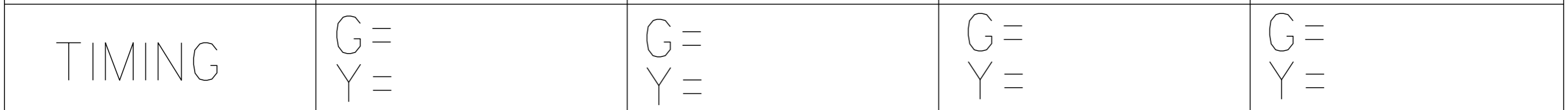
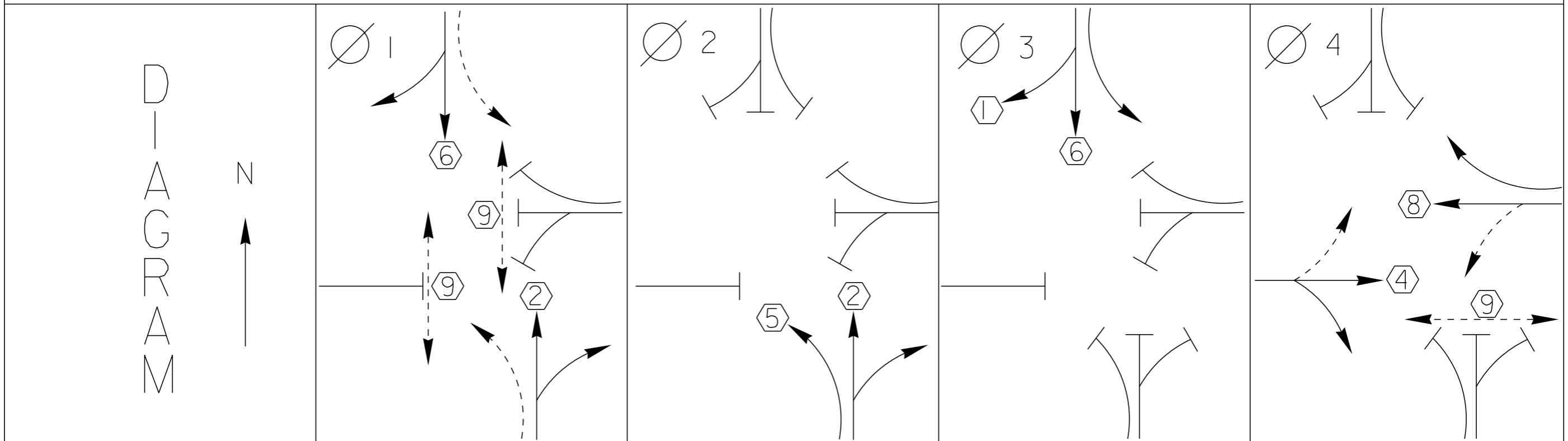
US-7 SOUTH

11'

11'

11'

NOT TO SCALE





DANGER

115 VOLTS A.C.

WARNING

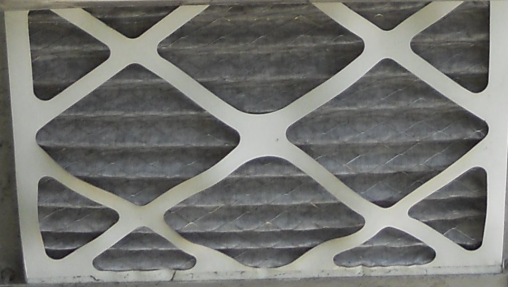
DO NOT OPERATE
CABINET WITHOUT
CMU / MMU

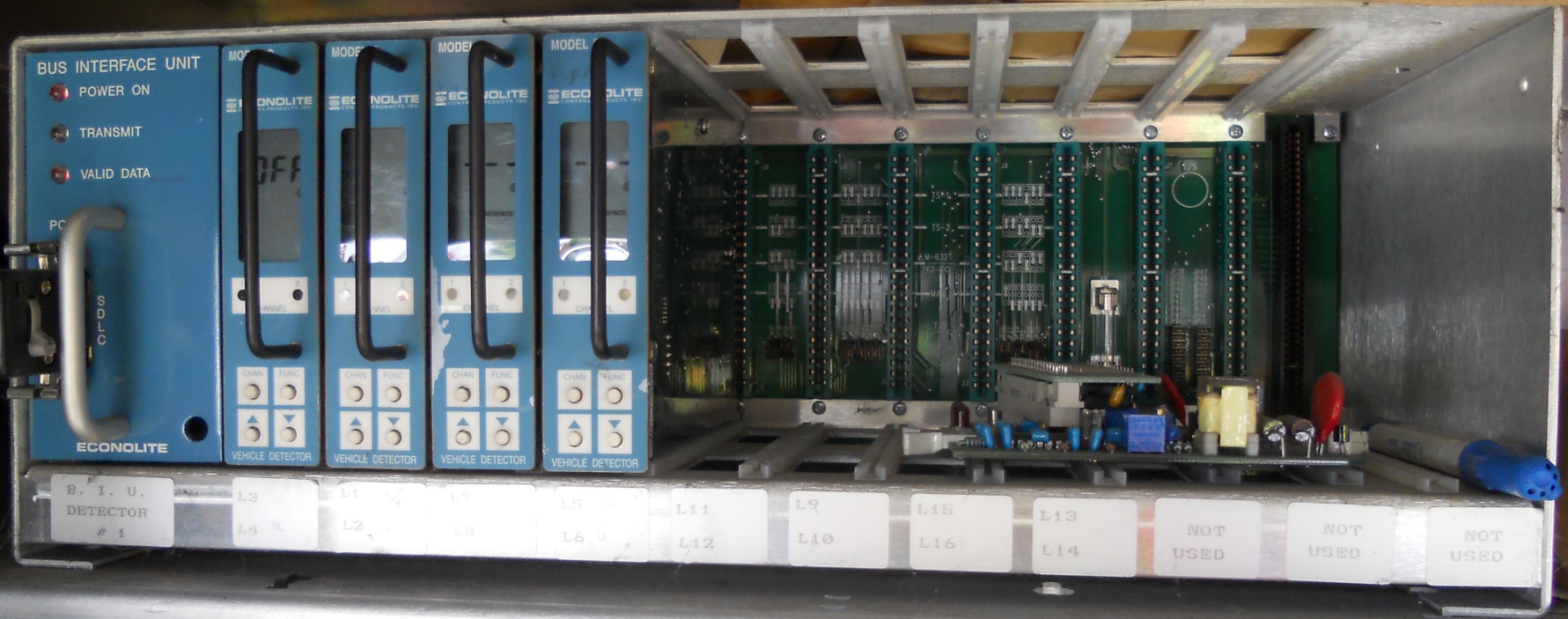
CONTROL PANEL

CONTROL ON	POLICE AUTO	HIGH TEST SW'S			
OFF	POLICE FLASH	21/A	23/C	24/D	25/E
MAIN ON	FLASH STOP TRAIN	21/B	22/B	23/C	24/D
OFF	ON	27	24	26	28

WARRANTY LABEL

DATE 03/04-71-001





BUS INTERFACE UNIT

- POWER ON
- TRANSMIT
- VALID DATA

PC

SDLC

ECONOLITE

MODEL ECONOLITE

VEHICLE DETECTOR

VEHICLE DETECTOR

VEHICLE DETECTOR

VEHICLE DETECTOR

B. I. U.
DETECTOR
1

L3
L4

L5
L6

L7
L8

L9
L10

L11
L12

L13
L14

L15
L16

NOT
USED

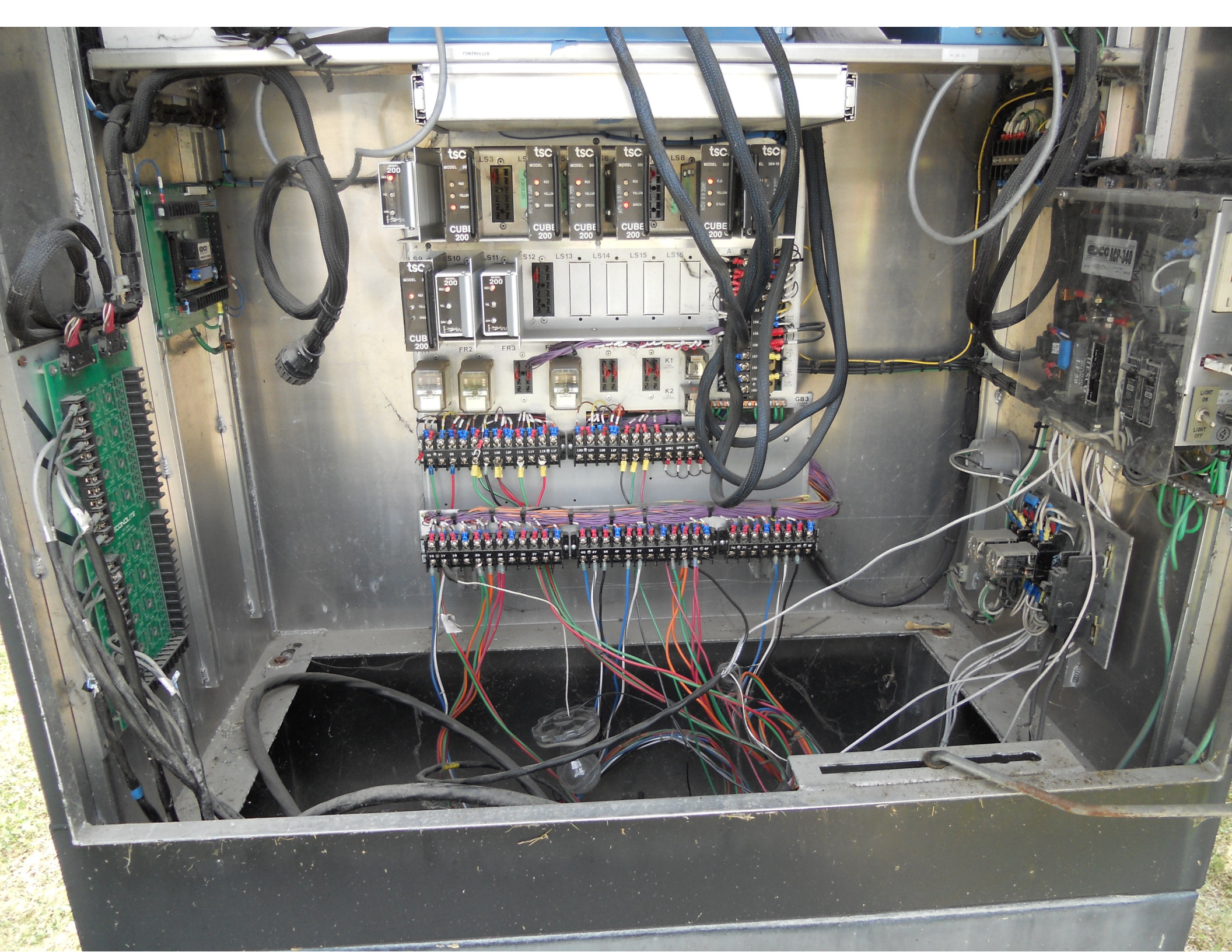
NOT
USED

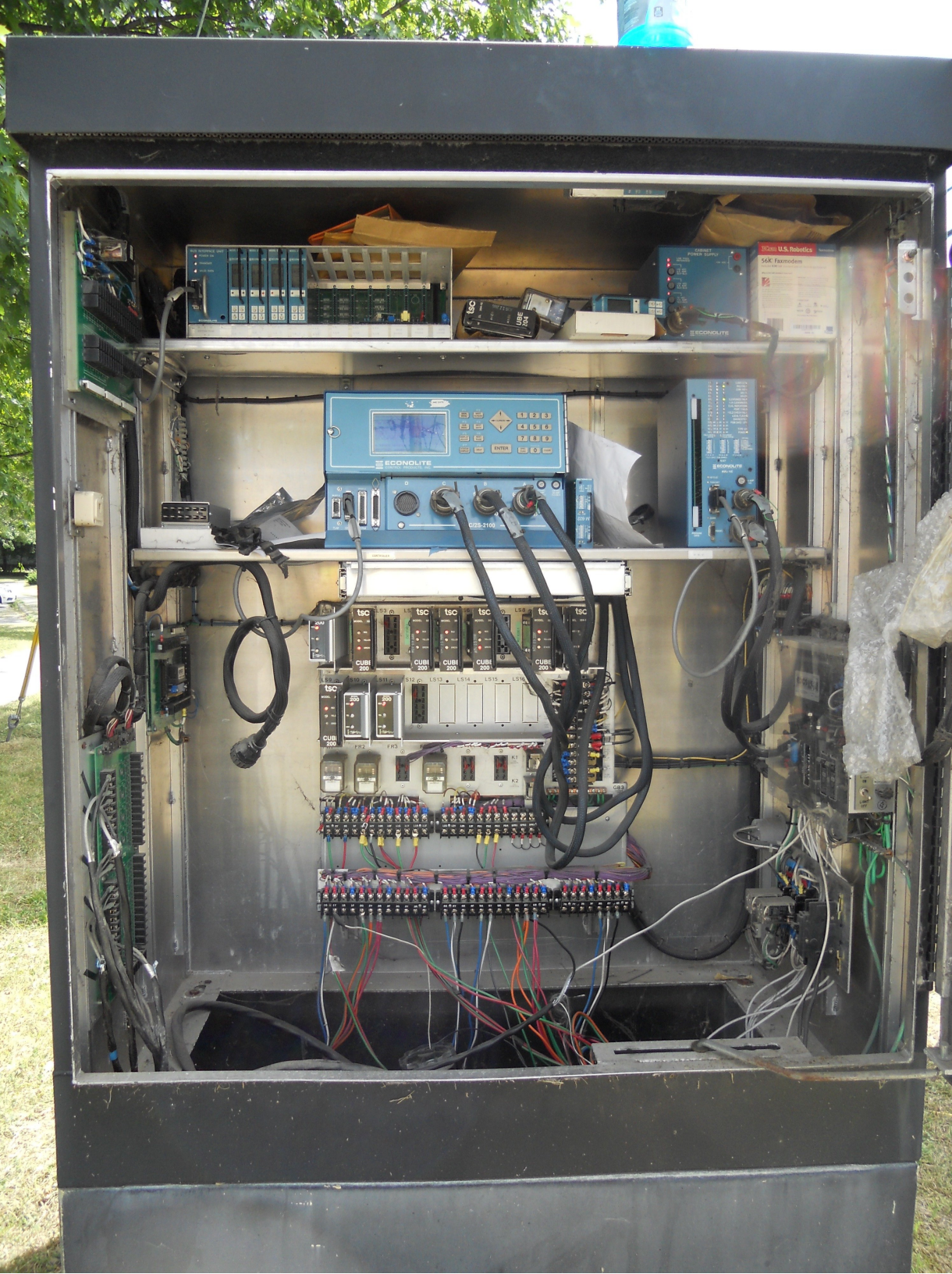
NOT
USED

E AND DATE

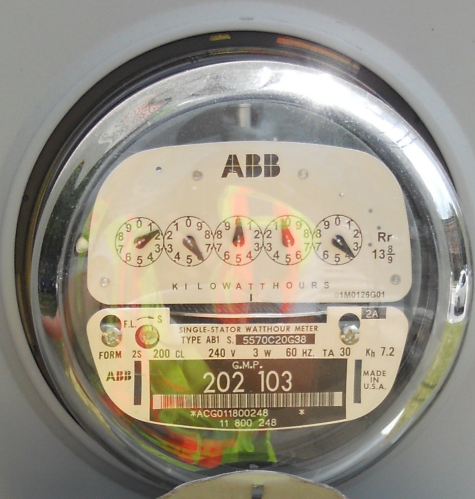
TOD PROGRAM STEP 10
DRY PEN NUM... 0
STEP BEGINS... 0:00

F1 MAIN MENU
F2 NEXT SCREEN





⚡ DANGER
HAZARD OF ELECTRICAL SHOCK
OR BURN IF COVER REMOVED.
SERVICE BY UTILITY
AUTHORIZED PERSONNEL ONLY.
DO NOT PAINT OVER OR REMOVE THIS LABEL.
PENDING NO. 802-1



⚡ DANGER
HAZARD OF ELECTRICAL SHOCK
OR BURN IF COVER REMOVED.
SERVICE BY UTILITY
AUTHORIZED PERSONNEL ONLY.
DO NOT PAINT OVER OR REMOVE THIS LABEL.

SERVICE DISCONNECT

⚡ DANGER
HAZARD OF ELECTRICAL SHOCK
OR BURN IF COVER REMOVED.
SERVICE BY UTILITY
AUTHORIZED PERSONNEL ONLY.
DO NOT PAINT OVER OR REMOVE THIS LABEL.



ZITTO



DANNY DOWN JULY 11

ONLY





FCS 928
CIVIC
EX-L

Mobil

Falls Road

JAY SERIES
Jayco

LEFT TURN
YIELD
ON GREEN



















Roger Arel
Shelburne, VT
(802) 985-2045







Harbor Rd

BUS STOP











Rte Shelburne Wood Rd

P+

Harbor Rd

PATINA

CREEMEEZ!
ICE CREAM
SANDWICHES



LEFT TURN
YIELD
ON GREEN

Harbor Rd

SPEED
35

REDUCE
SPEED



LEFT TURN
YIELD
ON GREEN















Falls Rd











STANLEY
JULY 1

Coordination Patterns

NIC Program Steps

Step	Program	Step Begins	Pattern	Override
------	---------	-------------	---------	----------

TOD Program Steps

Step 1 Program 1 Step Begins 0600

Flash. Dimming Enable.
Red Rest Alt Veh Extension
Spare 5. Det Log Enable.
Spare 3. Spare 4
Type 0 Dly Enable. . . Spare 2
Det Diag Plan. . . . 0

Table with 12 columns (Phase Number 1-12) and rows for Max 2 Enable, Max 3 Enable, Veh Recall, Veh Max Recall, Ped Recall, Cond Service Inhibit, Phase Omit, and Special Function.

Alt Sequence A B C D E F

Step 2 Program 1 Step Begins 0900

Flash. Dimming Enable.
Red Rest Alt Veh Extension
Spare 5. Det Log Enable.
Spare 3. Spare 4
Type 0 Dly Enable. . . Spare 2
Det Diag Plan. . . . 0

Table with 12 columns (Phase Number 1-12) and rows for Max 2 Enable, Max 3 Enable, Veh Recall, Veh Max Recall, Ped Recall, Cond Service Inhibit, Phase Omit, and Special Function.

Alt Sequence A B C D E F

TOD Program Steps

Step 3 Program 1 Step Begins 1500

Flash. Dimming Enable.
Red Rest Alt Veh Extension
Spare 5. Det Log Enable.
Spare 3. Spare 4
Type 0 Dly Enable. . . Spare 2
Det Diag Plan. . . . 0

Table with 12 columns (Phase Number 1-12) and rows for Max 2 Enable, Max 3 Enable, Veh Recall, Veh Max Recall, Ped Recall, Cond Service Inhibit, Phase Omit, and Special Function.

Alt Sequence A B C D E F

Step 4 Program 1 Step Begins 1800

Flash. Dimming Enable.
Red Rest Alt Veh Extension
Spare 5. Det Log Enable.
Spare 3. Spare 4
Type 0 Dly Enable. . . Spare 2
Det Diag Plan. . . . 0

Table with 12 columns (Phase Number 1-12) and rows for Max 2 Enable, Max 3 Enable, Veh Recall, Veh Max Recall, Ped Recall, Cond Service Inhibit, Phase Omit, and Special Function.

Alt Sequence A B C D E F

TOD Program Steps

Step 5 Program 1 Step Begins 2200

Flash. X
Red Rest
Spare 5.
Spare 3.
Type 0 Dly Enable. . .
Det Diag Plan. . . . 0
Dimming Enable.
Alt Veh Extension
Det Log Enable.
Spare 4
Spare 2

Table with 12 columns for Phase Number (1-12) and rows for Max 2 Enable, Max 3 Enable, Veh Recall, Veh Max Recall, Ped Recall, Cond Service Inhibit, Phase Omit, and Special Function.

Alt Sequence A B C D E F

Step 6 Program 2 Step Begins 0600

Flash.
Red Rest
Spare 5.
Spare 3.
Type 0 Dly Enable. . .
Det Diag Plan. . . . 0
Dimming Enable.
Alt Veh Extension
Det Log Enable.
Spare 4
Spare 2

Table with 12 columns for Phase Number (1-12) and rows for Max 2 Enable, Max 3 Enable, Veh Recall, Veh Max Recall, Ped Recall, Cond Service Inhibit, Phase Omit, and Special Function.

Alt Sequence A B C D E F

TOD Program Steps

Step 7 Program 2 Step Begins 2100

Flash. X
Red Rest
Spare 5.
Spare 3.
Type 0 Dly Enable. . .
Det Diag Plan. . . . 0
Dimming Enable.
Alt Veh Extension
Det Log Enable.
Spare 4
Spare 2

Table with 12 columns (Phase Number 1-12) and 8 rows (Max 2 Enable, Max 3 Enable, Veh Recall, Veh Max Recall, Ped Recall, Cond Service Inhibit, Phase Omit, Special Function)

Alt Sequence A B C D E F

Step 9 Program 1 Step Begins 0820

Flash.
Red Rest
Spare 5.
Spare 3.
Type 0 Dly Enable. . .
Det Diag Plan. . . . 0
Dimming Enable.
Alt Veh Extension
Det Log Enable.
Spare 4
Spare 2

Table with 12 columns (Phase Number 1-12) and 8 rows (Max 2 Enable, Max 3 Enable, Veh Recall, Veh Max Recall, Ped Recall, Cond Service Inhibit, Phase Omit, Special Function)

Alt Sequence A B C D E F

TOD Program Steps

Step 10 Program 1 Step Begins 1440

Flash. Dimming Enable.
Red Rest Alt Veh Extension
Spare 5. Det Log Enable.
Spare 3. Spare 4
Type 0 Dly Enable. . . Spare 2
Det Diag Plan. . . . 0

Table with 12 columns for Phase Number (1-12) and rows for Max 2 Enable, Max 3 Enable, Veh Recall, Veh Max Recall, Ped Recall, Cond Service Inhibit, Phase Omit, and Special Function.

Alt Sequence A B C D E F

Step 11 Program 1 Step Begins 1510

Flash. Dimming Enable.
Red Rest Alt Veh Extension
Spare 5. Det Log Enable.
Spare 3. Spare 4
Type 0 Dly Enable. . . Spare 2
Det Diag Plan. . . . 0

Table with 12 columns for Phase Number (1-12) and rows for Max 2 Enable, Max 3 Enable, Veh Recall, Veh Max Recall, Ped Recall, Cond Service Inhibit, Phase Omit, and Special Function.

Alt Sequence A B C D E F