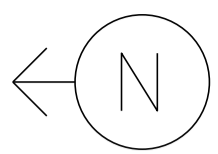


MS # 411



VT 10A EAST

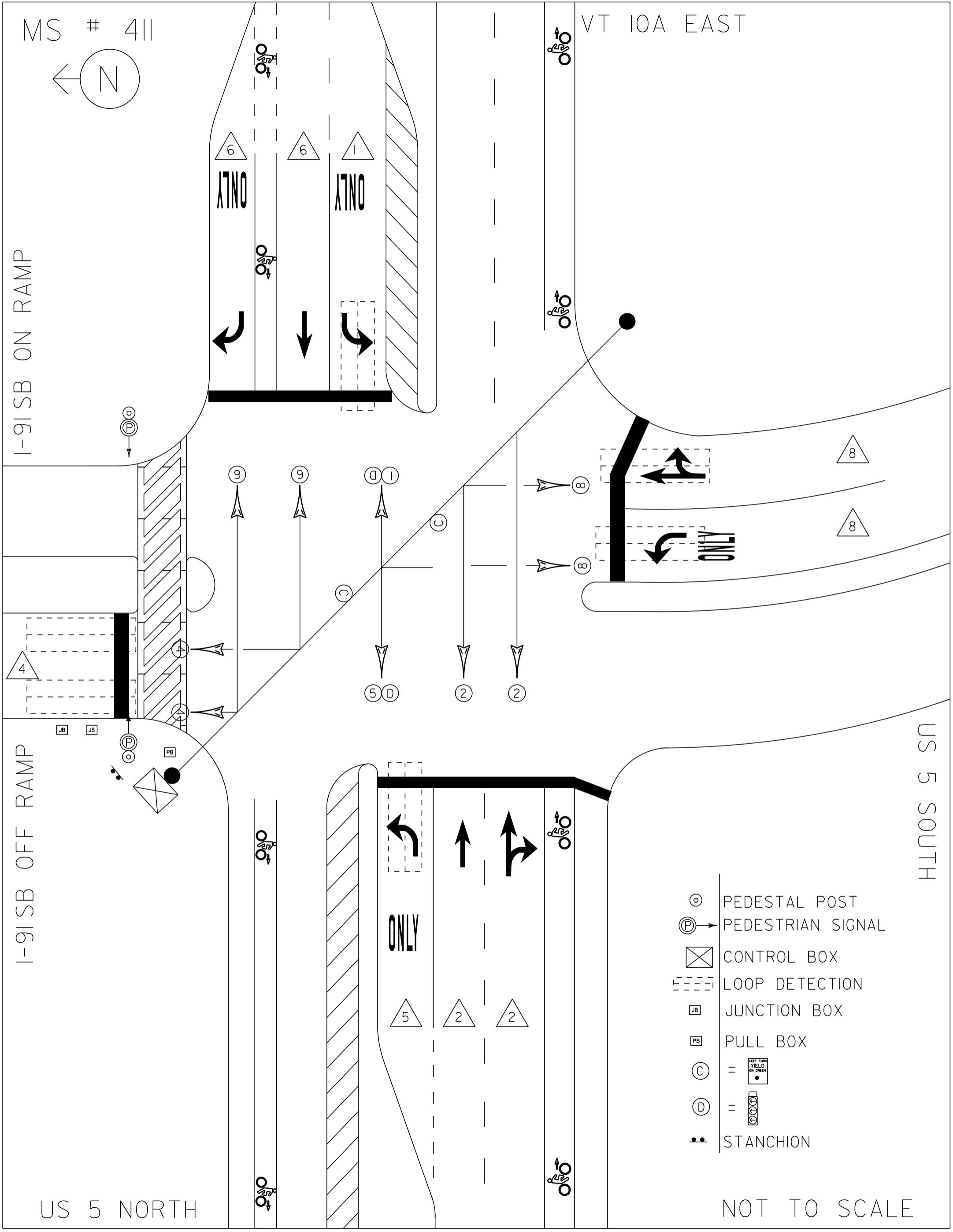
I-91 SB ON RAMP

I-91 SB OFF RAMP

US 5 SOUTH

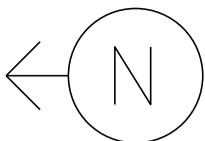
US 5 NORTH

NOT TO SCALE



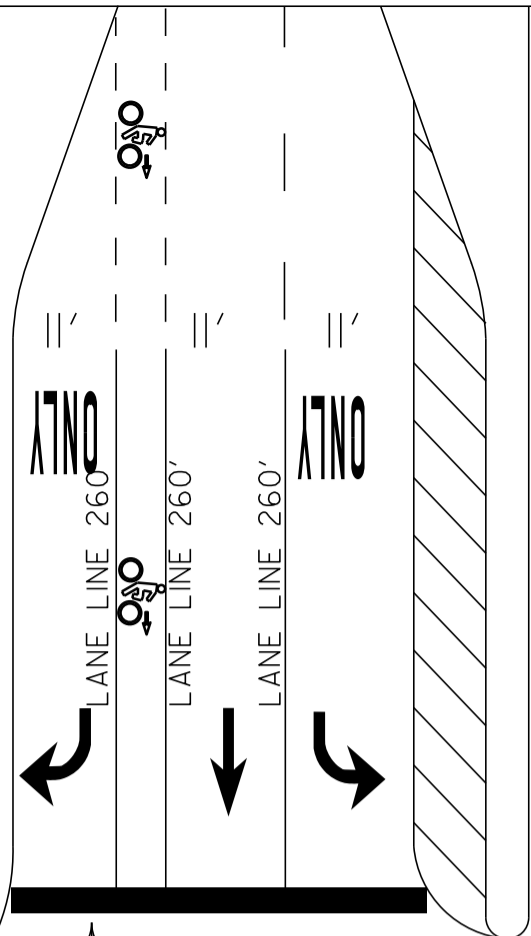
- PEDESTAL POST
- PEDESTRIAN SIGNAL
- CONTROL BOX
- LOOP DETECTION
- JUNCTION BOX
- PULL BOX
- = LEFT TURN YIELD OR GREEN
- =
- STANCHION

MS # 411



VT 10A EAST

I-91 SB ON RAMP



12' | 12'

STOP BAR 46'

STOP BAR 20'

STOP BAR 22'

LANE LINE 100'



12'

12'

20'

18'

18'

CROSSWALK 71'

STOP BAR 25'

I-91 SB OFF RAMP



12'

12'

12'

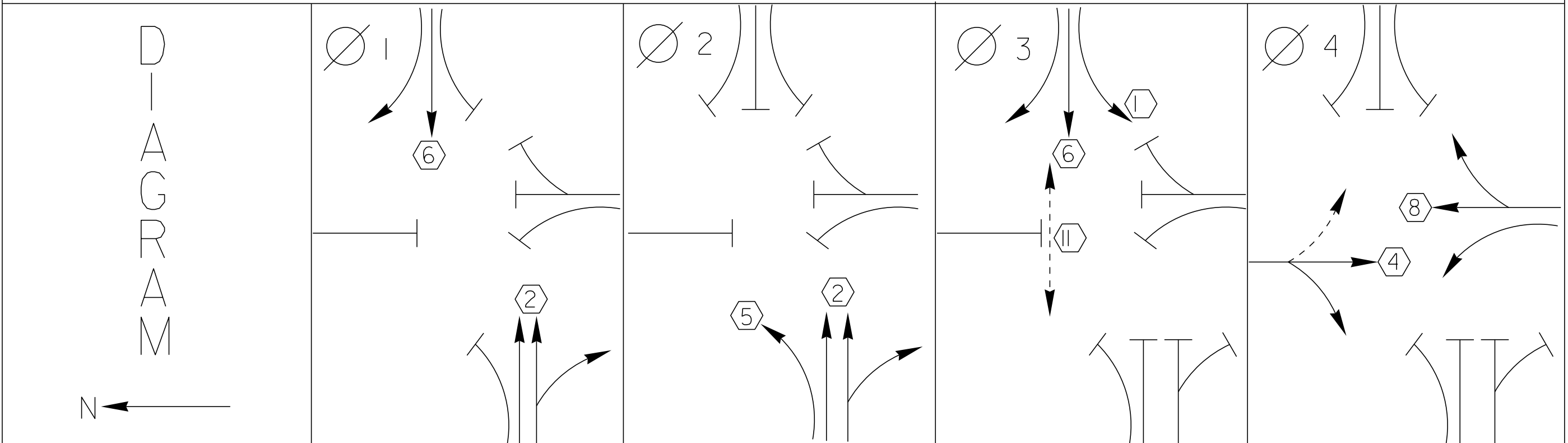
LANE LINE 310'

STOP BAR 49'

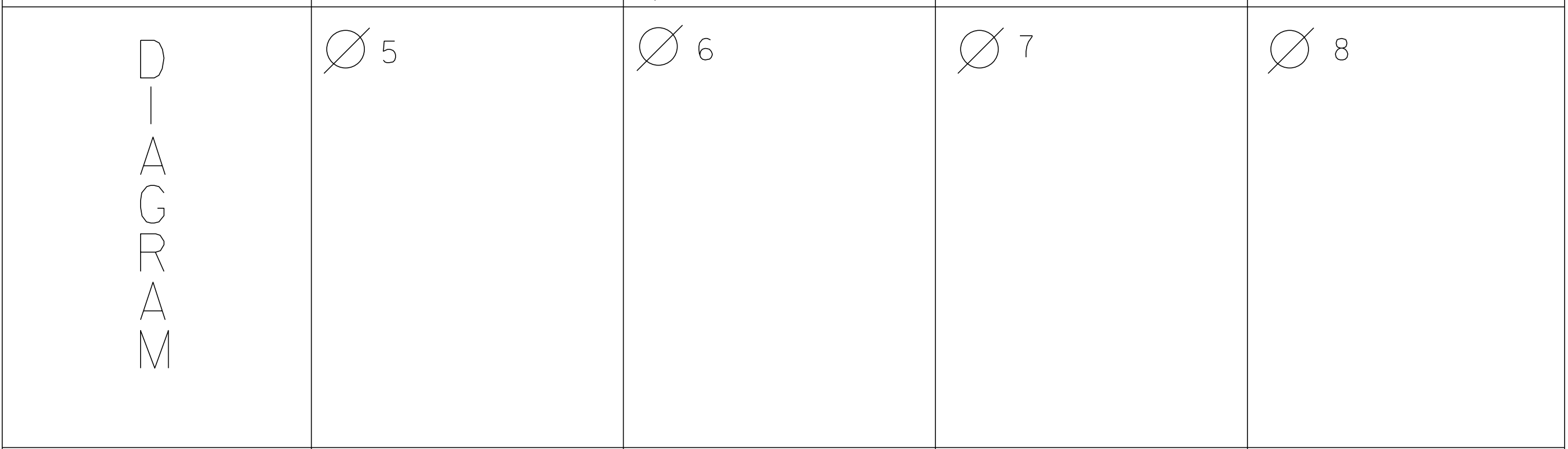
US 5 SOUTH

US 5 NORTH

NOT TO SCALE



TIMING	G = Y =	G = Y =	G = Y =	G = Y =
--------	------------	------------	------------	------------



TIMING	G = Y =	G = Y =	G = Y =	G = Y =
--------	------------	------------	------------	------------

	PROTECTED TURNS		PERMITTED TURNS PEDESTRIAN	CYCLE LENGTH, C = _____ S
--	--------------------	--	----------------------------------	---------------------------



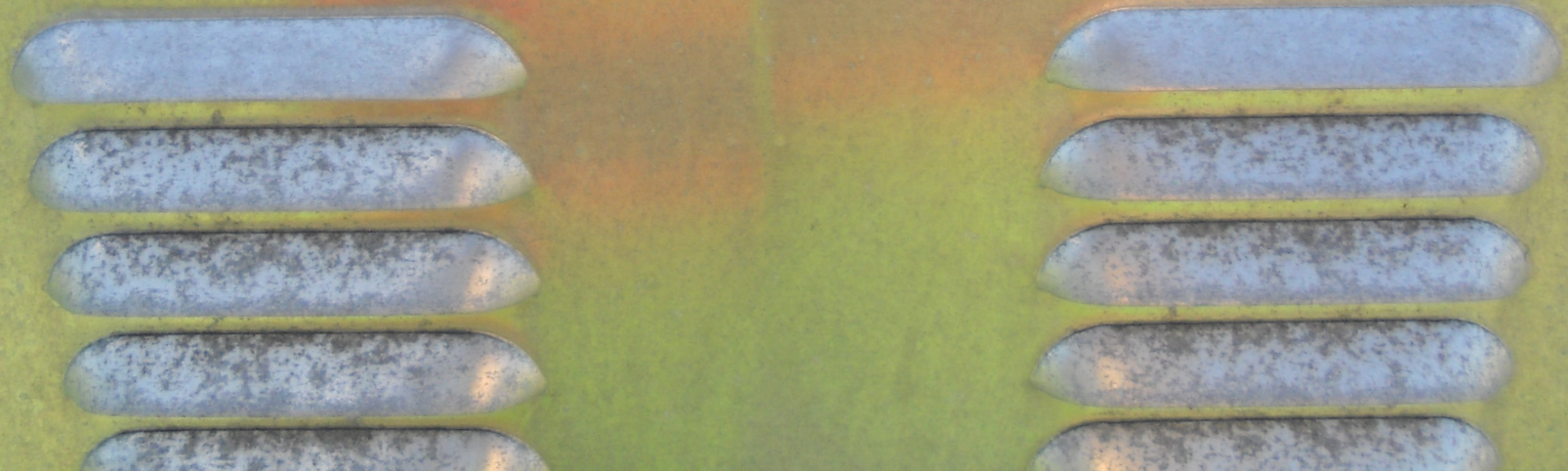
PROPERTY OF:
VT. AGENCY OF TRANS.
MAINTENANCE DIV.

IN EMERGENCY CALL:
DIST. TRANS. OFFICE

205 5888

NIGHTS & WEEKENDS: 457 1416

INTERSECTION NO. 05 411



WARNING
 DO NOT OPERATE
 INTERSECTION
 WITHOUT CONFLICT
 MONITOR IN PLACE
 WARNING
 120 VOLTS
 WARNING

STOP
 MAIN ON
 OFF
 FLASH
 STOP TRUNC
 ON
 OFF

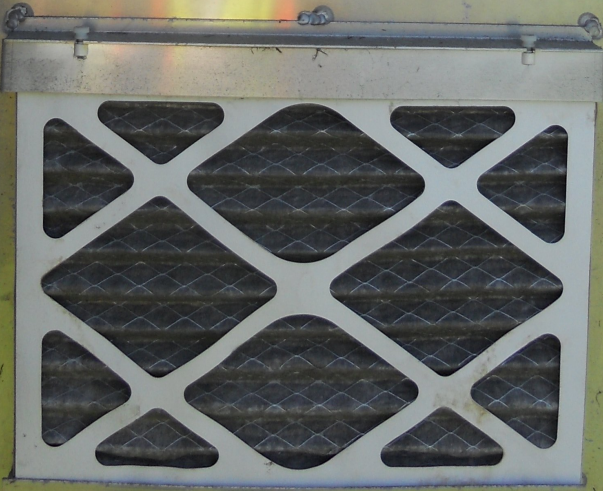
120 VOLT SWG
 01/A 02/B 03/C 04/D
 05 06 07 08
 09/A 10/B 11/C 12/D
 02 04 06 08

STATE OF MISSISSIPPI
 MISSISSIPPI DEPARTMENT OF TRANSPORTATION
 DIVISION OF HIGHWAYS
 R.O. #2004-48-011

EDGE	2	4	6	8
FRONT	1	2	3	4
TRUCK	20	40	60	80
VEL	21*	42*	63*	84*
PG	28	56*	84*	112*
DR. ADJ.				
VEL. ADJ.				
PG. ADJ.				
WAVE				
DRYTY				
WAVE				

LOOP WORK-UP
 LOOP LANE PHASE CORRECT PUL
 4 Lane D 4 002912-1 4 1
 28 2 002914-1 4 2
 28 2 002915-1 4 14
 28 2 002916-1 4 14

TURNED ON 7-18-95



tsc
MODEL
200
REC
YEL
GRN

MODEL
200
YEL
GRN

MODEL
200
SOUTH
200

tsc
MODEL 30
MODEL
200
YEL
GRN
EAST
200

tsc
MODEL 300
RED
YEL
GRN
200

tsc
M EL 304-15
D 1
D 2
UBE
204

LS9

LS10

LS12

LS14

LS15

LS16

MODEL
200
YEL
GRN

FR1

FR2

FR3

FR4

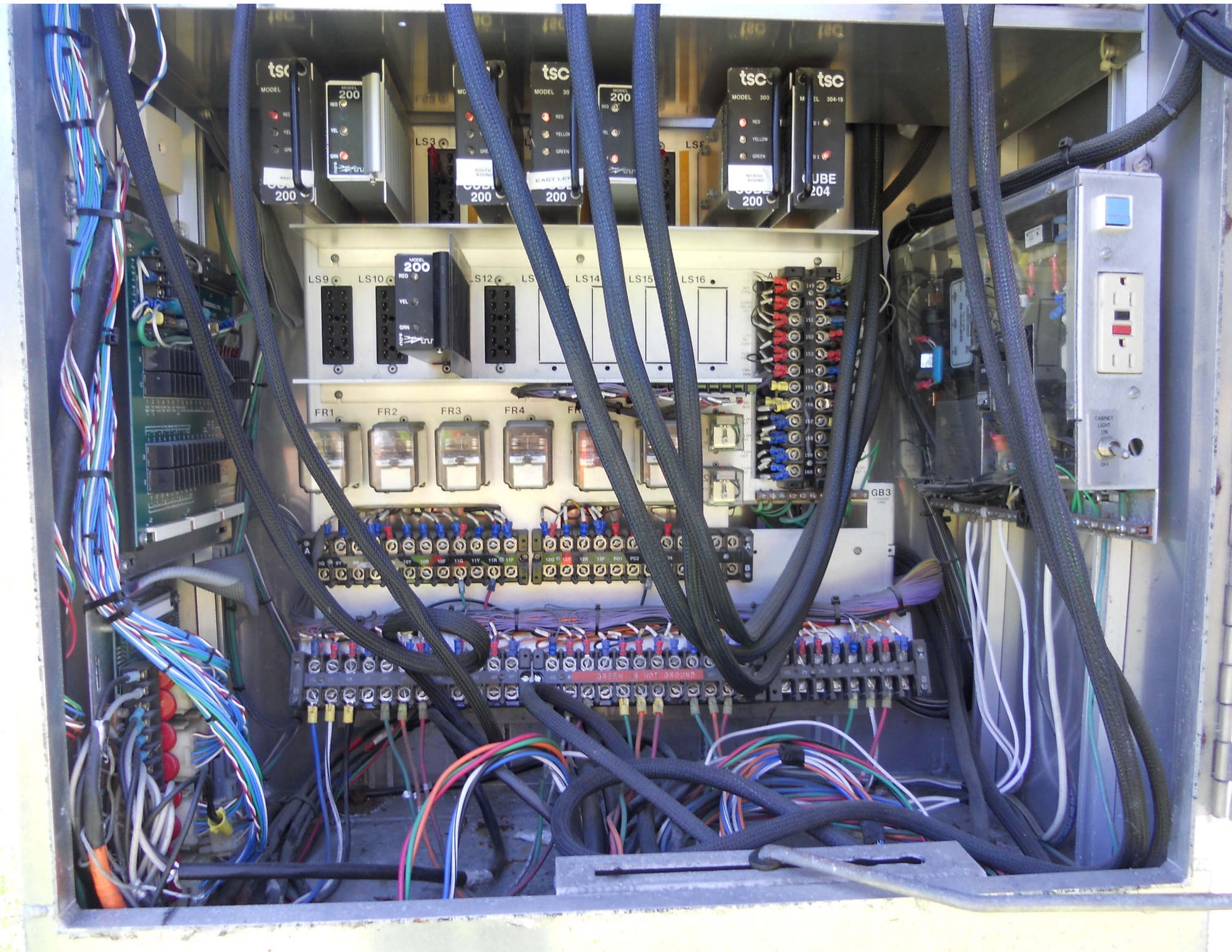
FR5

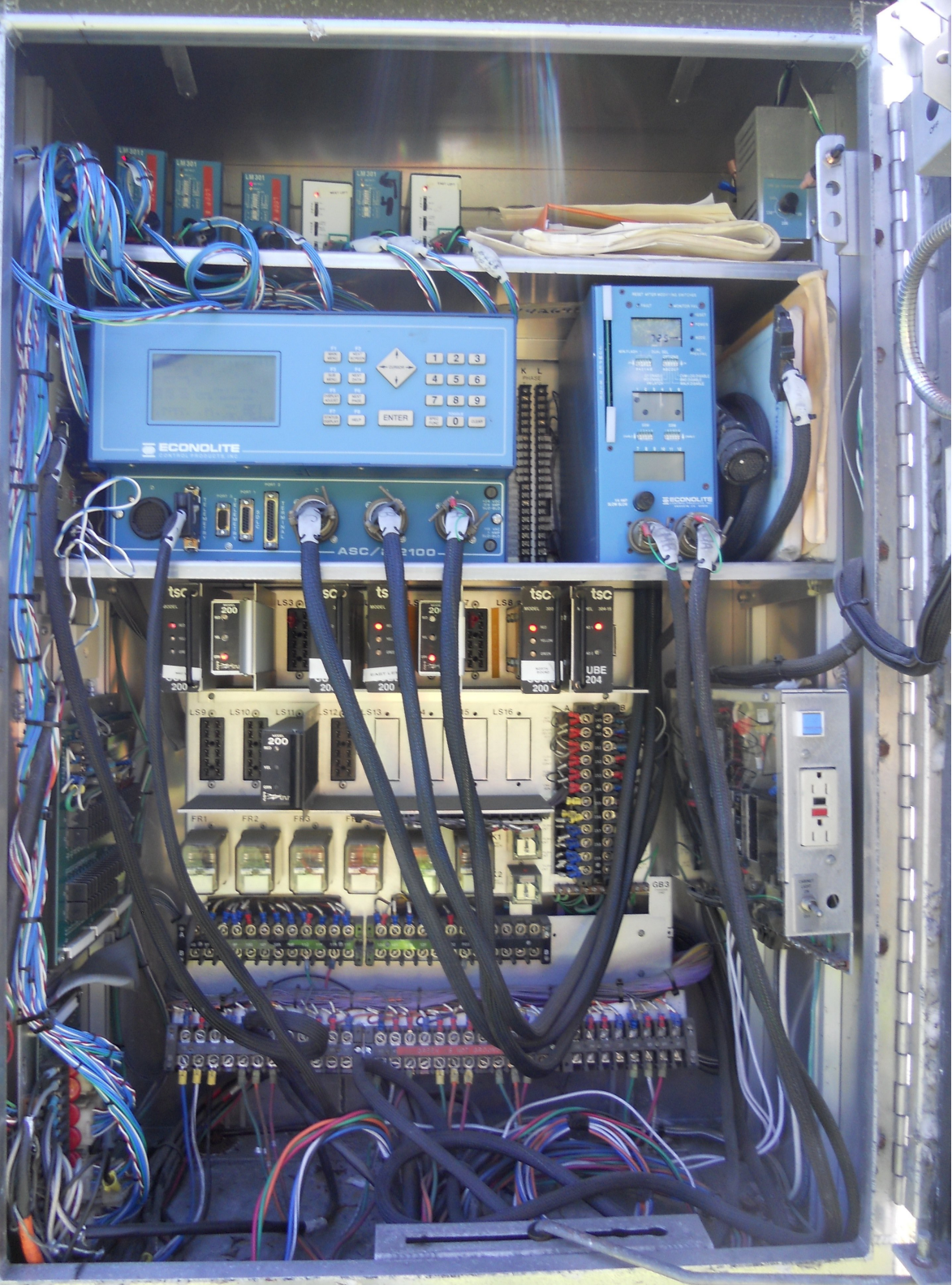
GB3

CABINET
LIGHT
ON
OFF

10V 10R 10P 10F 11V 11R 11F 12V 12R 12P 12F PD1 PD2

GREEN IS NOT GROUND







elster

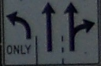
12000

elster
TYPE R280
GMP
E14678592
CL200, 240V, 3W, 60Hz FM 25 Washhour Meter KH1.0 TA 30
LAN 10 076 0007298082
ZFCWMA80000-05
R4 1-1204





ONLY





NORTH	EAST
VERMONT 91	VERMONT 10A
↑	↑
SOUTH	SOUTH
VERMONT 91	VERMONT 5
←	→

ONLY











TO
SOUTH NORTH
91 91
↑ →
NORTH EAST
5 VERMONT
← →
10A

ONLY





EXIT 100A
FIELD
ON ONLY





LEFT TURN
YIELD
ON GREEN





SPEED
LIMIT
30

VT
1988









SOUTH NORTH SOUTH
55 91
← ↑ →

ONLY

ONLY







LEFT TURN
YIELD
ON GREEN



NORTH
5





















78 KS 106A
14 IN 3 3/4

SIGNAL HOOK-UP: ASC/2-2100 CONTROLLER ASSEMBLY
 US-5/VT-10 @ Ramp B & D
 Norwich, VT Site 1

S.O.#2054-48-011

SIG#	2	4	6	8						
PHASE	1	2	3	4	5	6	7	8		
OVRLP									A	B
GRN		2G		4G		6G		8G		
YEL		2Y*		4Y		6Y*		8Y		
RED		2R		4R*		6R		8R*		
GRN ARR										
YEL ARR										
RED ARR										
WALK										
DON'T WALK										

NOTE: * = FLASH COLOR FOR THAT SIGNAL

LOOP HOOK-UP:

LOOP#	LANE	PHASE	CONNECT TO:
4	Ramp D	4	SDITB1-7 & 8
8	NB	8	SDITB1-9 & 10
8A	EB	8	SDITB1-13 & 14
8B	SB	8	SDITB1-15 & 16

18-95

Coordination Patterns

```

-----
Pattern 1
Cycle Length . . . 70  COS . . . . . 111
Offset . . . . . 5
Vehicle Permissive . . [1] 0 [2] 0
Vehicle Perm 2 Displacement 0 Phase Reservice. . NO
Splits: Phase 1- 20 2- 29 3- 0 4- 21
          Phase 5- 20 6- 29 7- 0 8- 21
          Phase 9- 0 10- 0 11- 0 12- 0 Split Sum: 0
Split Extension/Ring [1] 0 [2] 0
Split Demand Pattern [1] 0 [2] 0
XRT Pattern. . . 0
Phase Number: 1 2 3 4 5 6 7 8 9 10 11 12
Coord Phases . . . X . . . X . . . . .
Veh Recall . . . . . . . . . . .
Veh Max Recall . . X . . . X . . . . .
Ped Recall . . . . . . . . . . .
Veh Omit . . . . . . . . . . .
Alt Sequence . . A: . B: . C: . D: . E: . F: .
-----
    
```

```

-----
Pattern 2
Cycle Length . . . 68  COS . . . . . 211
Offset . . . . . 21
Vehicle Permissive . . [1] 0 [2] 0
Vehicle Perm 2 Displacement 0 Phase Reservice. . NO
Splits: Phase 1- 15 2- 29 3- 0 4- 24
          Phase 5- 15 6- 29 7- 0 8- 24
          Phase 9- 0 10- 0 11- 0 12- 0 Split Sum: 0
Split Extension/Ring [1] 0 [2] 0
Split Demand Pattern [1] 0 [2] 0
XRT Pattern. . . 0
Phase Number: 1 2 3 4 5 6 7 8 9 10 11 12
Coord Phases . . . X . . . X . . . . .
Veh Recall . . . . . . . . . . .
Veh Max Recall . . X . . . X . . . . .
Ped Recall . . . . . . . . . . .
Veh Omit . . . . . . . . . . .
Alt Sequence . . A: . B: . C: . D: . E: . F: .
-----
    
```

```

-----
Pattern 3
Cycle Length . . . 88  COS . . . . . 311
Offset . . . . . 27
Vehicle Permissive . . [1] 0 [2] 0
Vehicle Perm 2 Displacement 0 Phase Reservice. . NO
Splits: Phase 1- 26 2- 31 3- 0 4- 31
          Phase 5- 26 6- 31 7- 0 8- 31
          Phase 9- 0 10- 0 11- 0 12- 0 Split Sum: 0
Split Extension/Ring [1] 0 [2] 0
Split Demand Pattern [1] 0 [2] 0
XRT Pattern. . . 0
Phase Number: 1 2 3 4 5 6 7 8 9 10 11 12
Coord Phases . . . X . . . X . . . . .
Veh Recall . . . . . . . . . . .
Veh Max Recall . . X . . . X . . . . .
Ped Recall . . . . . . . . . . .
Veh Omit . . . . . . . . . . .
Alt Sequence . . A: . B: . C: . D: . E: . F: .
-----
    
```


NIC Program Steps

Step	Program	Step Begins	Pattern	Override
1	1	0600	2	NO
2	1	0930	1	NO
3	1	1430	3	NO
4	1	1800	1	NO
5	1	2200	0	NO

TOD Program Steps

 Step 1 Program 1 Step Begins 0600

Flash. Dimming Enable.
 Red Rest Alt Veh Extension
 Spare 5. Det Log Enable.
 Spare 3. Spare 4
 Type 0 Dly Enable. . . Spare 2
 Det Diag Plan. . . . 0

Phase Number

	1	2	3	4	5	6	7	8	9	10	11	12
Max 2 Enable	X	X	.	X	X	X	.	X
Max 3 Enable
Veh Recall
Veh Max Recall	X	.	.	.	X
Ped Recall
Cond Service Inhibit.
Phase Omit
Special Function

A B C D E F

Alt Sequence

Step 2 Program 1 Step Begins 0930

Flash. Dimming Enable.
 Red Rest Alt Veh Extension
 Spare 5. Det Log Enable.
 Spare 3. Spare 4
 Type 0 Dly Enable. . . Spare 2
 Det Diag Plan. . . . 0

Phase Number

	1	2	3	4	5	6	7	8	9	10	11	12
Max 2 Enable
Max 3 Enable
Veh Recall
Veh Max Recall	X	.	.	.	X
Ped Recall
Cond Service Inhibit.
Phase Omit
Special Function

A B C D E F

Alt Sequence

TOD Program Steps

 Step 3 Program 1 Step Begins 1430

Flash. Dimming Enable.
 Red Rest Alt Veh Extension
 Spare 5. Det Log Enable.
 Spare 3. Spare 4
 Type 0 Dly Enable. . . Spare 2
 Det Diag Plan. . . . 0

Phase Number

	1	2	3	4	5	6	7	8	9	10	11	12
Max 2 Enable
Max 3 Enable	X	X	.	X	X	X	.	X
Veh Recall
Veh Max Recall	X	.	.	.	X
Ped Recall
Cond Service Inhibit.
Phase Omit
Special Function

A B C D E F

Alt Sequence

Step 4 Program 1 Step Begins 1800

Flash. Dimming Enable.
 Red Rest Alt Veh Extension
 Spare 5. Det Log Enable.
 Spare 3. Spare 4
 Type 0 Dly Enable. . . Spare 2
 Det Diag Plan. . . . 0

Phase Number

	1	2	3	4	5	6	7	8	9	10	11	12
Max 2 Enable
Max 3 Enable
Veh Recall
Veh Max Recall	X	.	.	.	X
Ped Recall
Cond Service Inhibit.
Phase Omit
Special Function

A B C D E F

Alt Sequence

TOD Program Steps

Step 5 Program 1 Step Begins 2200

Flash.	X	Dimming Enable.
Red Rest	Alt Veh Extension
Spare 5.	Det Log Enable.
Spare 3.	Spare 4
Type 0 Dly Enable.	Spare 2
Det Diag Plan.	0	

	Phase Number											
	1	2	3	4	5	6	7	8	9	10	11	12
Max 2 Enable
Max 3 Enable
Veh Recall
Veh Max Recall
Ped Recall
Cond Service Inhibit.
Phase Omit
Special Function

Alt Sequence	A	B	C	D	E	F
------------------------	---	---	---	---	---	---
