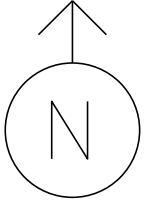


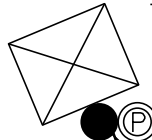
MS # 318



VT 30 NORTH

- PEDESTAL POST
- PEDESTRIAN SIGNAL
- CONTROL BOX
- LOOP DETECTION
- PULL BOX
- LUMINAIRE
- = NO TURN ON RED

VT 4A WEST



ONLY



1

1

2

2

2

2

1

1

P

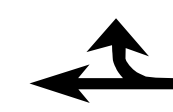
O

F

2 ONLY



2



2



ONLY

2

F

P

O

PB

PB

F

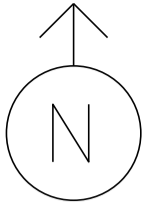
PB

VT 30 SOUTH

VT 4A EAST

1

MS # 318



VT 30 NORTH

11'

11'

14'

LANE LINE 140'

ONLY



STOP BAR 30'

CROSSWALK 70'

VT 4A WEST

16'

10'

ONLY



LANE LINE 160'

11'



CROSSWALK 48'

STOP BAR 21'

STOP BAR 21'

LANE LINE 65'

11'



ONLY

10'

11'

STOP BAR 14'

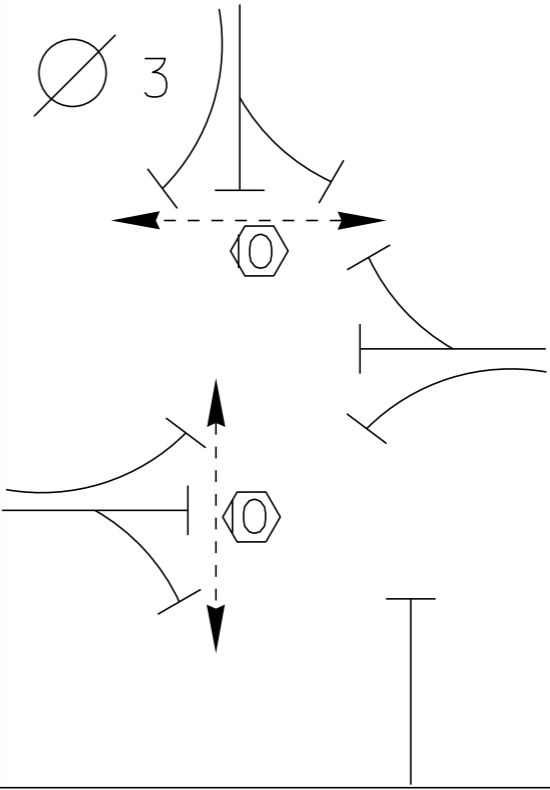
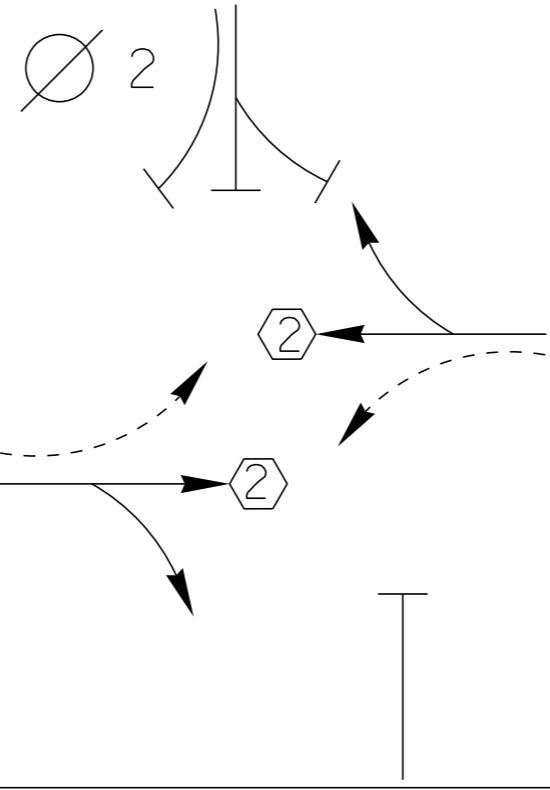
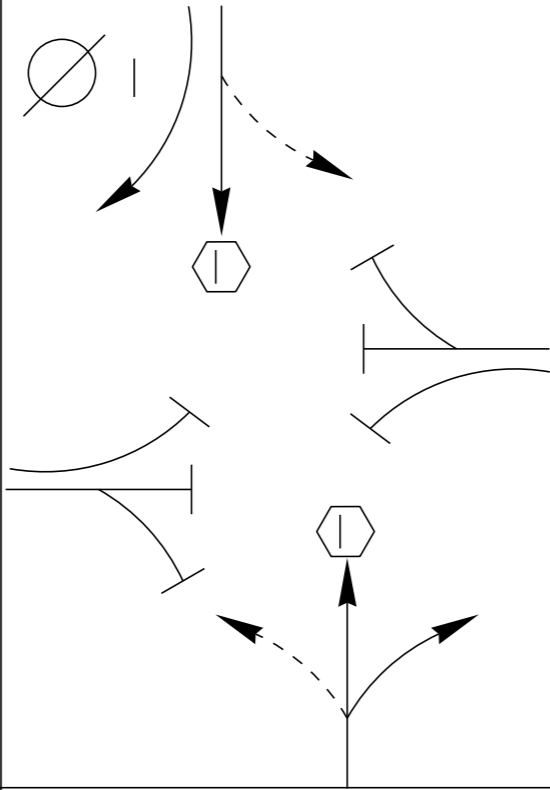
12'

11'

VT 30 SOUTH

VT 4A EAST

D  
I  
A  
G  
R  
A  
M



TIMING

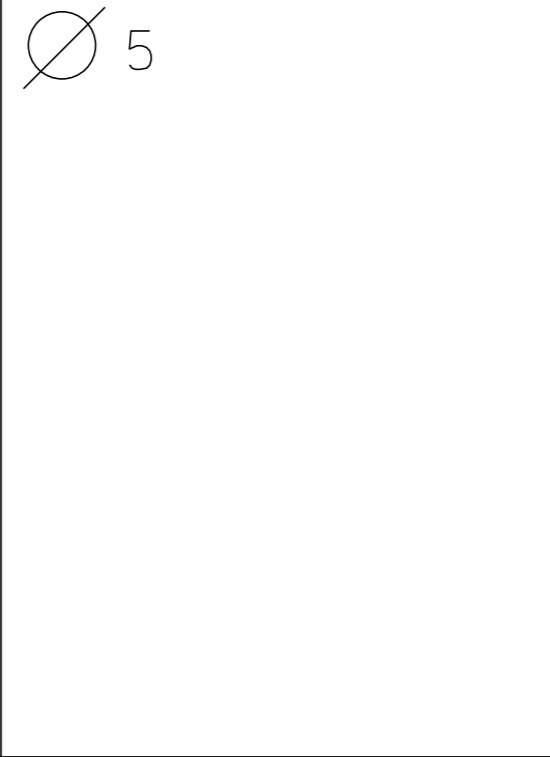
G =  
Y =

G =  
Y =

G =  
Y =

G =  
Y =

D  
I  
A  
G  
R  
A  
M



TIMING

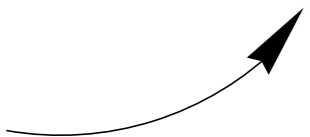
G =  
Y =

G =  
Y =

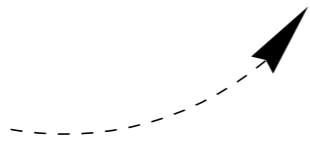
G =  
Y =

G =  
Y =

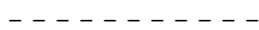
PROTECTED  
TURNS



PERMITTED  
TURNS



PEDESTRIAN



CYCLE LENGTH, C = \_\_\_\_\_ S



ON RAW

**WARNING**

DO NOT OPERATE  
CABINET WITHOUT  
CONFLICT MONITOR UNIT

**DANGER**

115 VOLTS A.C.

1840-46-1

5

CONTROLLER  
ON OFF  
AUTO  
FLASH  
STOP  
PARK  
AUTO  
ON OFF

VENT TEST SW  
D1A D1B D1C D1D  
D2 D3 D4 D5  
D6 D7 D8

TEST SW  
D1A D1B D1C D1D  
D2 D3 D4 D5



**SERIES 900 TS2**

Controller TIMING FREE    Monitor NO DATA    Cabinet NO DATA    System ONLINE

**OPERATION**

- PRESS ANY KEY TO ACTIVATE DISPLAY
- PRESS MAIN MENU (DSIP CTRL) FOR MAIN MENU
- PRESS # KEY OF MAIN MENU ITEM TO SELECT
- PRESS ALT FCH TWICE FOR HELP. B TO END HELP

**FUNCTIONS**

ENTER ENTER DATA OR EXECUTE COMMAND  
 ESC ESCAPE TO PREVIOUS SCREEN/MENU  
 MAIN/DSIP IF NOT AT MAIN MENU, DISPLAY MAIN MENU IMMEDIATELY  
 IF AT MAIN MENU, TOGGLE BACKLIGHT ON/OFF

**ALTERNATE FUNCTIONS**

PRESS ALT FCH, THEN ONE OF THE FOLLOWING:  
 ESC CLEAR ENTRY  
 ALT FCH TOGGLE HELP  
 MAIN/DSIP TOGGLE BACKLIGHT  
 B LOG OFF

**NAZTEC, INC.**  
 NEMA TRAFFIC CONTROLLER  
 880-9111P  
 101-1-A  
 05-1285

SYSTEM P-A  
 PC/PRINT P-2  
 SDLC P-1  
 ENET LINK TX P-3  
 FSK P-3  
 Fibertrack N34

115VAC-1A  
 24VDC-1/2

A B C D

RESET AFTER MODIFYING SWITCHES

FAULT MONITOR FAIL  
 RESET  
 POWER  
 MODE  
 INC. PREV. FAIL

WIN. FLASH DUAL SEL. OPTIONS  
 8421AB ABCDEF  
 ON ENABLE NO ENABLE W. LATCH ON LOG DISABLE  
 1 2 3 4 5 6

7 8 9 10 11 12

ESM 1 3 5 7 9  
 ENABLE

ESM 7 8 9 10 11 12  
 ENABLE

1 AMP

**ECONOLITE**  
 CONTROL PRODUCTS

16.5

MODE  
 115VAC  
 24VDC  
 FUSE  
 PRESET

So

MODE  
 115VAC  
 24VDC  
 FUSE  
 PRESET

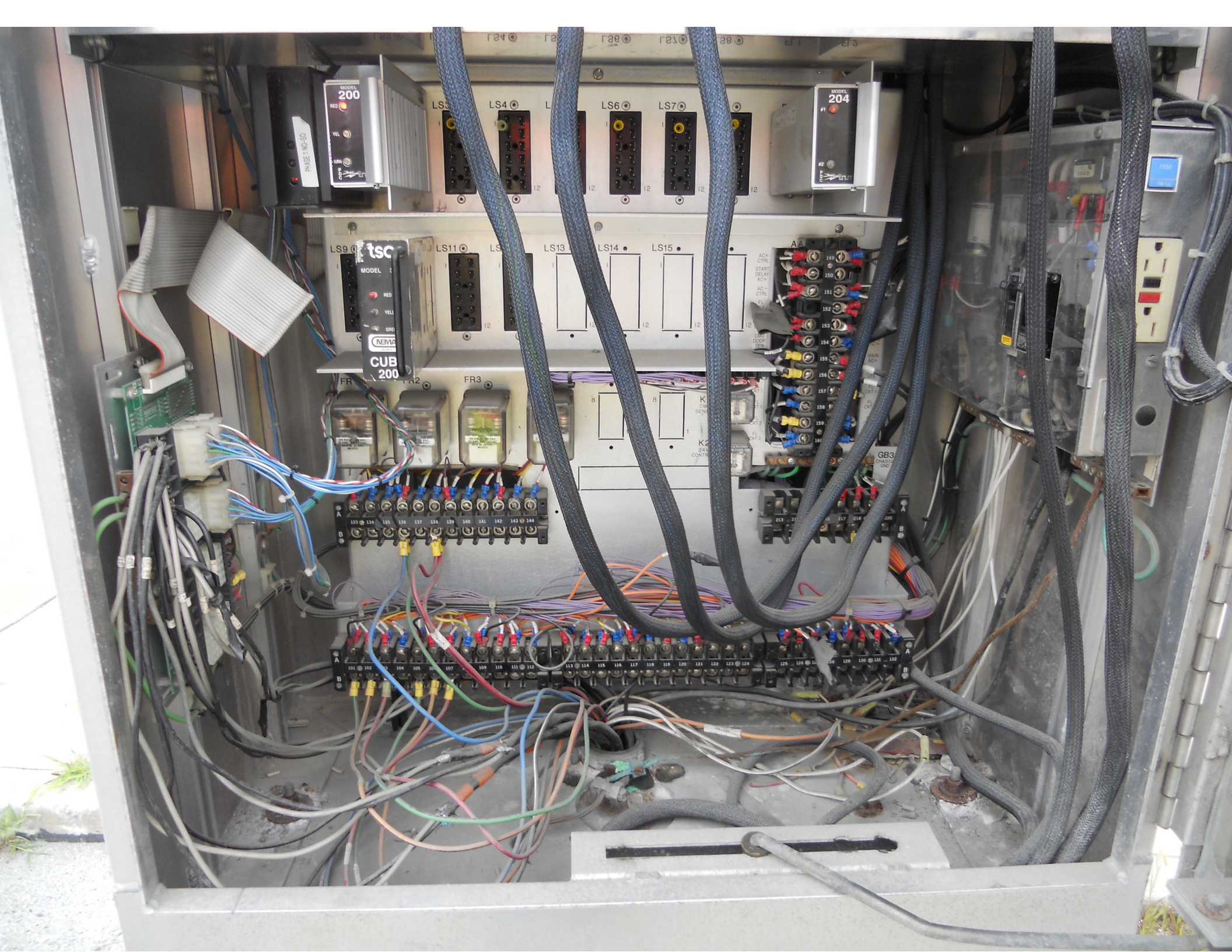
ADVANTEC

MODE  
 115VAC  
 24VDC  
 FUSE  
 PRESET

So

MODE  
 115VAC  
 24VDC  
 FUSE  
 PRESET

115VAC  
 24VDC  
 FAN ON TEMP  
 ECONOLITE 84620





359  
CITGO

Mobil

Thank You for Your Business

ONLY



ONLY

Mobil Mobil

3.39

NO TURN ON RED

REAL ESTATE

190



NO  
TURN  
ON  
RED













COLDWELL  
BANKER  
WATSON REALTY

CASTLET  
TUESDA  
JUNE 5



WEST	EAST
VERMONT	VERMONT
4A	4A
←	→
NORTH	TO
VERMONT	4
30	↑
↑	↑

NO STOPPING  
STOP HERE  
AHEAD











ONLY

LEFT TURN ONLY

RIGHT TURN ONLY

MILK PER GALLON 3.39

GO

3.59

NO TURN ON RED

3.53

DEWOTE POWER



NO  
TURN  
ON  
RED

MILK  
PER GALLON  
3.39

CITGO

30 30  
41 4

359

CASTLETON CORNERS DELI

0041  
1103  
0018





EAST VERMONT 4A ←  
WEST VERMONT 4A →  
SOUTH VERMONT 30 ↑

Kinney DRUGS



Century 21  
Bird Real Estate  
Castleton Concerts  
MAYORS' DINNER  
June 8 - August 14

Mobil

CTGO



Mobil

Mobil  
35.9

ONLY

CASTLETON DRIVERS DELI

TRAFFIC LIGHT  
STOP



30 30  
40 40  
← →

COLDWELL BANKER

REAL ESTATE Information Center

CATTLETON CONC. CO.  
TUESDAYS AT 7 PM  
ONE 878 THE 11

30

















Date: 08/09/2012

Timing Data:

Phase	1	2	3	4	5	6	7	8	9
Phases in use	x	x							
Min Green	8	8	0	0	0	0	0	0	0
Walk	0	0	0	0	0	0	0	0	0
Ped Clr	0	0	0	0	0	0	0	0	0
Veh Ext	4	3	0	0	0	5	0	2	0
MAX 1	16	16	0	0	0	0	0	0	0
MAX 2	16	16	0	0	0	0	0	0	0
MAX 3	0	0	0	0	0	0	0	0	0
Yellow	4	4	0	0	0	0	0	0	0
All Red	2	2	0	0	0	0	0	0	0
Recall to Max									

Coordination Patterns: ACS3/Naztec NOT COORDNATED

Pattern 1									
Cycle Length	Offset		COS						
Splits	Ph 1		Ph 2		Ph 3		Ph 4		
	Ph 5		Ph 6		Ph 7		Ph 8		
	Ph 9		Ph 10		Ph 11		Ph 12		
Pattern 2(21)									
Cycle Length	Offset		COS		211				
Splits	Ph 1		Ph 2		Ph 3		Ph 4		
	Ph 5		Ph 6		Ph 7		Ph 8		
	Ph 9		Ph 10		Ph 11		Ph 12		
Pattern 3									
Cycle Length	Offset		COS		311				
Splits	Ph 1		Ph 2		Ph 3		Ph 4		
	Ph 5		Ph 6		Ph 7		Ph 8		
	Ph 9		Ph 10		Ph 11		Ph 12		

Day Plan [1]

Event	Action Plan	Step Begins
1	54	0600
2	55	2200
3	55	0000

Action Plan

Action Plan	Pattern
1	1
2 to 53	0
54	254-FREE
55	255-FLASH