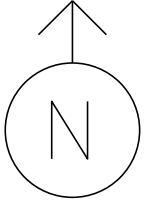


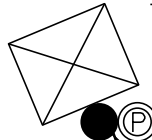
MS # 318



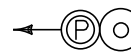
VT 30 NORTH

- PEDESTAL POST
- PEDESTRIAN SIGNAL
- CONTROL BOX
- LOOP DETECTION
- PULL BOX
- LUMINAIRE
- = NO TURN ON RED

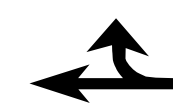
VT 4A WEST



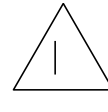
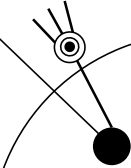
ONLY



2 ONLY



ONLY



VT 4A EAST

VT 30 SOUTH