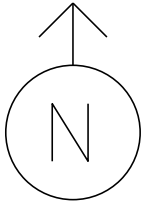


MS # 316

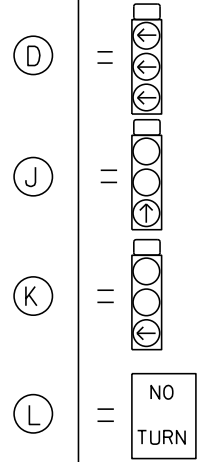


⊙ PEDESTAL POST

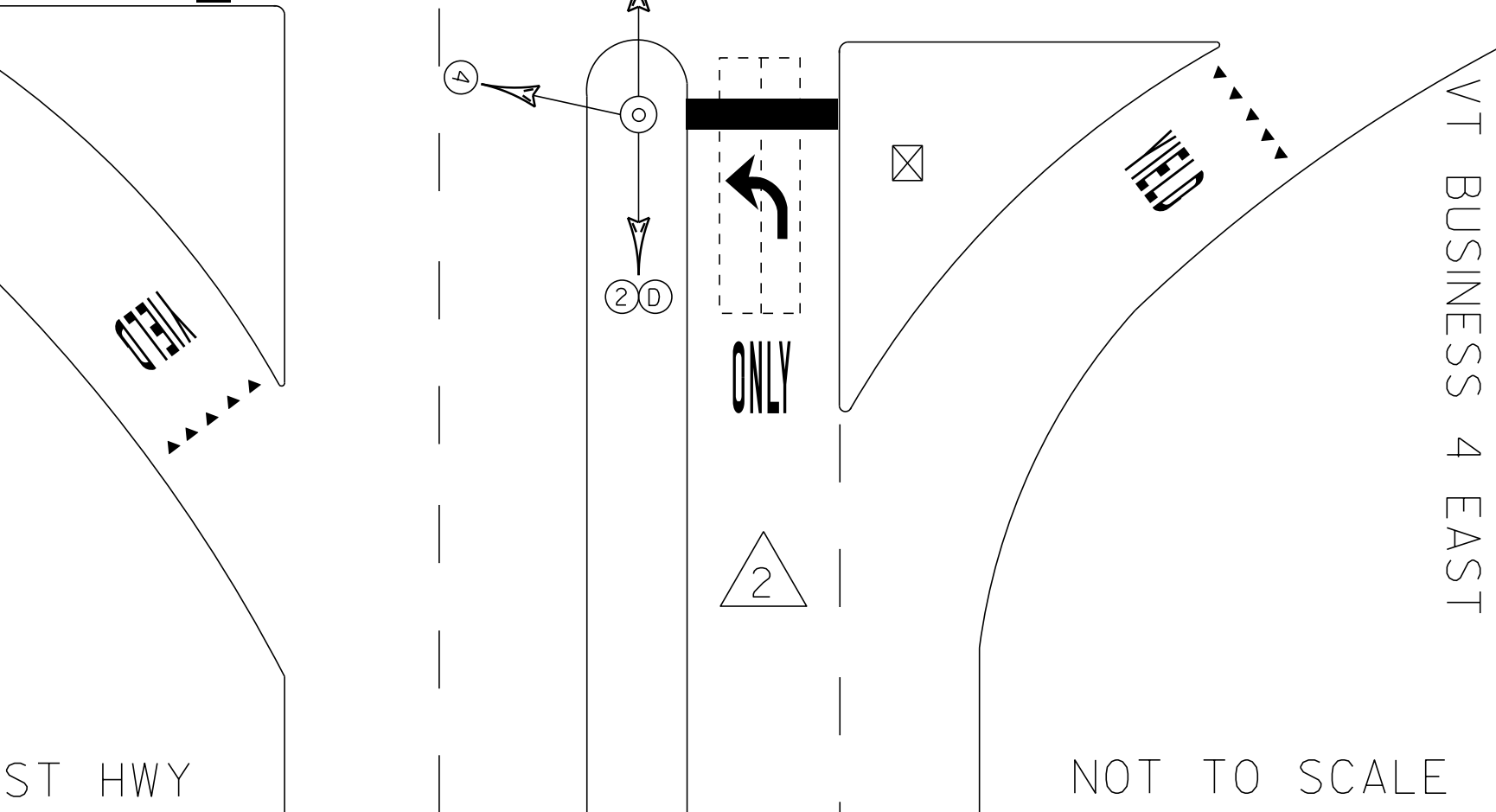
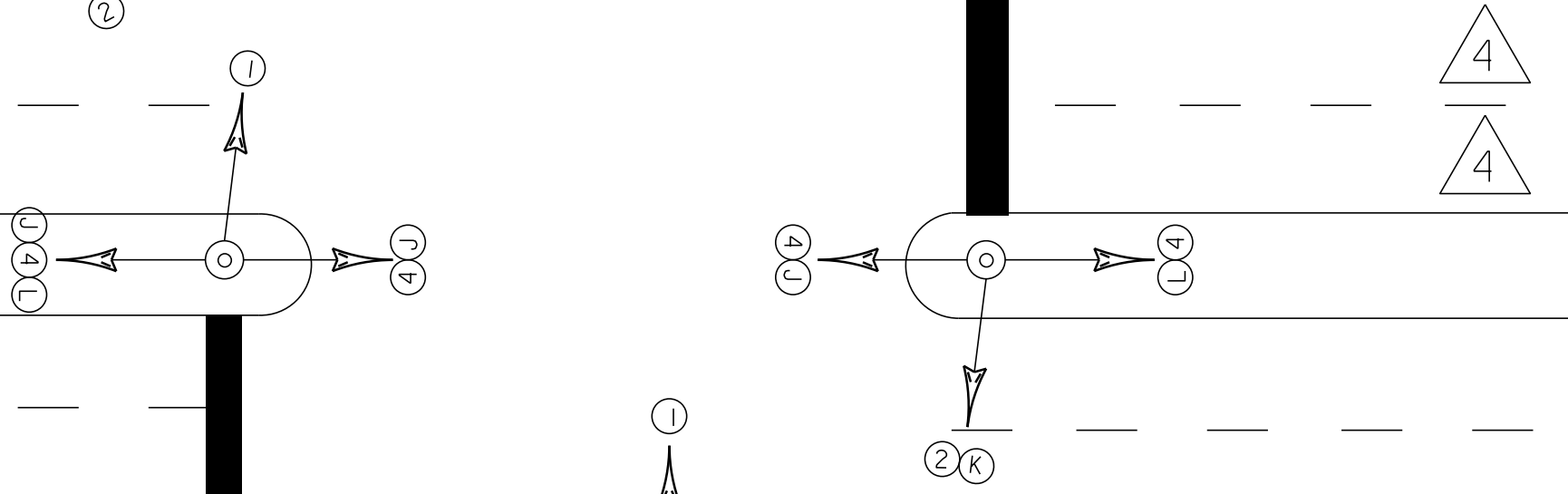
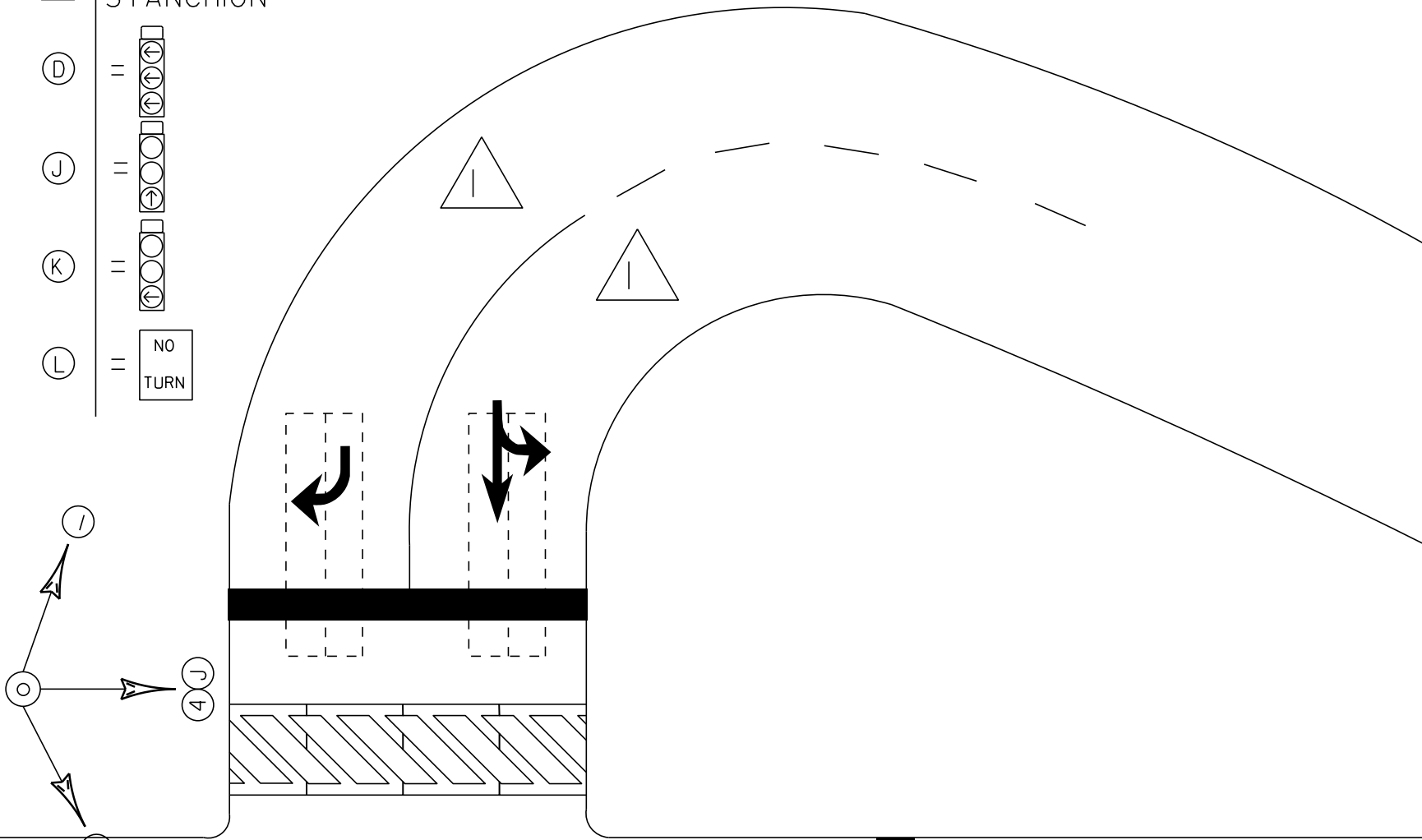
⊠ CONTROL BOX

⋯ LOOP DETECTION

●● STANCHION



VT 4A WEST

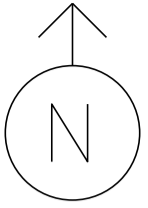


RUTLAND ST HWY

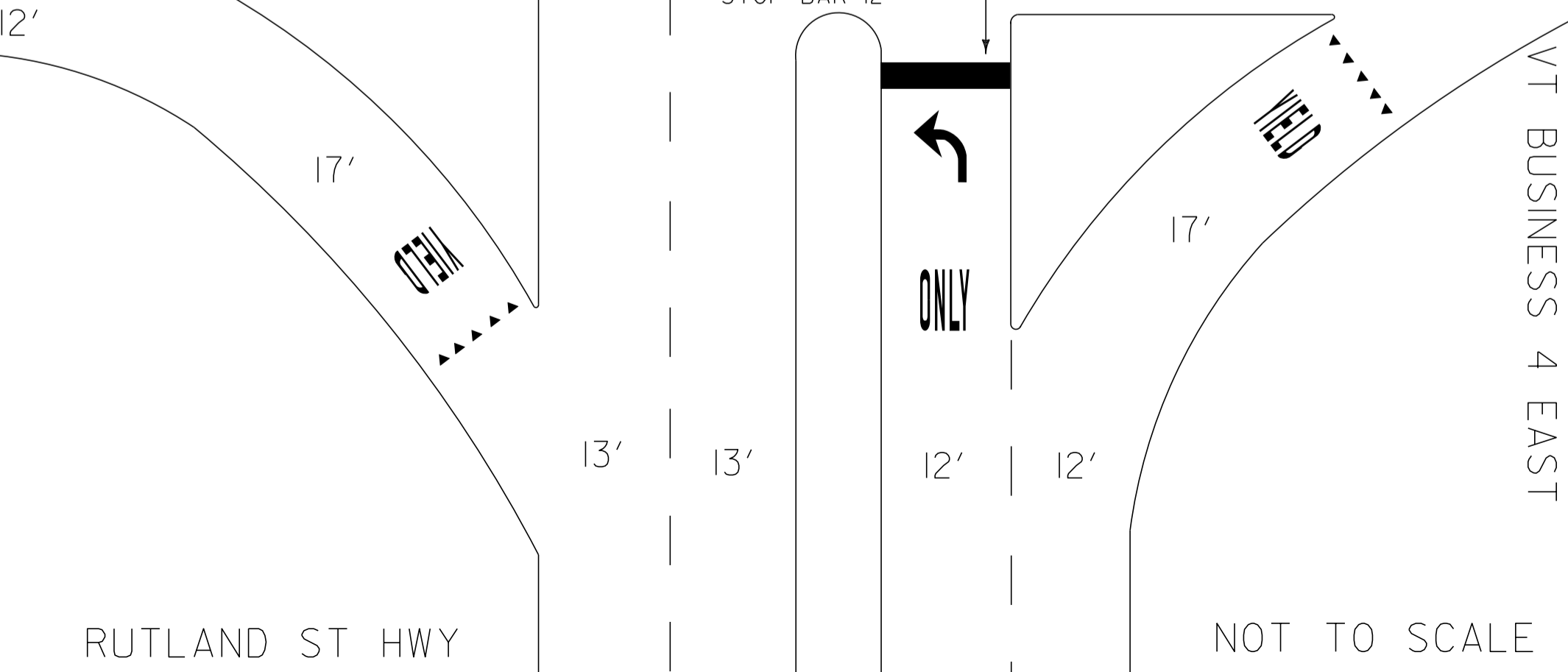
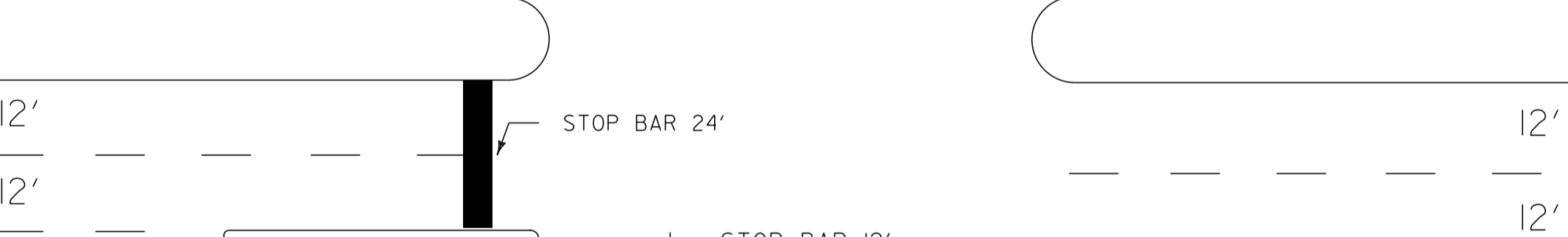
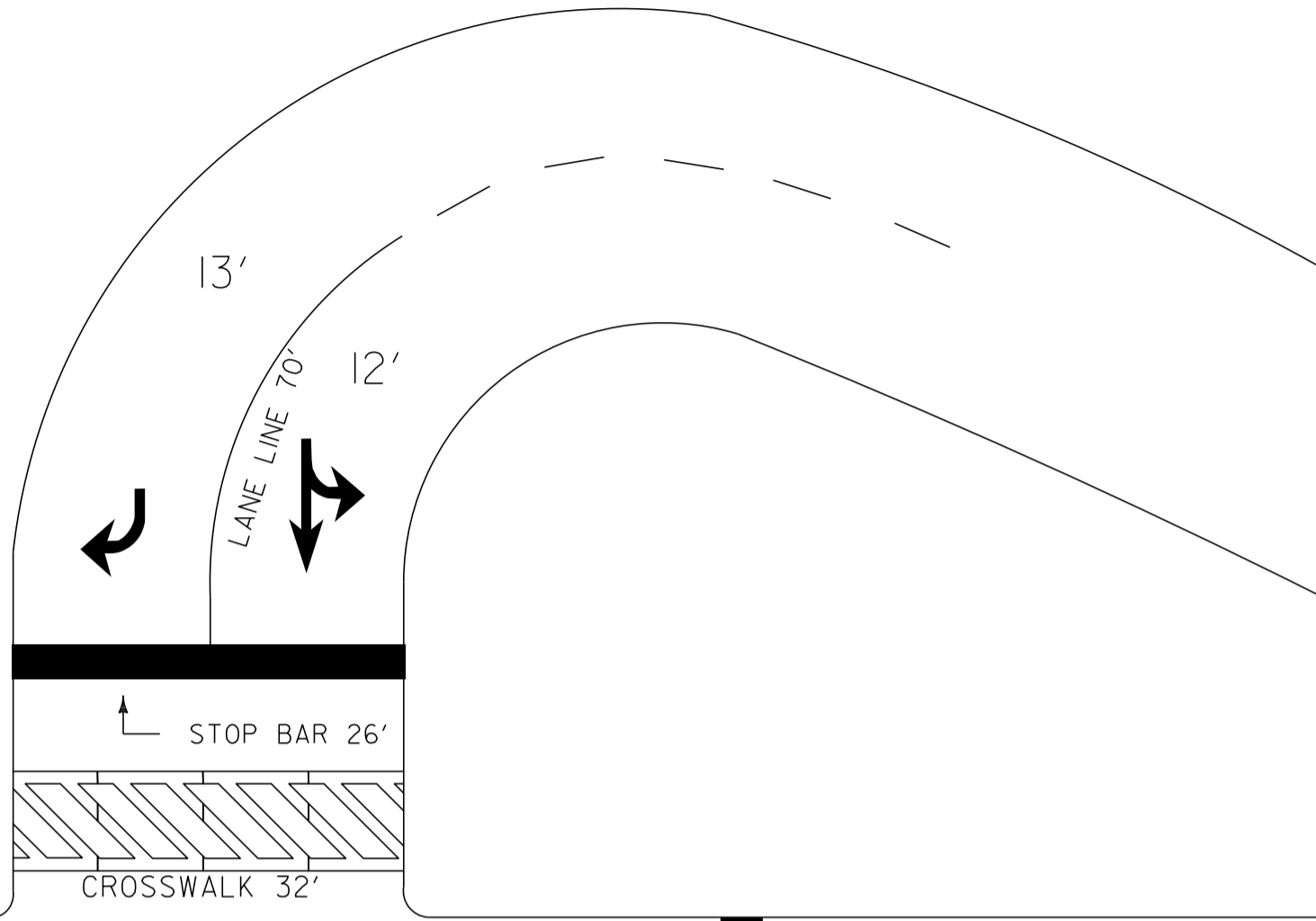
VT BUSINESS 4 EAST

NOT TO SCALE

MS # 316



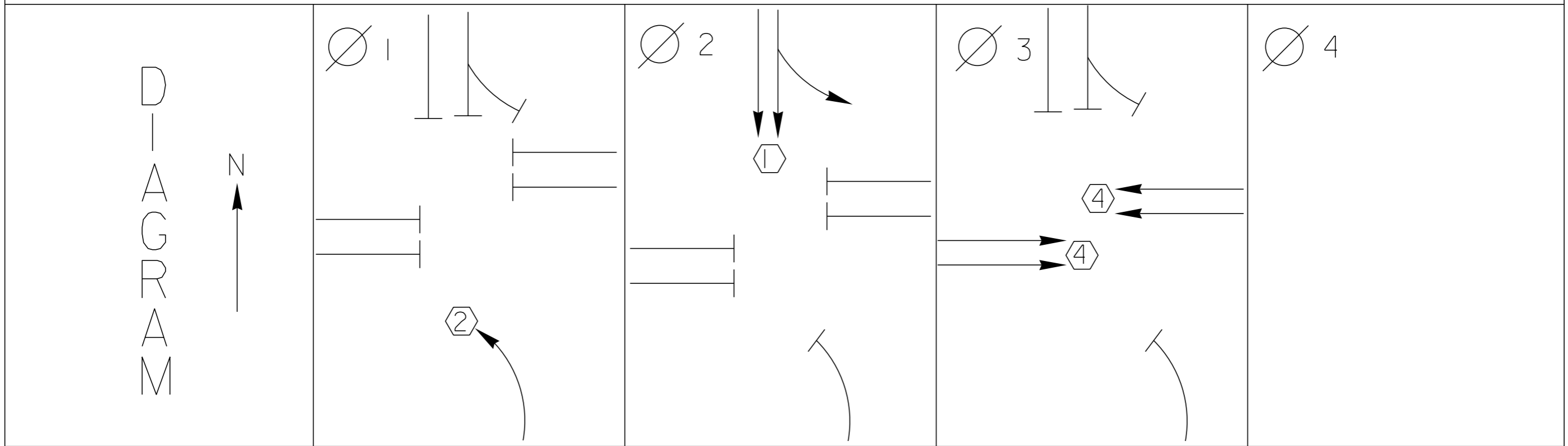
VT 4A WEST



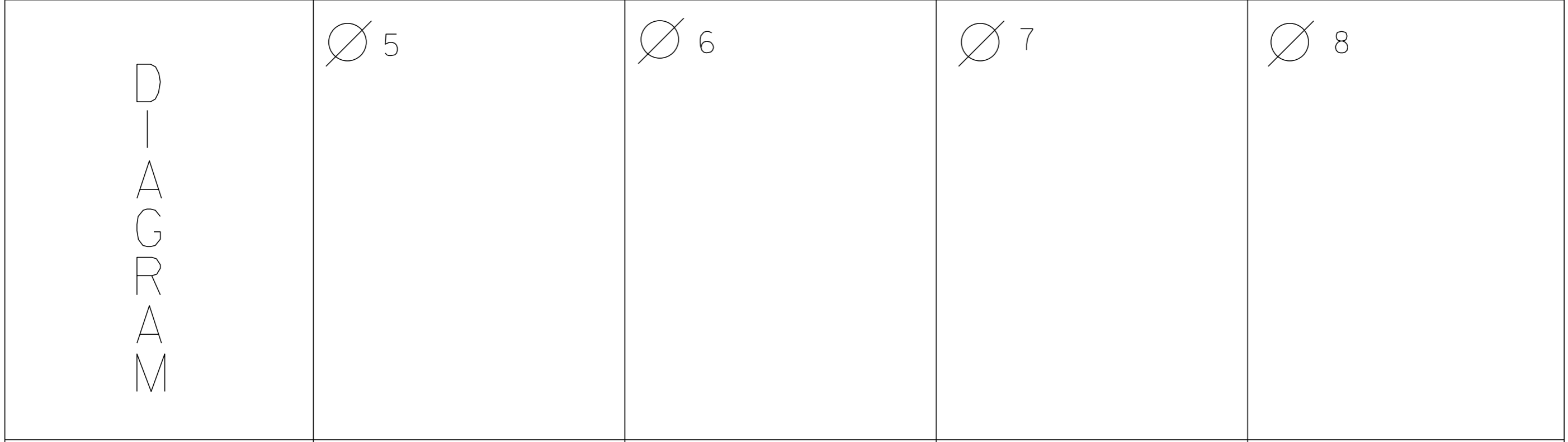
RUTLAND ST HWY

VT BUSINESS 4 EAST

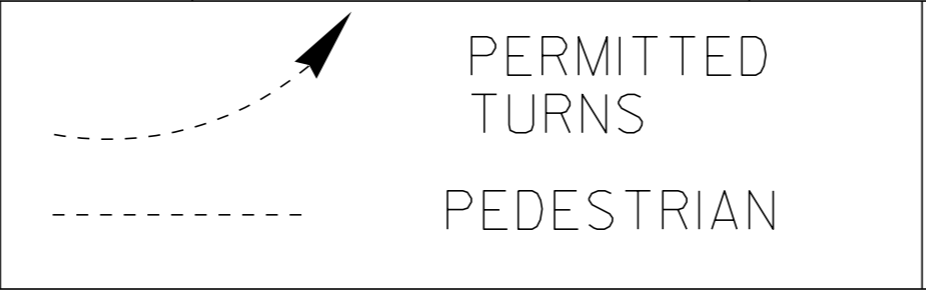
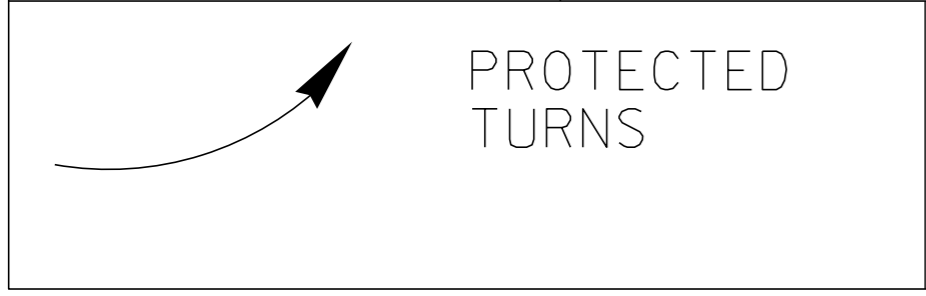
NOT TO SCALE



TIMING	G = Y =	G = Y =	G = Y =	G = Y =
--------	------------	------------	------------	------------



TIMING	G = Y =	G = Y =	G = Y =	G = Y =
--------	------------	------------	------------	------------



CYCLE LENGTH, C= \_\_\_\_\_ S





**WARNING**  
DO NOT OPERATE  
CABINET WITHOUT  
CONTACT MONITOR UNIT

**DANGER**  
115 VOLTS A.C.

Orange label with illegible text

115  
FAN ON TEMP  
DIS. I  
ECONOLITE  
44820

SERIES 2  
115 VAC  
1.5 AMP  
SLO-BLO  
14 ASS

RED 200  
TEL  
ASS

RED 200  
TEL

RING STATUS PHASE STATUS COORD STATUS

1	VEL	0.9	T	N	T	---	---	---	---	0%	FPCE
	MAX	OUT	VEH	R-C	-C-	---	---	---	---	NIC-001	
	RED	REST	FED	---	---	---	---	---	---	11:36:04	
			PRE	---	---	---	---	---	---		

F1 F2 F3 F4 F5 F6  
MAIN MENU SUB-MENU PAGE UP PAGE DOWN DISPLAY ADJUST STATUS DISPLAY

YES/ON NO/OFF  
1 2 3  
4 5 6  
7 8 9  
0 CLEAR  
SPEC FUNC  
RED CALL

ECONOLITE

A B C D  
+24 VDC 1 AMP SLO-BLO  
115 VAC 1.5 AMP SLO-BLO

TERMINAL TELEMETRY

ASC-8000 S N 6263

RESET AFTER MODIFYING SWITCHES

BI-FAULT MONITOR FAIL  
RESET POWER MODE INC PREV. FAIL

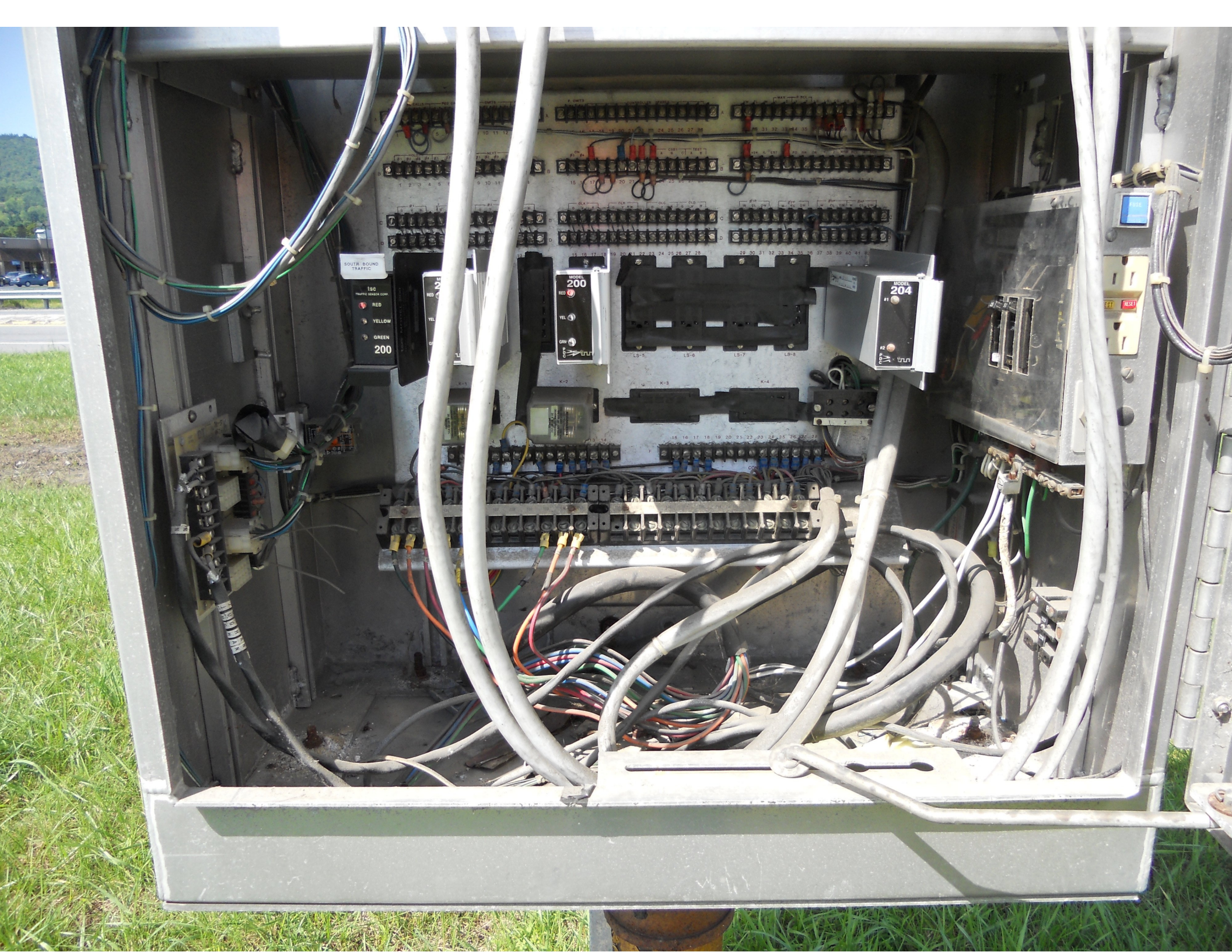
MIN. FLASH DUAL SEL. OPTIONS  
8 4 2 1 A B C D E F G H I J K L M N O P Q R S T U V W X Y Z

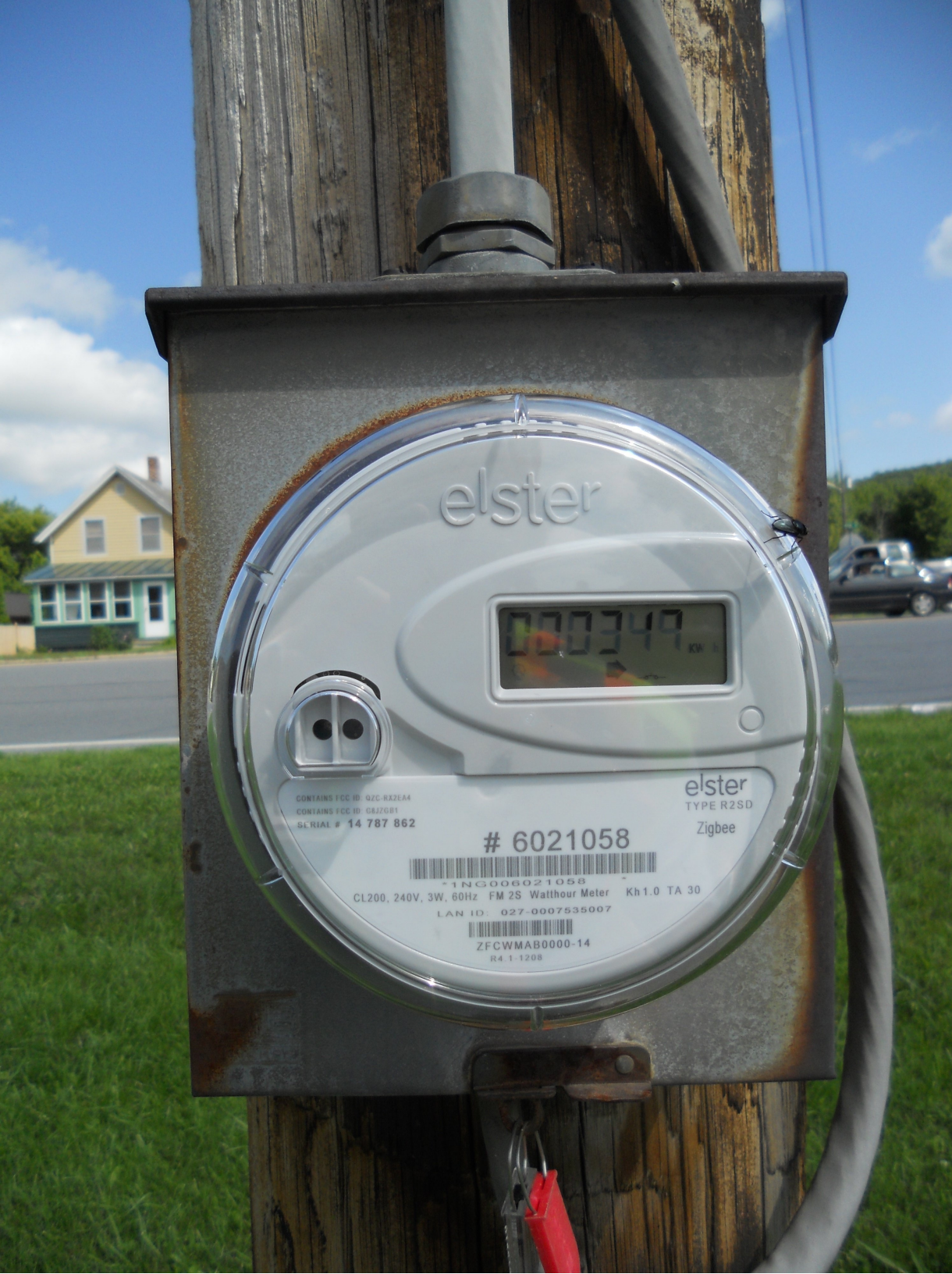
BY ENABLE NO ENABLE IN LATCH 2 3 4 5 8  
CM LOG DISABLE END DISABLE WALK DISABLE

SSM SSM  
ENABLE 7 8 9 10 11 12

1 AMP  
ECONOLITE  
CONTROL PRODUCTS, INC.  
HAWAII, CA 96708

RED 200  
TEL





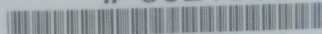
elster

000349 kWh

CONTAINS FCC ID: QZG-RX2E44  
CONTAINS FCC ID: G8J7G01  
SERIAL # 14 787 862

elster  
TYPE R2SD  
Zigbee

# 6021058



1NG006021058  
CL200, 240V, 3W, 60Hz FM 2S Watthour Meter Kh 1.0 TA 30

LAN ID: 027-0007535007



ZFCWMAB0000-14  
R4.1-1208

6  
101  
121





NO  
TURNS



7



7

100  
35  
35

←

NO  
LEFT  
TURN



NO  
TURNS



WEST TO  
VERMONT VERMONT  
4A 133















ONE WAY →



3 EAST ↓

4 WEST ↓



← ONE WAY











NO PARKING



ONLY





JCT BUSINESS TO SOUTH  
4 4 7  
↑ ↗ ↗

40

7

↶



STATE  
HIGHWAY  
BEGINS  
SPEED  
LIMIT  
40





STATE  
HIGHWAY  
BEGINS  
SPEED  
LIMIT  
40

NO  
TURNING  
RIGHT  
ON  
RED

NO  
LEFT  
TURN

ONE  
WAY

STOP

YIELD



NO  
TURNS



LEFT TO  
40 133  
← →













WEST  
W. Rutland  
↓

EAST  
Rutland  
↗

ONLY ONLY

ONLY ONLY















TO SOUTH WEST VERMONT 133 4A

STATE ROUTE 133 WEST VERMONT 4A

NO RIGHT TURN

ONE WAY



NIC Program Data

-----

Step No.	Pgm	Time	Cycle	Offset	Split	Flash	Dim	Max2	Max3	Sp	Functions		
										1	2	3	4

