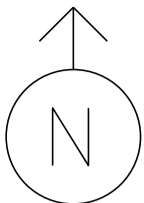


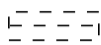
MS # 313



US-7 NORTH



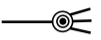
CONTROL BOX



LOOP DETECTION



PULL BOX



LUMINAIRE



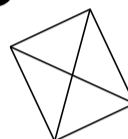
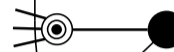
STANCHION



=



ONLY



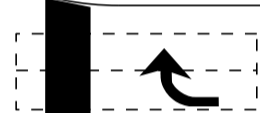
9

9

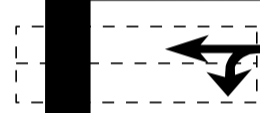
10 11



8



ONLY



4



4

4

4



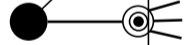
8

5 D

2

2

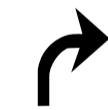
HOLIDAY INN



DIAMOND RUN MALL  
PONDEROSA



ONLY



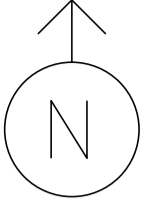
ONLY



US-7 SOUTH

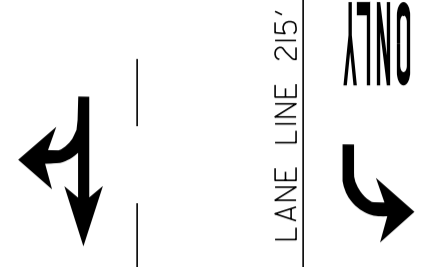
NOT TO SCALE

MS # 313



US-7 NORTH

12' | 12' | 12' | 12' | 12'



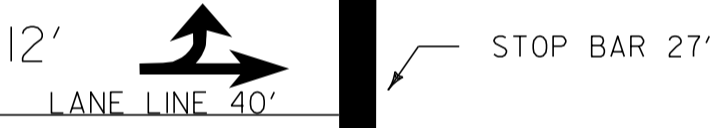
STOP BAR 36'

STOP BAR 27'



LANE LINE 90'

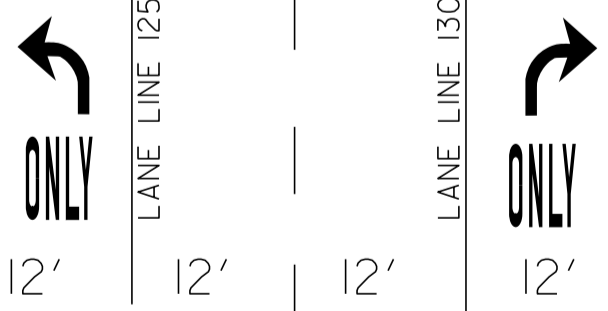
17'



17'

HOLIDAY INN

STOP BAR 47'

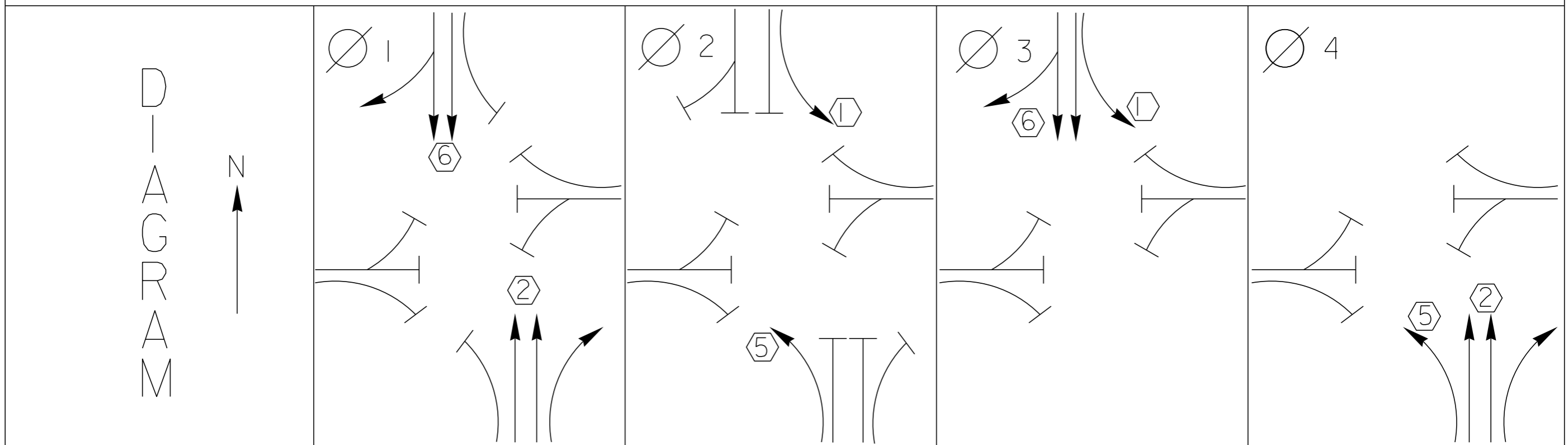


12' | 12' | 12' | 12' | 12'

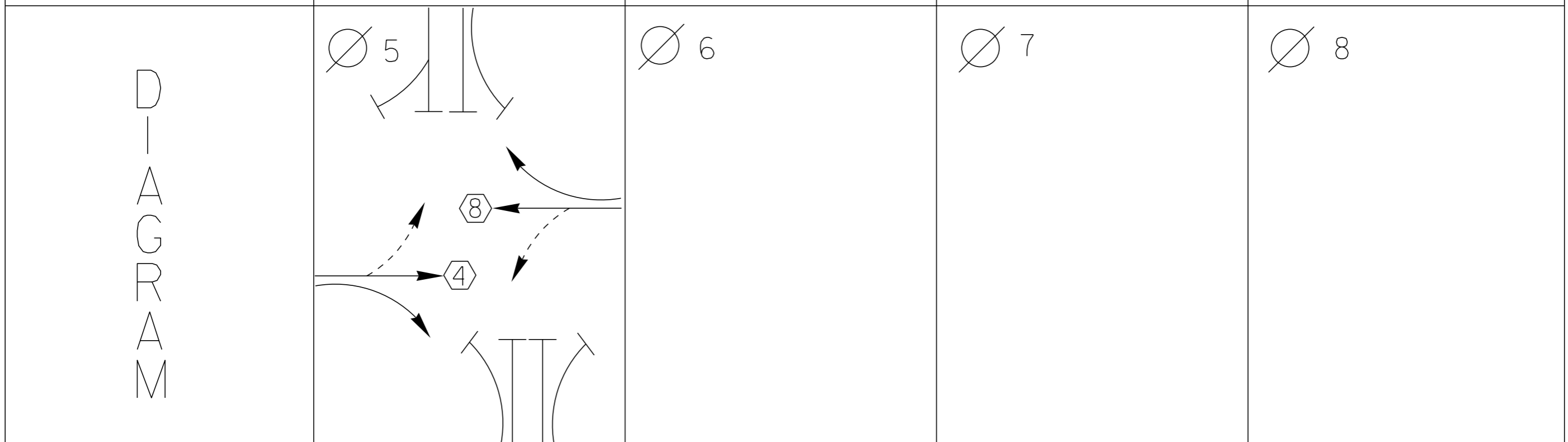
DIAMOND RUN MALL  
PONDEROSA

US-7 SOUTH

NOT TO SCALE



T I M I N G	G = Y =	G = Y =	G = Y =	G = Y =
----------------------------	------------	------------	------------	------------



T I M I N G	G = Y =	G = Y =	G = Y =	G = Y =
----------------------------	------------	------------	------------	------------

	PROTECTED TURNS		PERMITTED TURNS PEDESTRIAN	CYCLE LENGTH, C = _____ S
--	--------------------	--	----------------------------------	---------------------------



PROPERTY OF:  
VT. AGENCY OF TRANS.  
MAINTENANCE DIV.

IN EMERGENCY CALL:  
DIST. TRANS. OFFICE

773 5826

NIGHTS & WEEKENDS: 773 9101

INTERSECTION MS 313



CABINET  
CONFLICT M

TURNED ON 19 JUNE 95

SIGNAL HOOK-UP: US-7 @ Rutland Regional Shopping Center  
Site 2, Rutland, VT

2053-48-019

SIG#	1	2	3	4	5	6	7	8				
PHASE	1	2	3	4	5	6	7	8				
OVRLP									A	B	C	D
GRN		2G		4G		6G		8G				
YEL		2Y*		4Y		6Y*		8Y				
RED		2R		4R*		6R		8R*				
GRN ARR	1G				5G							
YEL ARR	1Y*				5Y*							
RED ARR	1R				5R							
WALK												
DON'T WALK												

NOTE: \* = FLASH COLOR FOR THAT SIGNAL

LOOP DETECTOR CONNECTIONS:

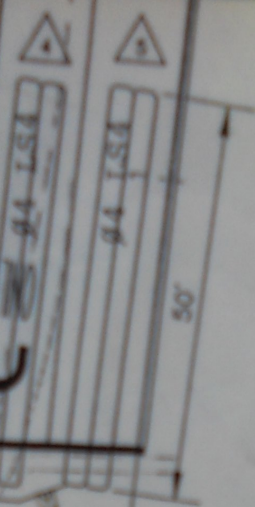
LOOP #	PHASE	CONNECT TO:
1 SBLT	1	L1A & L1B
2 EBLT	8	L2A & L2B
3 EBTH	8	L3A & L3B
4 WBRT	4	L4A & L4B
5 WBTH/RT	4	L5A & L5B
6 NBLT	5	L6A & L6B

PROPOSED CONTROLLER  
(GROUND MOUNTED)

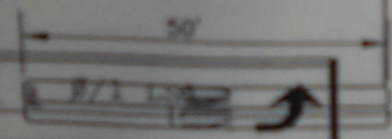
POWER SOURCE

SOCKET AND  
ON A STANCHION

Const.  
Bar

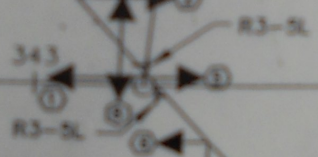


CONST. B



#6 LSA

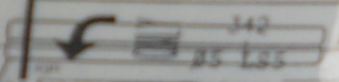
#6 LSA



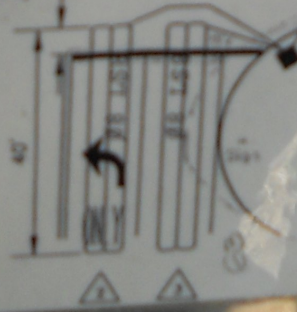
ONLY

#2 LSA

#2 LSA

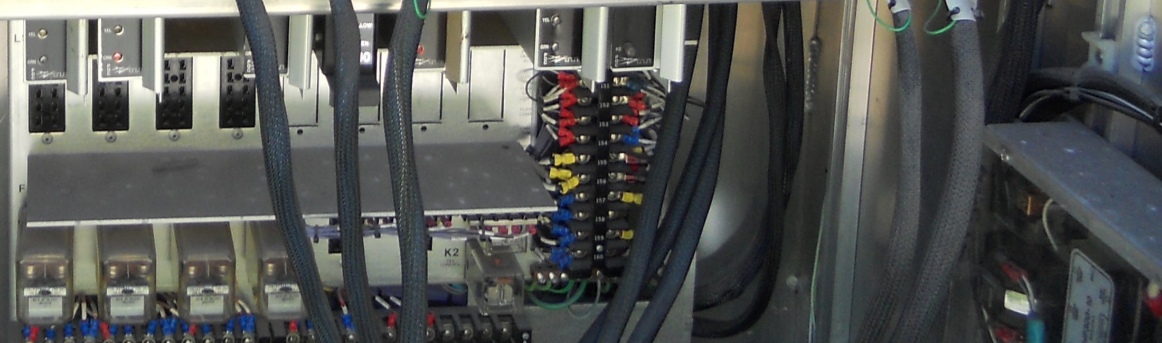
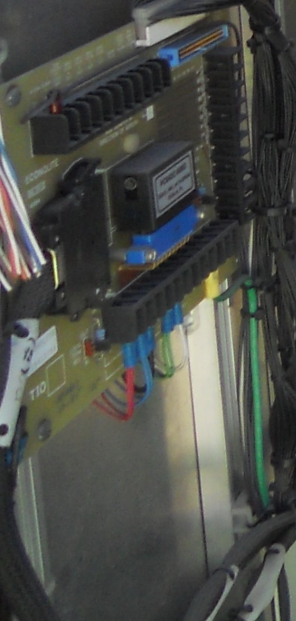
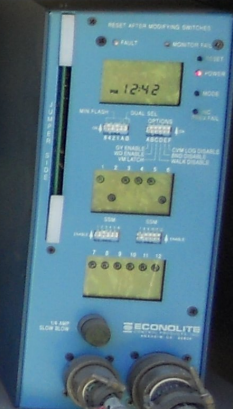
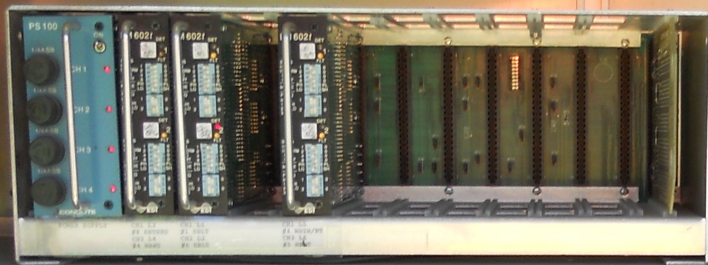
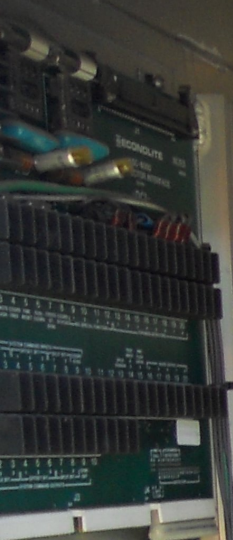


5'(TYP.)

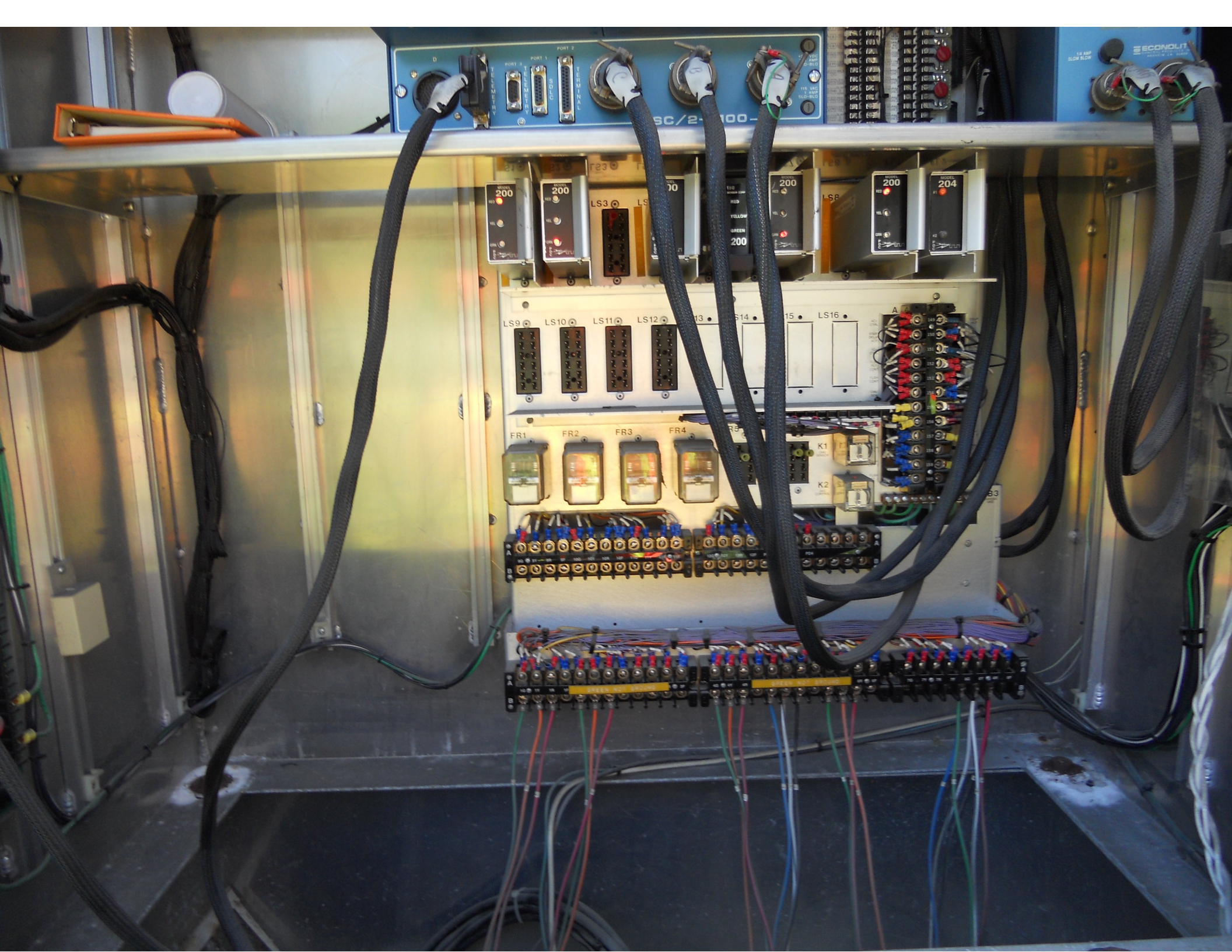


PROPOSED STEEL STRAIN

MEASURED	(M.A.) LEAKAGE TO GROUND











SOUTH  WEST  
TO   Fair Haven



  
ONLY

  
ONLY   


  
Holiday Inn

WOLFEVILLE  
RESTAURANT





ONLY

SPEED  
LIMIT  
45

DIAMOND-TEEN















# WARNING

BASE PLATES AND ANCHOR BOLTS

UNDERDESIGNED

POLE M<sub>MAX</sub> = 200,000 FT-LBS



DIAMOND RUN

- SEARS
- J.C. PENNEY
- OLD NAVY



West 101 Westland

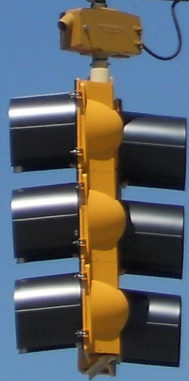
DIAMOND-RUN  
DC  
SEARS  
JOYCE KAY  
MURKIN & HEN  
OLD NAVY

HIGHTLAND  
WEST  
101 WESTLAND

inn







4 EAST 7 NORTH  
Rutland

*DIAMOND RUN MALL PLACE*



ONLY





Aspen Dental









SPÉED  
LIMIT  
40



**WARNING**  
BASE PLATES AND ANCHOR BOLTS  
UNDESIGNED  
POLE MAX = 200,000 FT-LBS







Coordination Patterns

```

-----
Pattern 1
Cycle Length . . . 90  COS . . . . . FREE
Offset . . . . . 28
Vehicle Permissive . . [1] 0 [2] 0
Vehicle Perm 2 Displacement 0 Phase Reservice. . NO
Splits: Phase 1- 14 2- 60 3- 0 4- 16
          Phase 5- 14 6- 60 7- 0 8- 16
          Phase 9- 0 10- 0 11- 0 12- 0 Split Sum: 0
Split Extension/Ring [1] 0 [2] 0
Split Demand Pattern [1] 0 [2] 0
XRT Pattern. . . 0
Phase Number: 1 2 3 4 5 6 7 8 9 10 11 12
Coord Phases . . . . .
Veh Recall . . . . .
Veh Max Recall . . . . .
Ped Recall . . . . .
Veh Omit . . . . .
Alt Sequence . . A: . B: . C: . D: . E: . F: .
-----
    
```

```

-----
Pattern 2
Cycle Length . . . 110  COS . . . . . 111
Offset . . . . . 20
Vehicle Permissive . . [1] 10 [2] 0
Vehicle Perm 2 Displacement 0 Phase Reservice. . NO
Splits: Phase 1- 34 2- 45 3- 0 4- 31
          Phase 5- 15 6- 64 7- 0 8- 31
          Phase 9- 0 10- 0 11- 0 12- 0 Split Sum: 0
Split Extension/Ring [1] 0 [2] 0
Split Demand Pattern [1] 0 [2] 0
XRT Pattern. . . 0
Phase Number: 1 2 3 4 5 6 7 8 9 10 11 12
Coord Phases . . . X . . . X . . . . .
Veh Recall . . . . .
Veh Max Recall . . . . .
Ped Recall . . . . .
Veh Omit . . . . .
Alt Sequence . . A: . B: . C: . D: . E: . F: .
-----
    
```

```

-----
Pattern 3
Cycle Length . . . 90  COS . . . . . 222
Offset . . . . . 52
Vehicle Permissive . . [1] 10 [2] 0
Vehicle Perm 2 Displacement 0 Phase Reservice. . NO
Splits: Phase 1- 18 2- 52 3- 0 4- 20
          Phase 5- 18 6- 52 7- 0 8- 20
          Phase 9- 0 10- 0 11- 0 12- 0 Split Sum: 0
Split Extension/Ring [1] 0 [2] 0
Split Demand Pattern [1] 0 [2] 0
XRT Pattern. . . 0
Phase Number: 1 2 3 4 5 6 7 8 9 10 11 12
Coord Phases . . . X . . . X . . . . .
Veh Recall . . . . .
Veh Max Recall . . . . .
Ped Recall . . . . .
Veh Omit . . . . .
Alt Sequence . . A: . B: . C: . D: . E: . F: .
-----
    
```

Coordination Patterns

```

-----
Pattern 4
Cycle Length . . 120   COS . . . . . 333
Offset . . . . . 118
Vehicle Permissive . . [1] 10   [2] 0
Vehicle Perm 2 Displacement 0   Phase Reservice. . NO
Splits:   Phase 1- 37 2- 54 3- 0 4- 29
          Phase 5- 15 6- 76 7- 0 8- 29
          Phase 9- 0 10- 0 11- 0 12- 0   Split Sum: 0
Split Extension/Ring [1] 0   [2] 0
Split Demand Pattern [1] 0   [2] 0
XRT Pattern. . . 0
  Phase Number: 1 2 3 4 5 6 7 8 9 10 11 12
Coord Phases . . . X . . . X . . . . .
Veh Recall . . . . .
Veh Max Recall . . . . .
Ped Recall . . . . .
Veh Omit . . . . .
Alt Sequence . . A: . B: . C: . D: . E: . F: .
-----

```



NIC Program Steps

-----

Step	Program	Step Begins	Pattern	Override
1	1	0000	0	NO
2	1	0600	3	NO
3	1	0900	2	NO
4	1	1530	4	NO
5	1	1800	2	NO

TOD Program Steps

-----

Step 1            Program 1            Step Begins    0000

Flash. . . . . X            Dimming Enable. . . . .  
 Red Rest . . . . .            Alt Veh Extension . . . . .  
 Spare 5. . . . .            Det Log Enable. . . . .  
 Spare 3. . . . .            Spare 4 . . . . .  
 Type 0 Dly Enable. . . . . Spare 2 . . . . .  
 Det Diag Plan. . . . . 0

Phase Number

	1	2	3	4	5	6	7	8	9	10	11	12
Max 2 Enable . . . . .	.	.	.	.	.	.	.	.	.	.	.	.
Max 3 Enable . . . . .	.	.	.	.	.	.	.	.	.	.	.	.
Veh Recall . . . . .	.	.	.	.	.	.	.	.	.	.	.	.
Veh Max Recall . . . . .	.	.	.	.	.	.	.	.	.	.	.	.
Ped Recall . . . . .	.	.	.	.	.	.	.	.	.	.	.	.
Cond Service Inhibit. . . . .	.	.	.	.	.	.	.	.	.	.	.	.
Phase Omit . . . . .	.	.	.	.	.	.	.	.	.	.	.	.
Special Function . . . . .	.	.	.	.	.	.	.	.	.	.	.	.

Alt Sequence . . . . .            A    B    C    D    E    F

-----

Step 2            Program 1            Step Begins    0600

Flash. . . . .            Dimming Enable. . . . .  
 Red Rest . . . . .            Alt Veh Extension . . . . .  
 Spare 5. . . . .            Det Log Enable. . . . .  
 Spare 3. . . . .            Spare 4 . . . . .  
 Type 0 Dly Enable. . . . . Spare 2 . . . . .  
 Det Diag Plan. . . . . 0

Phase Number

	1	2	3	4	5	6	7	8	9	10	11	12
Max 2 Enable . . . . .	X	X	.	X	X	X	.	X	.	.	.	.
Max 3 Enable . . . . .	.	.	.	.	.	.	.	.	.	.	.	.
Veh Recall . . . . .	.	.	.	.	.	.	.	.	.	.	.	.
Veh Max Recall . . . . .	.	.	.	.	.	.	.	.	.	.	.	.
Ped Recall . . . . .	.	.	.	.	.	.	.	.	.	.	.	.
Cond Service Inhibit. . . . .	.	.	.	.	.	.	.	.	.	.	.	.
Phase Omit . . . . .	.	.	.	.	.	.	.	.	.	.	.	.
Special Function . . . . .	.	.	.	.	.	.	.	.	.	.	.	.

Alt Sequence . . . . .            A    B    C    D    E    F

-----

TOD Program Steps

-----  
 Step 3            Program 1            Step Begins    0900

Flash. . . . . Dimming Enable. . . . .  
 Red Rest . . . . . Alt Veh Extension . . . . .  
 Spare 5. . . . . Det Log Enable. . . . .  
 Spare 3. . . . . Spare 4 . . . . .  
 Type 0 Dly Enable. . . Spare 2 . . . . .  
 Det Diag Plan. . . . 0

Phase Number

	1	2	3	4	5	6	7	8	9	10	11	12
Max 2 Enable . . . . .	.	.	.	.	.	.	.	.	.	.	.	.
Max 3 Enable . . . . .	.	.	.	.	.	.	.	.	.	.	.	.
Veh Recall . . . . .	.	.	.	.	.	.	.	.	.	.	.	.
Veh Max Recall . . . . .	.	.	.	.	.	.	.	.	.	.	.	.
Ped Recall . . . . .	.	.	.	.	.	.	.	.	.	.	.	.
Cond Service Inhibit. . . . .	.	.	.	.	.	.	.	.	.	.	.	.
Phase Omit . . . . .	.	.	.	.	.	.	.	.	.	.	.	.
Special Function . . . . .	.	.	.	.	.	.	.	.	.	.	.	.

Alt Sequence . . . . . A B C D E F

-----  
 Step 4            Program 1            Step Begins    1530

Flash. . . . . Dimming Enable. . . . .  
 Red Rest . . . . . Alt Veh Extension . . . . .  
 Spare 5. . . . . Det Log Enable. . . . .  
 Spare 3. . . . . Spare 4 . . . . .  
 Type 0 Dly Enable. . . Spare 2 . . . . .  
 Det Diag Plan. . . . 0

Phase Number

	1	2	3	4	5	6	7	8	9	10	11	12
Max 2 Enable . . . . .	.	.	.	.	.	.	.	.	.	.	.	.
Max 3 Enable . . . . .	X	X	.	X	X	X	.	X	.	.	.	.
Veh Recall . . . . .	.	.	.	.	.	.	.	.	.	.	.	.
Veh Max Recall . . . . .	.	.	.	.	.	.	.	.	.	.	.	.
Ped Recall . . . . .	.	.	.	.	.	.	.	.	.	.	.	.
Cond Service Inhibit. . . . .	.	.	.	.	.	.	.	.	.	.	.	.
Phase Omit . . . . .	.	.	.	.	.	.	.	.	.	.	.	.
Special Function . . . . .	.	.	.	.	.	.	.	.	.	.	.	.

Alt Sequence . . . . . A B C D E F

-----

TOD Program Steps

-----

Step 5            Program 1            Step Begins    1800

Flash. . . . .	.	Dimming Enable. . . . .
Red Rest . . . . .	.	Alt Veh Extension . . . . .
Spare 5. . . . .	.	Det Log Enable. . . . .
Spare 3. . . . .	.	Spare 4 . . . . .
Type 0 Dly Enable. . . . .	.	Spare 2 . . . . .
Det Diag Plan. . . . .	0	

		Phase Number											
		1	2	3	4	5	6	7	8	9	10	11	12
Max 2 Enable . . . . .	.	.	.	.	.	.	.	.	.	.	.	.	.
Max 3 Enable . . . . .	.	.	.	.	.	.	.	.	.	.	.	.	.
Veh Recall . . . . .	.	.	.	.	.	.	.	.	.	.	.	.	.
Veh Max Recall . . . . .	.	.	.	.	.	.	.	.	.	.	.	.	.
Ped Recall . . . . .	.	.	.	.	.	.	.	.	.	.	.	.	.
Cond Service Inhibit. . . . .	.	.	.	.	.	.	.	.	.	.	.	.	.
Phase Omit . . . . .	.	.	.	.	.	.	.	.	.	.	.	.	.
Special Function . . . . .	.	.	.	.	.	.	.	.	.	.	.	.	.

		A	B	C	D	E	F
Alt Sequence . . . . .	.	.	.	.	.	.	.

-----