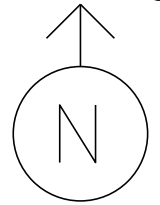
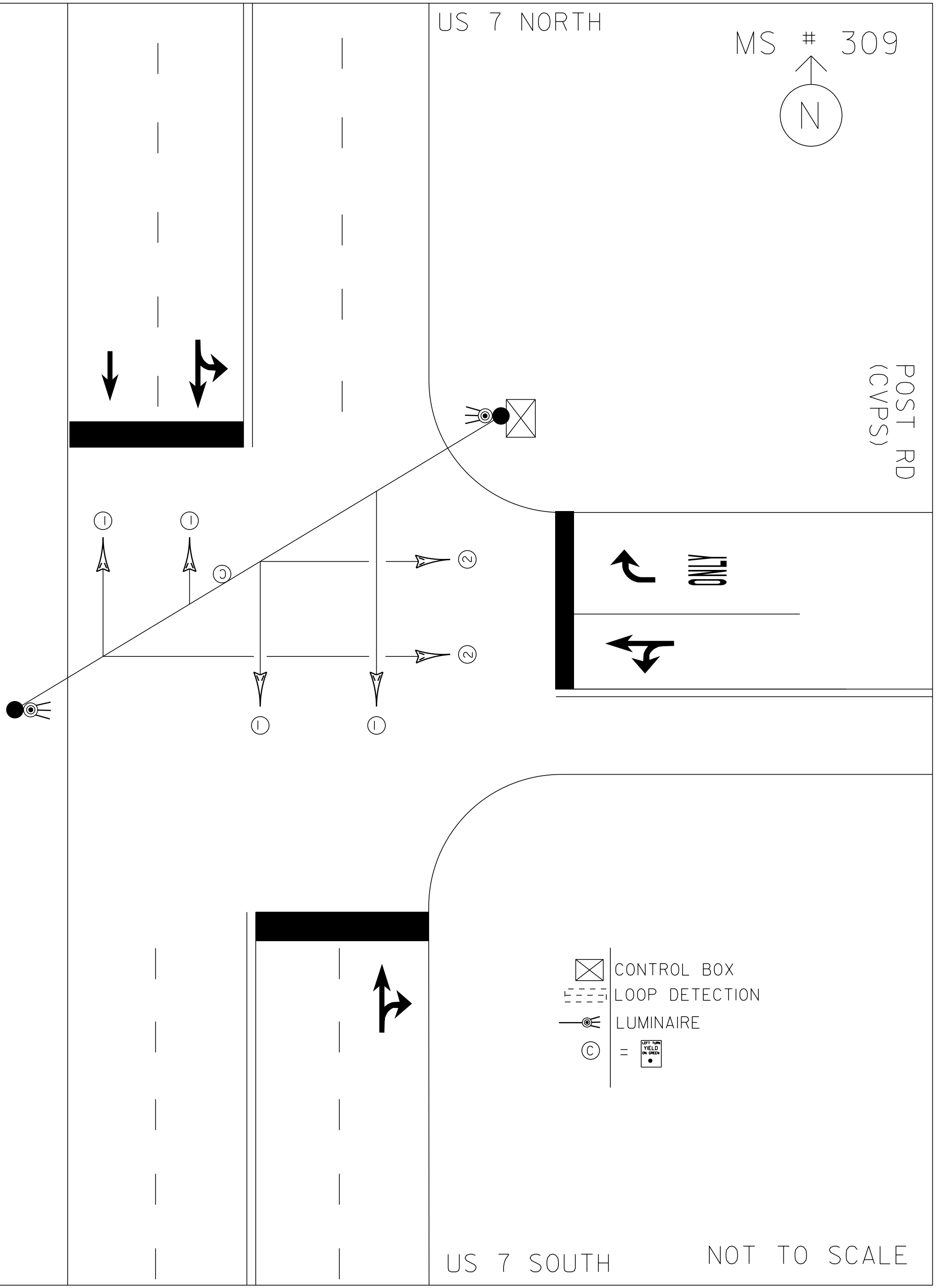



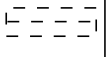
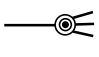


US 7 NORTH

MS # 309



POST RD
(CVPS)



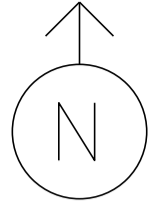
-  CONTROL BOX
-  LOOP DETECTION
-  LUMINAIRE
-  = 

US 7 SOUTH

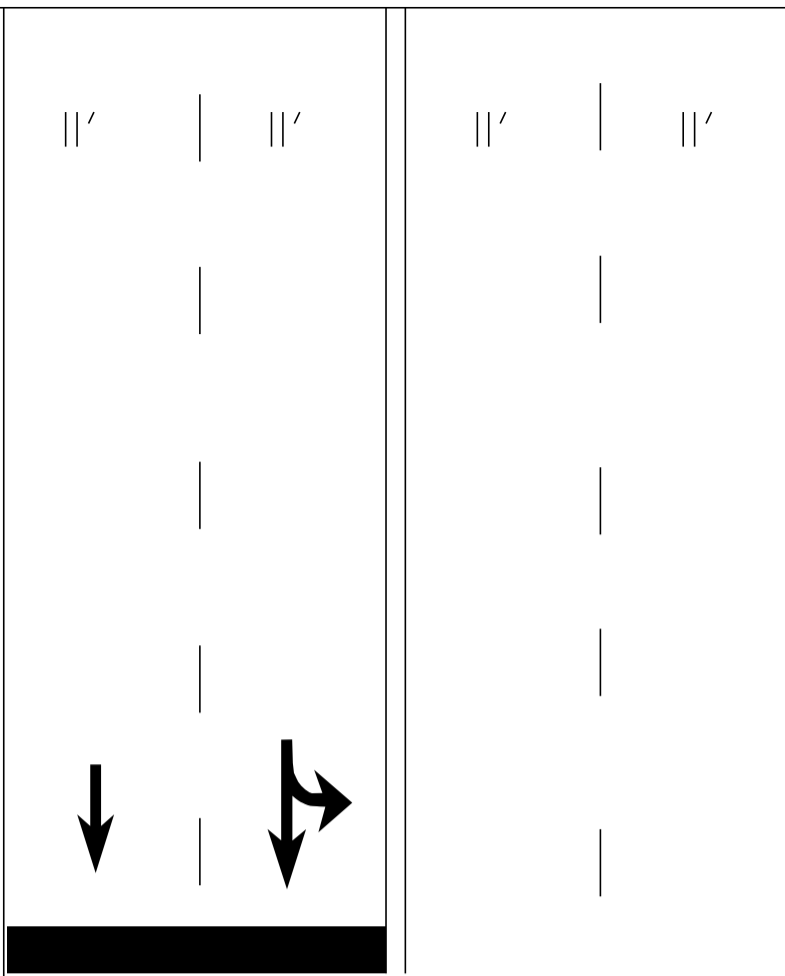
NOT TO SCALE

US 7 NORTH

MS # 309

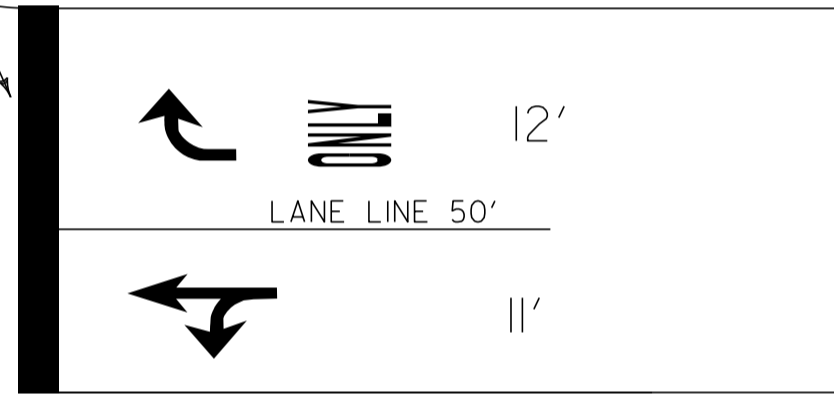


POST RD
(CVPS)



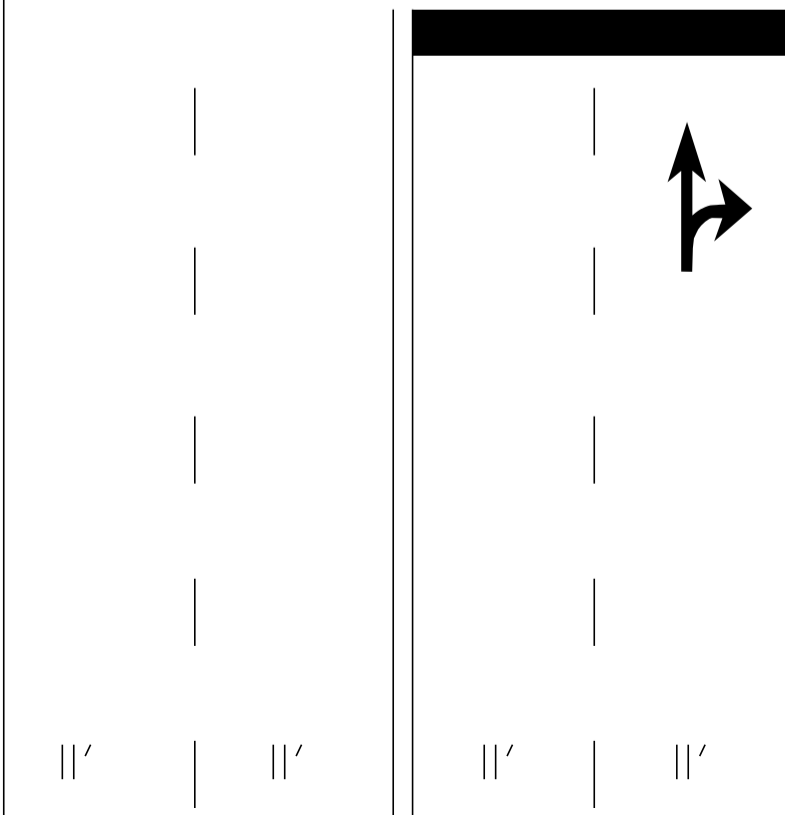
STOP BAR 22'

STOP BAR 30'



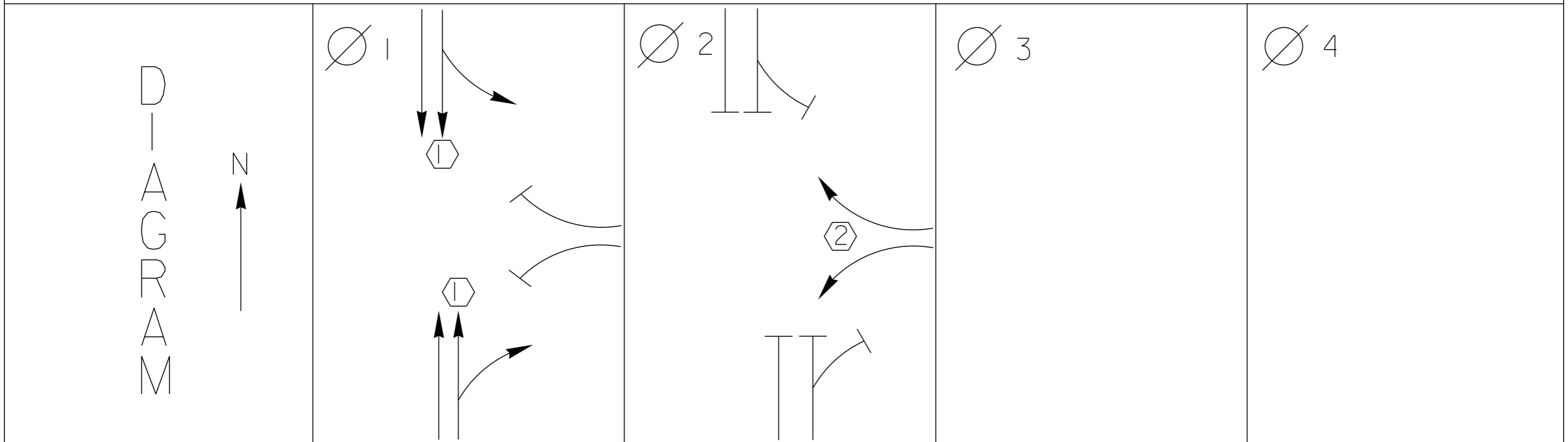
13'

STOP BAR 24'

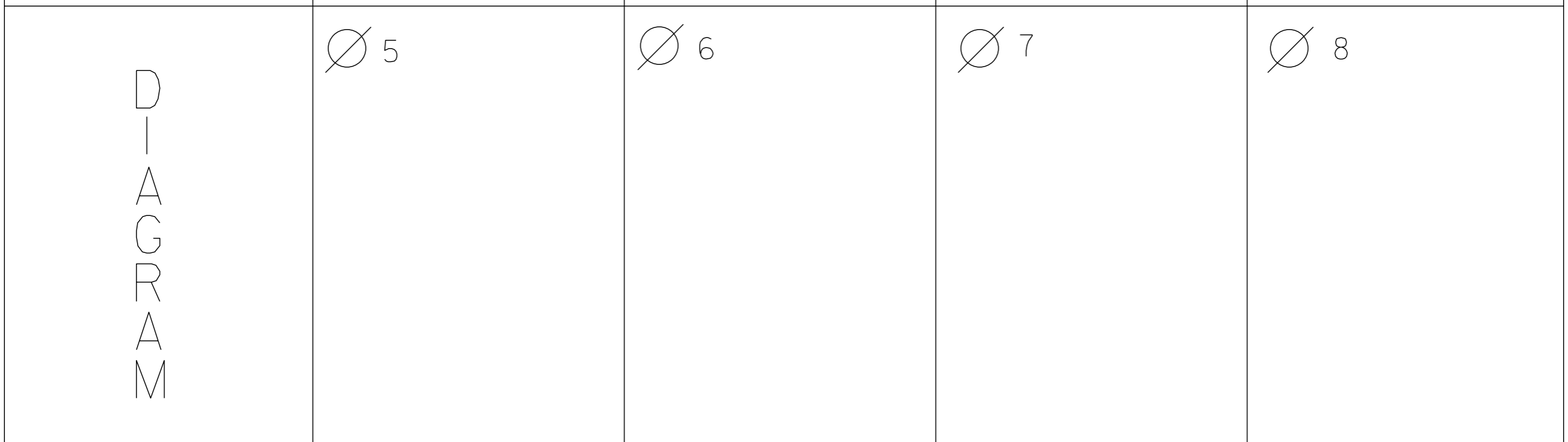


US 7 SOUTH

NOT TO SCALE



T I M I N G	G = Y =	G = Y =	G = Y =	G = Y =
----------------------------	------------	------------	------------	------------



T I M I N G	G = Y =	G = Y =	G = Y =	G = Y =
----------------------------	------------	------------	------------	------------

 PROTECTED TURNS	 PERMITTED TURNS PEDESTRIAN	CYCLE LENGTH, C = _____ S
---	---	---------------------------



CAUTION

WEST
WINDY HOLLOW
2215



DANGER

115 VOLTS A.C.

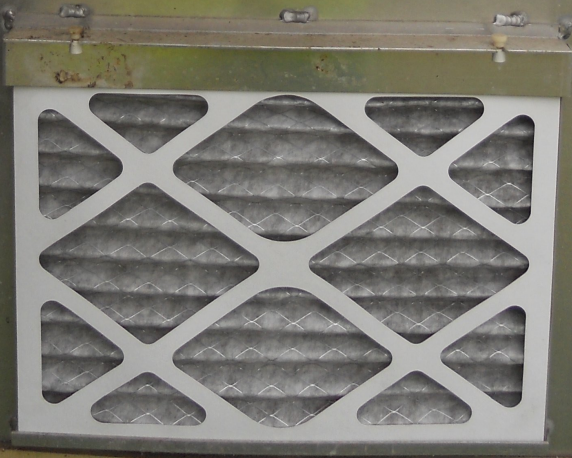
WARNING

DO NOT OPERATE
CABINET WITHOUT
CONFLICT MONITOR UNIT

Control Panel Labels:

- AUTO FLASH
- AUTO FLASH
- CONT ON
- CONT OFF
- VENT TEST SW'S: #1A, #2B, #3C, #4D
- OUTLET TEST
- CABINET LIGHT
- CABINET LIGHT
- PRE TEST SW'S: #1A, #2B, #3C, #4D

652-12-2





RESET AFTER MODIFYING SWITCHES

FAULT MONITOR FAIL
 RESET
 POWER
 MODE
 INC. PREV. FAIL
 INC. FAIL

80 DATE

MIN FLASH DUAL SEL OFF/ON

8421 AB ABCDEF

Y ENABLE CVM LOS DISABLE
 WZ INABLE WZ DISABLE
 VM LATCH WALK DISABLE

1 2 3 4 5 6

SSM SSM

7 8 9 10 11 12

14 AMP SLOW BLOW

ECONOLITE
CONTROL SYSTEMS, INC.
ASHLAND, GA 30508

RING STATUS PHASE STATUS COORD STATUS

INTERVAL TIMING 1 2 3 4 5 6 7 8 STATUS

1 PERM FAIL
 2 14 VCH L
 3 RED REST
 4 PED PRE

YES/NO NO/OFF
 1 2 3
 4 5 6
 7 8 9
 PER CALL CLEAR
 SEC FUNC 0

F1 MAIN MENU F2 SUB MENU F3 PAGE UP F4 PAGE DOWN
 F5 DISP. ADJUST F6 STATUS DISPLAY

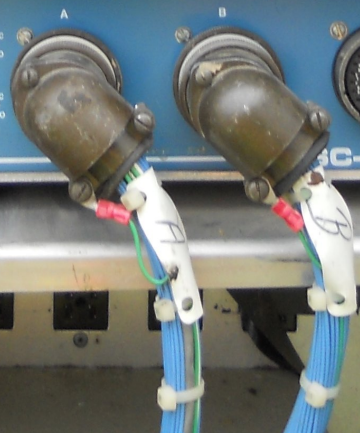
ECONOLITE

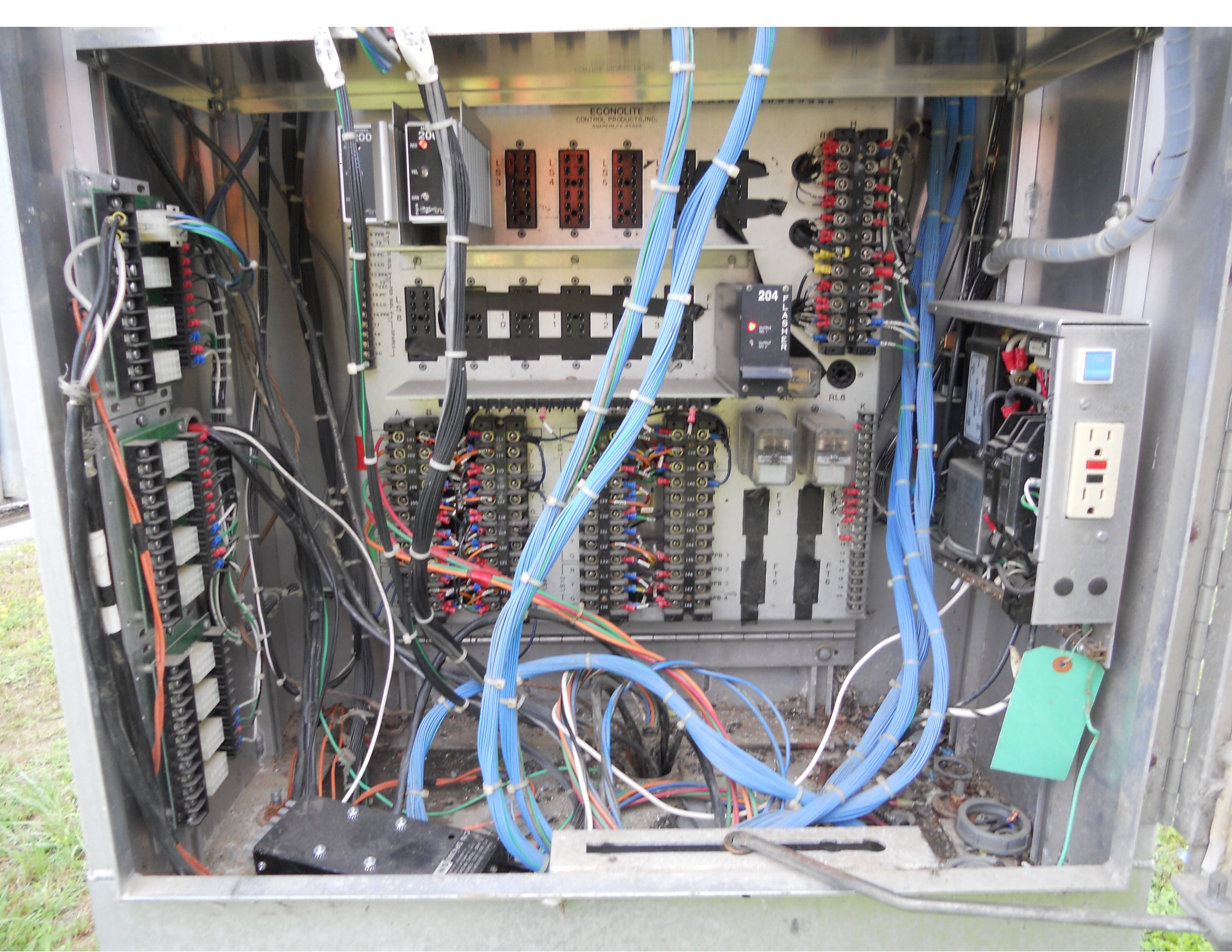
+24 VDC 1 AMP SLO-BLO
 115 VAC 3 AMP SLO-BLO

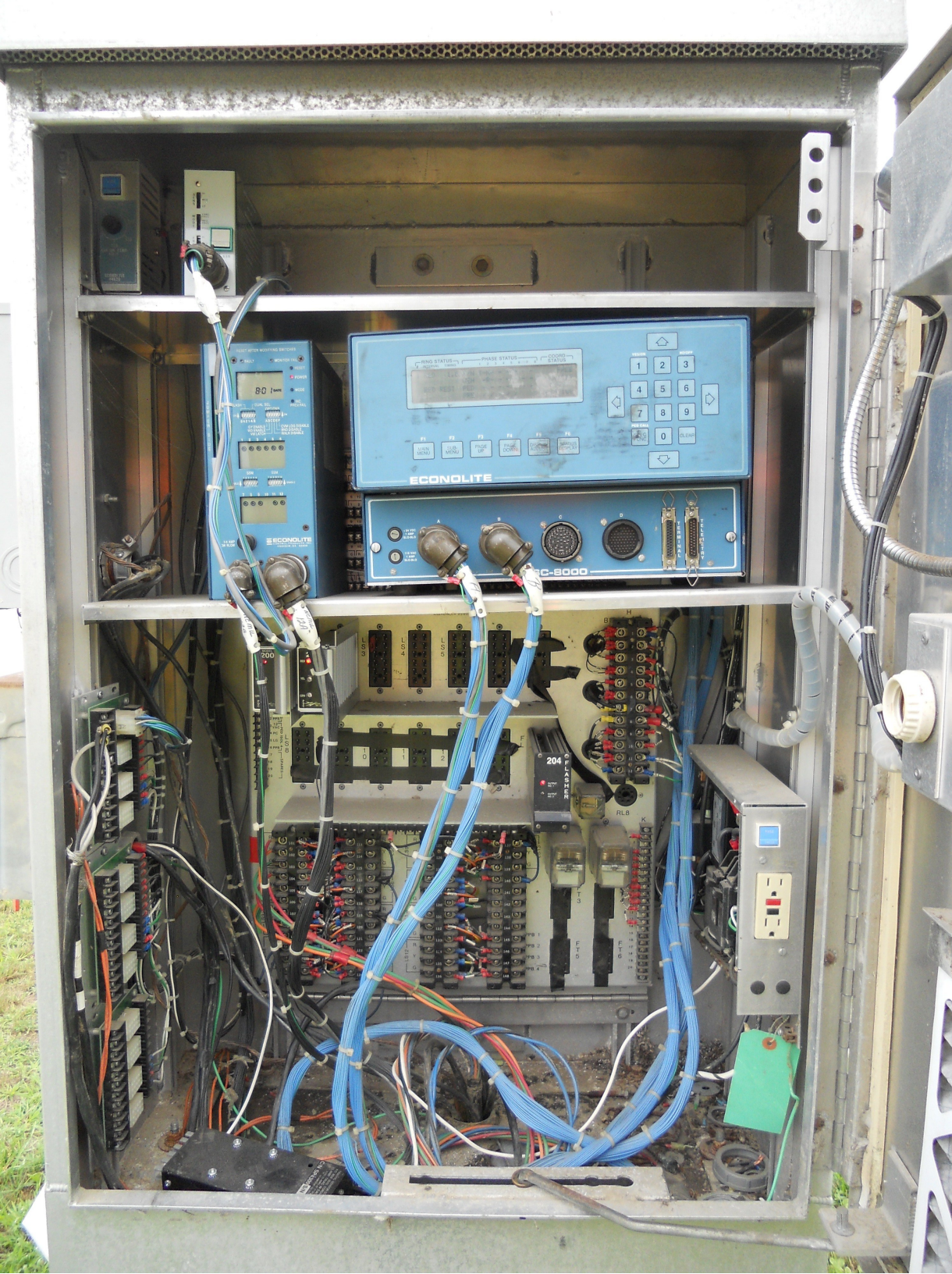
A B C D

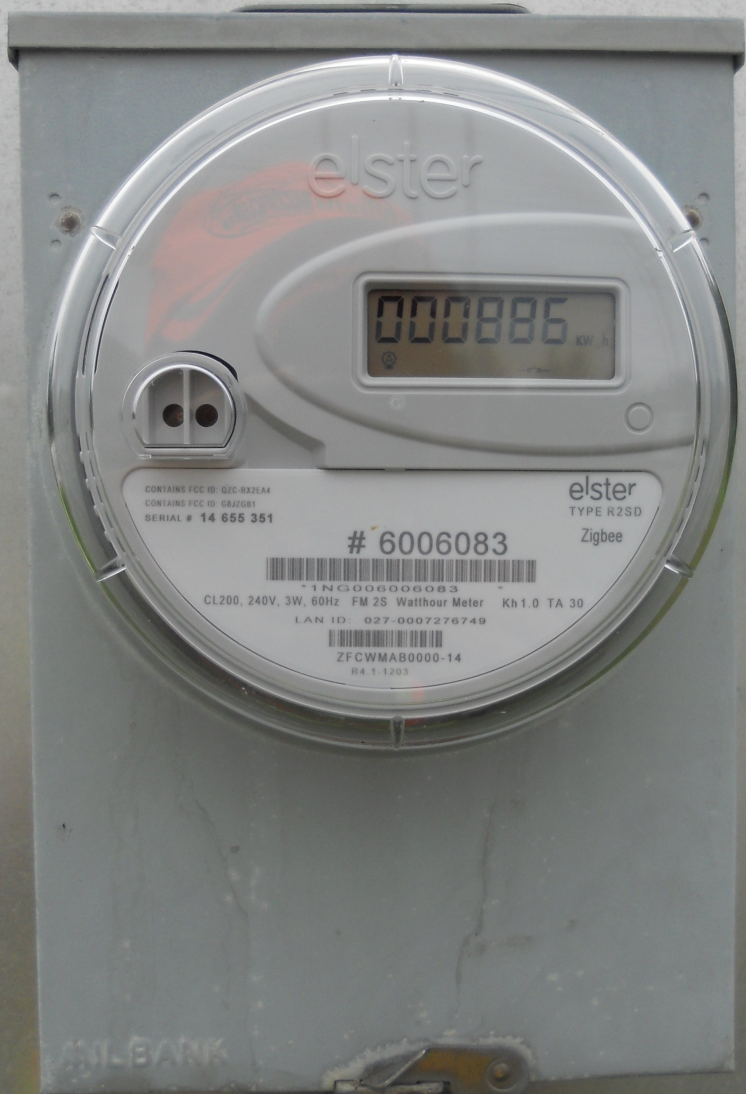
TERMINAL TELEMETRY

EC-8000









elster

000886 kWh

CONTAINS FCC ID: G2C-R2SDA4
CONTAINS FCC ID: GRZ081
SERIAL # 14 655 351

elster
TYPE R2SD
Zigbee

6006083



CL200, 240V, 3W, 60Hz FM 2S Watthour Meter Kh1.0 TA 30

LAN ID: 027-0007276749



ZFCWMAB0000-14
R4.1-1203

AT&T BANK







LEFT TURN
YIELD
ON GREEN





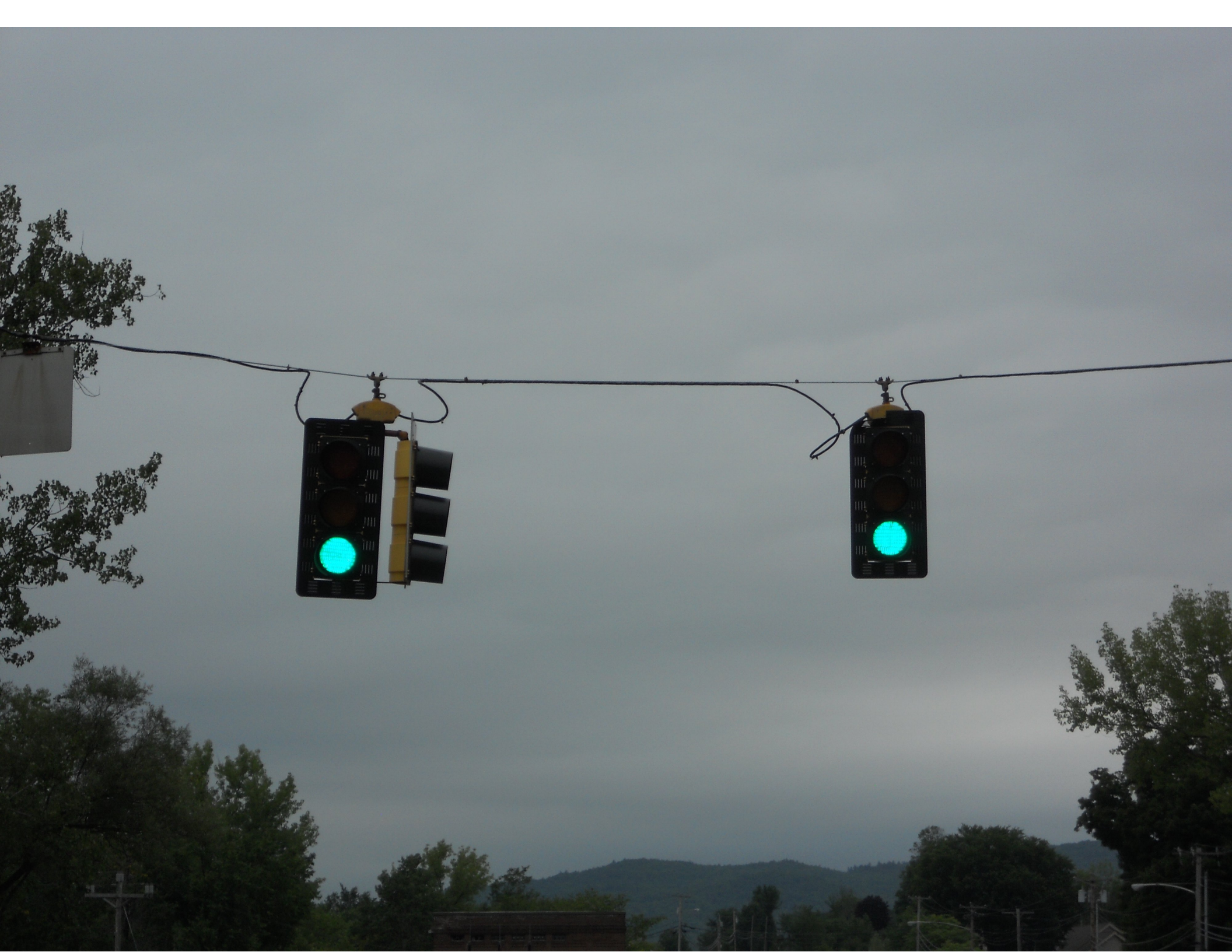




RIGHT
LANE
ENDS

900 FT





POST RD

RUTLAND TOWN

ELEMENTARY SCHOOL

NORTHWOOD PARK
AND POOL

2205 TO 41 →











