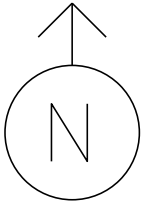
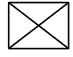
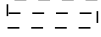
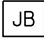
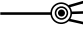


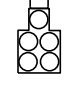




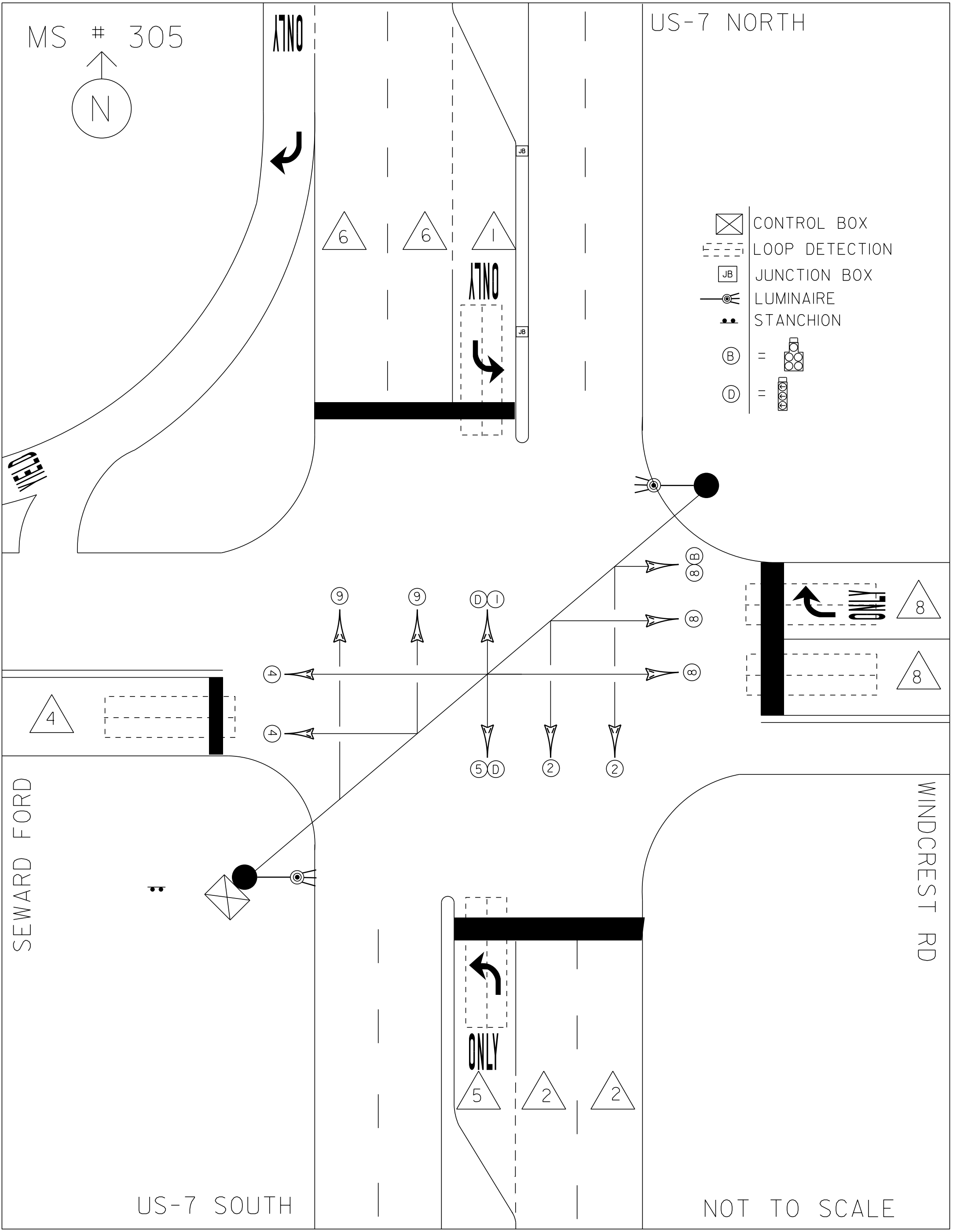
MS # 305



ONLY

US-7 NORTH

-  CONTROL BOX
-  LOOP DETECTION
-  JUNCTION BOX
-  LUMINAIRE
-  STANCHION
-  B = 
-  D = 



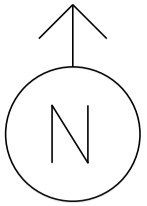
SEWARD FORD

WINDCREST RD

US-7 SOUTH

NOT TO SCALE

MS # 305



US-7 NORTH

ONLY



12'

12'

12'

12'

12'

12'

LANE LINE 255'

ONLY



STOP BAR 36'

12'

ONLY

13'

STOP BAR 30'



ONLY

12'

LANE LINE 200'

12'

11'

STOP BAR 21'

17'

SEWARD FORD

WINDCREST RD

STOP BAR 36'



ONLY

LANE LINE 140'

12'

12'


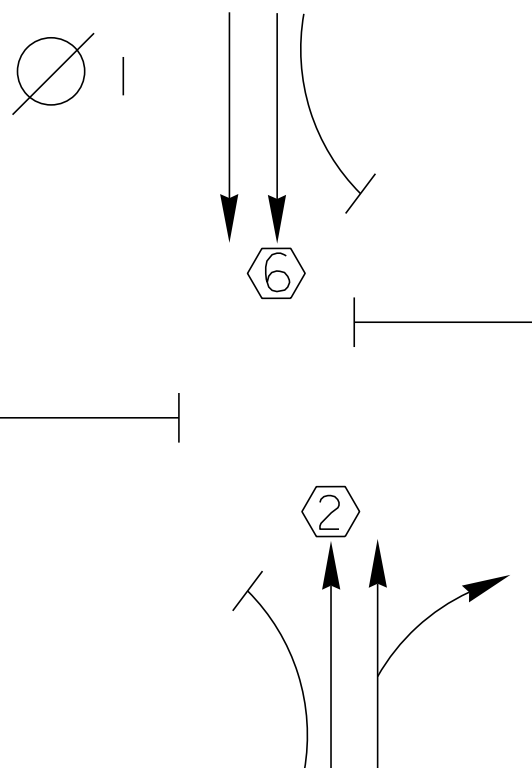
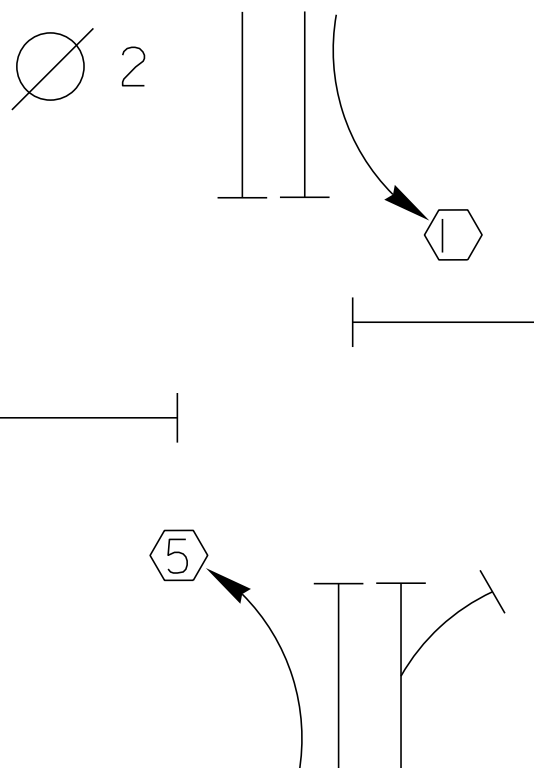
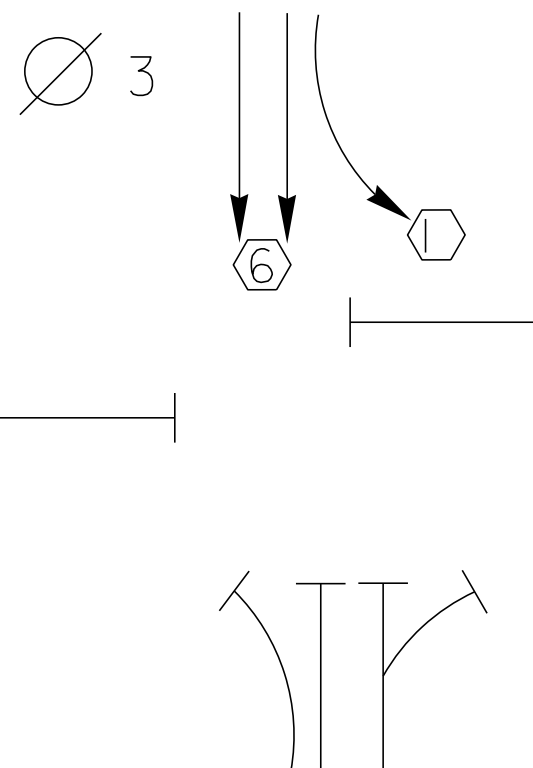
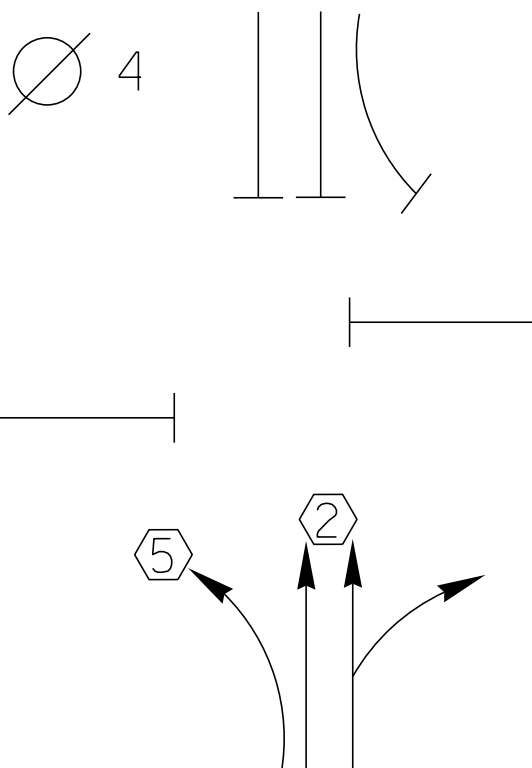
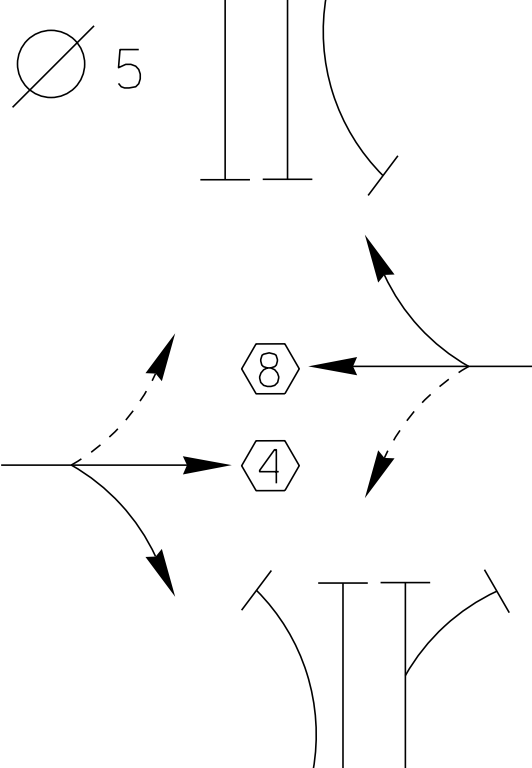



12'

12'

12'

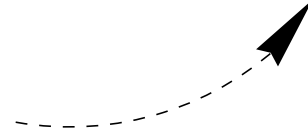
US-7 SOUTH

NOT TO SCALE

<p style="writing-mode: vertical-rl; transform: rotate(180deg);">D I A G R A M</p> 	<p>Ø 1</p> 	<p>Ø 2</p> 	<p>Ø 3</p> 	<p>Ø 4</p> 
<p>TIMING</p>	<p>G = Y =</p>	<p>G = Y =</p>	<p>G = Y =</p>	<p>G = Y =</p>
<p style="writing-mode: vertical-rl; transform: rotate(180deg);">D I A G R A M</p>	<p>Ø 5</p> 	<p>Ø 6</p> 	<p>Ø 7</p> 	<p>Ø 8</p> 
<p>TIMING</p>	<p>G = Y =</p>	<p>G = Y =</p>	<p>G = Y =</p>	<p>G = Y =</p>



PROTECTED  
TURNS



PERMITTED  
TURNS  
PEDESTRIAN

CYCLE LENGTH, C = \_\_\_\_\_ S



PROPERTY OF:  
VT. AGENCY OF TRANS.  
MAINTENANCE DIV.

IN EMERGENCY CALL:  
DIST. TRANS. OFFICE

773 5826

NIGHTS & WEEKENDS: 773 9101

INTERSECTION NO. MS 305

CONTROLLER  
STOP FLASHING  
STOP TIME

MAIN ON OFF  
STOP TIME AUTO OFF  
STOP TIME ON OFF

TRAFFIC SIGNAL LAYOUT

91/A	92/B	93/C	94/D
91	92	93	94
91/A	92/B	93/C	94/D
91	92	93	94

**DANGER**

115 VOLTS AC

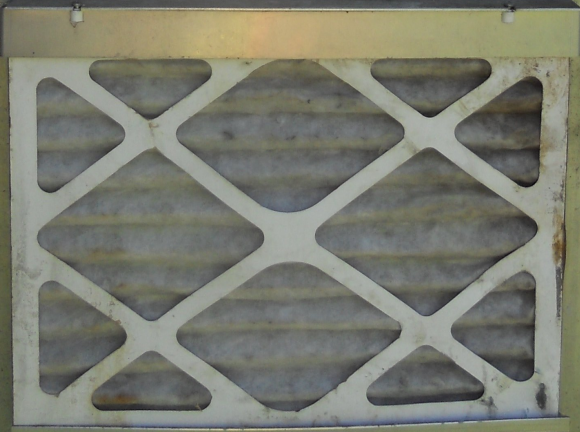
**WARNING**

DO NOT OPERATE  
CABINET WITHOUT  
CONFLICT MONITOR UN

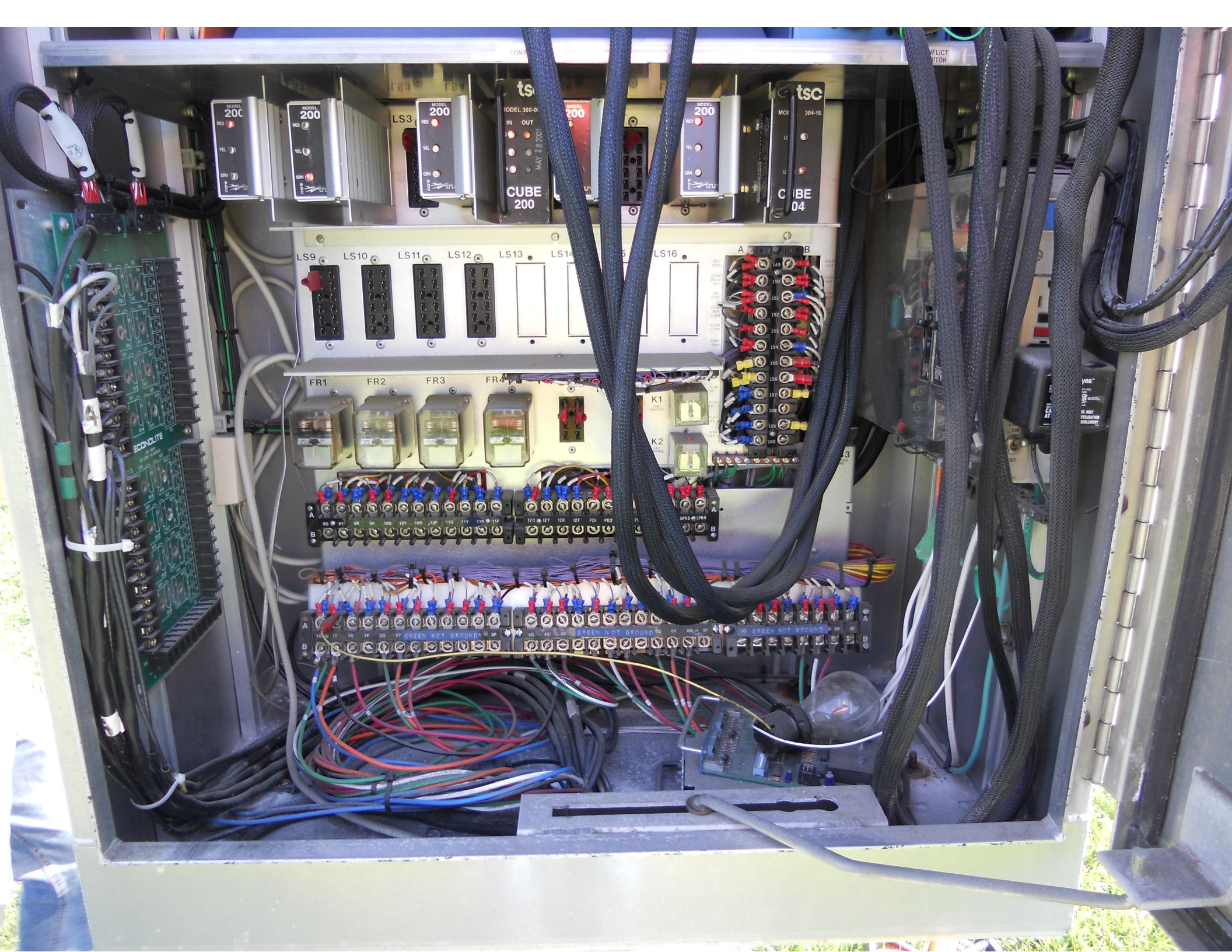
Wiring diagrams and notes:

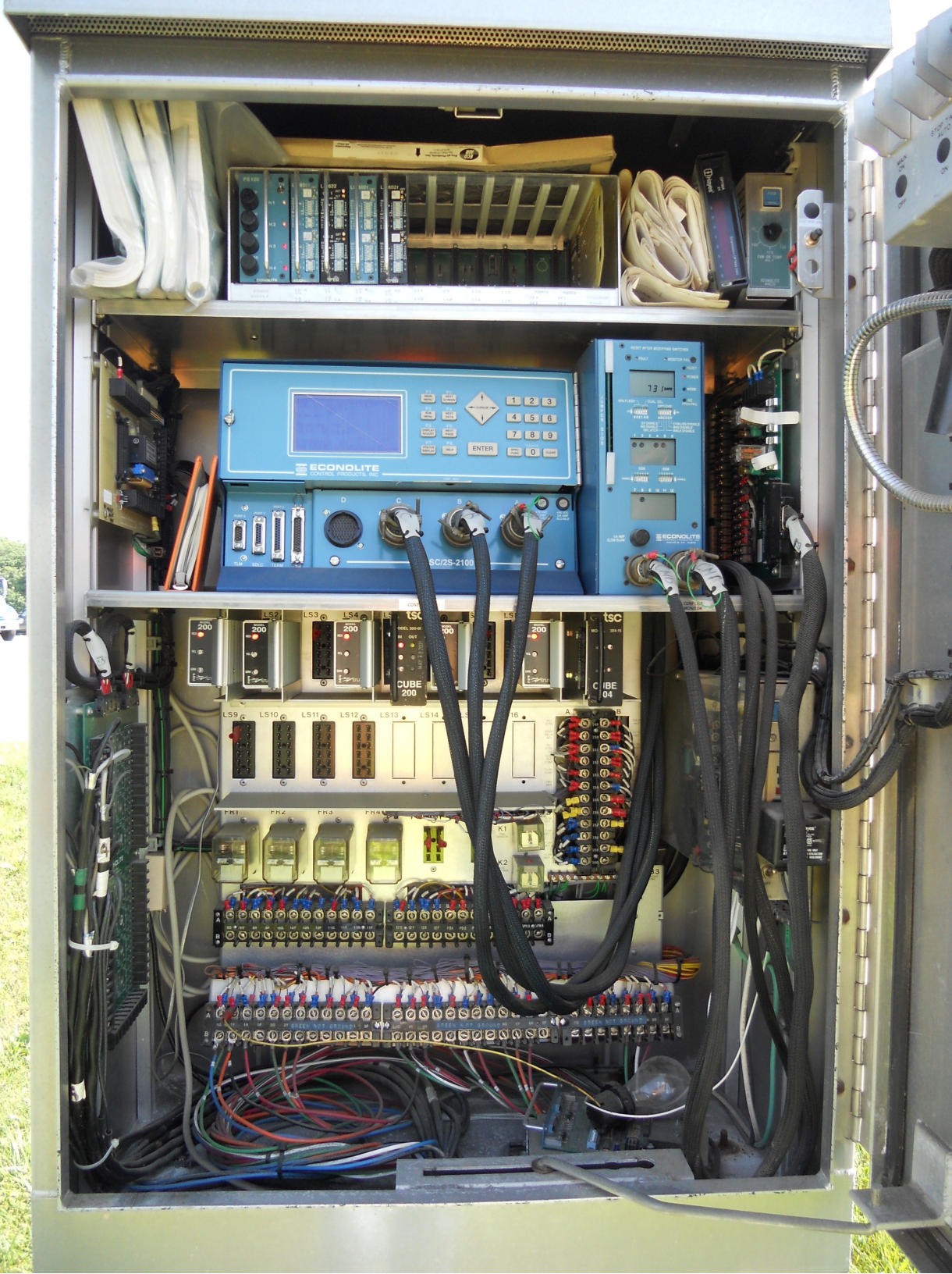
- L1 = 2 lamps (1)
- L2 = 1 lamp (A)
- L3 = 2 lamps (A)
- L4 = 1 lamp (A)
- L5 = 2 lamps (A)
- L6 (S)
- L7 (S)
- L8 (A)

TURNED ON 10-19-95

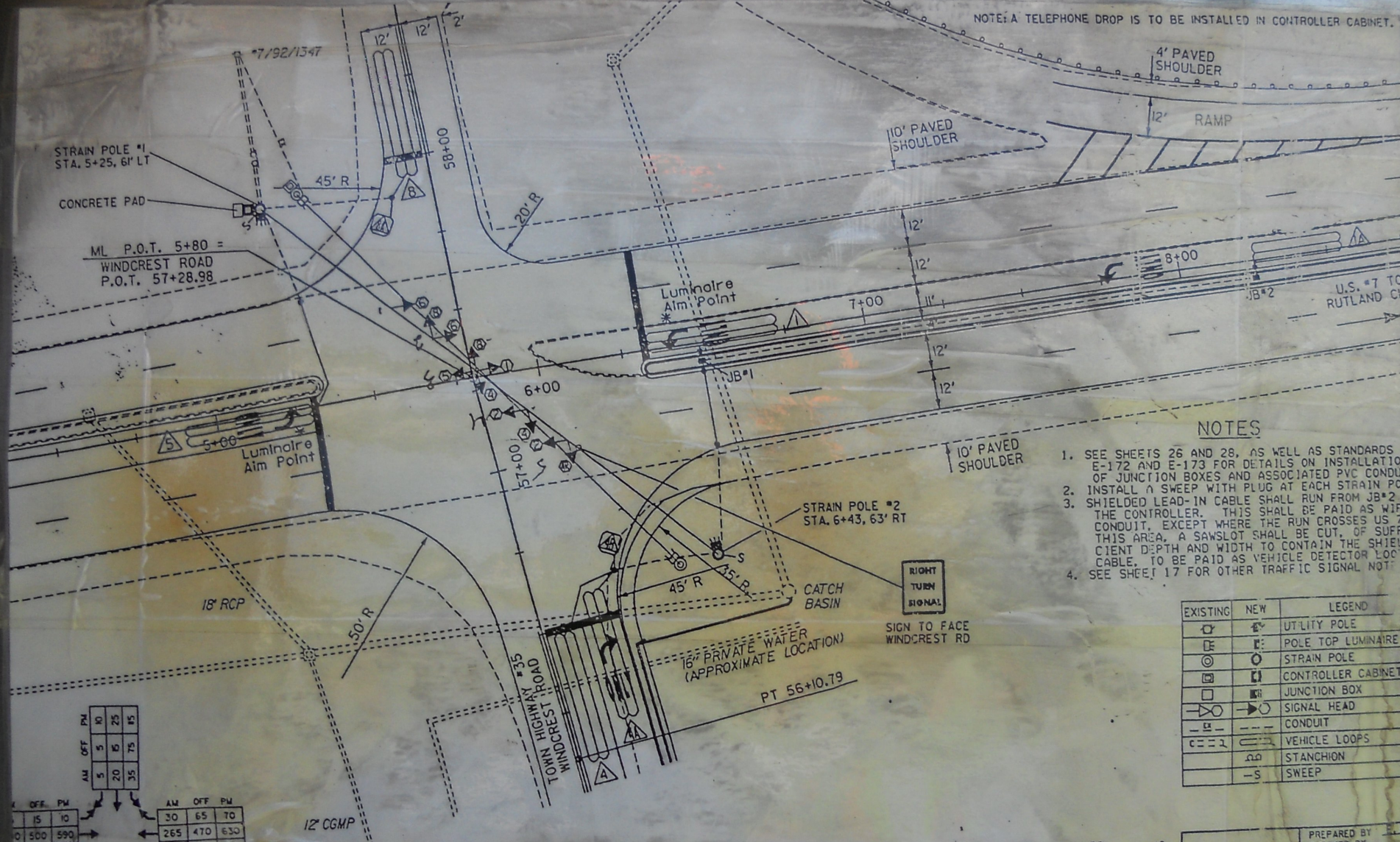








NOTE: A TELEPHONE DROP IS TO BE INSTALLED IN CONTROLLER CABINET.



**NOTES**

1. SEE SHEETS 26 AND 28, AS WELL AS STANDARDS E-172 AND E-173 FOR DETAILS ON INSTALLATION OF JUNCTION BOXES AND ASSOCIATED PVC CONDUIT
2. INSTALL A SWEEP WITH PLUG AT EACH STRAIN POLE
3. SHIELDED LEAD-IN CABLE SHALL RUN FROM JB#2 TO THE CONTROLLER. THIS SHALL BE PAID AS WIRE CONDUIT, EXCEPT WHERE THE RUN CROSSES US 7. THIS AREA, A SAWSLOT SHALL BE CUT, OF SUFFICIENT DEPTH AND WIDTH TO CONTAIN THE SHIELDED CABLE, TO BE PAID AS VEHICLE DETECTOR LOOP
4. SEE SHEET 17 FOR OTHER TRAFFIC SIGNAL NOTES

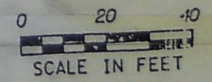
EXISTING	NEW	LEGEND
		UTILITY POLE
		POLE TOP LUMINAIRE
		STRAIN POLE
		CONTROLLER CABINET
		JUNCTION BOX
		SIGNAL HEAD
		CONDUIT
		VEHICLE LOOPS
		STANCHION
		SWEEP

1994 AVERAGE WEEKDAY TRAFFIC

AM	OFF	PM	AM	OFF	PM
5	5	10	30	65	70
10	500	590	265	470	630
5	30	50	270	65	195

AM	OFF	PM	AM	OFF	PM
40	25	120	40	25	230
5	5	10	5	5	10
60			60		



7/traf/91b22t/1b22tbd...  
 7b2210y-1  
 plotted: 29-DEC-1994

**TRAFFIC SIGNAL LAYOUT**

PREPARED BY: [Signature]  
 CHECKER BY: [Signature]  
 DESIGN SUPERVISOR: [Signature]  
 PROJ. NO. [Signature]  
**RU**  
**NHG**  
 TRAFFIC SHEET NO. [Signature]  
 SHEET 14 OF [Signature]



Eco-Air Products, Inc.  
San Diego, CA 92126  
(619) 271-8111

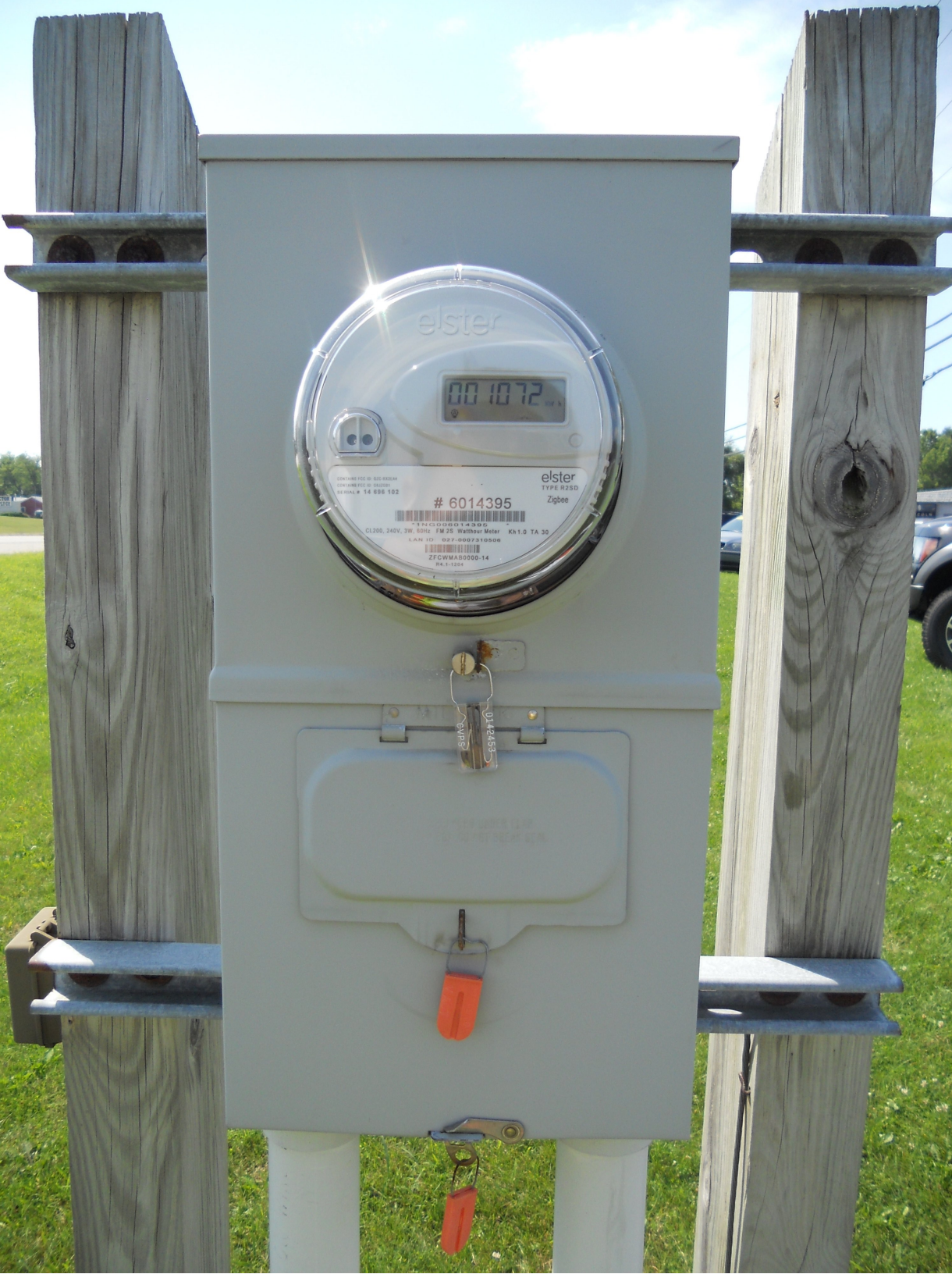
Disposable Air Filter  
As Priced Under Channelmark by Undermark  
Adaptation as to Removability Only Class 2 54401

12 X 16 X 1

PS 1	LM 602t	M 622	M 602t	M 602t					
CH 1	CH 1	CH 1							
CH 2		CH 2							
CH 3									
CH 4									
POWER SUPPLY	LP 4 L3	LP 1 L1	LP 8 L7	LP 4B L5	L11	L9	L15		L1
	L4 LP 4A	L2 LP 1A	LB LP 8A	L6 LP 5	L12	L10	L16		L1

CONOLITE

ADD AIRFLOW IN DIRECTION OF FLOW





ONLY

ROUTE 100



CHEVROLET  
BUICK  
CUMMINS

CHEVROLET

ALPHEUS'S

LEFT LANE  
MUST  
STAY LEFT

EXIT 101  
WEST

Alphus's Books



LEFT LANE  
MUST  
TURN LEFT



USED CARS



WEST 43 EAST 4  
Fair Haven NORTH 7 Rutland

Windcrest Road →













M K 2  
5749  
14 IN  
48 KSI

37  
O G A





ONLY







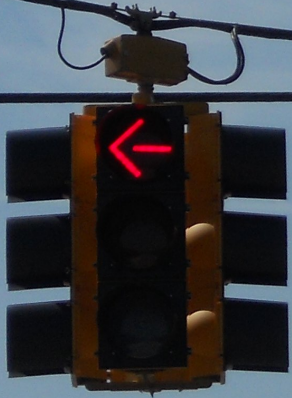
General

ULA FORD

LEFT TURN  
OR  
U TURN  
←







Middle Road →

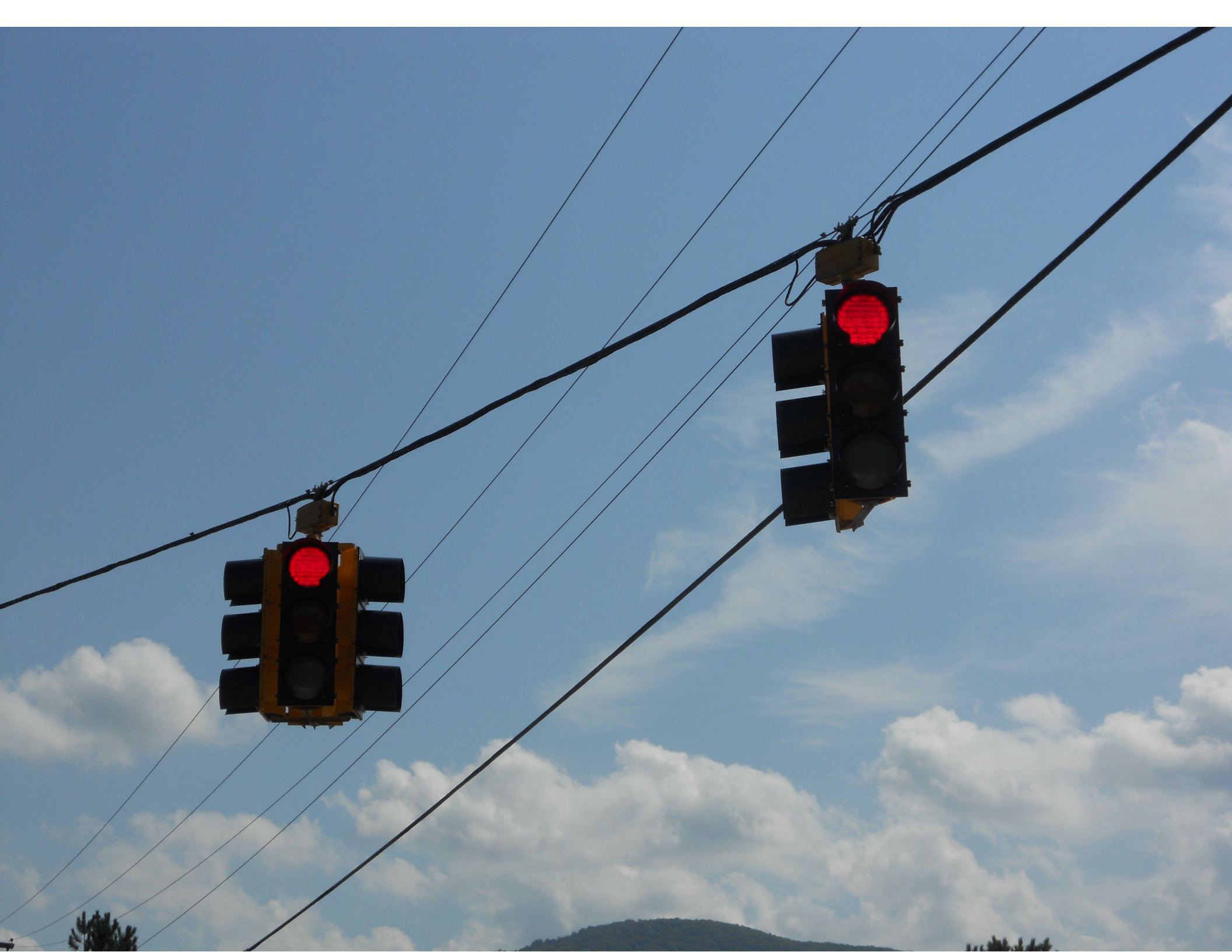
← Windcrest Road















MKT  
5742  
11 IN 1/2  
OICA

MK1

5749

14 IN 35

48 KSI OGA







NIC Program Steps

-----

Step	Program	Step Begins	Pattern	Override
------	---------	-------------	---------	----------

TOD Program Steps

-----

Step 1            Program 1            Step Begins    0530

Flash. . . . .	.	Dimming Enable. . . . .
Red Rest . . . . .	.	Alt Veh Extension . . . . .
Spare 5. . . . .	.	Det Log Enable. . . . .
Spare 3. . . . .	.	Spare 4 . . . . .
Type 0 Dly Enable. . . . .	.	Spare 2 . . . . .
Det Diag Plan. . . . .	0	

Phase Number

		1	2	3	4	5	6	7	8	9	10	11	12
Max 2 Enable . . . . .	.	.	.	.	.	.	.	.	.	.	.	.	.
Max 3 Enable . . . . .	.	.	.	.	.	.	.	.	.	.	.	.	.
Veh Recall . . . . .	.	.	.	.	.	.	.	.	.	.	.	.	.
Veh Max Recall . . . . .	.	.	.	.	.	.	.	.	.	.	.	.	.
Ped Recall . . . . .	.	.	.	.	.	.	.	.	.	.	.	.	.
Cond Service Inhibit. . . . .	.	.	.	.	.	.	.	.	.	.	.	.	.
Phase Omit . . . . .	.	.	.	.	.	.	.	.	.	.	.	.	.
Special Function . . . . .	.	.	.	.	.	.	.	.	.	.	.	.	.

A    B    C    D    E    F

Alt Sequence . . . . .    .    .    .    .    .

-----

Step 2            Program 1            Step Begins    1200

Flash. . . . .	.	Dimming Enable. . . . .
Red Rest . . . . .	.	Alt Veh Extension . . . . .
Spare 5. . . . .	.	Det Log Enable. . . . .
Spare 3. . . . .	.	Spare 4 . . . . .
Type 0 Dly Enable. . . . .	.	Spare 2 . . . . .
Det Diag Plan. . . . .	0	

Phase Number

		1	2	3	4	5	6	7	8	9	10	11	12
Max 2 Enable . . . . .	X	X	.	X	X	X	.	X	.	.	.	.	.
Max 3 Enable . . . . .	.	.	.	.	.	.	.	.	.	.	.	.	.
Veh Recall . . . . .	.	.	.	.	.	.	.	.	.	.	.	.	.
Veh Max Recall . . . . .	.	.	.	.	.	.	.	.	.	.	.	.	.
Ped Recall . . . . .	.	.	.	.	.	.	.	.	.	.	.	.	.
Cond Service Inhibit. . . . .	.	.	.	.	.	.	.	.	.	.	.	.	.
Phase Omit . . . . .	.	.	.	.	.	.	.	.	.	.	.	.	.
Special Function . . . . .	.	.	.	.	.	.	.	.	.	.	.	.	.

A    B    C    D    E    F

Alt Sequence . . . . .    .    .    .    .    .

-----