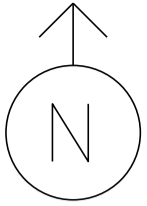


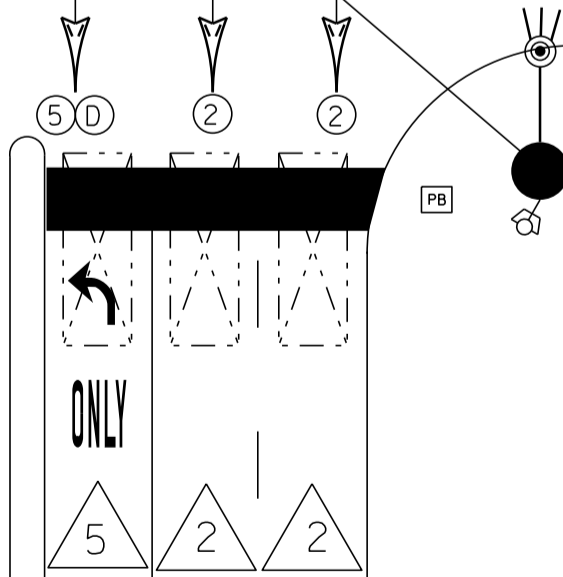
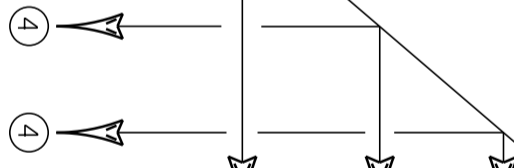
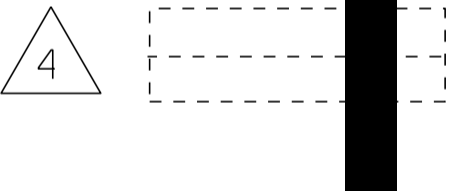
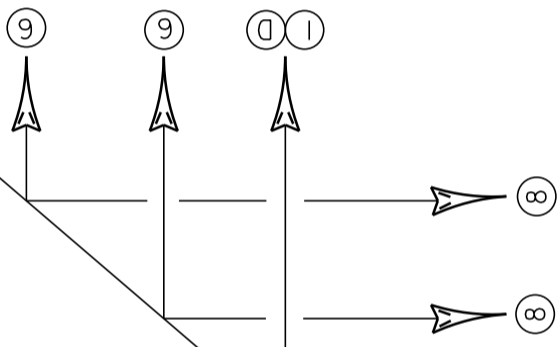
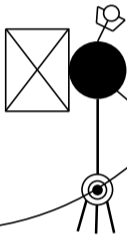
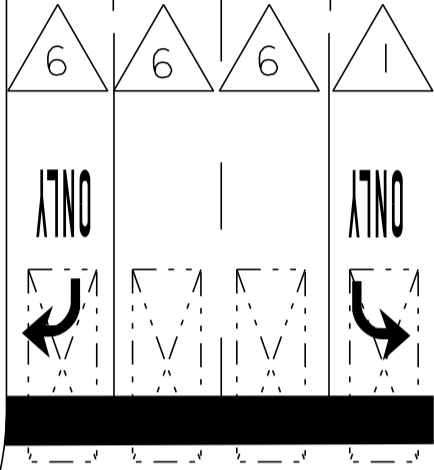
MS # 303

US 7 NORTH



PB [DILEMMA ZONE]

- RADAR DETECTOR
- CONTROL BOX
- LOOP DETECTION
- RADAR DETECTION
- PULL BOX
- LUMINAIRE
- D =



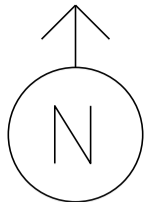
US 7 SOUTH

[DILEMMA ZONE] PB

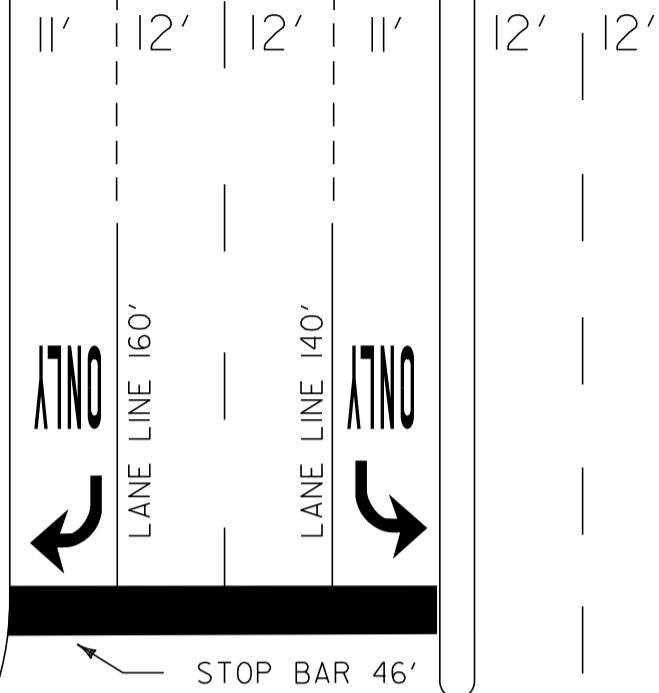
NORTH SHREWSBURY RD

NOT TO SCALE

MS # 303



US 7 NORTH



STOP BAR 50'

11'

14'

10'

STOP BAR 31'

12'

STOP BAR 37'

12' | 12' | 12' | 12' | 12'


LANE LINE 160'

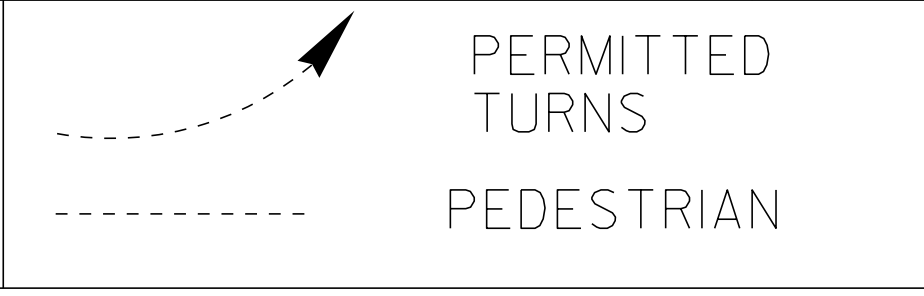
ONLY

US 7 SOUTH

NORTH SHREWSBURY RD

NOT TO SCALE

| | | | | |
|--|--------------------|--------------------|--------------------|--------------------|
| <p style="writing-mode: vertical-rl; transform: rotate(180deg);">D I A G R A M</p>  | | | | |
| <p>TIMING</p> | <p>G = Y =</p> | <p>G = Y =</p> | <p>G = Y =</p> | <p>G = Y =</p> |
| <p style="writing-mode: vertical-rl; transform: rotate(180deg);">D I A G R A M</p> | | | | |
| <p>TIMING</p> | <p>G = Y =</p> | <p>G = Y =</p> | <p>G = Y =</p> | <p>G = Y =</p> |



CYCLE LENGTH, C = _____ S



PROPERTY OF:
VT. AGENCY OF TRANS.
MAINTENANCE DIV.

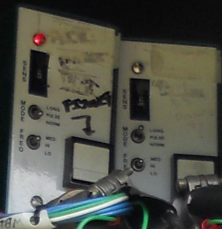
IN EMERGENCY CALL:
DIST. TRANS. OFFICE

773-5225

NIGHTS & WEEKENDS: 77-101



LM 301



RESET AFTER MODIFYING SWITCHES

FAULT MONITOR FAIL

RESET POWER

MODE

MIN FLASH DUAL SEL. OPTIONS

8421 AB ABCDEF

OV ENABLE NO ENABLE VM LATCH

CW LOG DISABLE SWO DISABLE WALK DISABLE

SSM

1/4 AMP SLOW BLOW

ECONOLITE

SC-80

RING STATUS PHASE STATUS COORD STATUS

0 INTERVAL TIMING 1 2 3 4 5 6 7 8

1 2 3

4 5 6

7 8 9

0 CLEAR

F1 MAIN MENU F2 SUB-MENU F3 PAGE UP F4 PAGE DOWN F5 DISPLAY ADJUST F6 STATUS DISPLAY

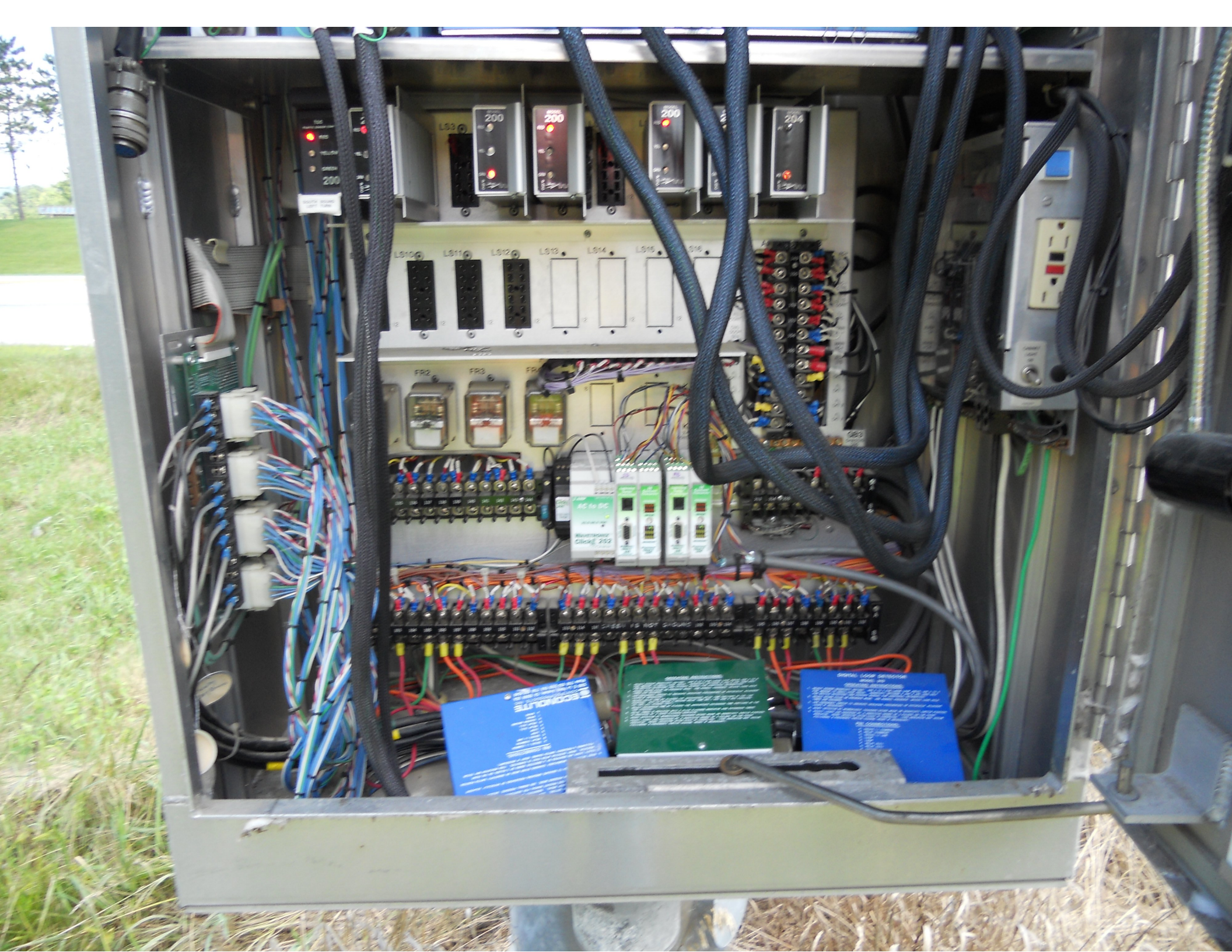
TELEMETRY

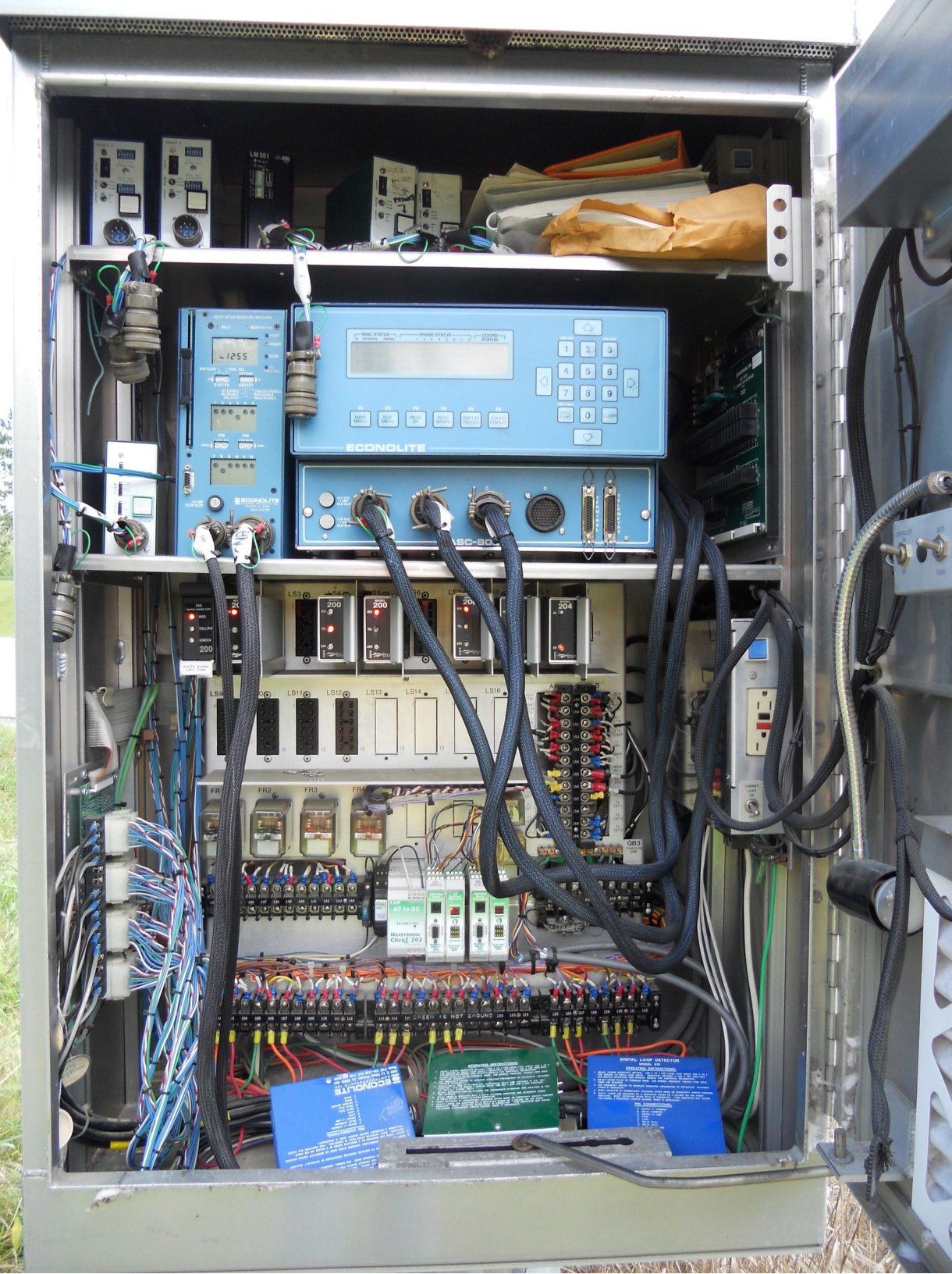
+24 VDC 1 AMP SLO-BLO

+115 VAC 1 AMP SLO-BLO



SOUTH BOUND LEFT TURN





SERIES 2

ON

1 1 2 4 8
2 3 4 5 6

EXTEND (SEC)

1 1 2 4 8
2 3 4 5 6

DELAY (SEC)

LONG PULSE NORM

1 2 4 8 16 32

ON

1 2 3 4 5 6

MED HI LO

1/4 ASB



SERIES 2

ON

1 1 2 4 8
2 3 4 5 6

EXTEND (SEC)

1 1 2 4 8
2 3 4 5 6

DELAY (SEC)

LONG PULSE NORM

1 2 4 8 16 32

ON

1 2 3 4 5 6

MED HI LO

1/4 ASB



LM 301 EDI

DETECT

FAULT

ON

0 0 0 0

PUL SH

0 1 2

LONG

1/4 A SB



LONG PULSE NORM

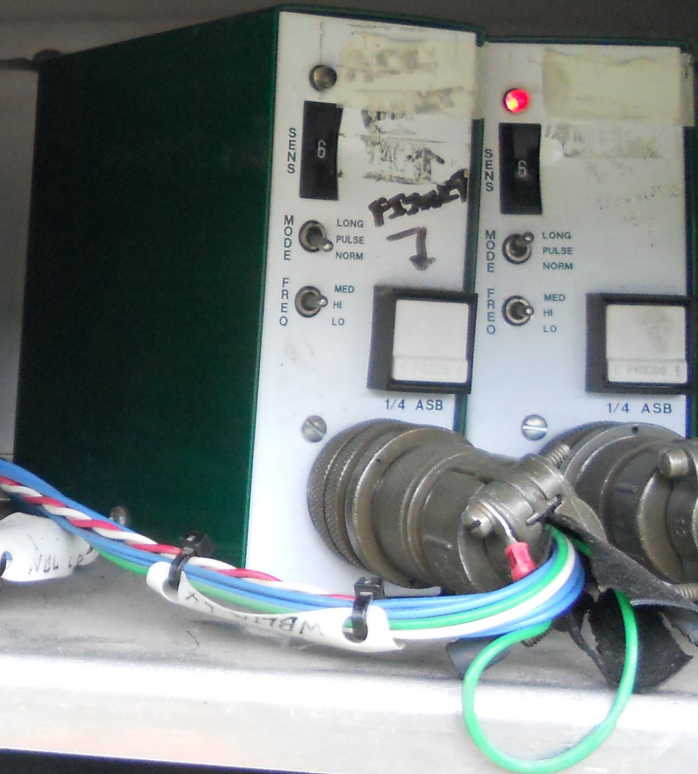
MED HI LO

1/4 ASB

LONG PULSE NORM

MED HI LO

1/4 ASB



RESET AFTER MODIFYING SWITCHES

FAULT

MONITOR FAIL

RESET





CONTAINS FCC ID: GIC-8828AA
CONTAINS FCC ID: GIC8828A
SERIAL # 14 698 508

6014801

elster
TYPE R2SD
Zigbee

INCIDENTAL
CL1200, 240V, 3W, 50Hz, FM 25, Weather Meter, Kh1.0 TA 30
LAN ID: 027-0007310912
ZFCWMA80000-14
04-1-1204

01061239
CVPS

01061239



NORTH
7
←

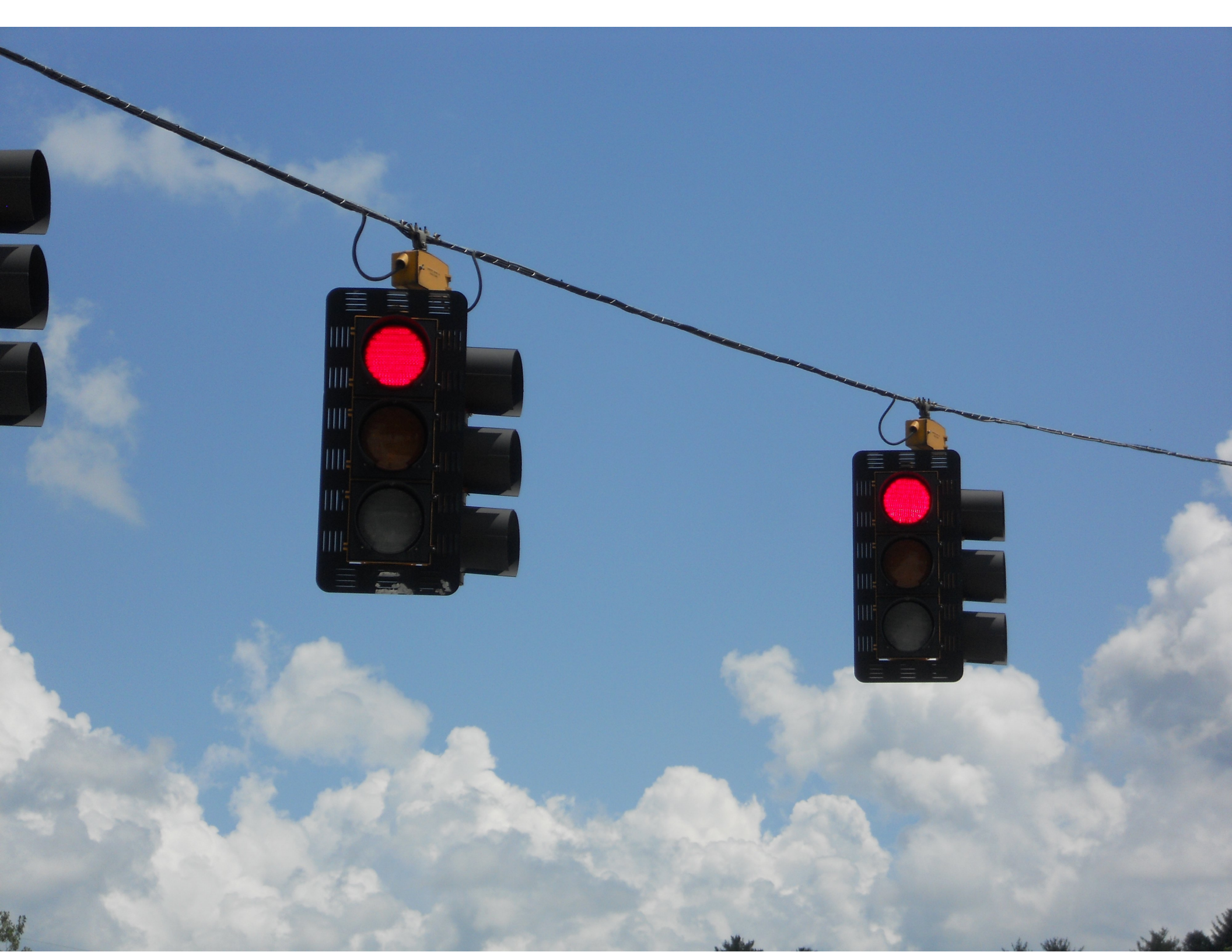
SOUTH
7
→

ONE WAY
→

STOP













LEFT LANE
MUST
TURN LEFT

↑

N. SPENCER RD





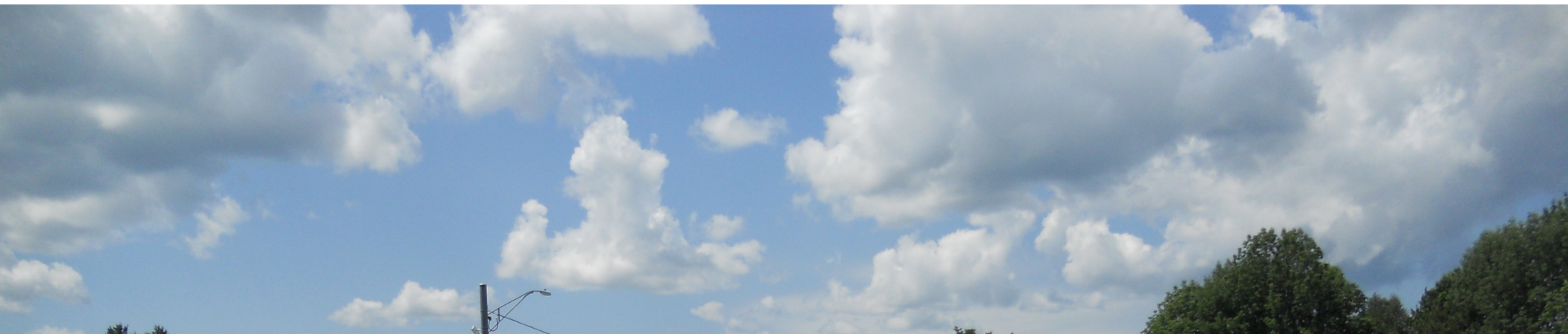


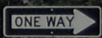


4 1/2 3 4
8 k 9 10 G A

N. SHREWSBURY RD.



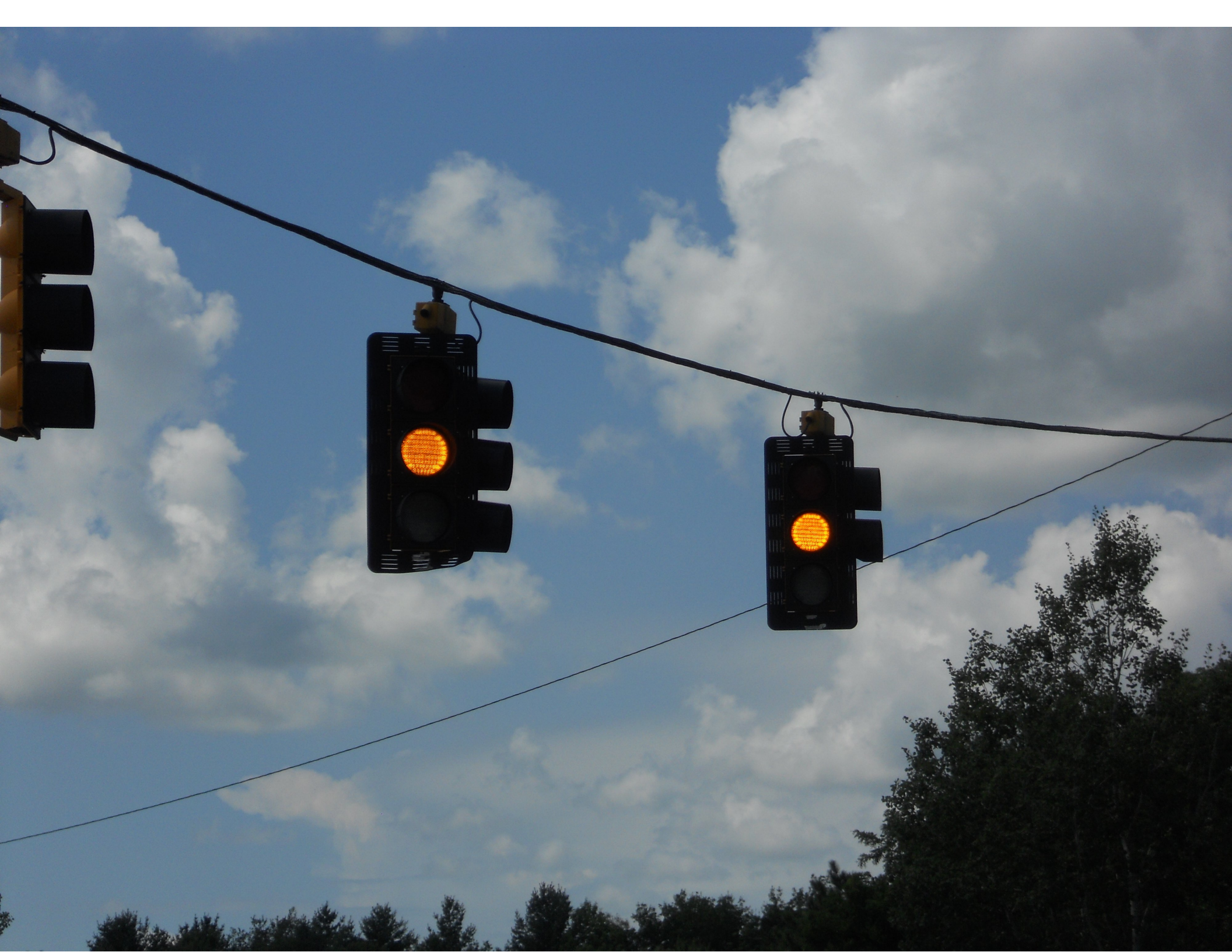






ONE WAY











LEFT LANE
MUST
TURN LEFT

7

YAMAHA









NIC Program Data

| Step No. | Pgm | Time | Cycle | Offset | Split | Flash | Dim | Max2 | Max3 | Sp Functions | | | |
|----------|-----|------|-------|--------|-------|-------|-----|------|------|--------------|---|---|---|
| | | | | | | | | | | 1 | 2 | 3 | 4 |
| 1 | 1 | 0530 | 1 | 0 | 1 | . | . | . | . | . | . | . | . |
| 2 | 1 | 2200 | 1 | 0 | 1 | X | . | . | . | . | . | . | . |
| 3 | 2 | 0630 | 1 | 0 | 1 | . | . | . | . | . | . | . | . |
| 4 | 2 | 2200 | 1 | 0 | 1 | X | . | . | . | . | . | . | . |
| 5 | 3 | 0500 | 1 | 0 | 1 | . | . | . | . | . | . | . | . |
| 6 | 3 | 2100 | 1 | 0 | 1 | X | . | . | . | . | . | . | . |
| 7 | 4 | 0530 | 1 | 0 | 1 | . | . | . | . | . | . | . | . |
| 8 | 4 | 2100 | 1 | 0 | 1 | X | . | . | . | . | . | . | . |
| 9 | 5 | 0630 | 1 | 0 | 1 | . | . | . | . | . | . | . | . |
| 10 | 5 | 2300 | 1 | 0 | 1 | X | . | . | . | . | . | . | . |
| 11 | 6 | 0730 | 1 | 0 | 1 | . | . | . | . | . | . | . | . |
| 12 | 6 | 2300 | 1 | 0 | 1 | X | . | . | . | . | . | . | . |