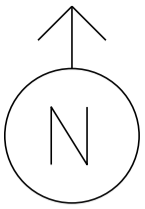
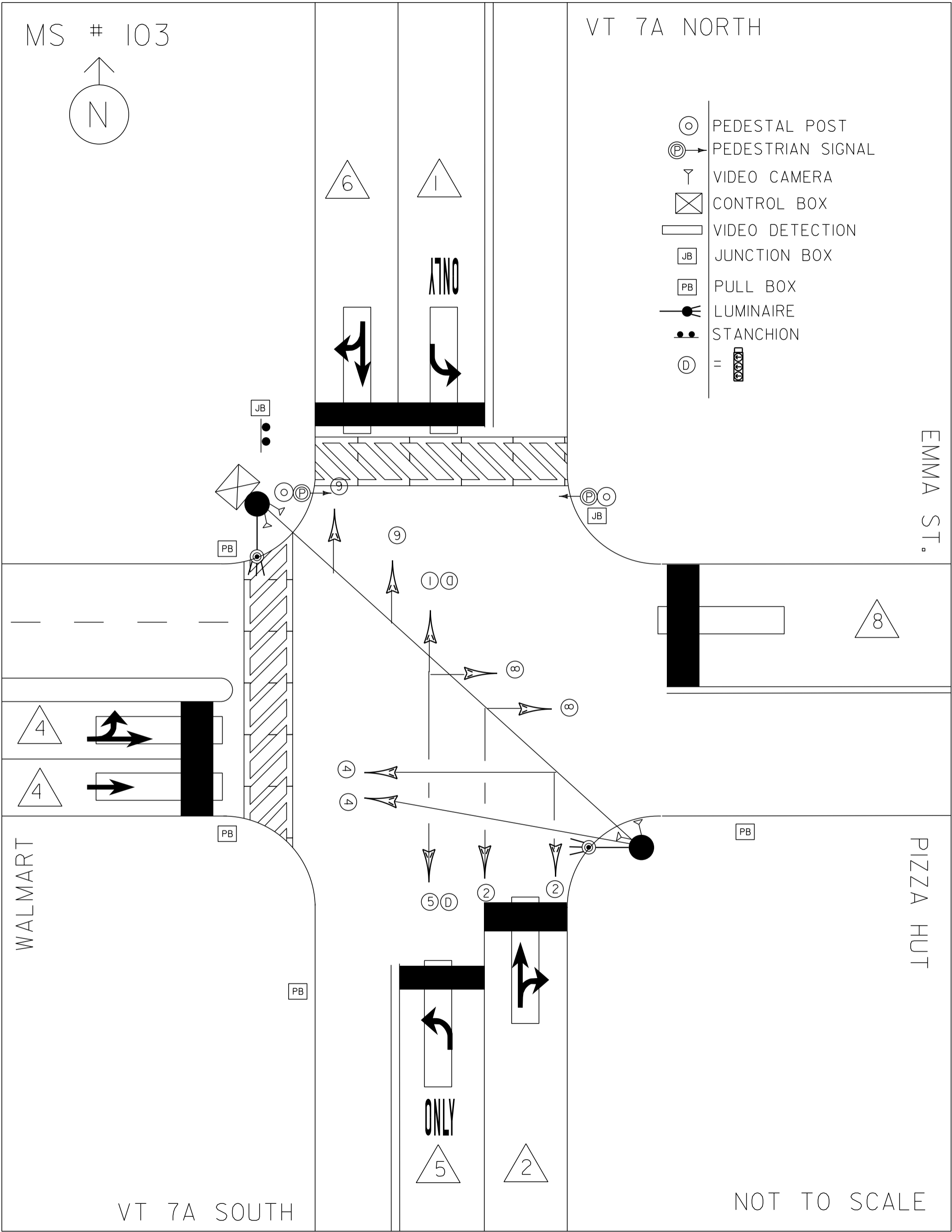


MS # 103

VT 7A NORTH



- PEDESTAL POST
- PEDESTRIAN SIGNAL
- VIDEO CAMERA
- CONTROL BOX
- VIDEO DETECTION
- JUNCTION BOX
- PULL BOX
- LUMINAIRE
- STANCHION
- =



EMMA ST.

PIZZA HUT

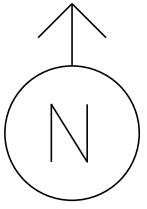
WALMART

VT 7A SOUTH

NOT TO SCALE

MS # 103

VT 7A NORTH



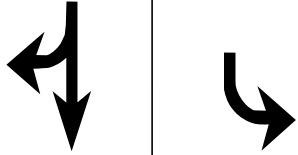
11'

11'

12'

LANE LINE 80'

ONLY



EMMA ST.

CROSSWALK 65'

STOP BAR 28'

12'

12'

STOP BAR 16'

14'

12'

LANE LINE 210'

12'

CROSSWALK 65'

STOP BAR 28'

14'

WALMART

STOP BAR 12'

STOP BAR 11'

PIZZA HUT



ONLY

LANE LINE 115'

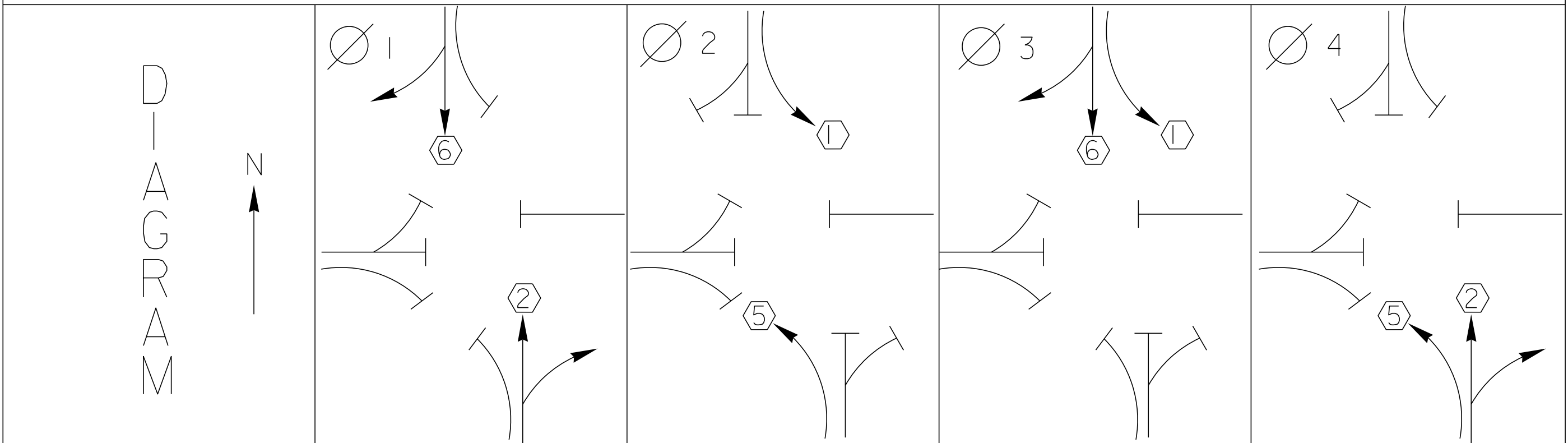
12'

VT 7A SOUTH

11'

11'

NOT TO SCALE



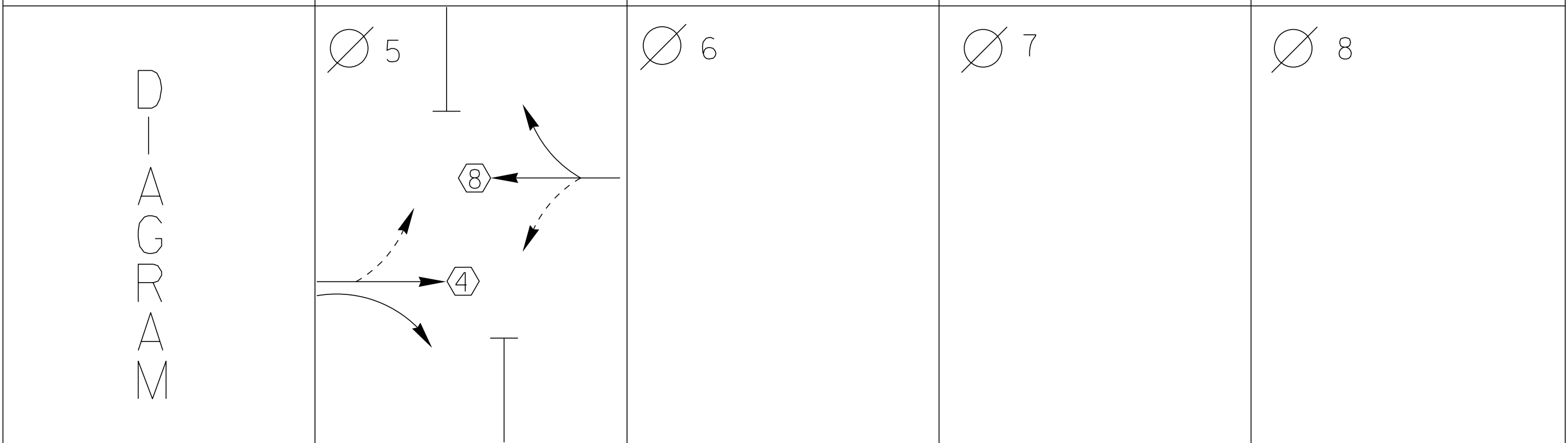
TIMING

G =
Y =

G =
Y =

G =
Y =

G =
Y =



TIMING

G =
Y =

G =
Y =

G =
Y =

G =
Y =

PROTECTED
TURNS

PERMITTED
TURNS
PEDESTRIAN

CYCLE LENGTH, C = _____ S

PROPERTY OF:
VT. AGENCY OF TRANS.
MAINTENANCE DIV.

IN EMERGENCY CALL:
DIST. TRANS. OFFICE

447 2790

NIGHTS & WEEKENDS: 442 5421

INTERSECTION NO. MS 103

WARN
DO NOT OPERATE
CABINET WITHOUT
CONFLICT MOTOR UNIT

DANGER
115 VOLTS A.C.

CONTROLLER ON OFF
AUTO
STOP/TIME AUTO ON OFF
FLASH

TURNED ON
1-8-78

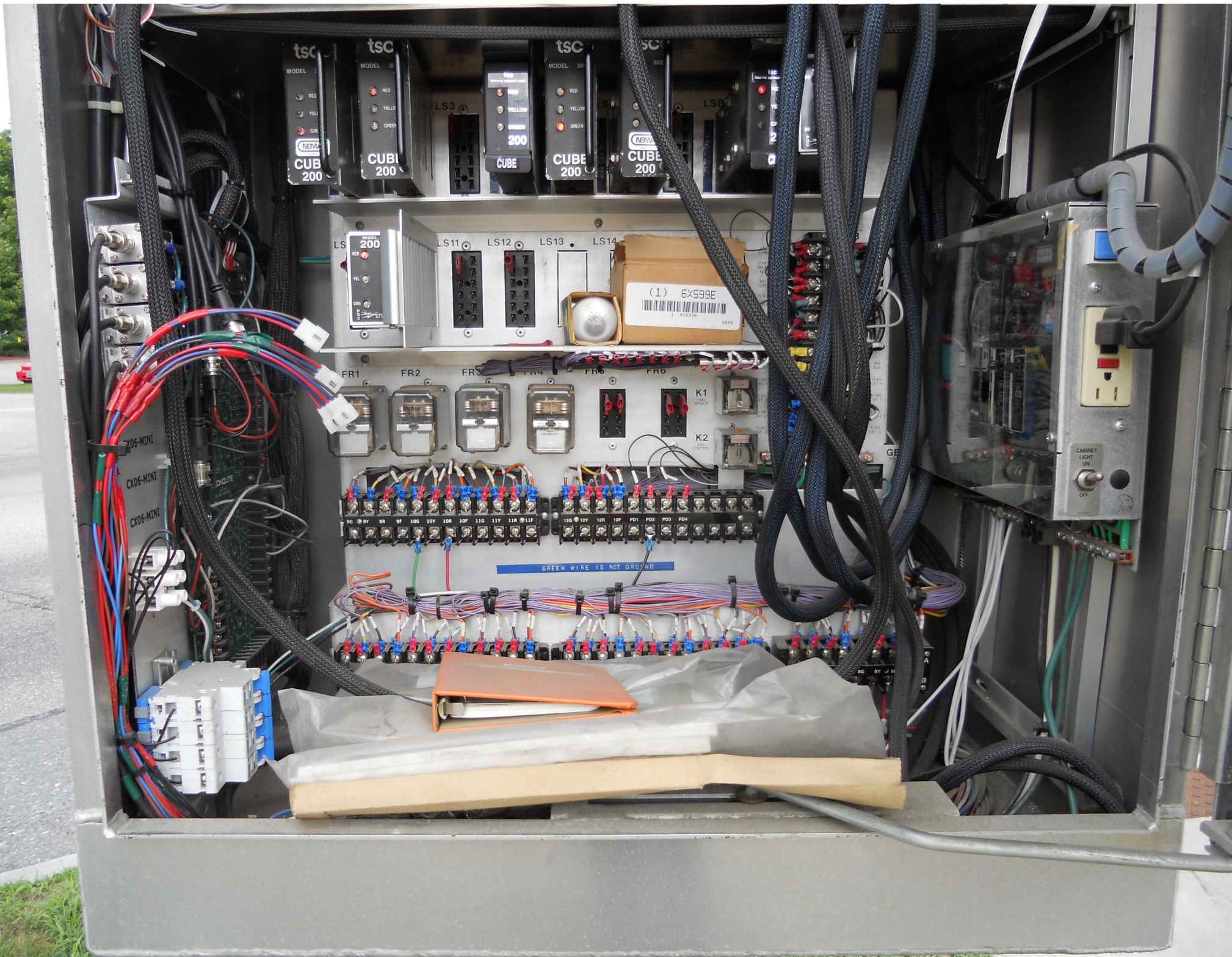
REGISTRATION-BEET TEST
TRAFFIC SIGNAL CONTROLLER FUNCTION

DATE: 1-8-78
OPERATOR: [Signature]
LOCATION: [Signature]
MOTOR UNIT: [Signature]

CONNECT AC SERVICE (AC+) HERE

CONNECT AC NEUTRAL (AC-) HERE





tsc
MODEL 31
RED
YELL
GRN
NEW
CUB 200

tsc
MODEL 31
RED
YELLO
GREEN
NEW
CUB1 200

tsc
MODEL 30
RED
YELLO
GREEN
NEW
CUB2 200

tsc
MODEL 30
RED
YELLO
GREEN
NEW
CUB3 200

tsc
MODEL 30
RED
YELLO
GREEN
NEW
CUB4 200

LS
MODEL 200
RED
YEL
GRN

LS11

LS12

LS13

LS14

(1) 6X599E

FR1

FR2

FR3

FR4

FR5

FR6

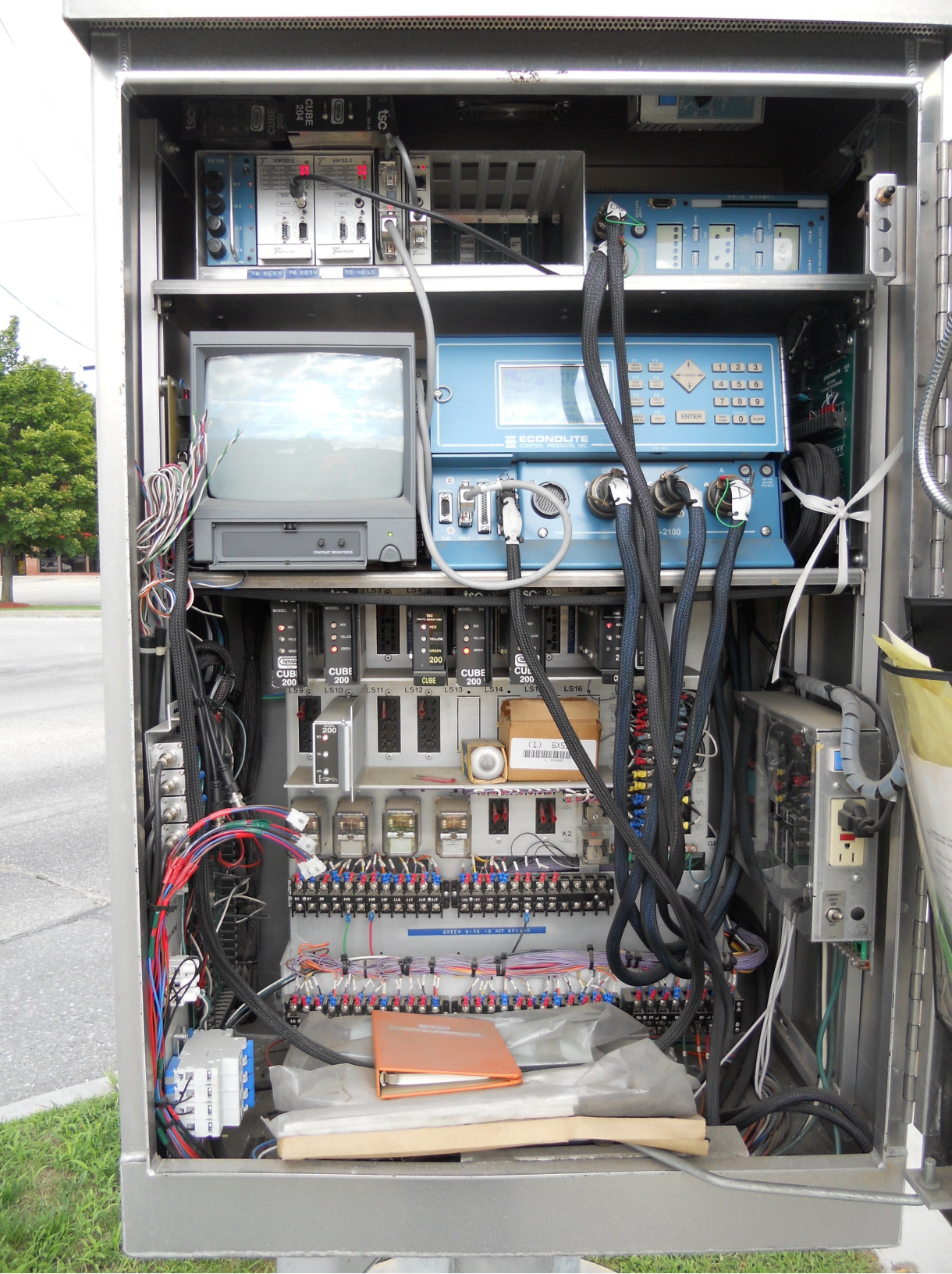
K1

K2

CK06-MINI
CK06-MINI
CK06-MINI

GREEN WIRE IS NOT GROUND

CABINET LIGHT ON



HAZARD OF ELECTRICAL
SHOCK OR BURN
SERVICE BY UTILITY
AUTHORIZED PERSONNEL ONLY
DO NOT PAINT OVER OR REMOVE THIS LABEL
MILWAUKEE CO. GENERAL OFFICE, WIS. 53102-1000

R_r 13 8/9
KILOWATTHOURS

DUNCAN

200 CL FORM 2S TYPE MS
240V TA 30
3W Kh 7.2 60 HZ

20 046 235

SINGLE STATOR WATTHOUR METER
DUNCAN ELECTRIC CO., INC., LAFAYETTE, IND., U.S.A.

LOCKED

**SERVICE
DISCONNECT**
702466-100

OFF 40A
OFF 15A







5 UNLIMITED LUNCH BUFFET









LEFT LANE
MUST
TURN LEFT











55KSI - 1997
SA. B. DIA. HGT.
B. 4E 305MM 9.1M
UNION METAL CORPORATION





VERMONT
AGENCY OF TRANS SURVEY
A01055
INFO CALL
FOR GEODETIC SURVEY

EMMA ST





Walmart

Price Chopper

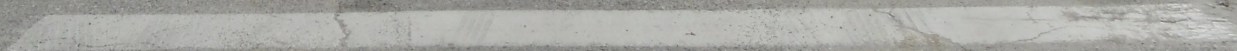
7

518953



Walmart

Price Chopper
SPECIALTY MEATS
PRODUCE
BREADS





art



DUNKIN' DONUTS

IRVING
3.63⁹
clean regular

D
PARTS
LIC
HERE

ONLY
ONLY

REPAIR
573



DUNKIN' DONUTS
DRIVE THRU

DO NOT ENTER

LEFT LANE MUST TURN LEFT

Classic Subs
DRIVE THRU
AT

WE HAVE TICK SPRAY

ONLY

ONLY



LEFT LANE
MUST
TURN LEFT

Walma

chris
SHERIFF
YEARS

Charles N.
GUNS
AT
FISHING
ARCHERY
ARMS

EDT 213















55KSI - 1997
GA. B. DIA. HGT.
6.4E 305MM 9.1M
UNION METAL CORPORATION

Coordination Patterns

```

-----
Pattern 1
Cycle Length . . . 76  COS . . . . . 111
Offset . . . . . 15
Vehicle Permissive . . [1] 0 [2] 0
Vehicle Perm 2 Displacement 0 Phase Reservice. . NO
Splits: Phase 1- 12 2- 48 3- 0 4- 16
          Phase 5- 20 6- 40 7- 0 8- 16
          Phase 9- 0 10- 0 11- 0 12- 0 Split Sum: 0
Split Extension/Ring [1] 0 [2] 0
Split Demand Pattern [1] 0 [2] 0
XRT Pattern. . . 0
  Phase Number: 1 2 3 4 5 6 7 8 9 10 11 12
Coord Phases . . . X . . . X . . . . .
Veh Recall . . . . . . . . . . .
Veh Max Recall . . X . . . X . . . . .
Ped Recall . . . . . . . . . . .
Veh Omit . . . . . . . . . . .
Alt Sequence . . A: . B: . C: . D: . E: . F: .
-----
    
```

```

-----
Pattern 2
Cycle Length . . . 90  COS . . . . . 211
Offset . . . . . 11
Vehicle Permissive . . [1] 0 [2] 0
Vehicle Perm 2 Displacement 0 Phase Reservice. . NO
Splits: Phase 1- 11 2- 58 3- 0 4- 21
          Phase 5- 27 6- 42 7- 0 8- 21
          Phase 9- 0 10- 0 11- 0 12- 0 Split Sum: 0
Split Extension/Ring [1] 0 [2] 0
Split Demand Pattern [1] 0 [2] 0
XRT Pattern. . . 0
  Phase Number: 1 2 3 4 5 6 7 8 9 10 11 12
Coord Phases . . . X . . . X . . . . .
Veh Recall . . . . . . . . . . .
Veh Max Recall . . X . . . X . . . . .
Ped Recall . . . . . . . . . . .
Veh Omit . . . . . . . . . . .
Alt Sequence . . A: . B: . C: . D: . E: . F: .
-----
    
```

```

-----
Pattern 3
Cycle Length . . . 90  COS . . . . . 311
Offset . . . . . 11
Vehicle Permissive . . [1] 0 [2] 0
Vehicle Perm 2 Displacement 0 Phase Reservice. . NO
Splits: Phase 1- 11 2- 58 3- 0 4- 21
          Phase 5- 24 6- 45 7- 0 8- 21
          Phase 9- 0 10- 0 11- 0 12- 0 Split Sum: 0
Split Extension/Ring [1] 0 [2] 0
Split Demand Pattern [1] 0 [2] 0
XRT Pattern. . . 0
  Phase Number: 1 2 3 4 5 6 7 8 9 10 11 12
Coord Phases . . . X . . . X . . . . .
Veh Recall . . . . . . . . . . .
Veh Max Recall . . X . . . X . . . . .
Ped Recall . . . . . . . . . . .
Veh Omit . . . . . . . . . . .
Alt Sequence . . A: . B: . C: . D: . E: . F: .
-----
    
```


NIC Program Steps

Step	Program	Step Begins	Pattern	Override
1	1	0600	1	NO
2	1	0900	2	NO
3	1	1400	3	NO
4	1	1900	1	NO
5	1	2300	0	NO
6	2	0600	1	NO
7	2	0900	2	NO
8	2	1400	3	NO
9	2	2100	1	NO
10	2	2300	0	NO
11	3	0600	1	NO
12	3	1000	2	NO
13	3	1800	1	NO
14	3	2300	0	NO

TOD Program Steps

 Step 1 Program 1 Step Begins 0600

Flash. Dimming Enable.
 Red Rest Alt Veh Extension
 Spare 5. Det Log Enable.
 Spare 3. Spare 4
 Type 0 Dly Enable. . . Spare 2
 Det Diag Plan. . . . 0

	Phase Number											
	1	2	3	4	5	6	7	8	9	10	11	12
Max 2 Enable
Max 3 Enable
Veh Recall
Veh Max Recall	X	.	.	.	X
Ped Recall
Cond Service Inhibit.
Phase Omit
Special Function

Alt Sequence A B C D E F

Step 2 Program 1 Step Begins 0900

Flash. Dimming Enable.
 Red Rest Alt Veh Extension
 Spare 5. Det Log Enable.
 Spare 3. Spare 4
 Type 0 Dly Enable. . . Spare 2
 Det Diag Plan. . . . 0

	Phase Number											
	1	2	3	4	5	6	7	8	9	10	11	12
Max 2 Enable	X	X	X	X	X	X	X	X
Max 3 Enable
Veh Recall
Veh Max Recall	X	.	.	.	X
Ped Recall
Cond Service Inhibit.
Phase Omit
Special Function

Alt Sequence A B C D E F

TOD Program Steps

Step 3 Program 1 Step Begins 1400

Flash. Dimming Enable.
Red Rest Alt Veh Extension
Spare 5. Det Log Enable.
Spare 3. Spare 4
Type 0 Dly Enable. . . Spare 2
Det Diag Plan. . . . 0

Table with 12 columns (Phase Number 1-12) and 8 rows (Max 2 Enable, Max 3 Enable, Veh Recall, Veh Max Recall, Ped Recall, Cond Service Inhibit, Phase Omit, Special Function). Contains 'X' marks in various cells.

Alt Sequence A B C D E F

Step 4 Program 1 Step Begins 1900

Flash. Dimming Enable.
Red Rest Alt Veh Extension
Spare 5. Det Log Enable.
Spare 3. Spare 4
Type 0 Dly Enable. . . Spare 2
Det Diag Plan. . . . 0

Table with 12 columns (Phase Number 1-12) and 8 rows (Max 2 Enable, Max 3 Enable, Veh Recall, Veh Max Recall, Ped Recall, Cond Service Inhibit, Phase Omit, Special Function). Contains 'X' marks in various cells.

Alt Sequence A B C D E F

TOD Program Steps

Step 5 Program 1 Step Begins 2300

Flash. X
Red Rest
Spare 5.
Spare 3.
Type 0 Dly Enable. . .
Det Diag Plan. . . . 0
Dimming Enable.
Alt Veh Extension
Det Log Enable.
Spare 4
Spare 2

Table with 12 columns for Phase Number (1-12) and rows for Max 2 Enable, Max 3 Enable, Veh Recall, Veh Max Recall, Ped Recall, Cond Service Inhibit, Phase Omit, and Special Function.

Alt Sequence
A B C D E F

Step 6 Program 2 Step Begins 0600

Flash.
Red Rest
Spare 5.
Spare 3.
Type 0 Dly Enable. . .
Det Diag Plan. . . . 0
Dimming Enable.
Alt Veh Extension
Det Log Enable.
Spare 4
Spare 2

Table with 12 columns for Phase Number (1-12) and rows for Max 2 Enable, Max 3 Enable, Veh Recall, Veh Max Recall, Ped Recall, Cond Service Inhibit, Phase Omit, and Special Function. Note: Veh Max Recall has 'X' in phase 2 and 6.

Alt Sequence
A B C D E F

TOD Program Steps

 Step 7 Program 2 Step Begins 0900

Flash. Dimming Enable.
 Red Rest Alt Veh Extension
 Spare 5. Det Log Enable.
 Spare 3. Spare 4
 Type 0 Dly Enable. . . Spare 2
 Det Diag Plan. . . . 0

	Phase Number											
	1	2	3	4	5	6	7	8	9	10	11	12
Max 2 Enable	X	X	X	X	X	X	X	X
Max 3 Enable
Veh Recall
Veh Max Recall	X	.	.	.	X
Ped Recall
Cond Service Inhibit.
Phase Omit
Special Function

Alt Sequence A B C D E F

Step 8 Program 2 Step Begins 1400

Flash. Dimming Enable.
 Red Rest Alt Veh Extension
 Spare 5. Det Log Enable.
 Spare 3. Spare 4
 Type 0 Dly Enable. . . Spare 2
 Det Diag Plan. . . . 0

	Phase Number											
	1	2	3	4	5	6	7	8	9	10	11	12
Max 2 Enable
Max 3 Enable	X	X	X	X	X	X	X	X
Veh Recall
Veh Max Recall	X	.	.	.	X
Ped Recall
Cond Service Inhibit.
Phase Omit
Special Function

Alt Sequence A B C D E F

TOD Program Steps

Step 11 Program 3 Step Begins 0600

Flash. Dimming Enable.
Red Rest Alt Veh Extension
Spare 5. Det Log Enable.
Spare 3. Spare 4
Type 0 Dly Enable. . . Spare 2
Det Diag Plan. . . . 0

Table with 12 columns for Phase Number (1-12) and rows for Max 2 Enable, Max 3 Enable, Veh Recall, Veh Max Recall, Ped Recall, Cond Service Inhibit, Phase Omit, and Special Function.

Alt Sequence A B C D E F

Step 12 Program 3 Step Begins 1000

Flash. Dimming Enable.
Red Rest Alt Veh Extension
Spare 5. Det Log Enable.
Spare 3. Spare 4
Type 0 Dly Enable. . . Spare 2
Det Diag Plan. . . . 0

Table with 12 columns for Phase Number (1-12) and rows for Max 2 Enable, Max 3 Enable, Veh Recall, Veh Max Recall, Ped Recall, Cond Service Inhibit, Phase Omit, and Special Function.

Alt Sequence A B C D E F

TOD Program Steps

Step 13 Program 3 Step Begins 1800

Flash. Dimming Enable.
Red Rest Alt Veh Extension
Spare 5. Det Log Enable.
Spare 3. Spare 4
Type 0 Dly Enable. . . Spare 2
Det Diag Plan. . . . 0

Table with 12 columns (Phase Number 1-12) and rows for Max 2 Enable, Max 3 Enable, Veh Recall, Veh Max Recall, Ped Recall, Cond Service Inhibit, Phase Omit, and Special Function.

Alt Sequence A B C D E F

Step 14 Program 3 Step Begins 2300

Flash. X Dimming Enable.
Red Rest Alt Veh Extension
Spare 5. Det Log Enable.
Spare 3. Spare 4
Type 0 Dly Enable. . . Spare 2
Det Diag Plan. . . . 0

Table with 12 columns (Phase Number 1-12) and rows for Max 2 Enable, Max 3 Enable, Veh Recall, Veh Max Recall, Ped Recall, Cond Service Inhibit, Phase Omit, and Special Function.

Alt Sequence A B C D E F