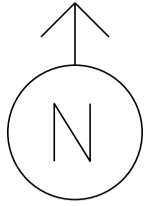


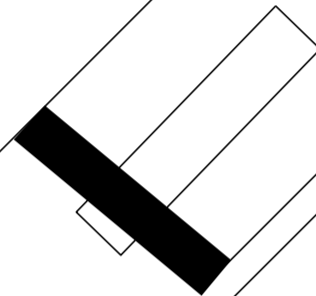
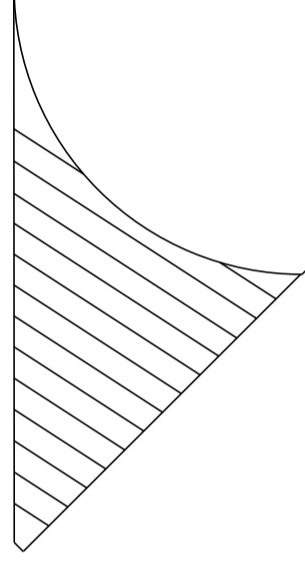
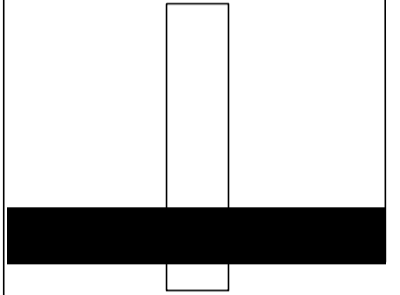
VT 67A NORTH

MS # 102



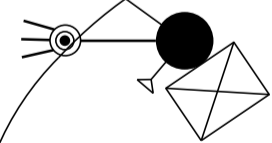
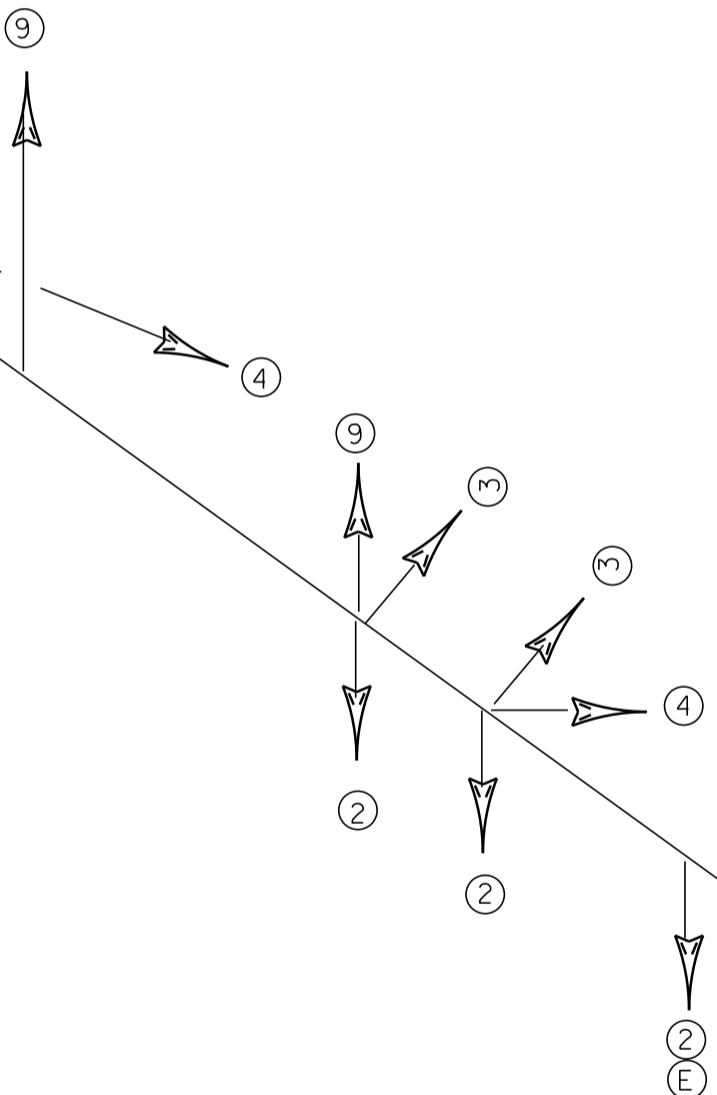
-  VIDEO CAMERA
-  CONTROL BOX
-  VIDEO DETECTION
-  LUMINAIRE
-  STANCHION
-  = 

VT 7A NORTH

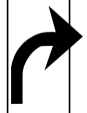


LEGION

PVT DRIVE ONE WAY

ONLY

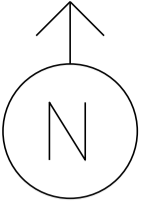


VT 7A SOUTH

NOT TO SCALE

VT 67A NORTH

MS # 102



12'

12'

VT 7A NORTH

12'

12'

STOP BAR 13'

STOP BAR 12'

STOP BAR 13'

12'

12'

LEGION

STOP BAR 25'

PVT DRIVE
ONE WAY

LANE LINE 150'

ONLY
(3)

12'

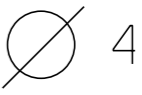
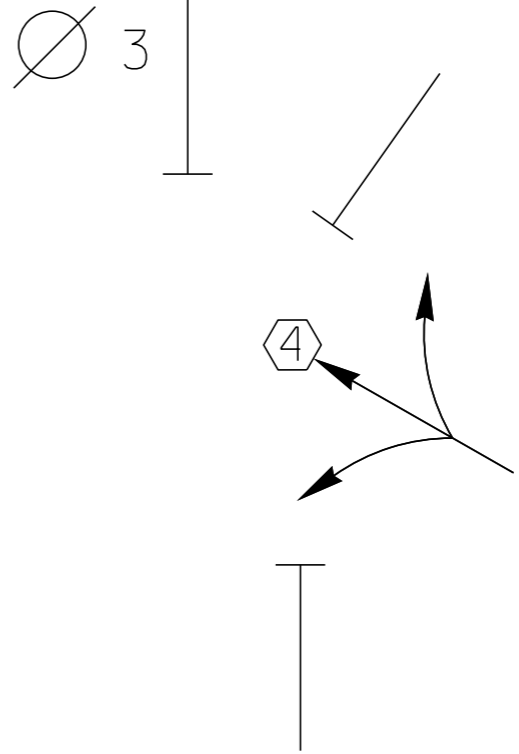
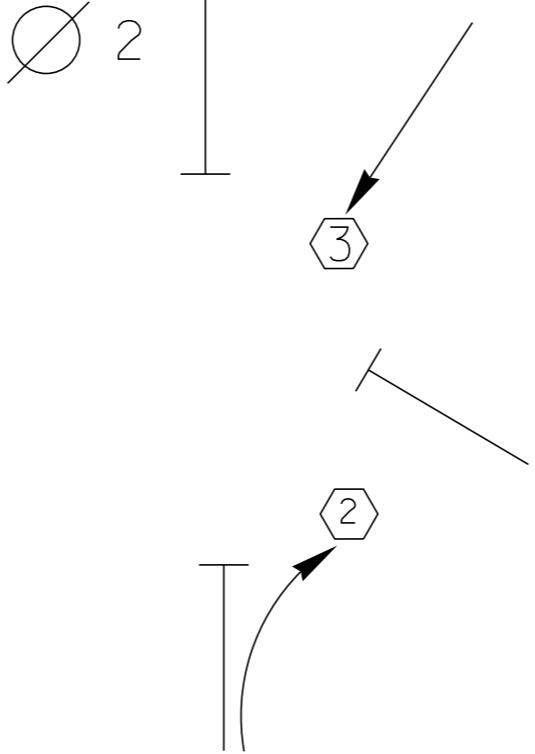
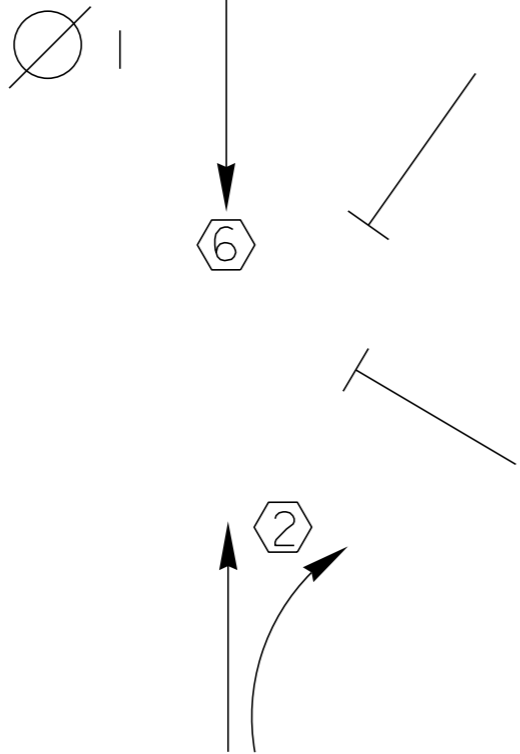
12'

12'

VT 7A SOUTH

NOT TO SCALE

D
I
A
G
R
A
M



T
I
M
I
N
G

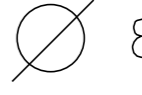
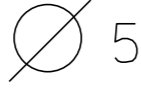
G =
Y =

G =
Y =

G =
Y =

G =
Y =

D
I
A
G
R
A
M



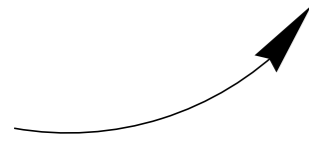
T
I
M
I
N
G

G =
Y =

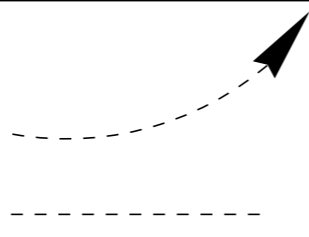
G =
Y =

G =
Y =

G =
Y =



PROTECTED
TURNS



PERMITTED
TURNS
PEDESTRIAN

CYCLE LENGTH, C = _____ S



PROPERTY OF
VT. AGENCY OF TRANS.
MAINTENANCE DIV.
IN EMERGENCY CALL
DIST. TRANSP. OFFICE
NIGHTS & WEEKENDS
INTERSTATE 91 N.C.

PROPERTY OF:
VT. AGENCY OF TRANS.
MAINTENANCE DIV.

IN EMERGENCY CALL:
DIST. TRANS. OFFICE

447 2790

NIGHTS & WEEKENDS: 442 5421

INTERSECTION NO. MS 102

WARNING

DO NOT OPEN
CABINET
CONFLICT M...

12-08-04

C.E.A.

Northside J
Harwood H

INSP. BY
JDM

DANGER

115 VOLT

Economic Control Products, Inc.

TURNOVER ON
1-8-98

INSTALLATION-BACK SIDE
TRAFFIC SIGNAL CONTROLLER POSITION

CONNECT
EARTH GROUND
HERE

CONNECT
AC NEUTRAL AC
HERE

PS 100
H 1
H 2
H 3
H 4
ECONOLITE

VIP/3D.2
ECONOLITE

VIP/3D.2
ECONOLITE

U com
ECONOLITE

ECONOLITE
CONTROL PRODUCTS, INC.
1047

Outputs: 07 08
Inputs:

ECONOLITE
CONTROL PRODUCTS, INC.
2/S-2100

F1 MAIN MENU
F2 NEXT SCREEN
F3 SUB MENU
F4 NEXT DATA
F5 DISPLAY ADJUST
F6 NEXT PAGE
F7

1 2 3
4 5 6
7 8 9
ENTER SPEC FUNC 0 CLEAR

PORT 2
SDLC TERM

D B A

NOISE REDUCTION AMP
LD-BELD

MODEL SSS-864-C
RED IN OUT
YEL IN OUT
GRN IN OUT

MODEL SSS-864-I-O
RED IN OUT
YEL IN OUT
GRN IN OUT

NEVA
CUBE
200

MODEL SSS-864-I-O
RED IN OUT
YEL IN OUT
GRN IN OUT

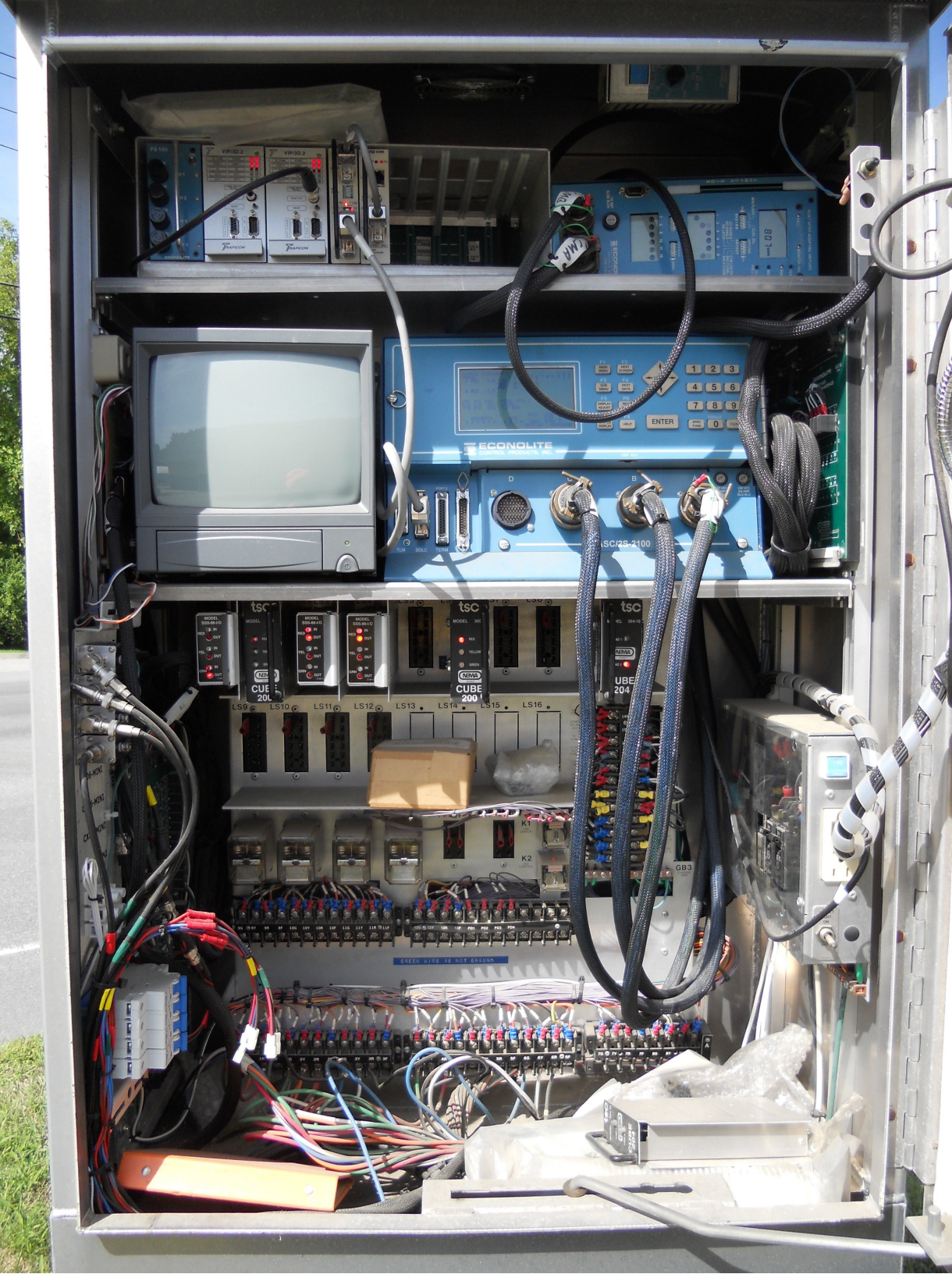
MODEL SSS-864-I-O
RED IN OUT
YEL IN OUT
GRN IN OUT

MODEL 300
RED
YELLOW
GREEN

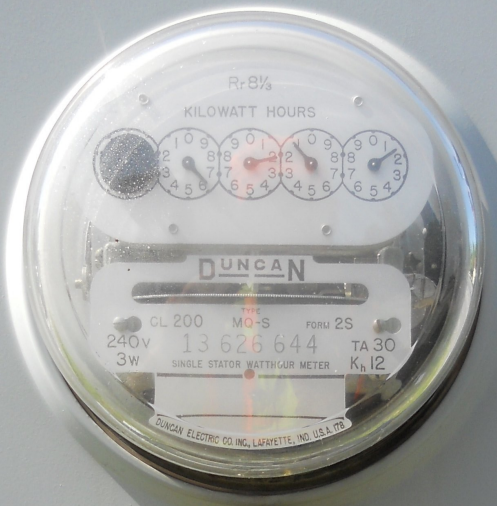
NEVA
CUBE
200

MODEL 304-15
11
12

NEVA
CUBE
200



HAZARD OF ELECTRICAL
SHOCK OR BURN
SERVICE BY UTILITY
AUTHORIZED PERSONNEL ONLY
DO NOT TOUCH OR REMOVE THIS LABEL
MILWAUKEE, WI 53201



SAFETY
1088150



**SERVICE
DISCONNECT**
R2148-40











226

226









POST 43





AMERICAN LEGION
POST 1

END
DISM
↓

STOP
AHEAD







55KSE - 1997
8. DIA. 457
205MM 9. IN
UNION METAL CORPORATION



AMERICAN LEGION
POST 45
BINGO

ONLY













55KSI + 1997
GA. B.DIA. HGT.
6.43E 305MM 9.1M
UNION METAL CORPORATION

Coordination Patterns

```

-----
Pattern 1
Cycle Length . . . 76  COS . . . . . 111
Offset . . . . . 18
Vehicle Permissive . . [1] 0 [2] 0
Vehicle Perm 2 Displacement 0 Phase Reservice. . NO
Splits: Phase 1- 0 2- 41 3- 24 4- 11
          Phase 5- 0 6- 41 7- 0 8- 0
          Phase 9- 0 10- 0 11- 0 12- 0 Split Sum: 0
Split Extension/Ring [1] 0 [2] 0
Split Demand Pattern [1] 0 [2] 0
XRT Pattern. . . 0
  Phase Number: 1 2 3 4 5 6 7 8 9 10 11 12
Coord Phases . . . X . . . X . . . . .
Veh Recall . . . . . . . . . . .
Veh Max Recall . . X . . X . . . . .
Ped Recall . . . . . . . . . . .
Veh Omit . . . . . . . . . . .
Alt Sequence . . A: . B: . C: . D: . E: . F: .
-----
    
```

```

-----
Pattern 2
Cycle Length . . . 90  COS . . . . . 211
Offset . . . . . 41
Vehicle Permissive . . [1] 0 [2] 0
Vehicle Perm 2 Displacement 0 Phase Reservice. . NO
Splits: Phase 1- 0 2- 49 3- 30 4- 11
          Phase 5- 0 6- 49 7- 0 8- 0
          Phase 9- 0 10- 0 11- 0 12- 0 Split Sum: 0
Split Extension/Ring [1] 0 [2] 0
Split Demand Pattern [1] 0 [2] 0
XRT Pattern. . . 0
  Phase Number: 1 2 3 4 5 6 7 8 9 10 11 12
Coord Phases . . . X . . . X . . . . .
Veh Recall . . . . . . . . . . .
Veh Max Recall . . X . . X . . . . .
Ped Recall . . . . . . . . . . .
Veh Omit . . . . . . . . . . .
Alt Sequence . . A: . B: . C: . D: . E: . F: .
-----
    
```

```

-----
Pattern 3
Cycle Length . . . 90  COS . . . . . 311
Offset . . . . . 41
Vehicle Permissive . . [1] 0 [2] 0
Vehicle Perm 2 Displacement 0 Phase Reservice. . NO
Splits: Phase 1- 0 2- 48 3- 31 4- 11
          Phase 5- 0 6- 48 7- 0 8- 0
          Phase 9- 0 10- 0 11- 0 12- 0 Split Sum: 0
Split Extension/Ring [1] 0 [2] 0
Split Demand Pattern [1] 0 [2] 0
XRT Pattern. . . 0
  Phase Number: 1 2 3 4 5 6 7 8 9 10 11 12
Coord Phases . . . X . . . X . . . . .
Veh Recall . . . . . . . . . . .
Veh Max Recall . . X . . X . . . . .
Ped Recall . . . . . . . . . . .
Veh Omit . . . . . . . . . . .
Alt Sequence . . A: . B: . C: . D: . E: . F: .
-----
    
```


NIC Program Steps

Step	Program	Step Begins	Pattern	Override
1	1	0600	1	NO
2	1	0900	2	NO
3	1	1400	3	NO
4	1	1900	1	NO
5	1	2300	0	YES
6	2	0600	1	NO
7	2	0900	2	NO
8	2	1400	3	NO
9	2	2100	1	NO
10	2	2300	0	NO
11	3	0600	1	NO
12	3	1000	2	NO
13	3	1800	1	NO
14	3	2300	0	NO

TOD Program Steps

 Step 1 Program 1 Step Begins 0600

Flash. Dimming Enable.
 Red Rest Alt Veh Extension
 Spare 5. Det Log Enable.
 Spare 3. Spare 4
 Type 0 Dly Enable. . . Spare 2
 Det Diag Plan. . . . 0

Phase Number

	1	2	3	4	5	6	7	8	9	10	11	12
Max 2 Enable
Max 3 Enable
Veh Recall
Veh Max Recall	X	.	.	.	X
Ped Recall
Cond Service Inhibit.
Phase Omit
Special Function

A B C D E F

Alt Sequence

Step 2 Program 1 Step Begins 0900

Flash. Dimming Enable.
 Red Rest Alt Veh Extension
 Spare 5. Det Log Enable.
 Spare 3. Spare 4
 Type 0 Dly Enable. . . Spare 2
 Det Diag Plan. . . . 0

Phase Number

	1	2	3	4	5	6	7	8	9	10	11	12
Max 2 Enable	X	X	X	X	X	X	X	X
Max 3 Enable
Veh Recall
Veh Max Recall	X	.	.	.	X
Ped Recall
Cond Service Inhibit.
Phase Omit
Special Function

A B C D E F

Alt Sequence

TOD Program Steps

 Step 3 Program 1 Step Begins 1400

Flash. Dimming Enable.
 Red Rest Alt Veh Extension
 Spare 5. Det Log Enable.
 Spare 3. Spare 4
 Type 0 Dly Enable. . . Spare 2
 Det Diag Plan. . . . 0

	Phase Number											
	1	2	3	4	5	6	7	8	9	10	11	12
Max 2 Enable
Max 3 Enable	X	X	X	.	X
Veh Recall
Veh Max Recall	X	.	.	.	X
Ped Recall
Cond Service Inhibit.
Phase Omit
Special Function

Alt Sequence A B C D E F

Step 4 Program 1 Step Begins 1900

Flash. Dimming Enable.
 Red Rest Alt Veh Extension
 Spare 5. Det Log Enable.
 Spare 3. Spare 4
 Type 0 Dly Enable. . . Spare 2
 Det Diag Plan. . . . 0

	Phase Number											
	1	2	3	4	5	6	7	8	9	10	11	12
Max 2 Enable
Max 3 Enable
Veh Recall
Veh Max Recall	X	.	.	.	X
Ped Recall
Cond Service Inhibit.
Phase Omit
Special Function

Alt Sequence A B C D E F

TOD Program Steps

 Step 5 Program 1 Step Begins 2300

Flash. X Dimming Enable.
 Red Rest Alt Veh Extension
 Spare 5. Det Log Enable.
 Spare 3. Spare 4
 Type 0 Dly Enable. Spare 2
 Det Diag Plan. 0

Phase Number

	1	2	3	4	5	6	7	8	9	10	11	12
Max 2 Enable
Max 3 Enable
Veh Recall
Veh Max Recall
Ped Recall
Cond Service Inhibit.
Phase Omit
Special Function

A B C D E F

Alt Sequence

Step 6 Program 2 Step Begins 0600

Flash. Dimming Enable.
 Red Rest Alt Veh Extension
 Spare 5. Det Log Enable.
 Spare 3. Spare 4
 Type 0 Dly Enable. Spare 2
 Det Diag Plan. 0

Phase Number

	1	2	3	4	5	6	7	8	9	10	11	12
Max 2 Enable
Max 3 Enable
Veh Recall
Veh Max Recall	X	.	.	.	X
Ped Recall
Cond Service Inhibit.
Phase Omit
Special Function

A B C D E F

Alt Sequence

TOD Program Steps

 Step 7 Program 2 Step Begins 0900

Flash. Dimming Enable.
 Red Rest Alt Veh Extension
 Spare 5. Det Log Enable.
 Spare 3. Spare 4
 Type 0 Dly Enable. . . Spare 2
 Det Diag Plan. . . . 0

	Phase Number											
	1	2	3	4	5	6	7	8	9	10	11	12
Max 2 Enable	X	X	X	.	X
Max 3 Enable
Veh Recall
Veh Max Recall	X	.	.	.	X
Ped Recall
Cond Service Inhibit.
Phase Omit
Special Function

Alt Sequence A B C D E F

Step 8 Program 2 Step Begins 1400

Flash. Dimming Enable.
 Red Rest Alt Veh Extension
 Spare 5. Det Log Enable.
 Spare 3. Spare 4
 Type 0 Dly Enable. . . Spare 2
 Det Diag Plan. . . . 0

	Phase Number											
	1	2	3	4	5	6	7	8	9	10	11	12
Max 2 Enable
Max 3 Enable	X	X	X	.	X
Veh Recall
Veh Max Recall	X	.	.	.	X
Ped Recall
Cond Service Inhibit.
Phase Omit
Special Function

Alt Sequence A B C D E F

TOD Program Steps

Step 9 Program 2 Step Begins 2100

Flash. Dimming Enable.
Red Rest Alt Veh Extension
Spare 5. Det Log Enable.
Spare 3. Spare 4
Type 0 Dly Enable. . . Spare 2
Det Diag Plan. . . . 0

Table with 12 columns for Phase Number (1-12) and rows for Max 2 Enable, Max 3 Enable, Veh Recall, Veh Max Recall, Ped Recall, Cond Service Inhibit, Phase Omit, and Special Function.

Alt Sequence A B C D E F

Step 10 Program 2 Step Begins 2300

Flash. X Dimming Enable.
Red Rest Alt Veh Extension
Spare 5. Det Log Enable.
Spare 3. Spare 4
Type 0 Dly Enable. . . Spare 2
Det Diag Plan. . . . 0

Table with 12 columns for Phase Number (1-12) and rows for Max 2 Enable, Max 3 Enable, Veh Recall, Veh Max Recall, Ped Recall, Cond Service Inhibit, Phase Omit, and Special Function.

Alt Sequence A B C D E F

TOD Program Steps

 Step 11 Program 3 Step Begins 0600

Flash. Dimming Enable.
 Red Rest Alt Veh Extension
 Spare 5. Det Log Enable.
 Spare 3. Spare 4
 Type 0 Dly Enable. . . Spare 2
 Det Diag Plan. . . . 0

	Phase Number											
	1	2	3	4	5	6	7	8	9	10	11	12
Max 2 Enable
Max 3 Enable
Veh Recall
Veh Max Recall	X	.	.	.	X
Ped Recall
Cond Service Inhibit.
Phase Omit
Special Function

Alt Sequence A B C D E F

Step 12 Program 3 Step Begins 1000

Flash. Dimming Enable.
 Red Rest Alt Veh Extension
 Spare 5. Det Log Enable.
 Spare 3. Spare 4
 Type 0 Dly Enable. . . Spare 2
 Det Diag Plan. . . . 0

	Phase Number											
	1	2	3	4	5	6	7	8	9	10	11	12
Max 2 Enable	X	X	X	.	X
Max 3 Enable
Veh Recall
Veh Max Recall	X	.	.	.	X
Ped Recall
Cond Service Inhibit.
Phase Omit
Special Function

Alt Sequence A B C D E F

TOD Program Steps

 Step 13 Program 3 Step Begins 1800

Flash. Dimming Enable.
 Red Rest Alt Veh Extension
 Spare 5. Det Log Enable.
 Spare 3. Spare 4
 Type 0 Dly Enable. . . . Spare 2
 Det Diag Plan. 0

	Phase Number											
	1	2	3	4	5	6	7	8	9	10	11	12
Max 2 Enable
Max 3 Enable
Veh Recall
Veh Max Recall	X	.	.	.	X
Ped Recall
Cond Service Inhibit.
Phase Omit
Special Function

Alt Sequence A B C D E F

Step 14 Program 3 Step Begins 2300

Flash. X Dimming Enable.
 Red Rest Alt Veh Extension
 Spare 5. Det Log Enable.
 Spare 3. Spare 4
 Type 0 Dly Enable. . . . Spare 2
 Det Diag Plan. 0

	Phase Number											
	1	2	3	4	5	6	7	8	9	10	11	12
Max 2 Enable
Max 3 Enable
Veh Recall
Veh Max Recall	X	.	.	.	X
Ped Recall
Cond Service Inhibit.
Phase Omit
Special Function

Alt Sequence A B C D E F
