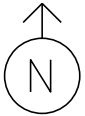


MS # 100

VT 67A NORTH

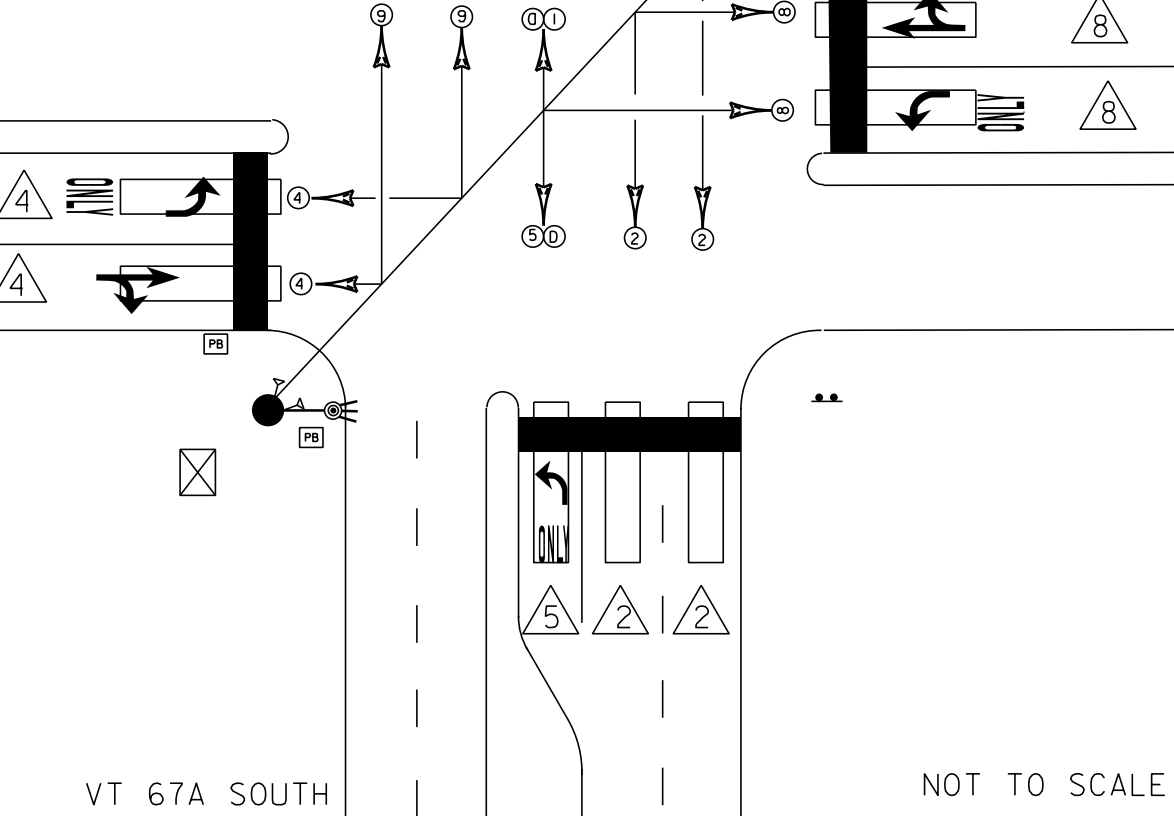


PB

HANNAFORDS

BENNINGTON PLAZA

- PEDESTAL POST
- PEDESTRIAN SIGNAL
- VIDEO CAMERA
- CONTROL BOX
- VIDEO DETECTION
- PULL BOX
- LUMINAIRE
- =

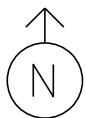


VT 67A SOUTH

NOT TO SCALE

MS # 100

VT 67A NORTH



HANNAFORDS

BENNINGTON PLAZA

12' 12' 12' 12' 12'

LANE LINE 170'
(2)
ONLY

STOP BAR 36'

23'

STOP BAR 30'

LANE LINE 25'

11'

11'

ONLY



LANE LINE 120'

STOP BAR 22'

22'

11'



STOP BAR 43'

ONLY



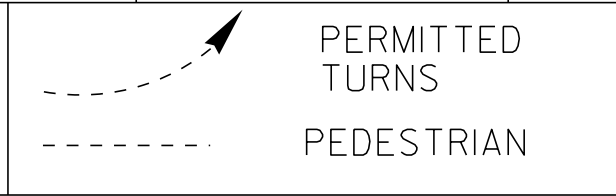
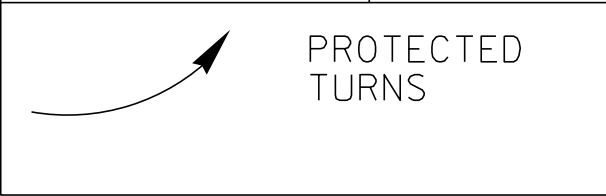
LANE LINE 170'

12' 12' 12' 12' 12'

VT 67A SOUTH

NOT TO SCALE

<p style="text-align: center;">D I A G R A M</p> <p style="text-align: center;">N ↑</p>				
<p style="text-align: center;">T I M I N G</p>	<p>G = _____ Y = _____</p>	<p>G = _____ Y = _____</p>	<p>G = _____ Y = _____</p>	<p>G = _____ Y = _____</p>
<p style="text-align: center;">D I A G R A M</p>				
<p style="text-align: center;">T I M I N G</p>	<p>G = _____ Y = _____</p>	<p>G = _____ Y = _____</p>	<p>G = _____ Y = _____</p>	<p>G = _____ Y = _____</p>



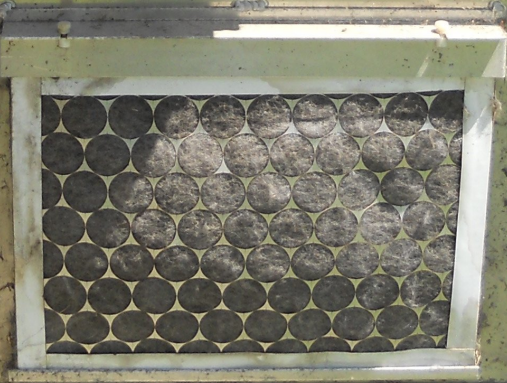
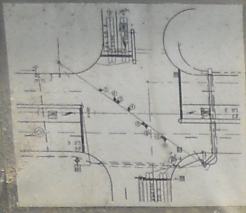
CYCLE LENGTH, C= _____ S



WARNING
DO NOT OPERATE
CABINET WITHOUT
CONFLICT MONITOR UNIT

DANGER
115 VOLTS A.C.

SECONDLITE
CONFLICT MONITOR UNIT
INSTALLATION INSTRUCTIONS
1. The Conflict Monitor Unit (CMU) must be installed in a location that is accessible to the user and protected from weather and physical damage.
2. The CMU must be installed in a location that is not subject to vibration or excessive noise.
3. The CMU must be installed in a location that is not subject to direct sunlight or extreme temperatures.
4. The CMU must be installed in a location that is not subject to moisture or humidity.
5. The CMU must be installed in a location that is not subject to corrosive fumes or vapors.
6. The CMU must be installed in a location that is not subject to electromagnetic interference (EMI).
7. The CMU must be installed in a location that is not subject to radio frequency interference (RFI).
8. The CMU must be installed in a location that is not subject to lightning strikes or other electrical surges.
9. The CMU must be installed in a location that is not subject to fire or explosion hazards.
10. The CMU must be installed in a location that is not subject to theft or vandalism.



31 32 33 34 35

PS
POWER SUPPLY

VIP/3D.2
VIDEO

VIP/3D.2
VIDEO

VU 6000
VIEWCOM



SENSOR AMPS

CONOLITE
CONTROL PRODUCTS, INC.

AS-100

OPTIMA 48
SmartMotion OPTIMA 2400
Hayes

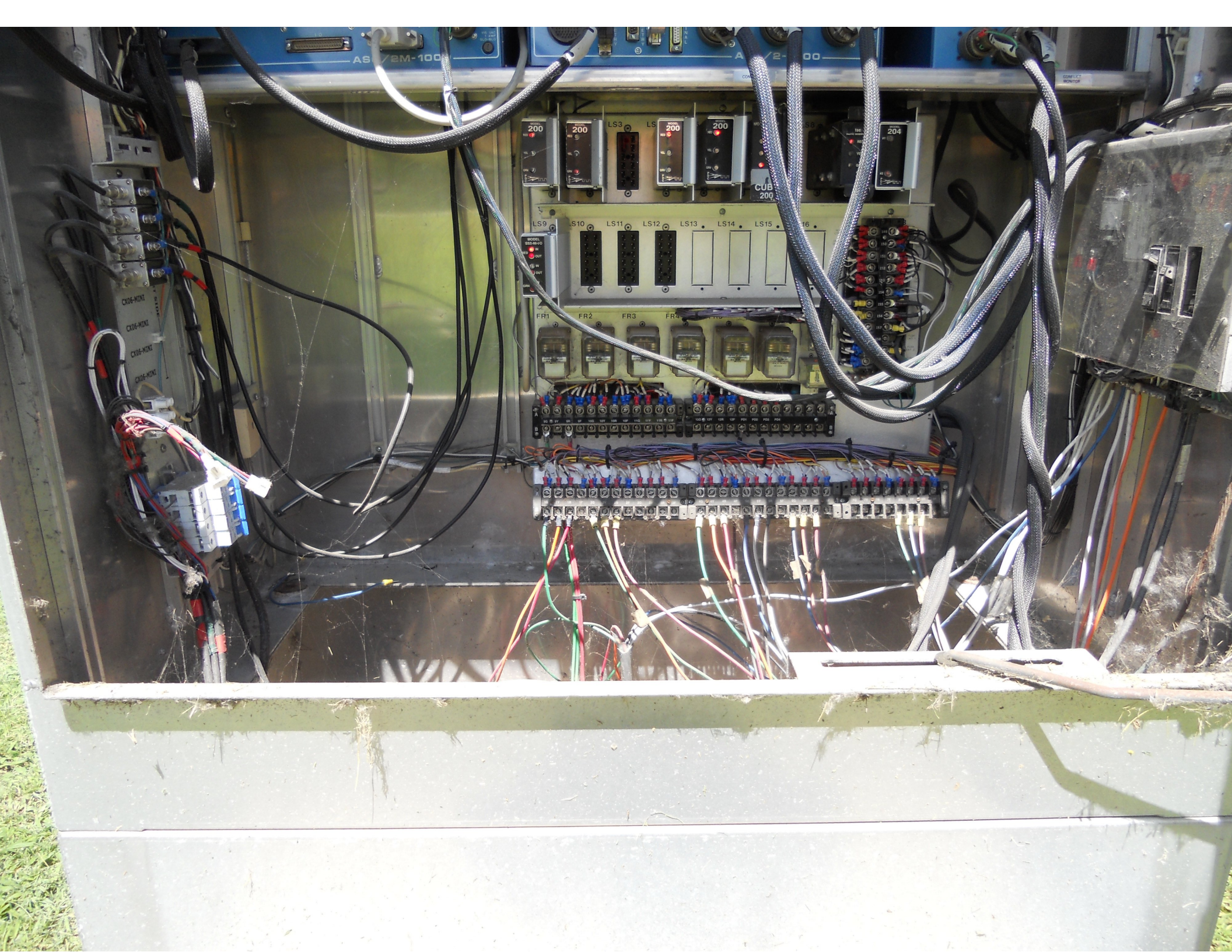
CONOLITE
CONTROL PRODUCTS, INC.

AS-100

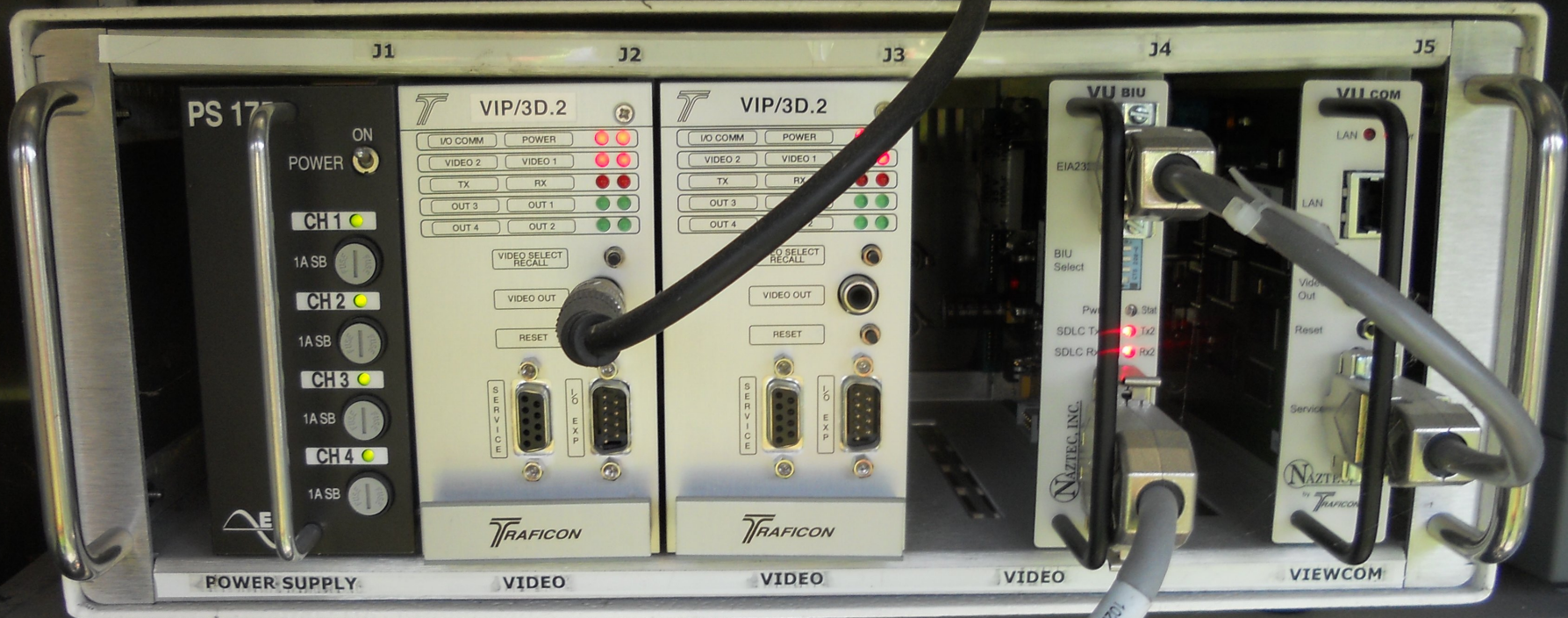
CONOLITE
CONTROL PRODUCTS, INC.

AS-100

200 200 200 204







SENSOR
AMPS



← ↑ →
ONLY

OPEN 24 HOURS
DOLLAR TREE

VA
LEASE FOR LEASE
CALL 843-0841



Vanguard-Fine, LLC
AVAILABLE FOR LEASE
Phone: 862-0861

Walmart

Opening on
THE HOME DEPOT
DOLLAR TREE

ONLY







BENNINGTON PLAZA PVT











#21-250W-H.P.S.-III

CARLAN MFG.
601 Coates Avenue Holbrook, NY 11741
(516) 567-2050

CMC #	14 IN.	PROJ.	32 FT.
LOC #	55 KSI	CODE	3 GA.



DOLLA TREE

ONLY

ONLY

















HANAFORD SQ PVT





HARTFORD CT



THE HOME DEPOT

72









CARLAN MFG.
601 Coates Avenue Holbrook, NY 11741
(516) 567-2050

CMC #	14 IN.	PROJ.	32 FT.
LOC #	55 KSI	CODE	3 GA.

#19-250W-H.P.S.-III

PROPERTY OF
VT. AGENCY OF TRANS
MAINTENANCE DIV
IN EMERGENCY CALL
DIST. TRANS. OFFICE
447-2100
NIGHTS & WEEKENDS

Coordination Patterns

```

-----
Pattern 1
Cycle Length . . . 90   COS . . . . . 111
Offset . . . . . 9
Vehicle Permissive . . [1] 0 [2] 0
Vehicle Perm 2 Displacement 0 Phase Reservice. . NO
Splits:   Phase 1- 27 2- 31 3- 20 4- 32
          Phase 5- 27 6- 31 7- 0 8- 32
          Phase 9- 0 10- 0 11- 0 12- 0   Split Sum: 0
Split Extension/Ring [1] 0 [2] 0
Split Demand Pattern [1] 0 [2] 0
XRT Pattern. . . 0
  Phase Number: 1 2 3 4 5 6 7 8 9 10 11 12
Coord Phases . . . X . . . X . . . . .
Veh Recall . . . . . . . . . . . . .
Veh Max Recall . . . . . . . . . . . .
Ped Recall . . . . . . . . . . . . .
Veh Omit . . . . . . . . . . . . .
Alt Sequence . . A: . B: . C: . D: . E: . F: .
-----
    
```


NIC Program Steps

Step	Program	Step Begins	Pattern	Override
1	1	2300	1	NO
2	1	0600	1	NO

TOD Program Steps

Step 1 Program 1 Step Begins 2300

Flash. X Dimming Enable.
 Red Rest Alt Veh Extension
 Spare 5. Det Log Enable.
 Spare 3. Spare 4
 Type 0 Dly Enable. Spare 2
 Det Diag Plan. 0

	Phase Number											
	1	2	3	4	5	6	7	8	9	10	11	12
Max 2 Enable
Max 3 Enable
Veh Recall
Veh Max Recall
Ped Recall
Cond Service Inhibit.
Phase Omit
Special Function

Alt Sequence A B C D E F

Step 2 Program 1 Step Begins 0600

Flash. Dimming Enable.
 Red Rest Alt Veh Extension
 Spare 5. Det Log Enable.
 Spare 3. Spare 4
 Type 0 Dly Enable. Spare 2
 Det Diag Plan. 0

	Phase Number											
	1	2	3	4	5	6	7	8	9	10	11	12
Max 2 Enable
Max 3 Enable
Veh Recall
Veh Max Recall
Ped Recall
Cond Service Inhibit.
Phase Omit
Special Function

Alt Sequence A B C D E F
