



STATE OF VERMONT  
AGENCY OF TRANSPORTATION  
INTERIALS & RESEARCH SECTION  
SUBSURFACE INFORMATION

BORING LOG

Cohort No.: 03-1 501  
County: Vermont  
Geoplot No.: 011 (20)

Boring No.: 0-10

Page No.: 1 of 2

File No.: 11a210

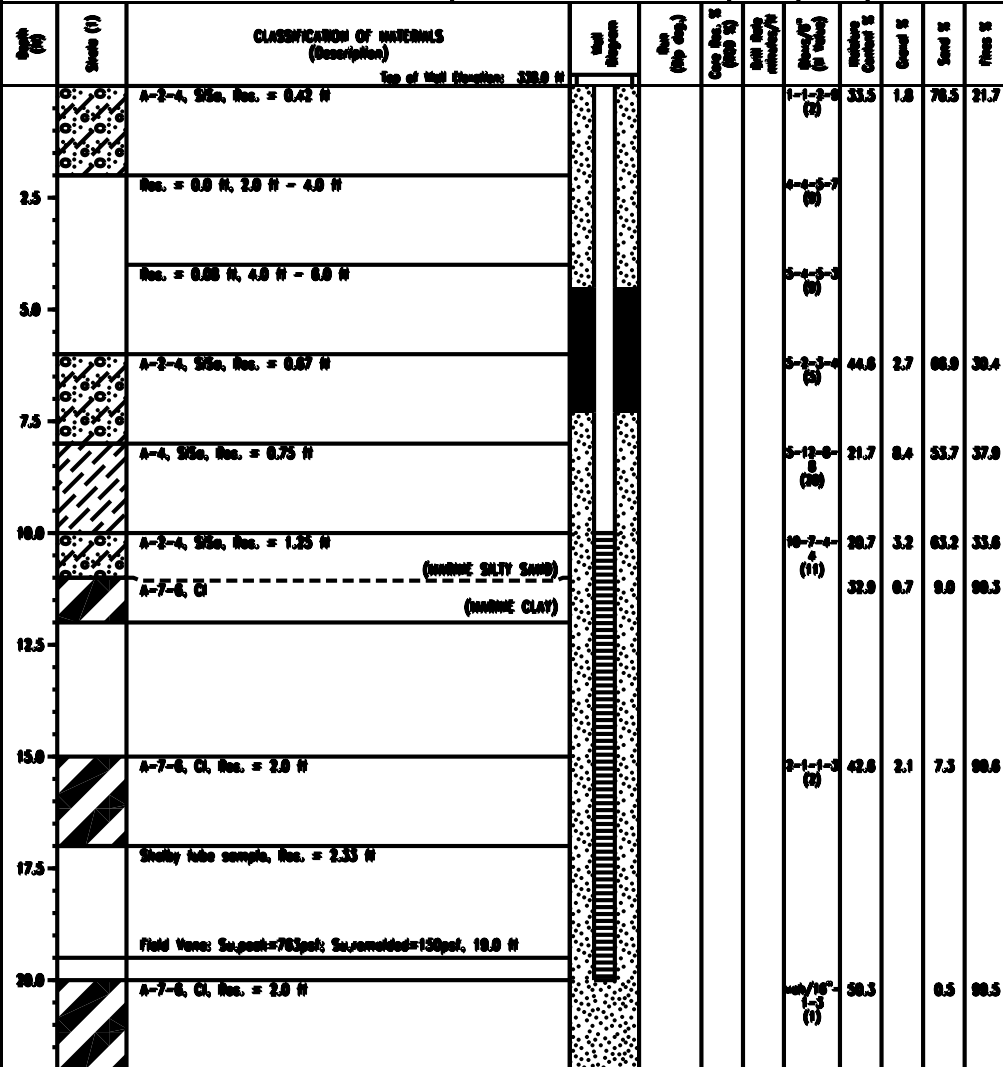
Checked By: ASP

Boring Crew: ME Boring/Bar  
Date Started: 6/03/14 Date Finished: 6/04/14  
VSPG INFO: N 798752.20 H E 1477834.00 H  
Station: 2002+79.50 Offset: 00.33HT  
Ground Elevation: 334.0 H

Coring Sampler  
Type: WASH BORE SS  
I.D.: 4.25 in 2 in  
Hammer Mt: N.A. 140 lb.  
Hammer Fall: N.A. 30 in.  
Hammer/Rod Type: Safety  
Rig: Mobile - 50 CE = 1.33

Groundwater Observations

Date	Depth (ft)	Notes
06/03/14	0.0	AB
06/04/14	1.5	AB



Notes: 1. Stratification does not represent geotechnical boundary between material types. Weather may be present.  
2. If there is a change in material type, the material type is indicated by the symbol in the column to the right of the description.  
3. The top of the boring log may not be at the same level as the ground surface.  
4. The top of the boring log may not be at the same level as the ground surface.  
5. The top of the boring log may not be at the same level as the ground surface.  
6. The top of the boring log may not be at the same level as the ground surface.



STATE OF VERMONT  
AGENCY OF TRANSPORTATION  
INTERIALS & RESEARCH SECTION  
SUBSURFACE INFORMATION

BORING LOG

Cohort No.: 03-1 501  
County: Vermont  
Geoplot No.: 011 (20)

Boring No.: 0-10

Page No.: 2 of 2

File No.: 11a210

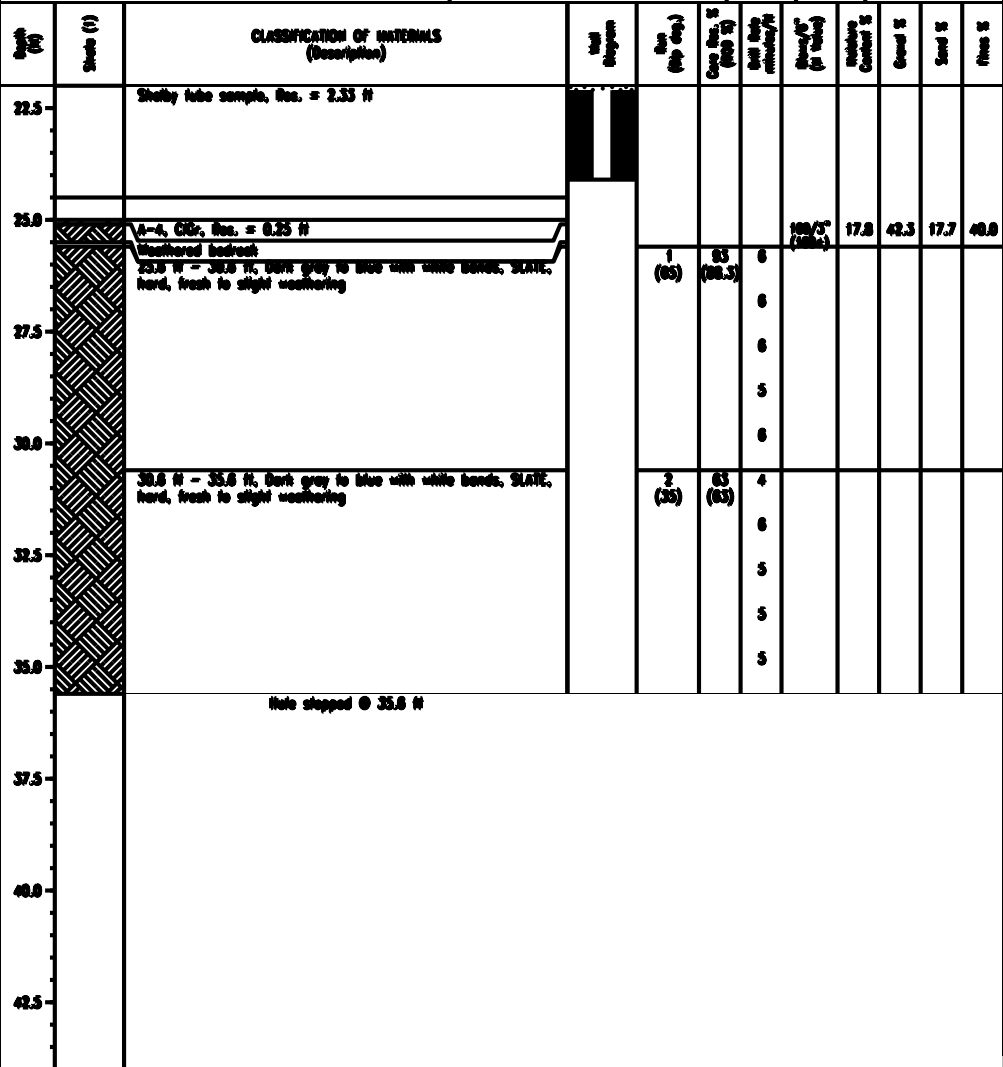
Checked By: ASP

Boring Crew: ME Boring/Bar  
Date Started: 6/03/14 Date Finished: 6/04/14  
VSPG INFO: N 798752.20 H E 1477834.00 H  
Station: 2002+79.50 Offset: 00.33HT  
Ground Elevation: 334.0 H

Coring Sampler  
Type: WASH BORE SS  
I.D.: 4.25 in 2 in  
Hammer Mt: N.A. 140 lb.  
Hammer Fall: N.A. 30 in.  
Hammer/Rod Type: Safety  
Rig: Mobile - 50 CE = 1.33

Groundwater Observations

Date	Depth (ft)	Notes
06/03/14	0.0	AB
06/04/14	1.5	AB



Notes: 1. Stratification does not represent geotechnical boundary between material types. Weather may be present.  
2. If there is a change in material type, the material type is indicated by the symbol in the column to the right of the description.  
3. The top of the boring log may not be at the same level as the ground surface.  
4. The top of the boring log may not be at the same level as the ground surface.  
5. The top of the boring log may not be at the same level as the ground surface.  
6. The top of the boring log may not be at the same level as the ground surface.

