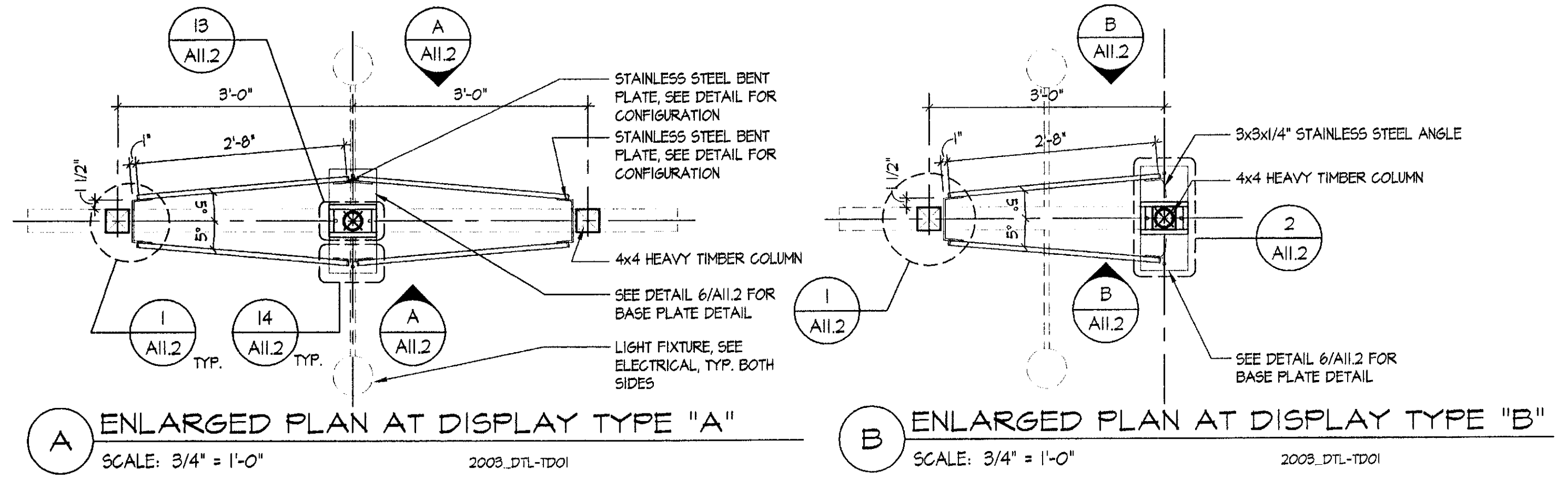
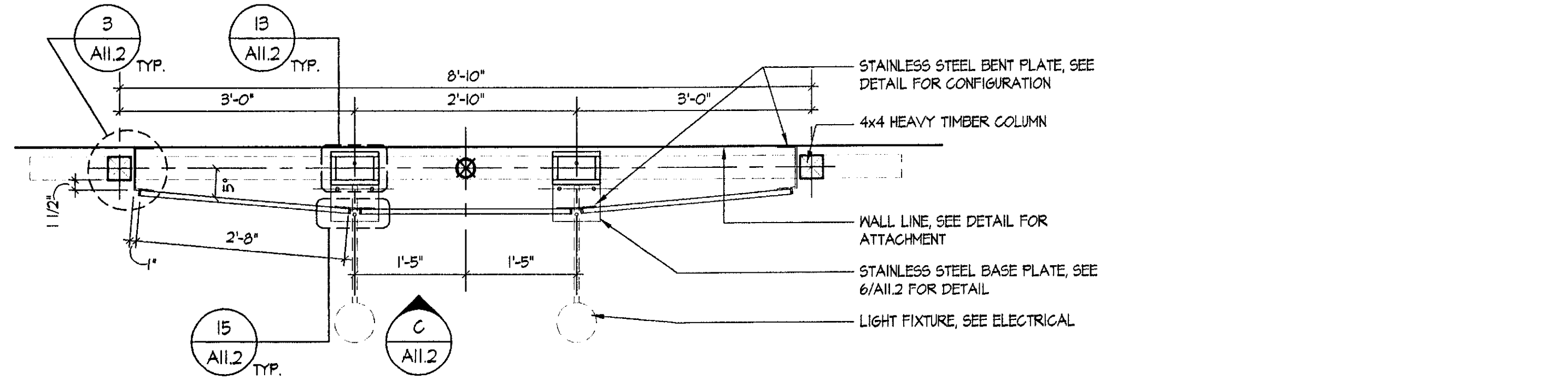


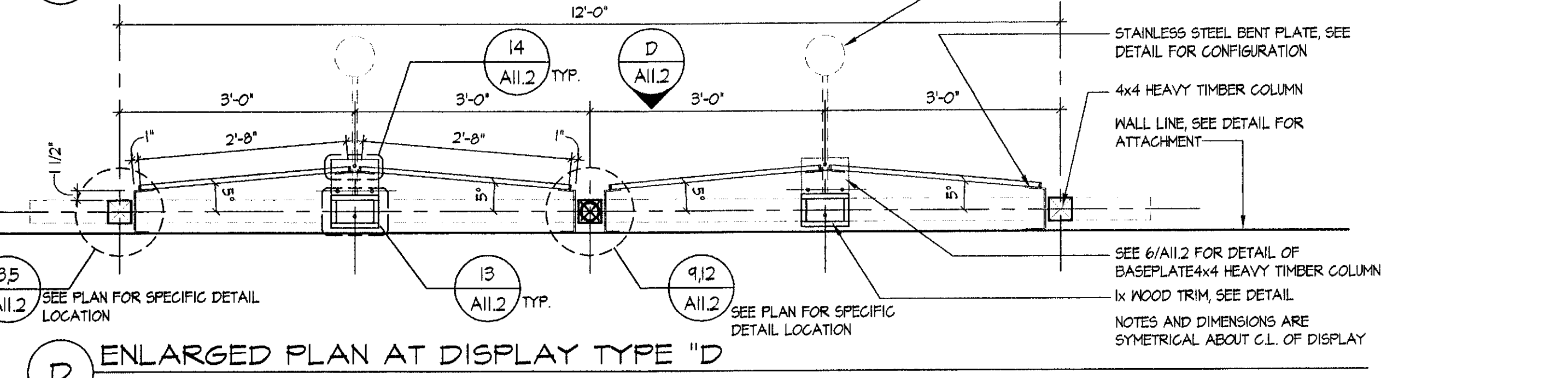
**PARTIAL DISPLAY PLAN - EXHIBIT #101 AREA LAYOUT**  
 SCALE: 1/4" = 1'-0"  
 2003\_FPO1



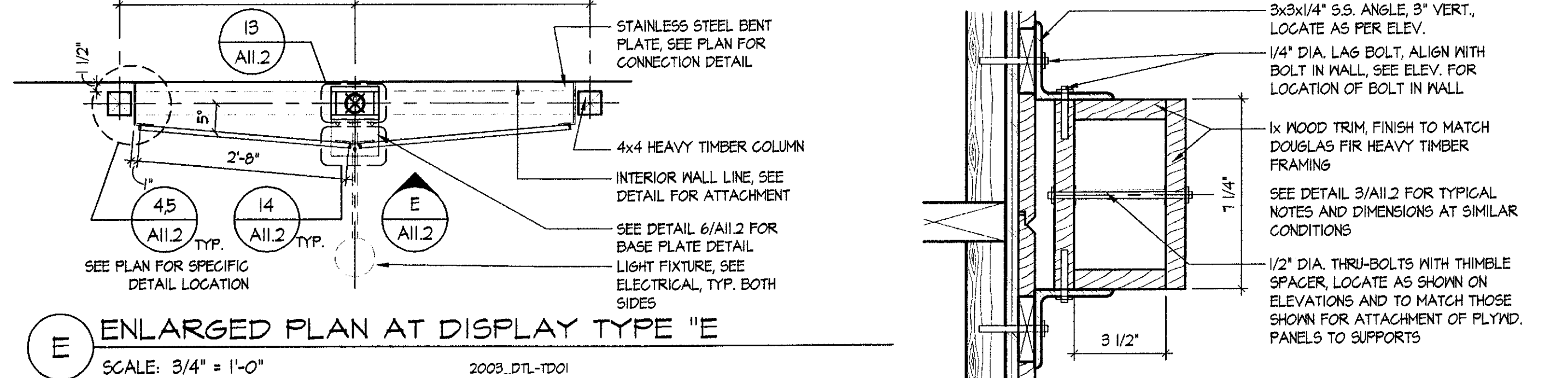
**A ENLARGED PLAN AT DISPLAY TYPE "A"** SCALE: 3/4" = 1'-0"  
 2003\_DTL-TD01  
**B ENLARGED PLAN AT DISPLAY TYPE "B"** SCALE: 3/4" = 1'-0"  
 2003\_DTL-TD01



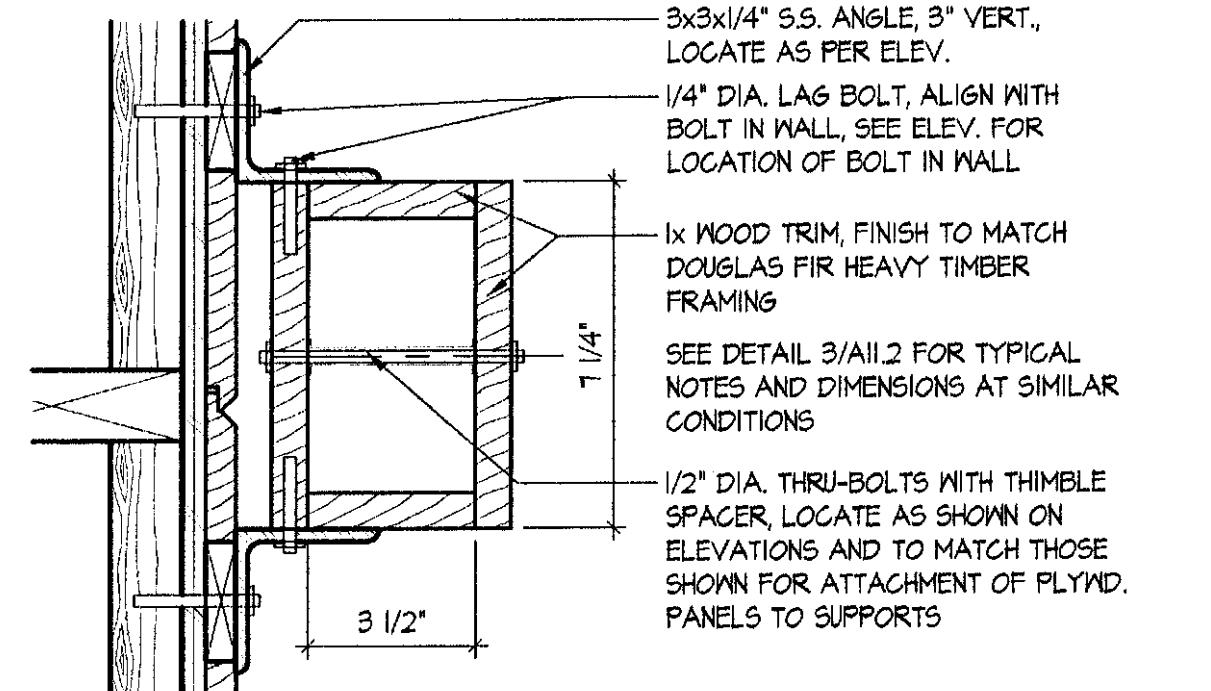
**C ENLARGED PLAN AT DISPLAY TYPE "C"** SCALE: 3/4" = 1'-0"  
 2003\_DTL-TD01  
**D ENLARGED PLAN AT DISPLAY TYPE "D"** SCALE: 3/4" = 1'-0"  
 2003\_DTL-TD01



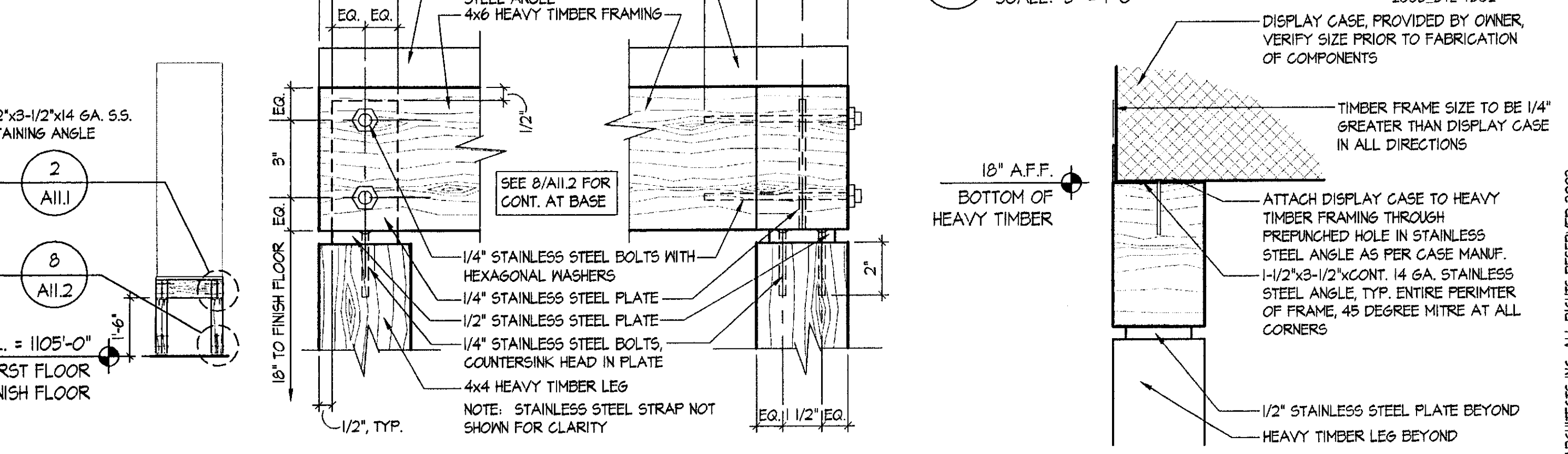
**E ENLARGED PLAN AT DISPLAY TYPE "E"** SCALE: 3/4" = 1'-0"  
 2003\_DTL-TD01  
**D ENLARGED PLAN AT DISPLAY TYPE "D"** SCALE: 3/4" = 1'-0"  
 2003\_DTL-TD01



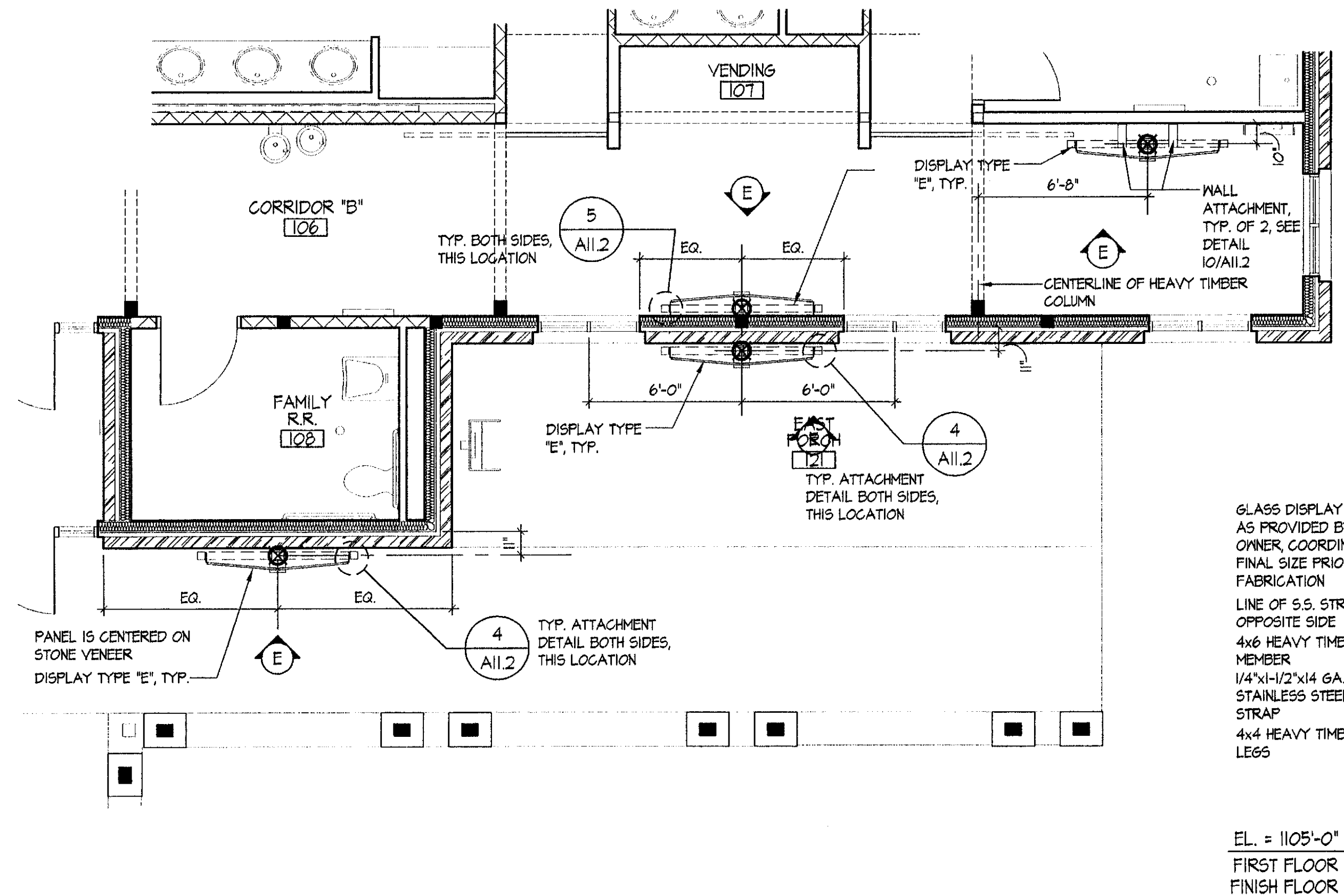
**E ENLARGED PLAN AT DISPLAY TYPE "E"** SCALE: 3/4" = 1'-0"  
 2003\_DTL-TD01  
**D ENLARGED PLAN AT DISPLAY TYPE "D"** SCALE: 3/4" = 1'-0"  
 2003\_DTL-TD01



**4 DISPLAY/WALL CONNECTION** SCALE: 3" = 1'-0"  
 2003\_DTL-TD02

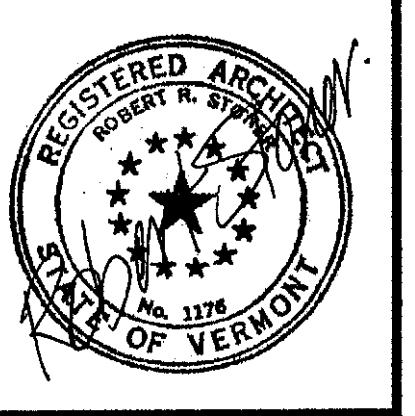
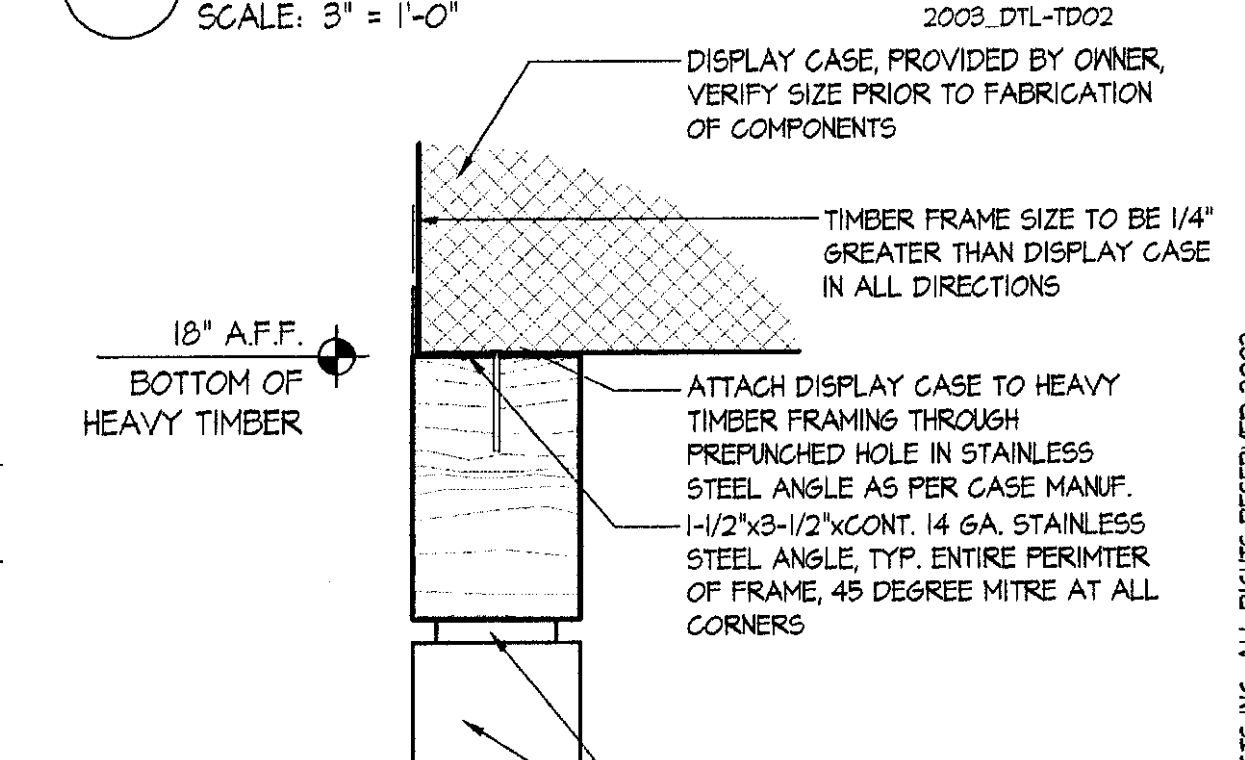
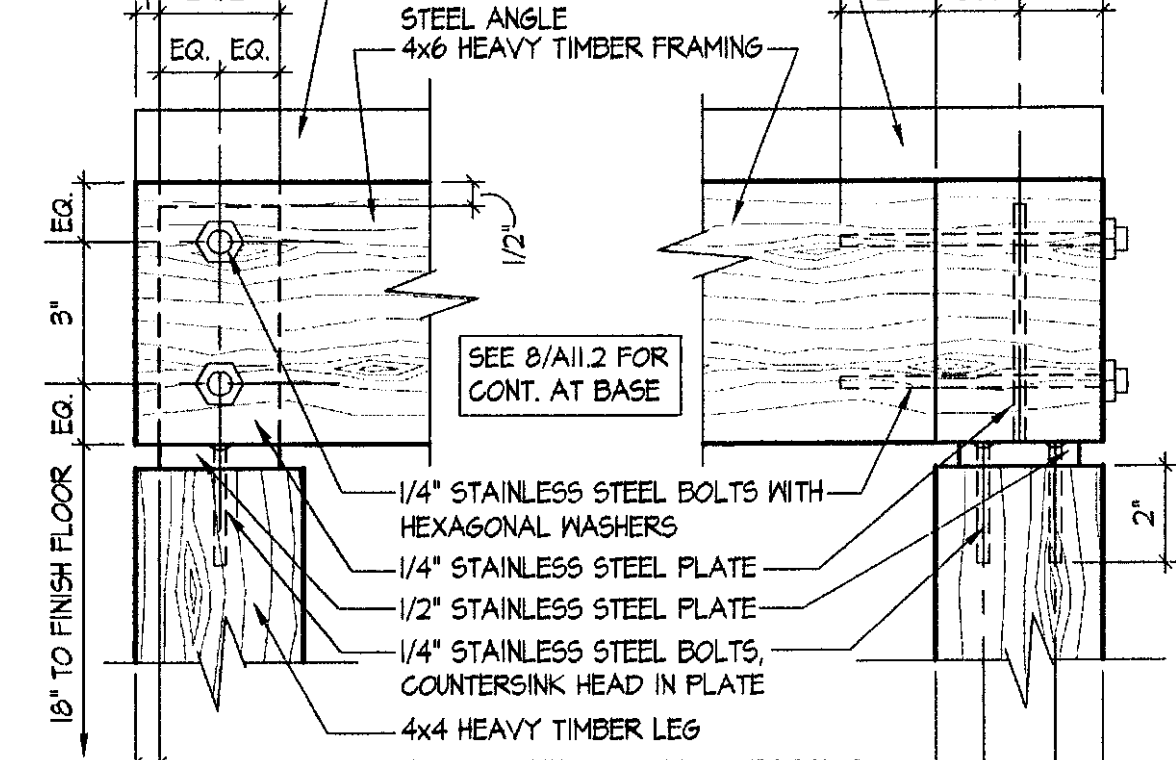
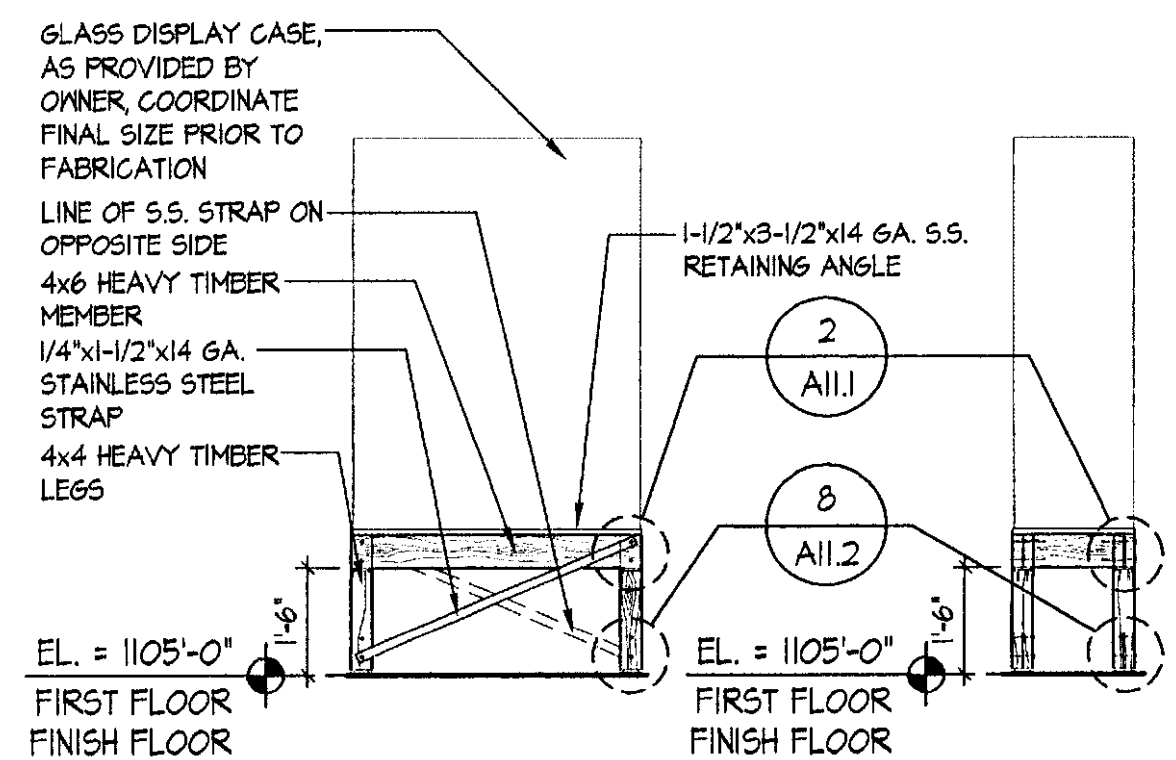


**1 TYP. DISPLAY CASE ELEVATIONS** SCALE: 3/8" = 1'-0"  
 2003\_ELEV-TD01  
**2 DISPLAY CASE BASE DETAIL** SCALE: 3" = 1'-0"  
 2003\_DTL-TD02  
**3 DISPLAY CASE BASE DETAIL** SCALE: 3" = 1'-0"  
 2003\_DTL-TD02



**PARTIAL DISPLAY PLAN - "24 HOUR AREA" LAYOUT**  
 SCALE: 1/4" = 1'-0"  
 2003\_FPO1

**PLAN NOTES:**  
 GENERAL DISPLAY CASE LAYOUT IS BASED ON A CASE SIZE OF 48" LONG x 20" DEEP x 66" HIGH. IF OWNER SUPPLIED CASE VARIES FROM THESE DIMENSIONS, CONTACT ARCHITECT TO REVISE LAYOUT AND DETAILS TO FIT SIZE SUPPLIED.  
 1. ATTACH 3/4" A/B DOUGLAS FIR PLYWOOD TO DISPLAY CASE ON SIDE SHOWN. PLYWOOD TO BE SIZED TO COVER ENTIRE SIDE OF CASE WITH ONE SHEET. COORDINATE WITH OWNER SUPPLIED DISPLAY CASE.  
 2. FLASHA SCREEN TV, PROVIDED BY OWNER, INSTALLED BY CONTRACTOR. SEE INTERIOR ELEVATIONS FOR MOUNTING HEIGHT.  
 3. ADIRONDACK DOUBLE BENCH, AS SUPPLIED BY THE OWNER, SECURE TO FLOOR W/ MANUF. STANDARD FLOOR ANCHORS.



**NORTHERN ARCHITECTS**  
 207 KING STREET  
 SUITE 3  
 BURLINGTON, VERMONT  
 05401-4502  
 802-658-1953

CONSULTANTS  
 CIVIL  
 KREBS AND LANSING  
 10 Main Street  
 Colchester VT 05446  
 (802)-878-0375  
 LANDSCAPE ARCHITECT  
**OHKW**  
 7 Morris Ave.  
 Burlington VT 05401  
 (802)-864-0010  
 STRUCTURAL  
 RICHARD M. DOHERTY, P.E.  
 117 St. Paul Street  
 Burlington VT 05401  
 (802)-660-4212  
 PLUMBING, MECHANICAL,  
 AND ELECTRICAL  
 DUFRESNE AND HENRY  
 Precision Park  
 North Springfield VT 05150-0024  
 (802)-886-2261

REVISIONS

PROJECT  
**DERBY WELCOME CENTER**  
 PROJECT #101 091-3(8)

NEW FACILITY  
 DERBY VERMONT

DATE: 01/07/2002  
 SCALE: 1/4" = 1'-0"  
 CHECKED: HS  
 PROJECT NO: 2003

FLOOR PLAN - TOURS AND DETOURS DISPLAYS

**A11.1**

© NORTHERN ARCHITECTS INC. ALL RIGHTS RESERVED 2002