

NORTHERN ARCHITECTS

207 KING STREET
SUITE 3
BURLINGTON, VERMONT
05401-4502
802-658-1953

CONSULTANTS
CIVIL
KREBS AND LANSING
10 Main Street
Colchester VT 05446
(802)-878-0975

LANDSCAPE ARCHITECT OHKW

7 Marble Ave.
Burlington VT 05401
(802)-864-0010
STRUCTURAL
RICHARD M. DOHERTY, P.E.
117 St. Paul Street
Burlington VT 05401
(802)-860-4212
PLUMBING, MECHANICAL,
AND ELECTRICAL
DUFFRESNE AND HENRY
Precision Park
North Springfield VT 05150-0024
(802)-886-2261

REVISIONS

NO.	DESCRIPTION

PROJECT

DERBY WELCOME CENTER
PROJECT #1M 091-3(8)

NEW FACILITY

DERBY VERMONT

DATE: 01/01/2002

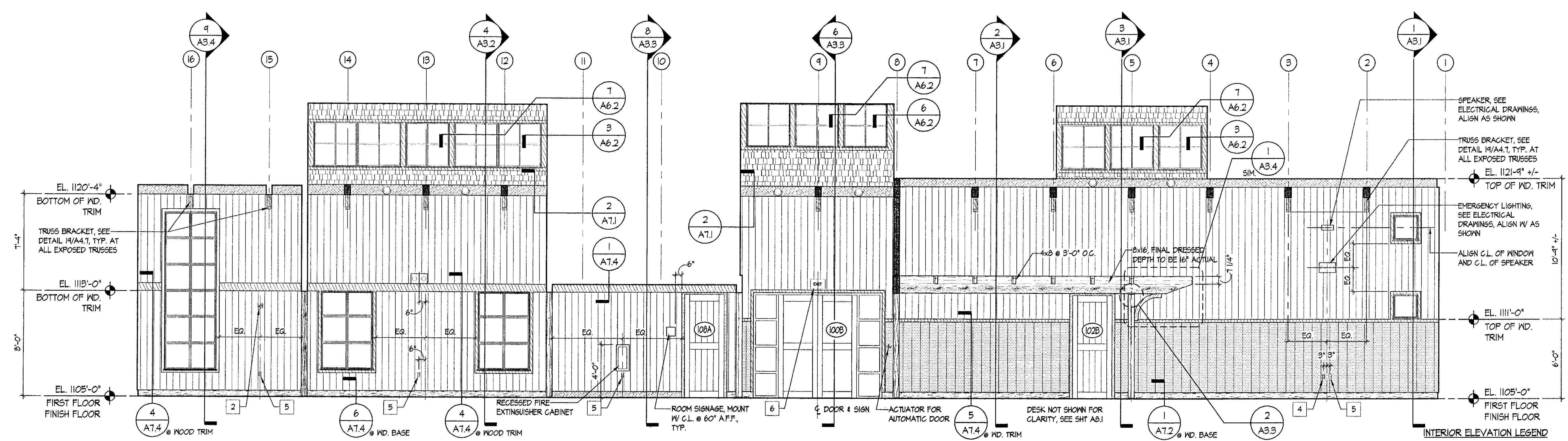
SCALE: AS NOTED

CHECKED: HS

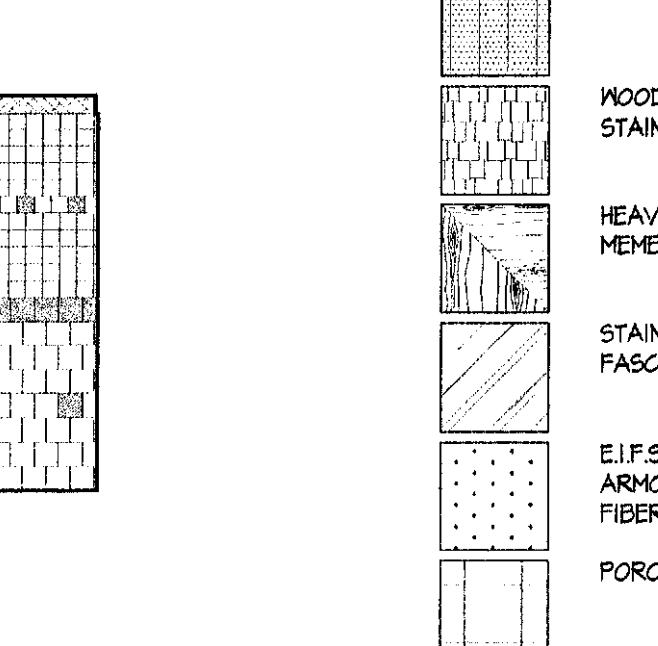
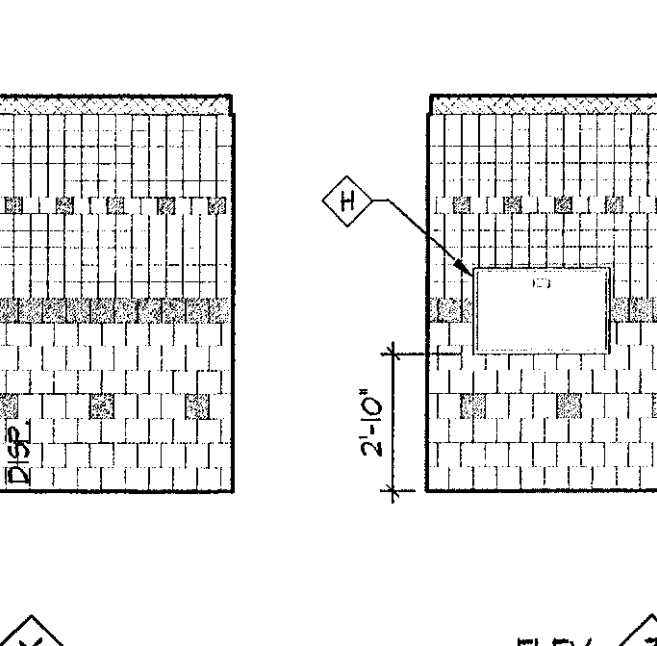
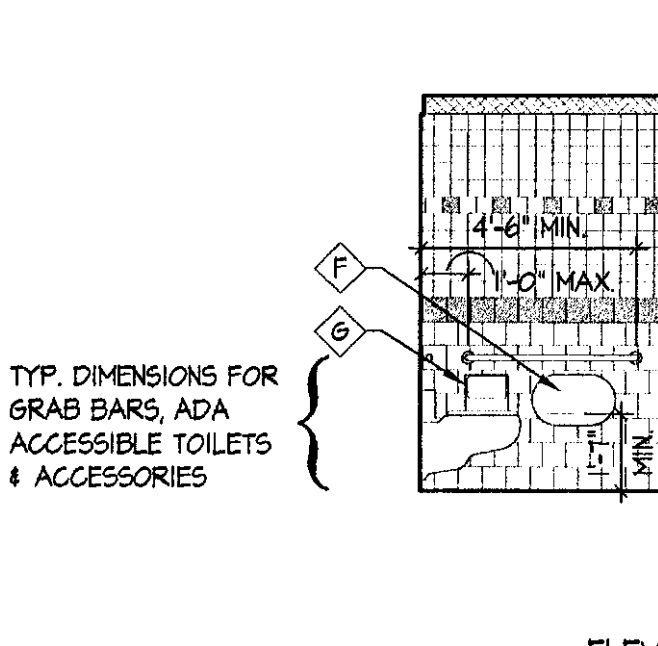
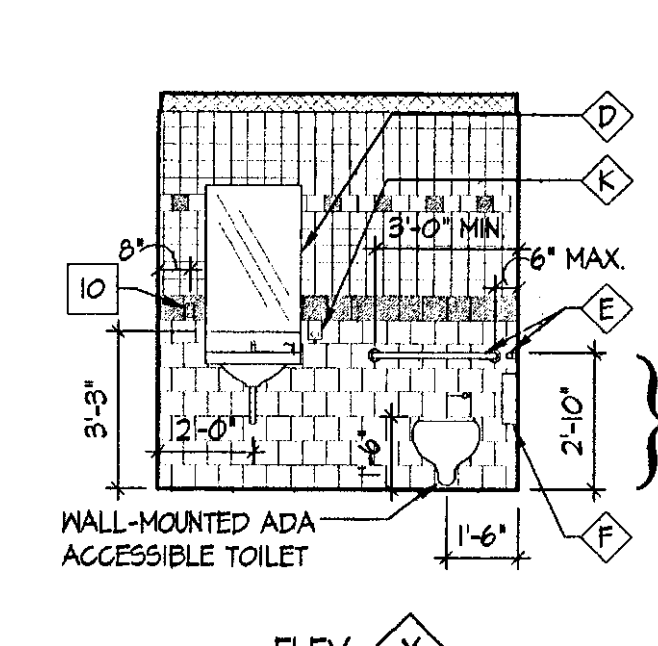
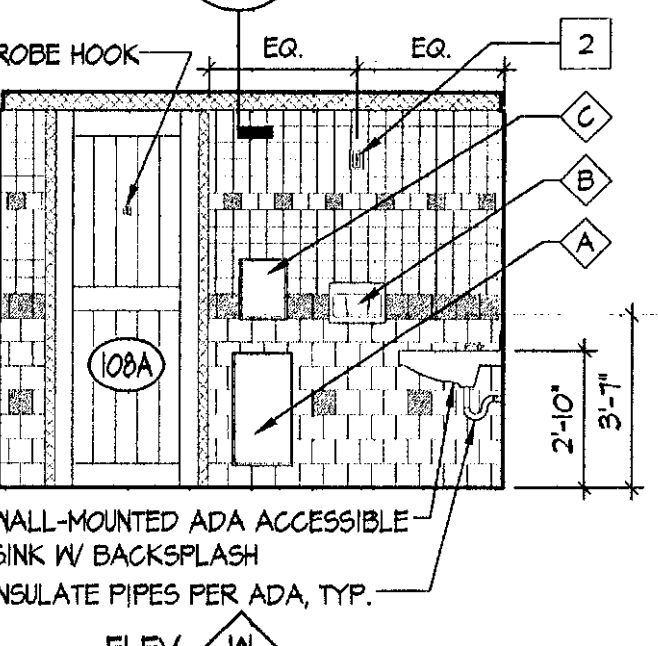
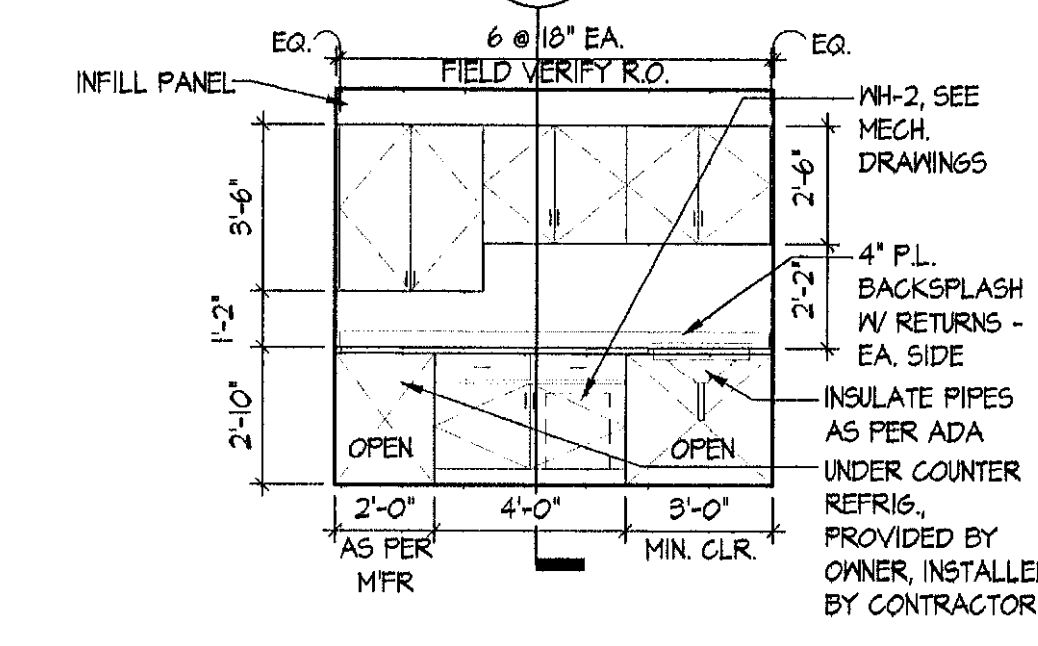
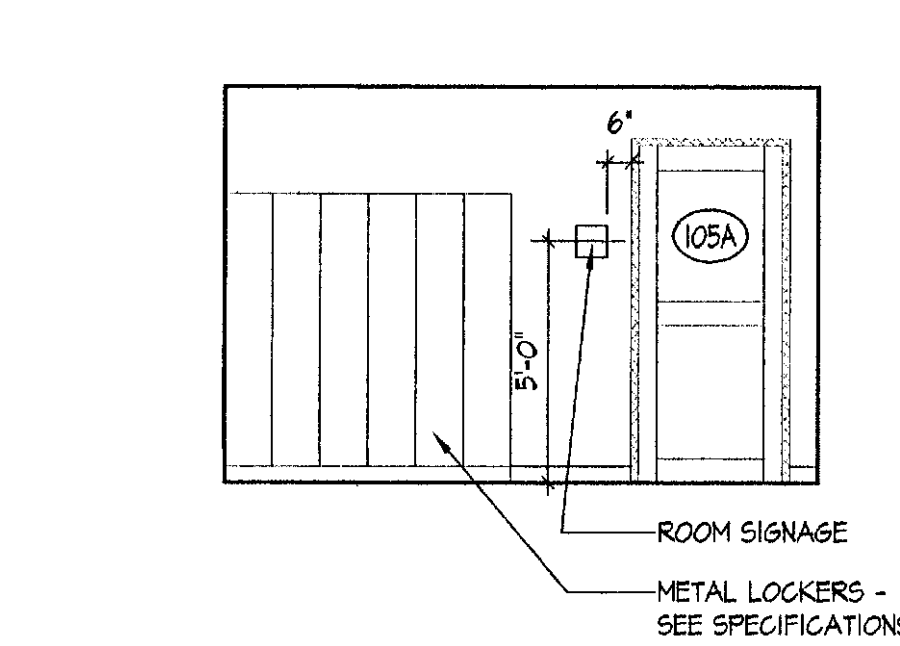
PROJECT NO: 2003

INTERIOR ELEVATIONS PUBLIC AREAS AND RESTROOMS

A7.3



INT. ELEV. AT CORRIDOR "B" #106/CORRIDOR "D" #112
SCALE: 1/4" = 1'-0" 2003_ELEV-INT01

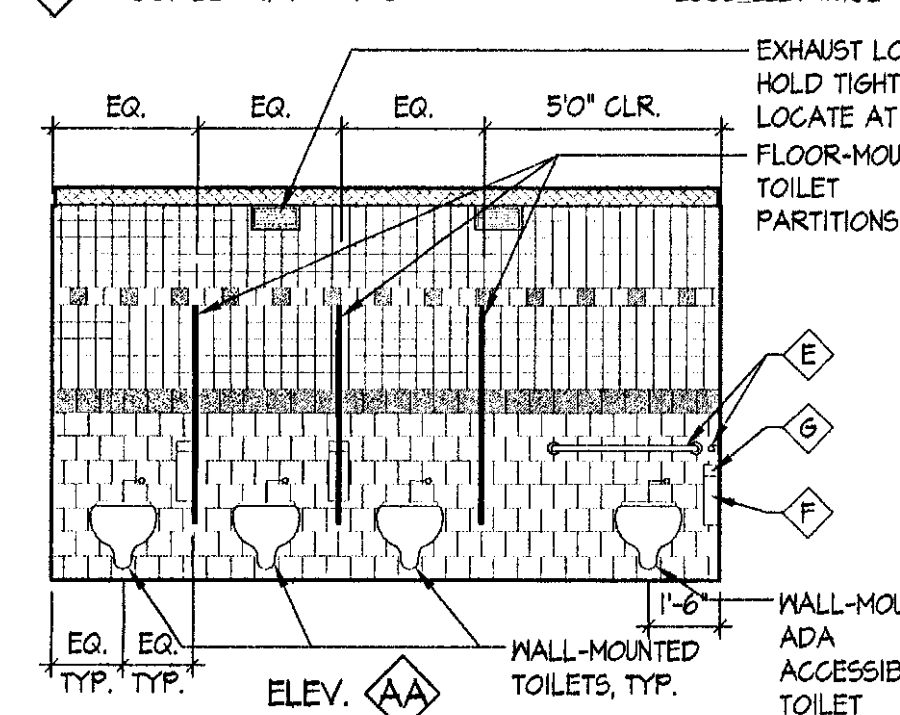


INTERIOR ELEVATION LEGEND

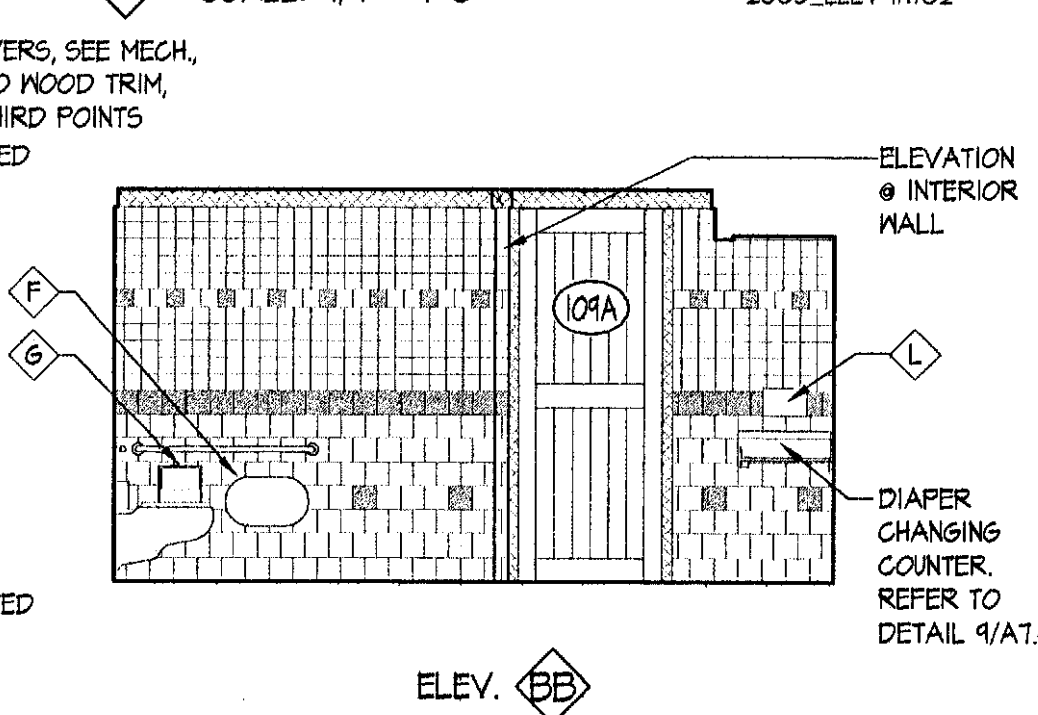
- VERT. WOOD SIDING, TRANSPARENT STAIN
- VERTICAL WD. PANELING
- WOOD SHINGLES, TRANSPARENT STAIN
- HEAVY TIMBER STRUCTURAL MEMBERS
- STAINLESS STEEL METAL FASCIA
- E.L.F.S. FINISH SYSTEM W/ ARMOR MAT OVER FIBERGLASS SHEATHING
- PORCELAIN TILE
- 1/4" SOLID SURFACING SHEETS
- JOINT
- WOOD BASE TO MATCH WOOD FLOORING
- WOOD TRIM TO BE PAINTED
- WOOD TRIM TO RECEIVE TRANSPARENT STAIN
- 6x6 C.T. BASE, COLOR 3
- WALL SCONCE, ORIENT AS INDICATED, SEE REFLECTED CEILING PLAN AND ELECTRICAL DRAWINGS.

NOTE: SEE EXTERIOR ELEVATIONS FOR WINDOWS ON EXT. OF BUILDING

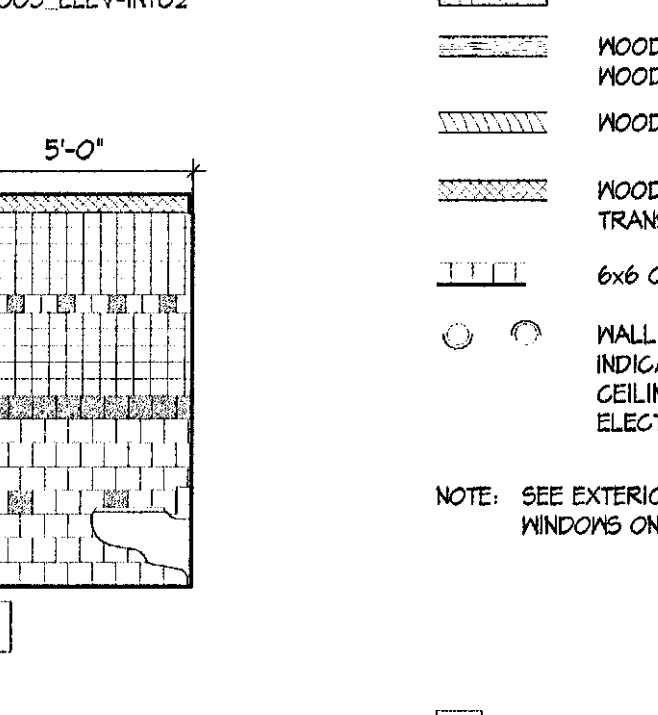
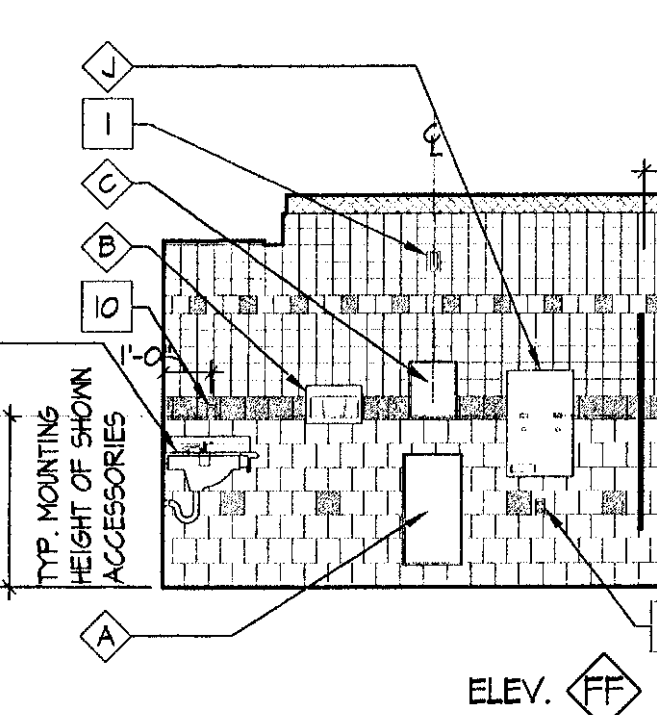
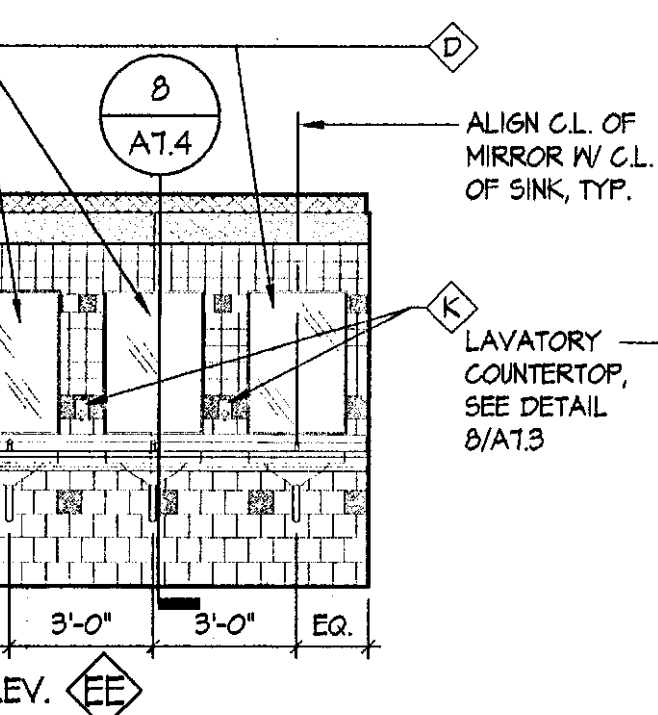
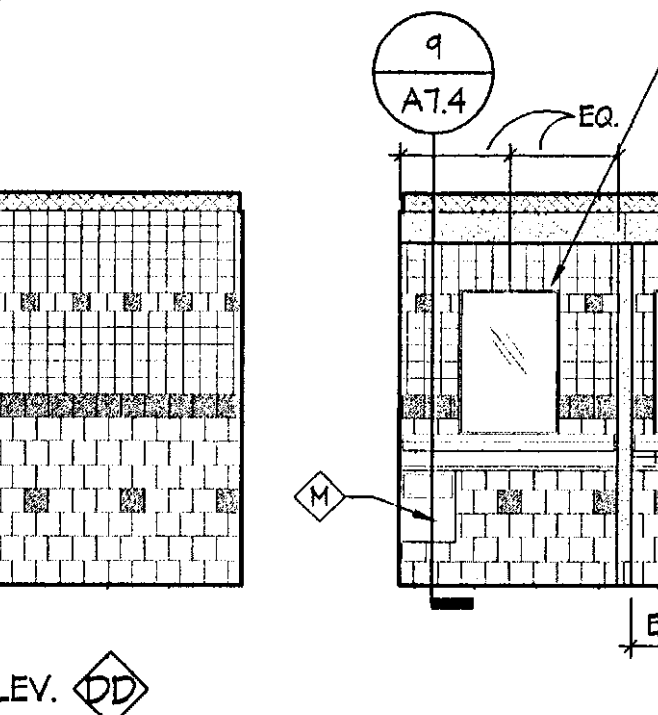
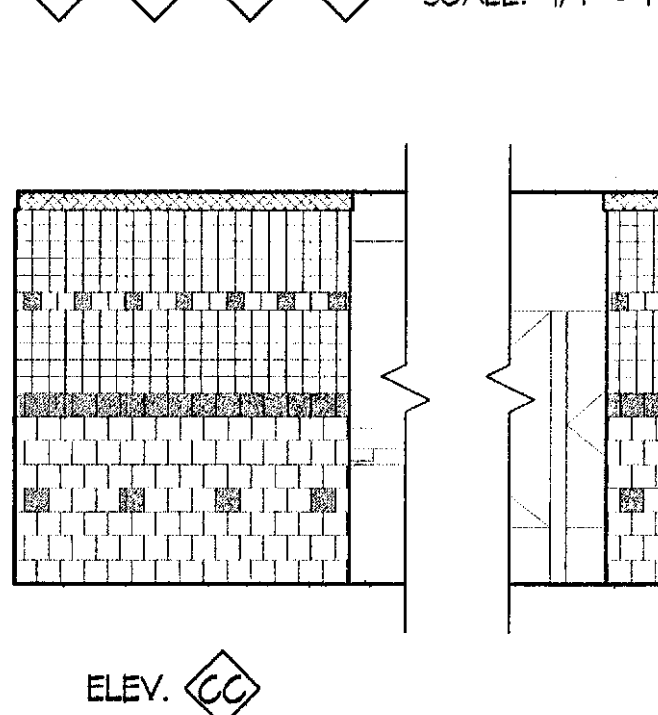
INTERIOR ELEV. AT CORR. 'A' #102
SCALE: 1/4" = 1'-0" 2003_ELEV-INT02



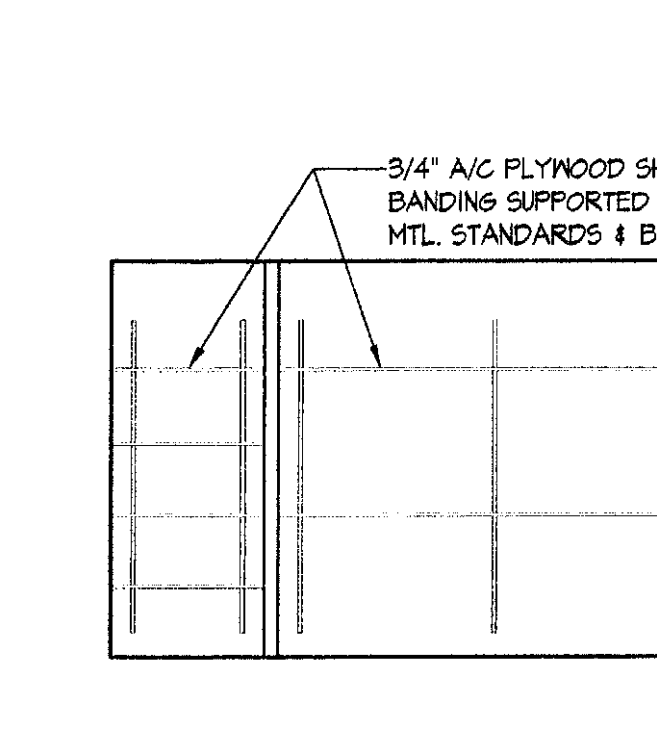
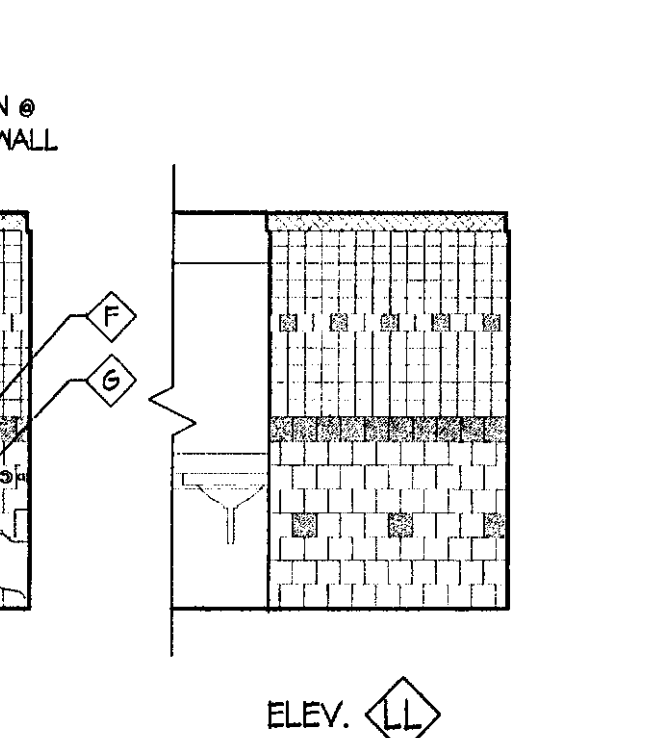
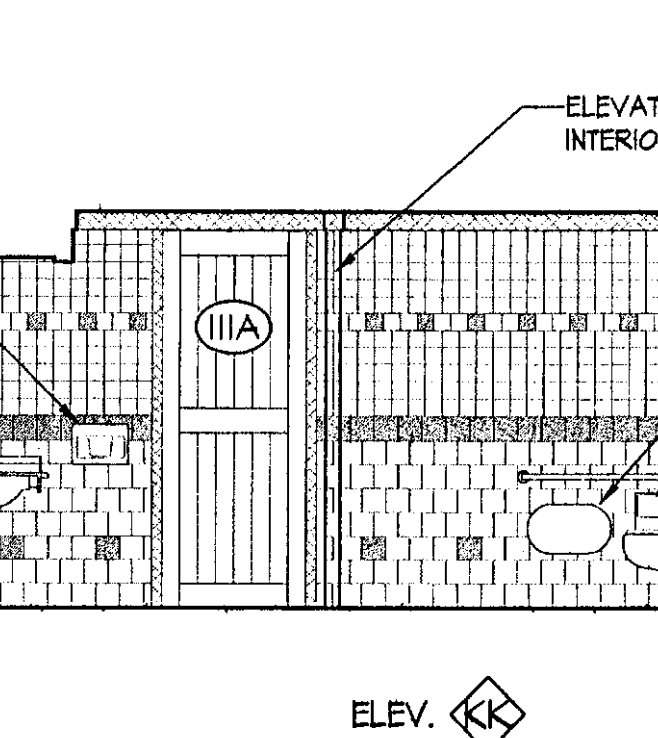
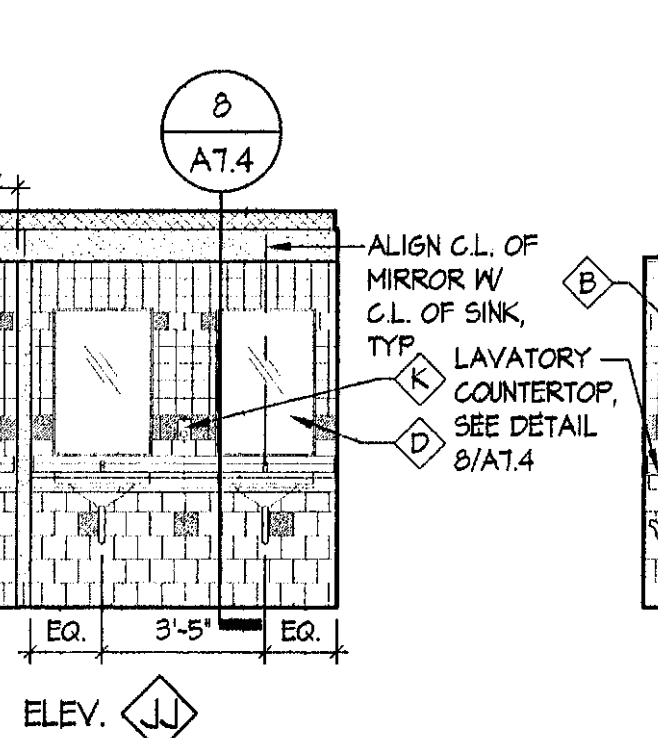
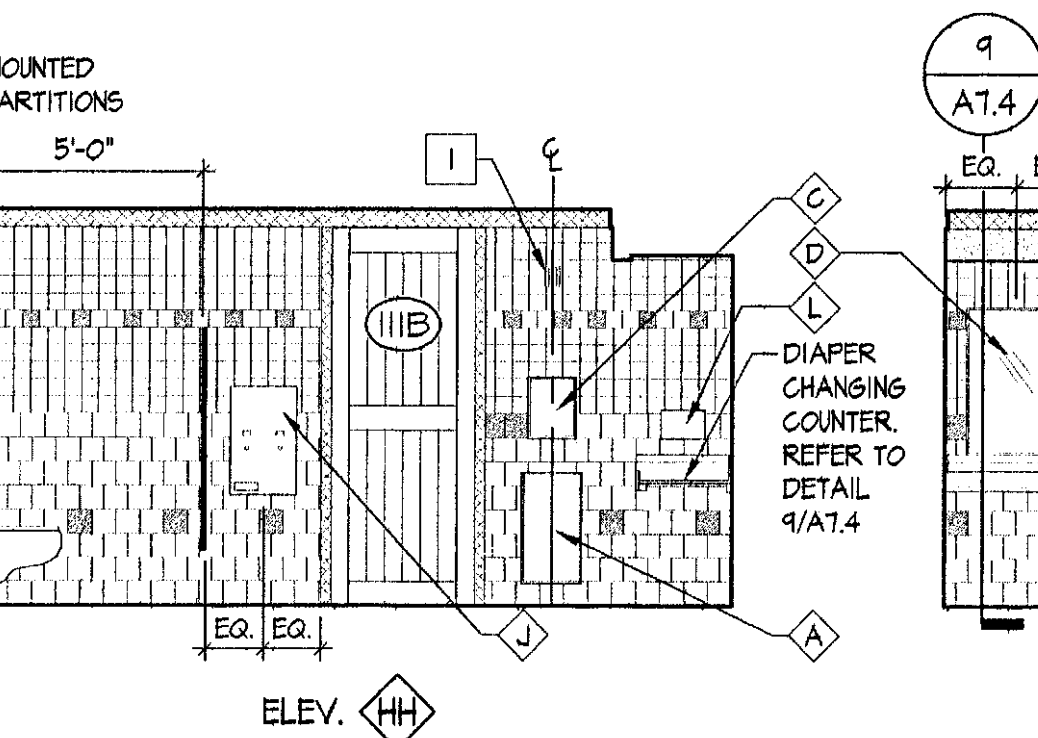
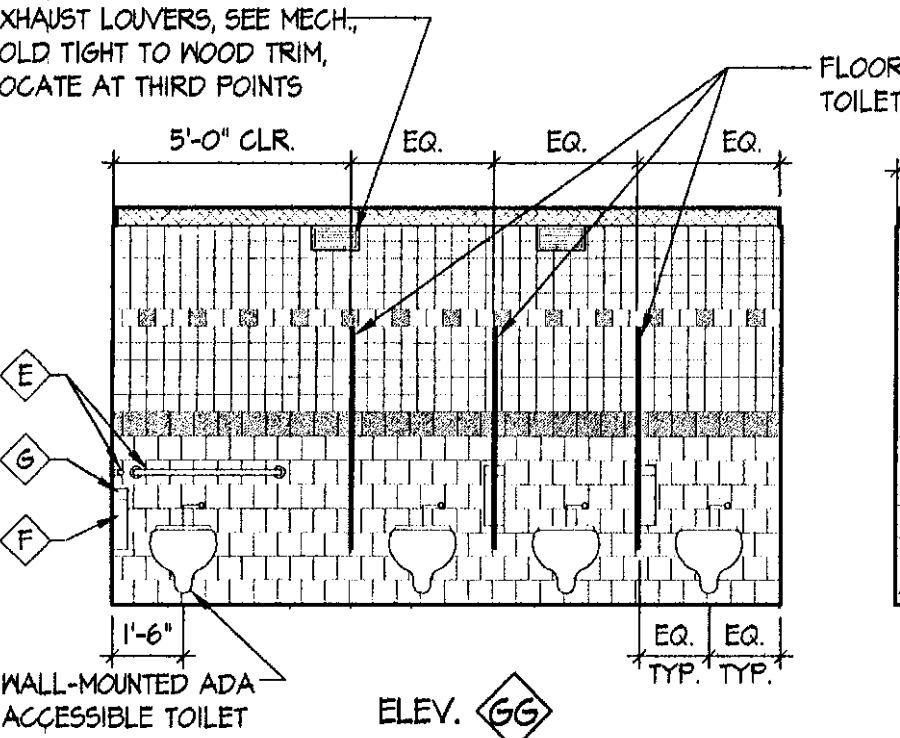
INTERIOR ELEVATION AT STAFF #105
SCALE: 1/4" = 1'-0" 2003_ELEV-INT02



INTERIOR ELEVATIONS AT FAMILY REST ROOM #108
SCALE: 1/4" = 1'-0" 2003_ELEV-INT02



INTERIOR ELEVATIONS AT WOMEN'S REST ROOM #109
SCALE: 1/4" = 1'-0" 2003_ELEV-INT02



INTERIOR ELEVATION AT FLEX #111
SCALE: 1/4" = 1'-0" 2003_ELEV-INT02



INTERIOR ELEVATION AT JANITOR #114
SCALE: 1/4" = 1'-0" 2003_ELEV-INT02



- 1 FIRE ALARM VISUAL SIGNAL PER ELEC. DWGS. MOUNT SO BOTTOM OF STROBE LIGHT IS 6'-8" AFF IN LOCATION SHOWN.
- 2 FIRE ALARM COMBINED AUDIBLE/VISUAL SIGNAL PER ELEC. DWGS. MOUNT SO BOTTOM OF STROBE LIGHT IS 6'-8" AFF IN LOCATION SHOWN.
- 3 SECURITY CAMERA PER ELEC. DRAWINGS.
- 4 TEL/DATA OUTLET PER ELEC. DRAWINGS. MOUNT AT 18" AFF AT LOCATION SHOWN.
- 5 DUPLEX CONVENIENCE OUTLET PER ELEC. DRAWINGS. MOUNT TYPICALLY AT 18" AFF AT LOCATION SHOWN, U.O.N.
- 6 WALL-MOUNTED EXIT SIGN PER ELEC. DRAWINGS. MOUNT WITH BOTTOM AT 8'-4" AFF
- 7 FIRE ALARM MANUAL PULL STATION PER ELEC. DRAWINGS
- 8 ELECTRONIC COUNTER PER ELEC. DRAWINGS
- 9 ELECTRONIC COUNTER REFLECTOR PER ELEC. DRAWINGS
- 10 6FCI OUTLET PER ELEC. DRAWINGS. MOUNT AT 42" AFF AT LOCATION SHOWN.

NOTE: SEE SHEET A7.4 FOR TOILET ACCESSORIES LEGEND AND CERAMIC TILE LAYOUT

© NORTHERN ARCHITECTS INC. ALL RIGHTS RESERVED 2003