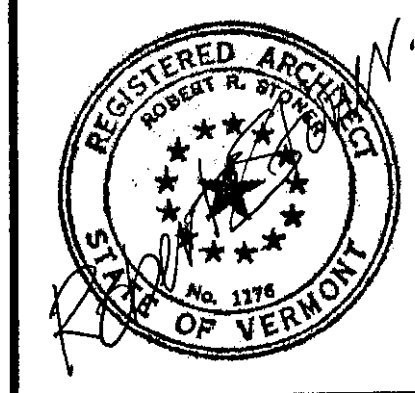
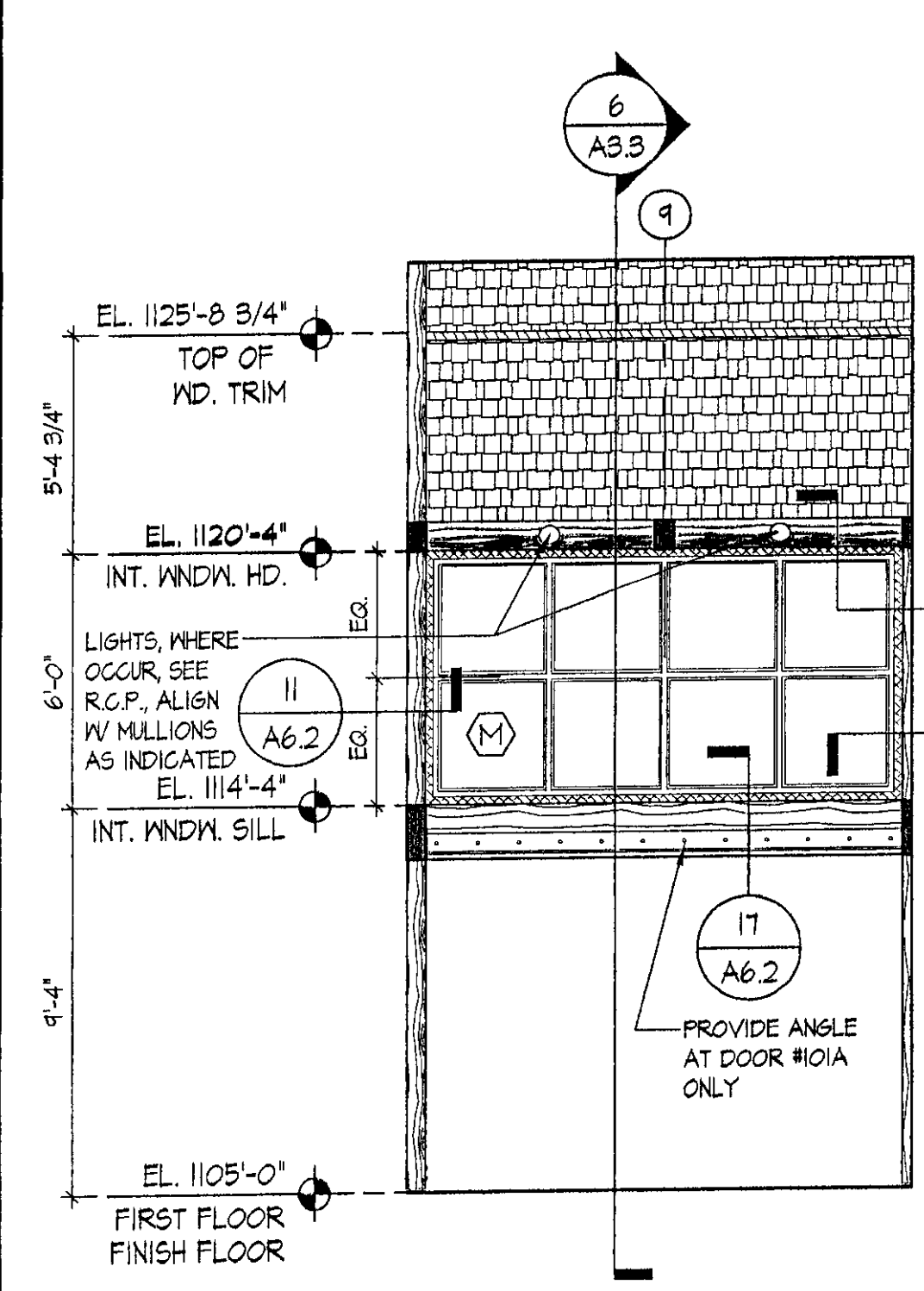


NOTE: SEE SHEET A7.1 FOR INTERIOR ELEVATION LEGEND

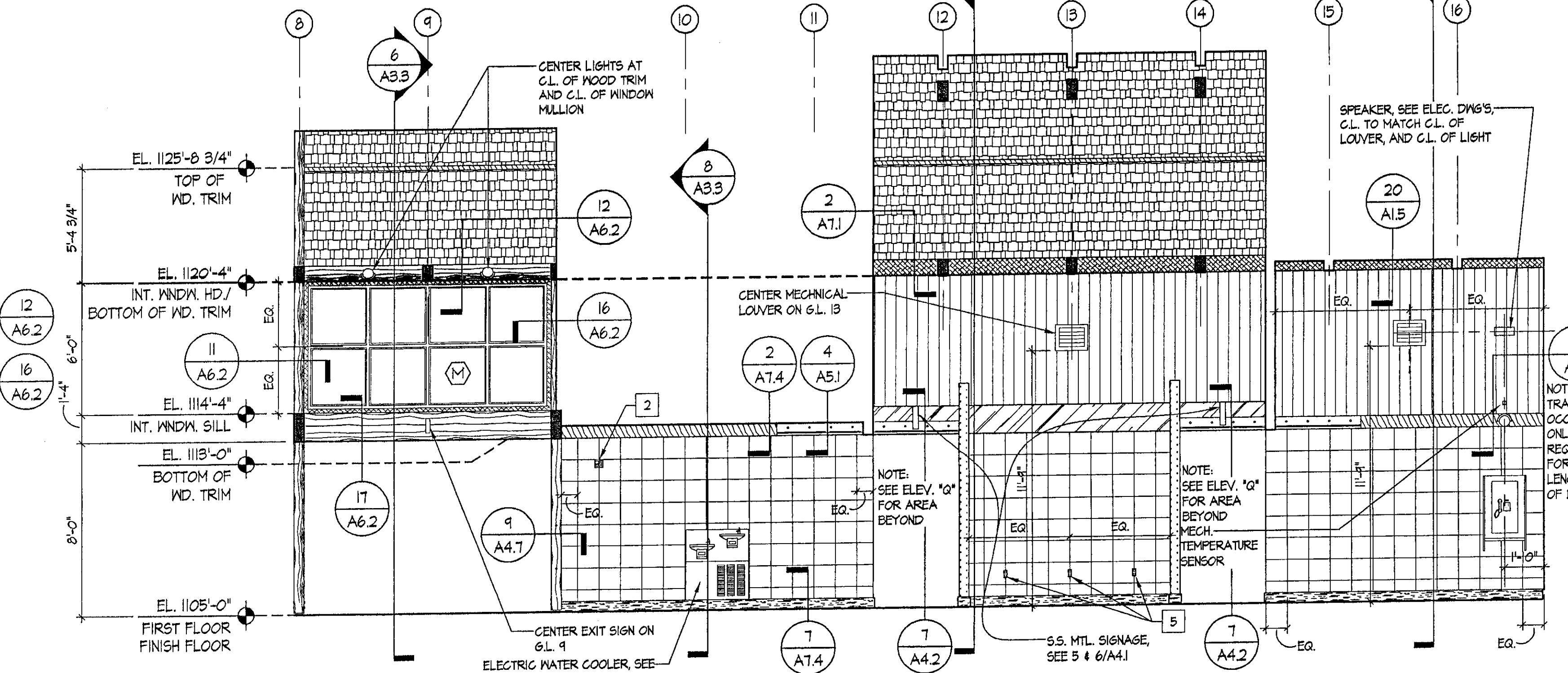


NORTHERN ARCHITECTS
 207 KING STREET
 SUITE 3
 BURLINGTON, VERMONT
 05401-4502
 802-688-1953

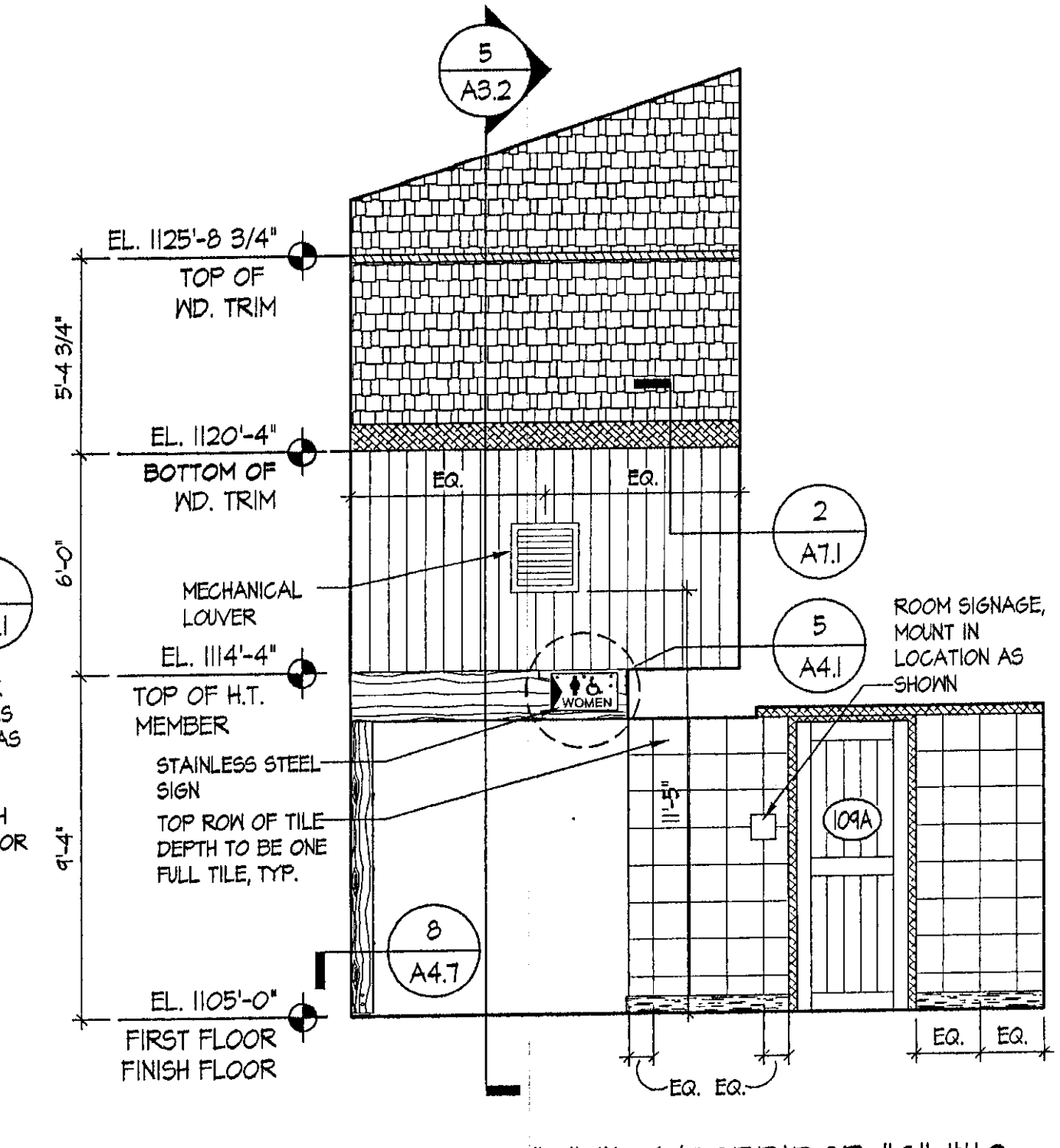
CONSULTANTS
 CIVIL
 KREBS AND LANGING
 10 Main Street
 Colchester VT 05446
 (802)-878-0875
 LANDSCAPE ARCHITECT
OHKW
 7 Marble Ave.
 Burlington VT 05401
 (802)-864-0010
 STRUCTURAL
 RICHARD M. DOHERTY, P.E.
 111 St. Paul Street
 Burlington VT 05401
 (802)-460-4212
 PLUMBING, MECHANICAL
 AND ELECTRICAL
 DUFRESNE AND HENRY
 Precision Park
 North Springfield VT 05150-0024
 (802)-886-2261



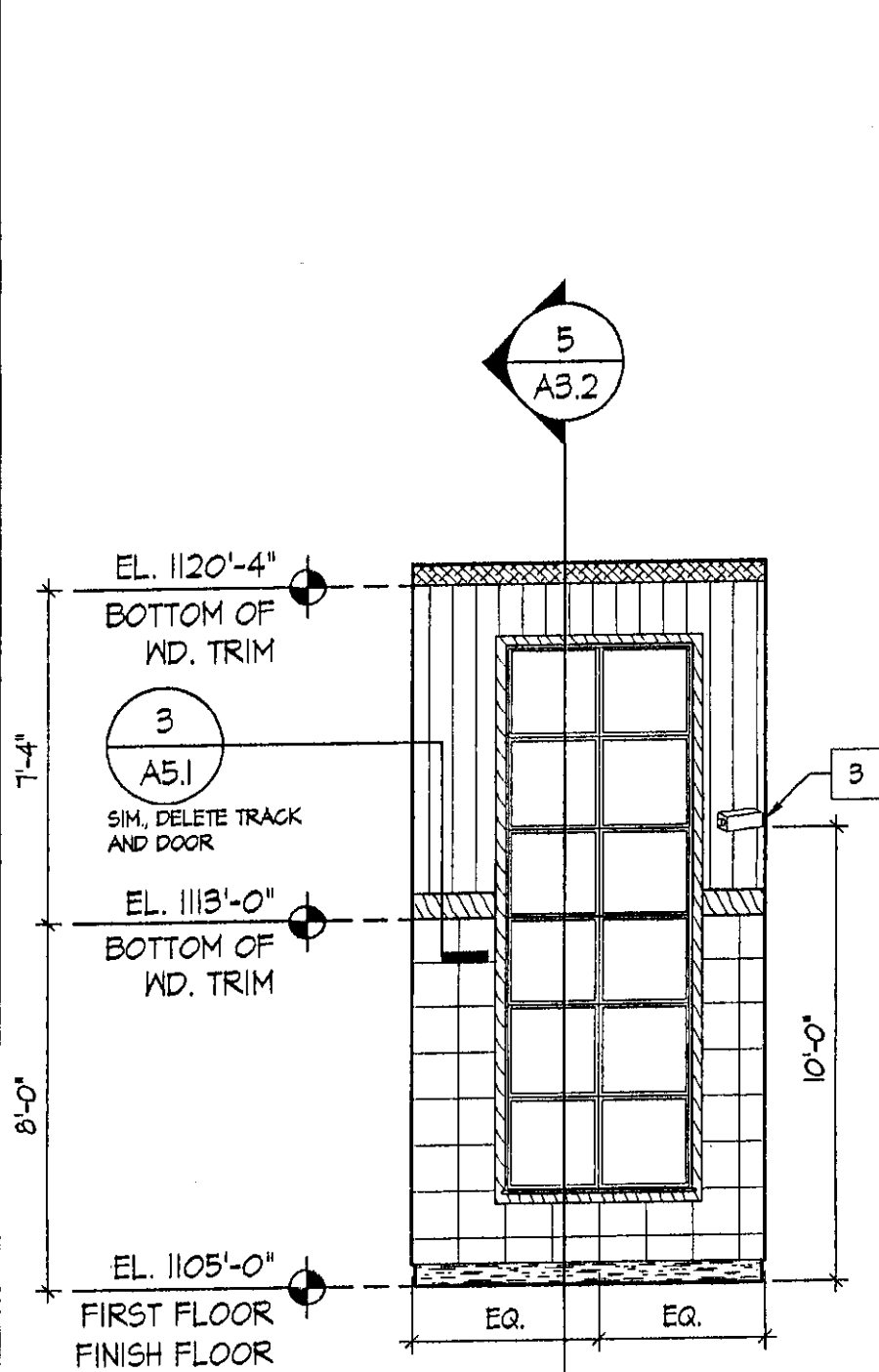
F INTERIOR ELEVATION AT EXHIBIT #101/CORRIDOR "B" #106
 SCALE: 1/4" = 1'-0"
 2009_ELEV-INT01



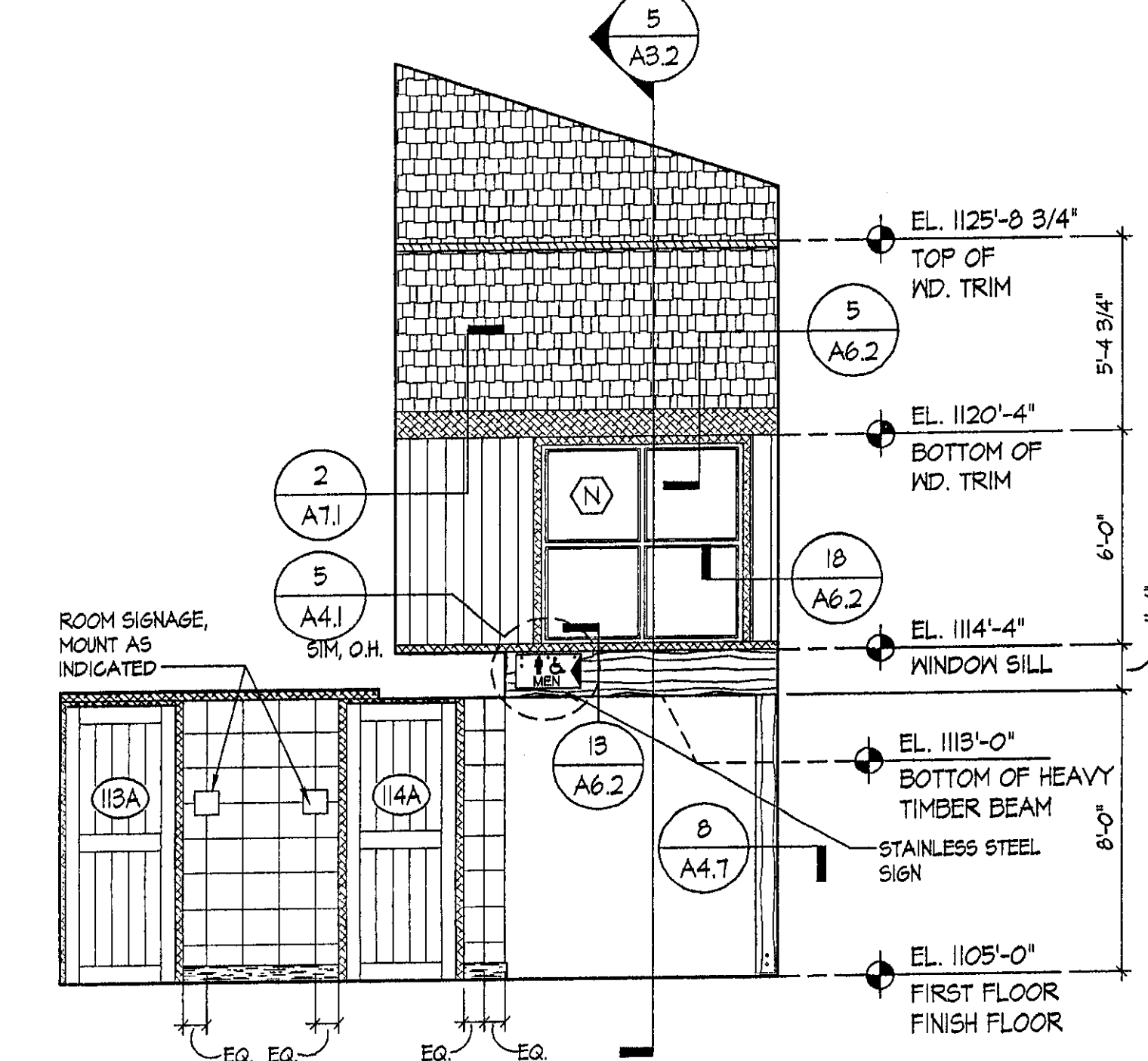
H INTERIOR ELEVATION AT EXHIBIT #101 / CORRIDOR "B" #106
 SCALE: 1/4" = 1'-0"
 2009_ELEV-INT01



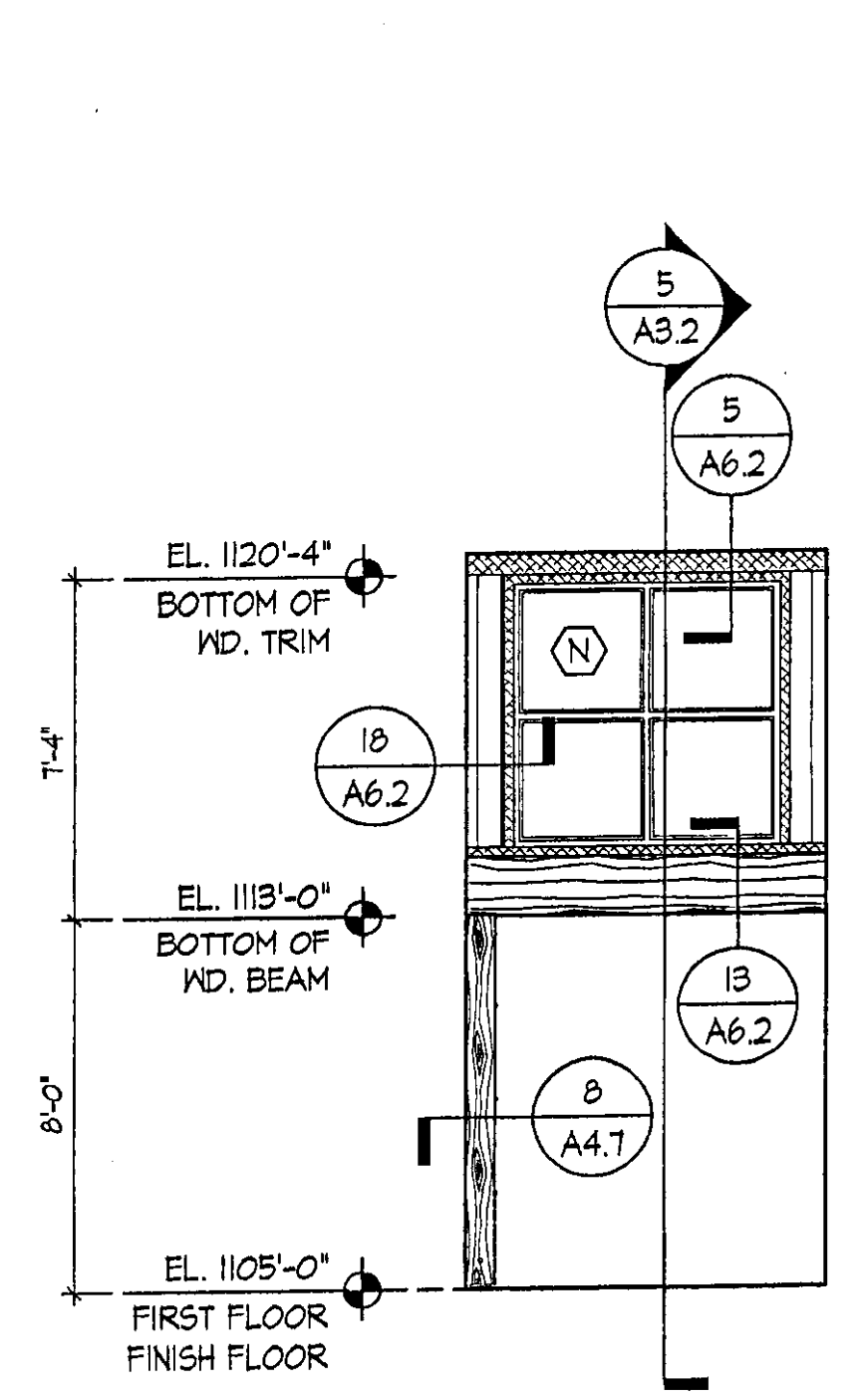
J INT. ELEV. AT CORRIDOR "B" #106/CORRIDOR "C" #110
 SCALE: 1/4" = 1'-0"
 2009_ELEV-INT01



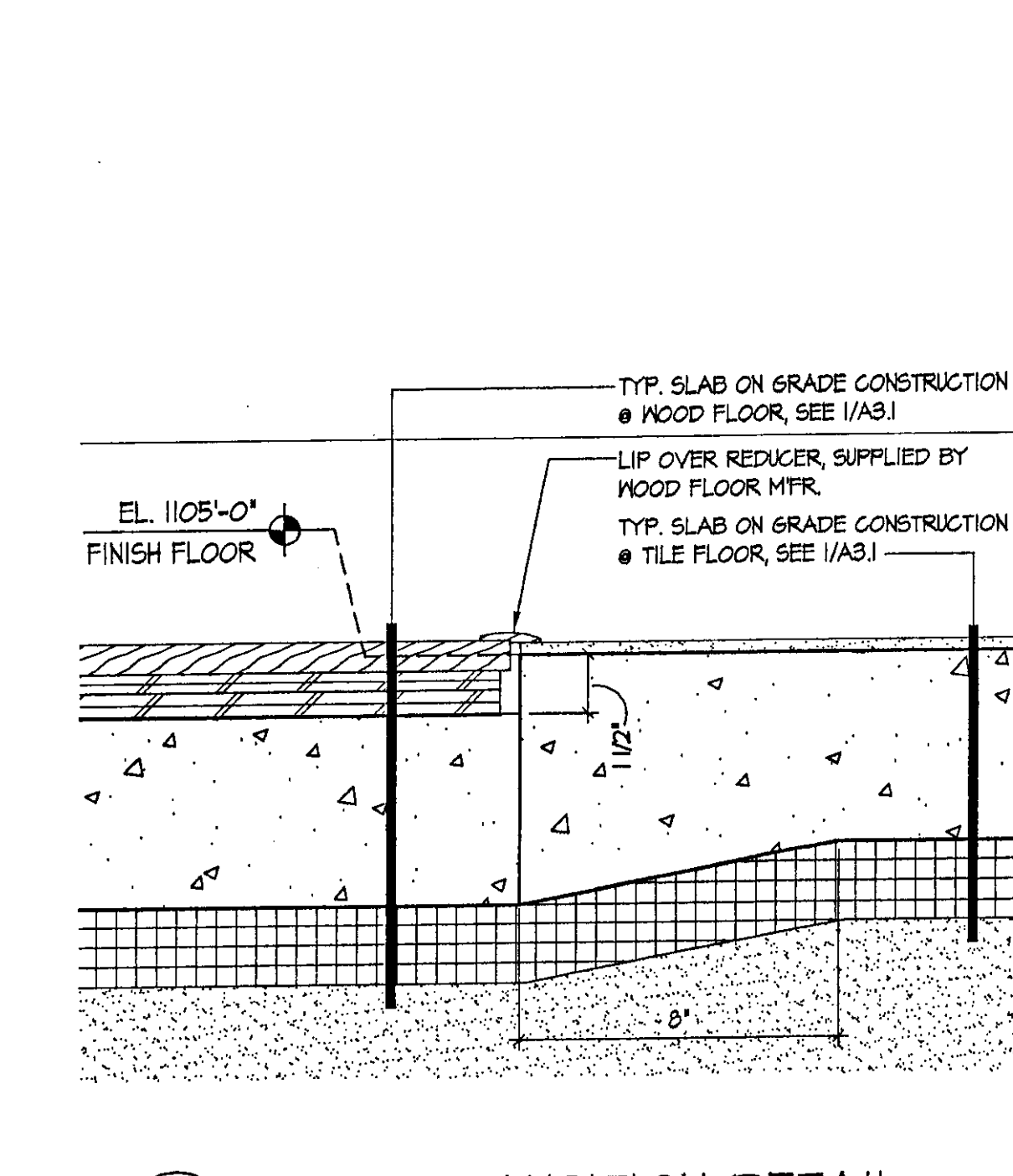
K INT. ELEV. AT CORRIDOR "B" #106
 SCALE: 1/4" = 1'-0"
 2009_ELEV-INT01



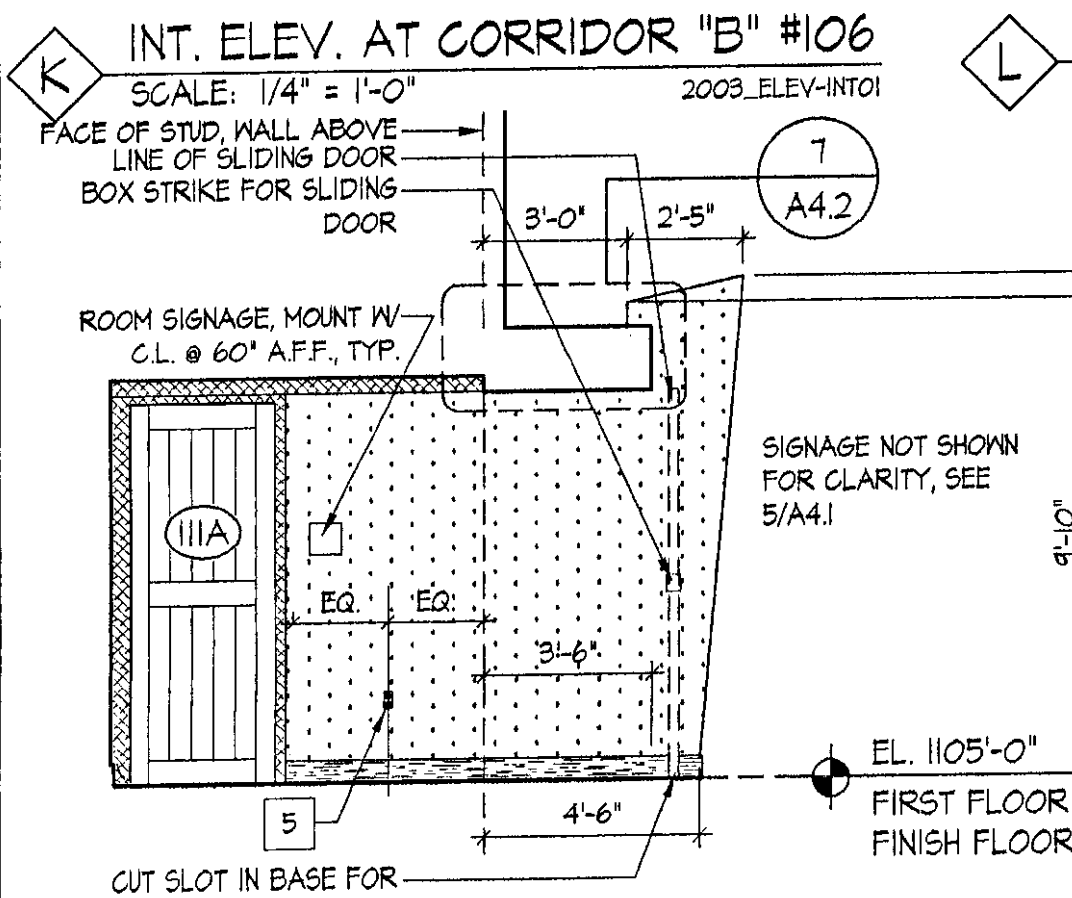
L INT. ELEV. AT CORRIDOR "B" #106/CORRIDOR "D" #112
 SCALE: 1/4" = 1'-0"
 2009_ELEV-INT01



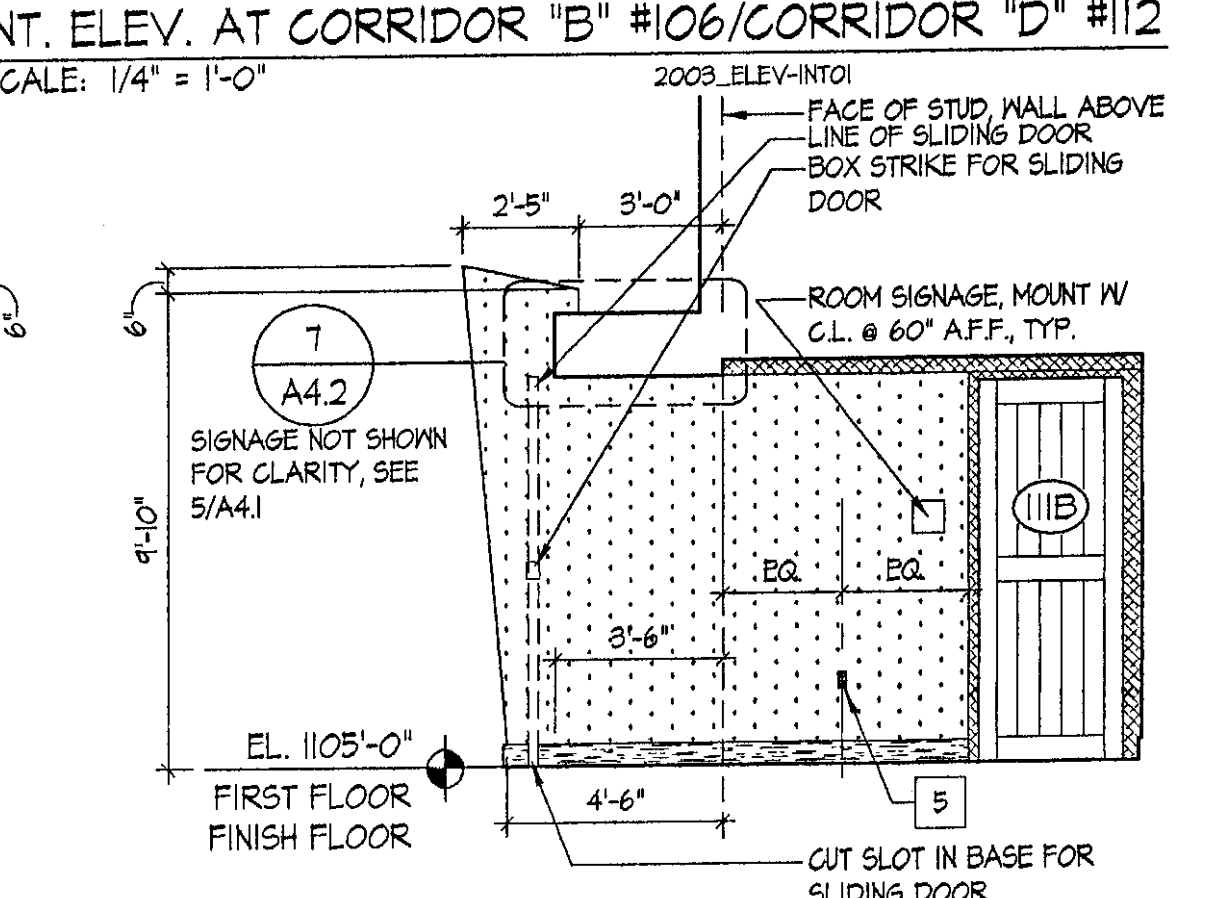
M INTERIOR ELEVATION AT CORR. "B" #106
 SCALE: 1/4" = 1'-0"
 2009_ELEV-INT01



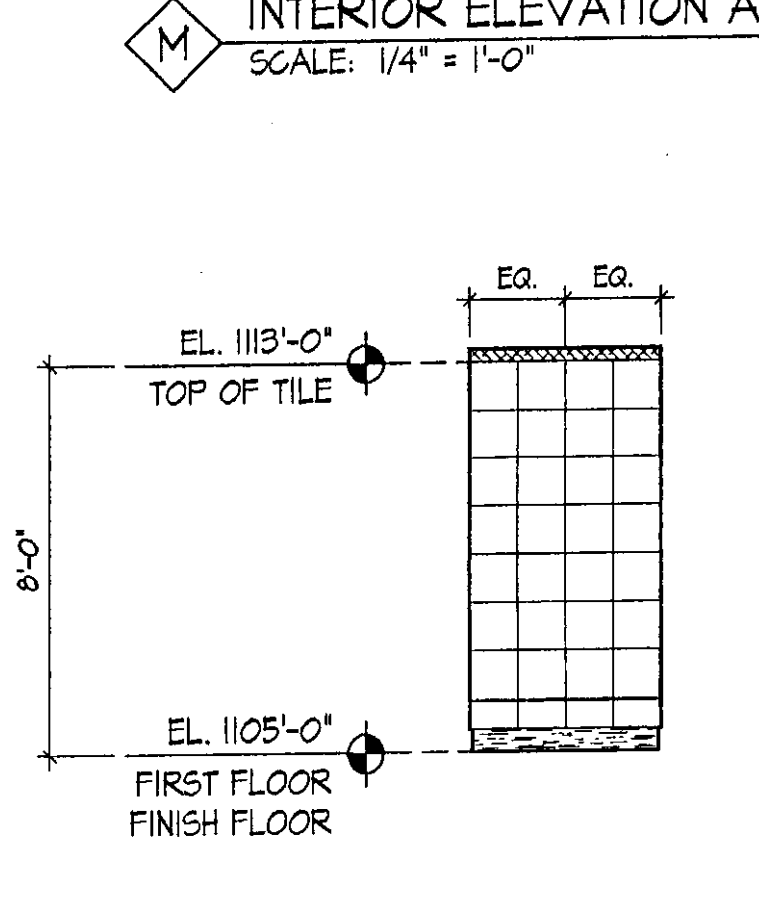
N FLOOR TRANSITION DETAIL
 SCALE: 3" = 1'-0"
 DTL-ARCH05



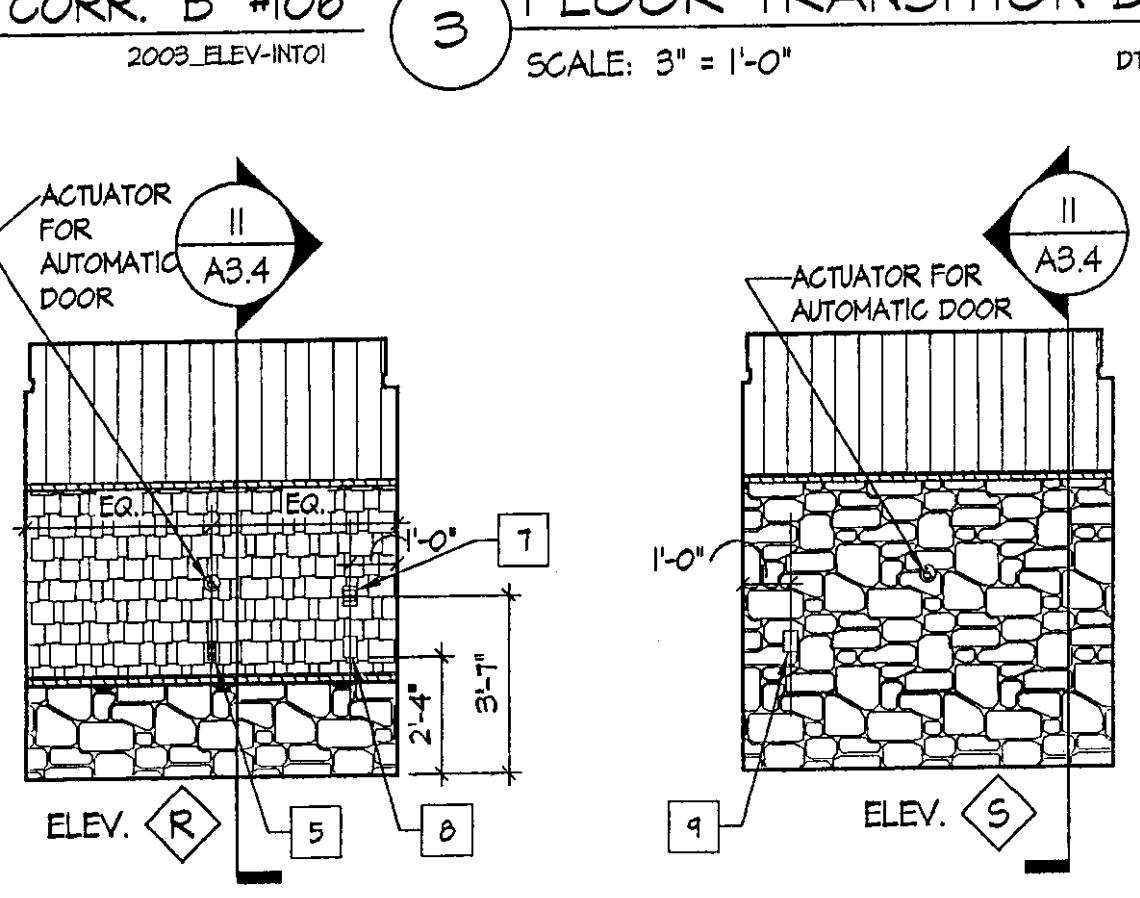
O INTERIOR ELEVATION AT CORRIDOR "C" #110
 SCALE: 1/4" = 1'-0"
 2009_ELEV-INT01



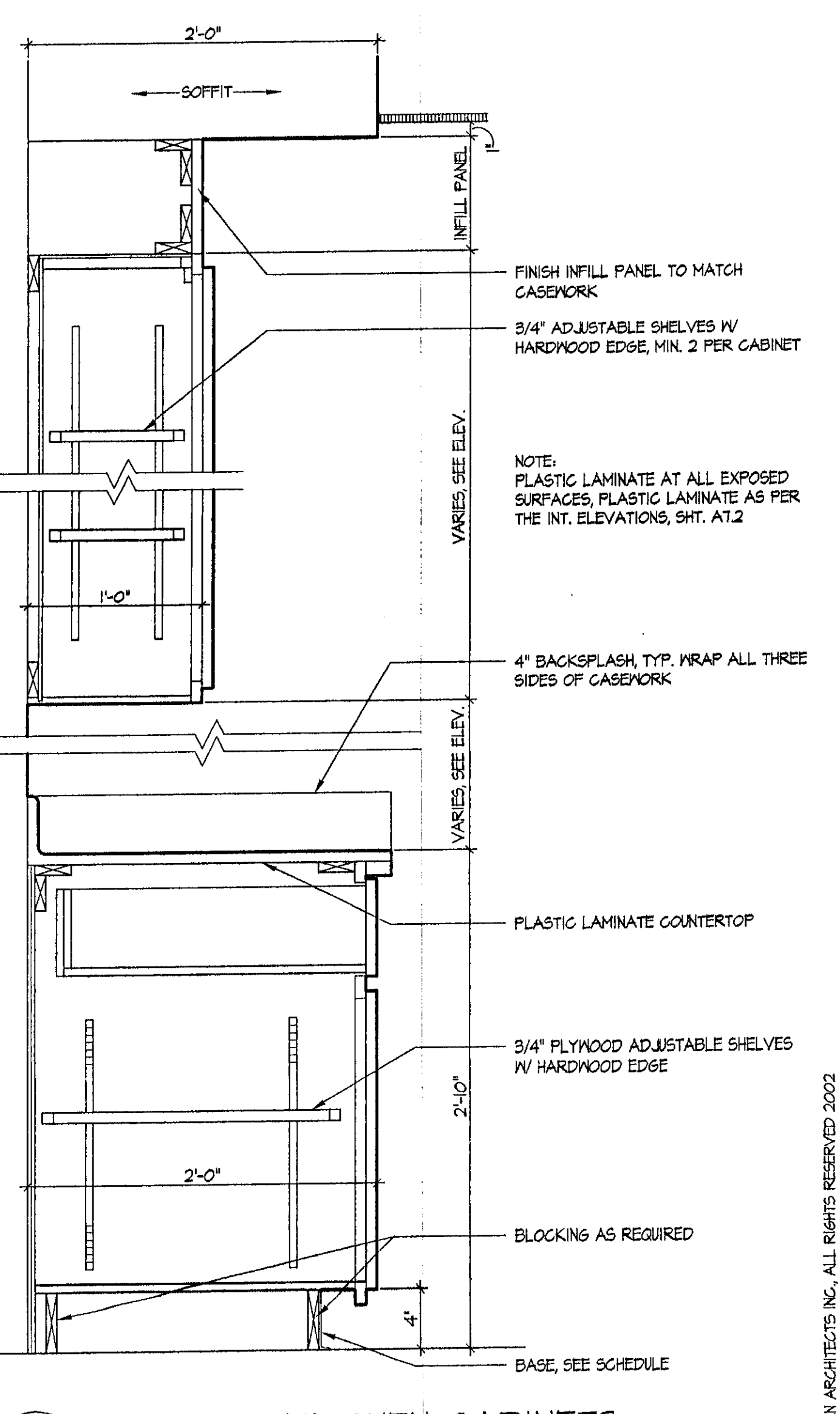
P INTERIOR ELEVATION AT CORRIDOR "D" #112
 SCALE: 1/4" = 1'-0"
 2009_ELEV-INT01



Q INT. ELEV. AT CORR. "C" #110
 SCALE: 1/4" = 1'-0"
 2009_ELEV-INT01



R INTERIOR ELEVATIONS AT VESTIBULE #100
 SCALE: 1/4" = 1'-0"
 2009_ELEV-INT01



S SECTION @ KITCHEN CABINETS
 SCALE: 1/2" = 1'-0"
 2009_DTL-WR01

PROJECT
DERBY WELCOME CENTER
 PROJECT #101-3(8)
 NEW FACILITY

DERBY VERMONT
 DATE: 01/07/2002
 SCALE: AS NOTED
 CHECKED: HS
 PROJECT NO: 2009

INTERIOR ELEVATIONS
 PUBLIC AREAS

A7.2

© NORTHERN ARCHITECTS, INC. ALL RIGHTS RESERVED 2002