

NORTHERN ARCHITECTS
 207 KING STREET
 SUITE 3
 BURLINGTON, VERMONT
 05401-4502
 802-658-1953

CONSULTANTS
 CIVIL
 KREBS AND LANGING
 10 Main Street
 Colchester VT 05446
 (802)-878-0375
 LANDSCAPE ARCHITECT
OHKW
 7 Marble Ave.
 Burlington VT 05401
 (802)-864-0010
 STRUCTURAL
 RICHARD M. DOWNEY, P.E.
 111 St. Paul Street
 Burlington VT 05401
 (802)-660-4212
 PLUMBING, MECHANICAL
 AND ELECTRICAL
 DUFRESNE AND HENRY
 Precision Park
 North Springfield VT 05150-0029
 (802)-886-2261

REVISIONS

PROJECT
DERBY WELCOME CENTER
 PROJECT #101 091-3(8)

NEW FACILITY

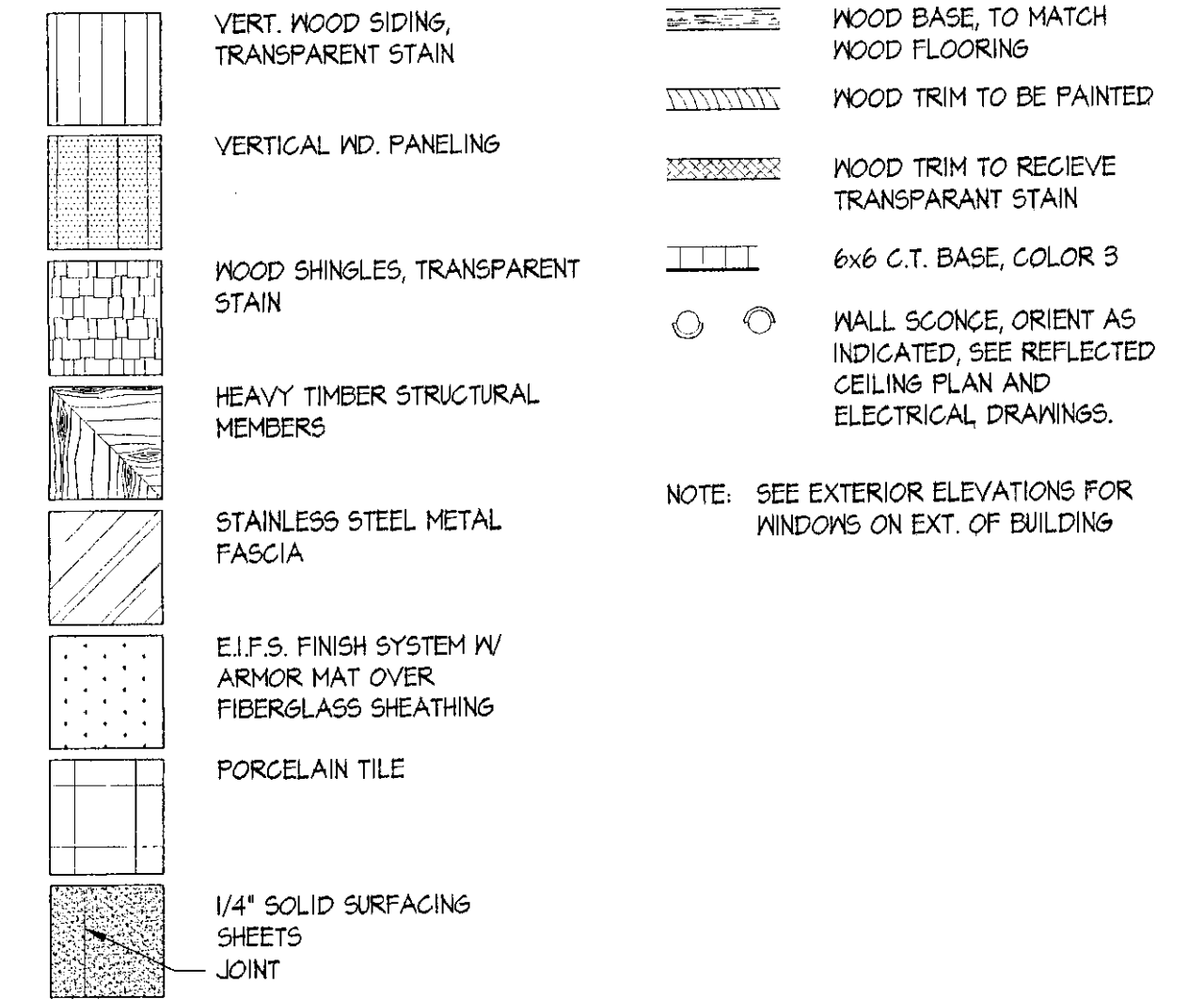
DERBY VERMONT

DATE: 01/01/2002
 SCALE: AS NOTED
 CHECKED: HS
 PROJECT NO: 2003

INTERIOR ELEVATIONS PUBLIC AREAS

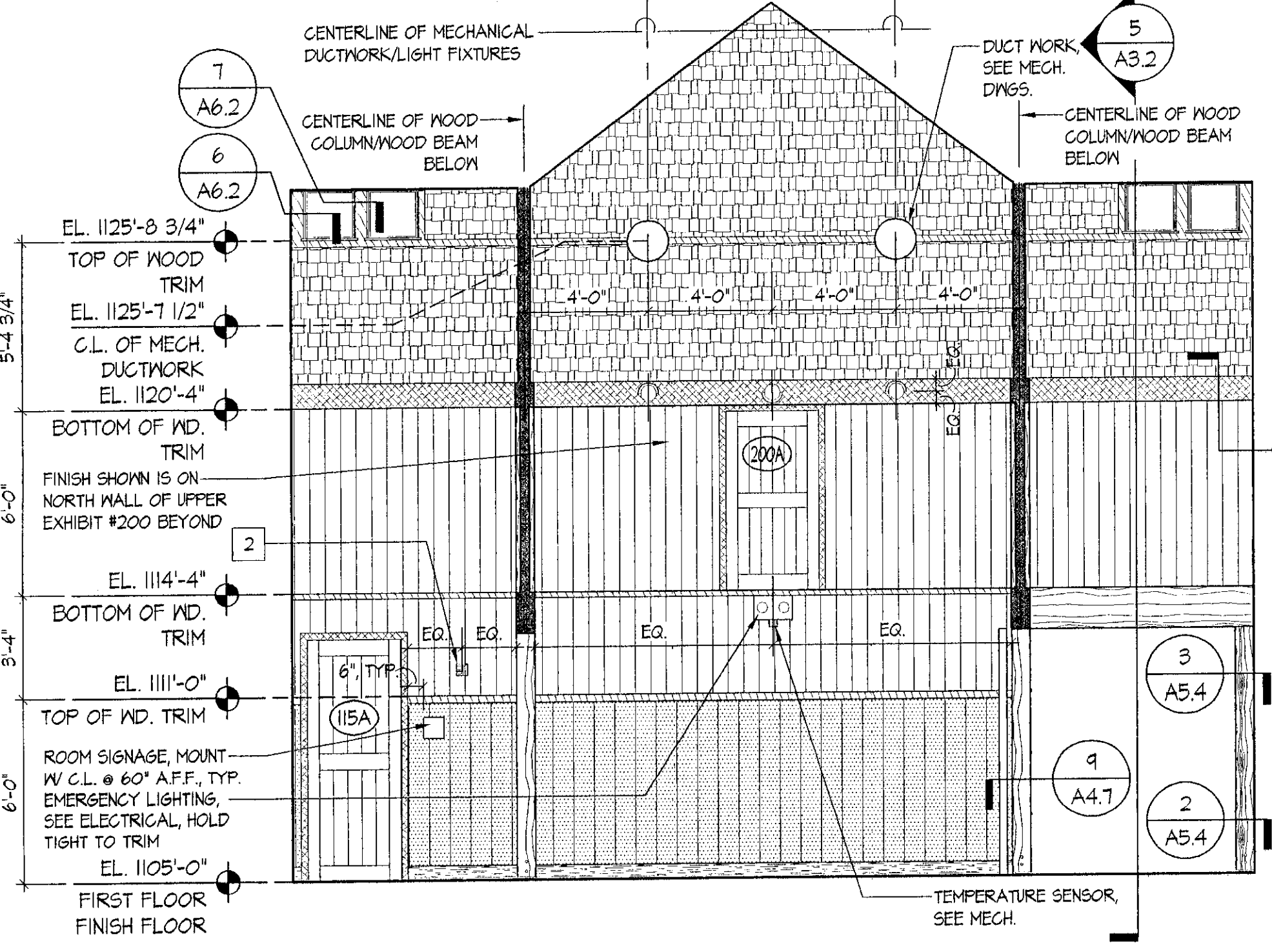
A7.1

INTERIOR ELEVATION LEGEND

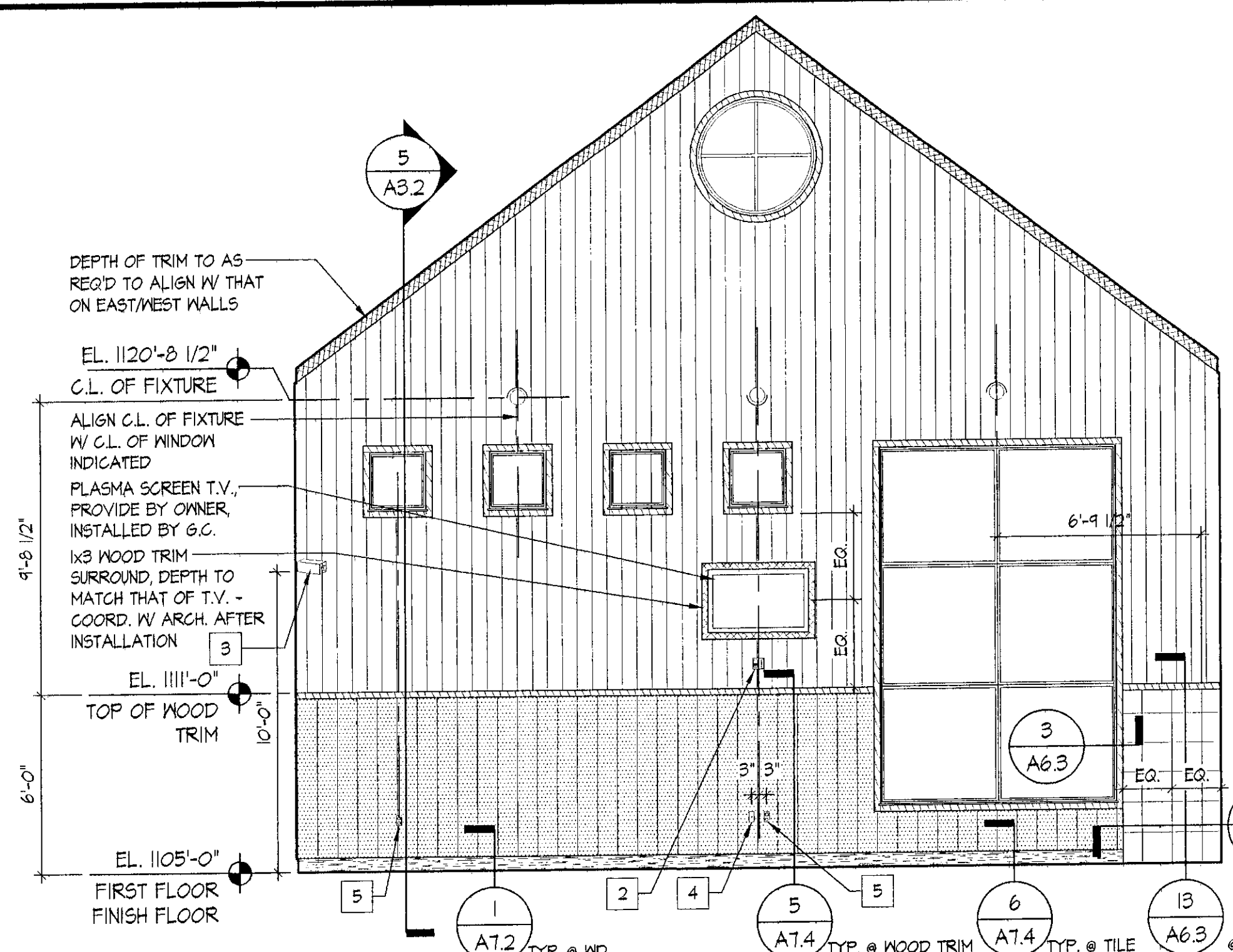


- FIRE ALARM VISUAL SIGNAL PER ELEC. DRNGS. MOUNT SO BOTTOM OF STROBE LIGHT IS 6'-8" AFF IN LOCATION SHOWN.
- FIRE ALARM COMBINED AUDIBLE/VISUAL SIGNAL PER ELEC. DRNGS. MOUNT SO BOTTOM OF STROBE LIGHT IS 6'-8" AFF IN LOCATION SHOWN.
- SECURITY CAMERA PER ELEC. DRAWINGS.
- TEL/DATA OUTLET PER ELEC. DRAWINGS. MOUNT AT 18" AFF AT LOCATION SHOWN.
- DUPLEX CONVENIENCE OUTLET PER ELEC. DRAWINGS. MOUNT TYPICALLY AT 18" AFF AT LOCATION SHOWN, U.O.N.
- WALL-MOUNTED EXIT SIGN PER ELEC. DRAWINGS. MOUNT WITH BOTTOM AT 8'-4" AFF
- FIRE ALARM MANUAL PULL STATION PER ELEC. DRAWINGS
- ELECTRONIC COUNTER PER ELEC. DRAWINGS
- ELECTRONIC COUNTER REFLECTOR PER ELEC. DRAWINGS
- GFCI OUTLET PER ELEC. DRAWINGS. MOUNT AT 42" AFF AT LOCATION SHOWN.

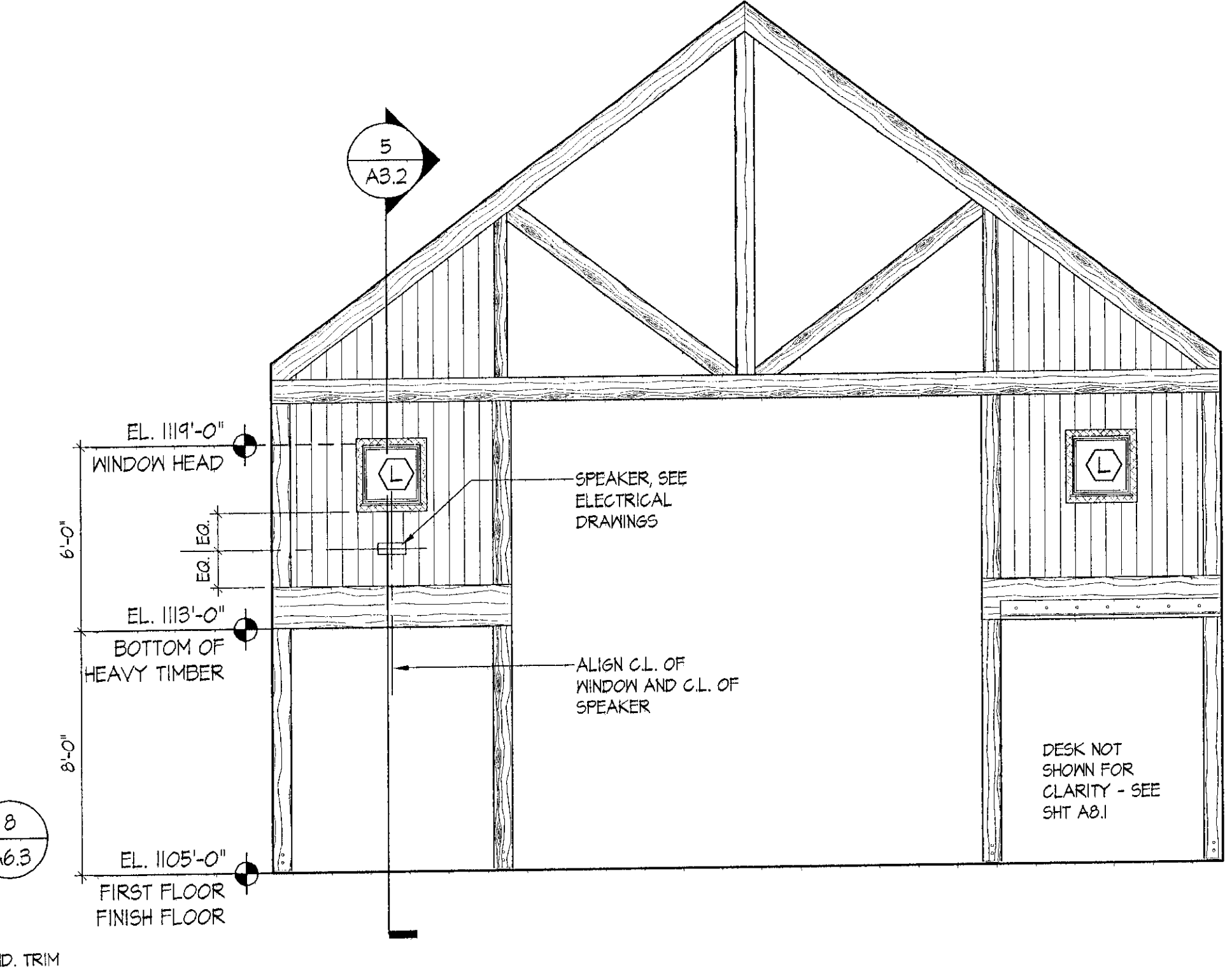
NOTE: SEE EXTERIOR ELEVATIONS FOR WINDOWS ON EXT. OF BUILDING



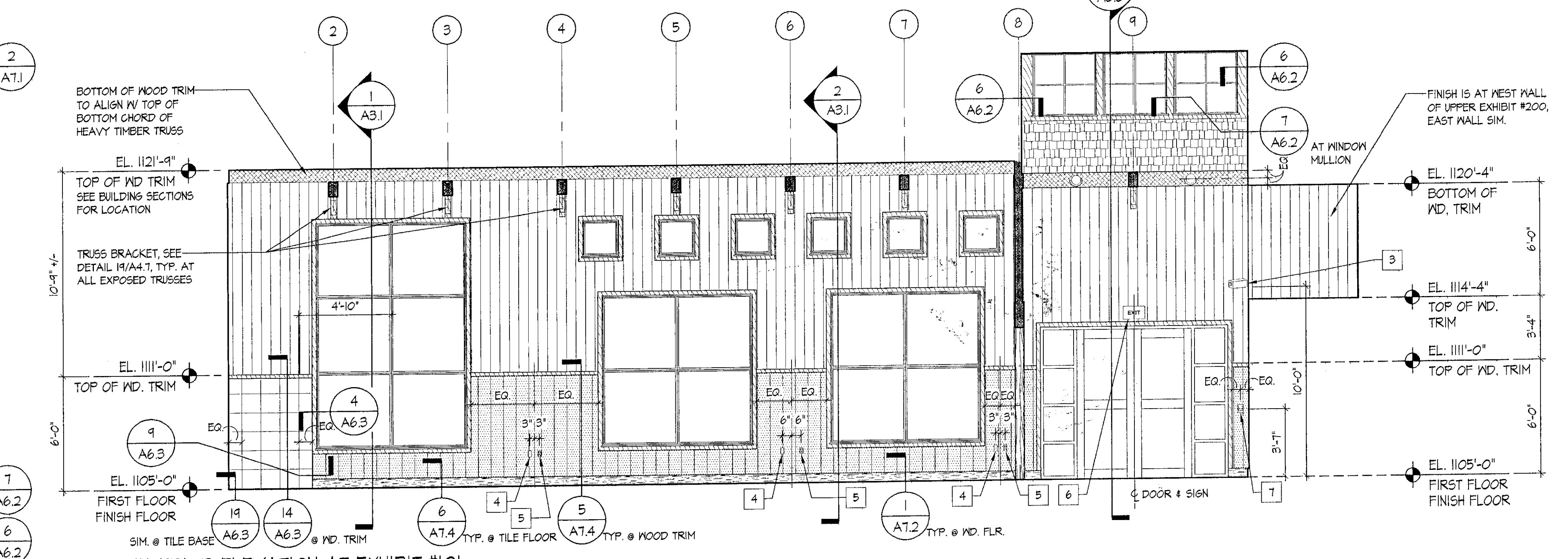
C INTERIOR ELEVATION AT EXHIBIT #101
 SCALE: 1/4" = 1'-0"



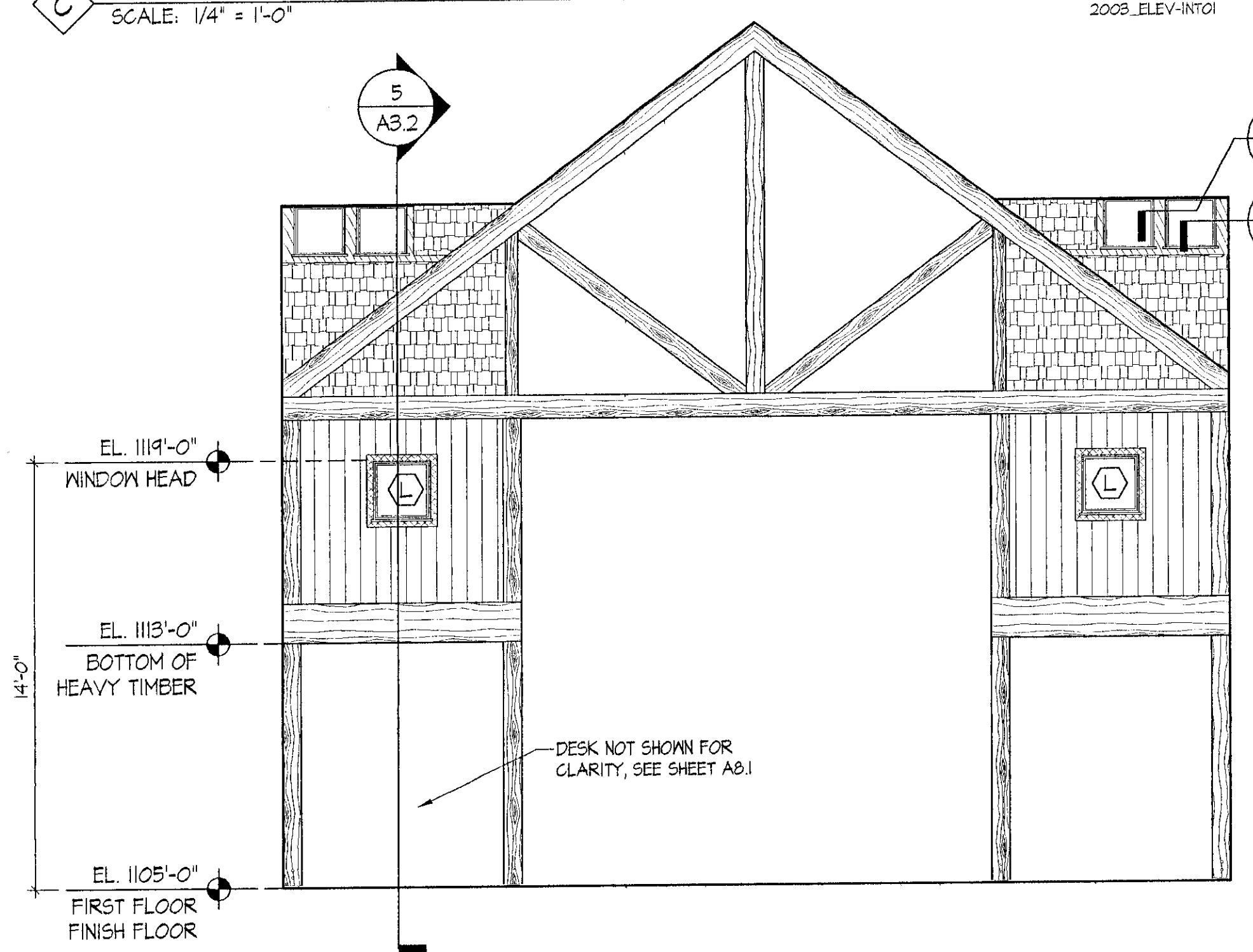
A INTERIOR ELEVATION AT EXHIBIT #101
 SCALE: 1/4" = 1'-0"



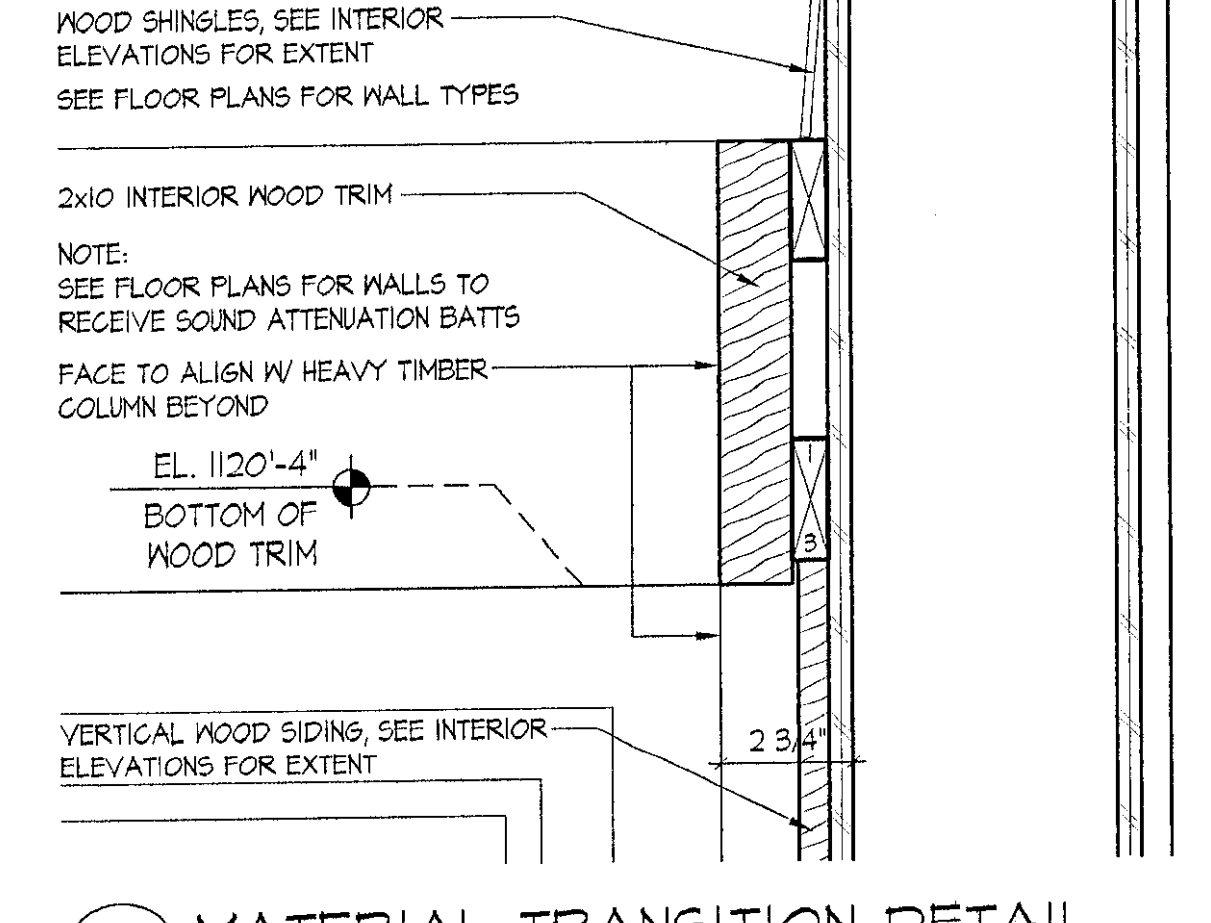
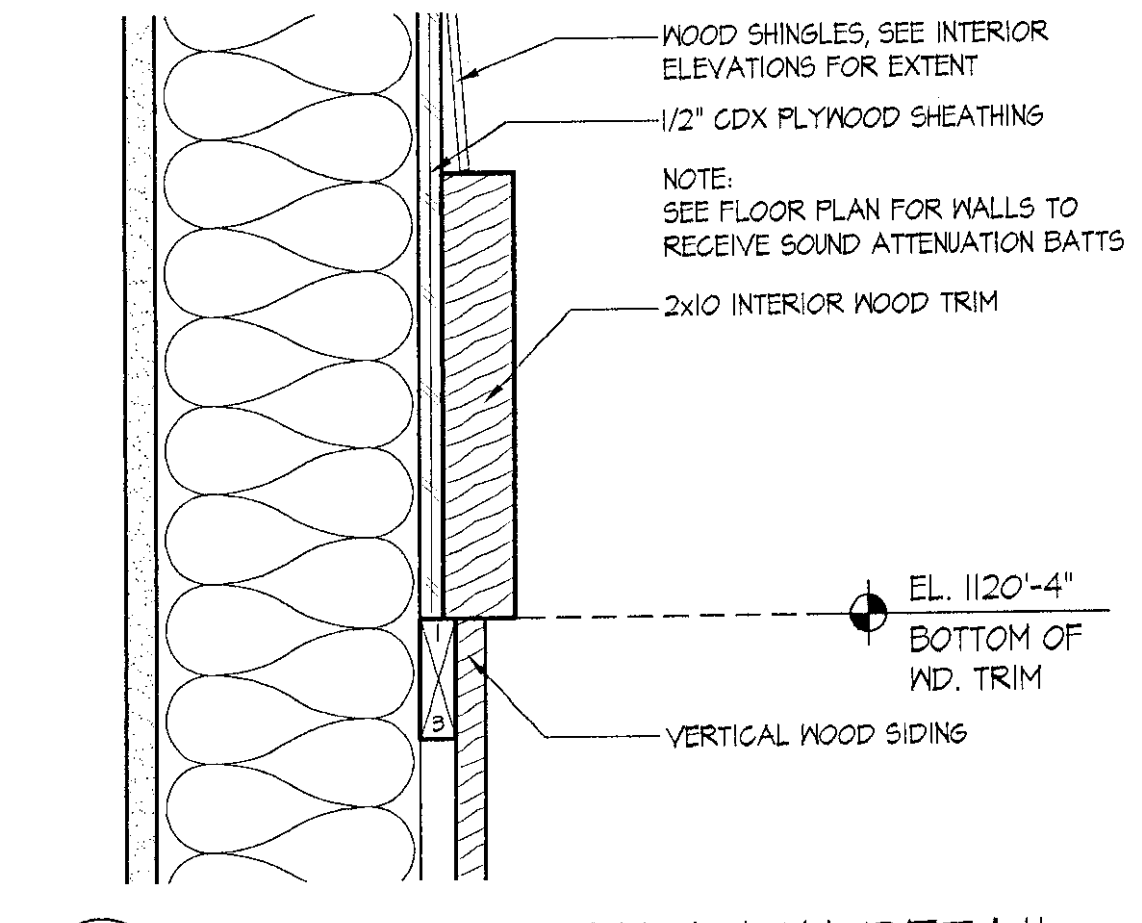
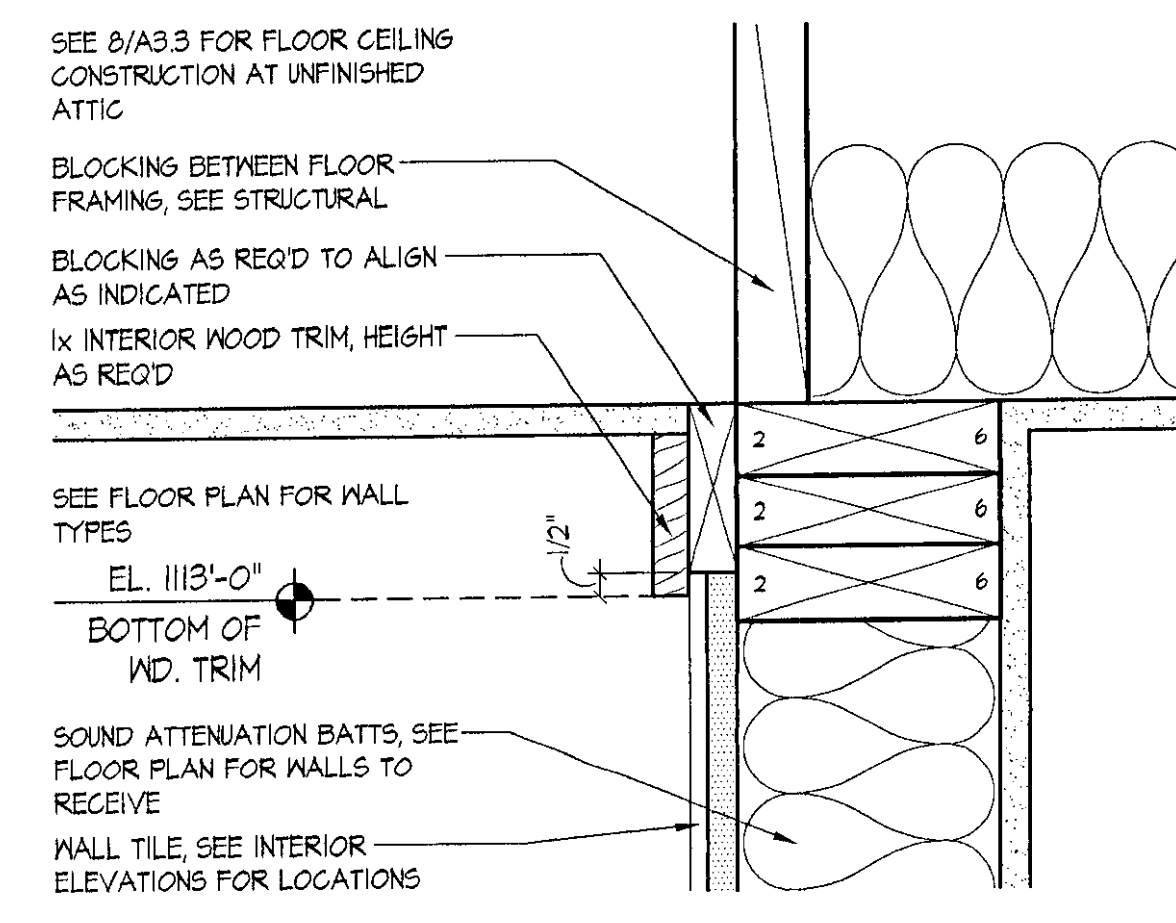
B INTERIOR ELEVATION AT EXHIBIT #101
 SCALE: 1/4" = 1'-0"



D INTERIOR ELEVATION AT EXHIBIT #101
 SCALE: 1/4" = 1'-0"



E INTERIOR ELEVATION AT EXHIBIT #101
 SCALE: 1/4" = 1'-0"



© NORTHERN ARCHITECTS INC. ALL RIGHTS RESERVED 2002