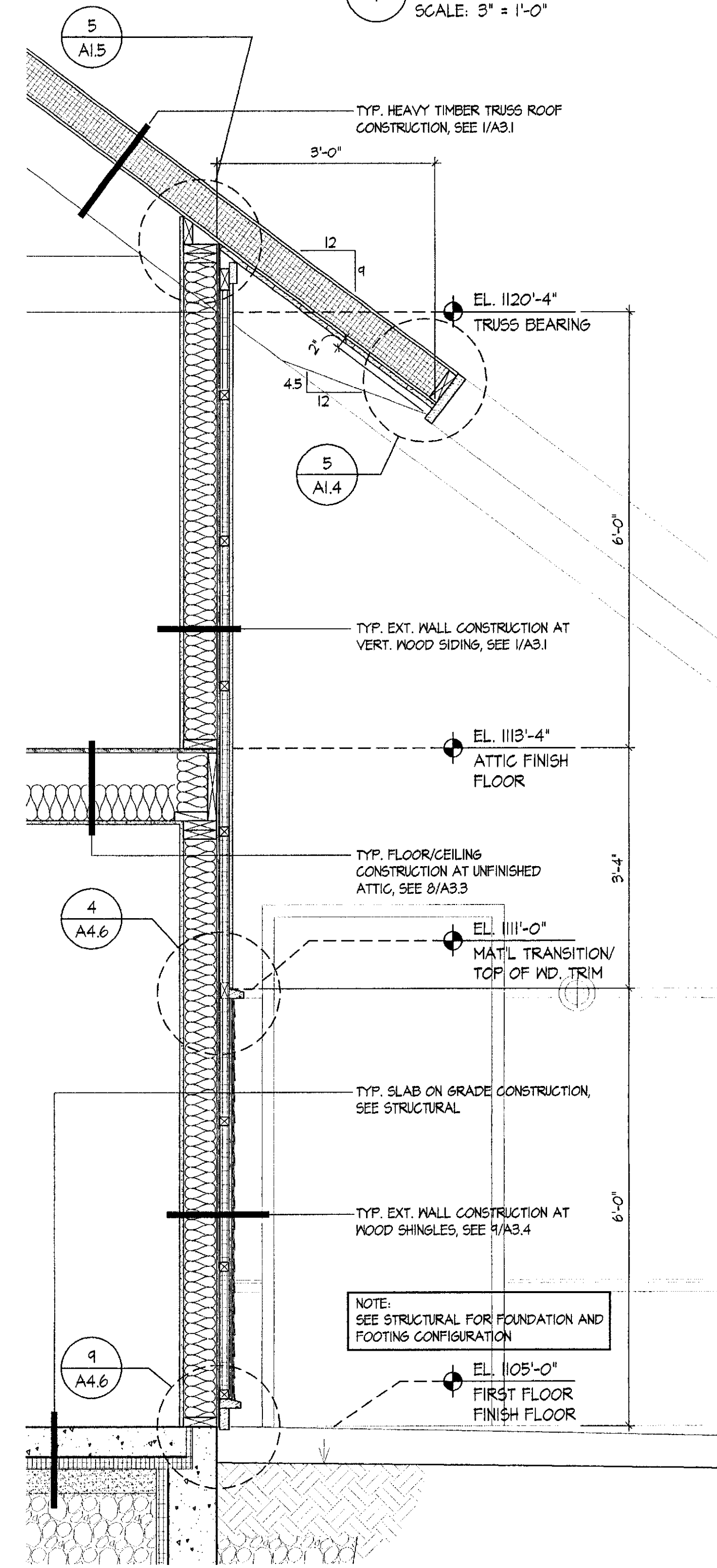
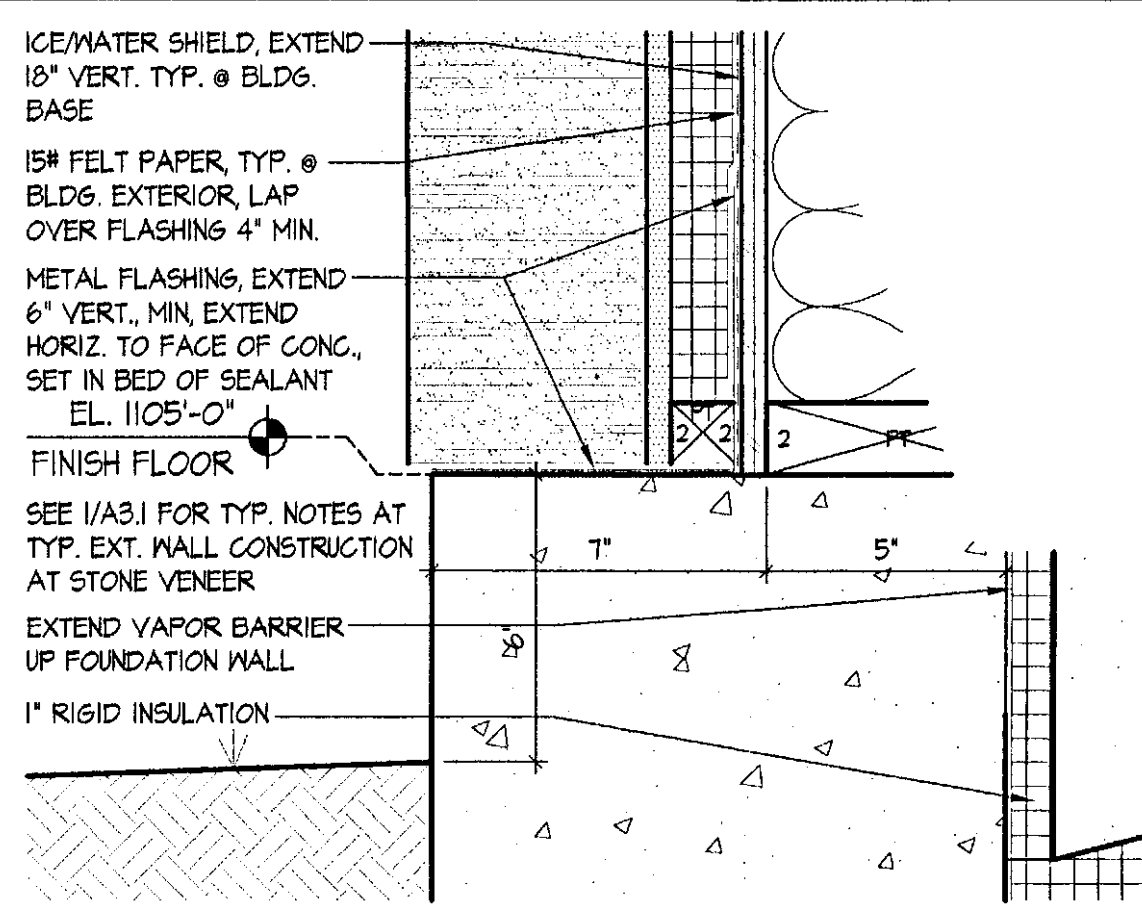


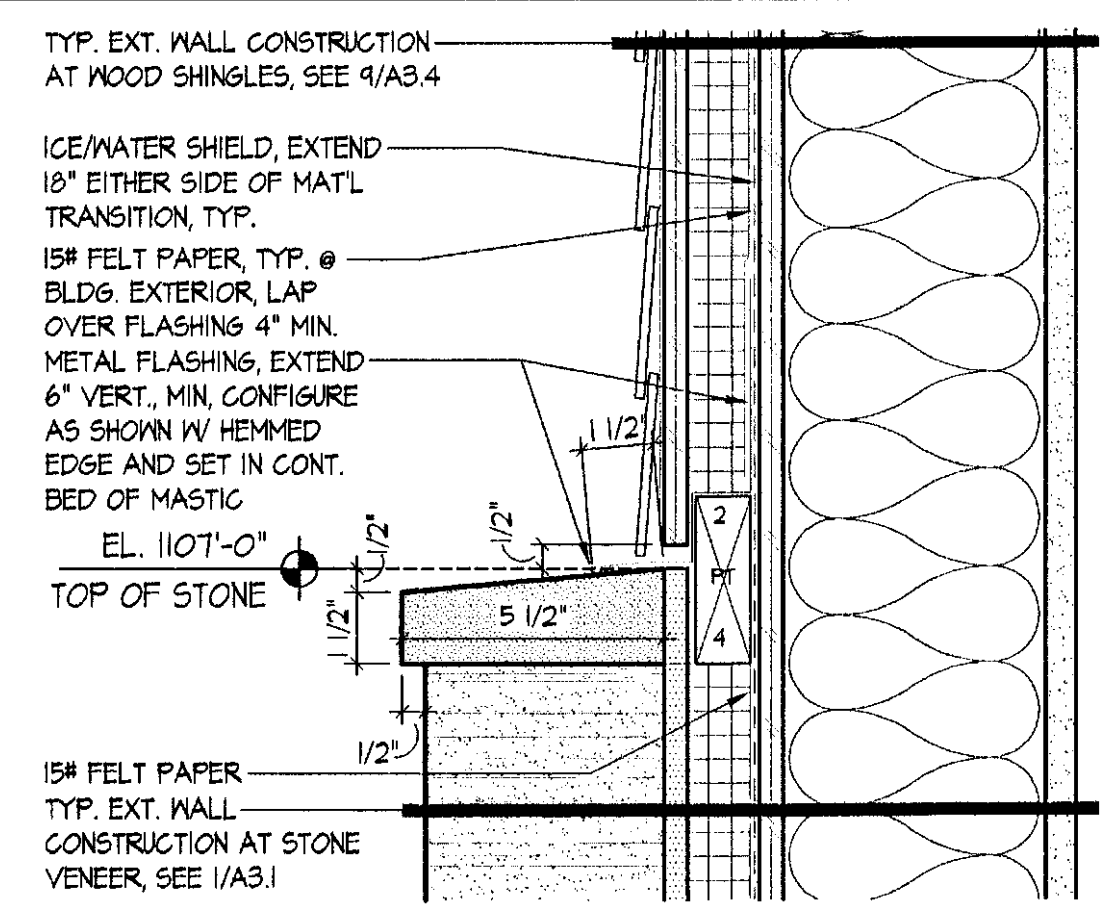
**22 INTERIOR WALL SECTION**  
SCALE: 3/4" = 1'-0"  
2009\_W608



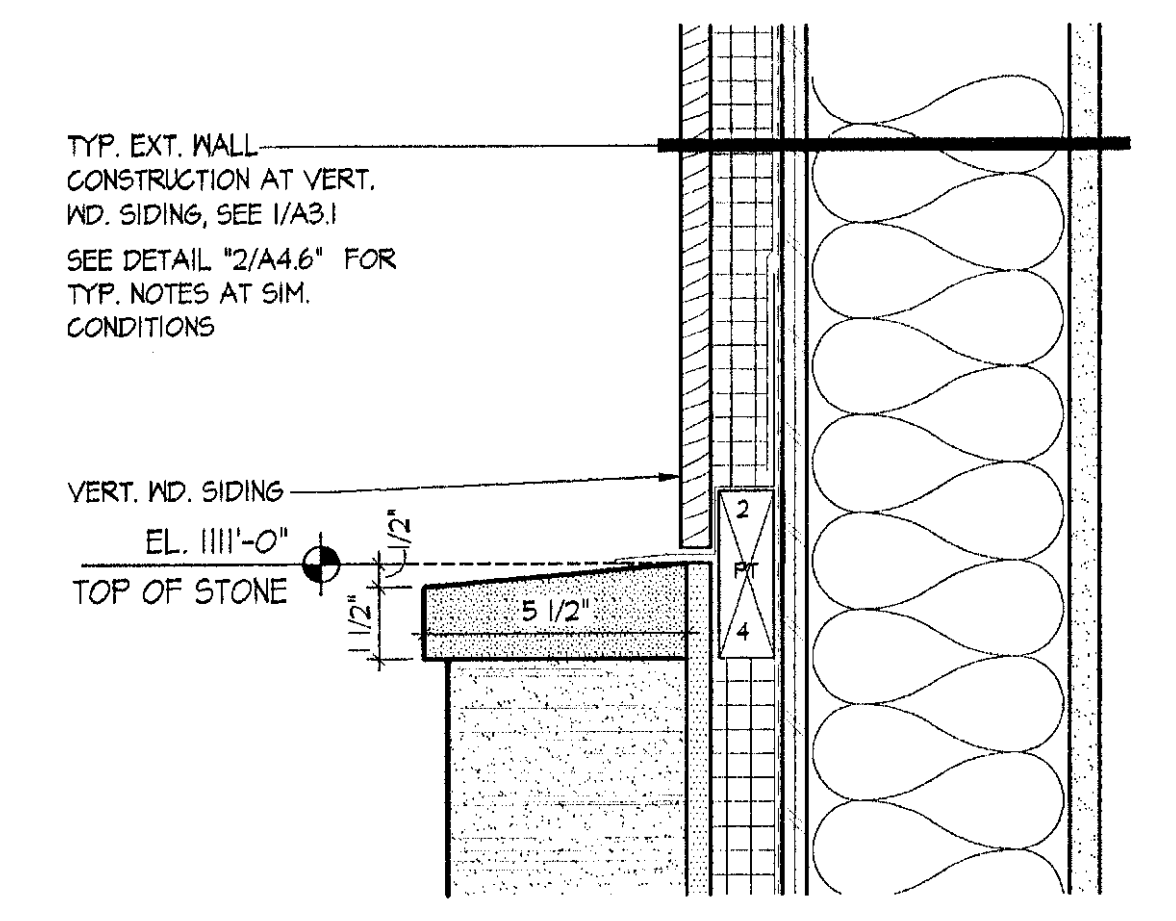
**23 EXTERIOR WALL SECTION**  
SCALE: 3/4" = 1'-0"  
2009\_B615



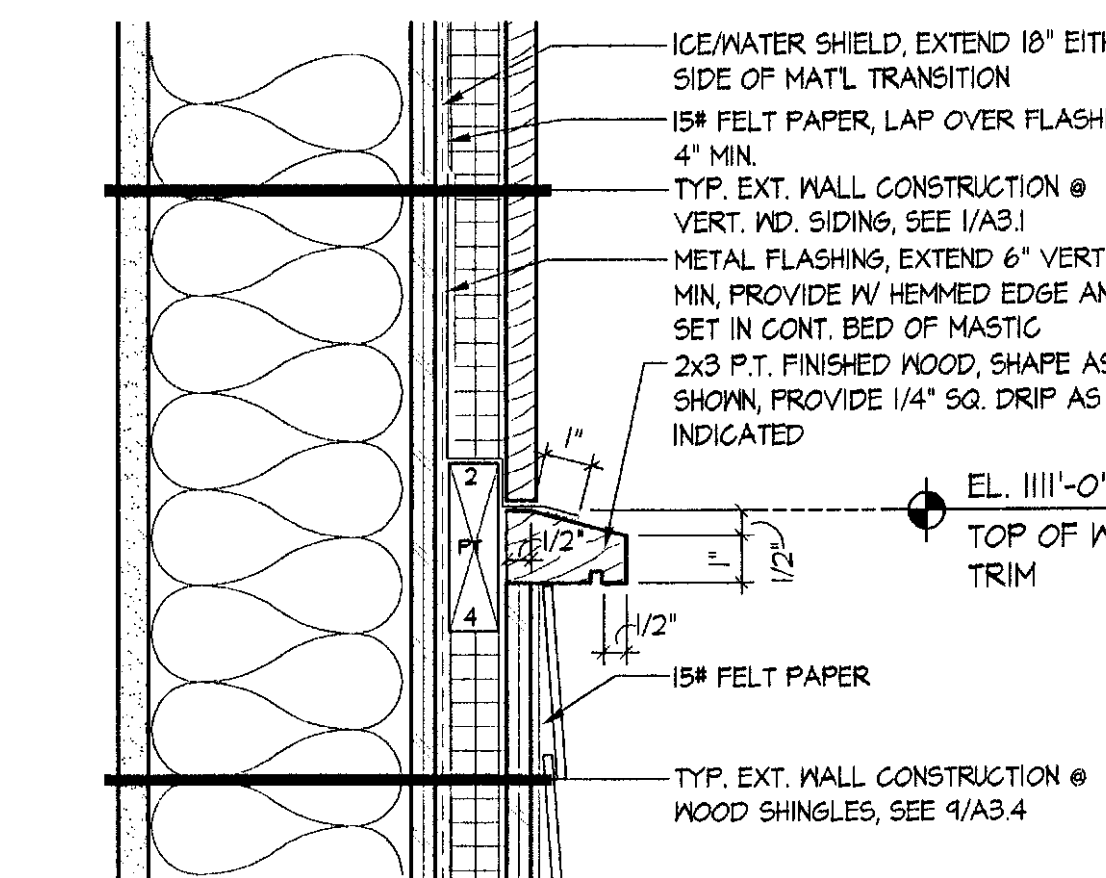
**1 FOUNDATION DETAIL**  
SCALE: 3" = 1'-0"  
2009\_B602



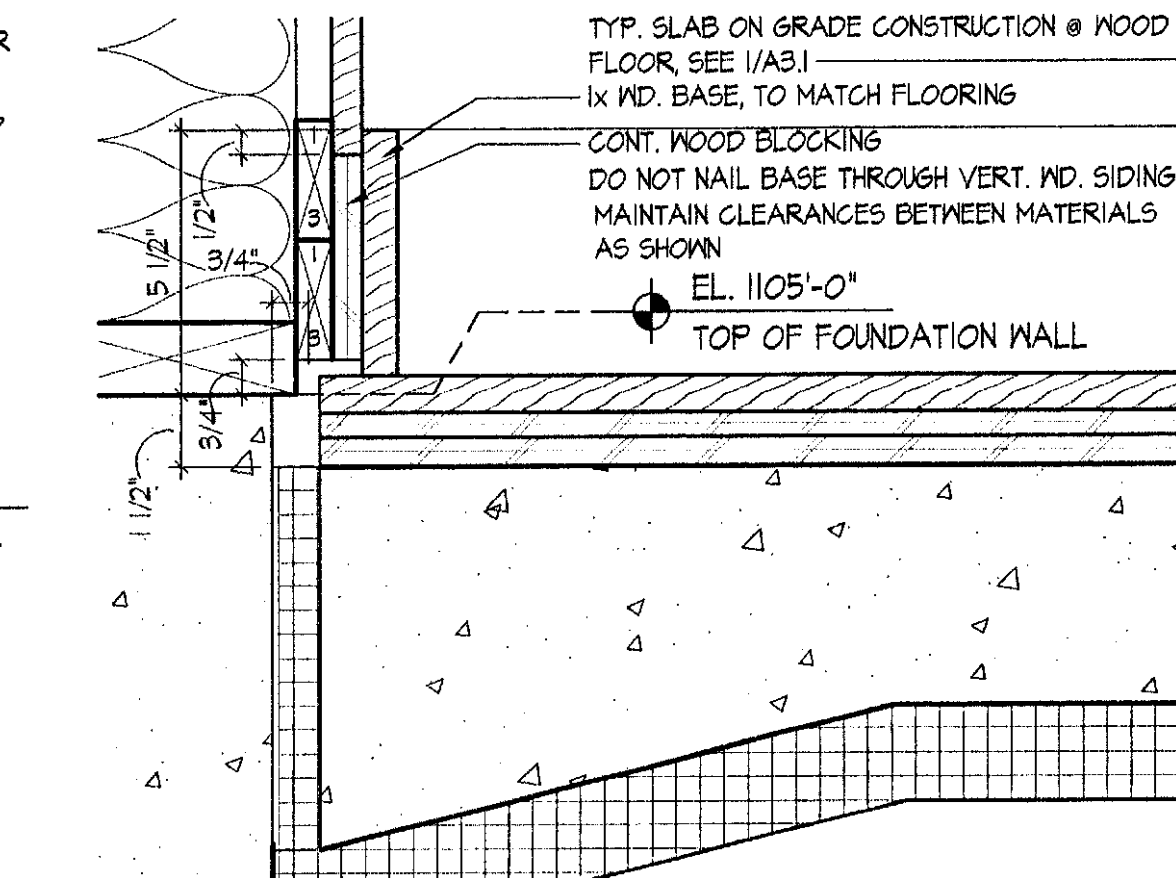
**2 STONE/SHINGLES TRANSITION DTL.**  
SCALE: 3" = 1'-0"  
2009\_B602



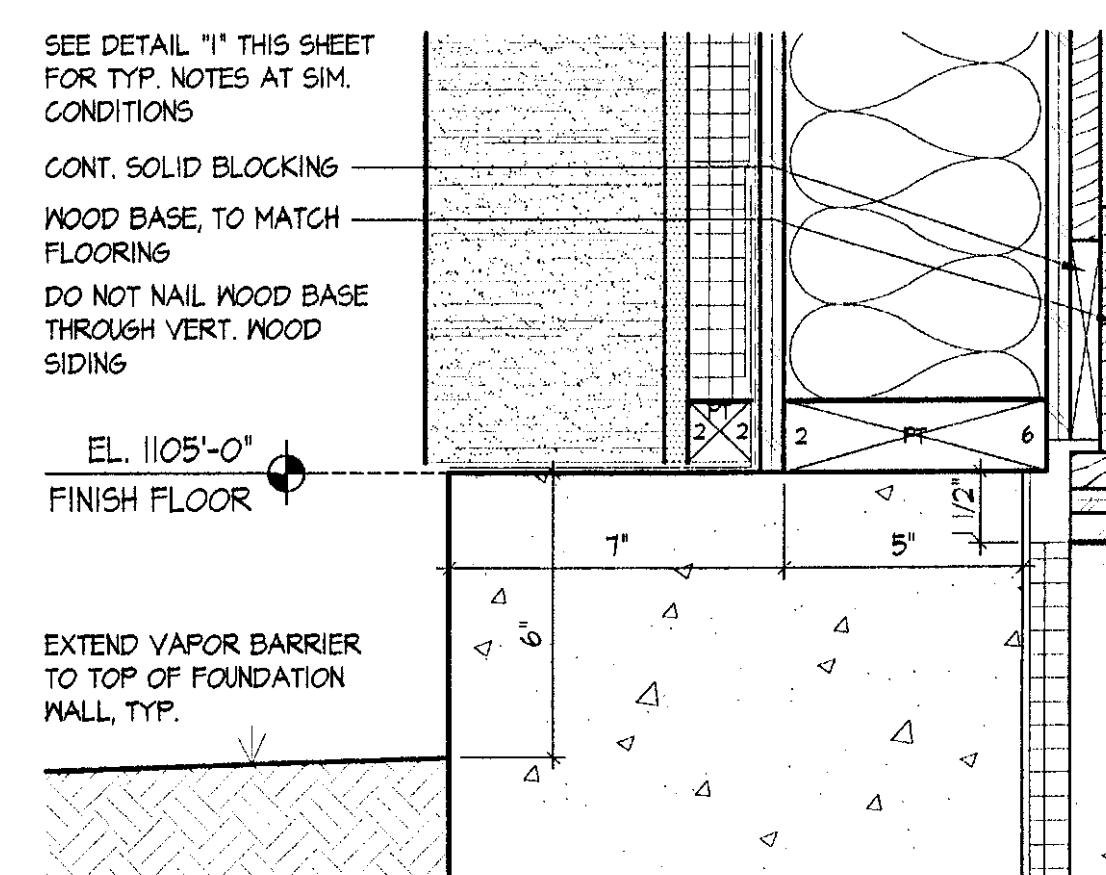
**3 STONE/VERT. WD. TRANSITION DTL.**  
SCALE: 3" = 1'-0"  
2009\_B603



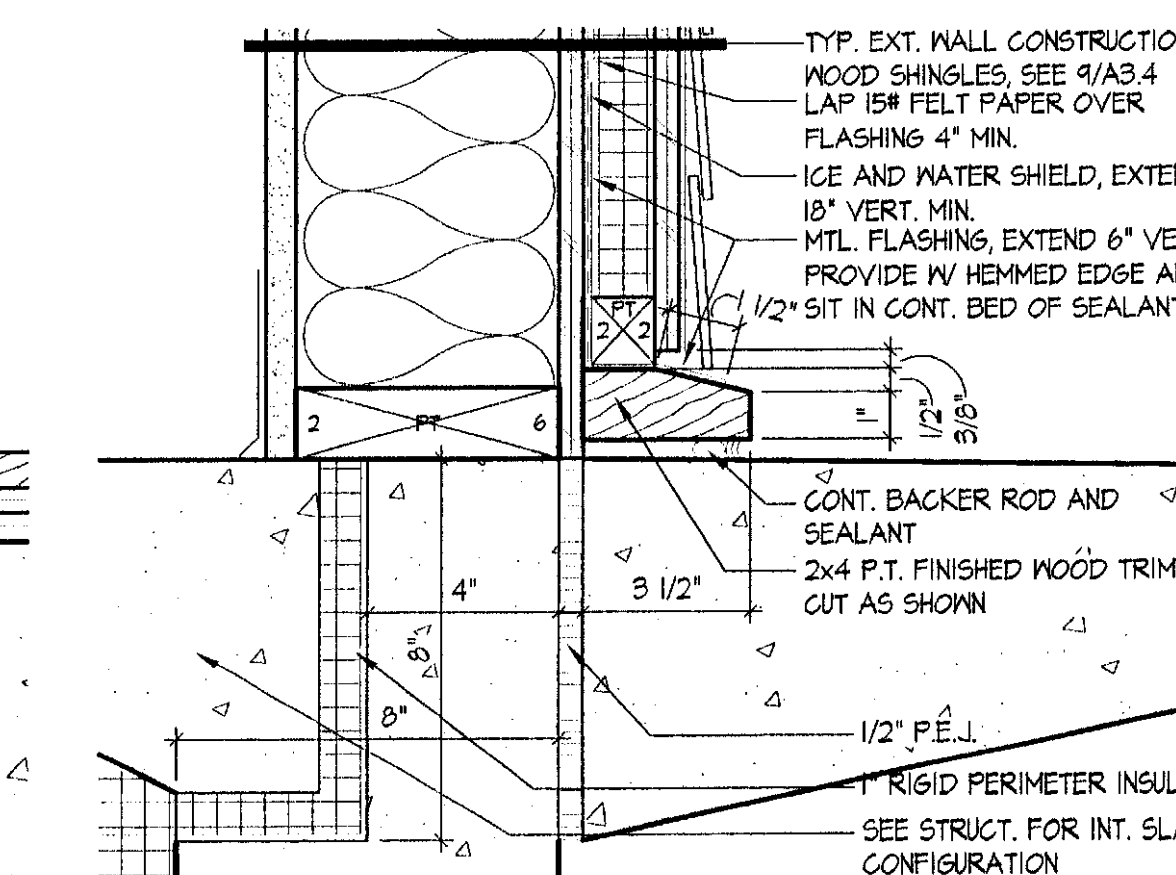
**4 WOOD TRIM DTL. @ TRANSITION**  
SCALE: 3" = 1'-0"  
2009\_B603



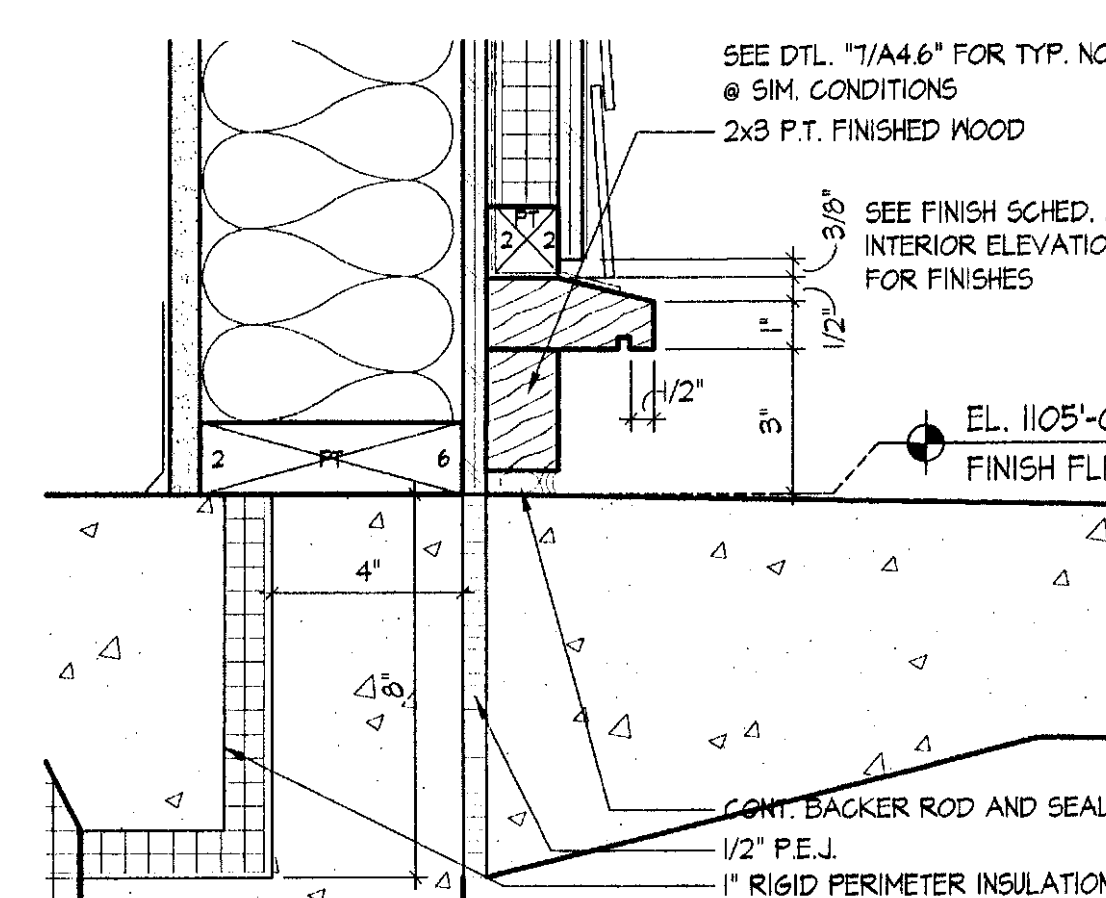
**5 RECESSED SLAB DTL. @ PERIMETER**  
SCALE: 3" = 1'-0"  
2009\_B601



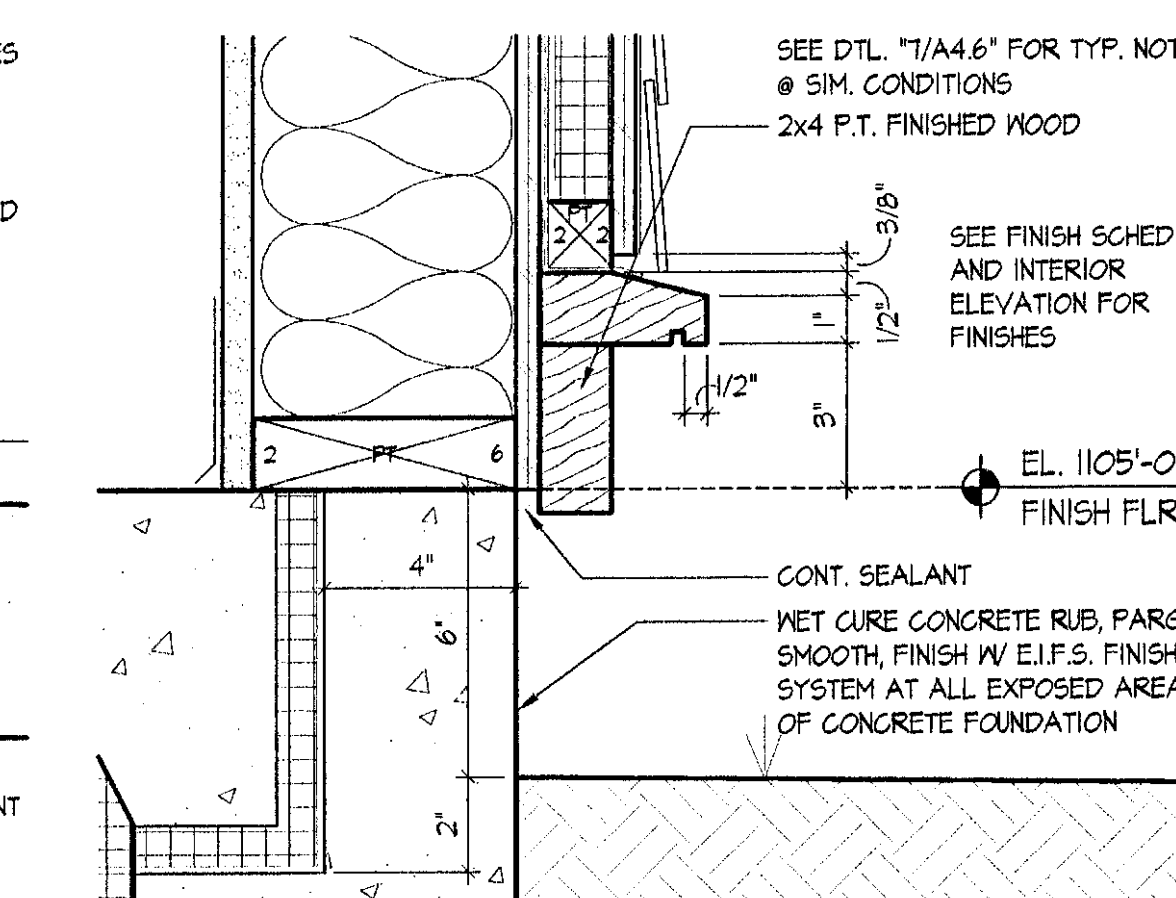
**6 RECESSED SLAB @ SHEARWALL**  
SCALE: 3" = 1'-0"  
2009\_W601



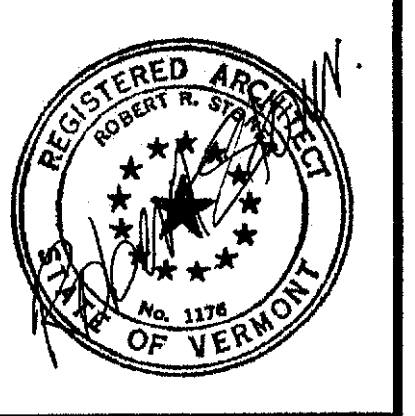
**7 FOUNDATION DTL. @ SOUTH PORCH**  
SCALE: 3" = 1'-0"  
2009\_W603



**8 FOUNDATION DTL. @ NORTH PORCH**  
SCALE: 3" = 1'-0"  
2009\_B614



**9 FOUNDATION DETAIL**  
SCALE: 3" = 1'-0"  
2009\_DTL-ARCH01



**NORTHERN ARCHITECTS**  
207 KING STREET  
SUITE 3  
BURLINGTON, VERMONT  
05401-4502  
802-658-1953

CONSULTANTS  
CIVIL  
KREBS AND LANGING  
10 Main Street  
Colchester VT 05446  
(802)-878-0315  
LANDSCAPE ARCHITECT  
**OHKW**  
7 Marble Ave.  
Burlington VT 05401  
(802)-864-0010  
STRUCTURAL  
RICHARD M. DOHERTY, P.E.  
117 St. Paul Street  
Burlington VT 05401  
(802)-660-4212  
PLUMBING, MECHANICAL,  
AND ELECTRICAL  
DUFRESNE AND HENRY  
Precision Park  
North Springfield VT 05150-0024  
(802)-886-2261

REVISIONS

PROJECT  
**DERBY WELCOMER CENTER**  
PROJECT #101-3(8)  
NEW FACILITY  
DERBY VERMONT

DATE: 01/07/2002  
SCALE: AS NOTED  
CHECKED: HS  
PROJECT NO: 2009

WALL SECTIONS AND GENERAL DETAILS

**A4.6**

© NORTHERN ARCHITECTS INC. ALL RIGHTS RESERVED 2002