



**NORTHERN ARCHITECTS**

207 KING STREET  
SUITE 3  
BURLINGTON, VERMONT  
05401-4502  
802-658-1953

CONSULTANTS  
CIVIL  
KREBS AND LANSING  
10 Main Street  
Colchester VT 05446  
(802)-878-0975

LANDSCAPE ARCHITECT  
**OHKW**  
7 Marble Ave.  
Burlington VT 05401  
(802)-864-0010  
STRUCTURAL  
RICHARD M. DOHERTY, P.E.  
117 St. Paul Street  
Burlington VT 05401  
(802)-660-9212  
PLUMBING, MECHANICAL,  
AND ELECTRICAL  
DUFRESNE AND HENRY  
Precision Park  
North Springfield VT 05150-0029  
(802)-886-2261

REVISIONS

PROJECT

**DERBY WELCOME CENTER**

PROJECT #IM 091-3(8)

NEW FACILITY

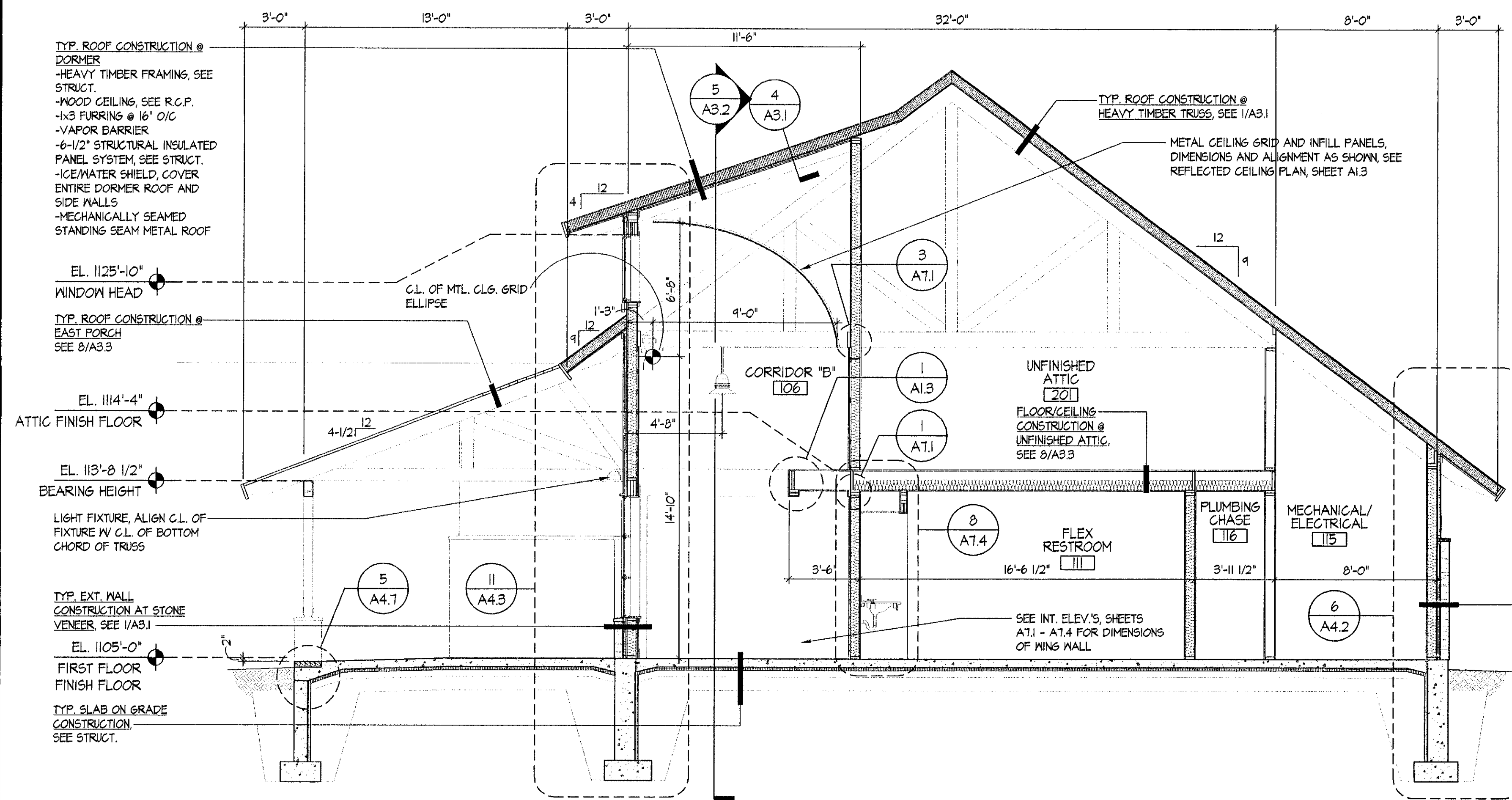
DERBY  
VERMONT

DATE: 01/07/2002  
SCALE: AS NOTED  
CHECKED: HS  
PROJECT NO: 2009

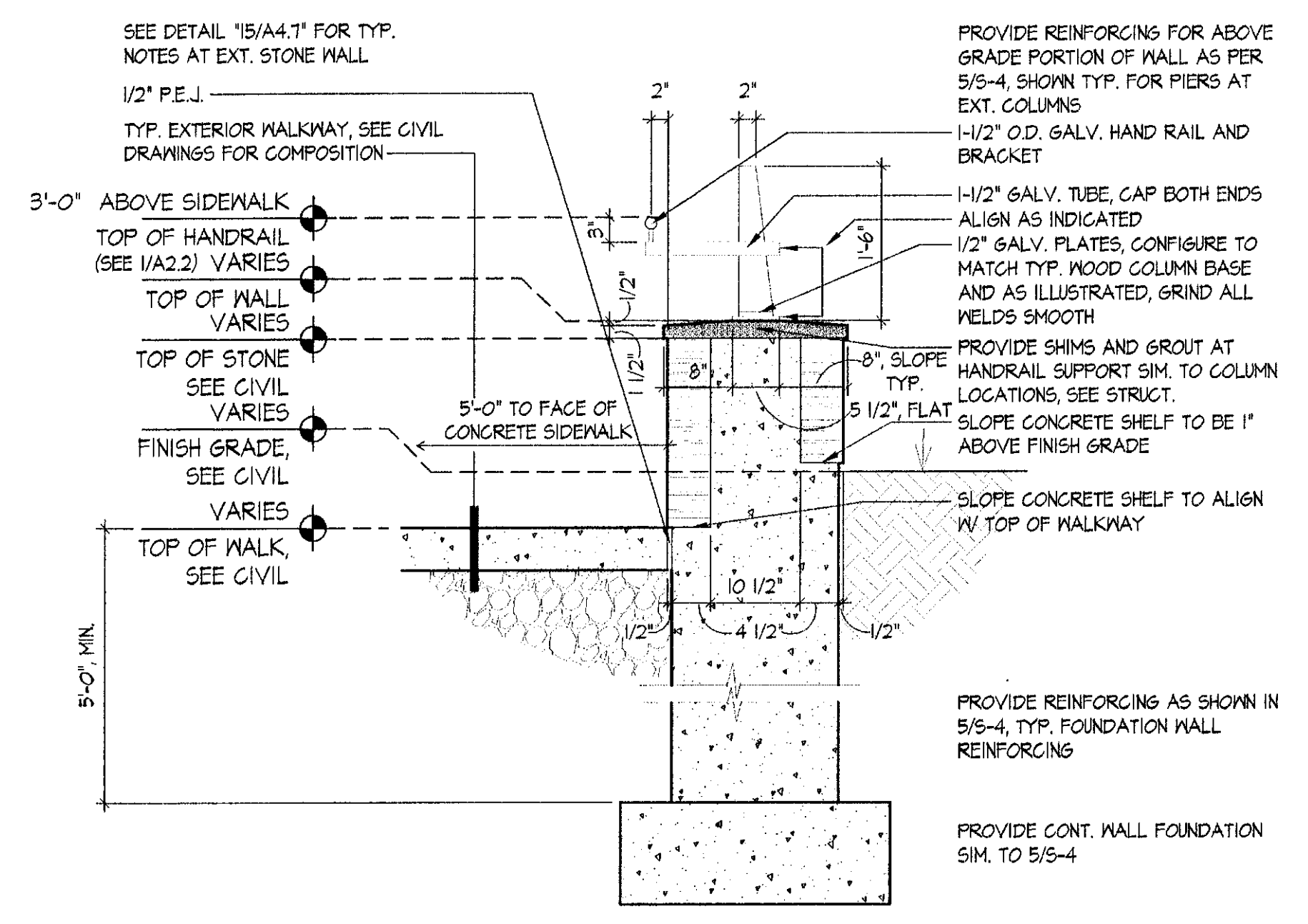
**BUILDING SECTIONS**

**A3.2**

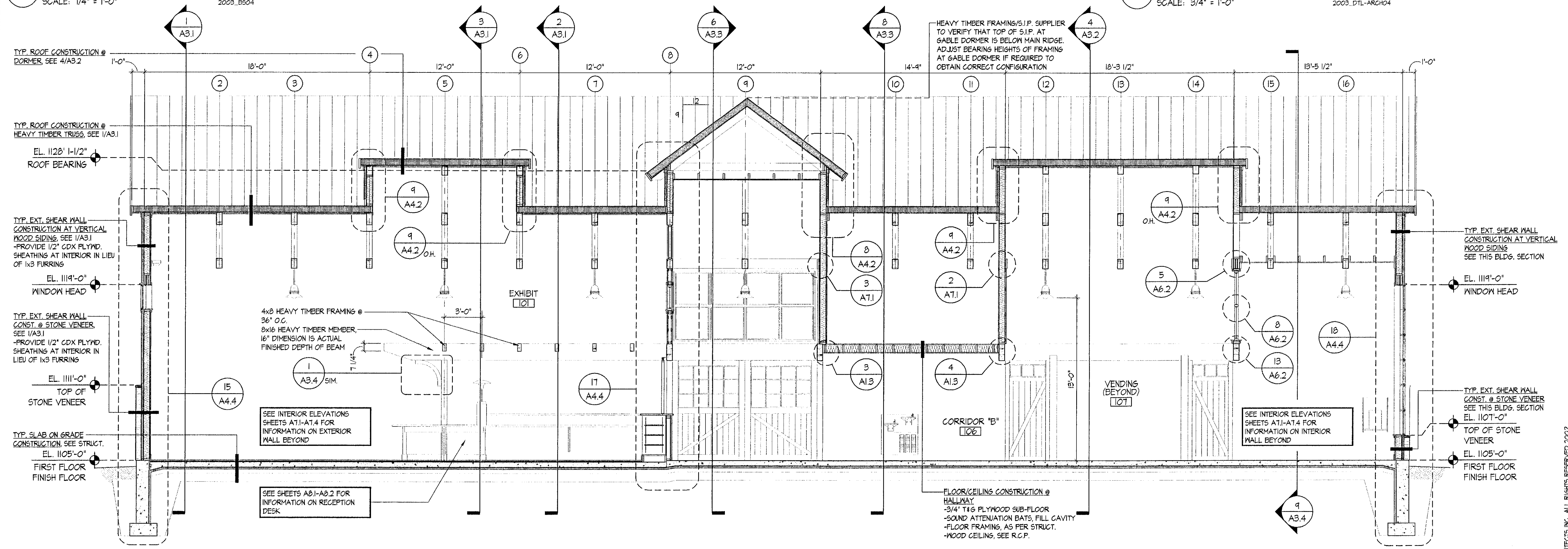
© NORTHERN ARCHITECTS INC. ALL RIGHTS RESERVED 2002



**4 BUILDING SECTION AT SHED DORMER**  
SCALE: 1/4" = 1'-0"  
2009\_B504



**1 STONE WALL SECTION @ RAMP**  
SCALE: 3/4" = 1'-0"  
2009\_DTL-ARCH04



**5 BUILDING SECTION AT CORRIDOR "B"**  
SCALE: 1/4" = 1'-0"  
2009\_B506