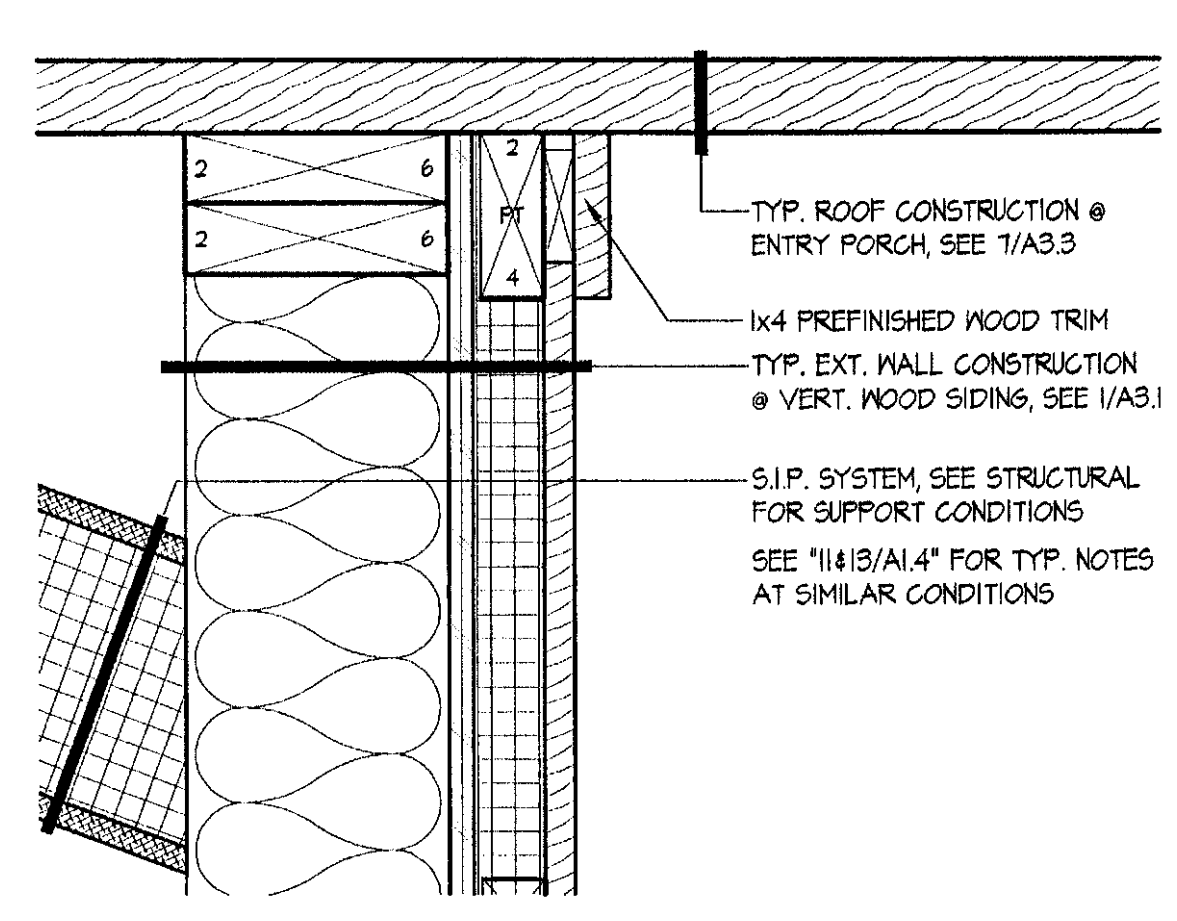
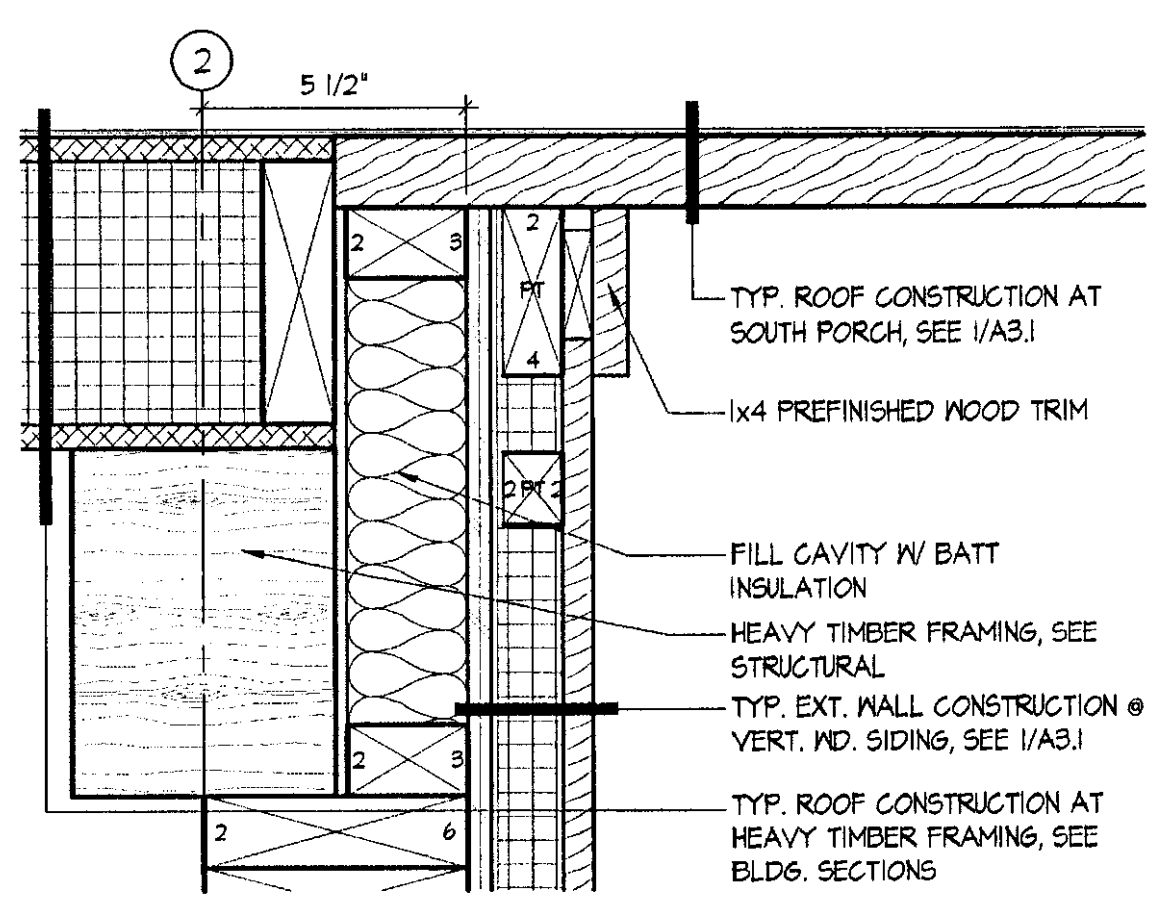


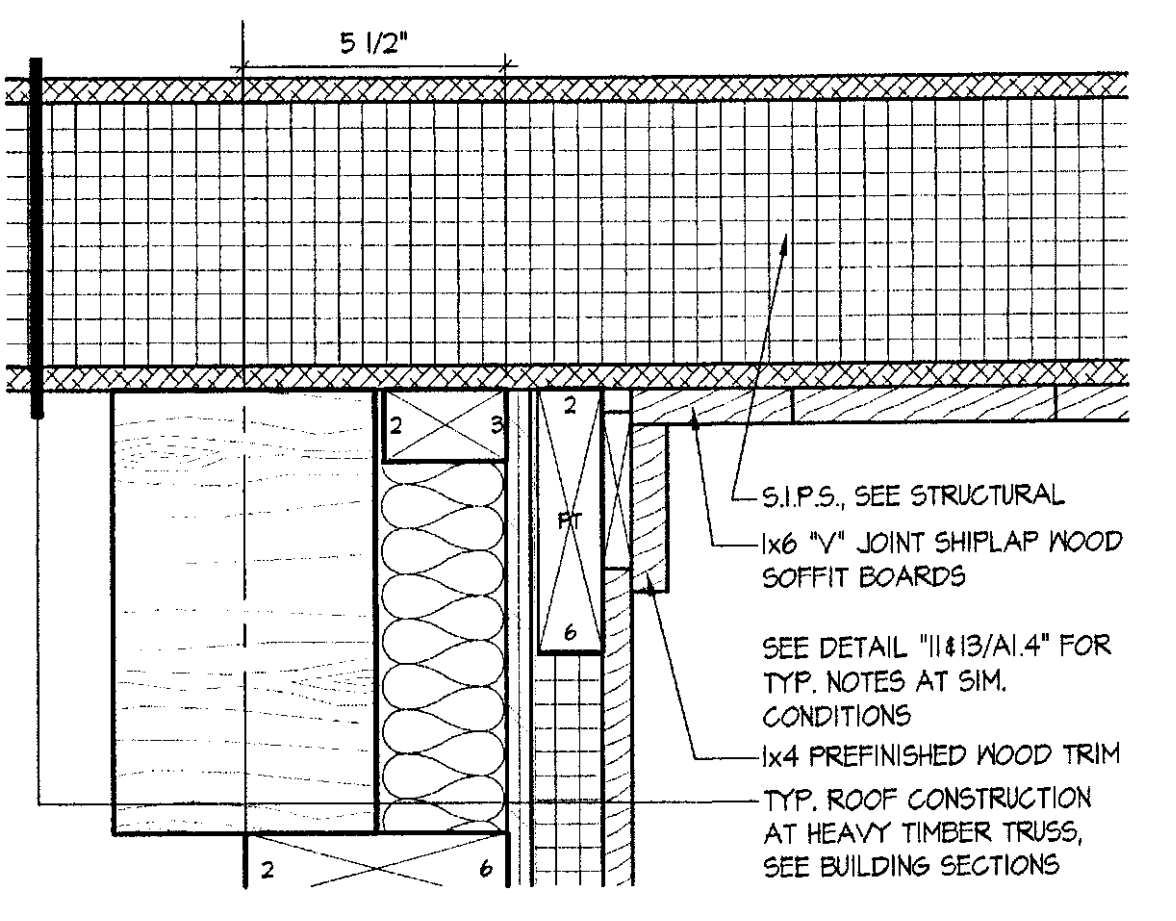
1 WALL TO ROOF TRANSITION DTL.
SCALE: 3" = 1'-0"
2003_B507



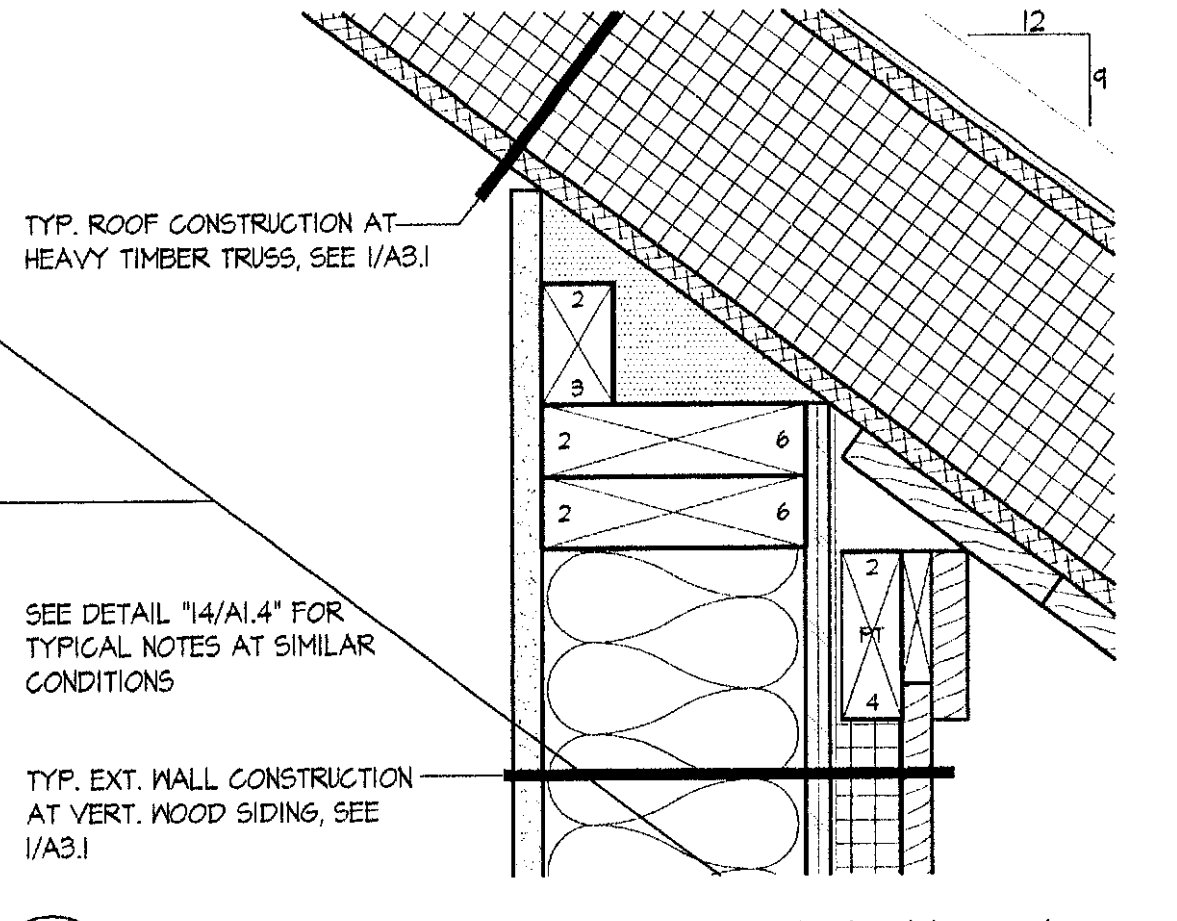
2 WALL TO ROOF TRANSITION DTL.
SCALE: 3" = 1'-0"
2003_B505



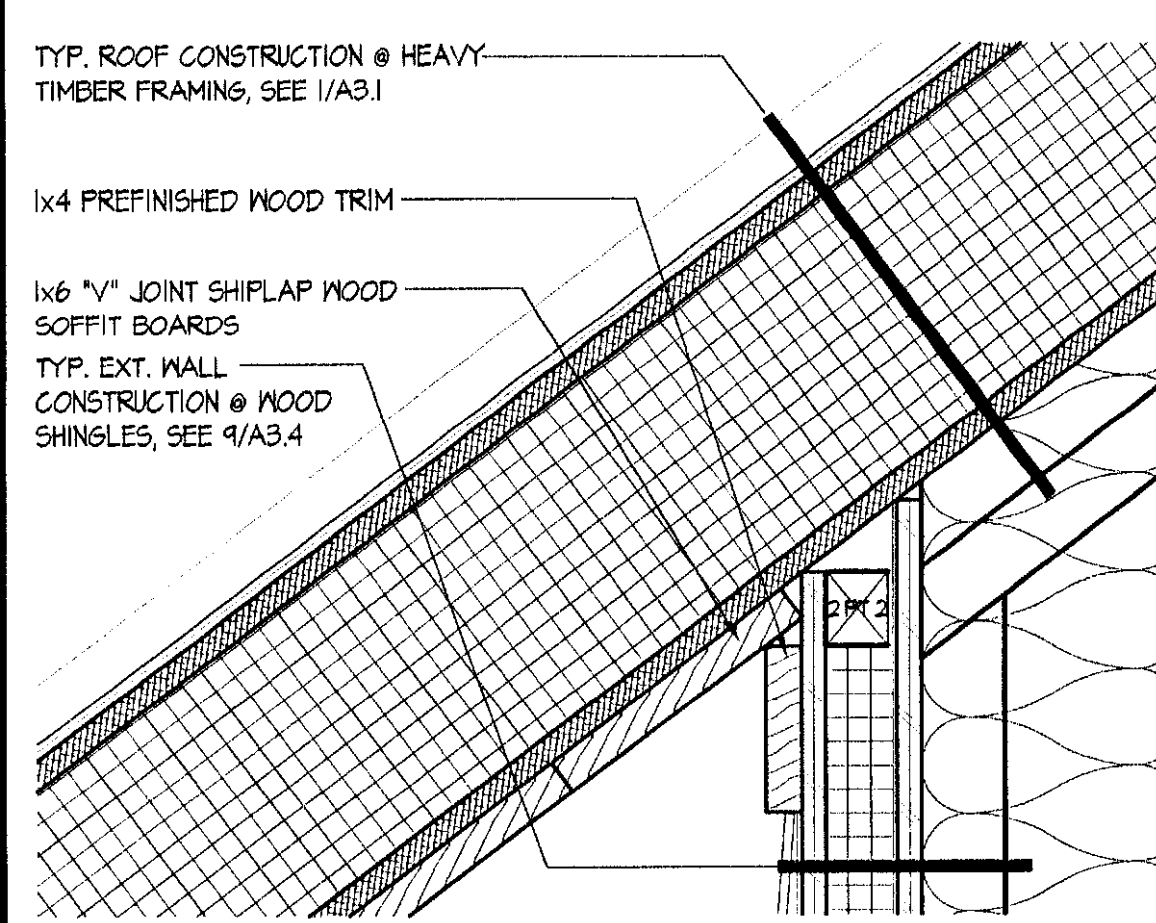
3 WALL TO ROOF TRANSITION DTL.
SCALE: 3" = 1'-0"
2003_B608



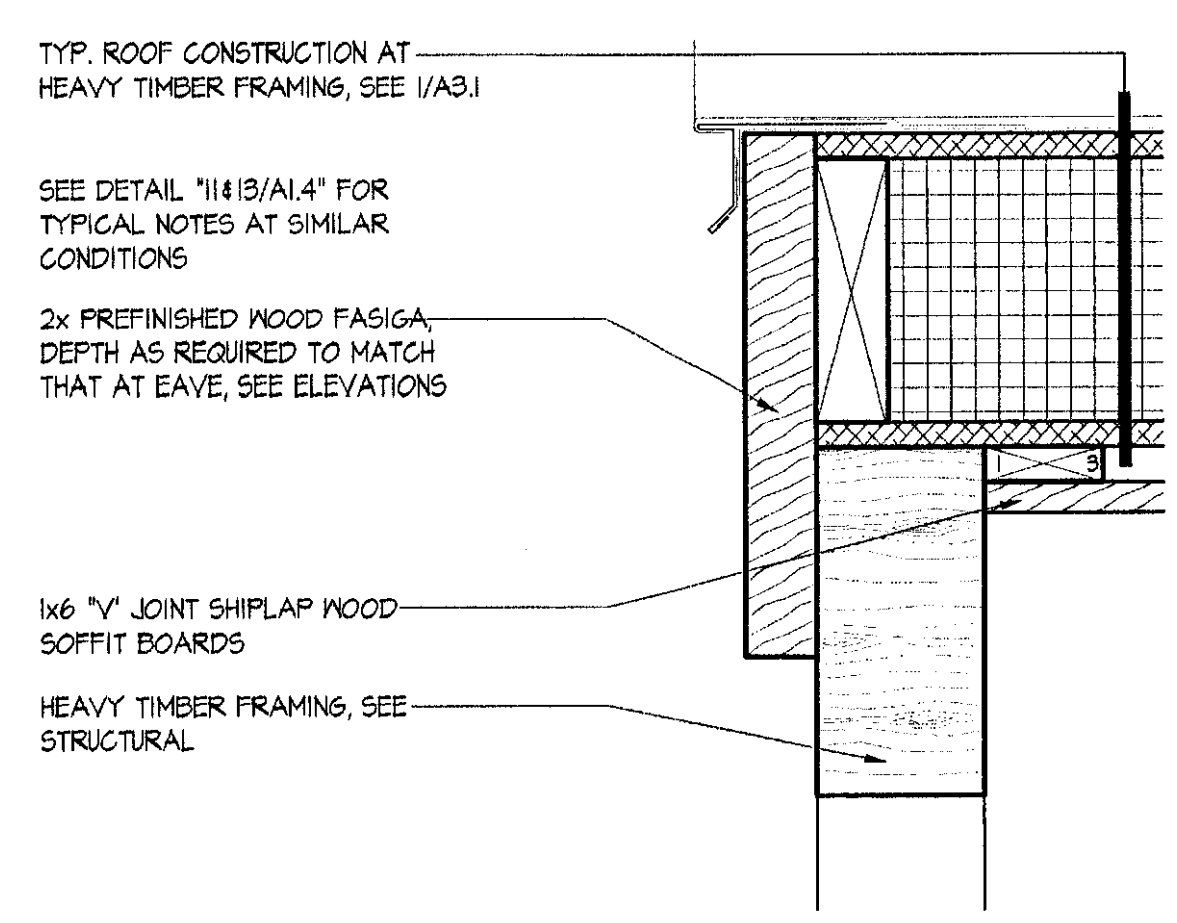
4 WALL TO ROOF TRANSITION DTL.
SCALE: 3" = 1'-0"
2003_B602



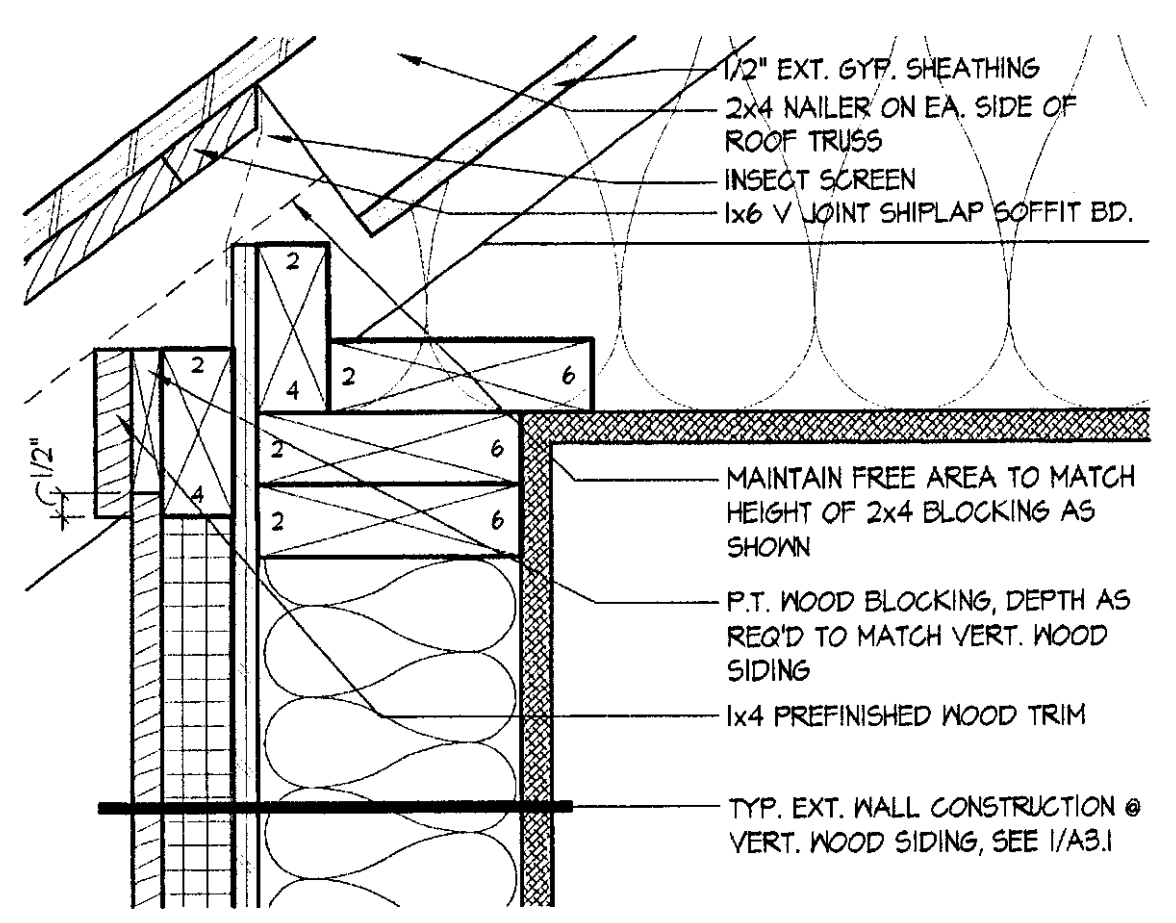
5 WALL TO ROOF TRANSITION DTL.
SCALE: 3" = 1'-0"
2003_B514



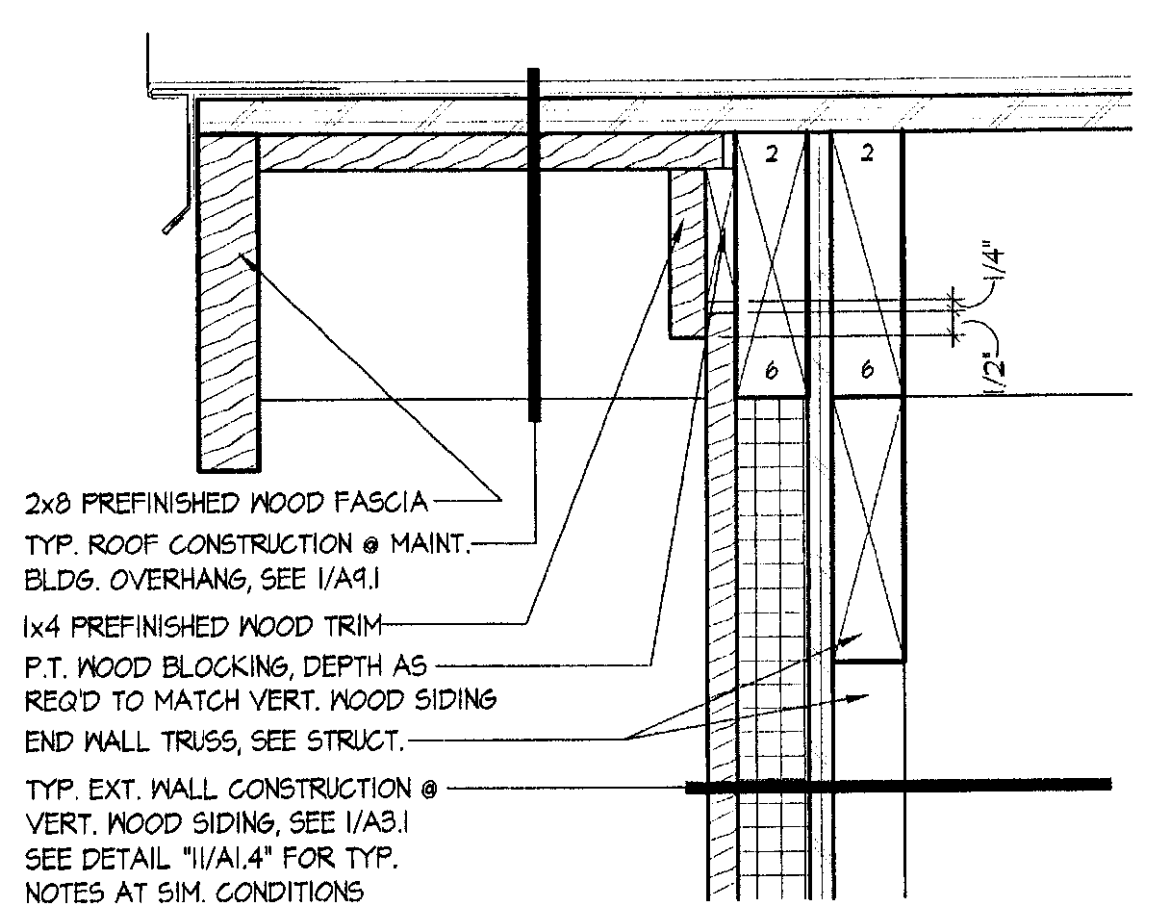
6 WALL TO ROOF TRANSITION DTL.
SCALE: 3" = 1'-0"
2003_B605



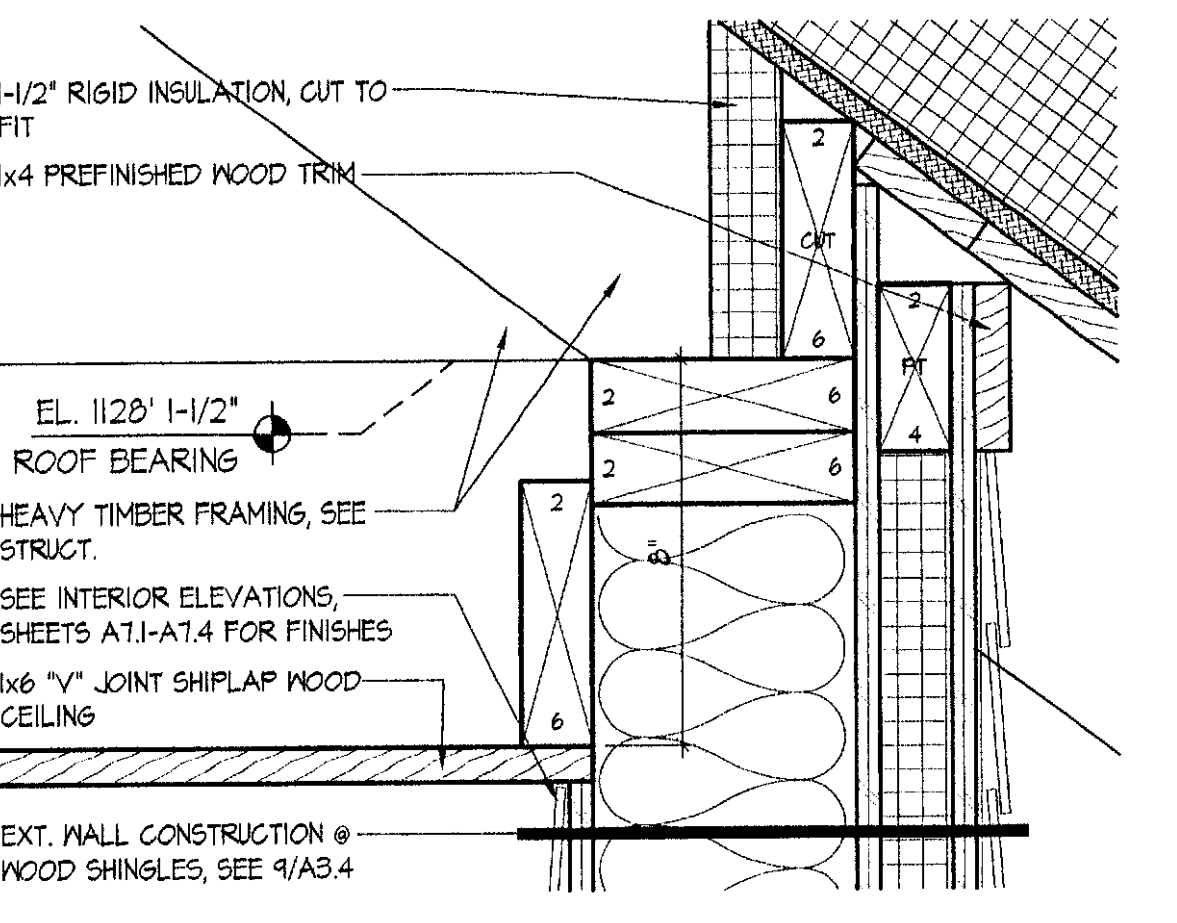
7 RAKE DETAIL @ OFFICE DORMER
SCALE: 3" = 1'-0"
2003_B501



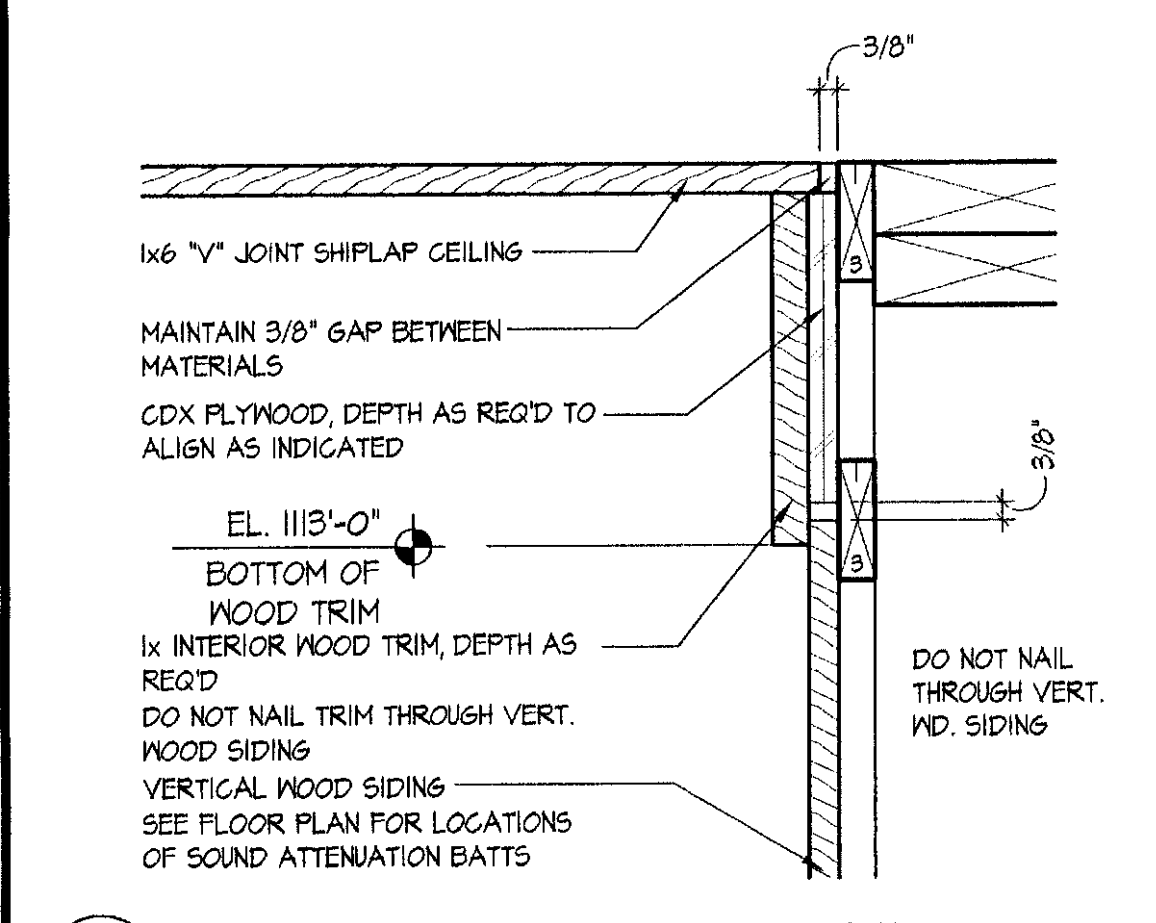
8 WALL TO ROOF TRANSITION DTL.
SCALE: 3" = 1'-0"
2003_B504



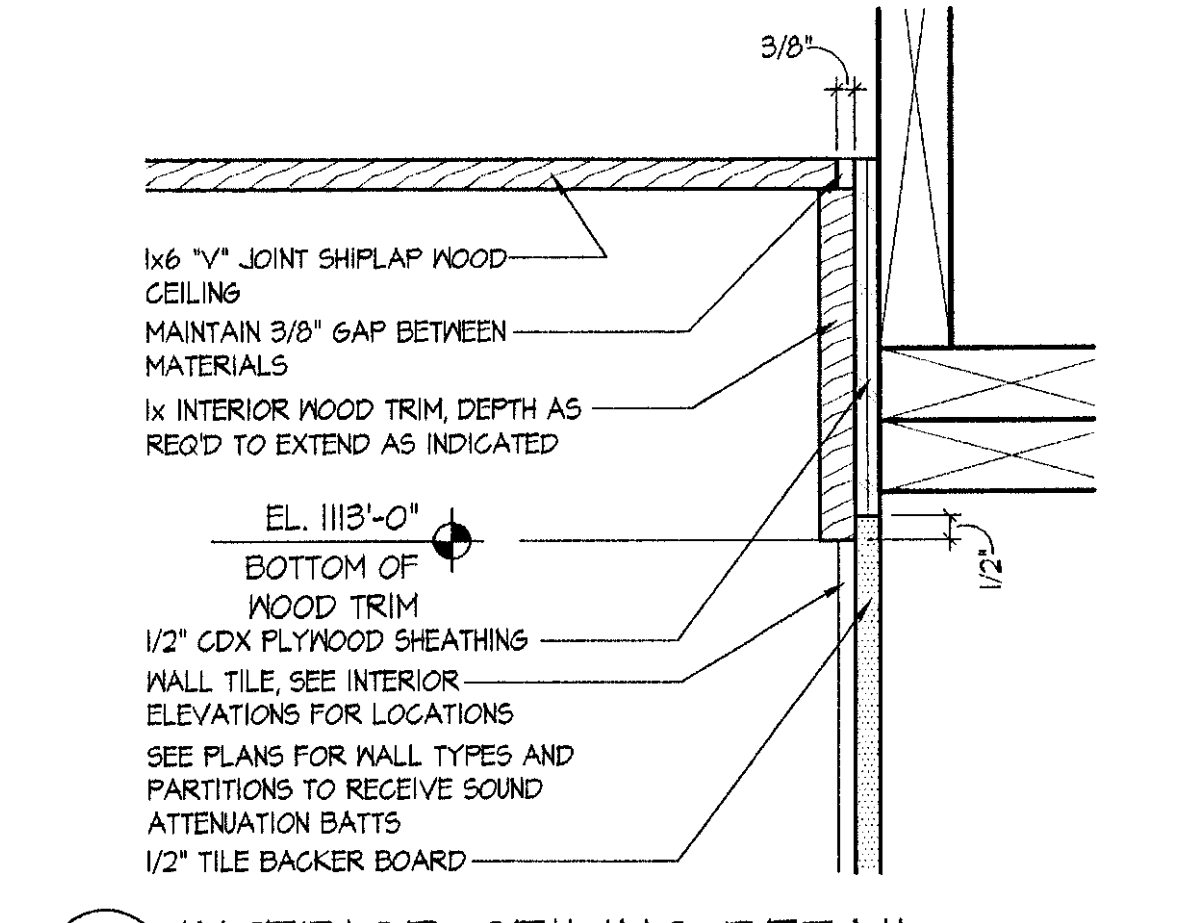
9 RAKE DTL. @ MAINT. BLDG.
SCALE: 3" = 1'-0"
2003_B504A



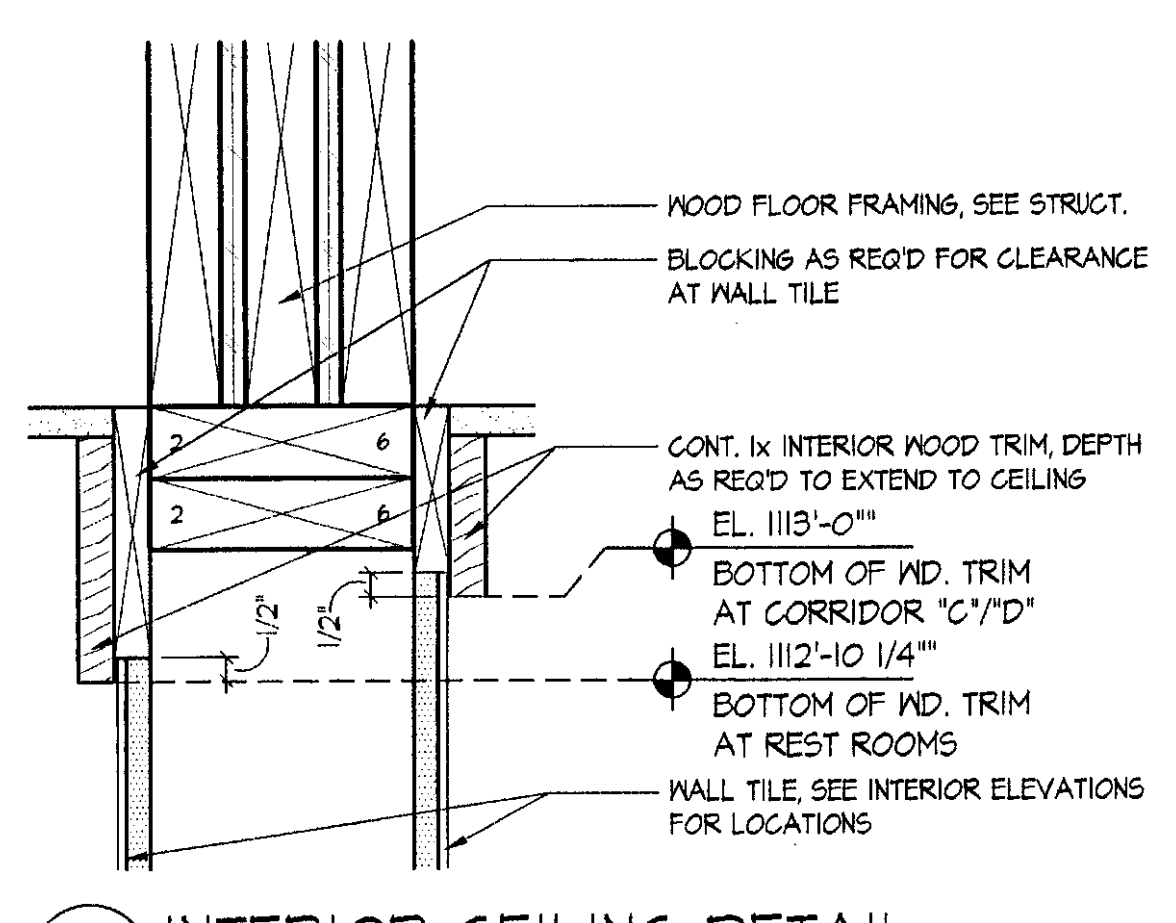
10 WALL TO ROOF TRANSITION DTL.
SCALE: 3" = 1'-0"
2003_B506



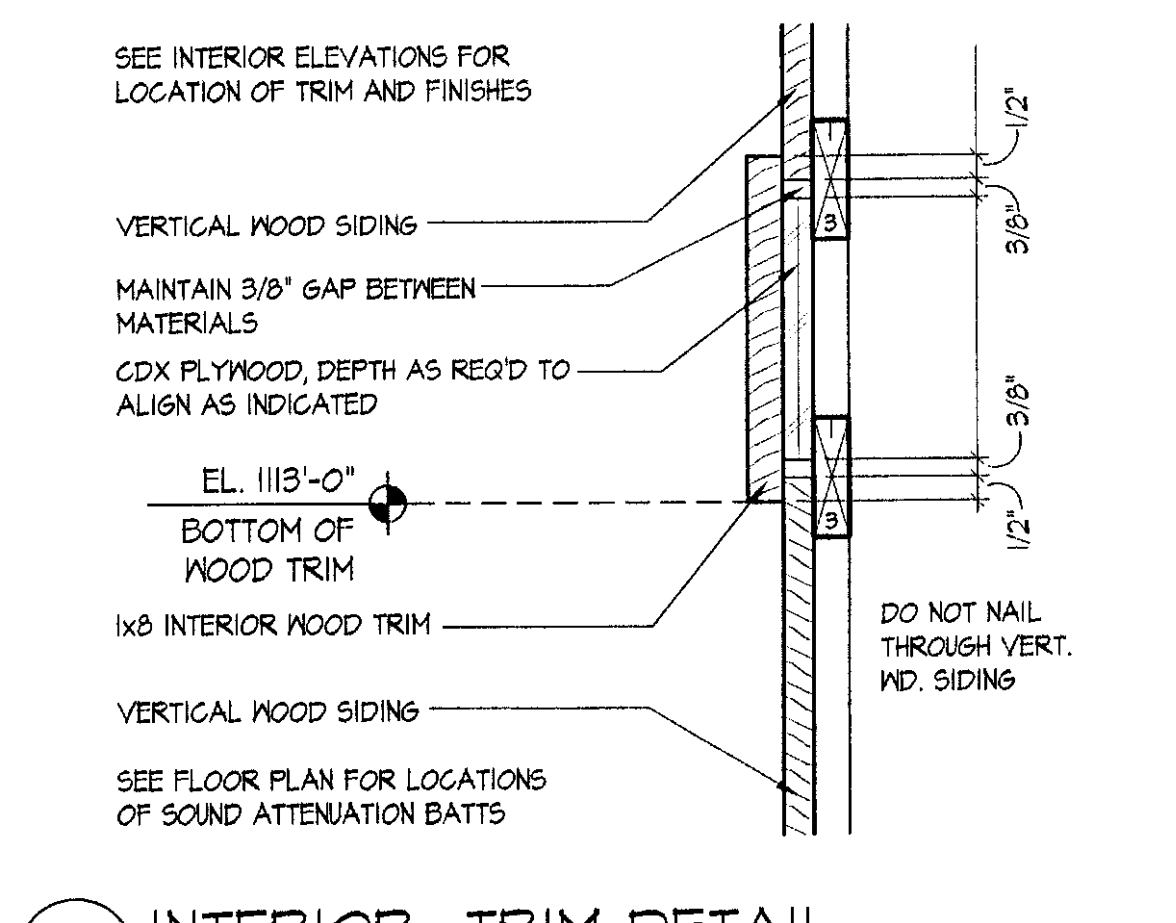
11 INTERIOR CEILING DETAIL
SCALE: 3" = 1'-0"
2003_DTL-INT01



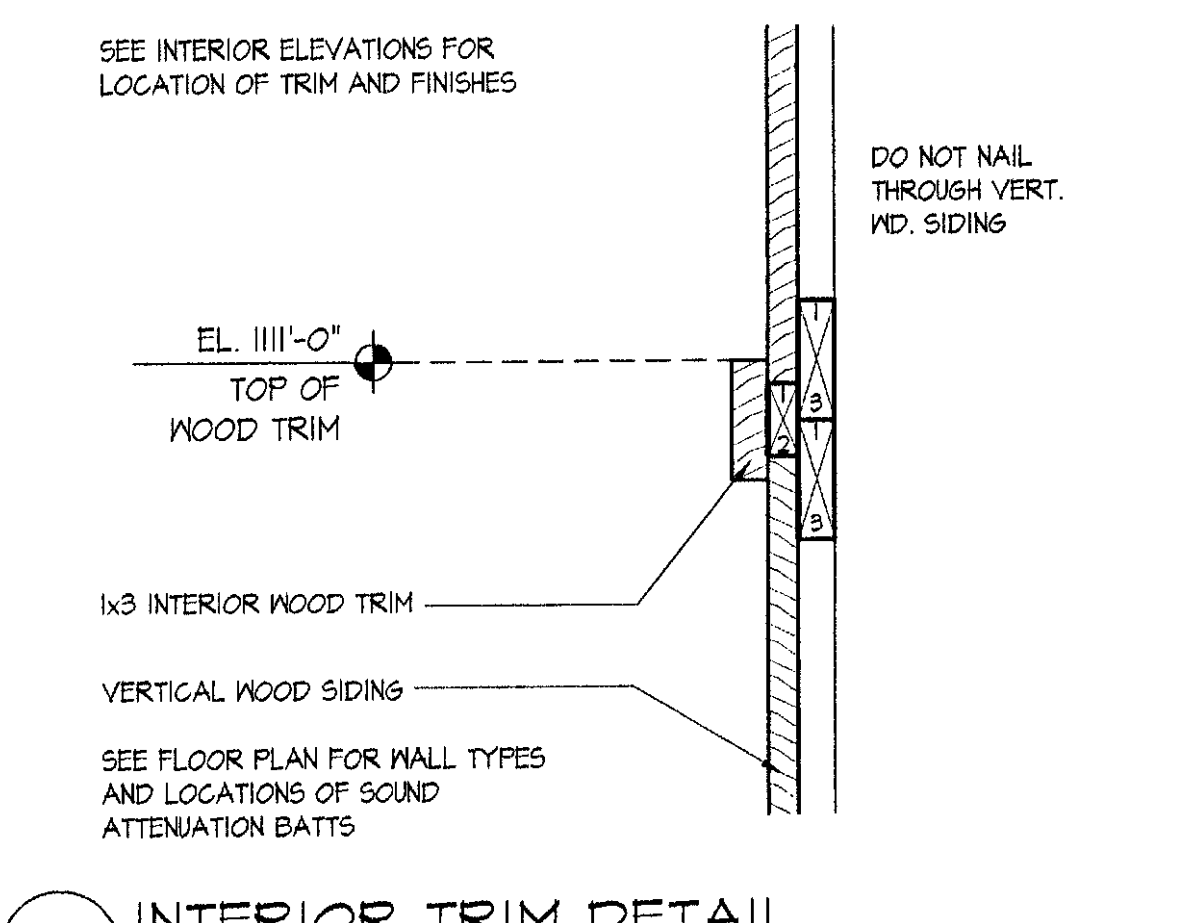
12 INTERIOR CEILING DETAIL
SCALE: 3" = 1'-0"
2003_DTL-INT01



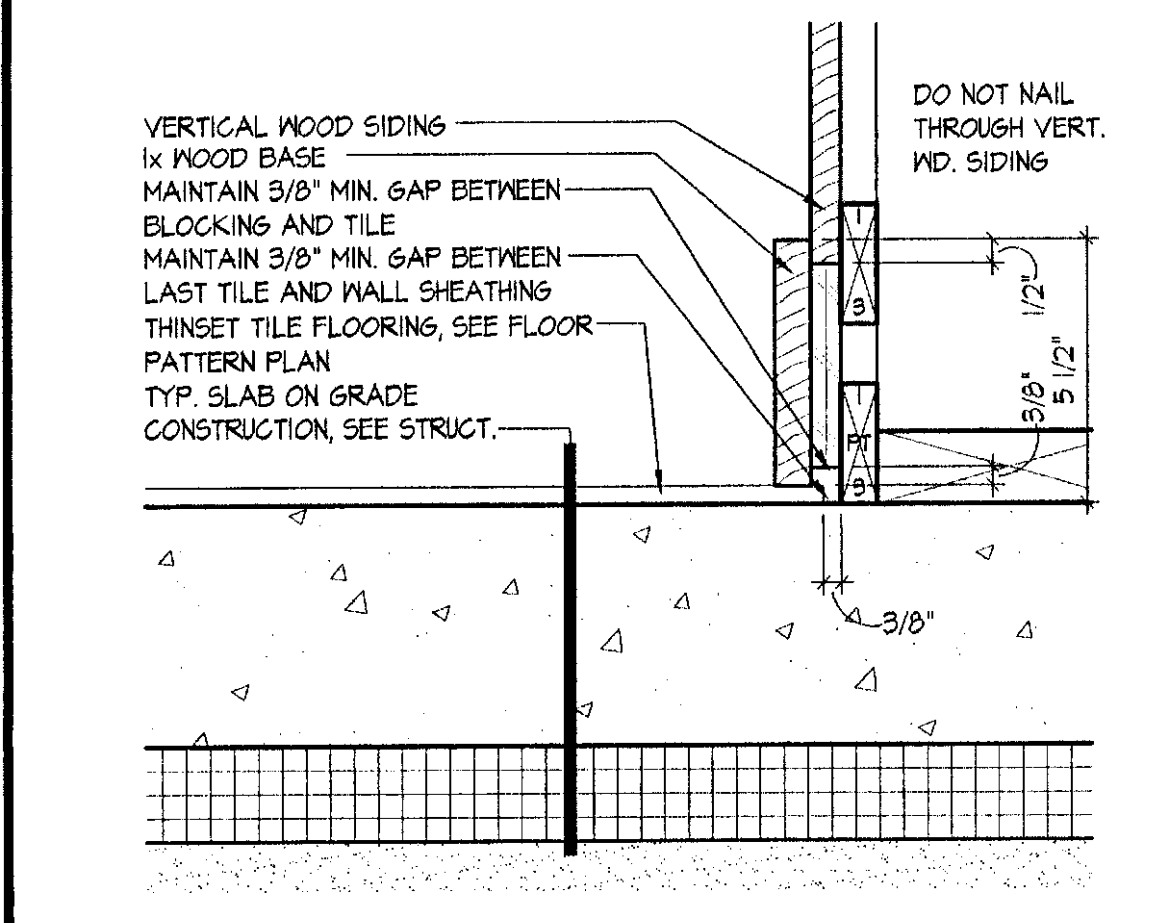
13 INTERIOR CEILING DETAIL
SCALE: 3" = 1'-0"
2003_DTL-INT01



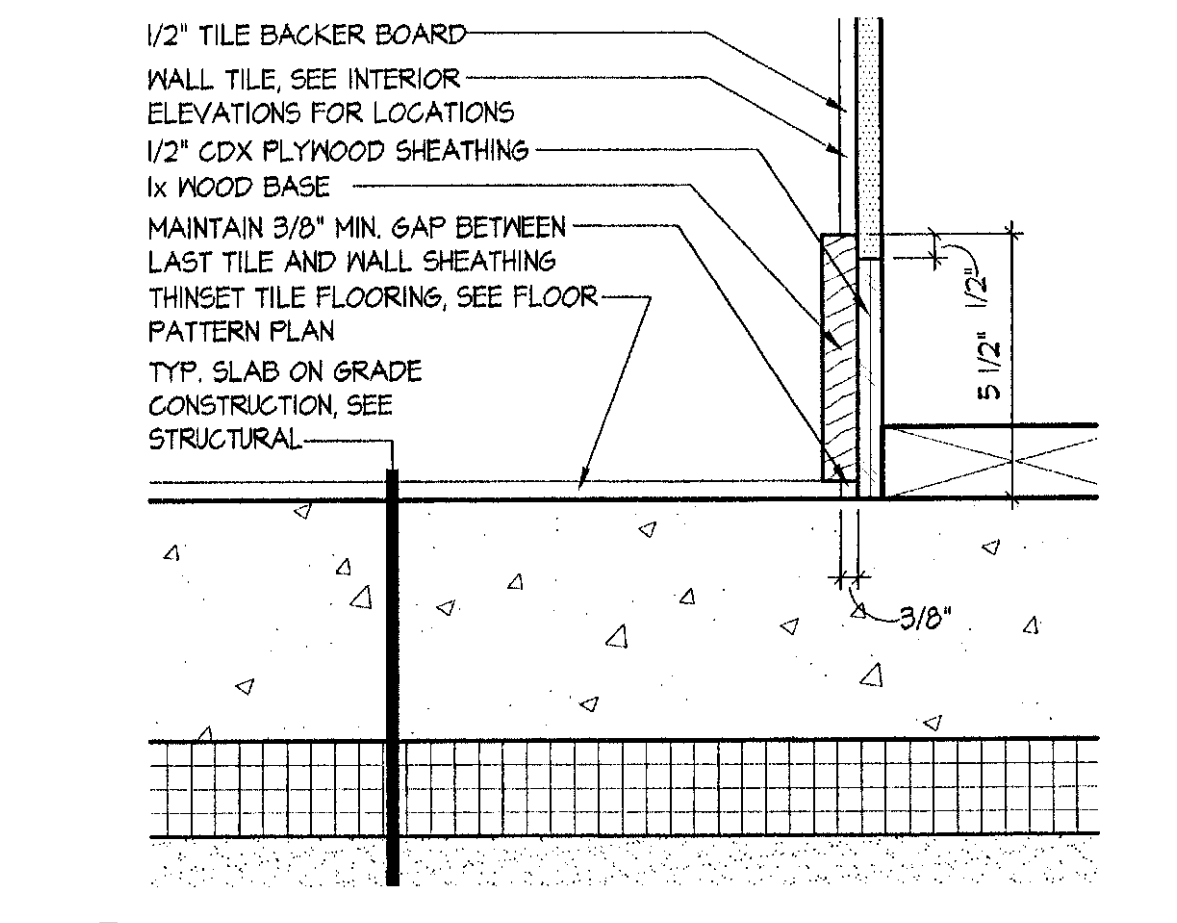
14 INTERIOR TRIM DETAIL
SCALE: 3" = 1'-0"
2003_DTL-INT01



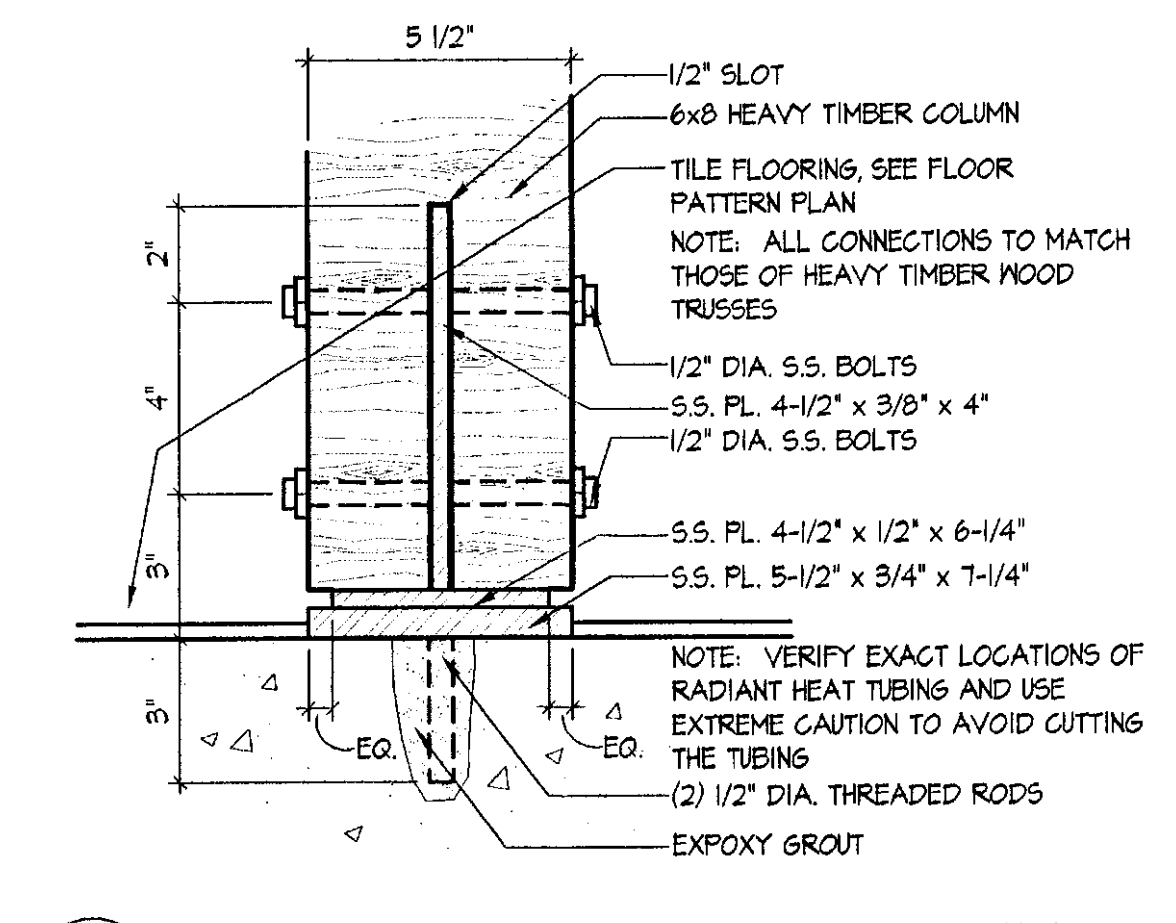
15 INTERIOR TRIM DETAIL
SCALE: 3" = 1'-0"
2003_DTL-INT01



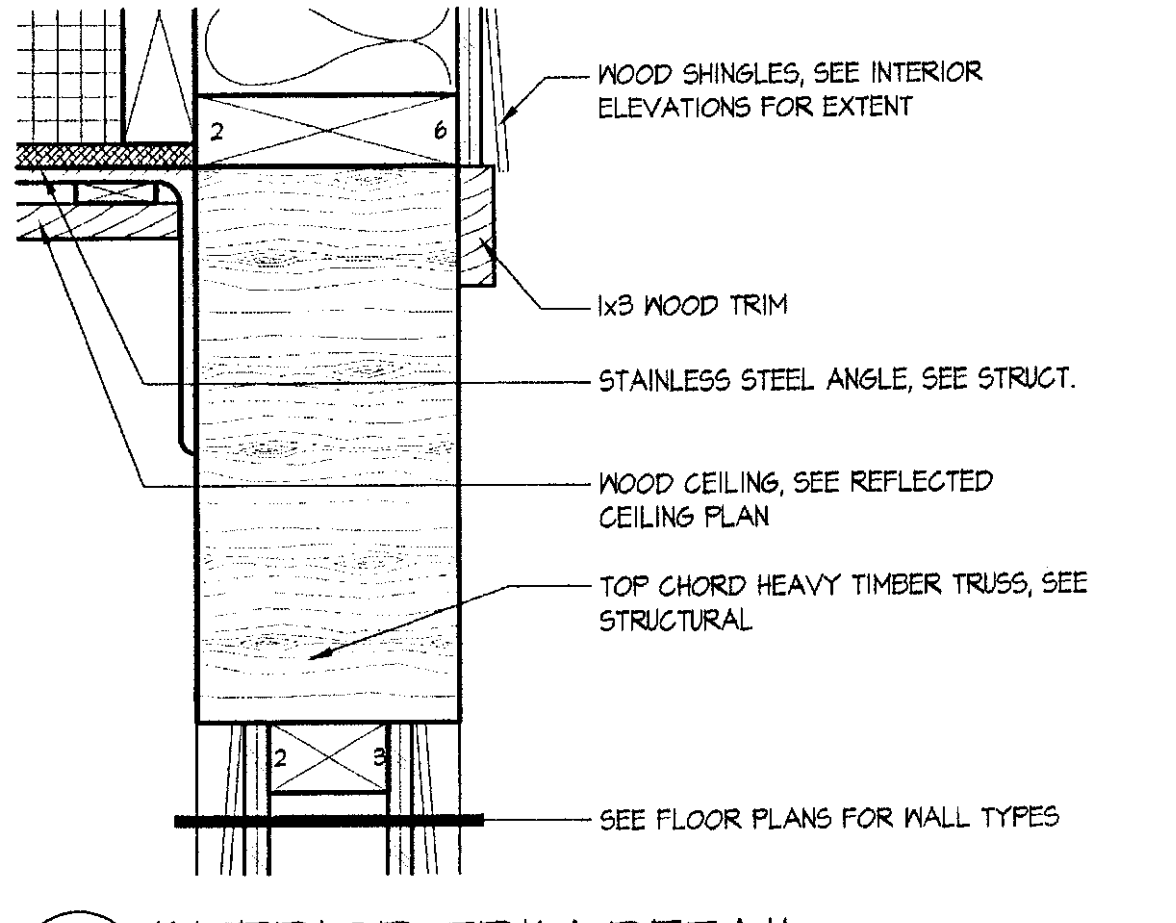
16 INTERIOR BASE DETAIL
SCALE: 3" = 1'-0"
2003_DTL-INT01



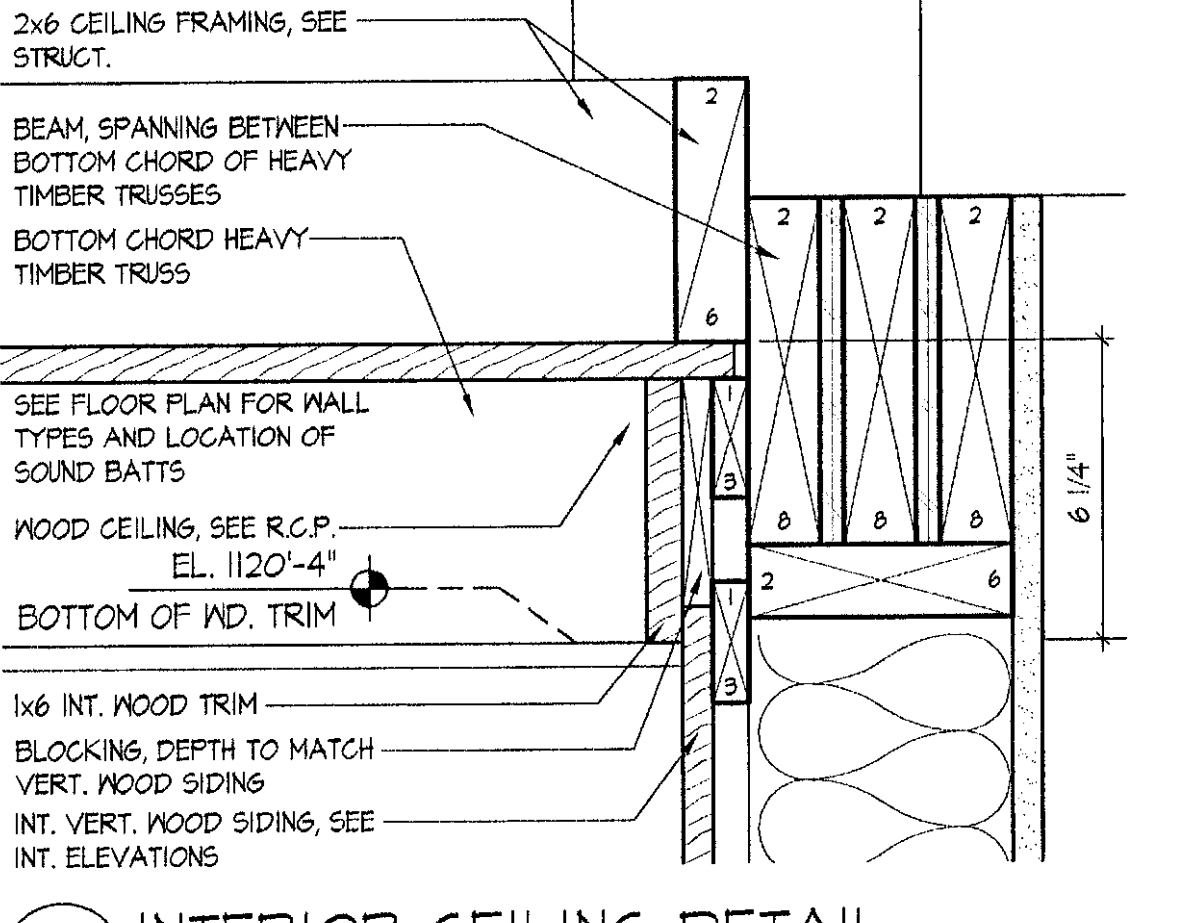
17 INTERIOR BASE DETAIL
SCALE: 3" = 1'-0"
2003_DTL-INT01



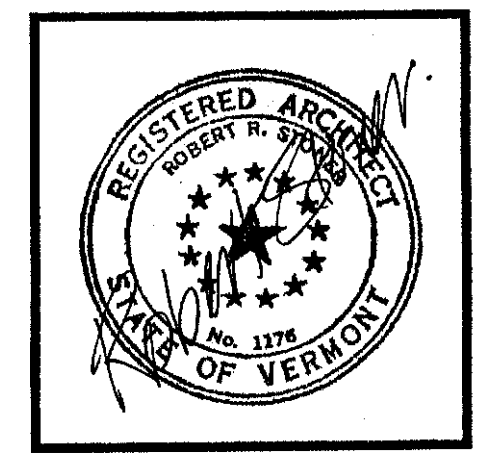
18 H.T. COLUMN BASE DTL. @ TILE
SCALE: 3" = 1'-0"
2003_DTL-INT01



19 INTERIOR TRIM DETAIL
SCALE: 3" = 1'-0"
2003_B506



20 INTERIOR CEILING DETAIL
SCALE: 3" = 1'-0"
2003_B513



NORTHERN ARCHITECTS
207 KING STREET
SUITE 3
BURLINGTON, VERMONT
05401-4502
802-658-1953

CONSULTANTS
CIVIL
KREBS AND LANGING
10 Main Street
Colchester VT 05446
(802)-878-0375
LANDSCAPE ARCHITECT
OHKW
7 Marple Ave.
Burlington VT 05401
(802)-864-0010
STRUCTURAL
RICHARD W. DOWERY, P.E.
117 St. Paul Street
Burlington VT 05401
(802)-660-4212
PLUMBING, MECHANICAL,
AND ELECTRICAL
DUFFRENE AND HENRY
Precision Park
North Springfield VT 05150-0023
(802)-886-2261

REVISIONS

PROJECT
DERBY WELCOME CENTER
PROJECT #10 091-318
NEW FACILITY
DERBY VERMONT

DATE: 01/01/2002
SCALE: AS NOTED
CHECKED: HS
PROJECT NO.: 2003

ROOF AND INTERIOR DETAILS

A1.5

© NORTHERN ARCHITECTS INC. ALL RIGHTS RESERVED 2002