

**NORTHERN ARCHITECTS**  
 207 KING STREET  
 SUITE 3  
 BURLINGTON, VERMONT  
 05401-4502  
 802-658-1953

CONSULTANTS  
 CIVIL  
 KREBS AND LANSING  
 10 Main Street  
 Colchester VT 05446  
 (802)-876-0375  
 LANDSCAPE ARCHITECT  
**OHKW**  
 OFFICE OF ORVILLE KEITH WADSWORTH  
 7 Marble Ave.  
 Burlington VT 05401  
 (802)-864-0010  
 STRUCTURAL  
 RICHARD M. DOHERTY, P.E.  
 117 St. Paul Street  
 Burlington VT 05401  
 (802)-660-4212  
 PLUMBING, MECHANICAL  
 AND ELECTRICAL  
 DUPRESNE AND HENRY  
 Precision Park  
 North Springfield VT 05150-0024  
 (802)-886-2261

REVISIONS

PROJECT

**DERBY WELCOME CENTER**  
 PROJECT #IM 091-3(8)

NEW FACILITY

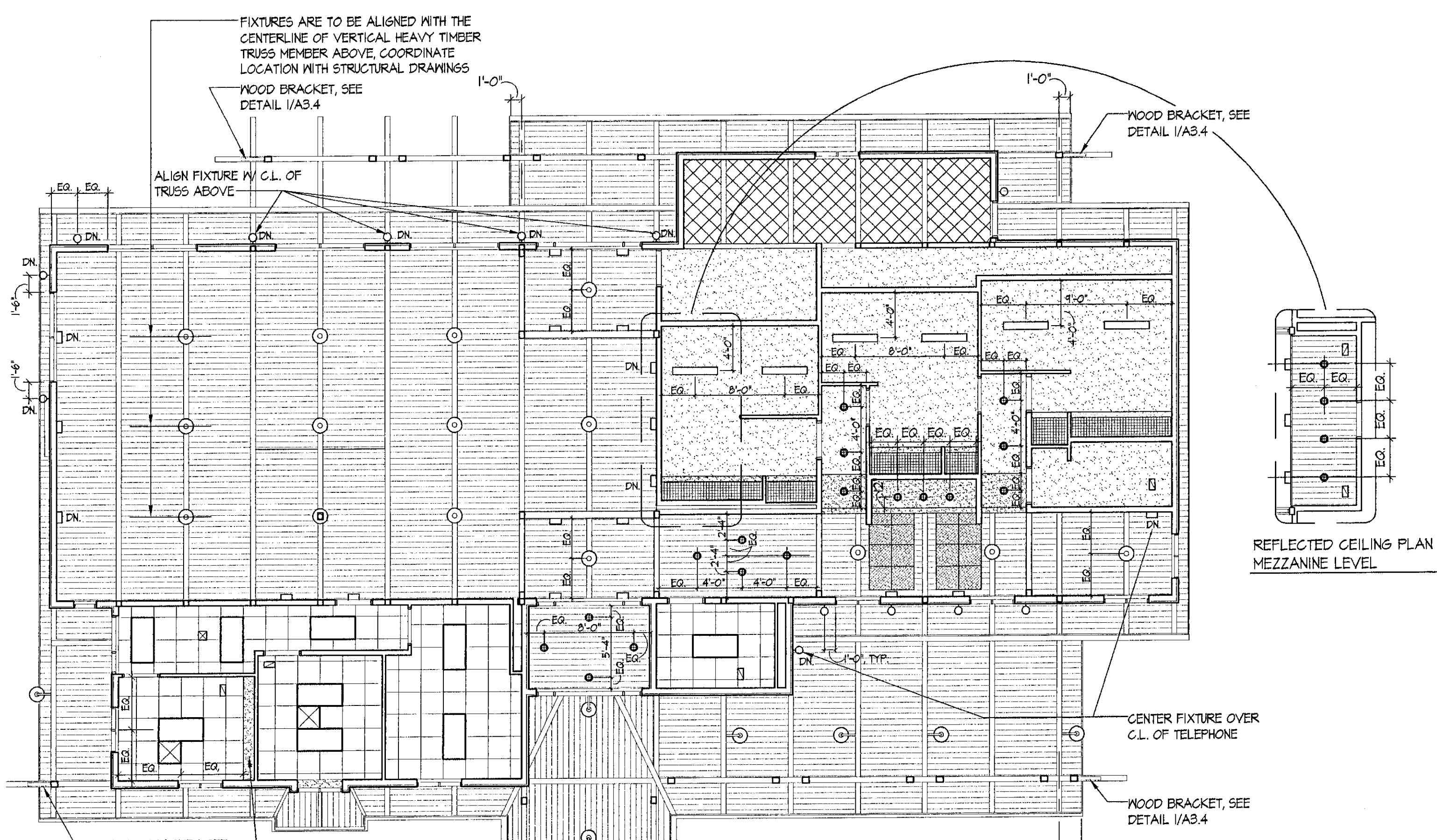
DERBY VERMONT

DATE: 01/07/2002  
 SCALE: AS NOTED  
 CHECKED: HS  
 PROJECT NO: 2003

**REFLECTED CEILING AND FLOOR PATTERN PLANS**

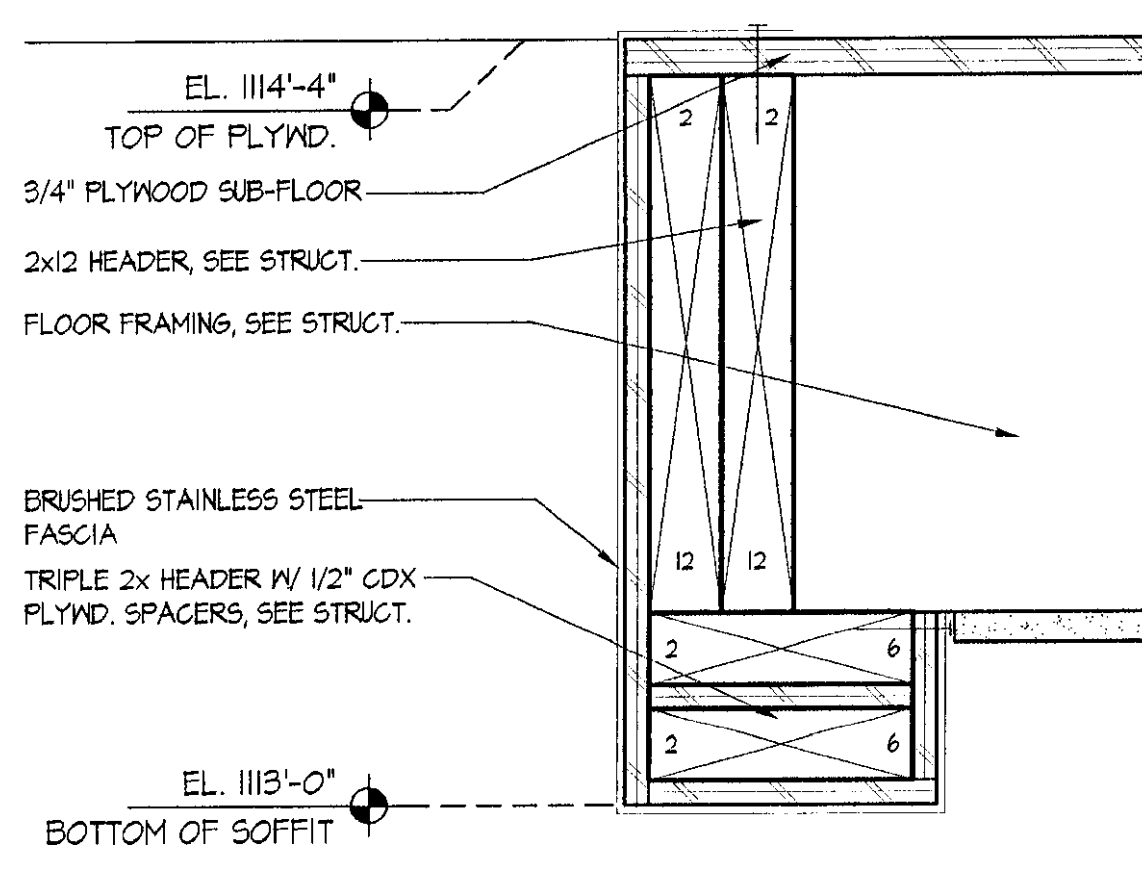
**A1.3**

© NORTHERN ARCHITECTS INC. ALL RIGHTS RESERVED 2002

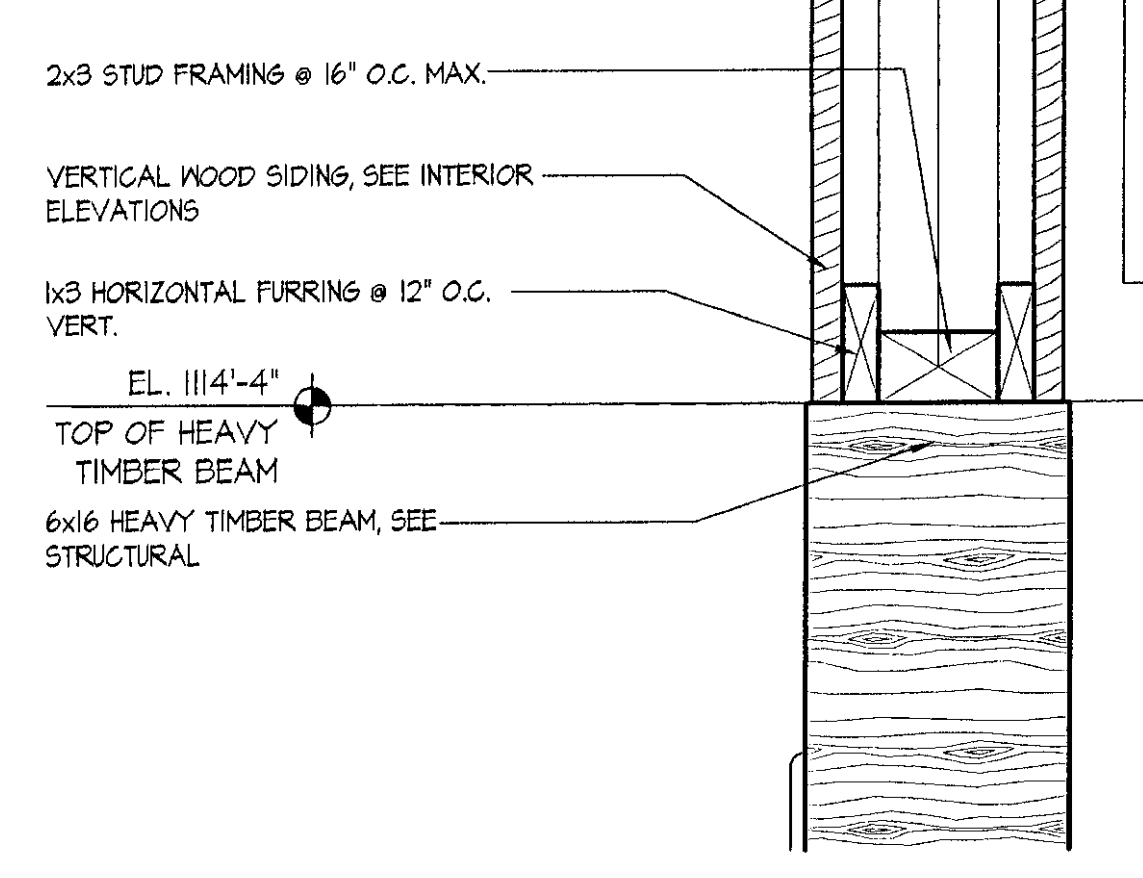


- REFLECTED CEILING PLAN NOTES:**
- COORDINATE THIS DRAWING WITH ALL REQUIREMENTS AS SET FORTH BY THE ELECTRICAL AND MECHANICAL DRAWINGS. IN THE CASE OF A CONFLICT NOTIFY ARCHITECT IMMEDIATELY PRIOR TO COMMENCEMENT OF ANY OF THE AFFECTED WORK.
  - SEE FINISH SCHEDULE FOR HEIGHTS OF ALL CEILINGS DEPICTED HEREIN
  - DIMENSIONS ARE TYPICAL FOR ALL SIMILAR CONDITIONS
  - DIMENSIONS TO FIXTURES ARE TO THE CENTERLINE OF THAT FIXTURE UNLESS OTHERWISE NOTED.
  - IF NOT LOCATED OTHERWISE, FIXTURES ARE TO BE CENTERED WITHIN THE ROOM OR CEILING SPACE (BETWEEN SOFFITS, BETWEEN SOFFITS AND WALLS, ETC.)
- REFLECTED CEILING PLAN MATERIAL LEGEND:**
- EGGCRATE DIFFUSER
  - UNDERSIDE OF STRUCTURAL DECKING, OR 1x6 V JOINT SHIPLAP, TRANSPARENT FINISH SEE SECTIONS FOR SPECIFIC LOCATIONS
  - 6"NB. CEILING, SEE FINISH SCHED. FOR LOCATIONS OF HIGH IMPACT BOARD
  - 6"NB. SOFFIT, LOCATE AS PER SECTIONS, SEE FINISH SCHED. FOR LOCATIONS OF HIGH IMPACT BOARDS
  - PERFORATED METAL CEILING PANELS IN SUPPORTING METAL GRID
  - SUSPENDED ACOUSTICAL PANEL CEILING
  - UNDERSIDE OF S.I.P.
- REFLECTED CEILING PLAN LIGHTING LEGEND:**
- PENDANT MOUNTED FIXTURE, SEE ELECTRICAL DWG'S FOR TYPES
  - ARM MOUNTED FIXTURE ON HEAVY TIMBER TRUSS OR FRAMING, SEE ELECTRICAL DWG'S FOR TYPES
  - INTERIOR SCONCE, MOUNT AS UP LIGHT, UNLESS NOTED AS "DN". SEE INTERIOR ELEVATIONS FOR LOCATION AND ELECTRICAL DWG'S FOR TYPES
  - RECESSED CEILING LUMINAIRE, SEE ELECTRICAL DWG'S FOR TYPES
  - WALL MOUNTED EXTERIOR FIXTURE, MOUNT AS UP LIGHT UNLESS NOTED "DN", SEE EXTERIOR ELEVATIONS FOR LOCATIONS, AND ELECTRICAL DWG'S FOR TYPES
  - RECESSED INTERIOR FIXTURE, SEE ELECTRICAL DWG'S FOR TYPES

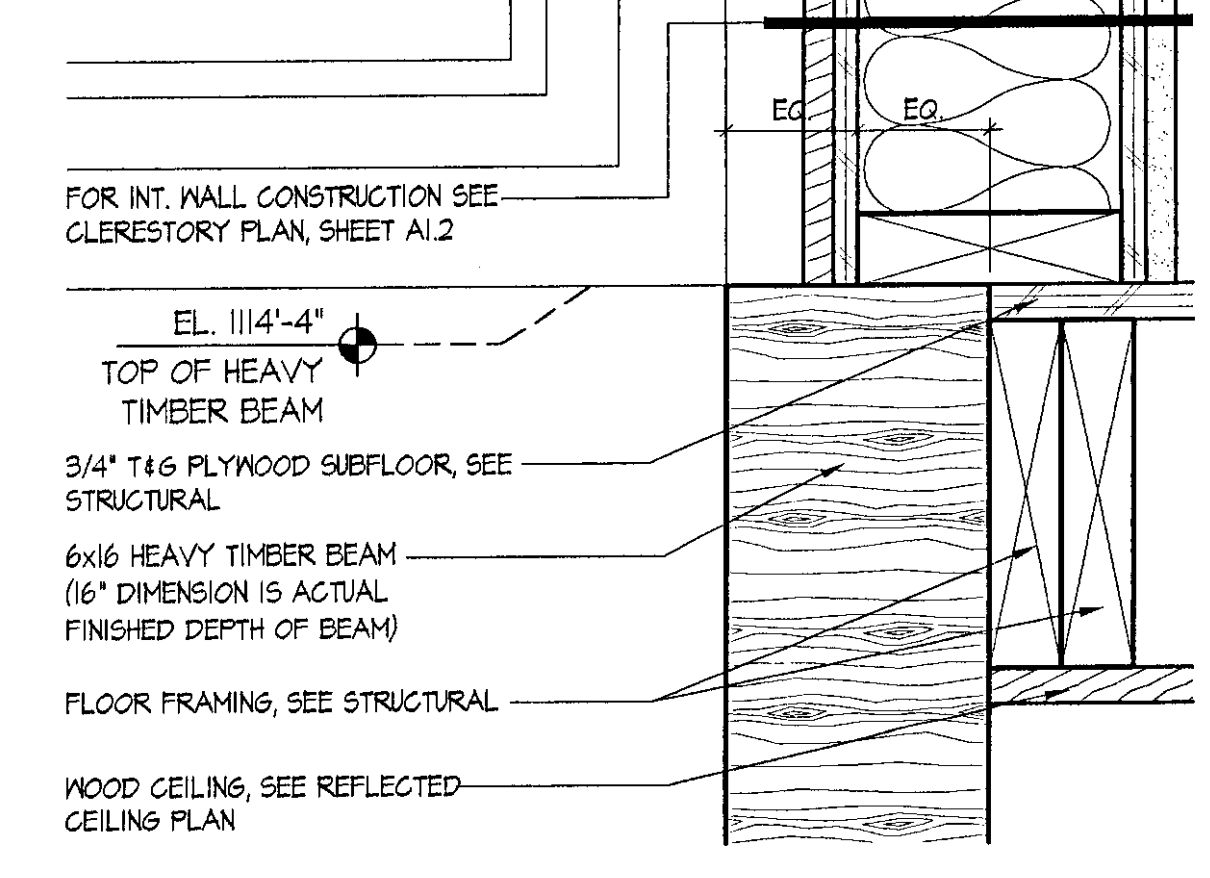
**REFLECTED CEILING PLAN**  
 SCALE: 1/8" = 1'-0"  
 2003\_FF01



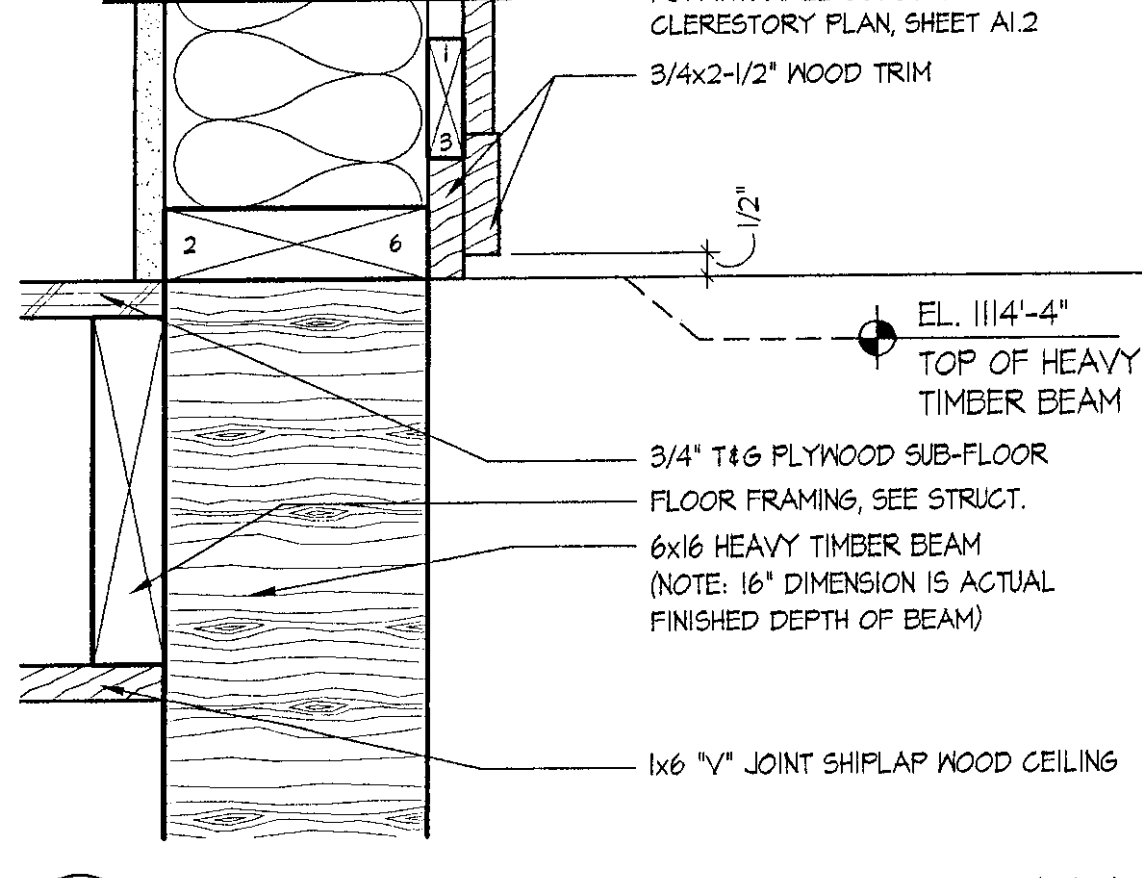
**1 FASCIA DETAIL @ VENDING**  
 SCALE: 3" = 1'-0"  
 2003\_B504



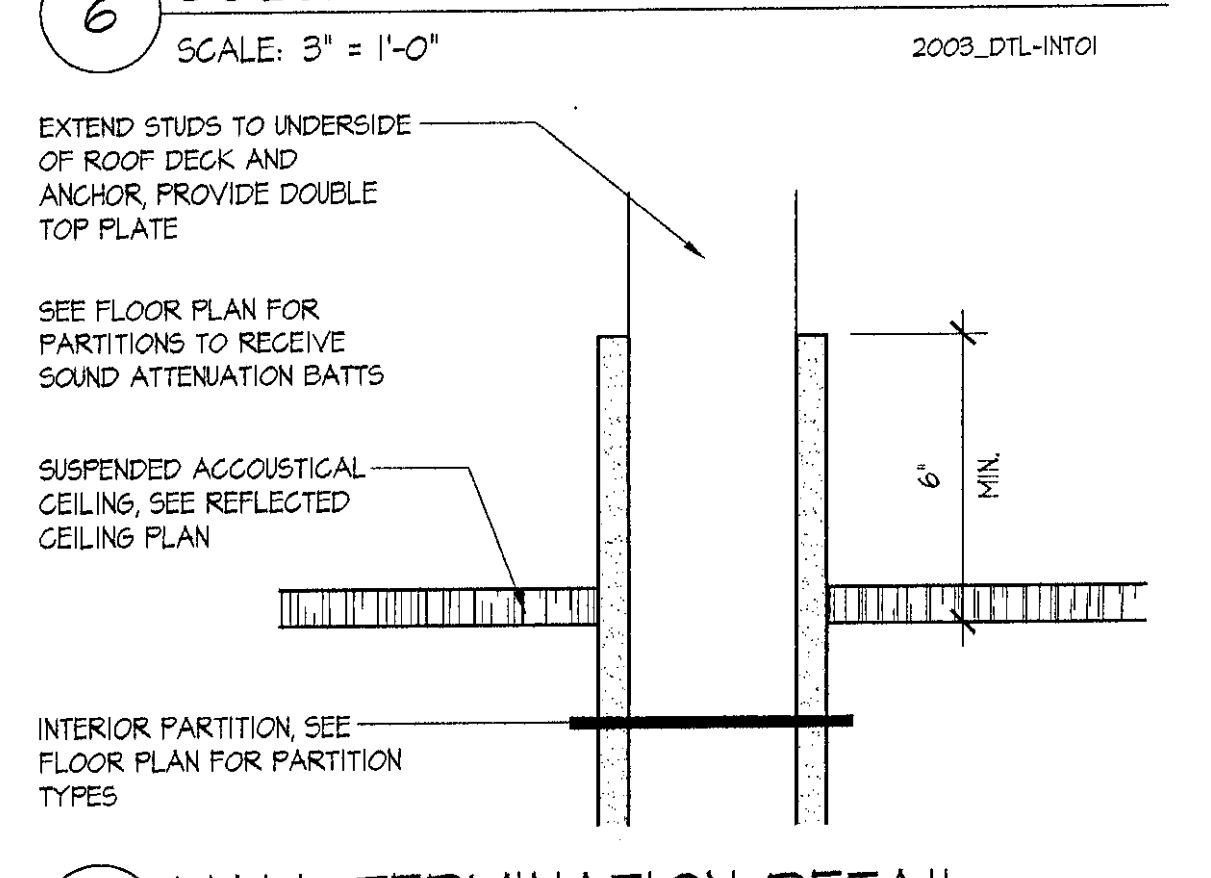
**2 DETAIL AT HEAVY TIMBER SOFFIT**  
 SCALE: 3" = 1'-0"  
 2003\_B506



**3 DETAIL AT HEAVY TIMBER SOFFIT**  
 SCALE: 3" = 1'-0"  
 2003\_B506

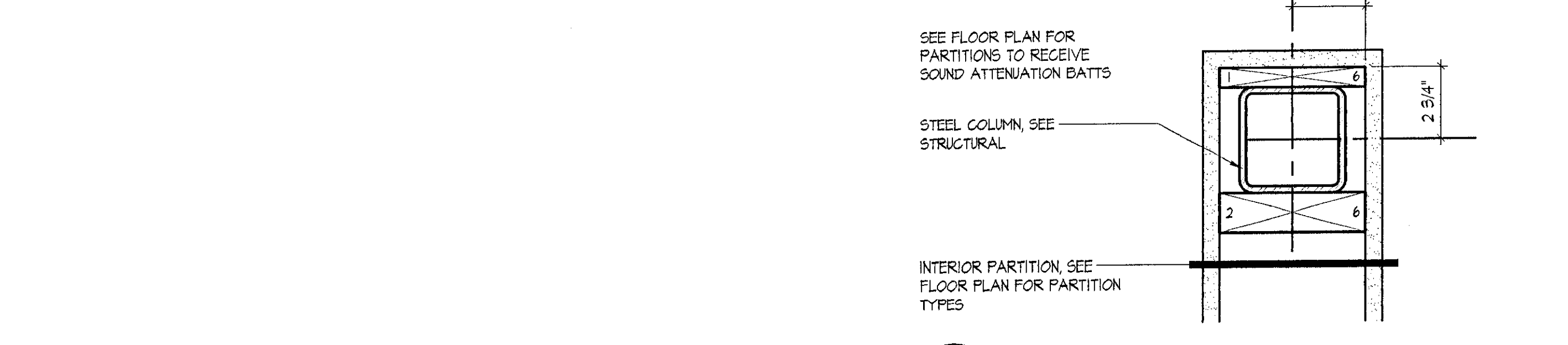


**4 DETAIL AT HEAVY TIMBER SOFFIT**  
 SCALE: 3" = 1'-0"  
 2003\_B506

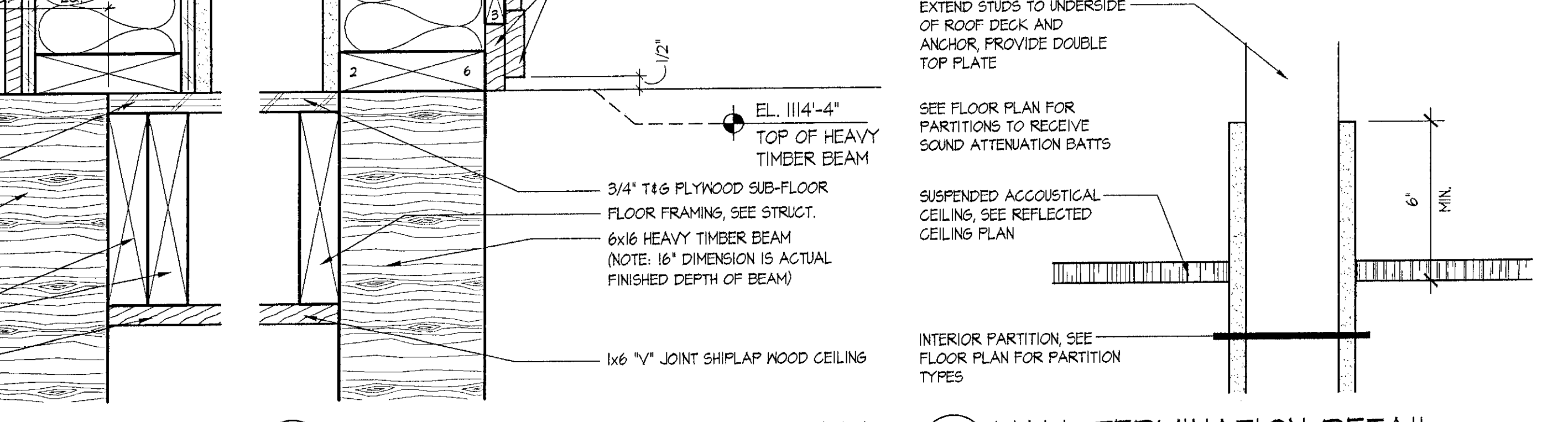


**5 WALL TERMINATION DETAIL**  
 SCALE: 3" = 1'-0"  
 2003\_DTL-INT01

**FLOOR PATTERN PLAN**  
 SCALE: 1/8" = 1'-0"  
 2003\_FF01



**6 COLUMN DETAIL**  
 SCALE: 3" = 1'-0"  
 2003\_DTL-INT01



**FLOOR PATTERN PLAN LEGEND**