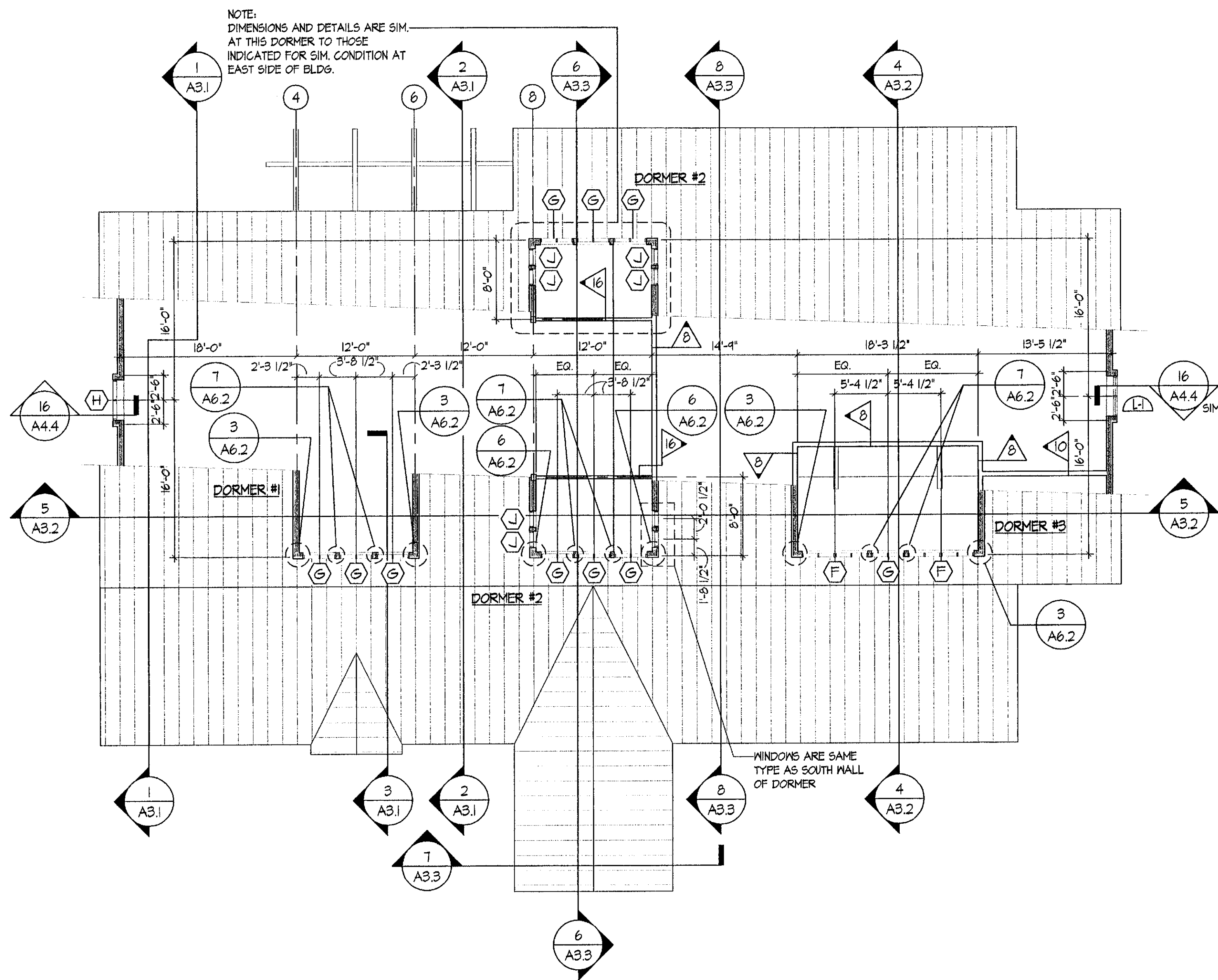


**ATTIC/CLERESTORY PLAN**  
SCALE: 1/8" = 1'-0"  
2003\_FF01

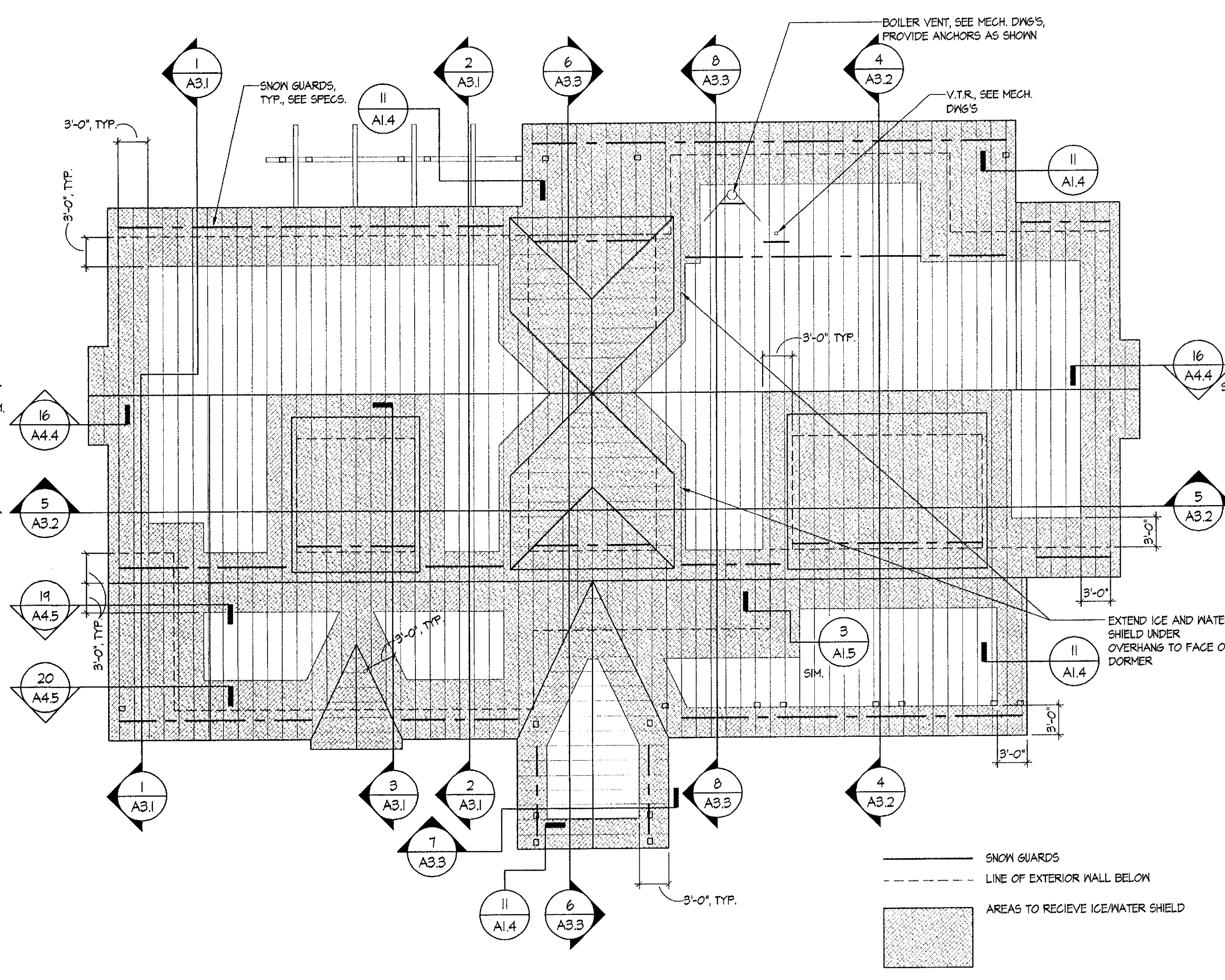
**ROOM FINISH SCHEDULE**

No.	ROOM NAME	FLOORS		WALLS				CEILING		REMARKS
		FINISH	BASE	NORTH	SOUTH	EAST	WEST	FINISH	HT.	
100	VESTIBULE	MAT.CT.	---	WOODSTONE	WOODSTONE	ALUM SF	ALUM SF	WOOD	9'-0"	NOTE #3, #4
101	EXHIBIT	CT/WOOD	WD	WOOD	WOOD	WOOD	WOOD	WOOD	VARIES	NOTE #3, #4
102	CORRIDOR 'A'	VCT	RUBBER	PAINTED GWB	PAINTED GWB	PAINTED GWB	PAINTED GWB	ACT	8'-4"	
103	STORAGE	VCT	RUBBER	PAINTED GWB	PAINTED GWB	PAINTED GWB	PAINTED GWB	ACT	8'-4"	
104	OFFICE	VCT	RUBBER	PAINTED GWB	PAINTED GWB	PAINTED GWB	PAINTED GWB	ACT	8'-1"	
105	STAFF	VCT	RUBBER	PAINTED GWB	PAINTED GWB	PAINTED GWB	PAINTED GWB	ACT	8'-4"	
106	CORRIDOR 'B'	CT	WD	WOOD	---	WOOD	CT	WOOD/MTL GRID & PANEL	VARIES	NOTE #3, #4, #5
107	VENDING	CT	WD	E.I.F.S.	E.I.F.S.	---	CT	PAINTED C.W.B.	VARIES	NOTE #3, #5, #7
108	FAMILY RESTROOM	CT	CT	CT	CT	CT	CT	ACT	8'-3" +/-	NOTE #3, #6
109	WOMENS RESTROOM	CT	CT	CT	CT	CT	CT	PAINTED GWB	8'-3" +/-	NOTE #3, #7
110	CORRIDOR 'C'	CT	WD	E.I.F.S.	CT	---	CT	PAINTED GWB	8'-3" +/-	NOTE #3, #7
111	FLEX RESTROOM	CT	CT	CT	CT	CT	CT	PAINTED GWB	8'-3" +/-	NOTE #3, #7
112	CORRIDOR 'D'	CT	WD	CT	E.I.F.S.	---	CT	PAINTED GWB	8'-3" +/-	NOTE #3, #7
113	MENS RESTROOM	CT	CT	CT	CT	CT	CT	PAINTED GWB	8'-3" +/-	NOTE #3, #7
114	JANITOR	VCT	RUBBER	PAINTED GWB	PAINTED GWB	PAINTED GWB	PAINTED GWB	PAINTED GWB	8'-3" +/-	NOTE #8
115	MECHANICAL/ELECTRICAL	CONC.	---	PAINTED GWB	PAINTED GWB	PAINTED GWB	PAINTED GWB	PAINTED GWB	VARIES	NOTE #8
116	PLUMBING CHASE	CONC.	---	GWB	GWB	GWB	GWB	GWB	8'-3" +/-	NOTE #8
200	UPPER EXHIBIT	PLYWOOD	WOOD	WOOD	WOOD	WOOD	WOOD	WOOD	6'-0"	NOTE #2
201	UNFINISHED ATTIC	PLYWD	---	GWB	GWB	GWB	GWB	WOOD	VARIES	NOTE #1, #2
300	MAINTENANCE	CONC.	---	PTD OSB	PTD OSB	PTD OSB	PTD OSB	PTD OSB	9'-6"	

**GENERAL NOTES:**  
 -ALL AREAS OF WALL TILE TO BE PLACED ON 1/2" TILE BACKER BOARD  
 -ALL AREAS OF E.I.F.S. TO BE INSTALLED OVER FIBERGLASS SHEATHING  
 -E.I.F.S. -EXTERIOR INSULATION AND FINISH SYSTEM, "STO" OR EQUAL.  
**REMARKS:**  
 NOTE #1: 6/M.B. TO BE TAPED, BUT NOT PAINTED.  
 NOTE #2: PLYWOOD FLOORING IS TO BE PAINTED.  
 NOTE #3: SEE INTERIOR ELEVATIONS FOR LOCATION AND EXTENT OF MATERIALS  
 NOTE #4: SEE FLOOR PATTERN PLAN FOR LOCATIONS AND EXTENT OF MATERIALS  
 NOTE #5: SEE REFLECTED CEILING PLAN FOR CONFIGURATION  
 NOTE #6: CEILING HEIGHT TO MATCH THAT IN RM'S #109/#110/#113.  
 NOTE #7: AREAS OF CEILING INDICATED TO BE 6/M.B. SHOULD BE HIGH IMPACT RESISTANT 6/M.B.  
 NOTE #8: AREAS OF WALL AND CEILING INDICATED TO BE 6/M.B. SHOULD BE HIGH IMPACT 6/M.B.



**DORMER PLAN**  
SCALE: 1/8" = 1'-0"  
2003\_FF01



**ROOF PLAN**  
SCALE: 1/8" = 1'-0"  
2003\_FF01

— SNOW GUARDS  
 - - - LINE OF EXTERIOR WALL BELOW  
 [Hatched Area] AREAS TO RELIEVE ICE/WATER SHIELD  
 ○ V.T.R., VENT THROUGH ROOF, SEE MECH. DWG'S



**NORTHERN ARCHITECTS**  
 207 KING STREET  
 SUITE 3  
 BURLINGTON, VERMONT  
 05401-4502  
 802-658-1953

CONSULTANTS  
 CIVIL  
 KREBS AND LANSING  
 10 Main Street  
 Colchester, VT 05446  
 (802)-878-0375  
 LANDSCAPE ARCHITECT  
**OHKW**  
 7 Marble Ave.  
 Burlington VT 05401  
 (802)-864-0010  
 STRUCTURAL  
 RICHARD M. DOHERTY, P.E.  
 117 St. Paul Street  
 Burlington VT 05401  
 (802)-660-4212  
 PLUMBING, MECHANICAL,  
 AND ELECTRICAL  
 DUFRESNE AND HENRY  
 Precision Park  
 North Springfield VT 05150-0024  
 (802)-886-2261

REVISIONS

PROJECT  
**DERBY WELCOME CENTER**  
 PROJECT #109-3(8)  
 NEW FACILITY  
 DERBY VERMONT  
 DATE: 01/01/2002  
 SCALE: AS NOTED  
 CHECKED: HS  
 PROJECT NO: 2003

**ATTIC, DORMER AND ROOF PLAN / FINISH SCHEDULE**

**A1.2**

© NORTHERN ARCHITECTS INC. ALL RIGHTS RESERVED 2002