



**NORTHERN ARCHITECTS**  
 207 KING STREET  
 SUITE 3  
 BURLINGTON, VERMONT  
 05401-4502  
 802-658-1953

CONSULTANTS  
 CIVIL  
 KREBS AND LANING  
 10 Main Street  
 Colchester VT 05446  
 (802)-878-0375  
 LANDSCAPE ARCHITECT  
**OHKW**  
 1 Marble Ave.  
 Burlington VT 05401  
 (802)-660-4212  
 PLUMBING, MECHANICAL  
 AND ELECTRICAL  
 DUFRESNE AND HENRY  
 Precision Park  
 North Springfield VT 05150-0024  
 (802)-886-2261

REVISIONS

PROJECT  
**DERBY WELCOME CENTER**  
 PROJECT #1091-3(8)

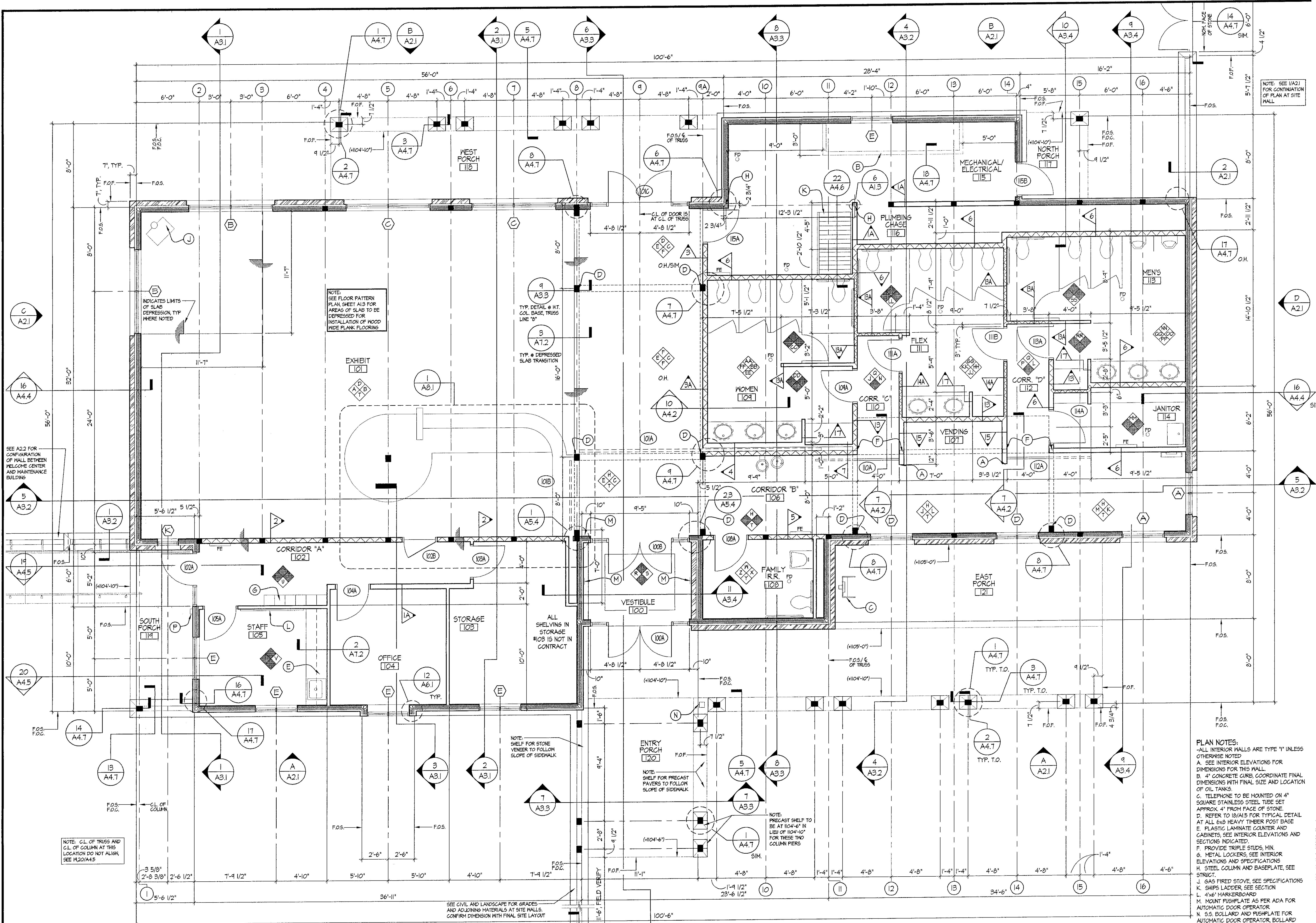
NEW FACILITY

DERBY VERMONT

DATE: 01/07/2002  
 SCALE: 1/4" = 1'-0"  
 CHECKED: HS  
 PROJECT NO: 2003

FLOOR PLAN - WELCOME CENTER

**A1.1**



**PLAN NOTES:**  
 ALL INTERIOR WALLS ARE TYPE "I" UNLESS OTHERWISE NOTED.  
 A. SEE INTERIOR ELEVATIONS FOR DIMENSIONS FOR THIS WALL.  
 B. 4" CONCRETE CURB, COORDINATE FINAL DIMENSIONS WITH FINAL SIZE AND LOCATION OF OIL TANKS.  
 C. TELEPHONE TO BE MOUNTED ON 4" SQUARE STAINLESS STEEL TUBE SET APPROX. 4" FROM FACE OF STONE.  
 D. REFER TO 18/A15 FOR TYPICAL DETAIL AT ALL 6x8 HEAVY TIMBER POST BASE.  
 E. PLASTIC LAMINATE COUNTER AND CABINETS; SEE INTERIOR ELEVATIONS AND SECTIONS INDICATED.  
 F. PROVIDE TRIPLE STUDS, MIN.  
 G. METAL LOCKERS; SEE INTERIOR ELEVATIONS AND SPECIFICATIONS.  
 H. STEEL COLUMN AND BASEPLATE; SEE STRUT.  
 J. GAS FIRED STOVE; SEE SPECIFICATIONS.  
 K. SHIPS LADDER; SEE SECTION.  
 L. 4"x6" MARKERBOARD.  
 M. MOUNT PUSHPLATE AS PER ADA FOR AUTOMATIC DOOR OPERATOR.  
 N. 5.5" BOLLARD AND PUSHPLATE FOR AUTOMATIC DOOR OPERATOR; BOLLARD SIZE AS REQ'D BY PUSHPLATE.  
 P. CARD READER FOR DOOR OPERATION; MOUNT WITH TOP AT 4'-0" A.F.F.

**FIRST FLOOR PLAN**  
 SCALE: 1/4" = 1'-0"  
 2003\_FPO1

© NORTHERN ARCHITECTS INC. ALL RIGHTS RESERVED 2002