

NORTHERN ARCHITECTS

207 KING STREET
SUITE 3
BURLINGTON, VERMONT
05401-4502

802-658-1953

CONSULTANTS

CIVIL
KREBS AND LANGING
Main Street
Colchester VT 05446
(802) 878-0378

LANDSCAPE ARCHITECT
OHKW
1 Marie Ave.
Burlington VT 05401
(802) 864-0010

STRUCTURAL
Richard M. Doherty
11 St. Paul Street
Burlington VT 05401
(802) 860-9212

PLUMBING, MECHANICAL
AND ELECTRICAL
DUBESNE AND HENRY
Precision Park
North Springfield VT 0550-0078
(802) 886-2261

REVISIONS

PROJECT

DERBY WELCOME CENTER

PROJECT #10 091-3(6)

NEW FACILITY

DERBY VERMONT

DATE: 01/07/2002

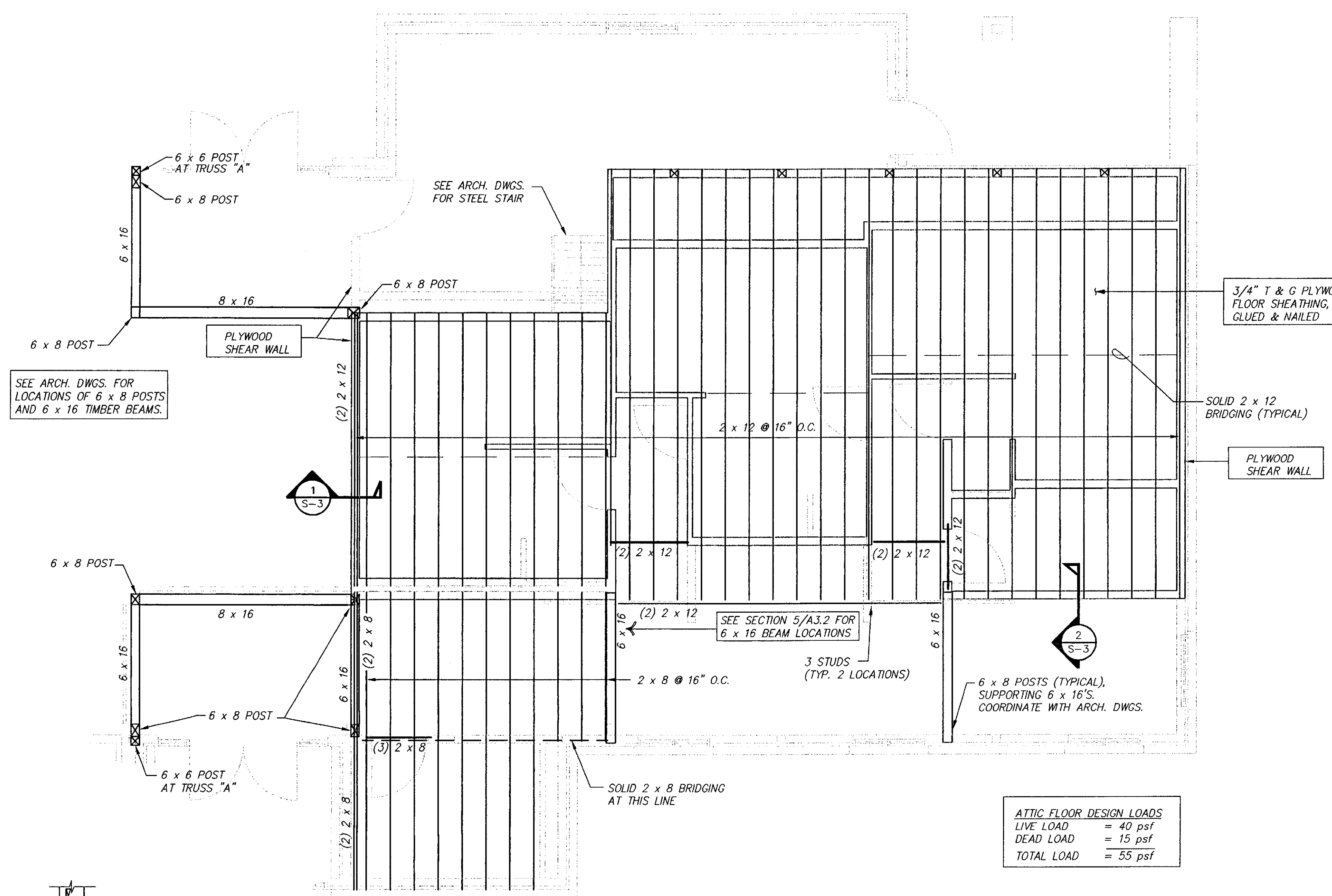
SCALE: AS NOTED

CHECKED: RMD

PROJECT NO: 2003

ATTIC FRAMING PLAN

S-3

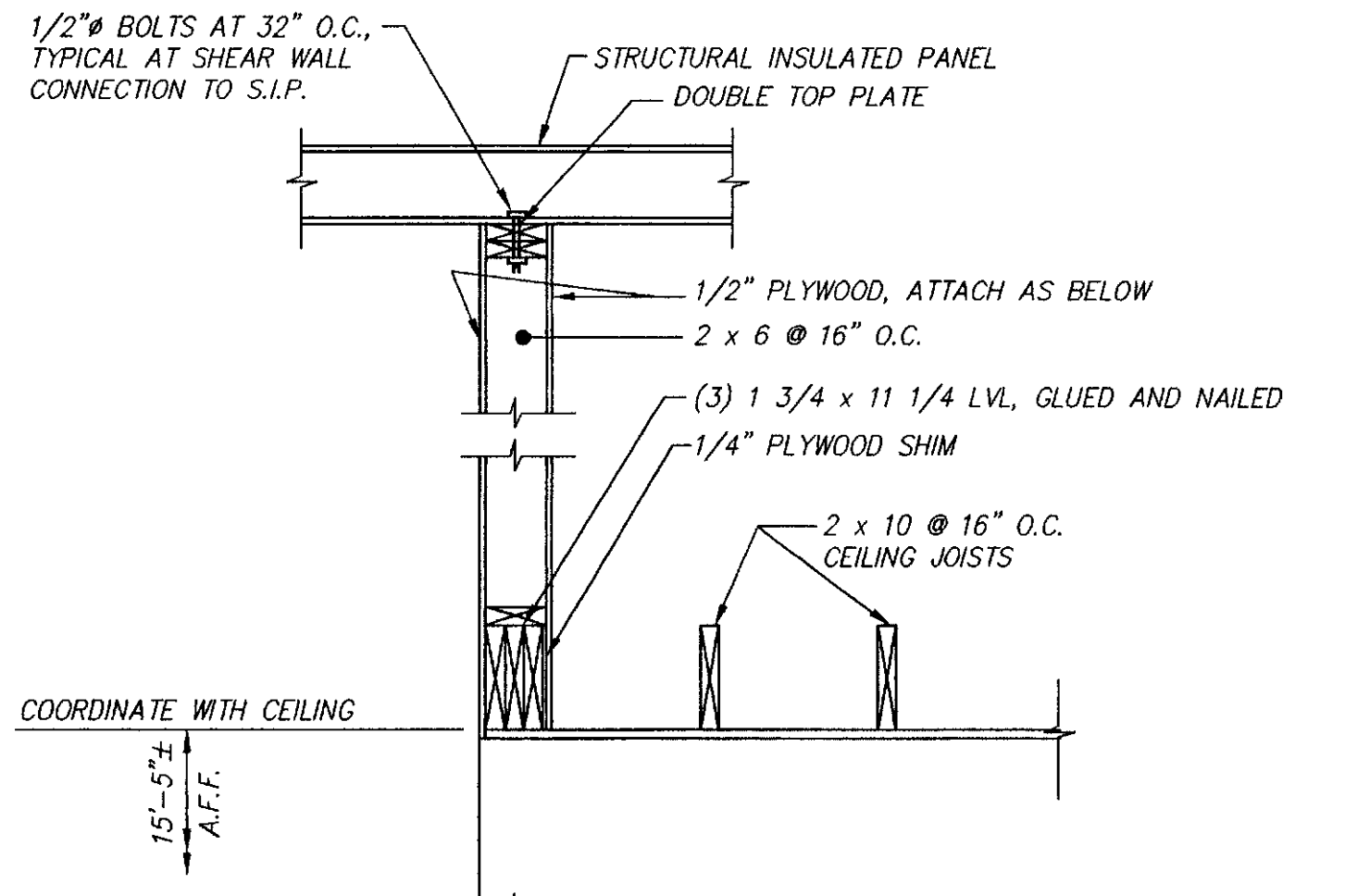


ATTIC FLOOR DESIGN LOADS

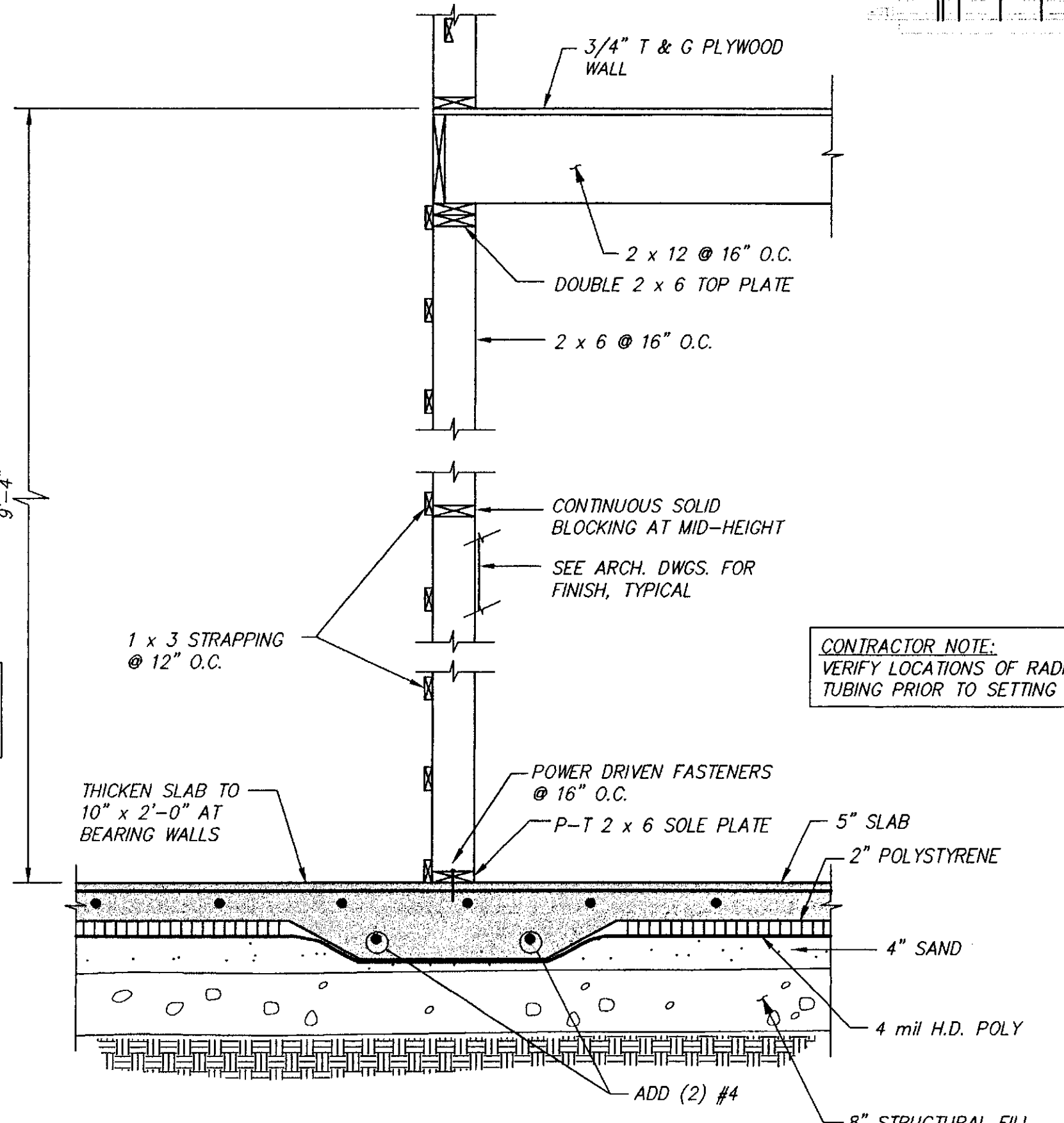
LIVE LOAD	= 40 psf
DEAD LOAD	= 15 psf
TOTAL LOAD	= 55 psf

ATTIC FRAMING PLAN
SCALE: 1/4" = 1'-0"

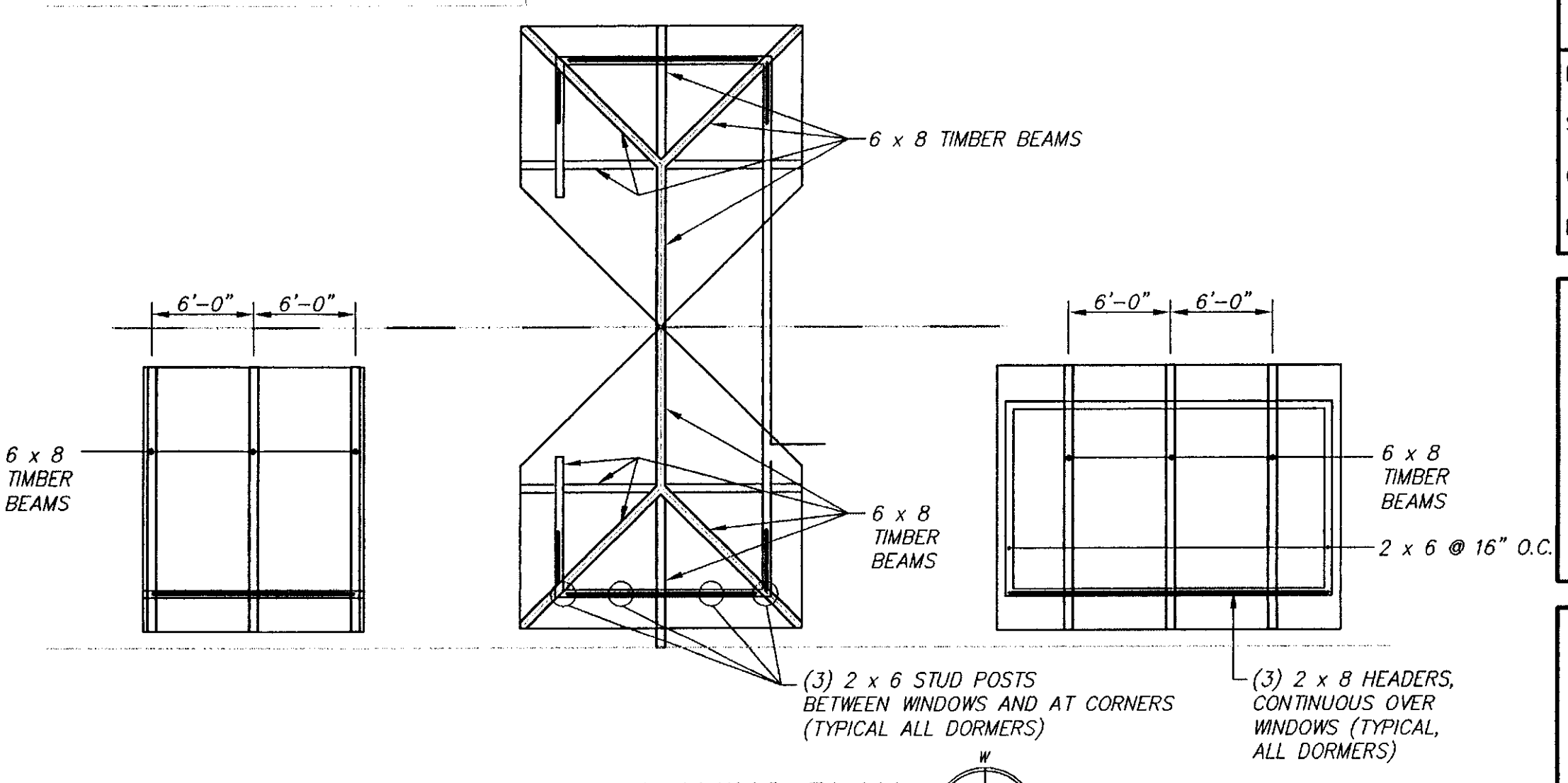
- NOTES:
- ELEVATION TOP OF PLYWOOD = 1114'-4".
 - INSTALL JOIST HANGERS AT FLUSH-FRAMED CONDITIONS.
 - DOUBLE FLOOR JOISTS UNDER MECHANICAL UNITS.



SECTION 1
SCALE: 3/4" = 1'-0"



SECTION 2
SCALE: 3/4" = 1'-0"



DORMER FRAMING PLAN
SCALE: 1/8" = 1'-0"

C:\DWG\RM\DERBY\WELCOME-CENTER.dwg, 11/26/01 at 09:16