

**NORTHERN ARCHITECTS**

207 KING STREET  
SUITE 3  
BURLINGTON, VERMONT  
05401-4502  
802-658-1953

CONSULTANTS  
CIVIL  
KREBS AND LANSING  
10 Main Street  
Colchester VT 05446  
(802)-878-0375

**LANDSCAPE ARCHITECT**  
**OHKW**

OFFICE OF R. M. DEER WAGNER  
7 Marble Ave.  
Burlington VT 05401  
(802)-864-0010  
STRUCTURAL  
RICHARD M. DOHERTY, P.E.  
117 St. Paul Street  
Burlington VT 05401  
(802)-860-9912  
PLUMBING, MECHANICAL  
AND ELECTRICAL  
DUFRESNE AND HENRY  
Precision Park  
North Springfield VT 05150-0029  
(802)-886-2761

REVISIONS

NO.	DATE	DESCRIPTION

PROJECT

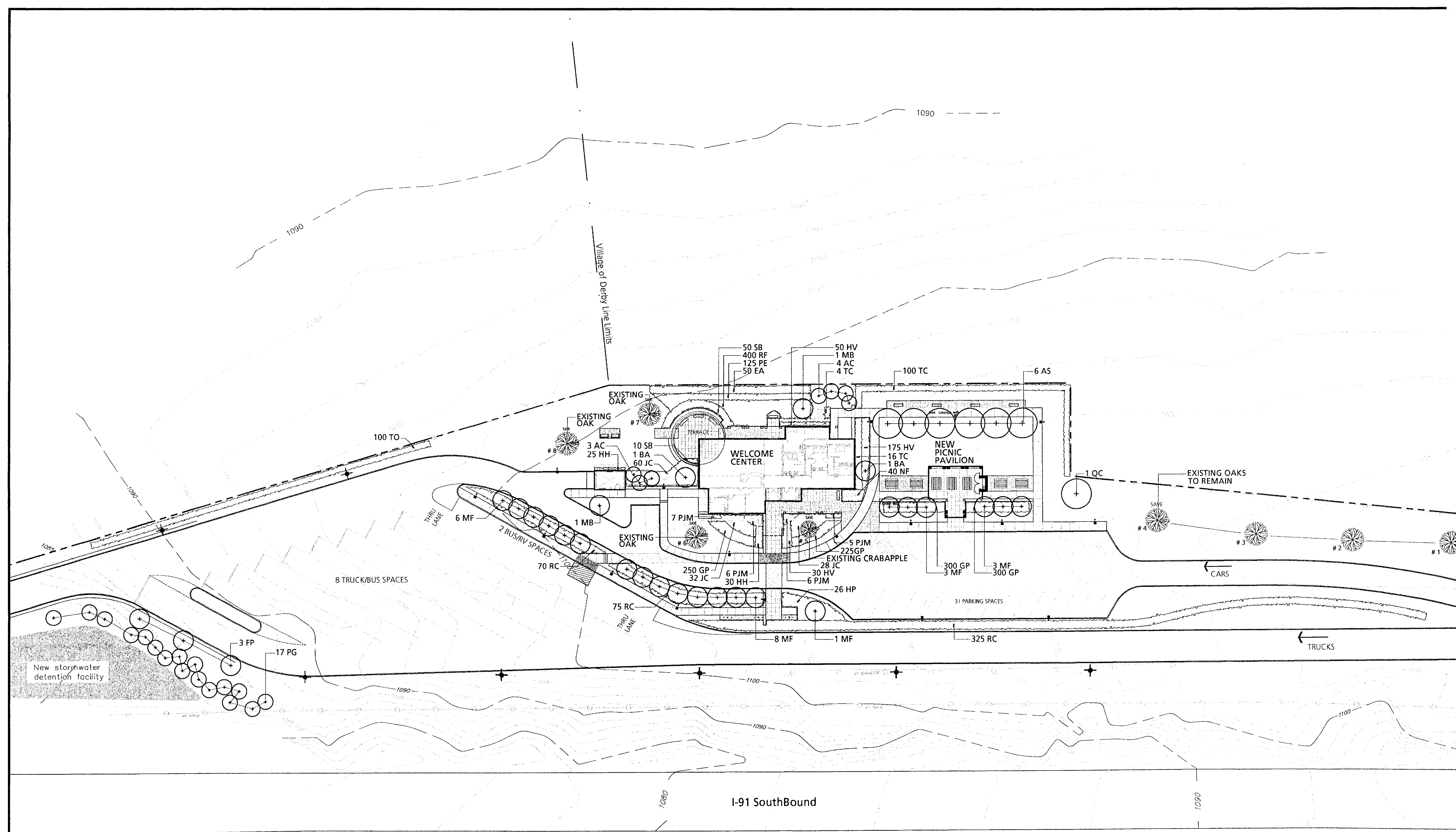
**DERBY WELCOME CENTER**  
PROJECT #101 091-3(8)  
**NEW FACILITY**

DERBY  
VERMONT

DATE: 01-07-2002  
SCALE: 1"=30'-0"  
CHECKED: AS  
PROJECT NO:00036

PLANTING PLAN

**L1.0**



**PLANT SCHEDULE**

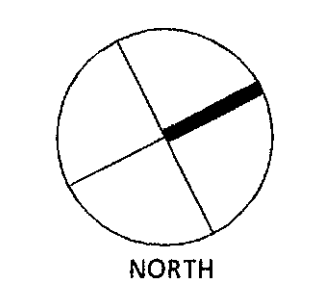
KEY	QTY.	BOTANICAL NAME	COMMON NAME	SIZE	COND.	SPACING
<b>DECIDUOUS TREES</b>						
AC	12	Amenlanchier canadensis	SERVICEBERRY	8' - 10' ht. min. (multi-stem)	B&B	Plant as shown
AS	6	Acer saccharum	SUGAR MAPLE	3"-3 1/2" CAL.	B&B	Plant as shown
BA	2	Betula alba	WHITE BIRCH	8' - 10' ht. min. (multi-stem)	B&B	Plant as shown
FP	3	Fraxinus pennsylvanica	GREEN ASH	3"-3 1/2" CAL.	B&B	Plant as shown
MB	2	Malus baccata	SIBERIAN CRABAPPLE	2"-2 1/2" cal.	B&B	Plant as shown
MF	21	Malus floribunda	JAPANESE FLOWERING CRABAPPLE	2"-2 1/2" cal.	B&B	Plant as shown
QC	1	Quercus coccinea	SCARLET OAK	3"-3 1/2" CAL.	B&B	Plant as shown
<b>EVERGREEN TREES</b>						
PG	17	Picea glauca	WHITE SPRUCE	6'-8' ht.	B&B	Plant as shown
<b>DECIDUOUS SHRUBS</b>						
EA	50	Euonymus alatus compacta	DWARF BURNING BUSH	18"-24" ht.	B&B	Plant as shown
HP	26	Hydrangea paniculata tardiva	TARDIVA HYDRANGEA	24"-30" ht.	B&B	Plant as shown
RC	470	Rosa carefree beauty	CAREFREE BEAUTY SHRUB ROSE	18"-24" ht.	3 Cal.	Plant as shown
SB	60	Spirea brunsaldi	BRUNSWICK SPIREA	18"-24" ht.	3 Cal.	Plant as shown
<b>EVERGREEN SHRUBS</b>						
JC	120	Juniperus chinensis sea-green	SEA GREEN JUNIPER	18"-24" spr.	B&B	Plant as shown
PJM	17	Rhododendron PJM	PJM RHODODENDRON	24"-30" ht.	B&B	Plant as shown
TC	120	Taxus cuspidata nana	DWARF JAPANESE YEW	18"-24" spr.	B&B	Plant as shown
<b>PERENNIALS &amp; GROUNDCOVERS</b>						
GP	1075	Gaultheria procumbens	CREeping WINTERGREEN	8" spr. min.	1 gal.	Plant at 9" on center
HH	55	Hemerocallis happy returns	HAPPY RETURNS DAYLILY	18"-24" ht.	1 gal.	Plant at 18" on center
HV	255	Hosta ventricosa	PLANTAIN LILY	18"-24" ht.	1 gal.	Plant at 18" on center
NF	40	Nepeta x faassenii	CATMINT	12" spread min.	1 gal.	Plant at 18" on center
FE	125	Fernisium alpestrisoides	FOUNTAIN GRASS	18" ht. min.	2 gal.	Plant at 24" on center
RF	400	Rudbeckia fulgida goldsturm	BLACK EYED SUSAN	18" ht. min.	2 gal.	Plant at 18" on center
<b>EVERGREEN HEDGE</b>						
TO	100	Thuja occidentalis nigra	DARK AMERICAN ARBORVITAE	3"-4" hgt.	B&B	Plant as shown

**GENERAL NOTES**

- All plant material in the plant schedule shall be nursery grown in accordance with ANSI in accordance with Z.60.1 Standards for measurement of nursery stock.
- All plants shall be guaranteed by the Contractor for a period of one year from date of receipt of Provisional Acceptance of the completed installation by the Owner.
- Replacement plantings will be required prior to Final Acceptance for any plants which are missing, not true to specifications, have died or are unhealthy or uncharacteristic of the species (due to excessive pruning, dieback or other reasons).
- All plant materials shall be selected and tagged at the nursery by Landscape Architect.
- The Landscape Architect's approval is required for any plant material substitutions.
- Contractor is responsible for verifying and confirming all plant quantities between planting plan and plant list. If there is a discrepancy, provide the greater number or the more expensive item. Notify Landscape Architect immediately.
- All shrubs and trees will be sprayed with the anti-desiccant "Wilt-Pruf" (or approved equal) prior to the first winter.
- The Landscape Contractor shall have the General Contractor locate all underground utilities in areas to be landscaped prior to commencing any excavation. Adjustments to tree locations will be allowed where utility conflicts are clearly a problem and with prior site approval by Landscape Architect.
- All shrubs and tree location shall be staked in the field by Contractor for Landscape Architects approval prior to installation.
- Adjustments to plant beds shall be approved by Landscape Architect.
- General Contractor is responsible for all erosion control measures during construction.
- All disturbed areas are to be topsoiled and seeded.
- Mulch shall consist of double-shredded hardwood mulch or approved equal and Contractor is responsible for providing samples of mulch to Landscape Architect. Mulch plant materials as shown on plan and details.
- It is the intent of this contract to avoid any disturbance to existing trees or shrubs on site other than those specifically designated for transplant or removal.
- Liquidated damages for trees damaged by construction operation shall be \$500 per caliper inch. Shrubs shall be \$100 each.
- Contractor is responsible for all damage due to his operations inside and outside the contract limit line.
- Contractor is responsible for checking spot elevations and verifying proposed grades by providing grade stakes. Grades must be approved by Landscape Architect prior to proceeding.
- Contractor shall blend new work smoothly with existing grades at contract limit line and/or limit of construction line.
- Contractor to verify that subgrades are 4 inches below finished grade prior to spreading top soil for seeded areas.

**DRAWING NOTES**

- Refer to Civil Engineers drawings for limits and designation of seeded lawn areas.



© OHKW ALL RIGHTS RESERVED 2002