

**NORTHERN ARCHITECTS**  
 207 KING STREET  
 SUITE 3  
 BURLINGTON, VERMONT  
 05401-4502  
 802-658-1953

CONSULTANTS  
 CIVIL  
 KREPS & LANSING  
 64 Main Street, Suite 201,  
 Colchester, VT 05446  
 (802) 878-0375  
 LANDSCAPE ARCHITECT  
**OHKW**  
 OFFICE OF K. KEITH WAGNER  
 7 Maple Avenue  
 Burlington, VT 05401  
 (802) 664-0010  
 STRUCTURAL  
 ROBERT H. DOHERTY, P.E.  
 117 St. Paul Street  
 Burlington, VT 05401  
 802-660-9212  
 PLUMBING MECHANICAL  
 AND ELECTRICAL  
 DUFRESNE-HEWITT, INC.  
 Precision Park  
 North Ferrisburgh, VT 05750  
 802-896-2261

REVISIONS

PROJECT

**DERBY WELCOME CENTER**  
 PROJECT #IM 091-3(8)

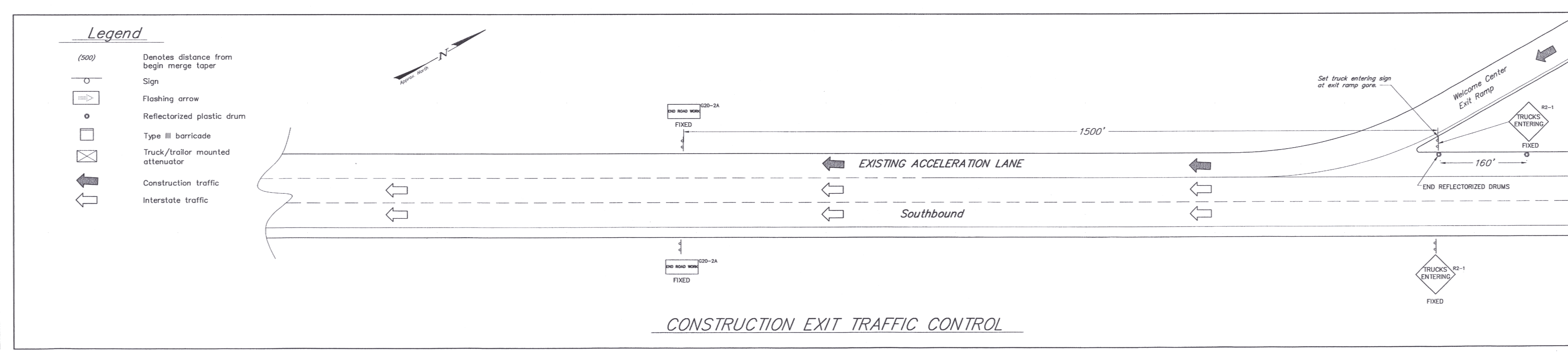
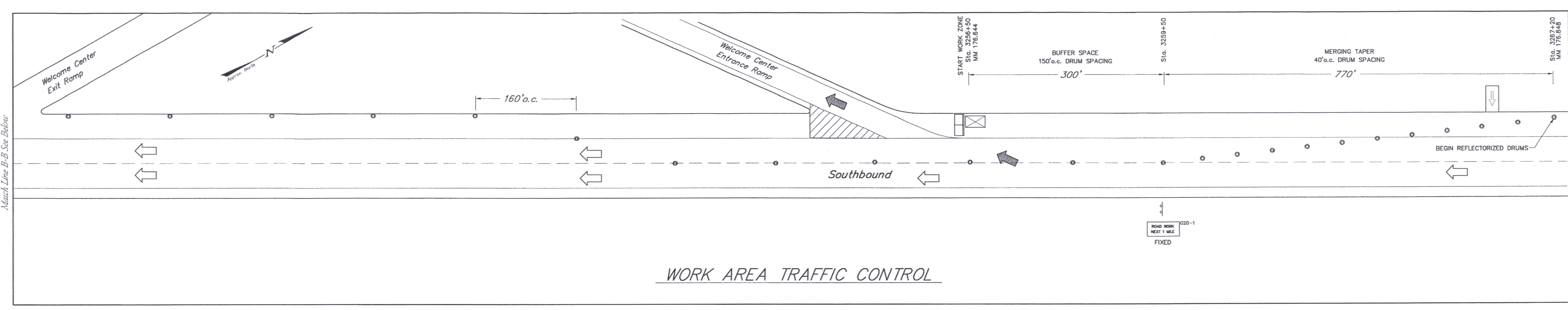
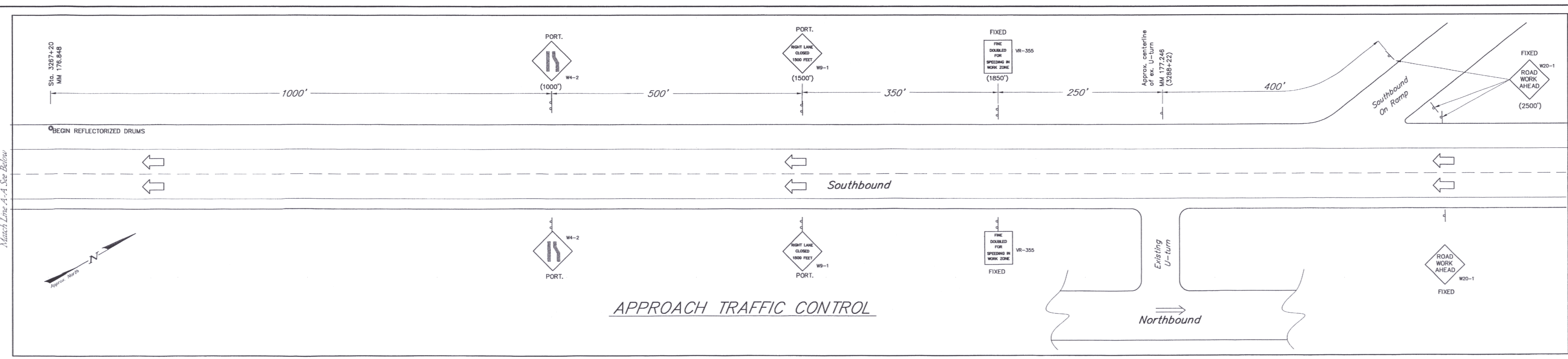
NEW FACILITY

DERBY VERMONT

DATE: 01/07/02  
 SCALE: \* N.T.S.  
 CHECKED:  
 PROJECT NO:

**TRAFFIC CONTROL PLAN - ONE LANE CLOSED**

**SC-23**  
 00137 - SC-23-24.dwg



- Traffic Notes:**
1. All signs designated as **FIXED** shall remain in place through the entire project duration.
  2. All signs to be removed or covered when not needed.
  3. Contractor to submit traffic control plan for blasting. Signage to conform to MUTCD and Standard Sheet E-102.
  4. Contractor to submit traffic control plan for Louis Street. Signage to conform with MUTCD.

**MAIN LINE TRAFFIC CONTROL**  
**DIVIDED HIGHWAY**  
**ONE LANE CLOSED**

Match Line A-A See Below

Match Line B-B See Below

Match Line A-A See Above

Match Line B-B See Above