

NORTHERN ARCHITECTS

207 KING STREET
SUITE 3
BURLINGTON, VERMONT
05401-4502
802-658-1953

CONSULTANTS

CIVIL
REDDIS & LANSING
164 Main Street, Suite 201
Colchester, VT 05445
(802) 878-0275

LANDSCAPE ARCHITECT
OHKW
OFFICE OF M. KEITH WAGNER
7 Maple Avenue
Dundee, VT 05401
(802) 864-0010

STRUCTURAL
RICHARD H. DOHERTY, P.E.
117 5th Full Street
Dundee, VT 05401
802-660-9212

PLUMBING, MECHANICAL AND ELECTRICAL
DUFRESNE-HENRY, INC.
1700 North Street
North Springfield, VT 05100
802-886-2244

REVISIONS

NO.	DATE	DESCRIPTION

PROJECT

DERBY WELCOME CENTER
PROJECT #DM 091-3(8)

NEW FACILITY

DERBY VERMONT

DATE: 01/07/02

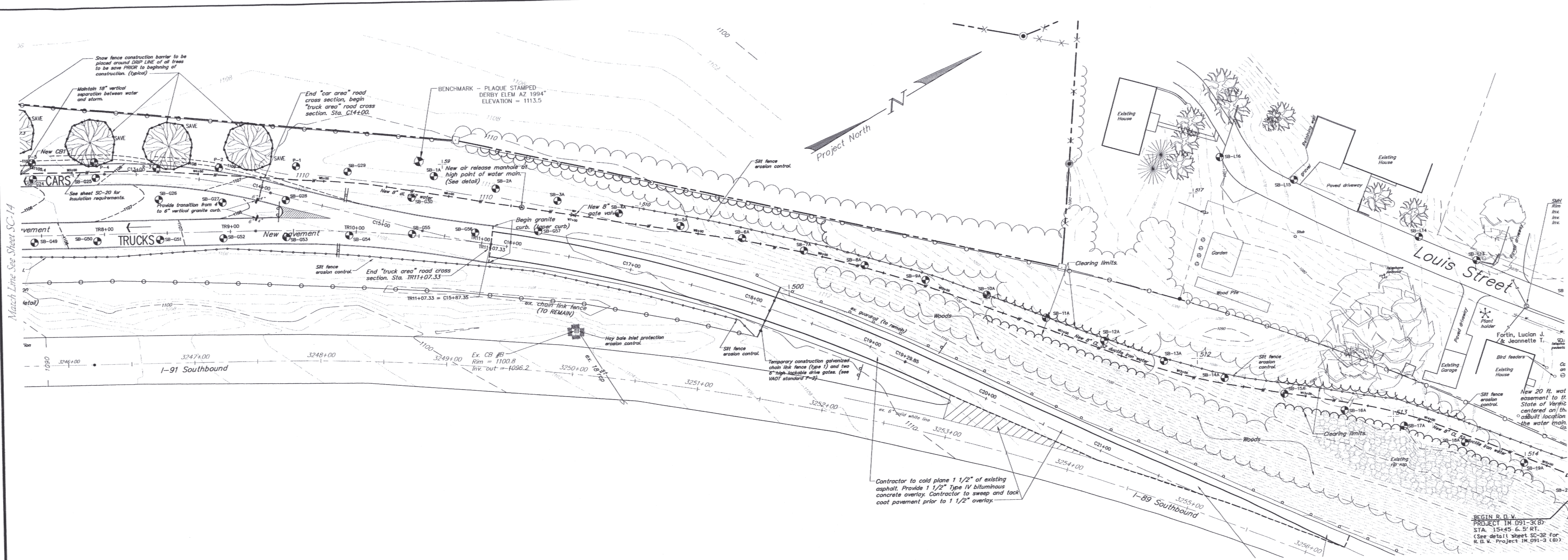
SCALE: 1" = 40'

CHECKED:

PROJECT NO:

LEDGE PROBE PLAN

SC-15



Probe information for sheet SC-15

NAME	GRID ELEV	SOILS	AUGER REFUSAL	DEPTH TO REFUSAL	LEDGE ELEV
P-1	1111.58		X	8'	1103.6'
P-2	1109.62		X	4'	1105.0'
P-3	1109.13		X	2.5'	1106.0'
P-4	1108.63		X	4'	1104.0'
P-5	1102.94				
SB-1A	1112.72	0'-6" Topsoil, fine dark soil with rocks - Auger refusal on stone at 5"	X	5"	1108'
SB-2A	1111.93	0'-6" Topsoil, 6"-7.5" Black soil with rock - Auger refusal on stone at 7.5"	X	7.5"	1104'
SB-3A	1111.18	0'-2" (6") Topsoil, sand, stones - Auger refusal at 2.5" - 6" weathered rock	X	2.5"	1108.3'
SB-4A	1111.80	0'-6" Topsoil, 6"-2.5" Sand, stone - Auger refusal at 2.5"	X	2.5"	1106'
SB-5A	1110.66	0'-6" Topsoil, 6"-5" Sand, stone - Auger refusal at 5"	X	5"	1104'
SB-6A	1108.89	0'-6" Topsoil, 6"-3" Sand, stony gravel - Auger refusal at 3"	X	3"	1101.2'
SB-7A	1103.69	0'-6" Topsoil, 6"-2.5" Brown sand, stone - Auger refusal at 2.5"	X	2.5"	1099.3'
SB-8A	1101.79	0'-6" Topsoil, 6"-2.5" Fine brown sand, stone - Auger refusal at 2.5"	X	2.5"	1096'
SB-9A	1100.70	0'-6" Topsoil, 6"-5" Fine brown sand, stone - Auger refusal on stone at 5"	X	5"	1091'
SB-10A	1098.91	0'-6" Topsoil, 6"-6" Fine brown sand, stone - Auger refusal on stone at 6"	X	6"	1089'
SB-11A	1093.63	0'-6" Topsoil, 6"-5" Fine sand, stones - refusal at 5"	X	5"	1086'
SB-12A	1090.19	0'-6" Topsoil, 6"-2" Medium fine sand, stones - refusal at 2"	X	2"	1081'
SB-13A	1087.70	0'-6" Topsoil, 6"-7" Fine sand, stone - refusal at 7"	X	7"	1081'
SB-C49	1106.14	0'-8" Blacktop, 8"-2.5" gravel-refusal at 2.5"	X	2.5"	1104'
SB-C50	1106.44	0'-8" Blacktop, 8"-1.5" Gravel-refusal at 1.5"	X	1.5"	1103.25'
SB-C51	1106.76	0'-8" Blacktop, 8"-1.5" Gravel-refusal at 1.5"	X	1.5"	1103.6'
SB-C52	1107.08	0'-8" Blacktop, 8"-1.5" Gravel-refusal at 1.5"	X	1.5"	1105'
SB-C53	1107.45	0'-8" Blacktop, 8"-2.5" Gravel-refusal at 2.5"	X	2.5"	1105'
SB-C54	1107.89	0'-8" Blacktop, 8"-1" Gravel-refusal at 1"	X	1"	1106'
SB-C55	1108.73	0'-8" Blacktop, 8"-1" Gravel-refusal at 1"	X	1"	1107'
SB-C56	1109.64	0'-8" Blacktop, 8"-1" Gravel-refusal at 1"	X	1"	1107'
SB-C57	1110.12	0'-6" Topsoil, 6"-3" Sand, silt, stones - Auger refusal on stone at 3"	X	3"	1107'

Note:
Location and existence of all existing utilities is approximate. The Contractor shall contact "Dig Safe" prior to starting any excavation.

Legend

Existing ledge probe/soil boring (SB-1 through SB-7 are soil borings, see attached results)

