

**NORTHERN ARCHITECTS**  
 207 KING STREET  
 SUITE 3  
 BURLINGTON, VERMONT  
 05401-4502  
 802-658-1953

**CONSULTANTS**  
 CIVIL  
 KEVIN B. LANSING  
 164 Main Street, Suite 201,  
 Colchester, VT 05445  
 (802) 875-0979  
 LANDSCAPE ARCHITECT  
**OHKW**  
 OFFICE OF H. KEITH WAGNER  
 7 Maple Avenue  
 Burlington, VT 05401  
 (802) 864-0010  
 STRUCTURAL  
 RICHARD M. DORRITY, P.E.  
 117 S. 7th Street  
 Burlington, VT 05401  
 802-660-9212  
 PLUMBING, MECHANICAL  
 AND ELECTRICAL  
 DURFEE-HENRY, INC.  
 1700 Shelburne Road  
 Shelburne, VT 05488  
 802-886-7261

**REVISIONS**

**PROJECT**  
 DERBY WELCOME CENTER  
 PROJECT #10 091-318

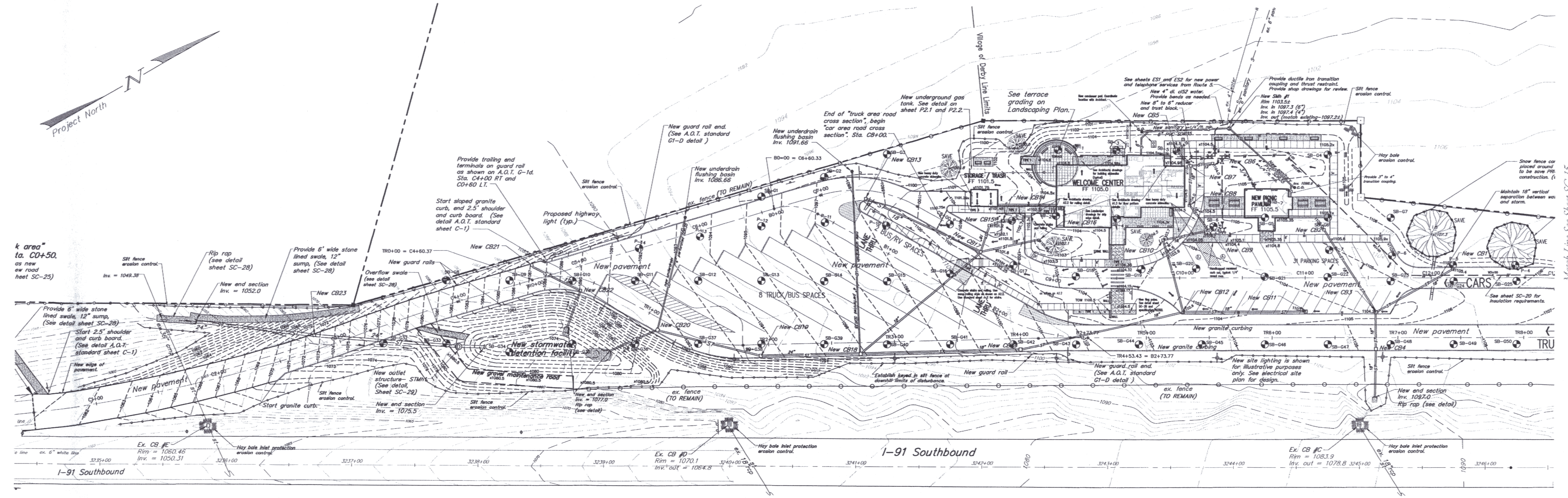
**NEW FACILITY**

**DERBY VERMONT**

DATE: 01/07/02  
 SCALE: 1" = 40'  
 CHECKED:  
 PROJECT NO:

**LEDGE PROBE PLAN**

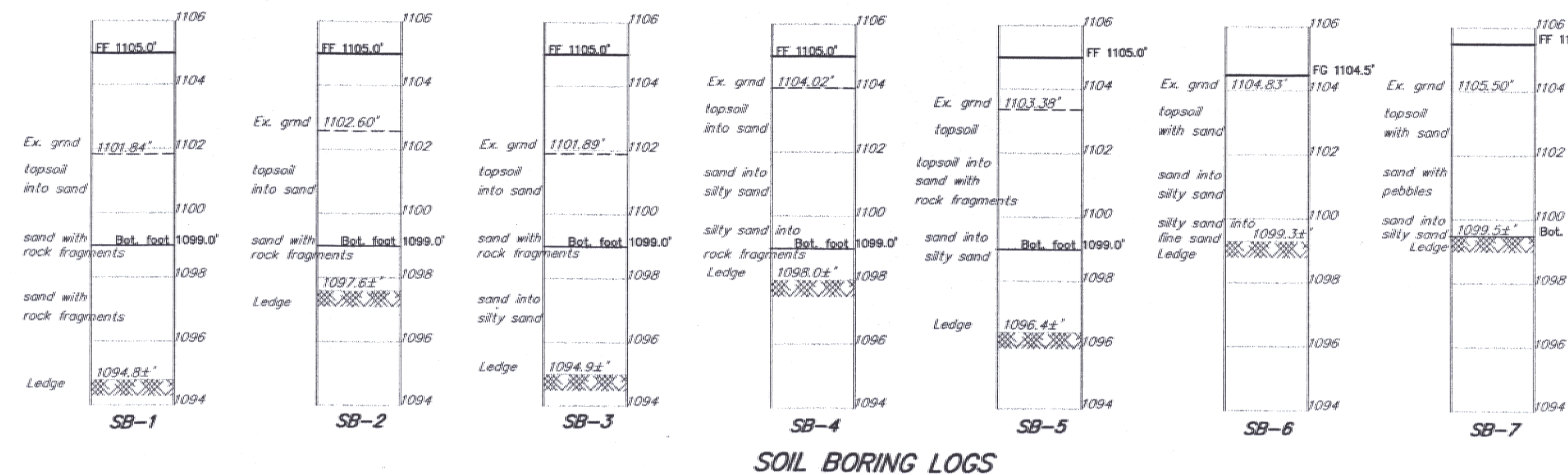
**SC-14**



Area "k" area  
 Sta. CD+50.0  
 as new  
 road  
 sheet SC-25)

Boring / Probe information for sheet SC-14

NAME	GRND ELEV	SOILS	AUGER REFUSAL	DEPTH TO REFUSAL	LEDGE ELEV
P-5	1107.94		X	4'	1104.0'
P-6	1106.86		X	4'	1103.0'
P-7	1106.08		X	4'	1099.0'
P-8	1102.67		X	5'	1094.5'
P-9	1101.42		X	5'	1099.5'
P-10	1100.22		X	5'	1099.5'
P-11	1098.74		X	5'	1095.0'
P-12	1096.09		X	6'	1092.0'
P-13	1094.30		X	6'	1091.0'
P-14	1091.94		X	5'	1087.0'
SB-01	1086.37	0'-1" Topsoil, 1'-3" Ledge Grindings-Refusal at 3' on stone	X	3'	1083'
SB-02	1097.30	0'-1" Topsoil, 1'-7" Hard packed silty sand and gravel, 7"-10" gray ledge grindings	X	10'	1103.0'
SB-03	1088.51	0'-1" Topsoil, 1'-3.25" hard packed sand, stones-refusal on stone at 3.25'	X	3.25'	1095.26'
SB-04	1106.38	0'-1" Topsoil, 1'-8" Silty sand with stones - refusal on stone at 8'	X	8'	1099'
SB-05	1105.15	0'-1" Topsoil, 1'-7.25" Fine silty sand/stones, refusal on stone at 4.5'	X	7.25'	1097.9'
SB-06	1106.44	0'-1" Topsoil, 1'-4.5" Brown silty sand, stones-refusal on stone at 4'	X	4.5'	1102'
SB-07	1106.55	0'-1" Topsoil, 1'-4" Brown silty sand, stones-refusal on stone at 4'	X	4'	1103'
SB-08	1080.65	0'-6" Topsoil, 6'-4.5" Fine silty sand, stone - Auger refusal at 4.5' on stone	X	4.5'	1076.2'
SB-09	1081.83	0'-6" Topsoil, 6'-3.5" Silty sand, stones - 1.5' ledge grindings	X	4.5'	1077.3'
SB-10	1084.32	0'-6" Topsoil, 6' Fine brown sand, silty, stones - 6'-7" Auger refusal on stone at 7'	X	7'	1077'
SB-11	1086.99	0'-6" Fine sand with silty, stones - Auger refusal on stone at 5'	X	5'	1086'
SB-12	1092.66	0'-6" Topsoil, 6'-5" Fine brown sand, stones - Auger refusal on stone at 5'	X	5'	1089'
SB-13	1095.30	0'-6" Topsoil, 6'-1" sand, stones, 3'-4" Ledge grindings - Auger refusal on stone at 4'	X	4'	1091'
SB-14	1096.73	0'-6" Topsoil, 6'-4" Fine sand with silty, stone-Auger refusal on stone at 4'	X	4'	1093'
SB-15	1097.70	0'-6" Topsoil, 6'-4" Fine brown sand with silty, stone-Auger refusal on stone at 4'	X	4'	1094'
SB-16	1099.90	0'-6" Topsoil, 6'-6" Silty sand with stones - Auger refusal on stone at 6'	X	6'	1094'
SB-17	1101.17	0'-6" Topsoil, 6'-6" Silty brown sand with stones, Auger refusal 6' on stone	X	6'	1095'
SB-18	1102.44	0'-6" Topsoil, 6'-4" Fine brown sand with silty, stone - Auger refusal on stone at 4'	X	4'	1098'
SB-19	1103.39	0'-6" Topsoil, 6'-4" Fine brown sand, stones - Auger refusal on stone at 4'	X	4'	1099'
SB-20	1103.74	0'-6" Topsoil, 6'-5" Sand, stones - Auger refusal on stone at 5'	X	5'	1099'
SB-21	1104.15	0'-6" Topsoil, 6'-2.5" Sand, stones - Auger refusal on stone at 2'	X	2.5'	1102'
SB-22	1104.67	0'-6" Topsoil, 6'-2" Sand, stones - Auger refusal on stone at 2'	X	2'	1103'
SB-23	1103.74	0'-6" Topsoil, 6'-8" Fine sand, stone, silty - Auger refusal on stone at 8'	X	8'	1096'
SB-24	1108.77	0'-6" Topsoil, 6'-2.5" Fine sand, silty, stones - refusal on stone at 3'	X	3'	1104'
SB-25	1102.90	0'-6" Topsoil, 6'-2" Fine sand, silty, stones - Auger refusal on stone at 2'	X	2'	1106'
SB-26	1106.03	0'-6" Topsoil, 6'-2" Fine sand, stones - Auger refusal on stone at 2'	X	2'	1104'
SB-27	1108.52	0'-6" Topsoil, 6'-2.5" Fine sand, stone - Auger refusal on stone at 2.5'	X	2.5'	1104'
SB-28	1106.48	0'-6" Topsoil, 6'-2.5" Fine sand - Auger refusal on stone at 2.5'	X	2.5'	1104'
SB-29	1111.32	0'-6" Topsoil, sand, stones - 6'-3.5' - Auger refusal at 1'	X	3.5'	1108.8'
SB-30	1107.61	0'-6" Topsoil, 6'-2" Fine sand, stone - Auger refusal on stone at 2'	X	2'	1106'
SB-31	1070.55	0'-6" Topsoil, 6'-4" Sand, stones-refusal at 4'	X	4'	1067'
SB-32	1074.80	0'-6" Topsoil, 6'-2.5" Sand, stones - refusal at 2.5'	X	2.5'	1072.3'
SB-33	1079.44	0'-8" Blacktop, 8'-4" Gravel, silty sand, stones-refusal at 4'	X	4'	1075'
SB-34	1082.43	0'-6" Topsoil, 6'-3" Sand - refusal at 3'	X	3'	1079'
SB-35	1085.69	0'-8" Blacktop, 8'-3" Gravel, 3'-9" silty sand, stones-refusal at 9'	X	9'	1077'
SB-36	1088.78	0'-8" Blacktop, 8'-5" Gravel-refusal at 5'	X	5'	1083.3'
SB-37	1091.81	0'-8" Blacktop, 8'-8.5" Gravel-refusal at 8'	X	8'	1084'
SB-38	1094.91	0'-8" Blacktop, 8'-3" Gravel, 3'-10" silty sand, stones	X	10'	1091'
SB-39	1097.81	0'-8" Blacktop, 8'-3" Gravel, 3'-10" silty sand, stones	X	10'	1092'
SB-40	1100.01	0'-8" Blacktop, 8'-3" Gravel, 3'-10" silty sand, stones	X	10'	1093'
SB-41	1101.73	0'-8" Blacktop, 8'-4" Gravel, 4'-9" silty sand with stones-refusal at 8'	X	8'	1095'
SB-42	1102.82	0'-8" Blacktop, 8'-4" Gravel, 4'-7.5" silty sand, stone-refusal at 7.5'	X	7.5'	1094.15'
SB-43	1103.90	0'-8" Blacktop, 8'-3" Gravel, 3'-10" silty sand, stones	X	10'	1100.4'
SB-44	1104.96	0'-8" Blacktop, 8'-3" Gravel, 3'-10" silty sand, stones	X	10'	1101.3'
SB-45	1105.05	0'-8" Blacktop, 8'-2" Gravel-refusal at 2'	X	2'	1103'
SB-46	1105.57	0'-8" Blacktop, 8'-3.4" gravel-refusal at 3.4'	X	3.4'	1102.3'



**Note:**

Location and existence of all existing utilities is approximate. The Contractor shall contact "Dig Safe" prior to starting any excavation.

**Legend**

Existing ledge probe/soil boring (SB-1 through SB-7 are soil borings, see attached results)

