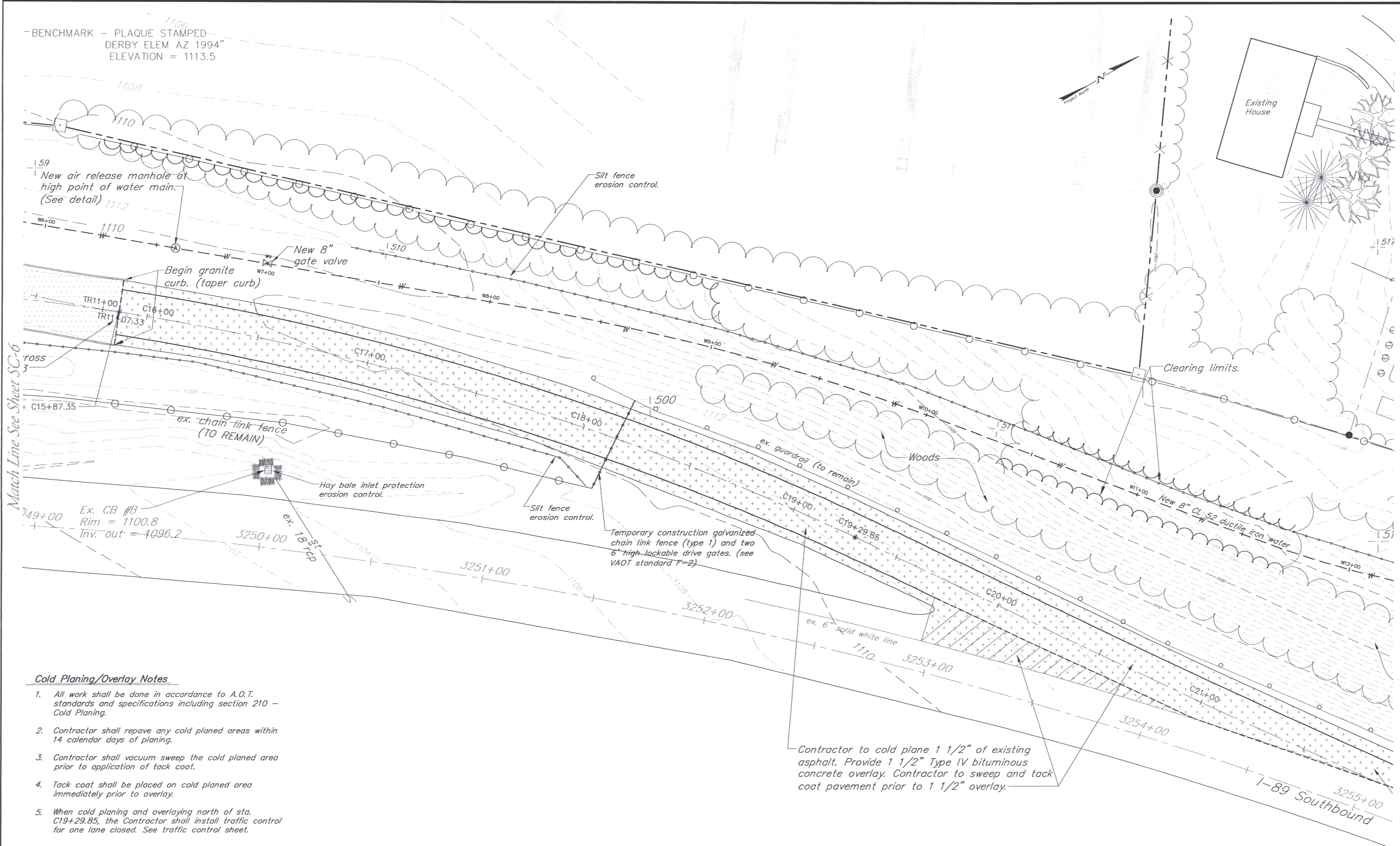


- BENCHMARK - PLAQUE STAMPED -  
 DERBY ELEM AZ 1994"  
 ELEVATION = 1113.5



Match Line See Sheet SC-6

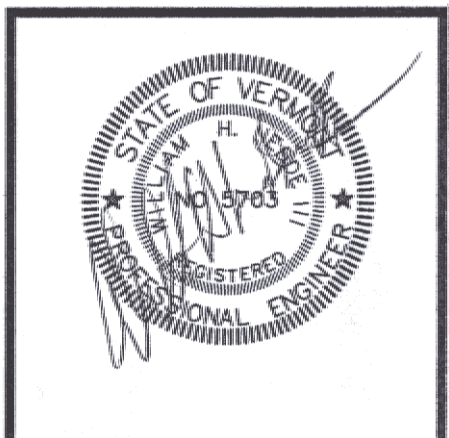
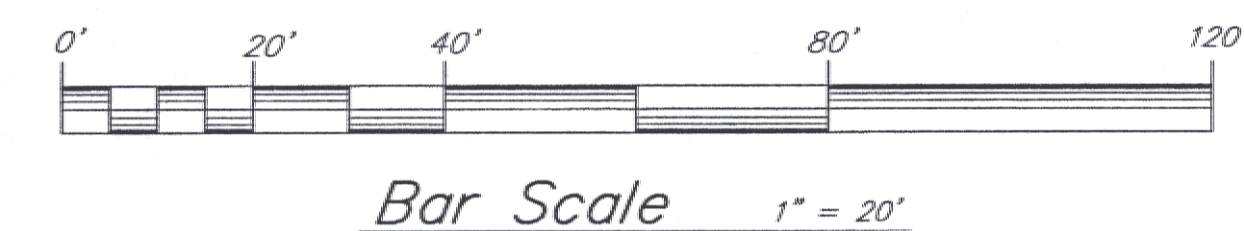
Match Line See Sheet SC-8

**Cold Planing/Overlay Notes**

1. All work shall be done in accordance to A.O.T. standards and specifications including section 210 - Cold Planing.
2. Contractor shall repave any cold planed areas within 14 calendar days of planing.
3. Contractor shall vacuum sweep the cold planed area prior to application of tack coat.
4. Tack coat shall be placed on cold planed area immediately prior to overlay.
5. When cold planing and overlaying north of sta. C19+29.85, the Contractor shall install traffic control for one lane closed. See traffic control sheet.

Contractor to cold plane 1 1/2" of existing asphalt. Provide 1 1/2" Type IV bituminous concrete overlay. Contractor to sweep and tack coat pavement prior to 1 1/2" overlay.

See Notes Sheet SC-4.  
 See Legend Sheet SC-4.



**NORTHERN ARCHITECTS**  
 207 KING STREET  
 SUITE 3  
 BURLINGTON, VERMONT  
 05401-4502  
 802-658-1953

CONSULTANTS  
 CIVIL  
 KEPPES & LAWSON  
 164 Elm Street, Suite 201,  
 Colchester, VT 05446  
 (802)-878-0275  
 LANDSCAPE ARCHITECT  
**OHKW**  
 OFFICE OF HEATH WAGNER  
 7 Maple Avenue  
 Burlington, VT 05401  
 (802)-864-0000  
 STRUCTURAL  
 RICHARD H. DORRIS, P.E.  
 111 SAINT PAUL STREET  
 BURLINGTON, VT 05401  
 802-460-9212  
 MECHANICAL/ELECTRICAL  
 DUFFREN-HENRY, INC.  
 24 ROUTE 126, PRECISION PARK  
 NORTH SPRINGFIELD, VT 05220  
 802-886-2261

REVISIONS

PROJECT  
**DERBY WELCOME CENTER**  
 PROJECT #109 091-3(8)  
 NEW FACILITY  
 DERBY VERMONT

DATE: 01/07/02  
 SCALE: 1" = 20'  
 CHECKED:  
 PROJECT NO:

SITE PLAN

**SC-7**  
 00137 - sc-siteplan.dwg  
 xref = derby2001.dwg