

GENERAL NOTES:

1. CONTRACT DRAWINGS ARE IN PART DIAGRAMMATIC, INTENDED TO SHOW SCOPE AND GENERAL ARRANGEMENT OF COMPONENTS. VERIFY ALL EXISTING CONDITIONS PRIOR TO SUBMITTING BID. DO NOT SCALE DRAWINGS.
2. VERIFY LOCATION OF SWITCHES AND OUTLETS WITH ENGINEER PRIOR TO ROUGHING IN.
3. GROUND ALL SYSTEMS PER NEC. ARTICLE 250. ALL CIRCUITS SHALL CONTAIN A GREEN, INSULATED, COPPER GROUND CONDUCTOR. GROUND CONDUCTOR IS NOT SHOWN FOR CLARITY.
4. COORDINATE WORK WITH ALL TRADES TO AVOID INTERFERENCE. NO CHANGE IN CONTRACT PRICE WILL BE ALLOWED BECAUSE OF WORK MADE NECESSARY BY FAILURE TO DO SO.
5. DIMENSIONS ARE TO CENTER, UNLESS NOTED.
6. ALL WORK SHALL BE IN ACCORDANCE WITH THE NATIONAL ELECTRICAL CODE (NEC).

REMOVALS NOTES:

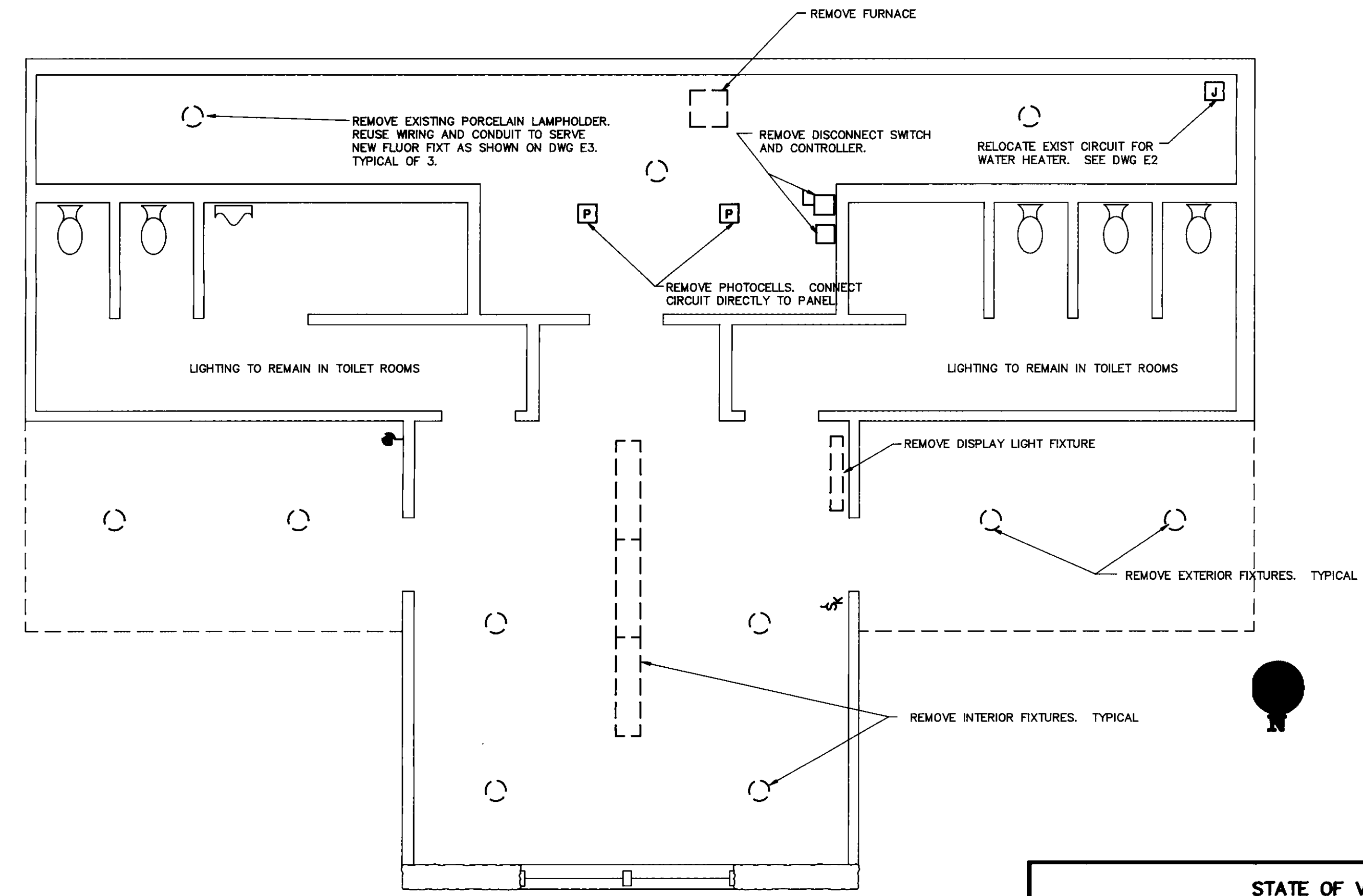
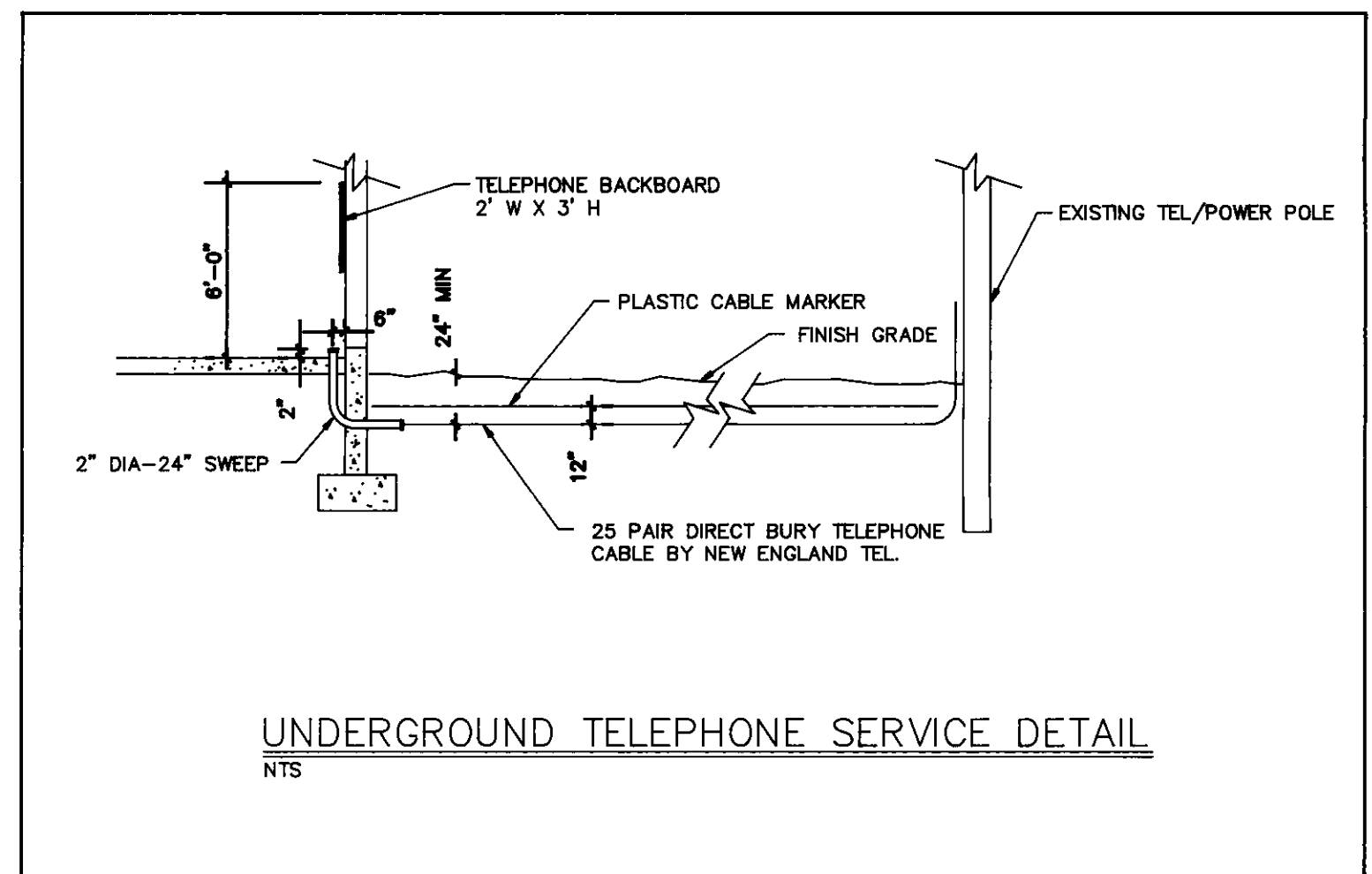
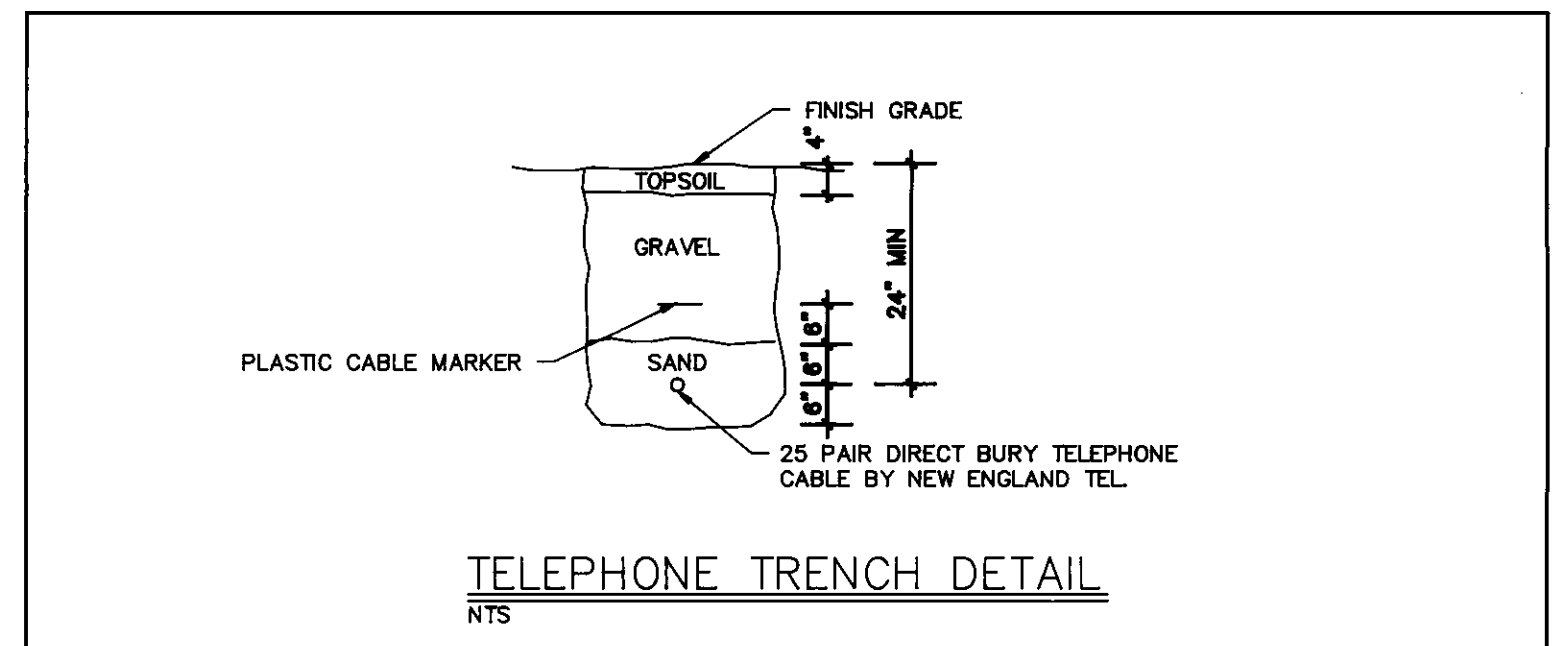
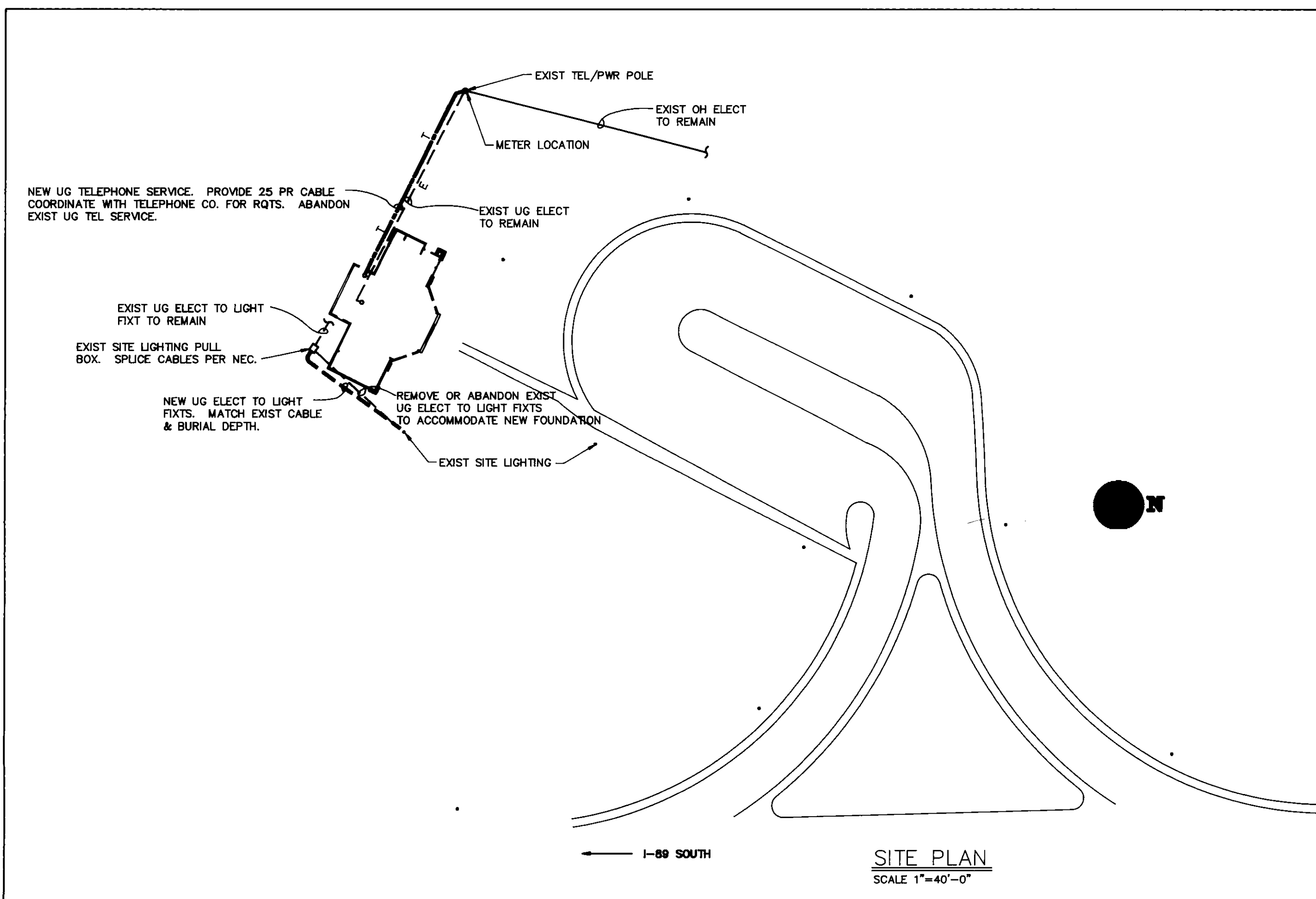
1. ITEMS SHOWN ON THIS DRAWING SHALL BE REMOVED IN THEIR ENTIRETY, UNLESS OTHERWISE NOTED. GENERALLY THOSE ITEMS ARE SHOWN DOTTED.
2. WHERE AN ITEM IS TO BE REMOVED, ALSO REMOVE ALL ASSOCIATED WIRING AND ALL EXPOSED RACEWAY. WHERE WALL IS TO BE REMAIN, PROVIDE BLANK COVER PLATE. WHERE WALL IS TO BE REMOVED, REMOVE ALL RACEWAY WHICH IS CONCEALED IN THE WALL.
3. REMOVE ALL EXPOSED RACEWAYS UNLESS THE DEVICE BEING SERVED IS NOTED TO REMAIN.
4. REMOVE WIRING FROM REMOVED CIRCUITS FROM PANELBOARD. PROVIDE NEW TYPED DIRECTORY. INDICATE SPARES AND ALL NEW AND EXISTING CIRCUITS WHICH REMAIN.

ABBREVIATIONS

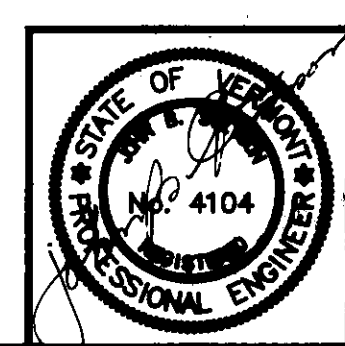
A	AMPERE	JB	JUNCTION BOX
ABV	ABOVE	KVA	KILOVOLT-AMPERES
AFF	ABOVE FINISHED FLOOR	KW	KILOWATTS
AFC	ABOVE FINISHED GRADE	LG	LONG
ARCH	ARCHITECT	LT	LIGHT
AWG	AMERICAN WIRE GAUGE	LTG	LIGHTING
BC	BARE COPPER	MCM	THOUSANDS OF CIRCULAR MILS
BOT	BOTTOM	MDP	MAIN DISTRIBUTION PANEL
C	CONDUIT	MFG	MANUFACTURER
C/B	CIRCUIT BREAKER	MTD	MOUNTED
CIRC	CIRCUIT	MTG HT	MOUNTING HEIGHT
CLG	CEILING	NET	NEW ENGLAND TELEPHONE CO.
COND	CONDUCTOR(S)	NTS	NOT TO SCALE
CONTR	CONTRACTOR	OC	ON CENTER
CT	CURRENT TRANSFORMER	OH	OVERHEAD
CU	COPPER	PNL	PANEL
DED	DEDICATED	PWR	POWER
DISC SW	DISCONNECT SWITCH	RECEPT	RECEPTACLE
DIV	DIVISION	RIGC	RIGID GALVANIZED CONDUIT
DWG	DRAWING	TEMP	TEMPERATURE
EC	EMPTY CONDUIT	TYP	TYPICAL
EMERG	EMERGENCY	UG	UNDERGROUND
EMT	ELECTRIC METALLIC TUBING	UNLESS	UNLESS OTHERWISE NOTED
EXIST	EXISTING	UTL	UTILITY
FA	FIRE ALARM	WP	WEATHERPROOF
FC	FLEXIBLE CONDUIT	XFMR	TRANSFORMER
FIXT	FIXTURE		
FLR	FLOOR		
FLUOR	FLUORESCENT		
FSS	FUSED SAFETY SWITCH		
FURN	FURNISHED		
G	GROUND		
IG	ISOLATED GROUND		
INCAND	INCANDESCENT		
INST	INSTALL		

LEGEND

SYMBOL	DESIGNATION	MOUNTING HT.
	HOMERUN IN CONDUIT NO. OF HASH MARKS = NO. OF WIRES. NO. = WIRE SIZE, NO MARKINGS = 2#12, 1#12 G, 3/4" C GROUND WIRE NOT SHOWN.	-
	JUNCTION BOX - SIZE & LUGS AS REQUIRED.	-
	FUSED DISCONNECT, NO. = FUSE SIZE, SLASH = NOT FUSED.	-
	PANELBOARD, SEE PANEL SCHEDULE.	-
	COMBINATION MOTOR AND STARTER	-
	SINGLE POLE TOGGLE SWITCH, 120V, 20A.	46" AFF
	THREE WAY TOGGLE SWITCH, 120V, 20A	46" AFF
	DUPLEX RECEPTACLE, 120V, 20A.	46" AFF
	DUPLEX RECEPTACLE WITH GROUND FAULT INTERRUPTER, 120V, 20A	18" AFF
	SINGLE RECEPTACLE FOR WALL TYPE A/C UNIT, 250V, 15A	18" AFF
	FLUORESCENT LIGHT FIXTURE, SEE LIGHTING FIXTURE SCHEDULE	-
	INCANDESCENT LIGHT FIXTURE, SEE LIGHTING FIXTURE SCHEDULE.	-
	INCANDESCENT LIGHT FIXTURE, WALL MTD, SEE LIGHTING FIXTURE SCHEDULE	-
	EXIT SIGN, SEE LIGHTING FIXTURE SCHEDULE.	90" AFF
	TELEPHONE OUTLET, WIRE OUTLET BACK TO TELEPHONE BACKBOARD	18" AFF
	TELEPHONE OUTLET, WIRE OUTLET BACK TO TELEPHONE BACKBOARD	60" AFF
	PHOTOCELL	90" AFF
	SINGLE RECEPTACLE FOR CLOCK, BRYANT MOD NO 2828-C, OR EQUAL.	64" AFF



REMOVALS PLAN
SCALE: 1/4"=1'-0"



STATE OF VERMONT
DEPARTMENT OF STATE BUILDINGS
AGENCY OF ADMINISTRATION
MONTPELIER, VERMONT

ELECTRICAL - REMOVALS & SITE PLAN
HIGHGATE WELCOME CENTER
ADDITION & RENOVATION

Stetson	Stetson Consulting Engineers, Inc. South Burlington, Vermont (802) 862-8980	DATE: DECEMBER 16, 1988	SCALE: AS NOTED	REVISIONS	VERMONT DWG. NO. E1
		DRAWN BY: M.R. POULIN	APPROVED BY: J.B. STETSON		6 OF 8