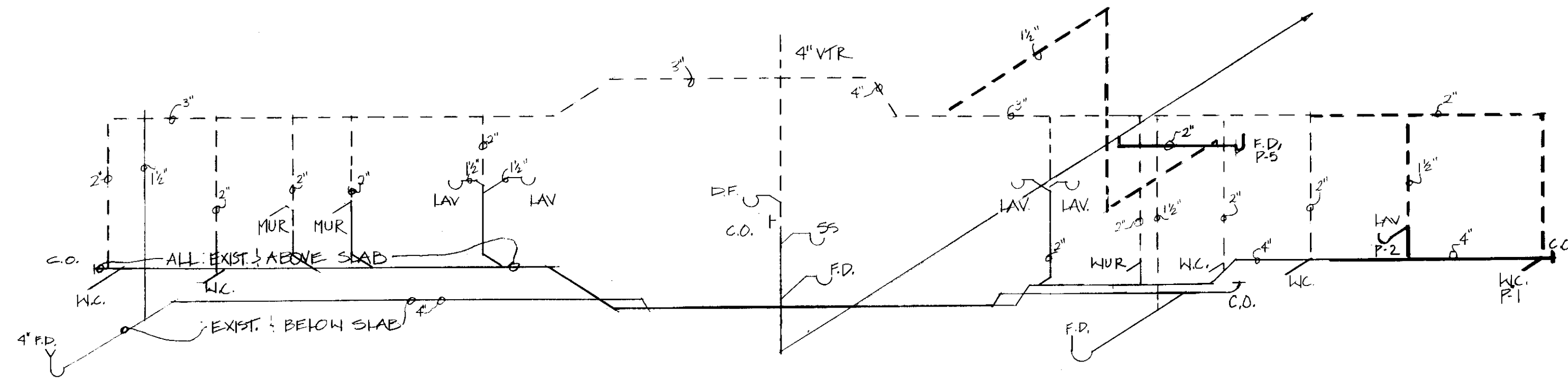
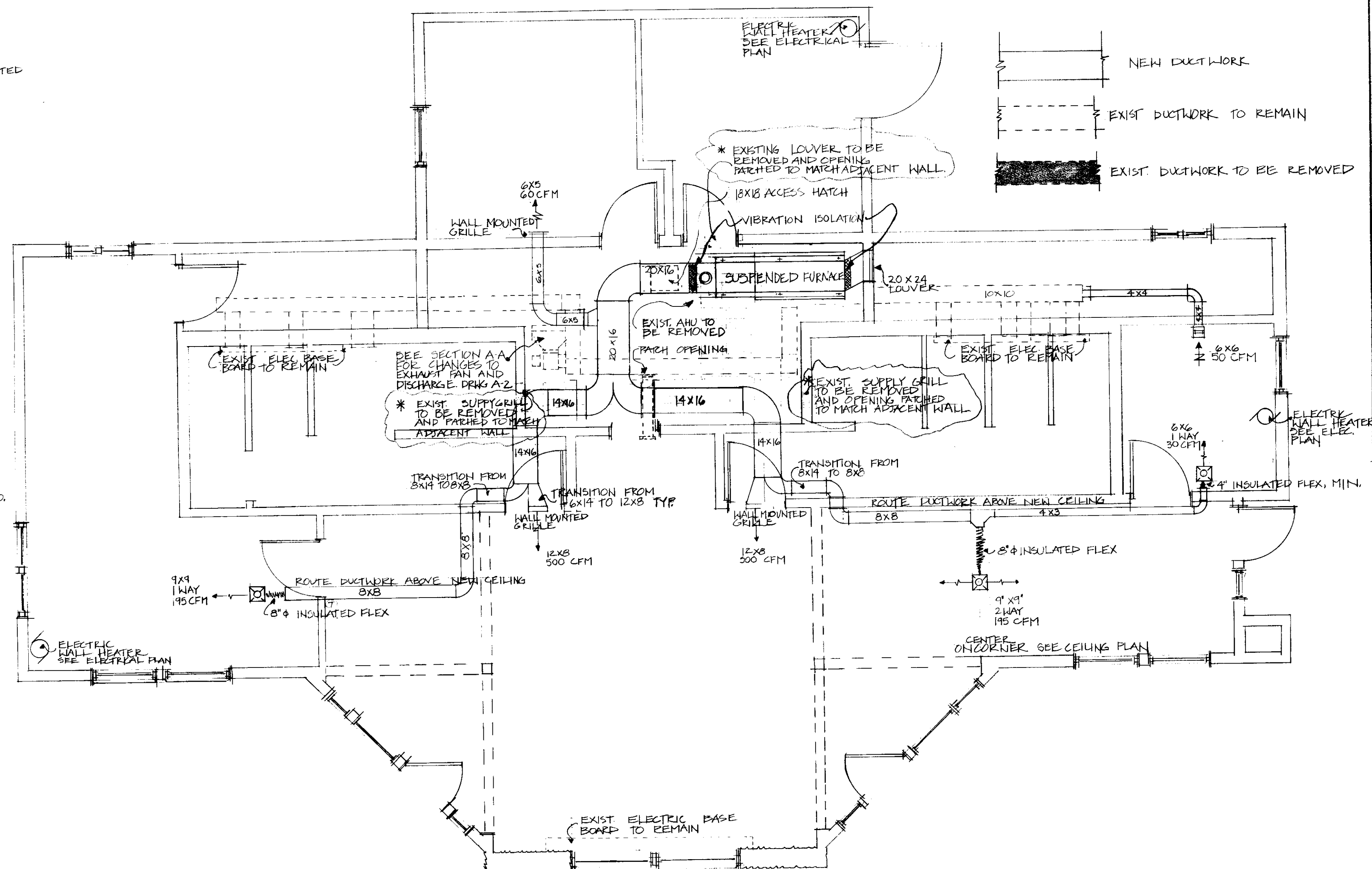


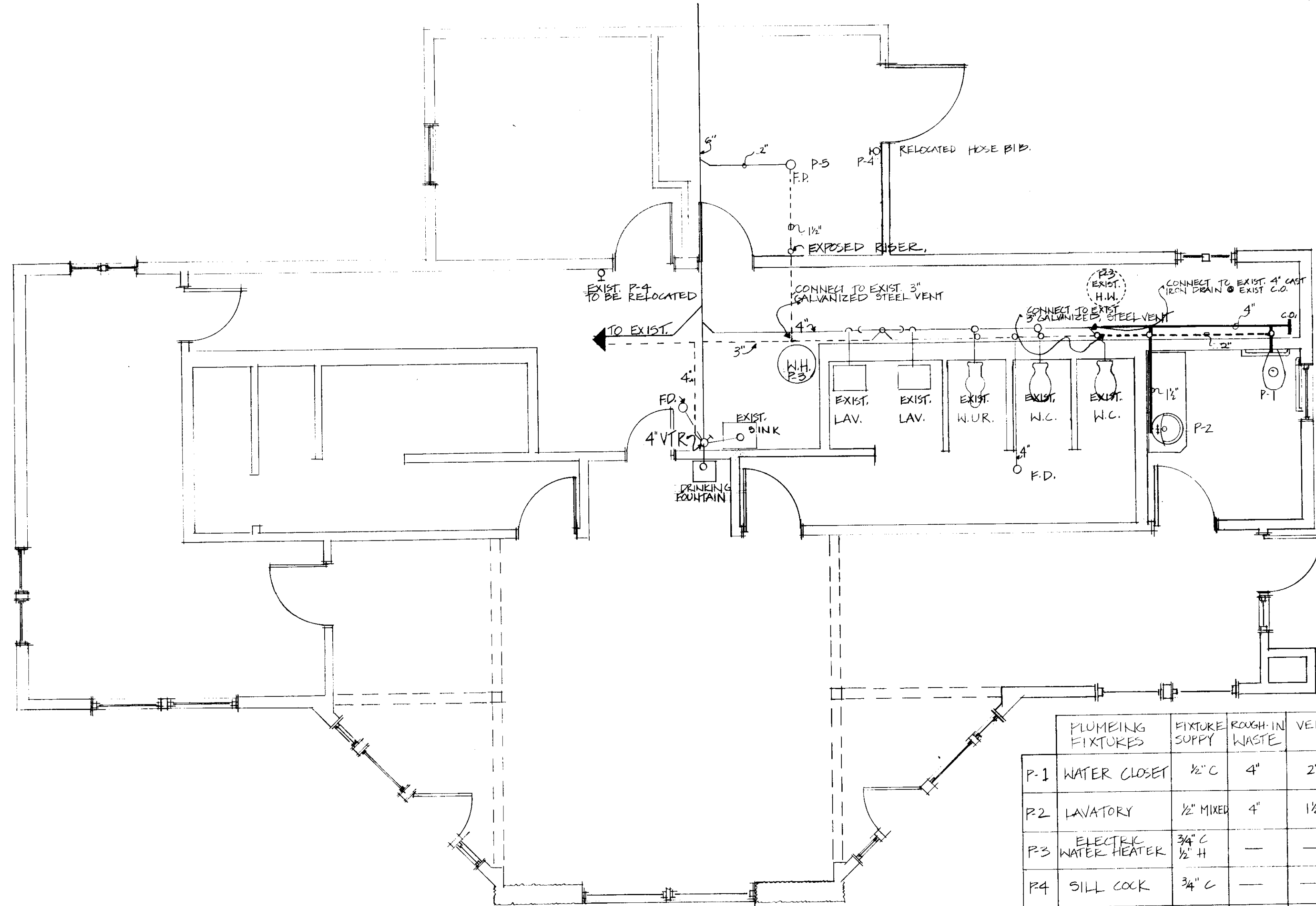
RISER DIAGRAM WATER SUPPLY  
NO SCALE



RISER DIAGRAM WASTE WATER  
NO SCALE



MECHANICAL PLAN  
SCALE: 1/4" = 1'-0"



PLUMBING PLAN  
SCALE: 1/4" = 1'-0"

PLUMBING FIXTURES	FIXTURE SUPPLY	ROUGH-IN WASTE	VENT	REMARKS
P-1 WATER CLOSET	1/2" C	4"	2"	INSTALL W/1/2" & 1" AFF
P-2 LAVATORY	1/2" MIXER	4"	1 1/2"	TEE SUPPLY INTO BOTH FAUCET INLETS
P-3 ELECTRIC WATER HEATER	3/4" C 1/2" H	-	-	TO BE RELOCATED
P-4 SILL COCK	3/4" C	-	-	TO BE RELOCATED
P-5 FLOOR DRAIN	-	2"	1 1/2"	

ROUGH-IN SCHEDULE

NOTES:

\* G.C. NOTE

- Toilet shall be American Standard "Instanto Toilet" model #2512.010, wall mounted with top spud. Sloan "Royal 110" flush valve or approved equal. Install with rim at 17" A.F.F.
- Lavatory shall be American Standard "Rondalyn Countertop lavatory" model #0491.019 with 4" center faucet holes. Faucet shall be American Standard "Ceramik" with pop-up drain, in chrome model #2080.101 or approved equal. Provide angle stops. Tee supply into both faucet inlets.
- Floor drain shall have a slotted round cover. Drain shall discharge through a P-trap. Outlet of P-trap shall have a two inch drain and integral floor cleanout.
- Piping:
  - New supply piping shall be type-L hard drawn tubing with 95-5 solder. Exposed piping in new restroom shall be copper or chrome-plated brass.
  - New waste piping shall be service weight cast-iron or DWV copper. Exposed piping in new restroom shall be copper or chrome-plated brass.
  - New vent piping shall be service weight cast-iron galvanized steel or DWV copper.
- Plumbing shall be installed according to Local Codes, State Codes and the National Plumbing Code.
- Furnace shall be a horizontal suspended unit with a burner/heat exchanger section, fan section, filter section. Unit shall be propane fired, and vented by means of a VENT stack through the roof. Unit shall have a capacity of 115,500 Btu/h output @ 1500 CFM @ .25" TSP. Unit shall be set up for two stage heating as controlled by thermostat in the space. Blower shall be controlled by a time clock. Provide unit with vibration isolation. VENT SHALL COMPLY WITH NFPA 211. UNIT SHALL BE A MODINE MODEL DHP 150 OR APPROVED EQUAL.  
Sequence of operation:  
Occupied: Blower on, outside air dampers at 500 CFM. Bathroom exhaust fan on. Burner controlled by thermostat in space.  
Unoccupied: Blower off, outside air dampers closed, bathroom fan off. Upon a call for heat by thermostat, blower and burner shall start, outside air dampers stay closed, bathroom exhaust stays off.
- Thermostat shall be a two stage heating thermostat compatible with furnace. UNIT SHALL BE EQUIPPED WITH AN INTERMEDIATE TEMPERATURE, DUCT MOUNTED FIRE-STOP.
- Gas piping shall be type-L soft temper copper tubing with flare fittings.
- Grills:
  - Supply grills shall be single deflection, horizontal blade, with opposed blade damper. Sized as shown. Grills shall be "Air Guide" model H-OB or approved equal.
  - Return grill shall be 1"x1" aluminum grid 90% free area grills, size as shown. Grills shall be "Air Guide" model RA-AG or approved equal.
- Diffusers shall be, flush mounted, anodized aluminum, square diffusers with opposed blade dampers and square to round adapters. Size and pattern as shown. Diffusers shall be "Air Guide" model AVP-FM-OB-SR or approved equal.
- Louvers shall be 18 gauge galvanized steel with fixed blades and 1" square mesh galvanized bird screen.
- DOOR LOUVERS & UC'S BY OTHERS. SEE DRAWING A-4
- EXPOSED PIPING IN PAINTED AREA SHALL BE EITHER CHROME PLATED, BRASS OR SHALL BE PAINTED TO MATCH WALLS.

DEPARTMENT OF STATE BUILDINGS

PLUMBING & MECHANICAL PLAN  
HIGHGATE WELCOMER CENTER  
ADDITION & RENOVATION  
HIGHGATE SPRINGS, VERMONT

16 DEC. 1988 AS SHOWN  
K. HENDERSON / S. SOMMERS  
P.M.-4  
5 8