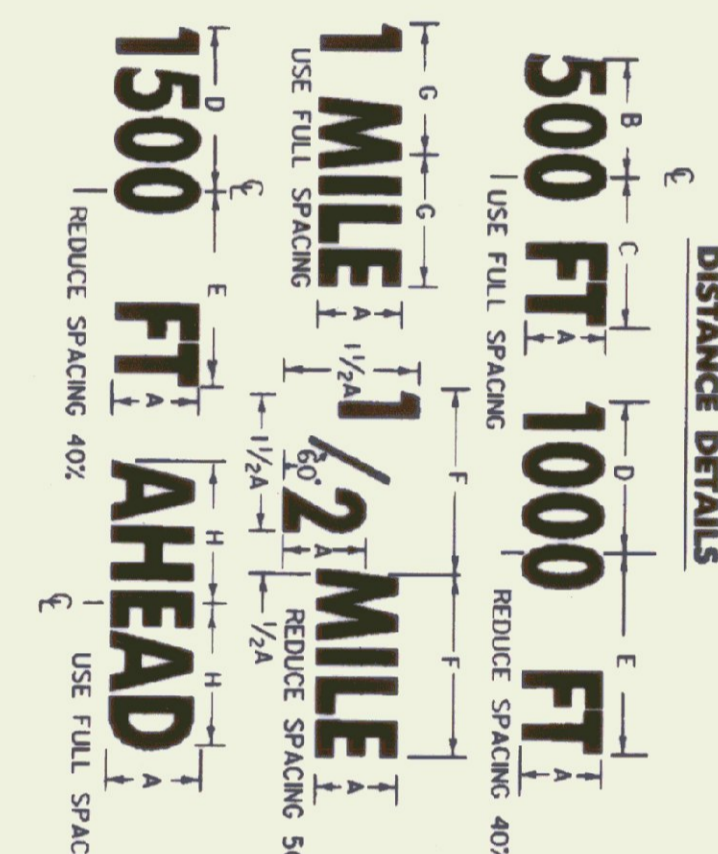
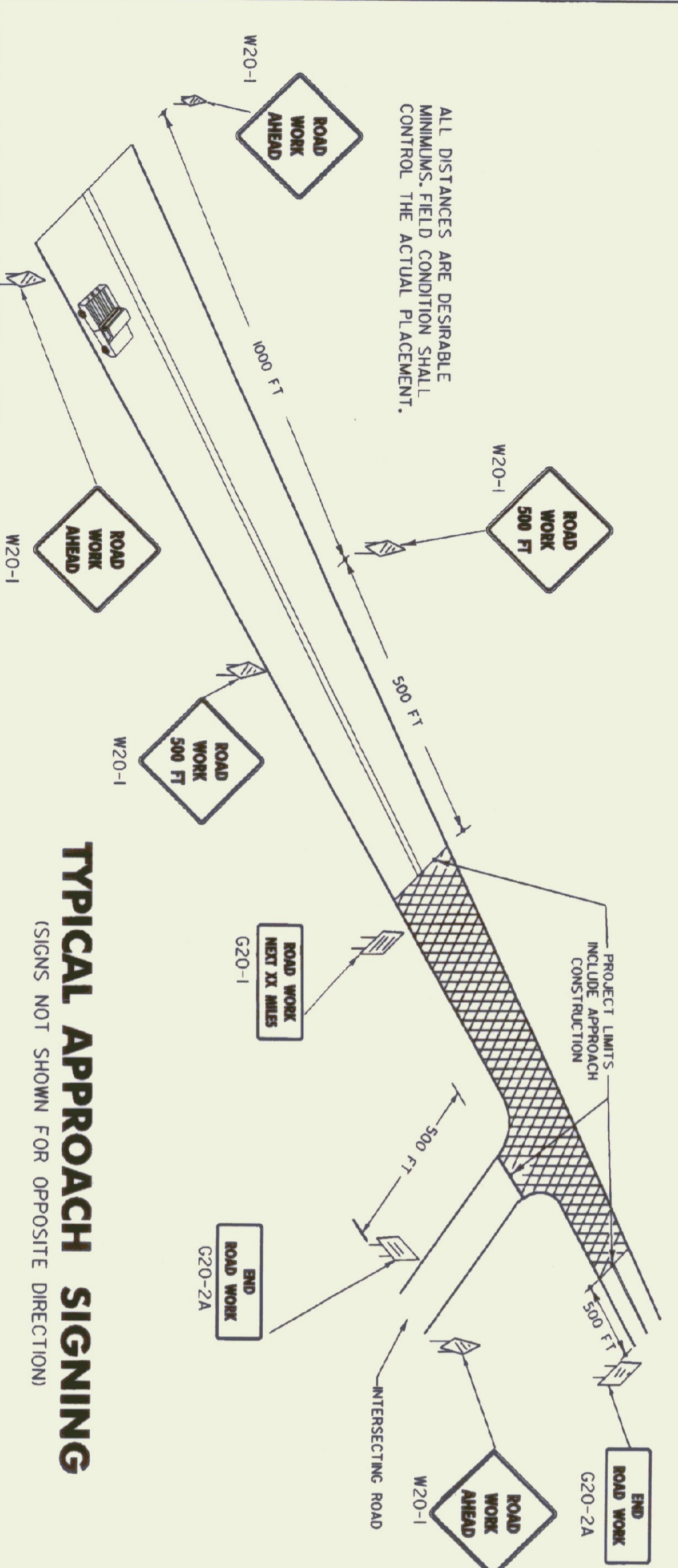
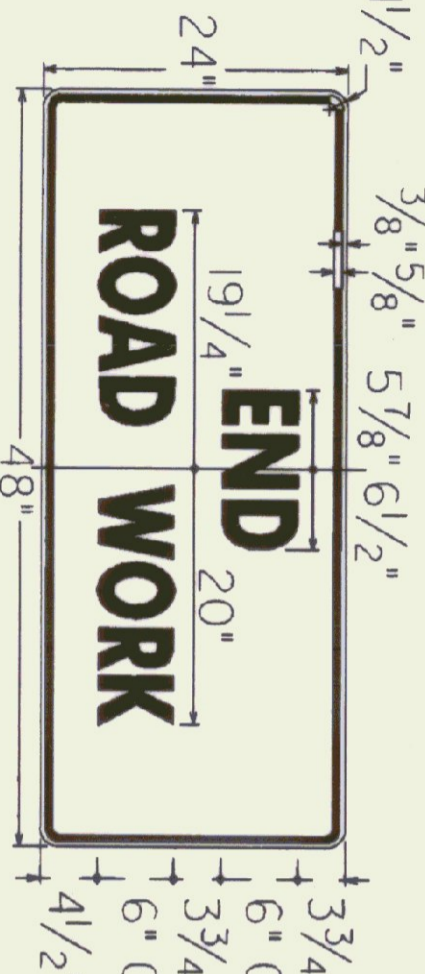


SIGN	DIMENSIONS (INCHES)										
	A	B	C	D	E	F	G	H	J	K	
MIN.	30	1/2	3/4	40	2 3/8	2 3/8	6 3/4	7	7 1/2	1 1/2	1 1/2
STD.	36	3/4	7/8	50	3 1/2	3 1/2	8 3/4	8 3/4	9	2 1/4	2 1/4
SPECIAL	48	1 1/4	1 1/4	70	4 3/4	4 3/4	11 1/4	12 1/4	12 1/4	3	3



A	DIMENSIONS (INCHES)										
	B	C	D	E	F	G	H				
40	8 1/2	8 3/4	8 1/2	9	9	7 3/4	8 3/4				
50	10 3/4	10 3/4	10 3/4	11 1/4	11 1/4	9 1/2	10 3/4				
70	14 1/4	15 1/4	14 3/8	15 3/4	15 3/4	13 1/2	15 1/2				



REVISIONS AND CORRECTIONS

MAY 26, 1989 - DATE OF ORIGINAL ISSUE  
OCT 21, 1992 - REVISED WOOD POST REQUIREMENTS, ADDED SIGN DETAILS, & REVISED TITLE BLOCK  
AUG 08, 1995 - MINOR NOTE REVISIONS  
JAN 06, 1997 - MINOR NOTE AND DIMENSION REVISIONS

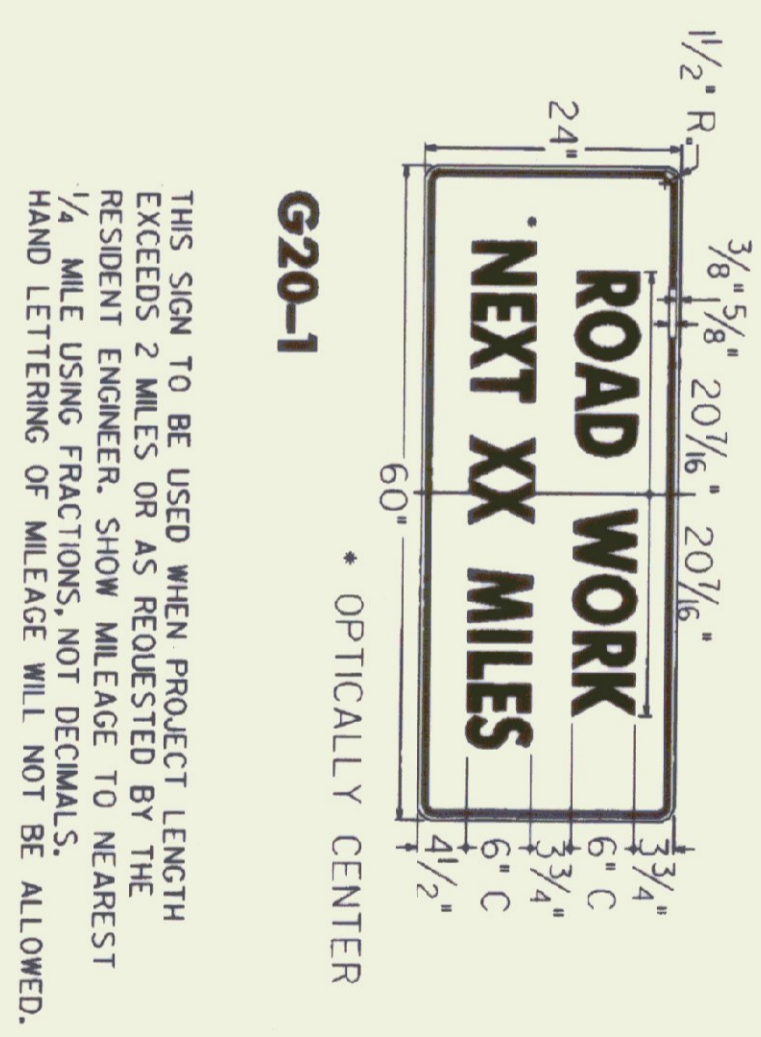
APPROVED

*[Signature]*  
DIRECTOR OF ENGINEERING

*[Signature]*  
DIRECTOR OF CONSTRUCTION AND MAINTENANCE

# CONSTRUCTION APPROACH SIGNS

/tr01/std/std000.dgn : std000.01



THIS SIGN TO BE USED WHEN PROJECT LENGTH EXCEEDS 2 MILES OR AS REQUESTED BY THE RESIDENT ENGINEER. SHOW MILEAGE TO NEAREST 1/4 MILE USING FRACTIONS, NOT DECIMALS. HAND LETTERING OF MILEAGE WILL NOT BE ALLOWED.

### NOTES

THE SIGNS SHOWN ON THIS SHEET ARE INTENDED FOR USE IN PROVIDING ADVANCE WARNING AND INFORMATION ON PROJECTS OVER WHICH TRAFFIC WILL BE MAINTAINED. WHEN ADDITIONAL ADVANCE SIGNING OR CONTROL ARE NECESSARY, THE PLANS AND/OR THE SPECIFIC PROJECT CONTRACT DOCUMENTS WILL GIVE THE DETAILS OF THE SIGNS AND/OR OTHER TRAFFIC CONTROL DEVICES TO BE USED. REFER TO APPROPRIATE STANDARD SHEETS.

**APPLICATION OF STANDARDS**

SINCE IT IS NOT POSSIBLE TO PRESCRIBE DETAILED STANDARDS OF APPLICATION FOR ALL OF THE SITUATIONS THAT MAY OCCUR, THE STANDARDS OF APPLICATION REFERRED TO IN THIS MANUAL ON UNIFORM TRAFFIC CONTROL DEVICES, FOR THE PRINCIPLES, PROCEDURES, AND STANDARDS THAT WILL BE REQUIRED IN CONNECTION WITH ADVANCED WARNING AND ON-PROJECT CONSTRUCTION SIGNS AND MORE COMMONLY USED.

**LOCATION**

THE SIGNS SHALL BE LOCATED AS DETAILED ON THIS SHEET OR AS OTHERWISE SHOWN ON THE PLANS. THEY SHALL APPEAR AT EACH END OF THE HIGHWAY UNDER CONSTRUCTION AND ON ALL INTERSECTING PUBLIC HIGHWAYS. THE EXACT PLACEMENT TO BE FOLLOWED, AND THE APPROXIMATE SPACING TO BE OBSERVED. THE ENGINEER SHALL DETERMINE THE EXACT LOCATIONS.

**DESIGN**

LETTERS, DIGITS, ARROWS, SPACING AND TEXT DIMENSIONS SHALL CONFORM WITH THE STANDARD ALPHABET FOR HIGHWAY SIGNS AND PAVEMENT MARKINGS AND THE STANDARD HIGHWAY SIGNS AS SPECIFIED IN THE MANUAL ON UNIFORM TRAFFIC DEVICES ADOPTED BY THE U.S. DEPARTMENT OF TRANSPORTATION, FEDERAL HIGHWAY ADMIN.

**MATERIALS**

THE SIGN BASE MATERIAL USED FOR THE SIGNS ON THIS SHEET MAY BE ANY OF THE FOLLOWING, WITH THE MINIMUM THICKNESS AS NOTED.

FLAT SHEET ALUMINUM	0.125 INCHES
HIGH DENSITY OVERLAYED PLYWOOD	5/8 INCHES
GALVANIZED SHEET STEEL	1/2 GAGE

**RE-REFLECTORIZATION**

ALL REFLECTORIZED MATERIAL SHALL CONSIST OF TYPE 11B OR TYPE 111 SHEETING.

**COLORS**

THE COLORS SHALL CONFORM WITH THE STANDARD COLORS ADOPTED BY THE AMERICAN SOCIETY OF TRANSPORTATION ENGINEERS AND APPROVED BY THE U.S. DEPARTMENT OF TRANSPORTATION. THE BOTTOM OF A SIGN SHALL BE AT LEAST 7 FEET ABOVE THE GROUND. THE INSTALLATION OF SIGNS SHALL BE AT LEAST 7 FEET ABOVE THE SIDEWALK, IN URBAN AREAS. THE BOTTOM OF THE SIGN SHALL BE AT LEAST 7 FEET ABOVE THE SIDEWALK.

**INSTALLATION**

THE SIGNS SHALL BE ERECTED BEFORE THE START OF ANY WORK AND SHALL BE COVERED WITH A PROTECTIVE MATERIAL DURING PERIODS OF INACTIVITY, OR UPON COMPLETION OF THE WORK. SIGNS SHALL BE ERECTED IN A NEARLY VERTICAL POSITION. THE DISTANCE BETWEEN SIGNS SHALL BE AS SPECIFIED ON THE PLANS. THE BOTTOM OF A SIGN SHALL BE AT LEAST 7 FEET ABOVE THE GROUND. THE NEAREST EDGE OF A SIGN SHALL BE AT LEAST 6 FEET FROM THE EDGE OF PAVEMENT, AND THE NEAREST EDGE OF A SIGN SHALL BE AT LEAST 6 FEET FROM THE EDGE OF PAVEMENT. THE NEAREST EDGE OF A SIGN SHALL BE AT LEAST 6 FEET FROM THE EDGE OF PAVEMENT. THE NEAREST EDGE OF A SIGN SHALL BE AT LEAST 6 FEET FROM THE EDGE OF PAVEMENT.

### NOTES CONT.

**MAINTENANCE**

SIGNS SHALL BE MAINTAINED IN A CLEAN AND LEGIBLE CONDITION SATISFACTORY TO THE ENGINEER. THEY SHALL BE COMPLETELY VISIBLE TO APPROACHING TRAFFIC AT ALL TIMES. SIGNS SHALL BE KEPT PLUMB AND LEVEL, AND ALWAYS PRESENT A NEAT APPEARANCE. DAMAGED OR DIRTY SIGNS SHALL BE REPAIRED, CLEANED OR REPAIRED AS ORDERED BY THE ENGINEER.

**GENERAL**

THE COST OF FURNISHING, INSTALLING, MAINTAINING AND REMOVING ALL CONSTRUCTION APPROACH SIGNS WILL BE CONSIDERED SEPARATELY FROM THE COST OF CONSTRUCTION AS A WHOLE AND SHALL BE INCLUDED IN THE CONTRACT UNIT PRICE BID FOR VARIOUS ITEMS INVOLVED IN THE CONTRACT. DURING ALL PHASES OF CONSTRUCTION THE SIGNS SHALL BE KEPT WHEN THE PROJECT MANUAL OR UNIFORM TRAFFIC CONTROL DEVICES SHALL BE COVERED IN A WORKMANLIKE MANNER.

**SIGN COVERS**

SIGN COVERS SHALL CONSIST OF A PANEL PAINTED FLAT BLACK, THE SAME SIZE AS THE SIGN IT COVERS. THE PANEL SHALL BE OF WOOD, PLYWOOD, HARDBOARD OR ANY MATERIAL WHICH WILL BE APPROVED THAT WILL NOT DETERIORATE BY EXPOSURE TO THE WEATHER. THE SIGN FACE MATERIAL SHALL BE COVERED WITH A MATERIAL WHICH WILL NOT BE DAMAGED BY THE SIGN FACE MATERIAL. CONTRACTORS SHALL COORDINATE THEIR SIGNING ACTIVITIES WITH OTHER CONTRACTORS WITHIN THE PROJECT LIMITS, AS DIRECTED BY THE REGIONAL CONSTRUCTION ENGINEER.

### SIGN POSTS

WHERE CONSTRUCTION SIGN INSTALLATIONS ARE NOT PROTECTED BY GUARD RAIL OR OTHER APPROVED TRAFFIC BARRIERS, THE SIGNS ON WHICH THE SIGNS ARE MOUNTED SHALL BE YIELDING METAL POSTS AS DESIGNATED IN THE E SERIES OF STANDARD DRAWINGS OR YIELDING WOODEN POSTS IN ACCORDANCE WITH THE FOLLOWING REQUIREMENTS:

WOODEN POSTS ARE ACCEPTABLE FOR USE WITH CONSTRUCTION SIGNS. THESE POSTS SHALL HAVE A UNIFORM CROSS-SECTION AND SHALL BE MADE FROM GRADE 2 AIR-DRIED SOUTHERN YELLOW PINE OR ANOTHER EQUIVALENT SOFTWOOD. AN ACCEPTABLE EQUIVALENT SHALL BE APPROVED BY THE ENGINEER. THE DESIGN VALUE AND POST SPECIFICATION SHALL BE AS FOLLOWS:

DESIGN VALUES FOR WOOD CONSTRUCTION AND RELATED SUPPLEMENT.

AS ESTABLISHED BY THE NATIONAL FOREST PRODUCTS ASSOCIATION IN THEIR NATIONAL DESIGN THE FOLLOWING ARE CONSIDERED TO BE ACCEPTABLE WOODEN POSTS:

- 4" x 4" (ACTUAL DIMENSIONS ARE 3.5" x 3.5")
  - ACCEPTABLE FOR SINGLE OR DUAL POSTS INSTALLATION WITH NO MODIFICATIONS.
- 4" x 6" (ACTUAL DIMENSIONS ARE 3.5" x 5.5")
  - ACCEPTABLE FOR SINGLE POST INSTALLATIONS ONLY WHEN MODIFIED BY DRILLING TWO 1 1/2" DIAMETER HOLES, ONE AT 4" AND THE OTHER AT 18" ABOVE THE GROUND LINE AND PERPENDICULAR TO THE ROADWAY CENTERLINE.
- 6" x 6" (ACTUAL DIMENSIONS ARE 5.5" x 5.5")
  - ACCEPTABLE FOR SINGLE POST INSTALLATIONS ONLY WHEN MODIFIED BY DRILLING TWO 2" DIAMETER HOLES, ONE AT 4" AND THE OTHER AT 18" ABOVE THE GROUND LINE AND PERPENDICULAR TO THE ROADWAY CENTERLINE.
- 6" x 8" (ACTUAL DIMENSIONS ARE 5.5" x 7.5")
  - ACCEPTABLE FOR SINGLE POST INSTALLATIONS ONLY WHEN MODIFIED BY DRILLING TWO 3" DIAMETER HOLES, ONE AT 4" AND THE OTHER AT 18" ABOVE THE GROUND LINE AND PERPENDICULAR TO THE ROADWAY CENTERLINE.

**ADDITIONAL DESIGN CRITERIA:**

THE LONGER DIMENSION OF THE POST(S), SUCH AS THE 6" DIMENSION OF THE 4" x 6" POST, SHALL BE PLACED PARALLEL TO THE ROADWAY CENTERLINE.

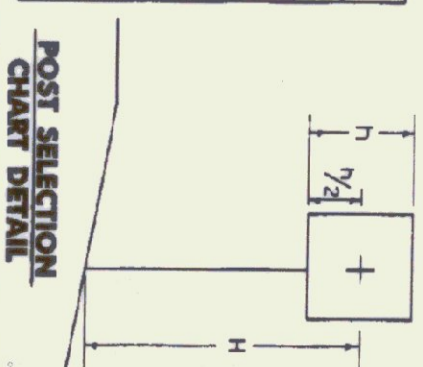
ALL WOODEN POSTS SHALL HAVE AN EMBEDMENT DEPTH OF 4 FEET.

NO CROSS-BRACING OR BACK-BRACING TO KEEP THE POSTS PLUMB WILL BE ALLOWED. CONCRETE FOUNDATIONS, COLLARS, OR SOIL BEARING PLATES ARE NOT PERMITTED. CONSTRUCTION SIGNS SHALL BE PLACED ON TWO OR MORE POSTS WHEN ANY OF THE FOLLOWING CONDITIONS OCCUR:

- THE SIGN WIDTH (HORIZONTAL DIMENSIONS FOR DIAMOND SHAPED SIGNS) EXCEEDS 3 1/2 FEET.
- THE EXPOSED SIGN AREA OF ANY SINGLE SIGN OR ASSEMBLY EXCEEDS 1/2 SQ. FEET.
- THE SV OF A SINGLE POST IS EXCEEDED. (SEE THE POST SELECTION CHART BELOW).

**WOOD POST SELECTION CHART**

SIGN AREA (FT <sup>2</sup> ) X HEIGHT (FT) < SV (SELECTION VALUE)	SV
4' x 4'	64
4' x 6'	147
6' x 6'	216
6' x 8'	389



OTHER STDS. REQUIRED:

VERMONT AGENCY OF TRANSPORTATION

# STANDARD E-100