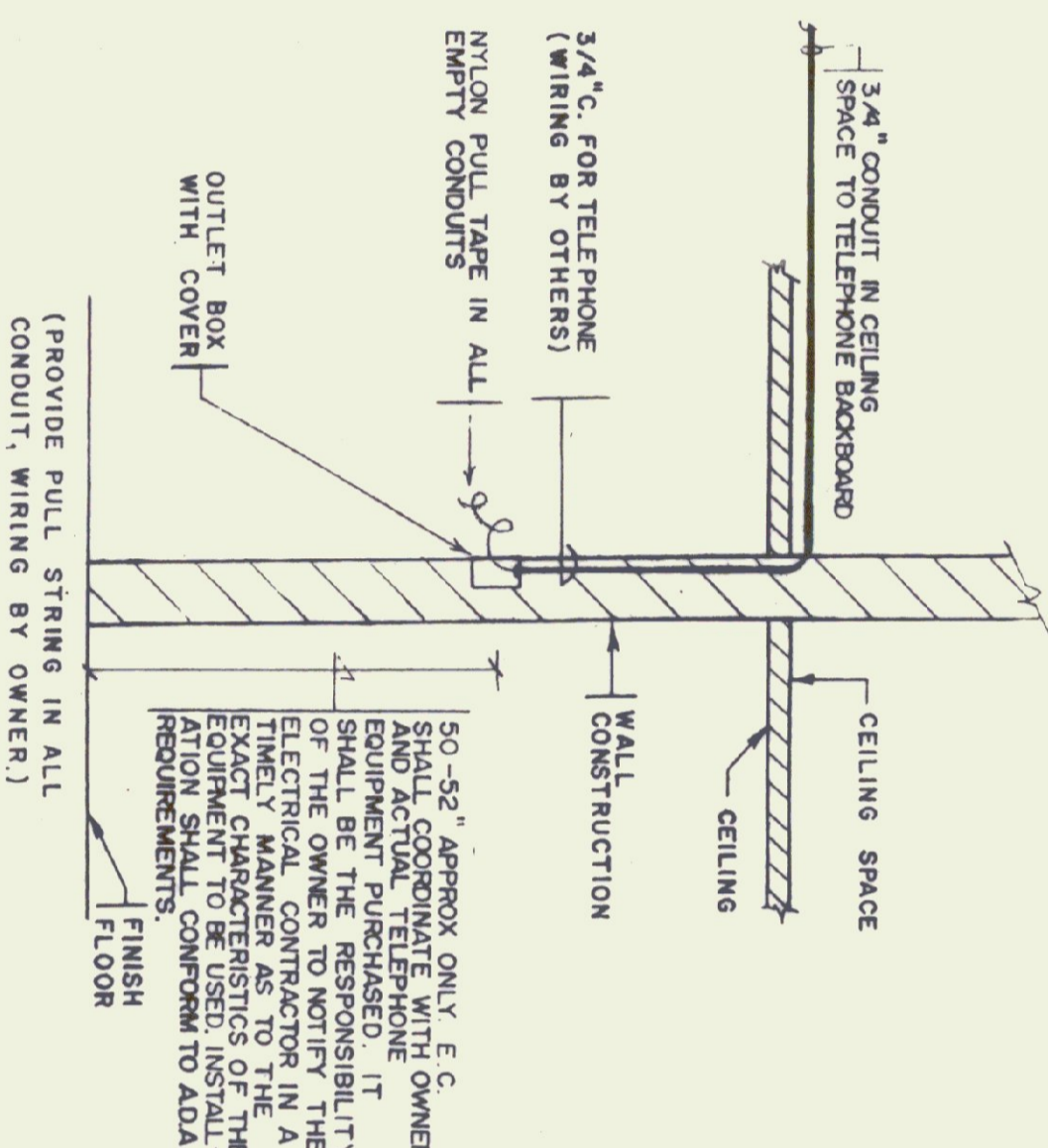
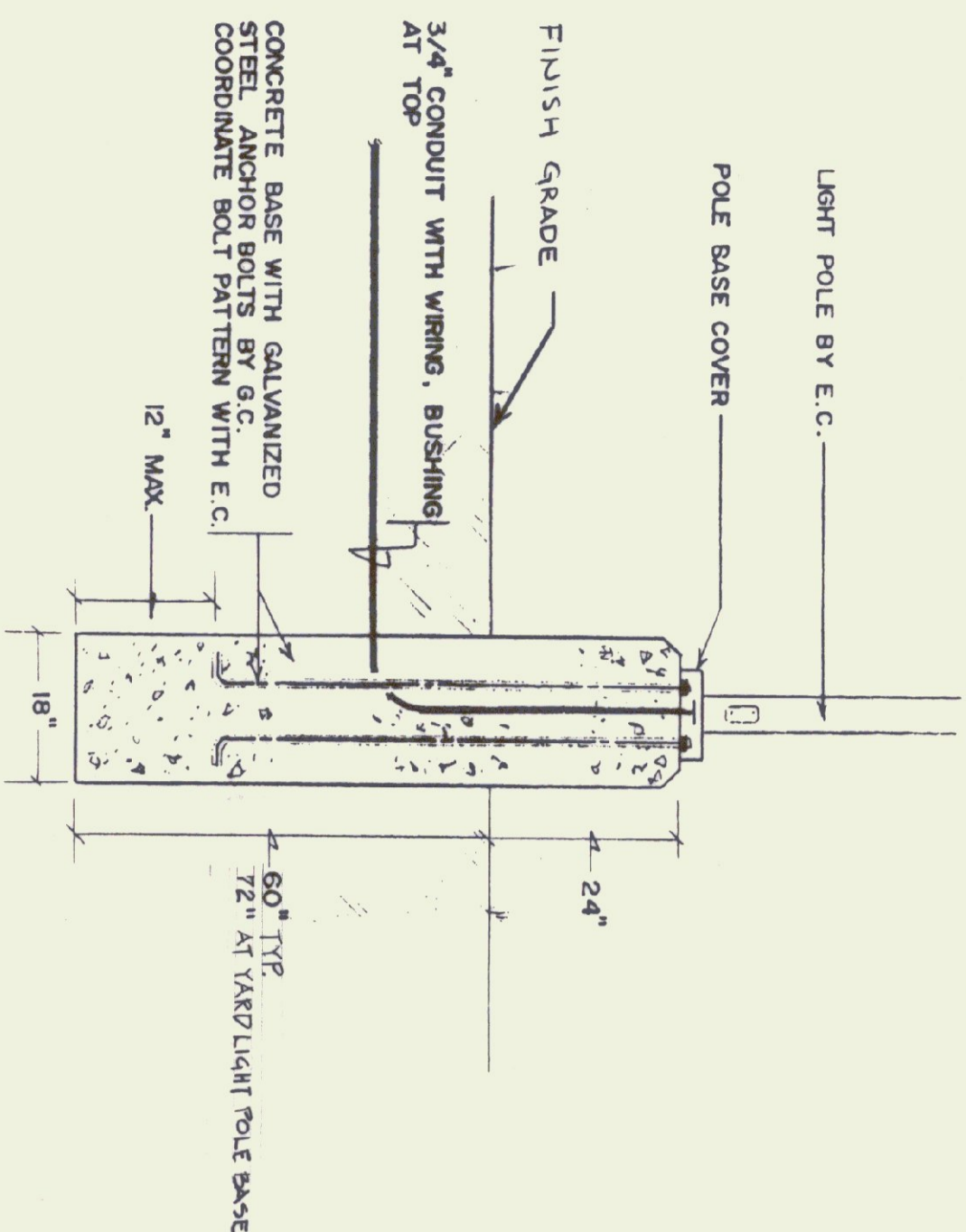


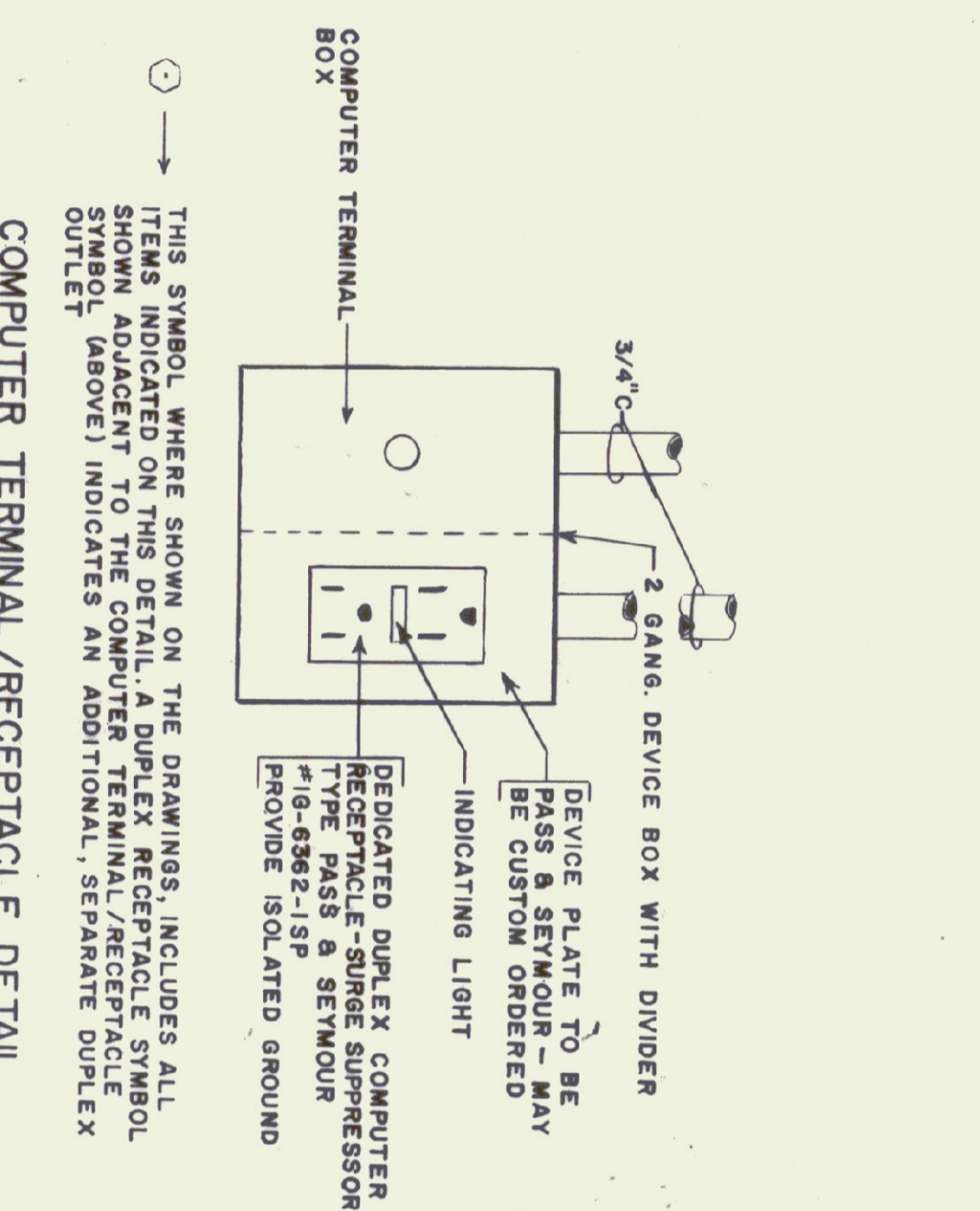
COMPUTER TERMINAL OUTLET DETAIL
NOT TO SCALE



TELEPHONE OUTLET DETAIL
NOT TO SCALE



LIGHT POLE BASE DETAIL
NOT TO SCALE



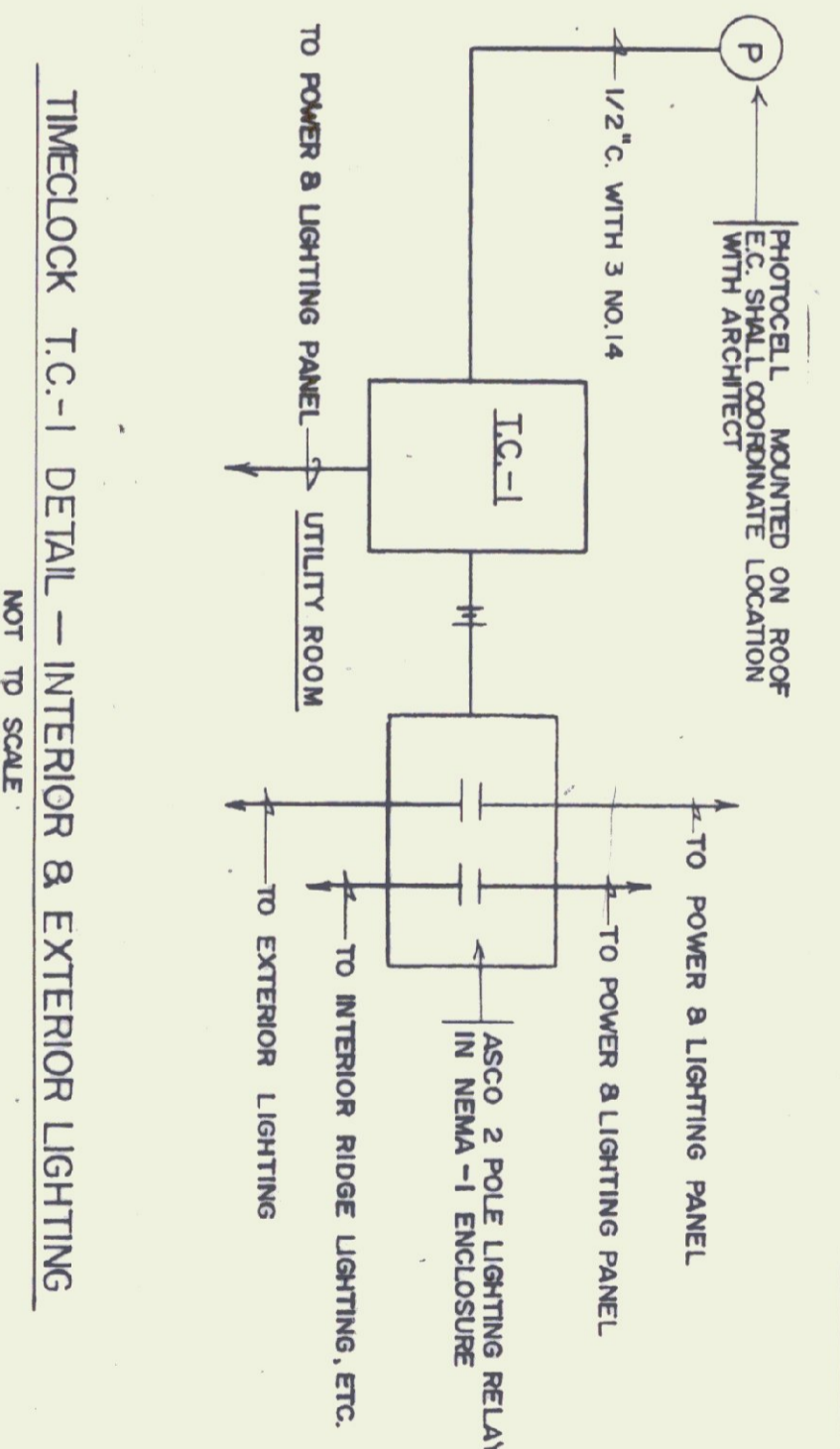
COMPUTER TERMINAL/RECEPTACLE DETAIL
NOT TO SCALE

TYPE	MANUFACTURER	LAMPS	MOUNTING	FINISH	REMARKS
A	LOBBY NEWSTAR VANDAL PROOF NO. 54-142	2-32 T-8 RS	SURFACE	WHITE	PROVIDE TAMPER-PROOF SCREWS
B	HANDICAPPED TOILET RM. NEWSTAR VANDAL PROOF OWNER NO. 54-142/45	2-32 T-8 RS	SURFACE/ CORNER MT.	WHITE	PROVIDE TAMPER-PROOF SCREWS
C	PORTICO/CANOPY FALLSAFE NO. 120-93-9-55P HDR-100M-120-93-9-55P CI-ADD SUFFIX QRS	1-100 MHD	RECESSED	COORDINATE WITH ARCH.	PROVIDE TAMPER FIXTURE TO BE QUARTZ RESTINE
D	POLE MOUNTED LIGHT LITTONIA H-TEK NO. KSI-250M-R4-20-SP12 QRS; POL-E-SS-12-2-DIM	1-250 MH	POLE-16'	COORDINATE WITH ARCH.	PROVIDE RESTINE
E	EXIT SIGN FALLSAFE NO. EXF-1-RV-120-E-BP	2-9 9W BLAX	SURFACE COORDINATE WITH ARCH.	WHITE WITH RED LETTERS	INTERNAL BATTERY BACK TAMPER-PROOF SCREWS
F	CLOSET LIGHT FALLSAFE FBO-14-120	2-7 7W BLAX	WALL 6'-STAFF	OPAL WHITE	
G	SIGNAGE LIGHTING DAYBRITE 4" STRIP T148H-LT20	60W ROOM TEMP	SEE ARCH. DETAILS	WHITE	PROVIDE LOW VOLTAGE TAMPERS AND BALLASTS
H	TRACK LIGHTING PROGRESS NO. P254-10	75W PAR L	CEILING SUSPENDED	WHITE	PROVIDE TRACKS BY 5 HEADS.
I	PASS & SEYMOUR LAMP HOLDER NO. 14B11	60W I	WALL T-6 AFF		TRIM IN PLUGS CHASE WALL IN LIGHT SWITCH INSTALLED AFF
J	POLE MOUNTED LIGHT G.E. STREET LIGHT TYPE M	250 MER.	POLE 25' FIELD VERIFY TO EXIST.	SAME AS EXISTING	

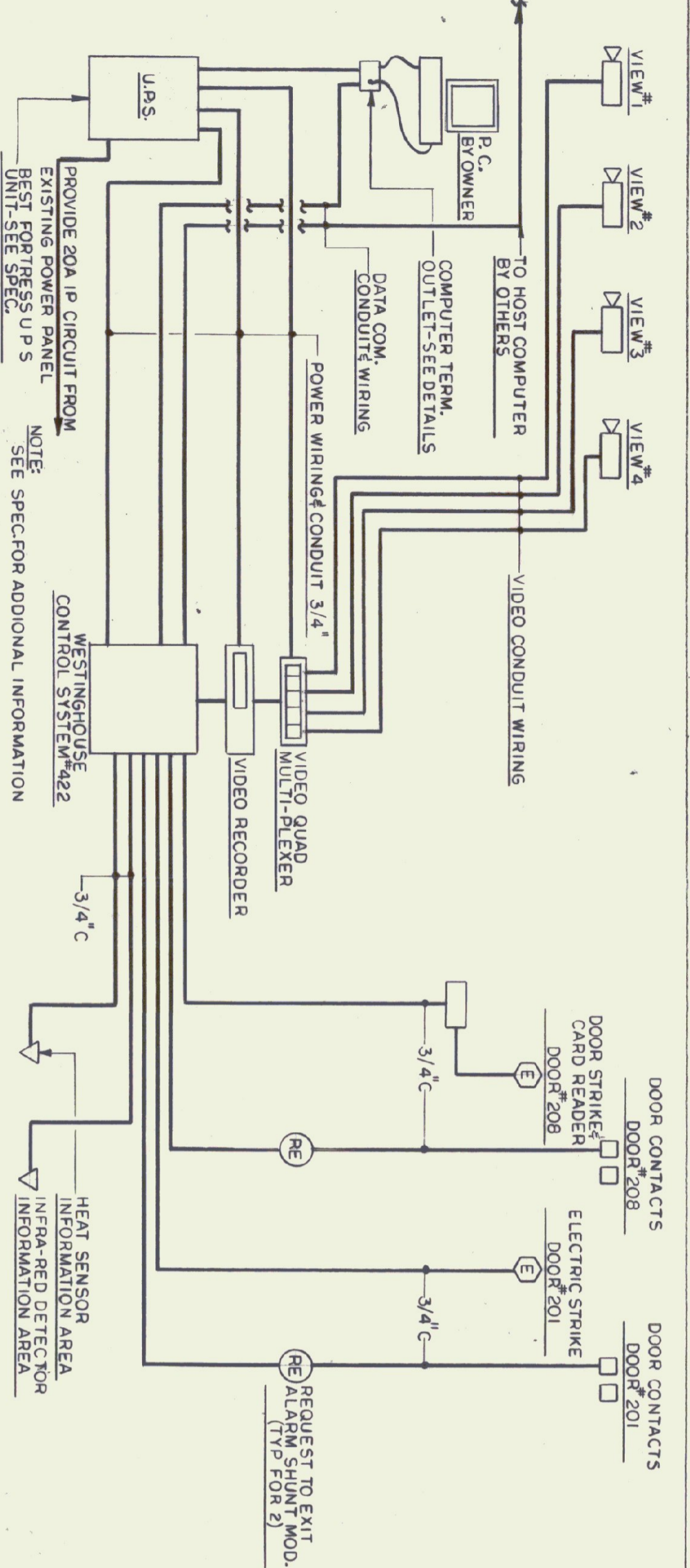
LIGHTING FIXTURE SCHEDULE

SYMBOL	DESCRIPTION
⊕	JUNCTION BOX
⊖	SINGLE RECEPTACLE 1Ø 1/2 A.F.F.
⊕⊖	DUPLEX RECEPTACLE 1Ø 1/2 A.F.F.
⊕⊖⊕	QUAD RECEPTACLE 1Ø 1/2 A.F.F.
⊕⊖⊕⊕	SPECIAL RECEPTACLE RATING ADJACENT
⊕⊖⊕⊕⊕	POWER PANEL
⊕⊖⊕⊕⊕⊕	FIRE STATION
⊕⊖⊕⊕⊕⊕⊕	TELEPHONE OUTLET
⊕⊖⊕⊕⊕⊕⊕⊕	MOTOR STARTER
⊕⊖⊕⊕⊕⊕⊕⊕⊕	DISCONNECT
⊕⊖⊕⊕⊕⊕⊕⊕⊕⊕	FIRE HORN & LIGHT
⊕⊖⊕⊕⊕⊕⊕⊕⊕⊕⊕	TRANSFORMER
⊕⊖⊕⊕⊕⊕⊕⊕⊕⊕⊕⊕	HOME RUN TO PANEL P (MIN. 3/4" CONDUIT)
⊕⊖⊕⊕⊕⊕⊕⊕⊕⊕⊕⊕⊕	CONDUIT TURNING UP
⊕⊖⊕⊕⊕⊕⊕⊕⊕⊕⊕⊕⊕⊕	CONDUIT TURNER UP
⊕⊖⊕⊕⊕⊕⊕⊕⊕⊕⊕⊕⊕⊕⊕	EXIT LIGHT
⊕⊖⊕⊕⊕⊕⊕⊕⊕⊕⊕⊕⊕⊕⊕⊕	FLOURESCENT LIGHT
⊕⊖⊕⊕⊕⊕⊕⊕⊕⊕⊕⊕⊕⊕⊕⊕⊕	POINT OF ELEC. CONNECTION TO [E]
⊕⊖⊕⊕⊕⊕⊕⊕⊕⊕⊕⊕⊕⊕⊕⊕⊕⊕	NEW
⊕⊖⊕⊕⊕⊕⊕⊕⊕⊕⊕⊕⊕⊕⊕⊕⊕⊕⊕	EXISTING
⊕⊖⊕⊕⊕⊕⊕⊕⊕⊕⊕⊕⊕⊕⊕⊕⊕⊕⊕⊕	SINGLE POLE SWITCH 4Ø A.F.F.
⊕⊖⊕⊕⊕⊕⊕⊕⊕⊕⊕⊕⊕⊕⊕⊕⊕⊕⊕⊕⊕	THREE-WAY SWITCH 4Ø A.F.F.
⊕⊖⊕⊕⊕⊕⊕⊕⊕⊕⊕⊕⊕⊕⊕⊕⊕⊕⊕⊕⊕⊕	ABOVE FINISHED FLOOR
⊕⊖⊕⊕⊕⊕⊕⊕⊕⊕⊕⊕⊕⊕⊕⊕⊕⊕⊕⊕⊕⊕⊕	ABOVE FINISHED COUNTER
⊕⊖⊕⊕⊕⊕⊕⊕⊕⊕⊕⊕⊕⊕⊕⊕⊕⊕⊕⊕⊕⊕⊕⊕	INCANDESCENT CEILING LIGHT
⊕⊖⊕⊕⊕⊕⊕⊕⊕⊕⊕⊕⊕⊕⊕⊕⊕⊕⊕⊕⊕⊕⊕⊕⊕	NIGHT LIGHT
⊕⊖⊕⊕⊕⊕⊕⊕⊕⊕⊕⊕⊕⊕⊕⊕⊕⊕⊕⊕⊕⊕⊕⊕⊕⊕	DUPLEX RECEPTACLE IN FLOOR
⊕⊖⊕⊕⊕⊕⊕⊕⊕⊕⊕⊕⊕⊕⊕⊕⊕⊕⊕⊕⊕⊕⊕⊕⊕⊕⊕	CLOCK OUTLET 7-0" AFF
⊕⊖⊕⊕⊕⊕⊕⊕⊕⊕⊕⊕⊕⊕⊕⊕⊕⊕⊕⊕⊕⊕⊕⊕⊕⊕⊕⊕	MOTOR THERMAL SWITCH
⊕⊖⊕⊕⊕⊕⊕⊕⊕⊕⊕⊕⊕⊕⊕⊕⊕⊕⊕⊕⊕⊕⊕⊕⊕⊕⊕⊕⊕	ARRHANDLING UNIT
⊕⊖⊕⊕⊕⊕⊕⊕⊕⊕⊕⊕⊕⊕⊕⊕⊕⊕⊕⊕⊕⊕⊕⊕⊕⊕⊕⊕⊕⊕	GFI TYPE DUPLEX RECEPTACLE
⊕⊖⊕⊕⊕⊕⊕⊕⊕⊕⊕⊕⊕⊕⊕⊕⊕⊕⊕⊕⊕⊕⊕⊕⊕⊕⊕⊕⊕⊕⊕	PAY TELEPHONE OUTLET
⊕⊖⊕⊕⊕⊕⊕⊕⊕⊕⊕⊕⊕⊕⊕⊕⊕⊕⊕⊕⊕⊕⊕⊕⊕⊕⊕⊕⊕⊕⊕⊕	PAY TELEPHONE OUTLET/HANDICAP ACCESSIBLE
⊕⊖⊕⊕⊕⊕⊕⊕⊕⊕⊕⊕⊕⊕⊕⊕⊕⊕⊕⊕⊕⊕⊕⊕⊕⊕⊕⊕⊕⊕⊕⊕⊕	EMERGENCY LIGHT FIXTURE
⊕⊖⊕⊕⊕⊕⊕⊕⊕⊕⊕⊕⊕⊕⊕⊕⊕⊕⊕⊕⊕⊕⊕⊕⊕⊕⊕⊕⊕⊕⊕⊕⊕⊕	REMOTE EMERGENCY LIGHT HEAD
⊕⊖⊕⊕⊕⊕⊕⊕⊕⊕⊕⊕⊕⊕⊕⊕⊕⊕⊕⊕⊕⊕⊕⊕⊕⊕⊕⊕⊕⊕⊕⊕⊕⊕⊕	ELECTRIC DOOR STRIKE LOCATION
⊕⊖⊕⊕⊕⊕⊕⊕⊕⊕⊕⊕⊕⊕⊕⊕⊕⊕⊕⊕⊕⊕⊕⊕⊕⊕⊕⊕⊕⊕⊕⊕⊕⊕⊕⊕⊕	CCTV CAMERA LOCATION
⊕⊖⊕⊕⊕⊕⊕⊕⊕⊕⊕⊕⊕⊕⊕⊕⊕⊕⊕⊕⊕⊕⊕⊕⊕⊕⊕⊕⊕⊕⊕⊕⊕⊕⊕⊕⊕⊕⊕	COMPUTER TERMINAL OUTLET DETAIL

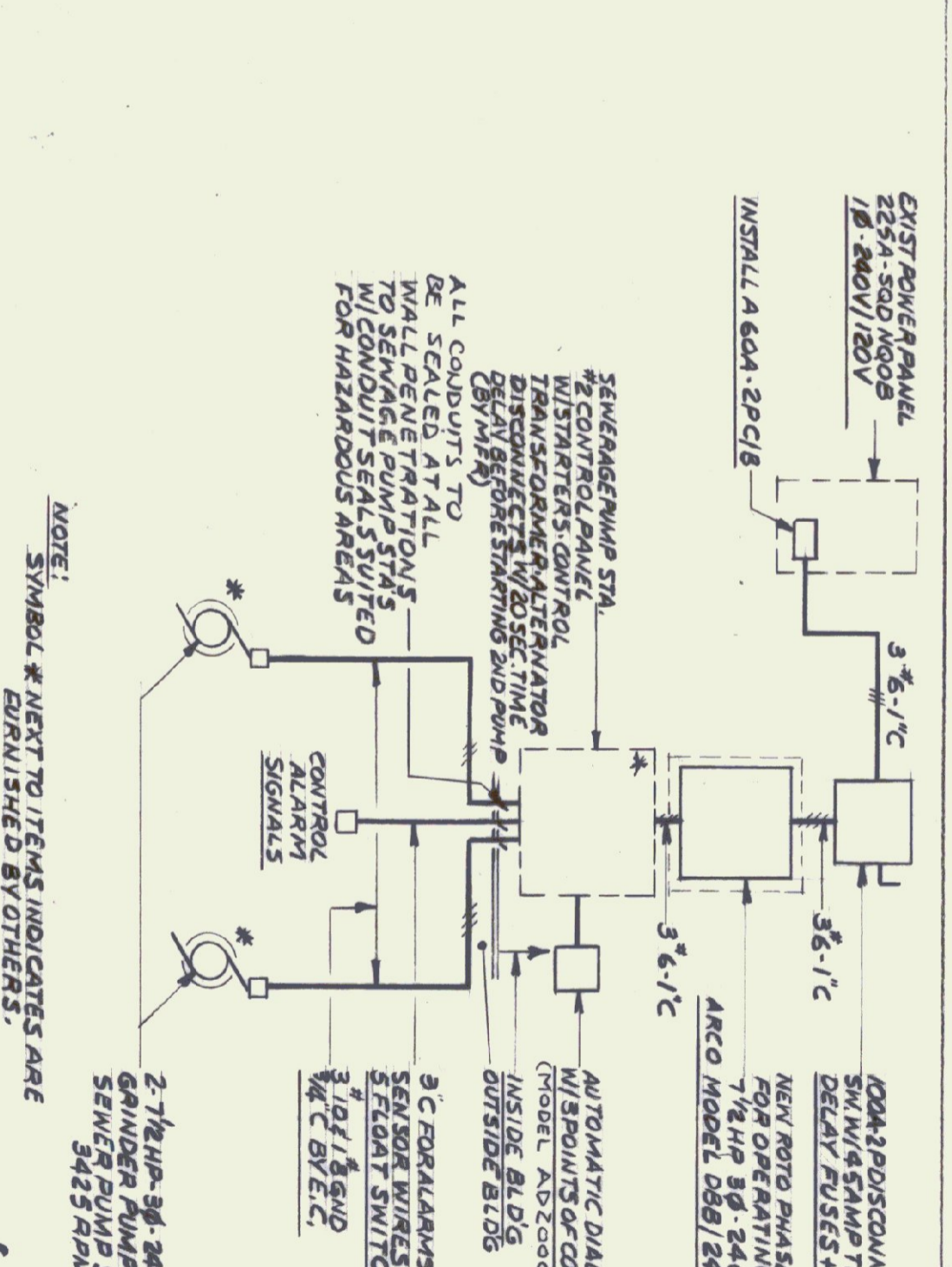
ELECTRICAL LEGEND



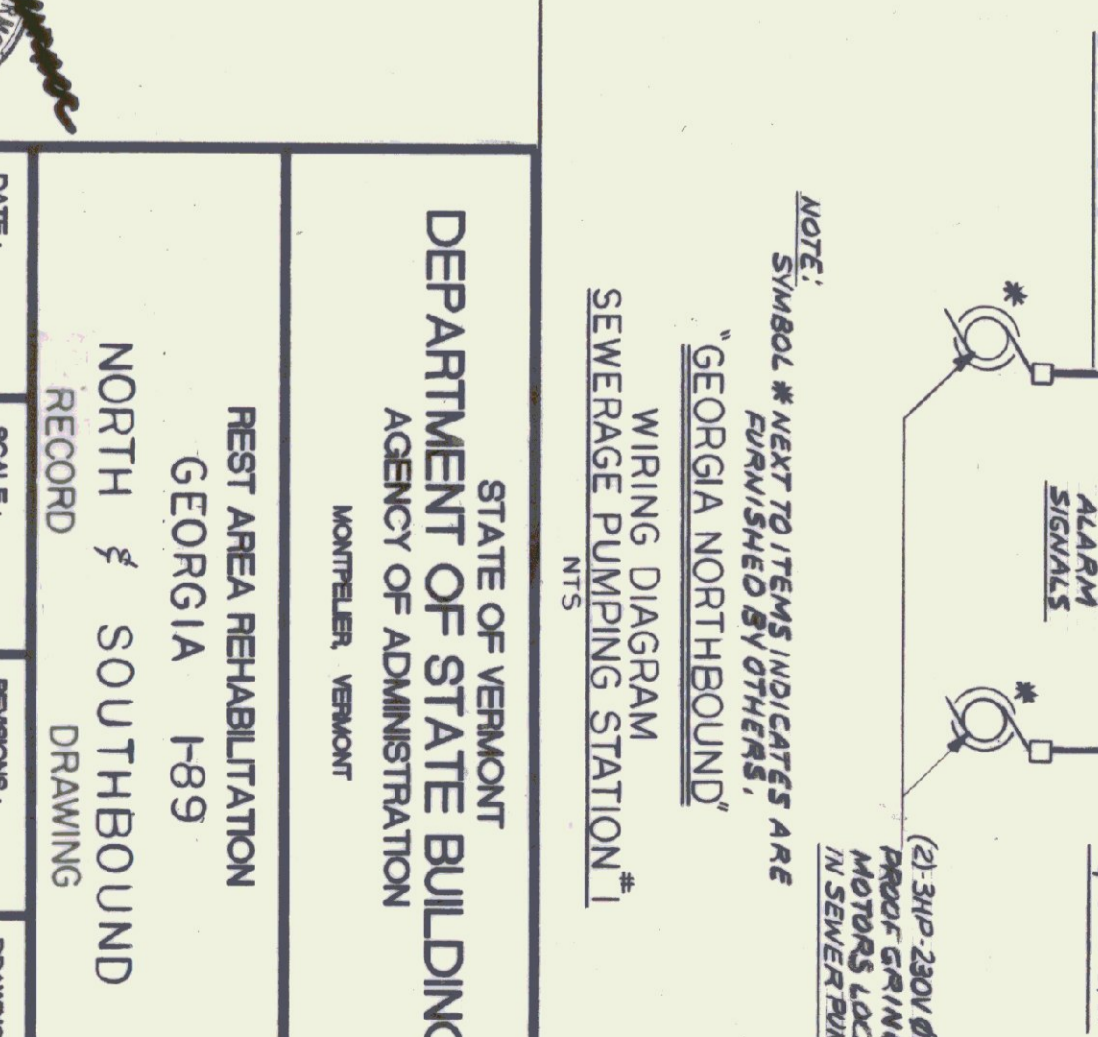
TIMECLOCK T.C.-1 DETAIL - INTERIOR & EXTERIOR LIGHTING
NOT TO SCALE



PROXIMITY ACCESS CONTROL SYSTEM-ONE LINE DIAGRAM
NTS



WIRING DIAGRAM SEWERAGE PUMPING STATION #2
NTS



WIRING DIAGRAM SEWERAGE PUMPING STATION #1
NTS

STATE OF VERMONT
DEPARTMENT OF STATE BUILDINGS
AGENCY OF ADMINISTRATION
NORTH & SOUTHBOUND
RECORD DRAWING

REST AREA REHABILITATION
GEORGIA I-89

DATE: 8-21-98
SCALE: 1/4"=1'-0"
DRAWN BY: NPL 774 N/C
APPROVED BY: [Signature]
DRAWING NO.: E-3.0
SHEET: [Blank]
REVISIONS: [Blank]

