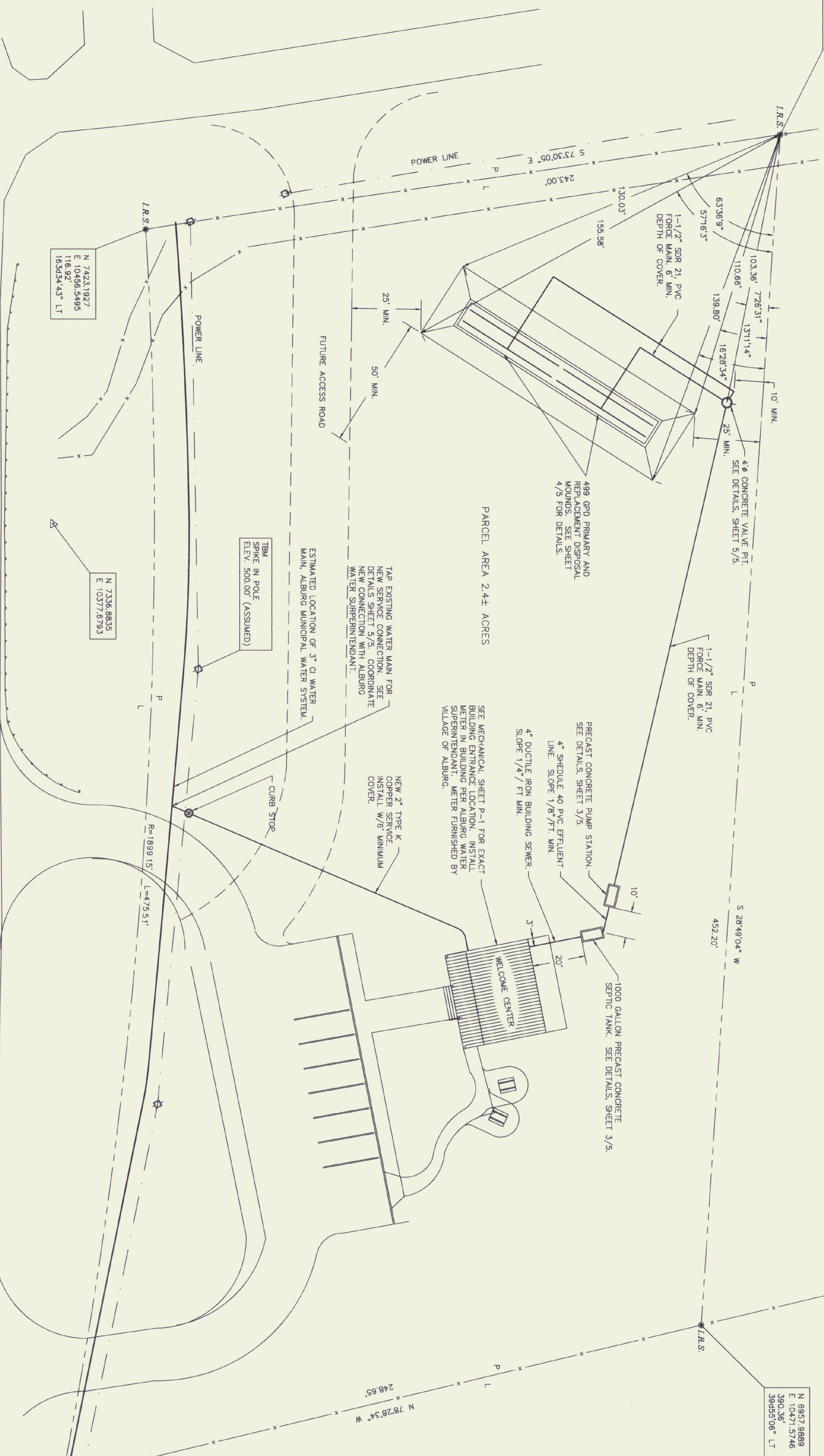


N 7354.1830
E 10689.5445
119410.30" LT



N 6957.9889
E 10471.5746
390.36"
39455.06" LT

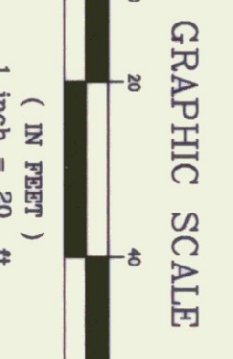
N 7007.6621
E 10227.9415
361.67"
1432.34" LT

N 6977.5725
E 10202.4313

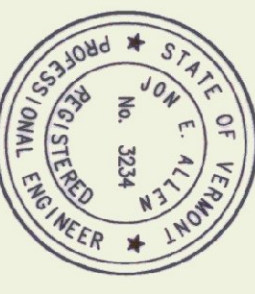
N 7423.1927
E 10456.5495
116.92"
163434.43" LT

N 7336.8835
E 10377.6793

- 9 4/26/96 CHANGED WATER SERVICELINE TO 2" JEA GAK
- 8 4/26/96 CHANGED BUILDING WATERLINE JEA GAK
- 7 4/26/96 CHANGED BUILDING WATERLINE JEA GAK
- 6 4/26/96 ADDED MOUND LAYOUT DIMENSIONS JEA GAK
- 5 4/26/96 MODIFIED FUTURE ACCESS ROAD JEA GAK
- 4 4/26/96 ADDED SHEET NO. TO TITLE BLOCK JEA GAK
- 3 6/23/95 ADDED PARCEL AREA JEA GAK
- 2 6/22/95 ADDED P/L COURSE AND DISTANCE JEA GAK
- 1 6/7/95 ADDED WATER CONNECTION JEA GAK



Jon E. Allen



REV.	NO.	DATE	DESCRIPTION	MADE BY	CHECKED BY	APPROVED BY
1		5/17/95				

OWNER	ALBURG WELCOME CENTER ALBURG, VERMONT SEWAGE DISPOSAL SYSTEM
DESIGNER	NH 028-1(17)S VERMONT SURVEY and ENGINEERING, INC. 59 EAST STATE STREET • MONTPELIER, VERMONT • 05602
DATE	5/17/95
DRAWING NO.	11295
SHEET NO.	2/5
SCALE	1" = 20.00'